



This report is produced by the OCHA Regional Office for the Pacific in collaboration with humanitarian partners. It was issued by the OCHA Regional Office for the Pacific. It covers the period from 11 to 25 January 2013. This will be the last Situation Report issued for Tropical Cyclone Evan.

## Highlights

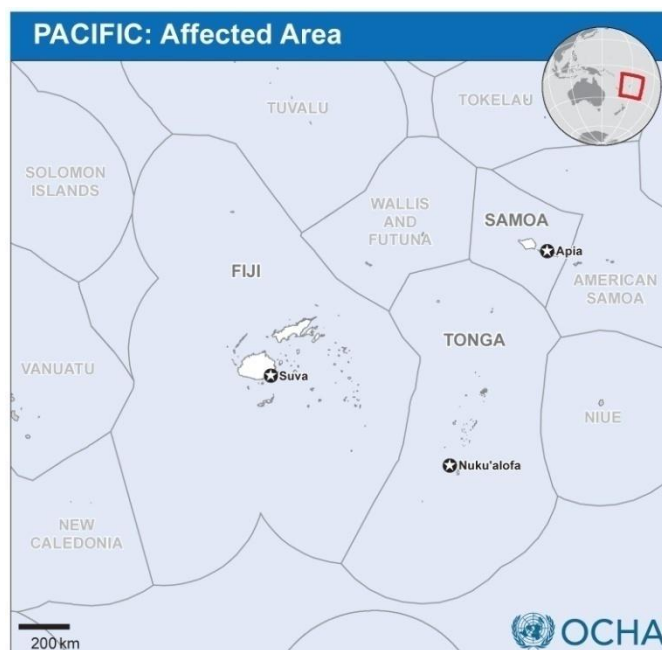
- Both Samoa and Fiji are transitioning from humanitarian response to early recovery and rehabilitation.
- 2,729 houses have been destroyed or severely damaged affecting approximately 17,000 people.
- Post Disaster Needs Assessment in Samoa expected to be completed by the end of January.
- 75 percent of the agriculture sector on Upulo Island in Samoa was moderately or severely affected.

**2,729**  
**houses**

completely  
destroyed or  
severely damaged

**17,000**  
**people**

with ongoing shelter  
needs



Source: OCHA Regional Office for the Pacific  
The boundaries and names shown and the designations used on this map do not imply official endorsement or acceptance by the United Nations.

## Situation Overview

### Samoa

The Early Recovery and Recovery Needs Assessment Sub-Committee in collaboration with the World Bank, Asian Development Bank, UNDP and other donors and technical agencies continue to work on a Post Disaster Needs Assessment (PDNA) including a Damage and Loss Assessment (DaLA). The PDNA will be completed by the end of January. A draft of the PDNA will be circulated to technical agencies by the end of this week.

An advisor from the IASC Gender Standby Capacity (GenCap) has been deployed to support the PDNA. She has been supporting the Government of Samoa, UN Country Team, and NGOs to develop gender-sensitive early recovery strategies and to further increase the capacity of humanitarian actors to effectively address gender issues in emergencies.

UNESCO has completed an assessment of the impact to the culture sector and in particular cultural heritage, something which has not been done for previous disasters. The overall damages sustained to the culture sector were assessed as moderate with several landmarks suffering severe damages.

### Fiji

The Government of Fiji and partners are implementing the Humanitarian Action Plan, launched on 9 January. The Government of Fiji is facilitating Cluster specific meetings to assist in a revision of the Humanitarian Action Plan due to be released on 8 February. The revised Humanitarian Action Plan will also further inform the development of the PDNA that is planned to begin on 10 February.

UNDP has recruited an Early Recovery Advisor who will assist in the second revision of the Humanitarian Action Plan, the PDNA and the development of a recovery and rehabilitation plan.

# Humanitarian Response



## Samoa (Population: 187,820)

### Shelter

- 2,385 families in 161 villages have received assistance from the Government of Samoa through the distribution of relief supplies.
- The Shelter Sub-Committee has presented its damage report to the National Disaster Council which will inform, together with the PDNA, the Recovery Plan.

### Health

- The Health sector is continuing its public health and disease surveillance, general environmental health, water, food safety and nutritional monitoring activities as well as providing support to primary health care services.
- There are anecdotal reports of an increase in cases of diarrheal disease, wounds and respiratory infections in Samoa but there is no surveillance data to support this.

### Food Security

- The worst hit areas in terms of agriculture are the South-West, Central and Southern parts of the central highlands on Upulo Island.
- Severe damage occurred in Lefaga, Salamumu, Safata, Siumu and Falealili Districts, including Aleisa and the Cross Island Road.
- Approximately 45 percent of the agricultural area on Upolu Island is severely impacted and 30 percent is moderately impacted.
- The cost of replanting lost fruit trees is estimated to be US\$173,000.
- Damage to buildings, machinery and equipment used for agricultural production is estimated to be US\$1.79 million.
- Approximately 50 percent of farmers surveyed report that stored agricultural inputs such as fertilizers, seeds and agricultural chemicals have been lost at a cost of US\$89,000.
- Damage due to the death of livestock is estimated at US\$300,000.
- Damage to livestock infrastructure such as fencing, housing, stockyards and water tanks is estimated at US\$2.76 million.
- The estimated cost of recovery for the agriculture and fisheries sectors is US\$6.5 million.

**US\$6.5 million**

estimated as the cost of recovery for agriculture and fisheries sectors

### WASH

- Restoration of chlorination systems in rural areas continues, with on-going notices on radio to inform the public to boil water before consumption.
- The overall water carting for both drinking and general use has decreased significantly as 90 percent of water supply systems are operational.

**90 percent**

of water supply systems operational

### Logistics

- The Electric Power Corporation is continuing with repairs to the low voltage network along inland roads. Areas that were completely destroyed include Matautu, Lefaga and Lefaga-tai.
- Six 1,250 kVA generators hired from New Zealand have been installed at the new sub-station at Fulusou. EPC hopes that this sub-station will be operational soon.



## Fiji (Population: 837,271)

### Shelter

- Two Evacuation Centers remain open catering for 12 evacuees.
- Following on from the Housing Policy and Humanitarian Action Plan, the Government of Fiji is undertaking assessments of dwellings recognized by the Government of Fiji as having legal owner occupiers, legal tenants or recognized settlements. Initial information from the Western Division indicates that 614 dwellings have been partially damaged and 699 completely destroyed. NGOs collaborating under the Shelter Cluster are assessing damages in informal settlements. Preliminary results indicate that as many

**819 houses**

completely destroyed in Western Division

as 120 houses in informal settlements in the Western Division have been completely destroyed and 57 partially damaged.

- The Ministry of Labour will run a pilot Cash-For-Work Programme targeting 100 households at a cost of US\$30,000. Volunteers will help to rebuild houses as well as other rehabilitation tasks such as cleaning and planting crops.
- The Government of Fiji has identified a need for 6,000 tarpaulins, and 1,000 shelter tool kits. 2,000 tarpaulins will be used immediately, and 4,000 will be used to replenish prepositioned stocks in each Division. 400 shelter tool kits will be used immediately with a further 600 to replenish prepositioned stocks in each Division.

#### WASH

- Water carting continues to Yasawa, Mamanuca and Vatulele Islands as well as isolated areas of the Western Division.

#### Health:

- A Typhoid outbreak in the Koroboya (Ba Subdivision) has been contained.
- Repairs to the roof of the Lautoka hospital are 70 percent complete.

#### Education

- In the Western Division, 196 of the 206 damaged schools are ready to receive students with six needing further repairs.
- Temporary shelters have been erected to cater for 200 students for the next month as ongoing repairs are made.
- 30 tents are on standby should repairs on schools not be completed by the beginning of the school year.
- Save the Children Fiji made and distributed a total of 1,576 primary and secondary school packs and 1,200 exercise books.
- AusAID will support the rehabilitation of schools in the Yasawas and will initiate a social protection program, including the distribution of Student Back Pack Kits and the delivery of school meals.

**10 schools**  
need further repairs  
before students return

#### Food Security

- The Government of Fiji has distributed Kumala, Cabbage, Eggplant and French Bean seeds to 51 affected communities in the Yasawas.
- The Government of Fiji will now focus on the distribution of rehabilitation seeds to areas in the Western Division of Viti Levu.
- Veterinary drugs have been received and distributed in the Western Division.
- UNDP has developed a concept note on livelihoods recovery has been developed, including a 'Cash-for-Work' program targeting 1,000 people in the agriculture sector.

#### Protection

- Intensive mental health and psychosocial support is being carried out in affected communities through Empower Pacific.

#### Logistics

- The Fiji Electric Authority has restored electricity to 94 percent of the Western Division.

**94 percent**  
of electricity restored  
in the Western Division

#### For further information, please contact:

**Peter Muller**, Regional Disaster Response Advisor, [muller2@unocha.org](mailto:muller2@unocha.org) Tel: +679 310 6760. Cell +679 999 1664  
**Jo McIntosh**, Public Information Officer, [mcintoshj@unocha.org](mailto:mcintoshj@unocha.org) Tel: +679 331 7326. Cell +679 868 8731

Meeting Schedule: <https://www.phtpacific.org/iCal>

Maps: <https://www.phtpacific.org/disaster-emergency/tc-evan-12-td-04f>

Web photos of aerial survey:

<https://picasaweb.google.com/lh/albumMap?uname=101811121152510378563&aid=5823538249971300449&authkey=Gv1sRgCMPSmoixrbvomQE#map>

Twitter: [www.twitter.com/UNOCHAROP](http://www.twitter.com/UNOCHAROP)

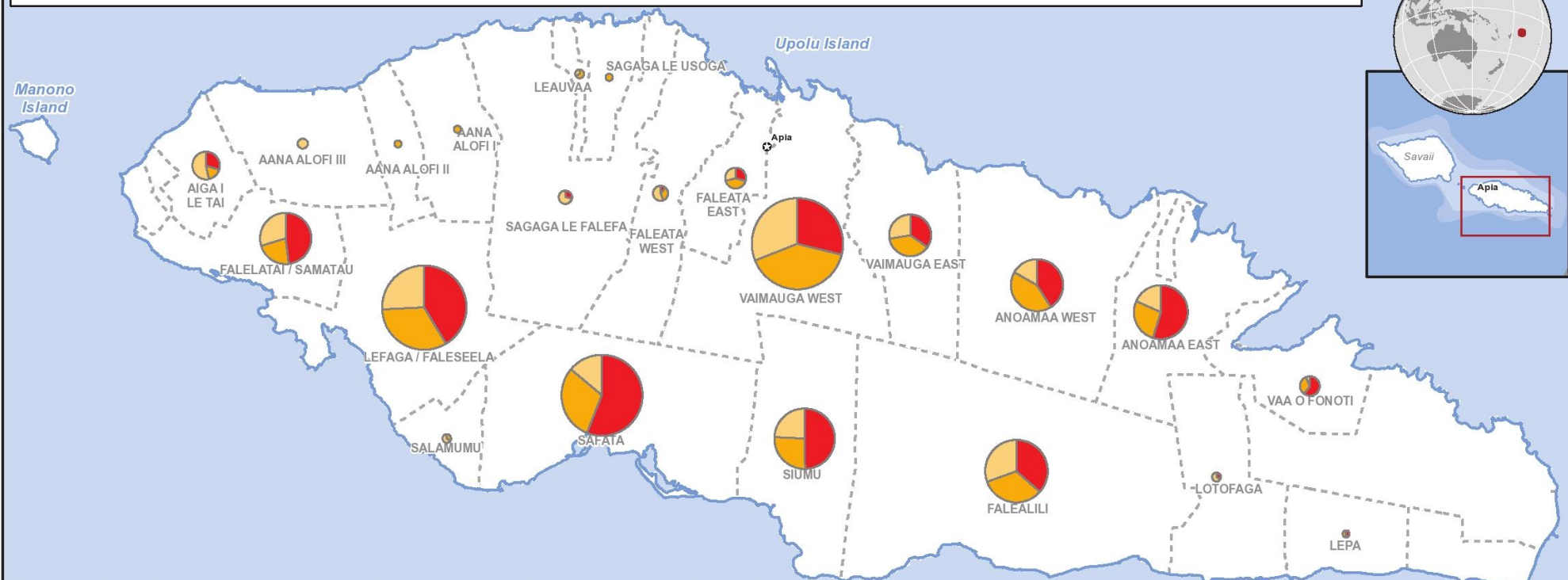
Facebook: [www.facebook.com/UNOCHA\\_ROP](http://www.facebook.com/UNOCHA_ROP)

For more information, please visit [www.phtpacific.org](http://www.phtpacific.org), [www.unocha.org/roap](http://www.unocha.org/roap), [www.reliefweb.int](http://www.reliefweb.int)

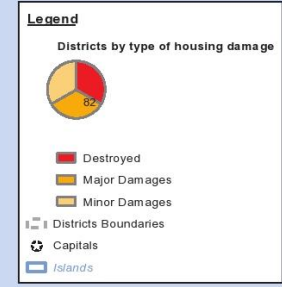
# Samoa: Tropical Cyclone Evan - Destroyed and damaged housing based on Initial Damage Assessments - 31 Dec 2012



Initial Damage Assessments (IDA) by Samoa Disaster Management Office indicated that 693 houses are completely destroyed, 546 houses are majorly damaged and 422 had minor damages. This map shows the number of damaged and destroyed houses by districts. The IDA results are also presented below in a table aggregated by districts.

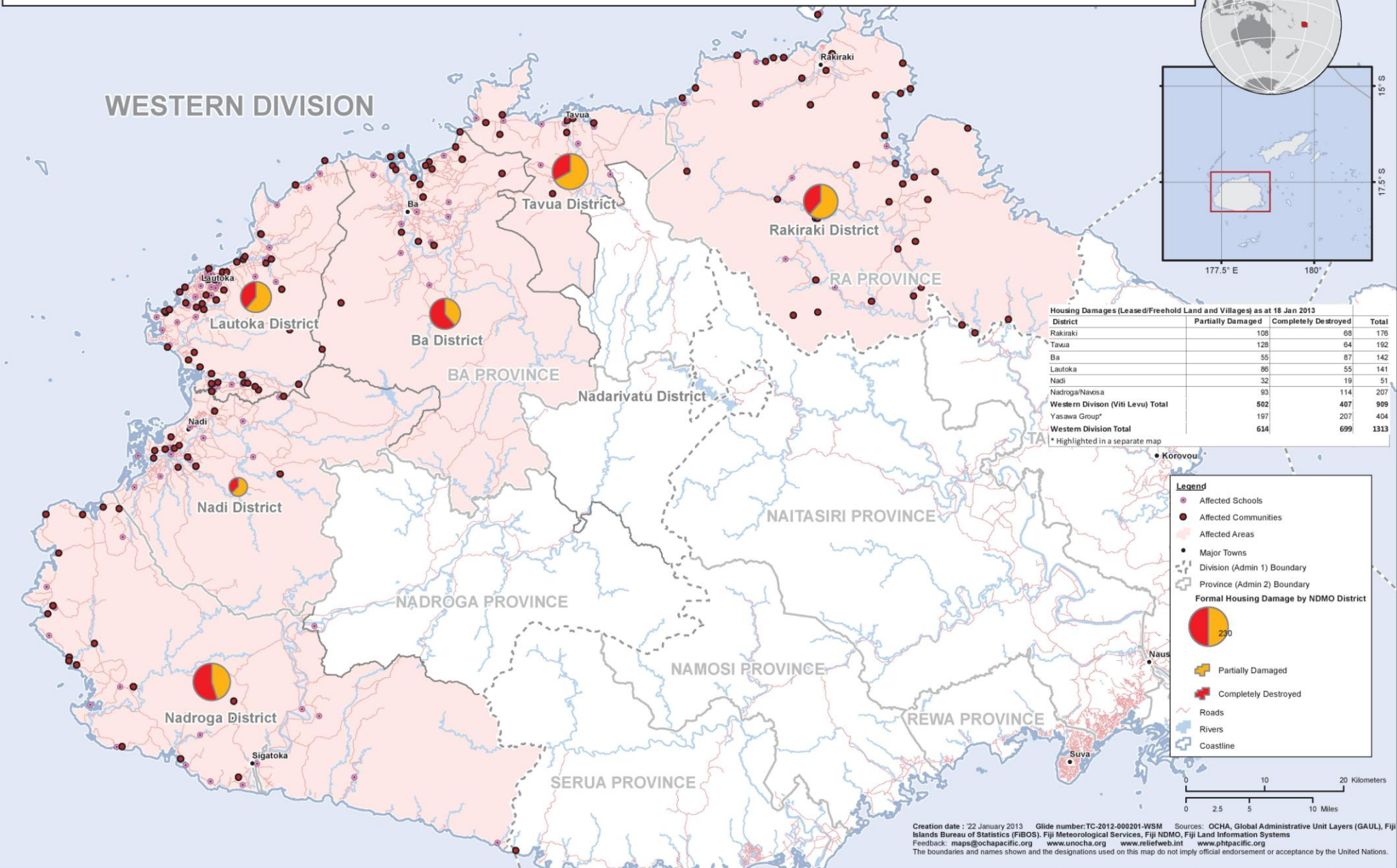


Samoa: Tropical Cyclone Evan - Initial Damage Assessment Results by Districts										
District Name	Census 2011 Information		Number of Households Damaged and People Affected							
	Households 2011	Population 2011	Households Destroyed *	People Affected - HH Destroyed	Households Major Damage *	People Affected - Major Damage	Households Minor Damage *	People Affected - Minor Damage	All Households Assessed	All People Assessed
Aana Alofi I	5964	1734	0	0	2	18	0	0	2	18
Aana Alofi II	3258	969	0	0	2	11	0	0	2	32
Aana Alofi III	5530	1618	0	0	0	0	4	32	4	32
Aiga i le Tai	5050	1456	9	78	5	39	16	116	30	233
Anoamaa East	4274	1197	63	443	31	213	21	129	117	799
Anoamaa West	4693	1281	44	343	45	320	18	173	119	907
Falealili	4546	1428	56	322	51	400	47	378	156	1110
Faleata East	12630	2935	5	40	7	54	5	36	18	145
Faleata West	18895	4694	1	23	3	34	5	32	9	89
Falealata / Samatau	3012	897	90	406	23	216	31	280	109	959
Leauvaa	3168	819	0	0	2	6	1	4	3	10
Lefaga / Faleseela	4005	1180	116	917	92	657	72	525	307	2271
Lepa	1337	352	1	9	1	6	0	0	2	15
Lotofaga	1859	561	1	2	0	0	2	2	3	4
Safata	5096	1803	145	1014	78	652	36	285	290	2151
Sagaga le Falefa	12104	3277	3	19	0	0	5	55	7	74
Sagaga le Usoga	5741	1528	0	0	2	11	0	0	2	11
Salamumu	378	123	0	0	1	9	2	21	3	30
Siumu	2281	661	73	469	38	274	35	250	146	999
Vaa o Fonoti	1543	477	9	45	5	40	1	12	15	97
Vaimauga East	7730	1881	24	166	26	186	19	163	69	515
Vaimauga West	24105	5275	95	789	132	1081	102	898	486	3587
<b>Total</b>	<b>137199</b>	<b>36146</b>	<b>693</b>	<b>5085</b>	<b>546</b>	<b>4227</b>	<b>422</b>	<b>3391</b>	<b>1899</b>	<b>14088</b>

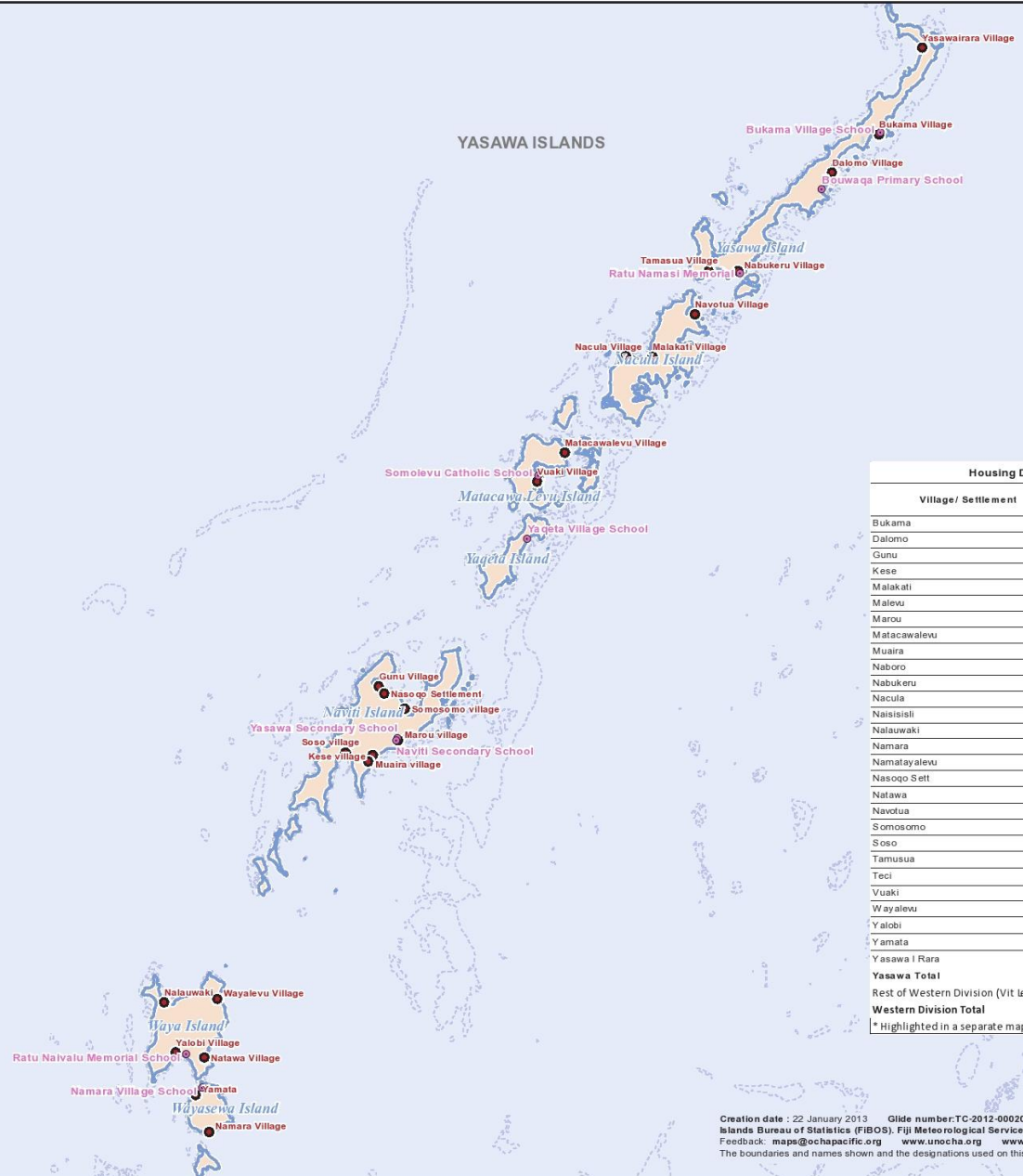
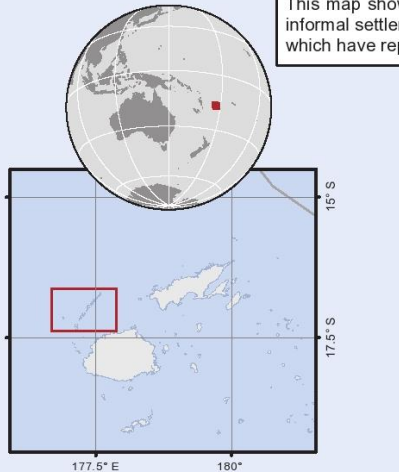


Creation date: 31 Dec 2012    Glide number: TC-2012-000201-WSM    Sources: GAUL, OCHA, Samoa Disaster Management Office, Samoa Bureau of Statistic, SPC  
 Feedback: maps@ocha.org    www.phl.pacific.org  
 The boundaries and names shown and the designations used on this map do not imply official endorsement or acceptance by the United Nations.

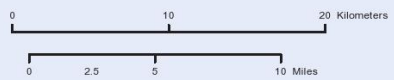
This map shows damages to dwellings recognized by the Government of Fiji as having legal owner occupiers, legal tenants or recognized settlements. NGOs will be undertaking a detailed shelter assessment of all informal settlements not included in formal assessments to be completed by the end of January. This map will be revised to include all housing damages once assessments are finalized. This map also identifies schools which have reported damages.



This map shows damages to dwellings recognized by the Government of Fiji as having legal owner occupiers, legal tenants or recognized settlements. NGOs will be undertaking a detailed shelter assessment of all informal settlements not included in formal assessments to be completed by the end of January. This map will be revised to include all housing damages once assessments are finalized. This map also identifies schools which have reported damages.



- Legend**
- Affected Schools
  - Affected Communities
  - Affected Areas
  - Major Towns
  - ▭ Division (Admin 1) Boundary
  - ▭ Province (Admin 2) Boundary
  - Roads
  - Rivers
  - Coastline
  - Reef

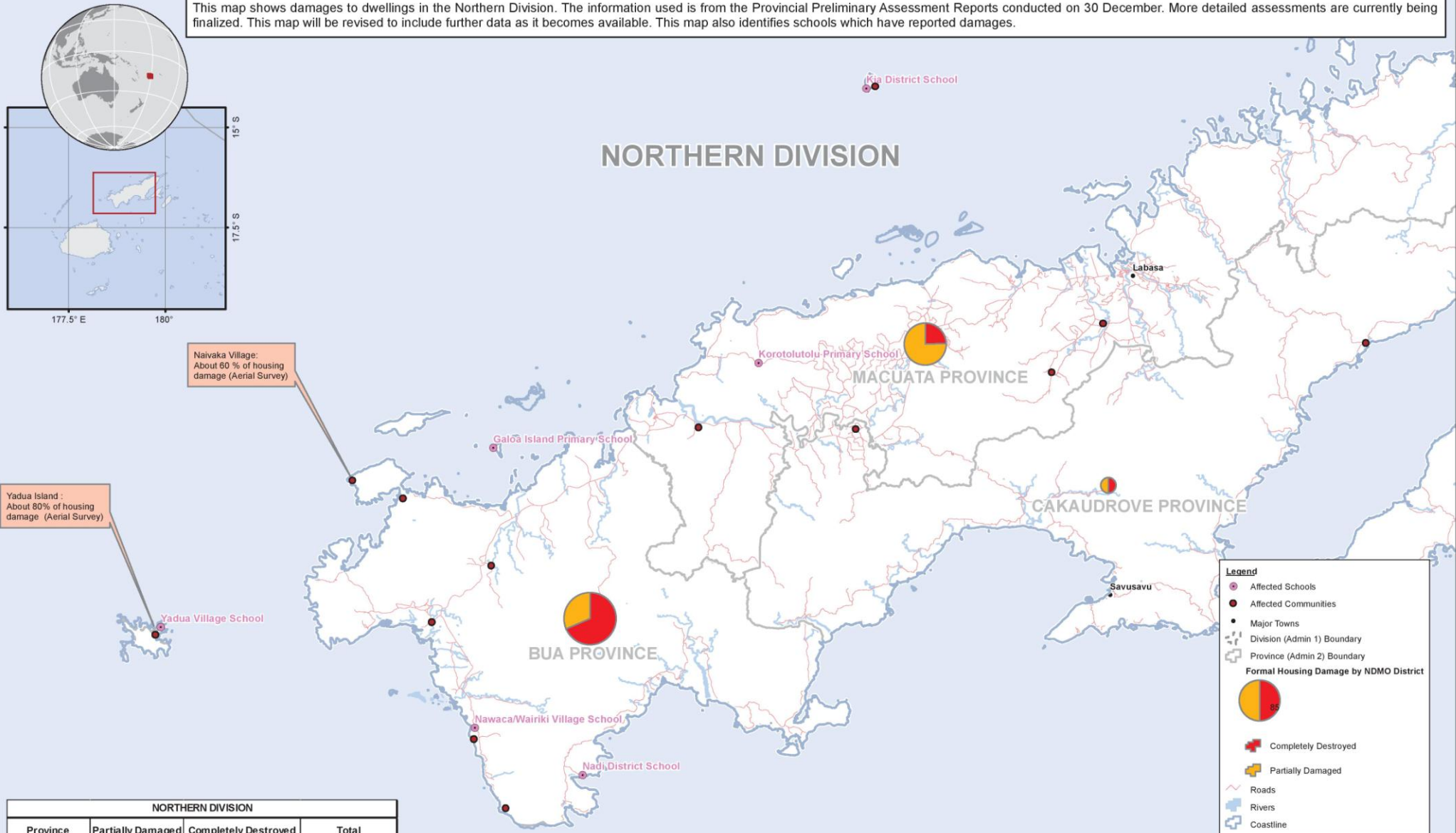


Housing Damage in the Yasawa Islands			
Village/ Settlement	Partially Damaged	Completely Destroyed	Total
Bukama	7	15	22
Dalomo	1	12	13
Gunu	16	16	32
Kese	11	6	17
Malakati	4	2	6
Malevu	6	6	12
Marou	7	3	10
Matakawalevu	3	0	3
Muaira	5	7	12
Naboro	11	5	16
Nabukeru	2	0	2
Nacula	5	6	11
Naisisisi	5	17	22
Nalauwaki	0	4	4
Namara	19	4	23
Namatayalevu	15	12	27
Nasoko Sett	1	1	2
Natawa	10	31	41
Navotua	15	0	15
Somosomo	9	3	12
Soso	6	2	8
Tamusua	9	3	12
Teci	6	6	12
Vuaki	10	15	25
Wayalevu	13	11	24
Yalobi	4	0	4
Yamata	1	4	5
Yasawa I Rara	5	7	12
<b>Yasawa Total</b>	<b>206</b>	<b>198</b>	<b>404</b>
Rest of Western Division (Vit Levu)	408	501	909
<b>Western Division Total</b>	<b>614</b>	<b>699</b>	<b>1313</b>

\* Highlighted in a separate map

This map shows damages to dwellings in the Northern Division. The information used is from the Provincial Preliminary Assessment Reports conducted on 30 December. More detailed assessments are currently being finalized. This map will be revised to include further data as it becomes available. This map also identifies schools which have reported damages.

# NORTHERN DIVISION



NORTHERN DIVISION			
Province	Partially Damaged	Completely Destroyed	Total
Cakaudrove	6	6	12
Bua	44	96	140
Macuata	68	22	90
<b>TOTAL</b>	<b>118</b>	<b>124</b>	<b>242</b>

Data Source: TC Evan Preliminary Assessment Report (Northern Division) as at 30/12/2012

**Legend**

- Affected Schools
- Affected Communities
- Major Towns
- Division (Admin 1) Boundary
- Province (Admin 2) Boundary
- Formal Housing Damage by NDMO District
- Completely Destroyed
- Partially Damaged
- Roads
- Rivers
- Coastline

