

Rapid Needs Assessment (RNA) of Conflict-Affected Areas

Eastern oblasts, Ukraine

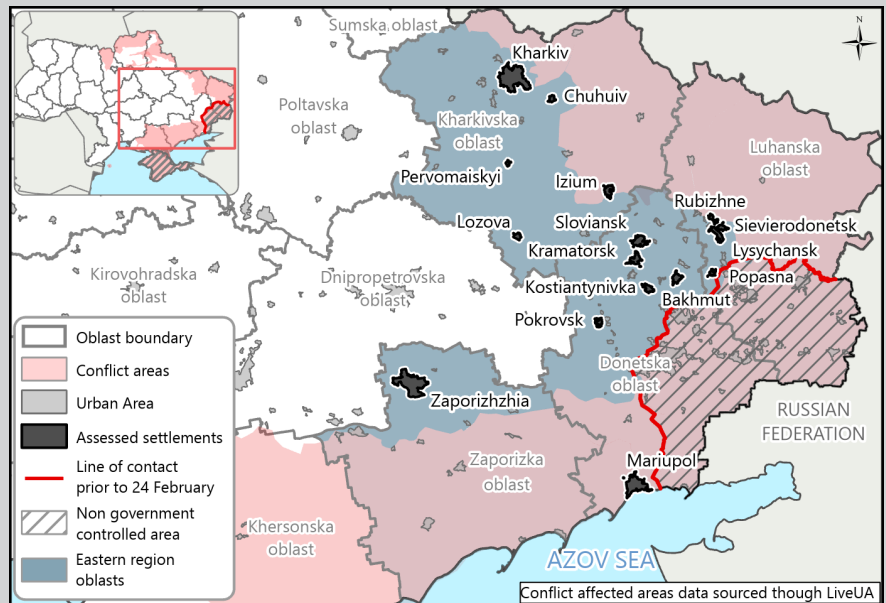
05 April 2022

Context and Methodology

Since the escalation of the Ukrainian conflict on Thursday, 24 February 2022, the humanitarian situation has quickly deteriorated and engulfed various geographies previously unaffected by conflict. In this context, the Inter-Cluster Coordination Group (ICCG), launched a Rapid Needs Assessment (RNA) with the support of IMPACT Initiatives.¹ The RNA examines settlements in conflict-affected areas in order to provide an understanding of the situation across a wide range of sectors and affected settlements. The RNA is designed to provide timely information on the needs and concerns in conflict-affected areas that may help in identifying locations most in need of assistance. Data was collected between the period of 22 to 28 March 2022 through telephone interviews.² Within the four eastern oblasts (Donetska, Kharkivska, Luhanska, and Zaporizka), up to five of the most populous settlements were targeted for data collection (see map of assessed settlements). Settlements that are not currently in government control were excluded from the sampling plan. Additionally, as some settlements were experiencing disruptions to telecommunications, it was not possible to ensure their equal participation in the assessment.³

This factsheet provides key findings based on information collected through this exercise. Findings should be considered indicative only.

Coverage of Assessed Oblasts



	Donetska	Kharkivska	Luhanska	Zaporizka	Overall
Population (pre-conflict)	4,057,888	2,597,606	2,102,287	1,637,392	10,395,173
# KIs ³	32	37	28	21	118
# Assessed settlements	6	5	4	1	16

Summary Findings

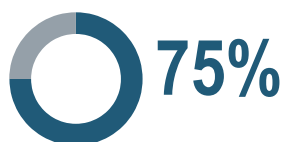
Concerns about security were reported in all assessed settlements. It was reported in 75% of assessed settlements that there had been damage to homes and in 88% of assessed settlements that damage to critical infrastructure such as school, industrial facilities, and health facilities was a concern. Respondents in half of the settlements reported that emergency shelters were only somewhat accessible (56%). Further displacement was expected by 94% of assessed settlements.

Amongst all assessed settlements, it was reported that access to medication, disruption to child wellbeing, disruption to transportation and/or fuel supply were concerns affecting everyday life (see table on Page 3). **It appears that in addition to Kharkiv and Mariupol, both of which have received wide international media attention, settlements with elevated need of assistance may include Izium (Kharkivska oblast); and Lysychansk, Popasna, and Sievierodonetsk (Luhanska oblast) where needs were widely reported across the areas investigated in the RNA.**

Nightlight analysis (pages 4 - 6) suggests the profound affect the escalation has had on everyday living in the eastern region. Further investigation in the form of damage analyses appears to be needed for the settlements of Izium and settlements in Luhanska.

🏠 Shelter

% of settlements in which damage to housing was reported as a concern:



- Amongst this group, it was reported in **50% of settlements a quarter or more of dwellings were damaged** since the escalation of the conflict. The settlements reporting the highest proportion of dwellings affected were **Sieverodonetsk, Popasna, and Izium** (more than 75% of dwellings).
- **Lack of housing was reported as a concern in 69% of the assessed settlements.** Notably, lack of housing was a commonly reported reason for expected further displacement in the coming weeks (31% of settlements).

➡ Displacement

% of settlements in which it was reported that a quarter or more of the population had displaced:



- While it was reported in **all assessed settlements that people had been displaced since the escalation**, only half reported that more than 25% of the population had relocated.
- **Expectation of further displacement was reported in 94% of assessed settlements** — with another quarter or more of the population reportedly considering relocation from Mariupol, Izium, Popasna, and Sieverodonetsk.
- Common reasons for further displacement included security concerns (100% of settlements), damage to housing (63%), and disrupted access to food (31%) or medicines (31%).

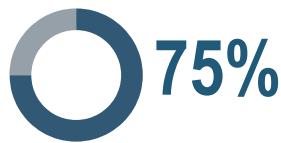
Rapid Needs Assessment (RNA) of Conflict-Affected Areas

Eastern oblasts, Ukraine

05 April 2022

Food and Markets

% of settlements in which access to food was reported as a concern:



- Amongst this group, it was reported in **67% of settlements that food items were inaccessible** in the 7 days prior to data collection. Of these, 50% reported that more than half of the population was affected by lack of access.
- The settlements reporting the highest proportion of population affected by lack of access to food items were **Sievierodonetsk, Popasna, and Izium** (more than 75% of the population). Note, however, that respondents in Mariupol and Rubizhne refused to answer this question.

Financial Services

% of settlements in which access to financial services was reported as a concern:



- Amongst the assessed settlements reporting access to financial services as a concern, **57% reported that services were inaccessible** in the 7 days prior to data collection.
- Services were reported to be very inaccessible in **Mariupol**, in 3 out of 5 settlements in Kharkivska oblast (**Chuhuiv, Kharkiv, and Izium**) and 5 out of 5 settlements in Luhansk oblast (**Rubizhne, Lysychansk, Popasna, Sievierodonetsk, Kreminna**).

WASH

% of settlements in which disruption to water supply was reported as a concern:



- Amongst the assessed settlements in which disruption to water supply was reported as a concern, **63% reported that the supply was disrupted on at least a daily basis** in the 7 days prior to data collection.
- The most common frequency of stoppage in these areas was 'all the time', and it was reported in the following settlements: **Kramatorsk and Mariupol** (Donetska oblast); **Izium** (Kharkivska oblast); and **Lysychansk, Popasna, and Rubizhne** (Luhanska oblast).

Utilities

% of settlements in which disruption to utilities (electricity, gas, heating) was reported as a concern:



- Amongst the assessed settlements that reported disruption to utilities as a concern, **71% reported a disruption to heating on at least a daily basis**, while 57% reported daily disruption to electricity and 50% reported daily disruptions to gas.
- It was reported that **Kramatorsk and Mariupol** (Donetska oblast); **Izium** (Kharkivska oblast); and **Lysychansk, Popasna and Sievierodonetsk** (Luhanska oblast) were experiencing complete stoppage to heating at the time of data collection.

Healthcare

% of settlements in which disruption to healthcare services was reported as a concern:



- Amongst these settlements, **63% reported that emergency healthcare services had been inaccessible** in the 7 days prior to data collection. Of these, 75% reported that more than half of the population was affected by lack of access.
- Services were reported to be very inaccessible in **Mariupol, Izium, Popasna, and Rubizhne**.
- It was also reported in **all settlements that access to medication** was a concern.

Child welfare

% of settlements in which disruption to child welfare services was reported as a concern:



- Amongst the assessed settlements, **81% also reported a disruption to education services** — this excluded Lozova, Pervomaiski, and Pokrovsk.
- Sixty-nine percent (69%) of assessed settlements reported that schools or education facilities had been damaged. This was reported in **Kostiantynivka, Sloviansk, and Mariupol** (Donetska oblast); **Chuhuiv, Izium, Kharkiv, and Lozova** (Kharkivska oblast); and **Lysychansk, Rubizhne, Popasna, and Sievierodonetsk** (Luhanska oblast).

Rapid Needs Assessment (RNA) of Conflict-Affected Areas

Eastern oblasts, Ukraine

05 April 2022

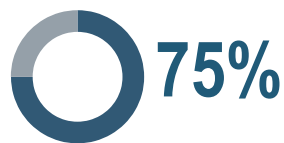
Reported concerns by assessed settlement:

Types of concern	Donetska						Kharkivska					Luhanska				Zapo.
	Bakh.	Kost.	Kram.	Mari.	Pokr.	Slov.	Chuh.	Iziu.	Khar.	Lozo.	Perv.	Lysy.	Popa.	Rubi.	Siev.	Zapo.
Access to medication																
Disruption to child wellbeing services																
Disruption to transportation/fuel supply																
Insecure environment																
Access to financial services																
Disruption to work or livelihoods																
Family separation																
Access to essential items																
Access to education																
Access to food																
Damage to housing																
Access to administrative services																
Lack of housing																
Access to medical services																
Disruption to water supply																
Access to social services																
Damage to infrastructure																
Disruption to utilities																
Disruption to telecommunications																

Bakhmut (Bakh.); Kostiantynivka (Kost.); Kramatorsk (Kram.); Mariupol (Mari.); Pokrovsk (Pokr.); Sloviansk (Slov.); Chuhuiiv (Chuh.); Iziium (Iziu.); Kharkiv (Khar.); Lozova (Lozo.); Pervomaiskyi (Perv.); Lysychansk (Lysy.); Popasna (Popa.); Rubizhne (Rubi.); Sievierodonetsk (Siev.); Zaporizhzhia (Zapo.).

Modality of Assistance

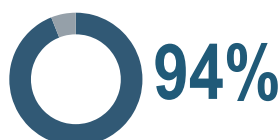
% of settlements in which in-kind goods is the preferred mode of assistance:



- Notably, **most assessed settlements reported a preference for in-kind assistance.** This may be due to food and non-food items being reported inaccessible in many settlements.
- Preference for multi-purpose cash assistance was reported in Chuhuiiv (Kharkivska oblast); Zaporizhzhia; and Sloviansk and Kramatorsk (Donetska oblast). Notably, these are settlement in which food inaccessibility was not reported.

Movement and access

% of settlements in which restrictions on movement in and out of the settlement were reported:



- **Movement in and out of the settlement was reported to be restricted a lot or completely in 33% settlements.** This included Sievierodonetsk, Rubizhne, and Popasna (Luhanska oblast); Iziium (Kharkivska oblast); Mariupol (Donetska oblast).
- **Humanitarian convoy was perceived as the best method for sending assistance** to Sievierodonetsk and Lysychansk (Luhanska oblast); Iziium (Kharkivska oblast); Mariupol and Konstantinivka (Donetska oblast). It was reported in other settlements that road/rail transport could be used.

Humanitarian information needs

% of settlements by types of information reportedly most needed by households in the settlement:⁴

- How to get food and water **67%**
- How to register for assistance **50%**
- How to get healthcare/medical attention **42%**
- How to relocate or evacuate **42%**
- How to get shelter/accommodation/shelter materials **42%**
- Information about humanitarian assistance and agencies **33%**
- How to get money/financial support **33%**
- News on what is happening in the settlement **25%**
- How to find missing people **8%**

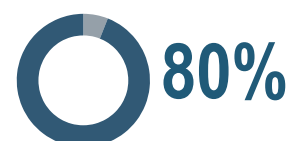
Information sources

% of settlements by source used by households to get information related to humanitarian assistance:

- Friends/neighbors/family **69%**
- Telegram **38%**
- Social networks **25%**
- Face-to-face conversation with NGO/Government **19%**
- NGO/Government websites **6%**
- AM/FM radio **6%**

Damage Infrastructure

% of settlements that reported damage to critical infrastructure:



- These settlements included Mariupol (Donetsk oblast); Chuhuiiv, Iziium and Kharkiv (Kharkivska oblast); and Lysychansk, Popasna, and Sievierodonetsk (Luhanska oblast).

Rapid Needs Assessment (RNA) of Conflict-Affected Areas

Eastern oblasts, Ukraine

05 April 2022

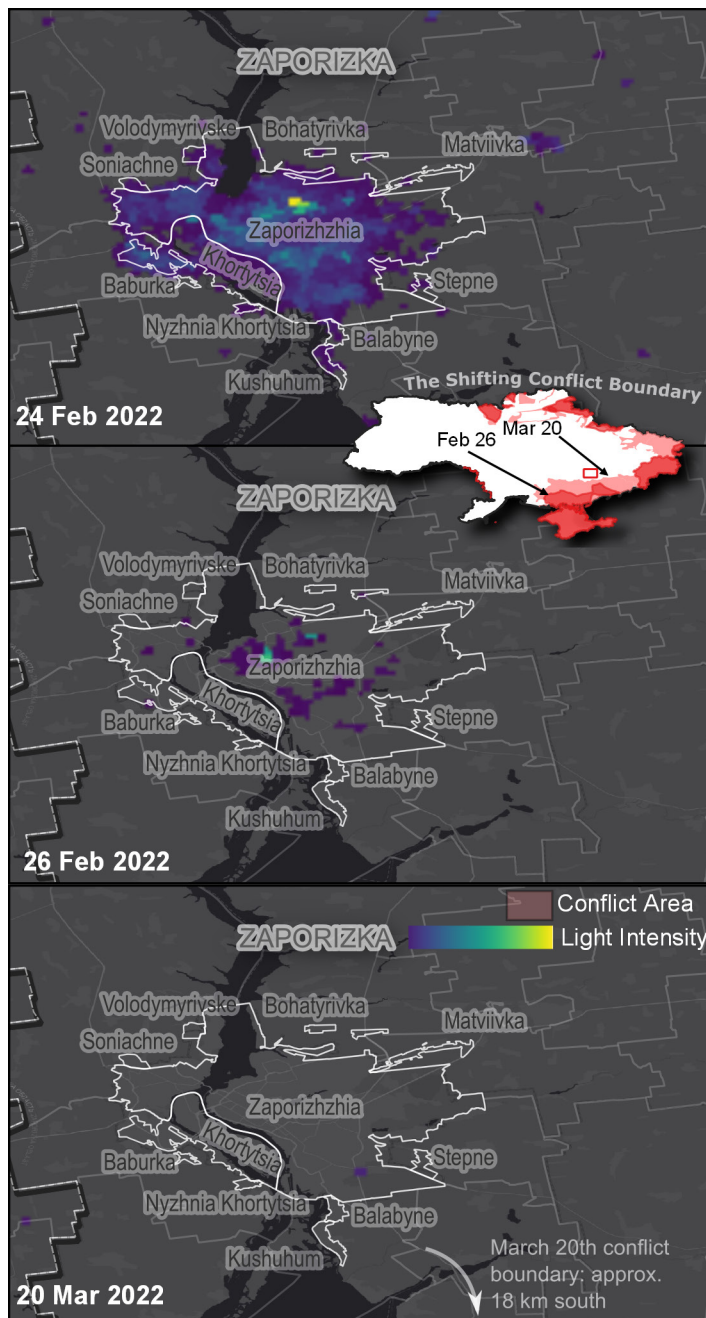
Comparative night-light luminosity analysis: pre- and post-escalation nightlight

Night-light luminosity analysis has been conducted to better understand the impact of hostilities on densely populated urban areas in Ukraine. Night-light luminosity, a measure of surface radiance captured by the [Visible Infrared Imaging Radiometer Suite \(VIIRS\)](#), is frequently used as a [proxy indicator for change in economic prosperity in settlements and countries](#).

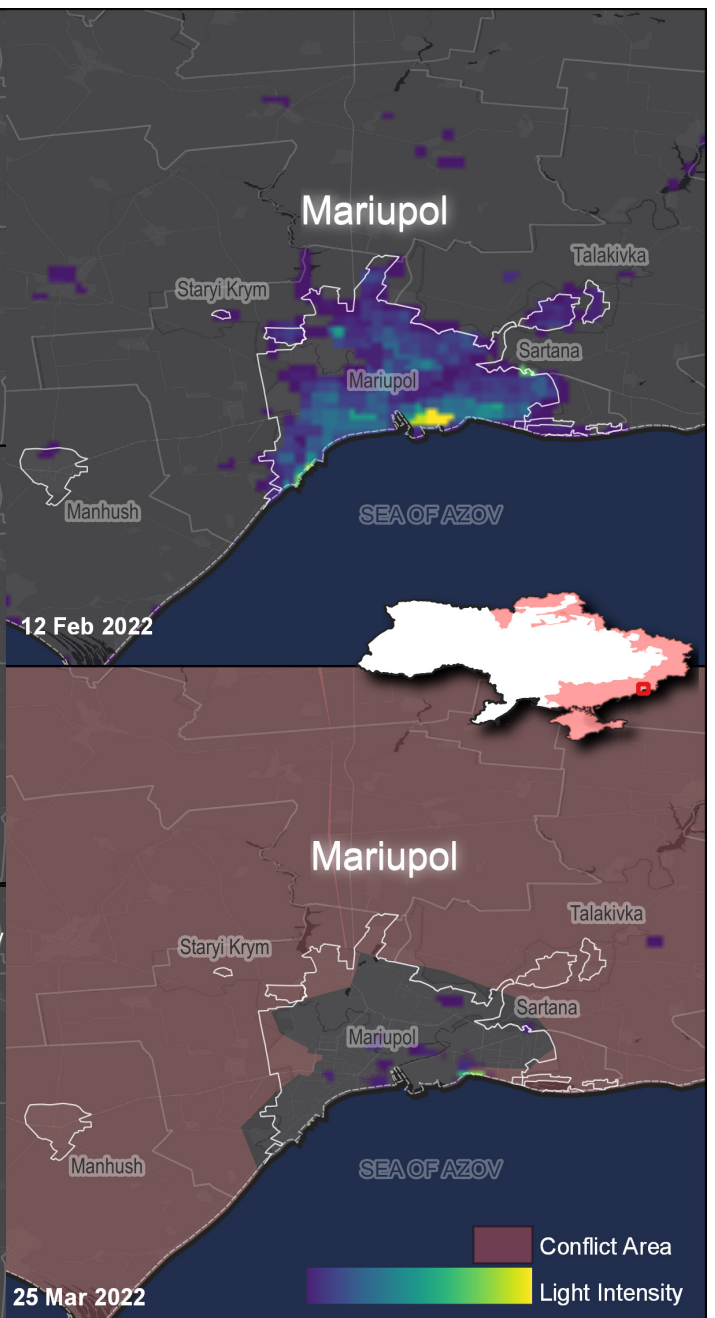
The maps on this and the following two pages summarise the analysis undertaken on luminosity emanating from 1) Zaporizhia city and its surrounds, 2) Mariupol city and its surrounds, 3) Luhansk oblast and northern Donetsk oblast, 4) Kharkiv oblast, before and after the escalation. Luminosity measurements are compared across two to three points in time.

The observed decline in nightlight luminosity may be caused by the following non-exclusive list of factors: a) damage, close-down or decreased activity of urban infrastructure; b) damage of public infrastructure; c) change in human activity connected to the norms established through martial law; d) change in human activity connected to the evacuation and relocation of residents to other parts of the country or neighboring countries.

Zaporizhia (Zaporizka oblast)



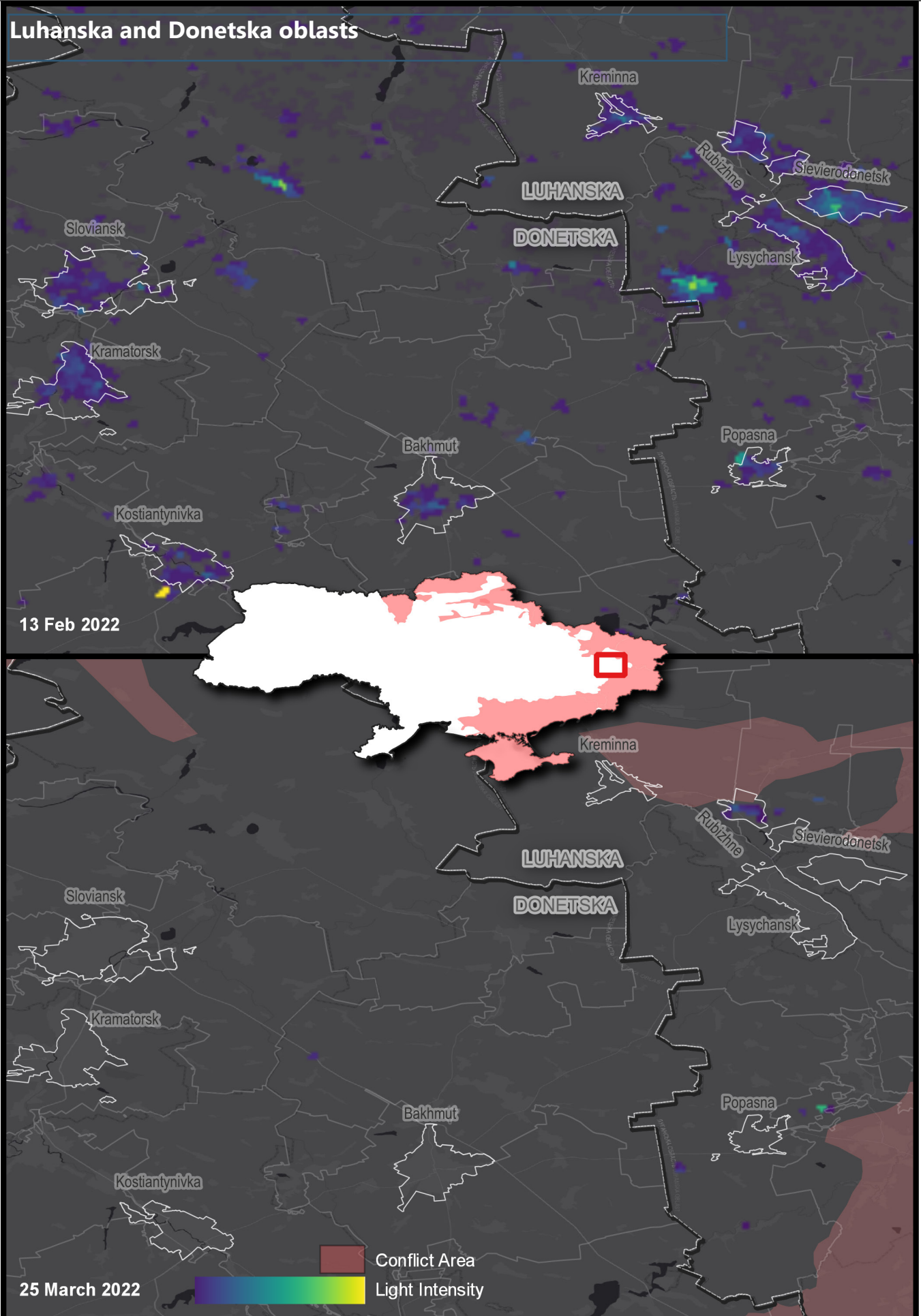
Mariupol (Donetska oblast)



Rapid Needs Assessment (RNA) of Conflict-Affected Areas

Eastern oblasts, Ukraine

05 April 2022



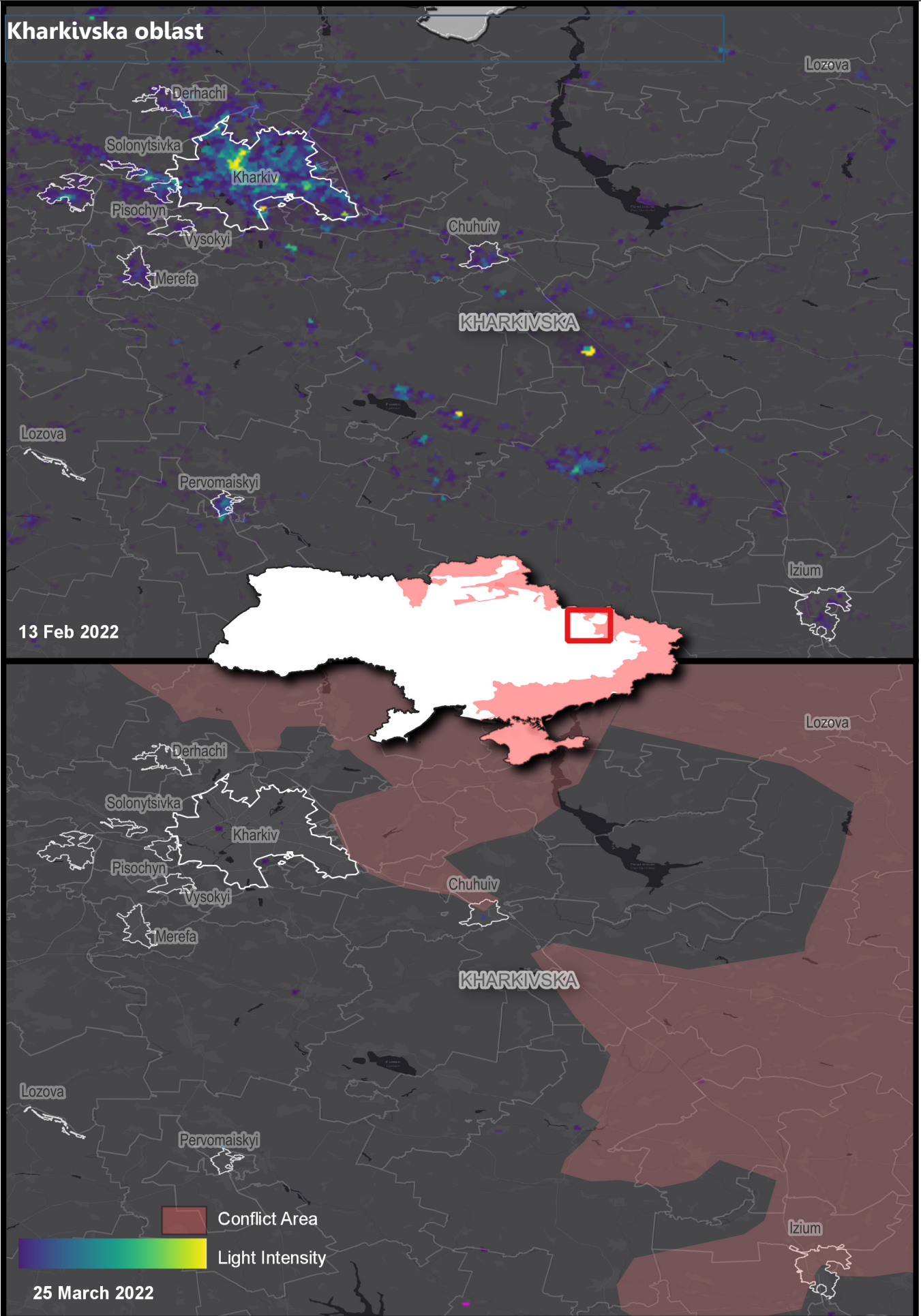
IMPACT

Shaping practices
Influencing policies
Impacting lives

Rapid Needs Assessment (RNA) of Conflict-Affected Areas

Eastern oblasts, Ukraine

05 April 2022



IMPACT

Shaping practices
Influencing policies
Impacting lives

Rapid Needs Assessment (RNA) of Conflict-Affected Areas

Eastern oblasts, Ukraine

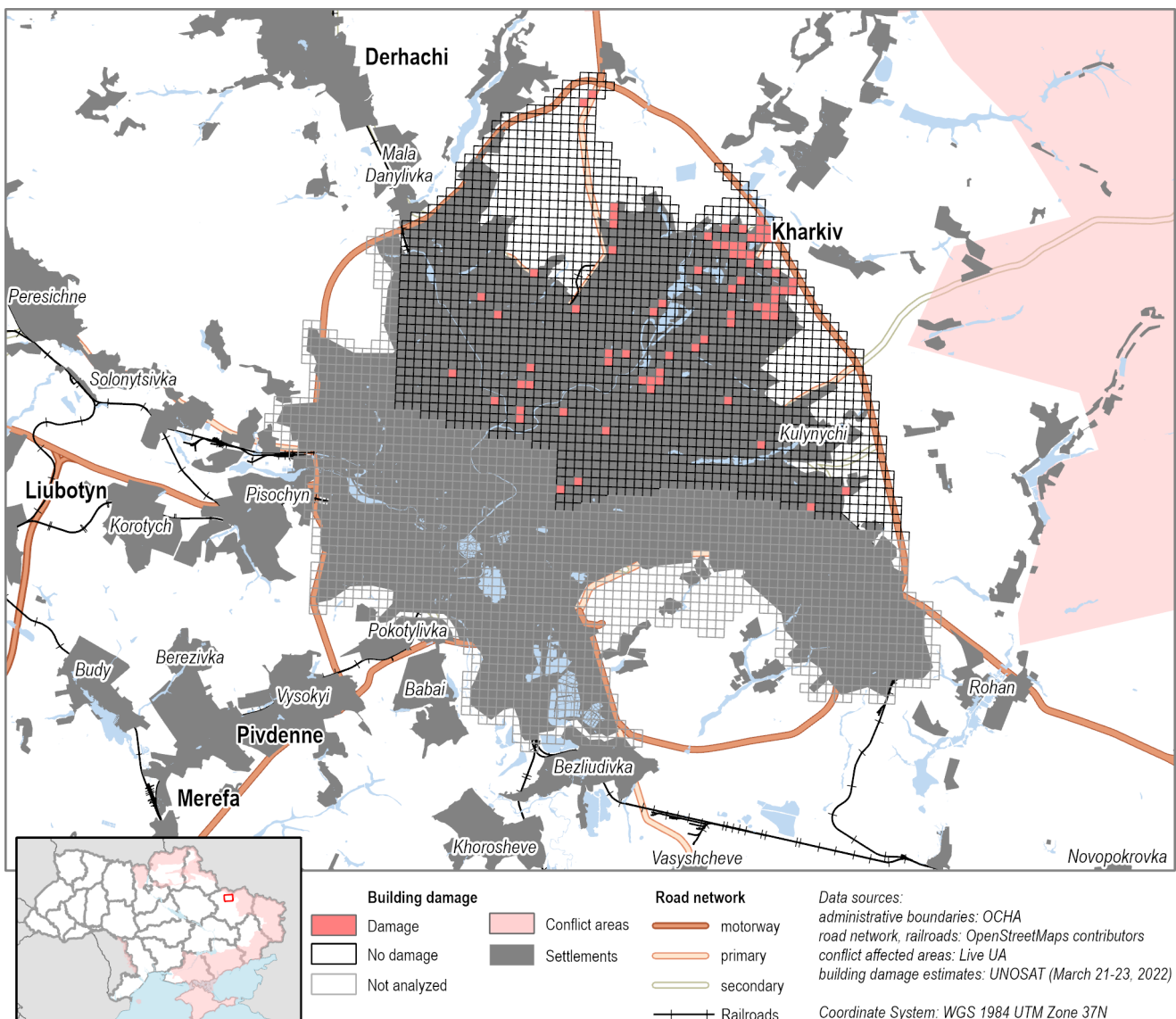
05 April 2022

Damage analysis: Kharkiv

This map illustrates a satellite imagery-based Rapid Damage Building Assessment (RDBA) in the north of Kharkiv, Ukraine. The RDBA divides the area of interest into 0.5km x 0.5km cells, each of which is analyzed to determine whether or not there are damaged buildings inside the cell. If so, the cell is marked "damaged". Approximately half of the city has been processed as of this publishing.

Based on high-resolution WorldView imagery collected between 21 and 23 March 2022, analysts found that areas in 72 cells out of 1,866 cells in the north of Kharkiv had sustained visible damage. This represents approximately 4% of the cells over the city, which may increase as more imagery is analyzed.

This analysis is based on structures that are visibly, significantly damaged as of 23 March 2022. As this imagery may contain cloud cover, and not all damage is visible from a top-down view, the final product may not account for all possible damages.



Conflict-Affected Areas sourced from LiveUA.
Cells with building damage cells data sourced from UNOSAT.

Rapid Needs Assessment (RNA) of Conflict-Affected Areas

Eastern oblasts, Ukraine

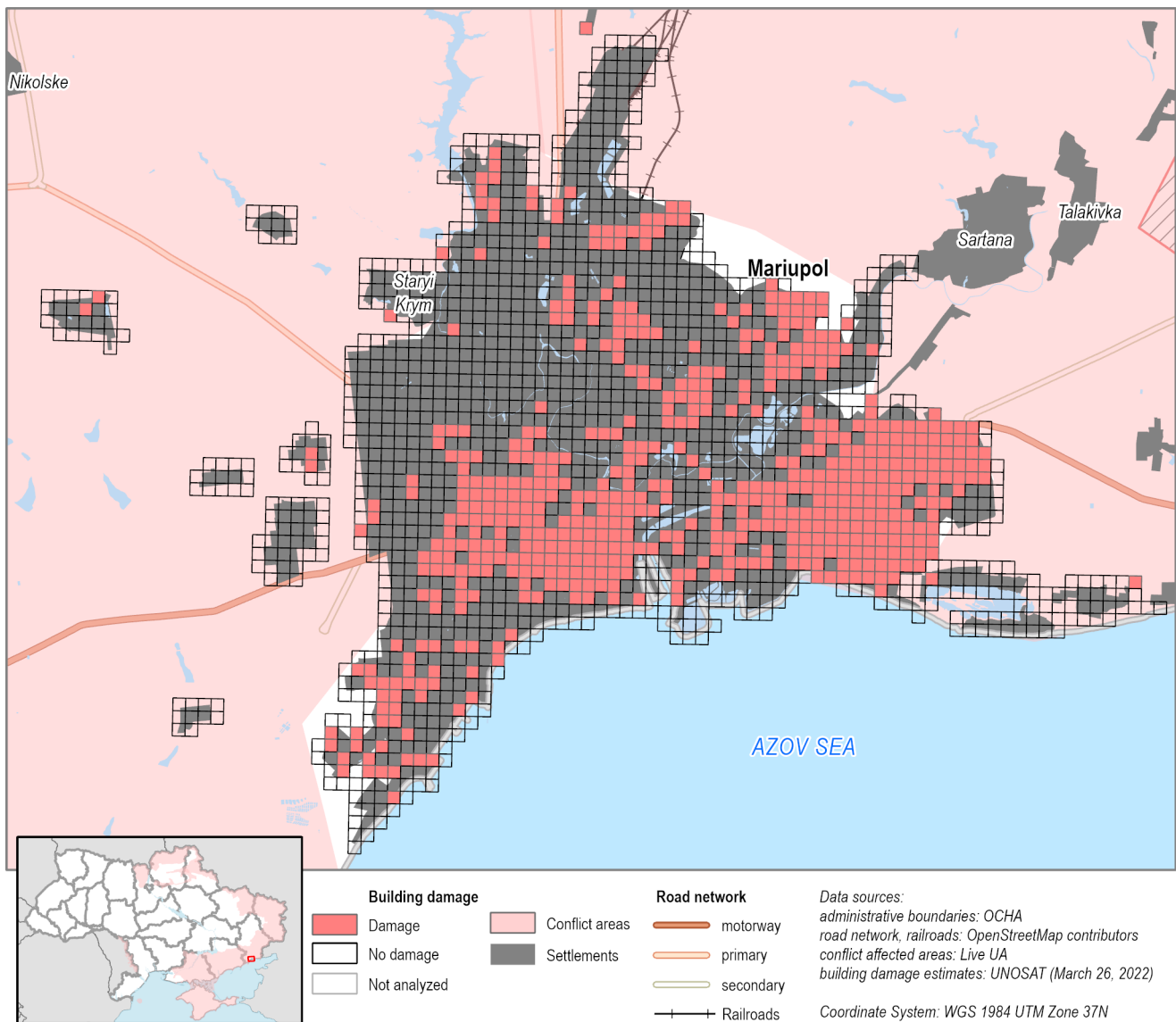
05 April 2022

Damage analysis: Mariupol

This map illustrates a satellite imagery-based Rapid Damage Building Assessment (RDBA) in Mariupolska Hromada, Ukraine. The RDBA divides the area of interest into 0.5km x 0.5km cells, each of which is analyzed to determine whether or not there are damaged buildings inside the cell. If so, the cell is marked "damaged".

Based on high-resolution WorldView imagery collected on 26 March 2022, analysts found that 556 cells out of 3,456 sustained visible damage. This represents approximately 44% of the cells over the city and 16% of the hromada, which may increase as more imagery is analysed. Note that not all 6,456 cells include buildings, and while numerous craters are also visible in the fields, they were not taken into account for this analysis.

This analysis is based on structures that are visibly, significantly damaged as of 26 March 2022. As this imagery may contain cloud cover, and not all damage is visible from a top-down view, the final product may not account for all possible damages.



Conflict-Affected Areas sourced from LiveUA.
Cells with building damage cells data sourced from UNOSAT.

Rapid Needs Assessment (RNA) of Conflict-Affected Areas

Eastern oblasts, Ukraine

05 April 2022

Endnotes:

1. The RNA questionnaire was developed in close consultation between IMPACT Initiatives and the ICCG.
2. Key informant interviews included employees of local institutions, non-government organisations, civil society, and individual volunteers.
3. Individual respondent answers were aggregated to the settlement level in a two-fold manner. Multiple choice questions were recorded to what in instances where less than half (49%) of respondents reported an issue; responses which were the majority (more than 50% of respondents) were assumed to be the most likely to reflect the situation at the settlement level. Aggregation of responses to single choice questions were done by selecting the most common response for the settlement.
4. Respondents in Chuhuiv, Iziium, Lozova, Pervomaiskyi did not report any information needs, and were respectively excluded from the calculation of this indicator.