

Shelter/NFI Sector Presentation on LABONDO LOCAL INTEGRATION PROJECT (DURABLE SOLUTIONS)

ADAMAWA, NIGERIA

23/02/2023



DURABLE SOLUTION PROJECT IN LABONDO

AIM

The pilot project aims to contribute to the government's holistic approach to durable solutions. Primarily to enable the local integration of displaced persons and the reintegration of refugee returnees in Adamawa State and assist the host community living mainly in Girei LGA, in strengthening its resilience and alleviating pressure.

OBJECTIVES

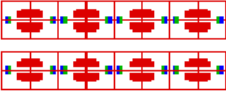





- Enable access to sustainable solutions and services (health, education, documentation) by implementing the Local Action Plan through Quick Impact Projects (Market stall, Primary Health care, School, Community Center and etc.)
- Provide livelihoods through training and business creation for 280 households.
- Provide housing support to 454 households (2270 individuals).

DURABLE SOLUTION PROJECT IN LABONDO

PROPOSED LABONDO SITE PLAN, GIREI LGA

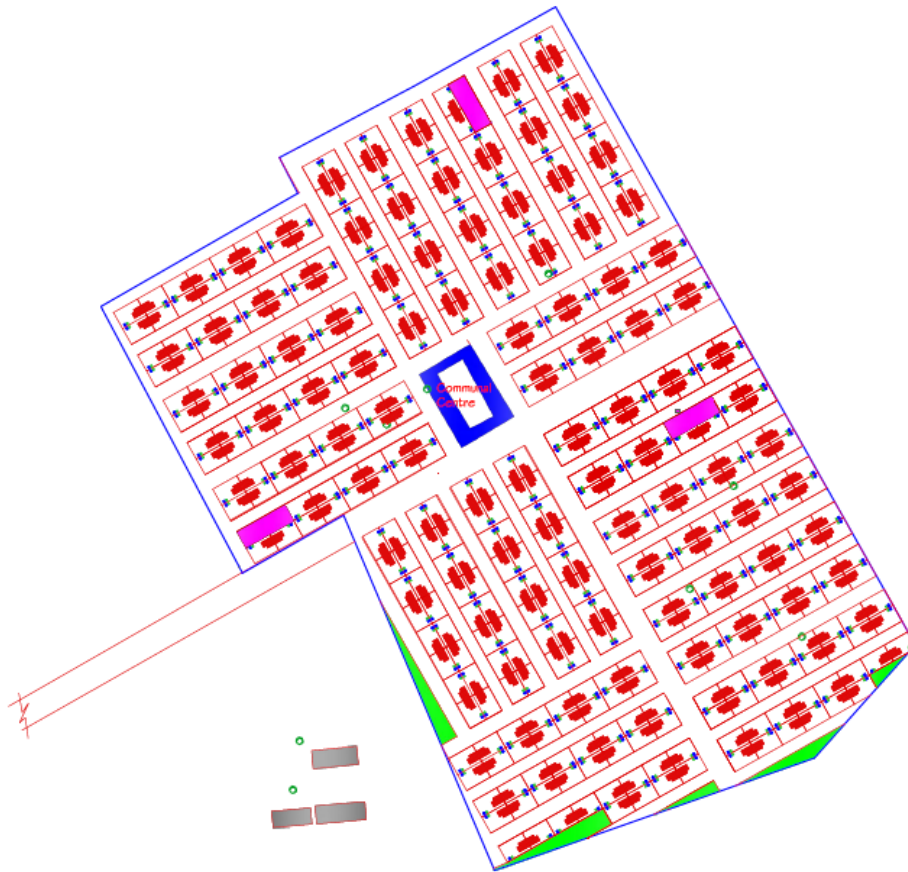


LEGEND

- Site Boundary
-  Shelter Cluster
-  Proposed Water Point
-  Proposed Communal Centre
-  Green Areas
-  Existing Primary School
-  Existing Trees

NOTE

Number of Shelter on layout- 226 (452 HH)
Size of plot/HH- 12x18m
Size of Cluster- 144m x 56m
Size of Major Roads 20m
Size of Minor Roads 10m
Space from the front of plot to Shelter- 2m



Produced By:
UNHCR Shelter Unit
Sub Office Maiduguri
March, 2022



DURABLE SOLUTION PROJECT IN LABONDO

Aerial View



Detail activities of work

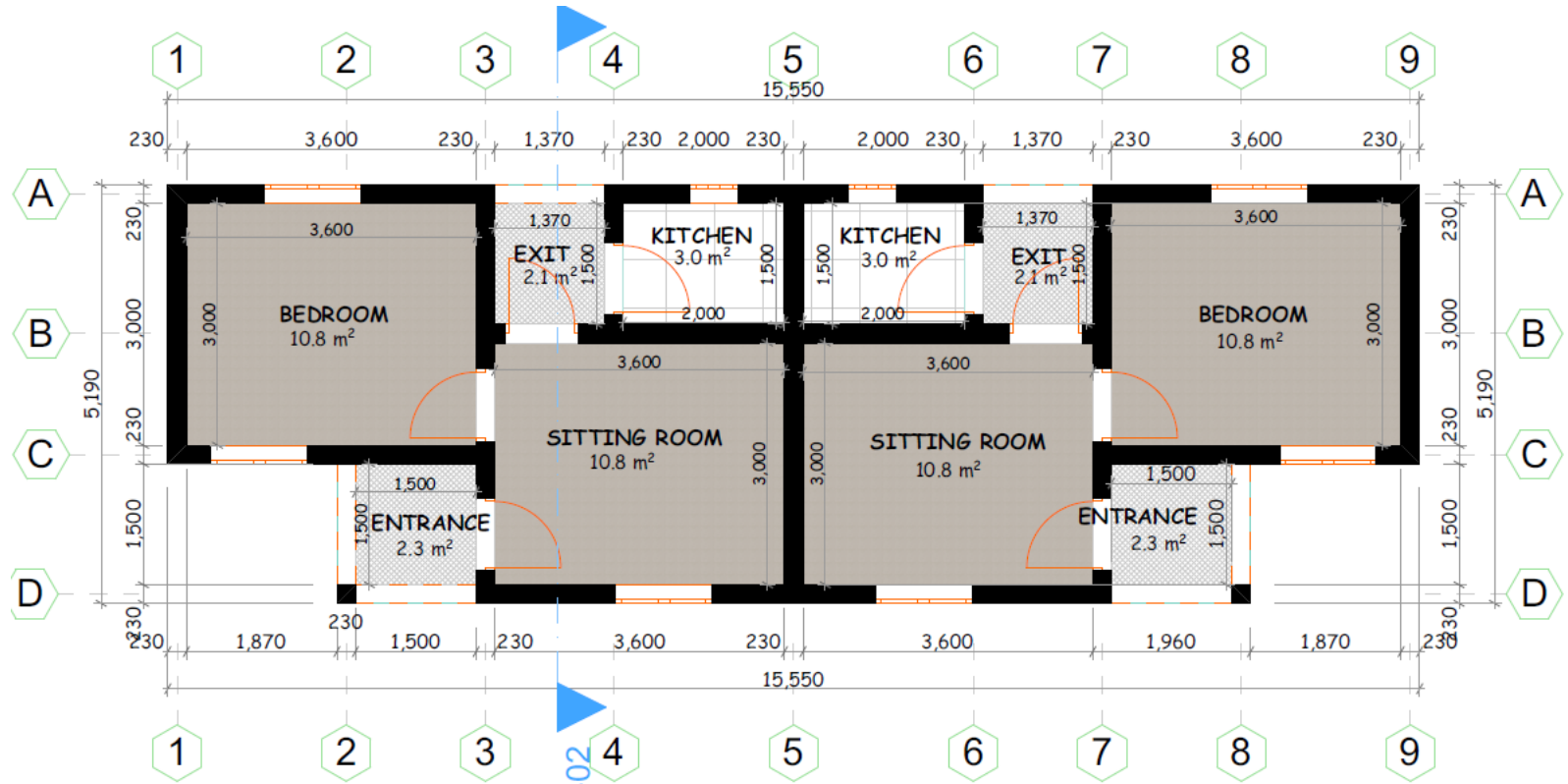
- Site assessments and site selection
- Preparation of shelter design
- Preparation of site plan design
- Training on bricks/blocks production and construction of shelter
- Site Survey
- Site clearance
- Plotting of plots and setting out.
- Drilling of boreholes and construction of elevated water tanks.
- Environmental Impact Assessment (EIA), Geographical Information System (GIS), and Site Assessment Report (SAR).
- Sub structure works
- Superstructure works
- Supply and fixing of doors, window and other finishing works as per BoQ
- Roofing

DURABLE SOLUTION PROJECT IN LABONDO

Settlement Details:

- Total Area: 15 hectares = 150'000 =m²
- Number of Housing Units on layout 227 (454 HH)
- Size of plot/HH 12 x 18 m = 216 m²
- Size of Cluster 144m x 56 m = 8'064 m² (16 Housing Units)
- Size of Major Roads 20 m
- Size of Minor Roads 10 m
- Space from the front of plot to Shelter 2 m

DURABLE SOLUTION PROJECT IN LABONDO



0.

Ground Floor

1:50

Total area = 73.4m²
Total usable area = 58m²

FLOOR PLAN

Shelter Settlement Typology Details:

- Partner using ISSB – 51 Units
- Contractor driven using Sandcrete block- 176 Units

Quick Impact Projects include;-

- Construction of 2 blocks of classrooms
- Construction of 2 two market stall
- Renovation of one block of classroom
- Construction of community center
- Construction of primary health care

DURABLE SOLUTION PROJECT IN LABONDO

Typical photo using ISSB



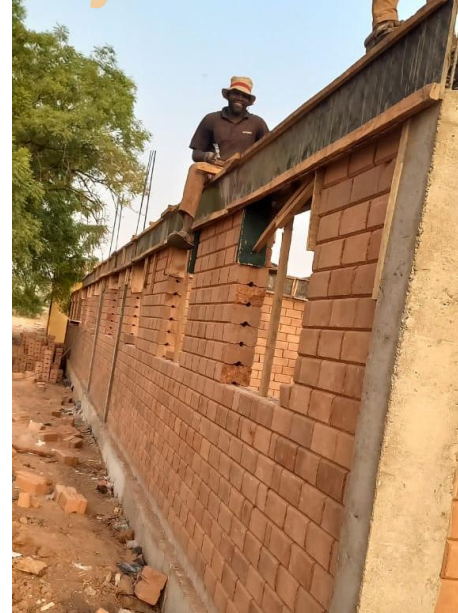
DURABLE SOLUTION PROJECT IN LABONDO

Typical photo using Sandcrete blocks



DURABLE SOLUTION PROJECT IN LABONDO

Quick Impact Projects



DURABLE SOLUTION PROJECT IN LABONDO

Classroom Construction Using ISSB



General Construction Challenges

- Delays in construction activities due to heavy rainfall in Adamawa.
- Hard rocks encountered during latrine excavation is delaying the construction of latrines.
- Delay in mobilization to site by the major contractor
- Delay due to non-adherence of specification by contractors and partners.
- Non availability of cash to pay workers hindering the progress of construction.