


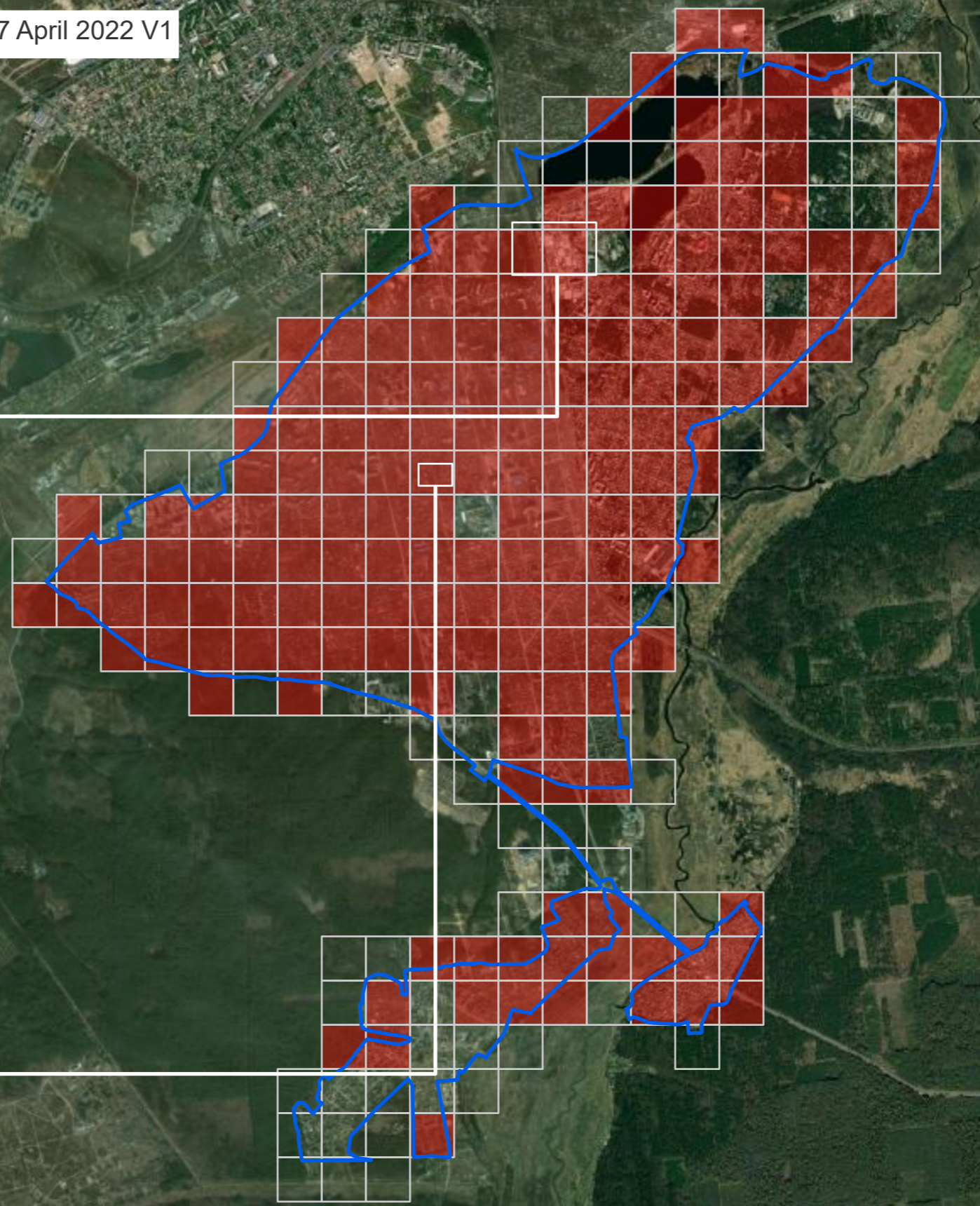
# UKRAINE

## IRPIN CITY, KYIVSKA OBLAST

IMAGERY ANALYSIS: 31 March 2022 PUBLISHED: 07 April 2022 V1


 % TOTAL VISIBLY DAMAGED CELL  
**71%**

TOTAL AREA OF IRPIN  
**44km<sup>2</sup>**



**COMPLEX EMERGENCY**  
CE20220223UKR



### UNOSAT Damage Assessment Overview Map

This map illustrates a satellite imagery-based Rapid Damage Building Assessment (RDBA) in Irpin City, Kyiv Oblast, Ukraine. The RDBA divides the city into 500m x 500m cells, each of which is analyzed to determine whether or not there are damaged buildings inside the cell.

Based on imagery collected on 31 March 2022, analysts found that 176 cells out of 246 in the City of Irpin sustained visible damage. This represents approximately 71% of the cells over the city.

This analysis is based on structures visibly damaged as of 31 March 2022 as seen in marginally degraded satellite imagery affected by light clouds and other limiting factors. This is a preliminary analysis and has not yet been validated in the field. Please send ground feedback to United Nations Satellite Centre (UNOSAT).

#### Legend

-  Irpin City
- Damage**
-  Damage
-  No Visible Damage

Spatial Reference  
Name: WGS 1984 Web Mercator Auxiliary Sphere  
PCS: WGS 1984 Web Mercator Auxiliary Sphere  
GCS: GCS WGS 1984  
Datum: WGS 1984  
Projection: Mercator Auxiliary Sphere

Satellite data: WorldView-3  
Acquisition date: 31 March 2022  
Resolution: 50 cm  
Copyright: © 2022 Maxar  
Source: US Department of State, Humanitarian Information Unit, NextView License

Boundaries data: OCHA  
Other data: UNOSAT  
Analysis: United Nations Satellite Centre (UNOSAT)  
Production: United Nations Satellite Centre (UNOSAT)

