



AGENDA USWG 23rd OCTOBER

- Minar Thapa, CRS Pakistan **"A settlement planning framework for multi-sectoral integration through Area-Based Recovery in Pakistan"**
 - Vito Trani, UNHCR El Salvador Representative and Alberto Pantaleón SC **" From crisis to solutions. Coordinated Shelter & Settlement Responses in el Salvador"**
 - Pablo Medina and Mamen Sancha GSC **"How the settlement approach complements the ongoing humanitarian reset"**
- 
- 
- 
- 

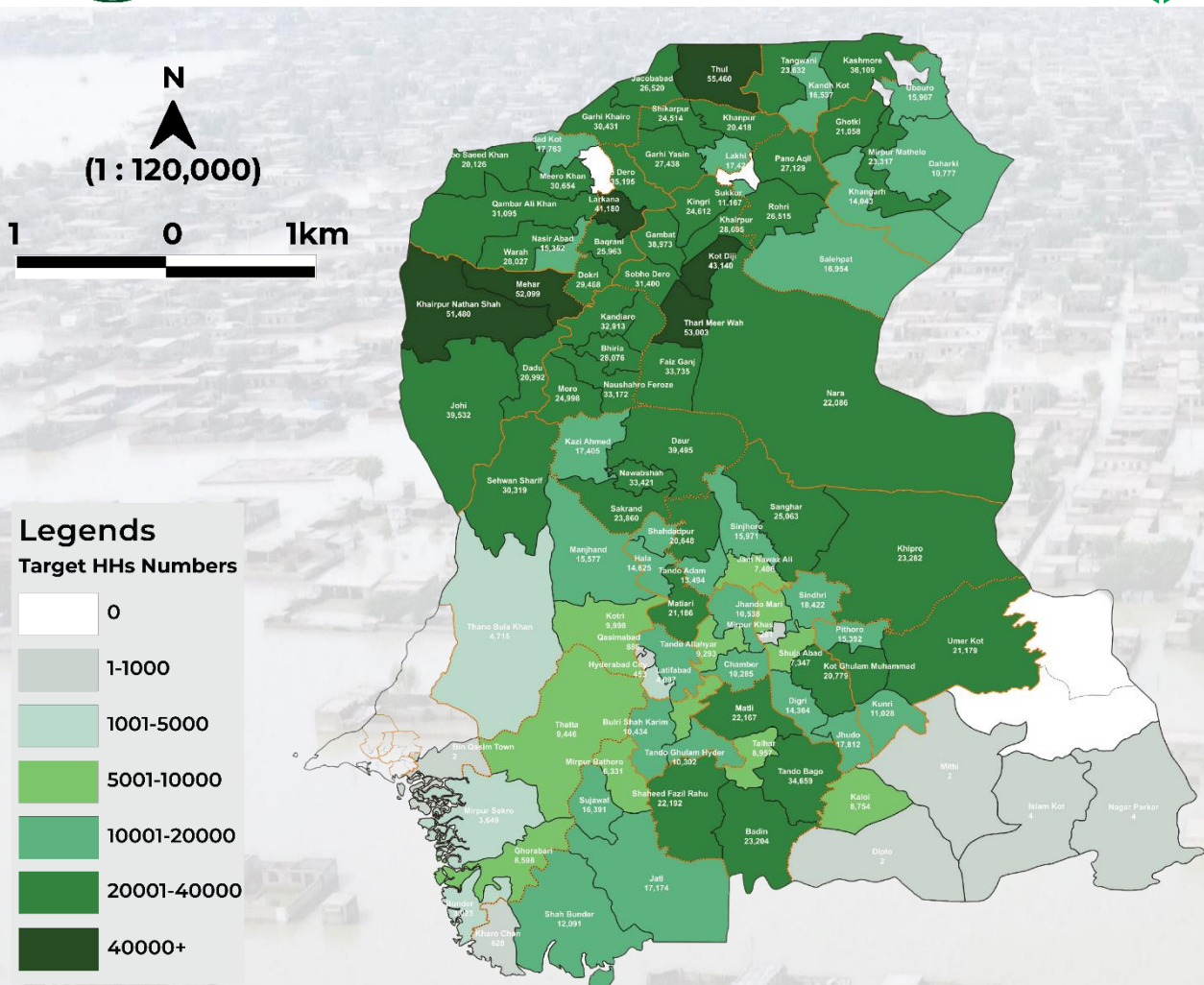


Sindh Housing Recovery and Reconstruction Platform

SAFE, DIGNIFIED HOMES AND COMMUNITIES

Strategic Change Platform 2: Strand (Settlements Approach)

23/10/2025, Minar Thapa Magar, CRS Pakistan/SHRRP



Floods in 2022 in Sindh Pakistan



27/30
Districts affected



50,000
Settlement affected



2.1 million
homes damaged



12.36 million
People affected



\$8 billion
Funding Required

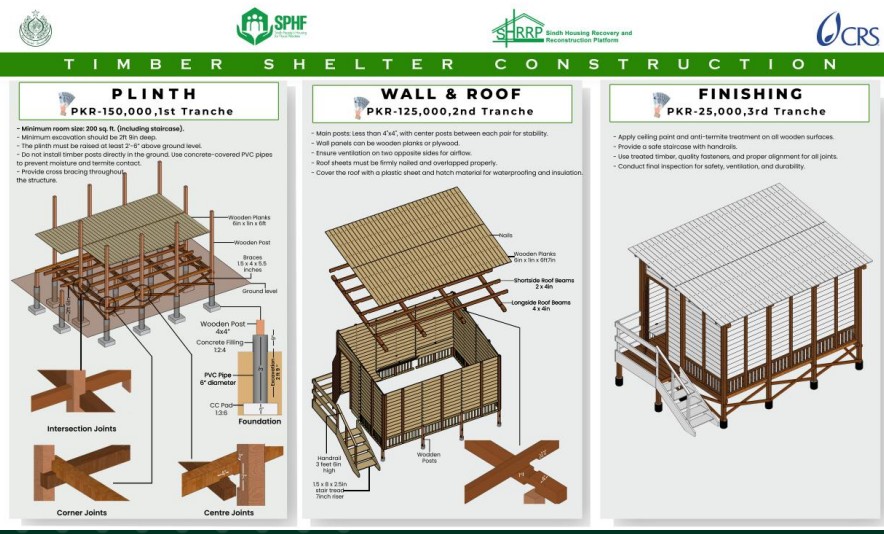
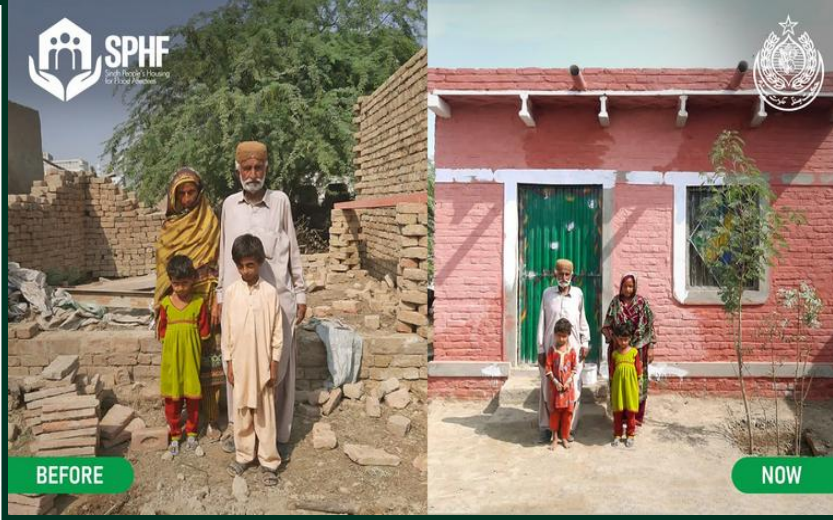
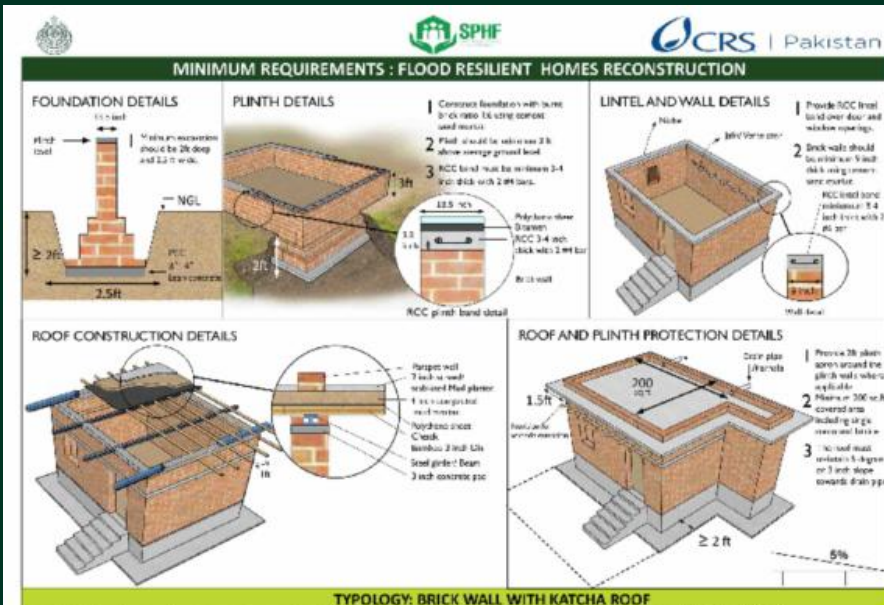


\$6 Billion
Funding Gap

Platform Contributors



2.1 MILLION FLOOD RESILIENT HOUSES BEING RECONSTRUCTED





Funded by
the European Union

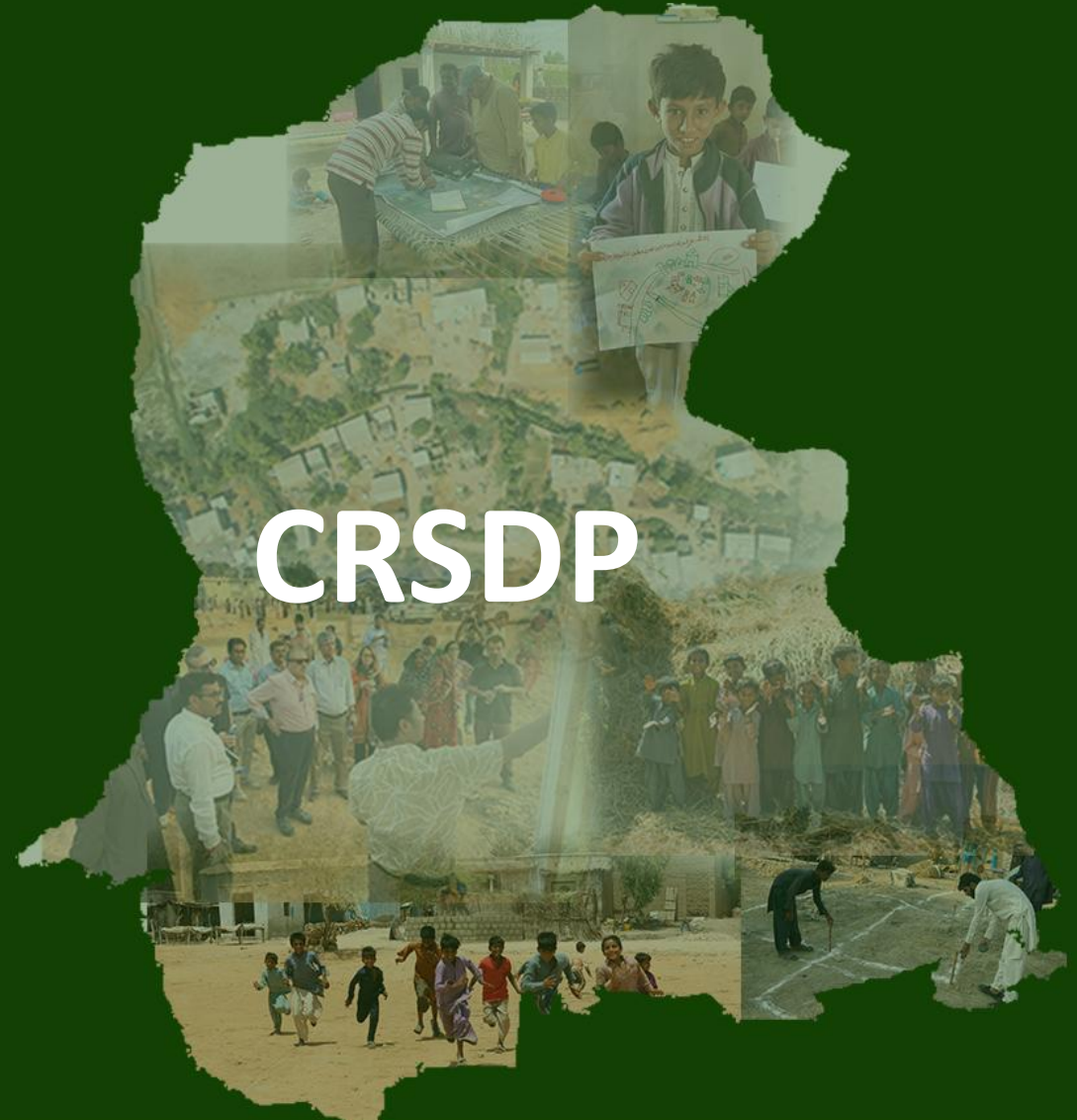


UNITED NATIONS
INDUSTRIAL DEVELOPMENT ORGANIZATION



CLIMATE RESILIENT SETTLEMENT DEVELOPMENT PLAN IN SINDH

Addressing Climate Challenges With Resilient
Homes & Sustainable Communities.





CRSDP OBJECTIVES

01

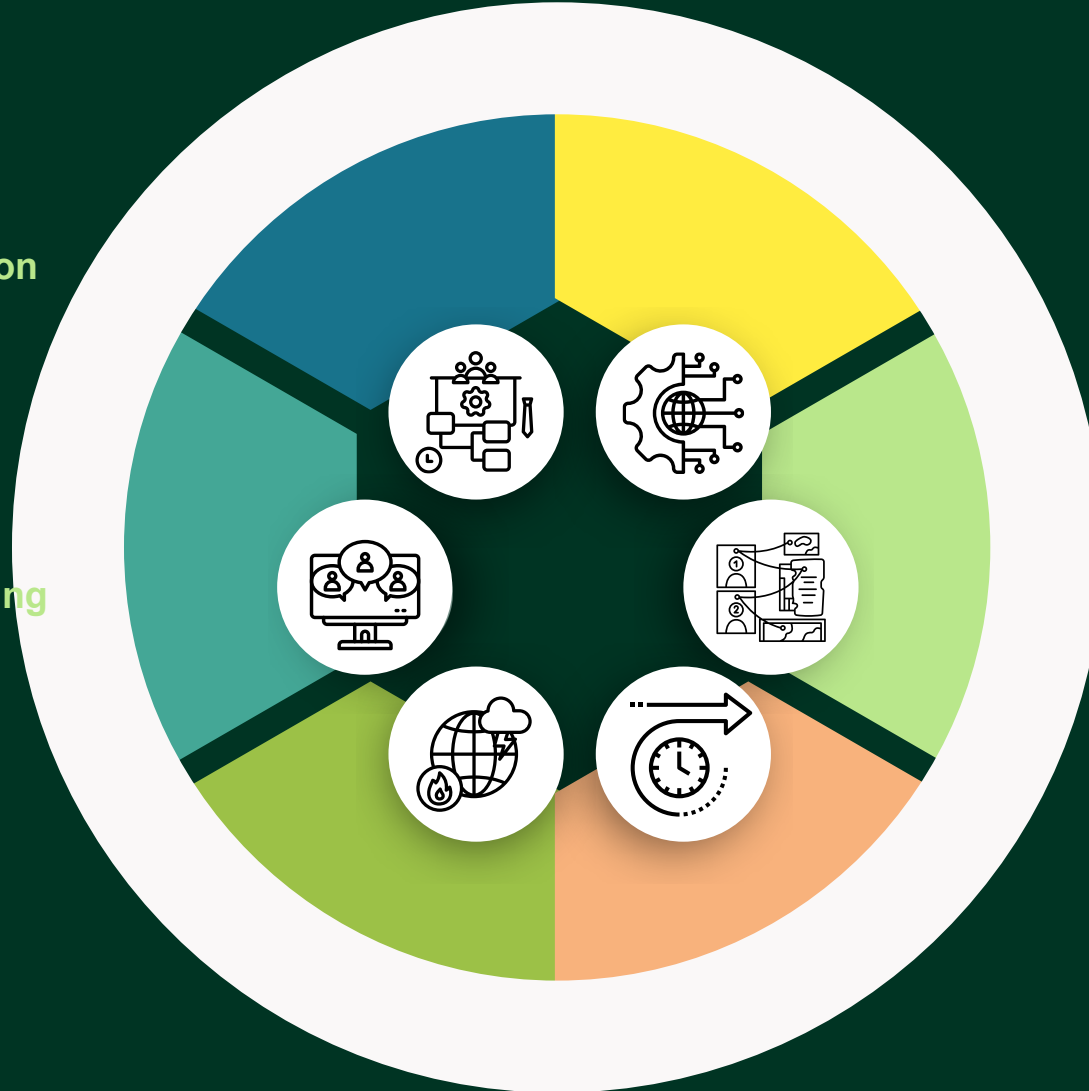
Multi-Sectoral Integration & Visualization

02

Technology-Informed Community-Led Planning

03

Climate Adaptation & Mitigation in Recovery



04

Transparency Through Digitization

05

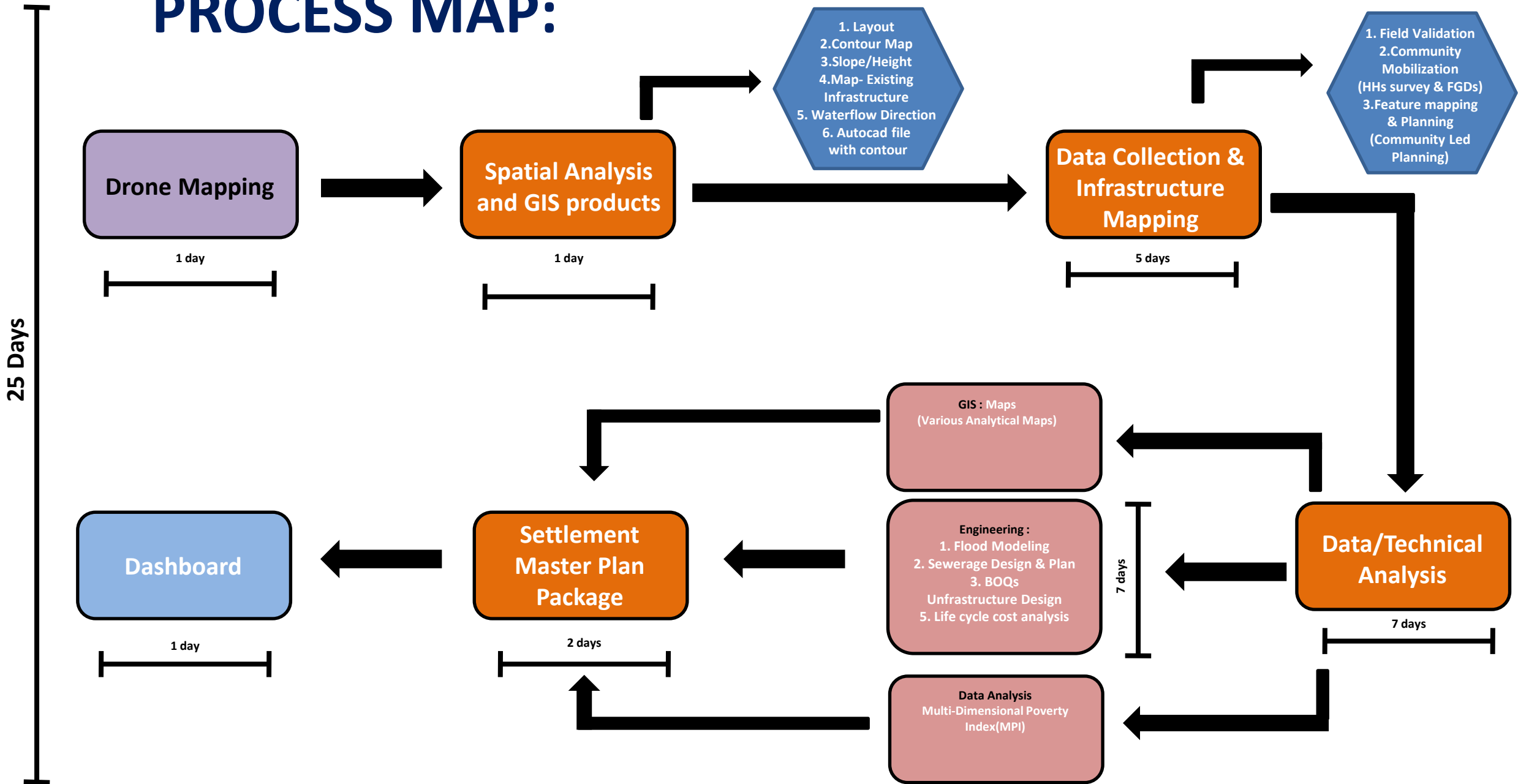
Evidence-Based Decision Making

06

Base For Long-Term Development

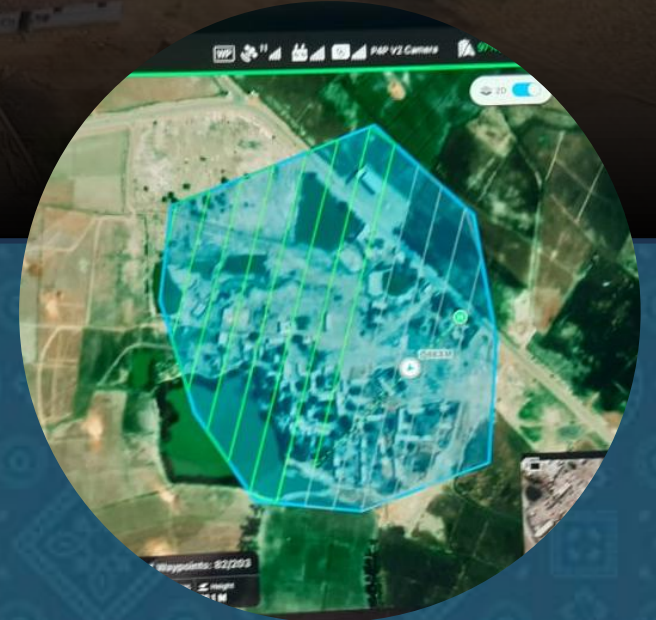


PROCESS MAP:



Step 1

Drone Mapping



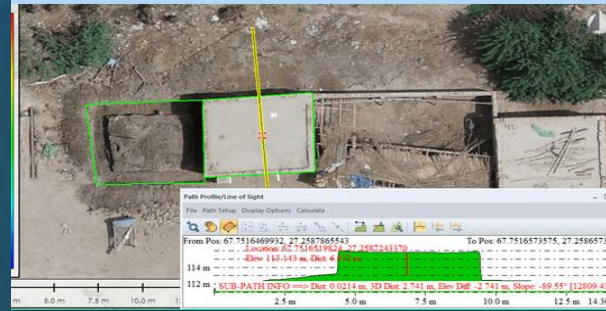
Step 2: Spatial Analysis and GIS products

Outputs of the Drone Survey

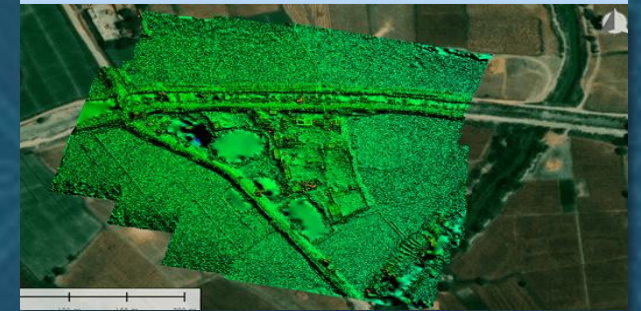
Area Measurement



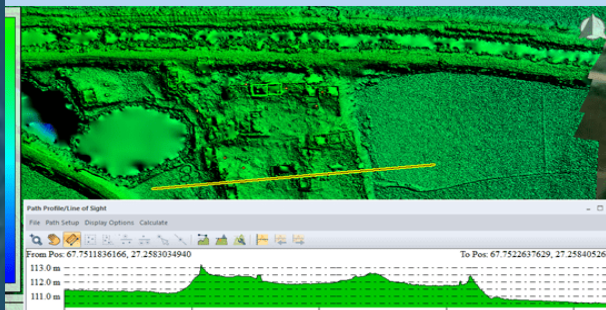
Height of House



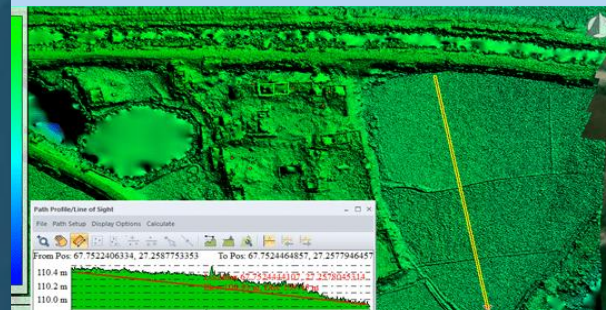
Settlement Topography



Settlement Height Analysis



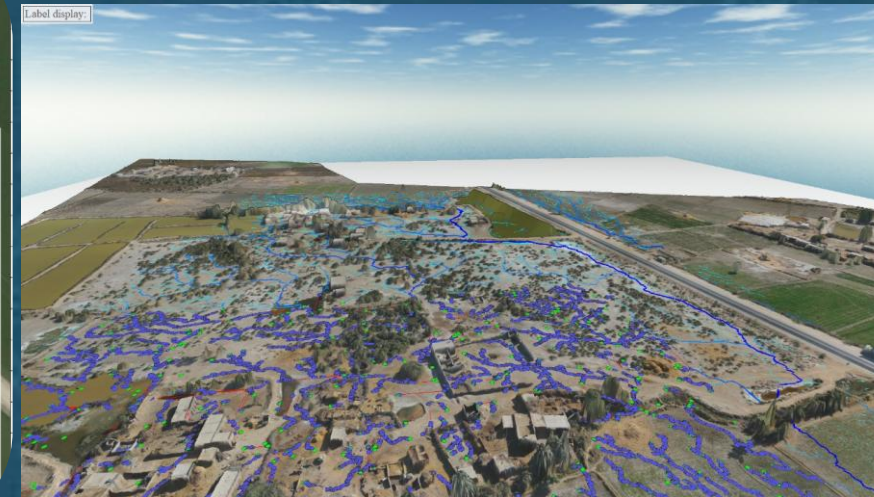
Slope Analysis



Flood Water Modelling



Step 2: Spatial Analysis & GIS products



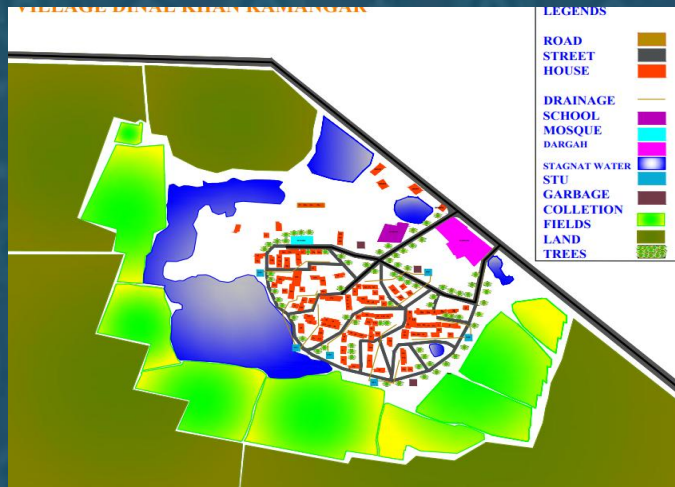
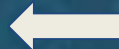
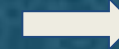
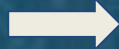
CONTOUR ANALYSIS

| Sr | Patch | Avg. Height (m) | Road Benchmark Height | Height Variance (m) | (+ Cut) / (- Fill) (m3) | Remarks |
|----|-------|-----------------|-----------------------|---------------------|---------------------------|----------------|
| 29 | DK29 | 144.2 | 146.4 | -2.2 | -2.2 | Road |
| 53 | DK53 | 143.475 | 146.4 | -2.925 | -2.925 | Stagnant Water |

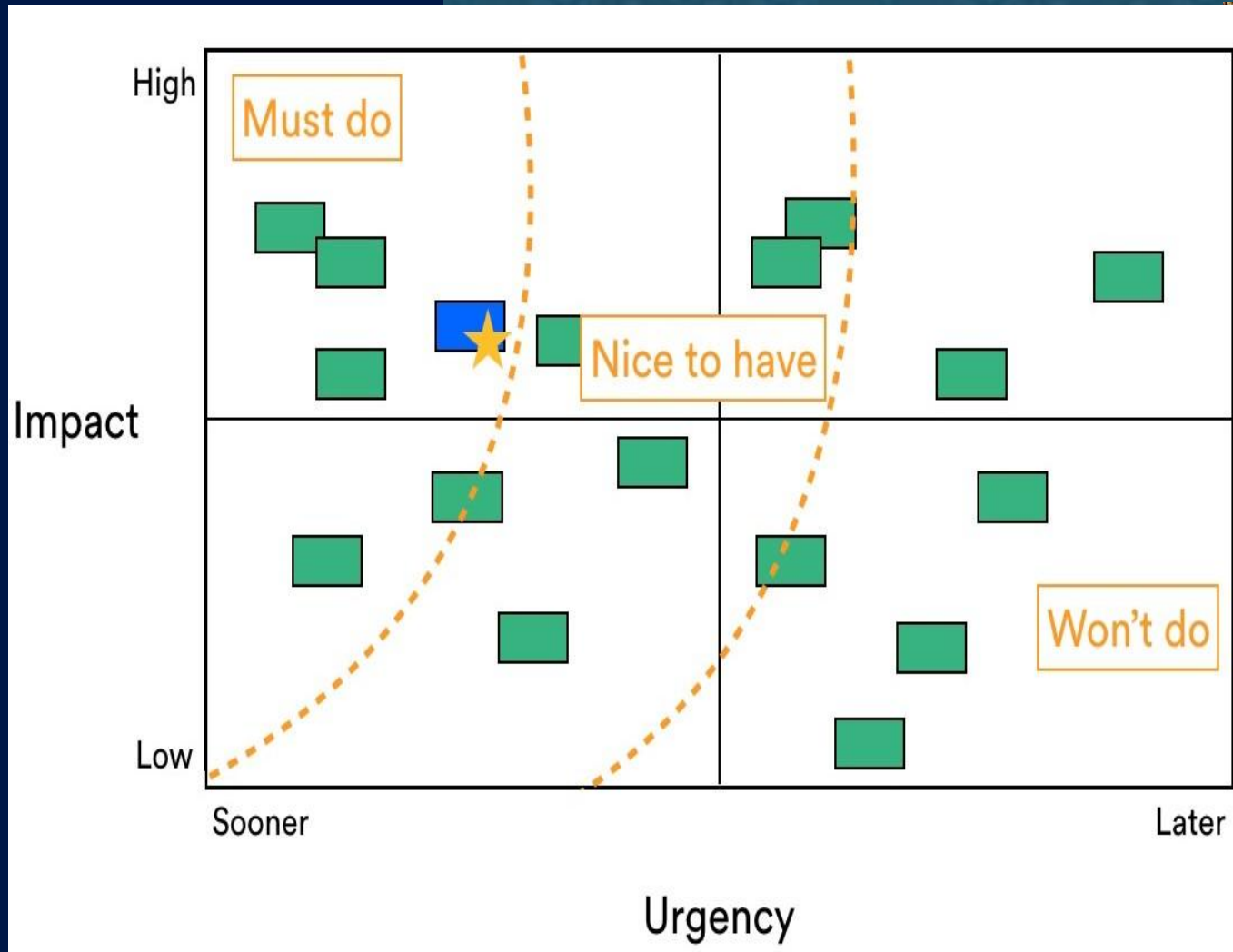
Step 3: Data Collection using various tools

| Tool | Type | Description | Target Audience | Methodology | Data Credibility Measures |
|---|------------------------------|--|--|---|--|
| Focus Group Discussions (FGDs) | Qualitative | Group discussions to gather diverse perspectives and experiences. | Community members including men, women, youth, elderly from various socio-economic backgrounds. | Conducted in each village with 6-12 participants. Guided by a trained facilitator with a pre-developed discussion guide. Discussions and transcription. | Standardized discussion guide, trained facilitators, cross-checking themes and insights with other data sources. |
| Household Surveys | Quantitative | Structured interviews to collect quantitative data on living conditions and needs. | Household heads or knowledgeable members from each household. | Application-based software (e.g., Kobo Collect) used for structured interviews. Complete enumeration of households in each village. | Blanket Coverage, pre-tested questionnaire, training in survey techniques, use of electronic devices to minimize errors, statistical analysis, verification through field visits and spot checks by supervisors. |
| Key Informant Interviews (KIIs) | Qualitative | In-depth interviews to gather detailed insights from key stakeholders. | Selected government officials from District Administration, Revenue Department and other community stakeholders. | Standardized interview guide used. Conducted by trained interviewers. Transcribed for analysis. | Selection of knowledgeable informants, standardized guide, triangulation with other data sources. |
| WASH and Other Infrastructure Assessments (School, Health etc.) | Quantitative and Qualitative | Evaluations of water, sanitation, hygiene, and other infrastructure facilities. | Users and managers of water and sanitation facilities, schools, health facilities, and communal schemes. | Comprehensive checklists used by field engineers and data collectors. Inspections, measurements, and documentation (photos and notes). | Standardized checklists, pre-testing of tools, training on measurement techniques, verification through field visits and spot checks by supervisors. |

Step 4: Community mobilization in mapping existing infrastructure and future planning



Step 5: Need Prioritization



Step-6 : HHs level socio-economic database managed (Kobo-Excel)

Household Assessment

- Group **Demographics**
- Group **Personal Information**
- Group **Household Organization:**
- Group **Adult Age Groups & Education**
- Group **Minor Age Groups & Education**
- Group **Disability**
- Group **Livelihoods**
- Group **Shelter**
- Group **Energy & Assets**



| Unique ID | District Name | Taluka | Union Council |
|------------------|---------------|--------|---------------|
| ThThCCCCRLBB2001 | Thatta | Thatta | Chatto Chand |

| Category | Label | Feature Code | Color Code |
|----------------------------------|-------|--------------|------------|
| Private House - SPHF Beneficiary | 001 | B2 | |

| Name of Owner | Gender | CNIC | UU ID |
|---------------|--------|-----------------|--------|
| Jannat | Female | 41409-8901893-0 | 274509 |

| No Education | Primary | Matric | Inter | Graduate |
|--------------|---------|--------|-------|----------|
| 1 | 0 | 0 | 0 | 0 |

| Avg Household Income | Income Base | No. of Earner | Occupation |
|----------------------|------------------|---------------|------------------|
| 15,000 | Unskilled Labour | 1 | Unskilled Labour |

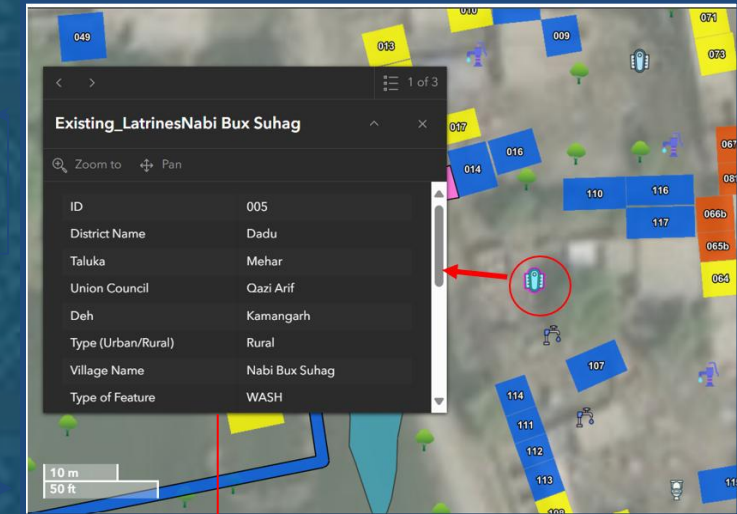
| Major Problems of the Household | | | | |
|---|--|--|--|--|
| Access to Clean Water Proper sanitation facilities Poor Hygiene | | | | |

| Type of Hand Pump | Water Table | Year of Installation | Status of Hand Pump | Quality of Water |
|-------------------|-------------|----------------------|---------------------|------------------|
| NA | NA | NA | NA | NA |

Step-7: Infrastructure database: Linked with house or unique infrastructure number

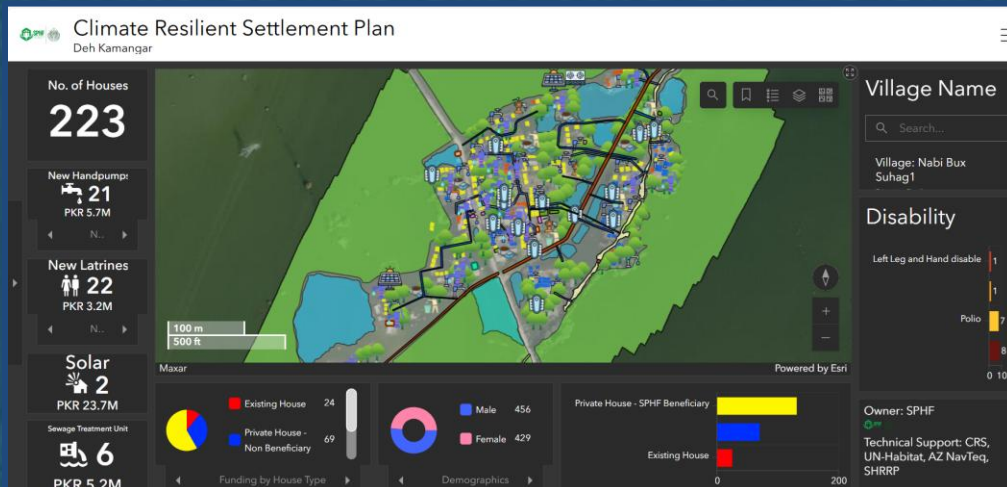
| S.No | Unique ID | District Name | Taluka | Union Council | Deh | Type (Urban/Rural) | Village Name | Mapping Status | Type of Feature |
|------|------------------|---------------|--------|---------------|-----------|--------------------|----------------|----------------|-----------------|
| 005 | DaMeQAKaRNBW5005 | Dadu | Mehar | Qazi Arif | Kamangarh | Rural | Nabi Bux Suhag | Completed | WASH |

| Sub-Type | Feature Code | Color Code | Status | Flood Risk | Area / Size / No's | Height from NSL | Estimated Cost (PKR) | Donor | Users (Households)-Applicable only for | User Details |
|-------------------|--------------|------------|------------------------|------------|--------------------|-----------------|----------------------|-------|--|-------------------------|
| Existing Latrines | W5 | | Repair/ Rehabilitation | Medium | 6' x 4' | | 74352 | | 5 | 014, 016, 110, 114, 107 |

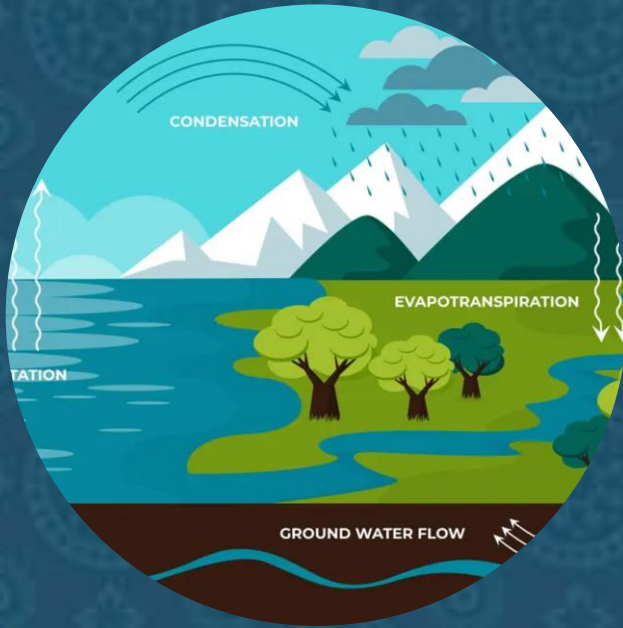


| | |
|----------------------|------------------------|
| Sub-Type | Existing Latrines |
| Status | Repair/ Rehabilitation |
| Flood Risk | Medium |
| Area / Size / No's | |
| Height from NSL | |
| Estimated Cost (PKR) | 74,351.76 |
| Donor | |

| | |
|--|-------------------------|
| Users (Households)-Applicable only for communal Infrastructures- | 5 |
| User Details | 014, 016, 110, 114, 107 |



Step 8: Technical Analysis



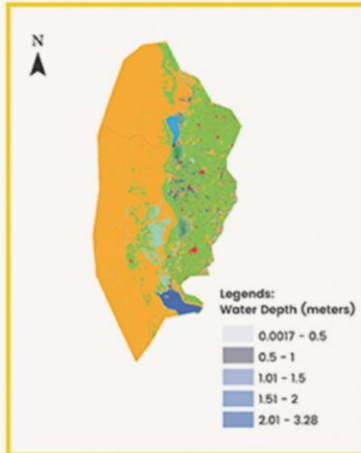
Geo-Hydrology
Analysis



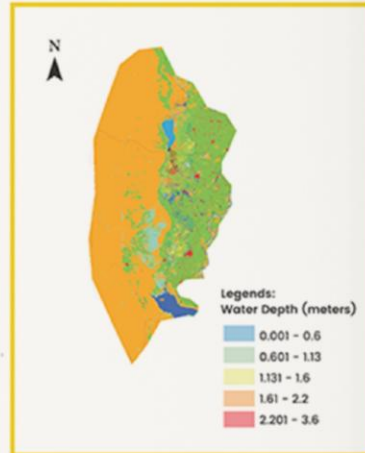
Design, Cost Estimation and
Master Plan

Step 8.1: Hydrology Analysis and Hazard Modelling (River

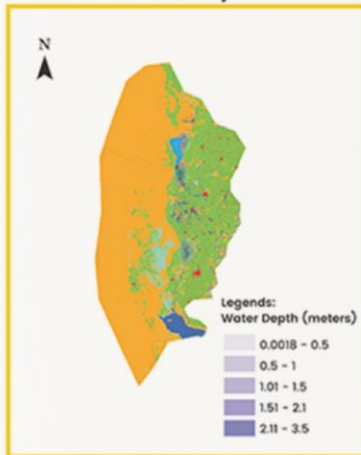
Depth of water with 400mm rain in 1 day



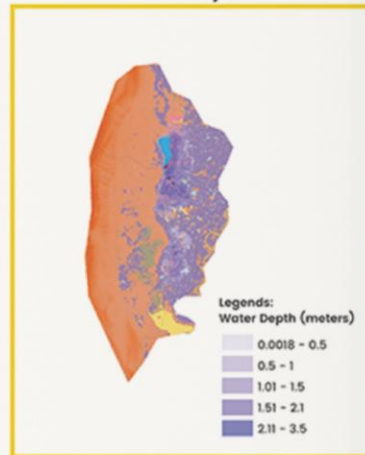
Depth of water with 400mm rain in 5 days



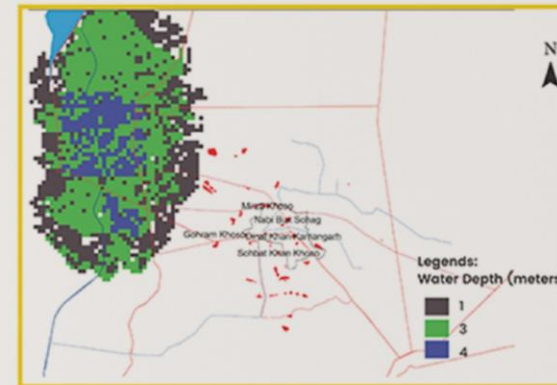
Depth of water with 500mm rain in 1 day



Depth of water with 500mm rain in 5 days

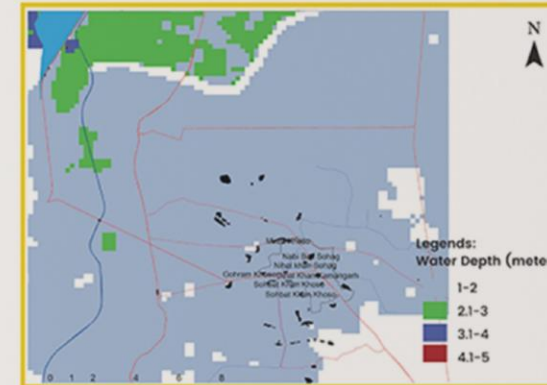


Deh Kamangar Inundation Status For 2010 Flooding

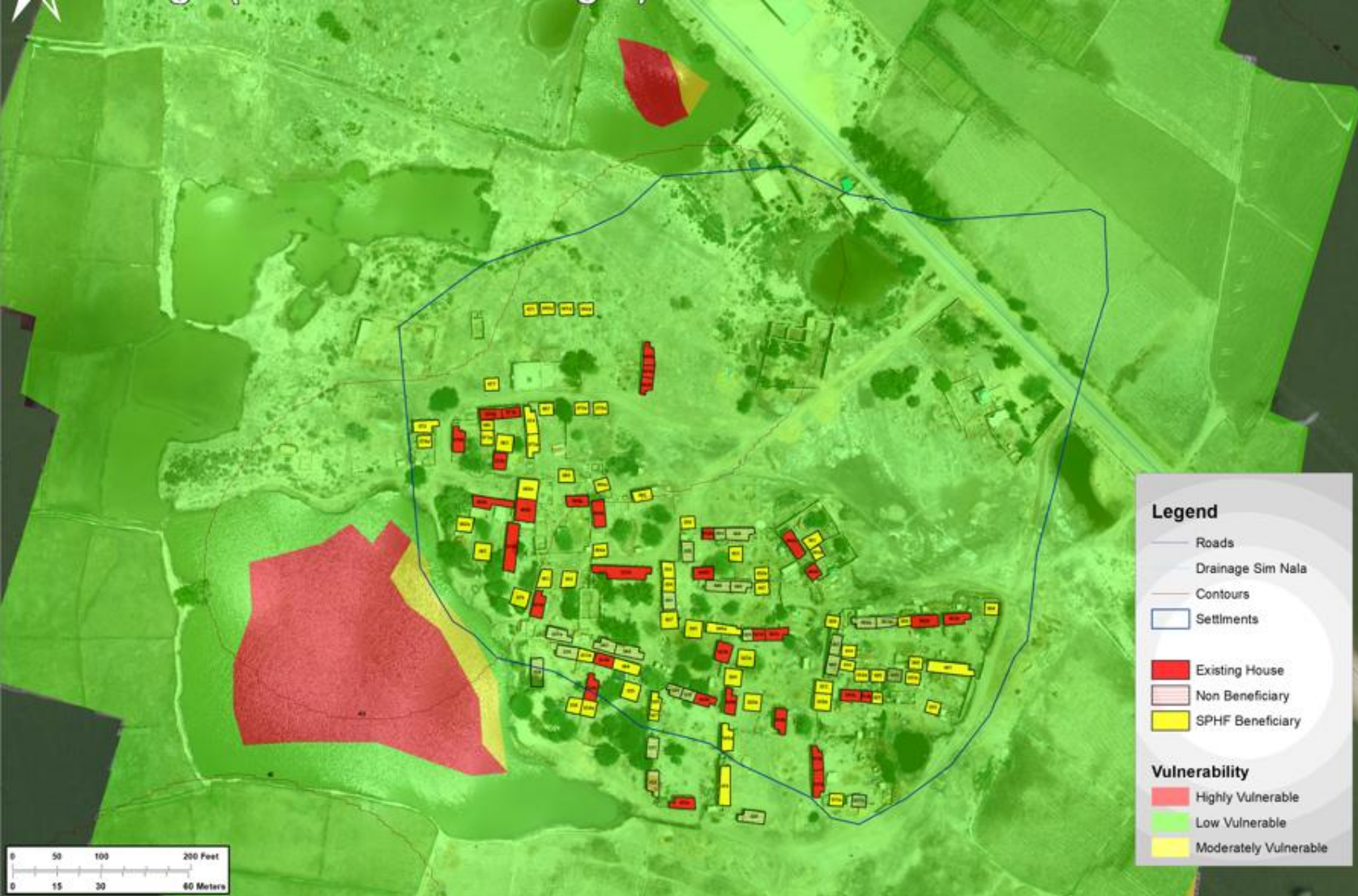


DRRM & Climate

Flood Inundation Extent



Assess flood risk using SCS curve number algorithm with simulated rainfall (400mm, 500mm) over different durations to understand potential inundation scenarios.



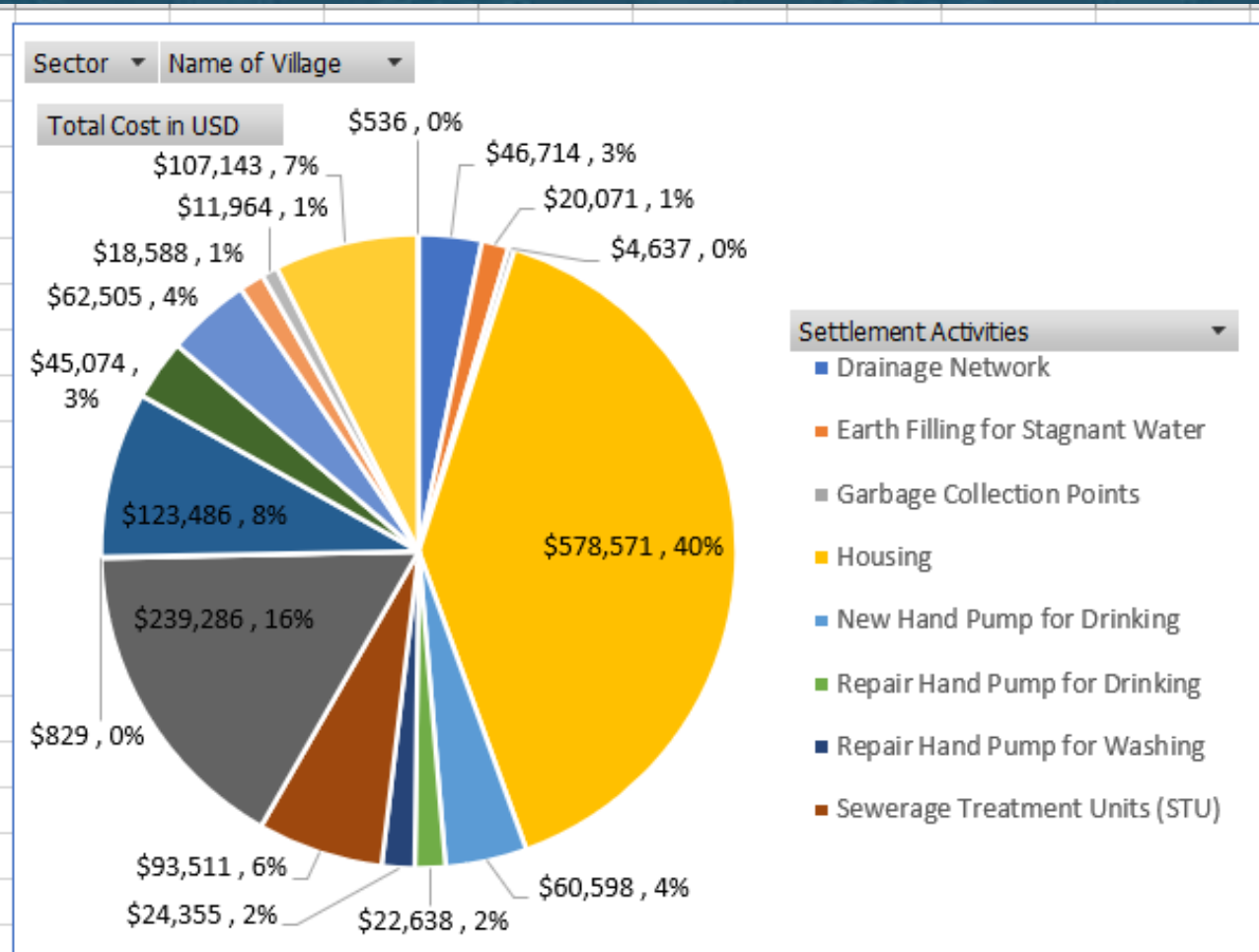
Vulnerability Map
e (Gohram Khoso)

Step 8.2: Vulnerability Mapping

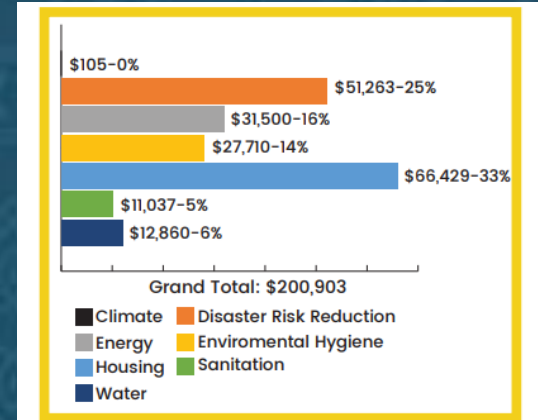
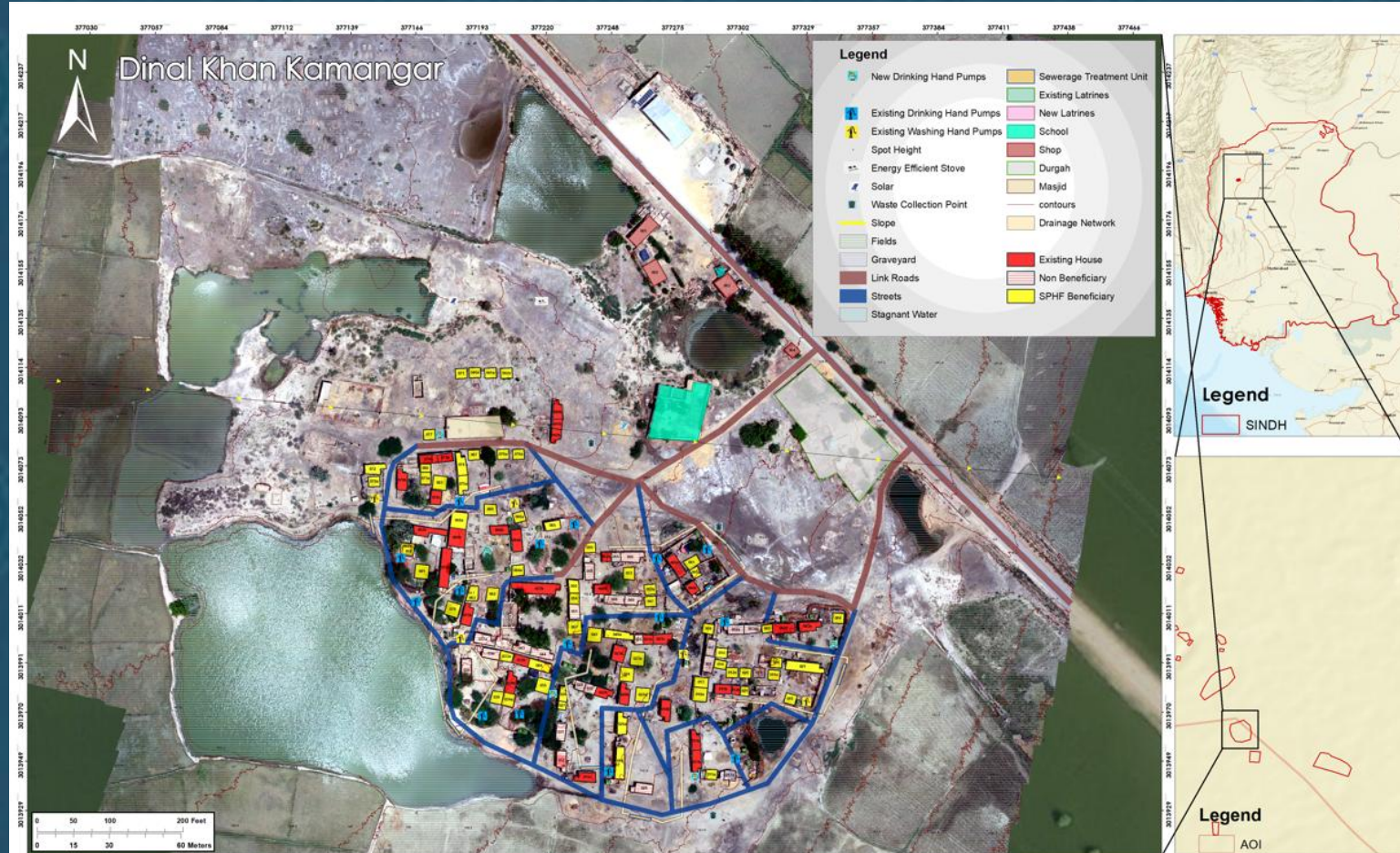
Step 8.3: Technical Bill of Quantities (BOQ), & estimations

Total activity wise budget estimation

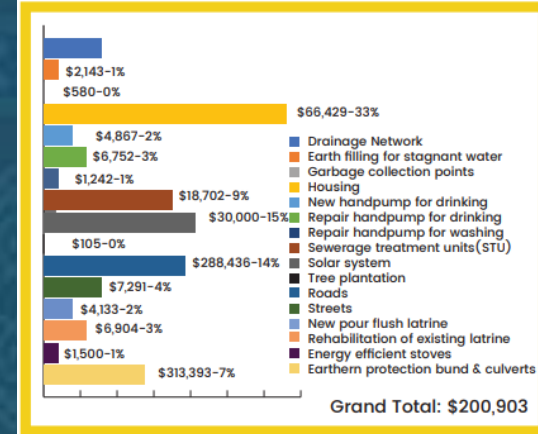
| Sector | (All) |
|------------------------------------|---------------------|
| Name of Village | (All) |
| Row Labels | Total Cost in USD |
| Drainage Network | \$ 46,714 |
| Earth Filling for Stagnant Water | \$ 20,071 |
| Garbage Collection Points | \$ 4,637 |
| Housing | \$ 578,571 |
| New Hand Pump for Drinking | \$ 60,598 |
| Repair Hand Pump for Drinking | \$ 22,638 |
| Repair Hand Pump for Washing | \$ 24,355 |
| Sewerage Treatment Units (STU) | \$ 93,511 |
| Solar System | \$ 239,286 |
| Tree Plantation | \$ 829 |
| Road | \$ 123,486 |
| Streets | \$ 45,074 |
| New Pour Flush Latrine | \$ 62,505 |
| Rehabilitation of Existing Latrine | \$ 18,588 |
| Energy Efficient Stoves | \$ 11,964 |
| Earthen Protection Bund & Culverts | \$ 107,143 |
| Rehabilitation of RO Plant | \$ 536 |
| Grand Total | \$ 1,460,506 |



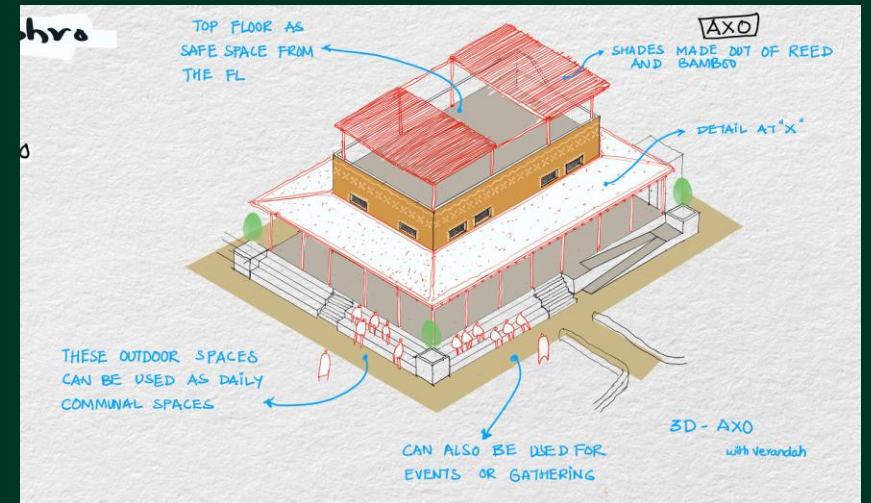
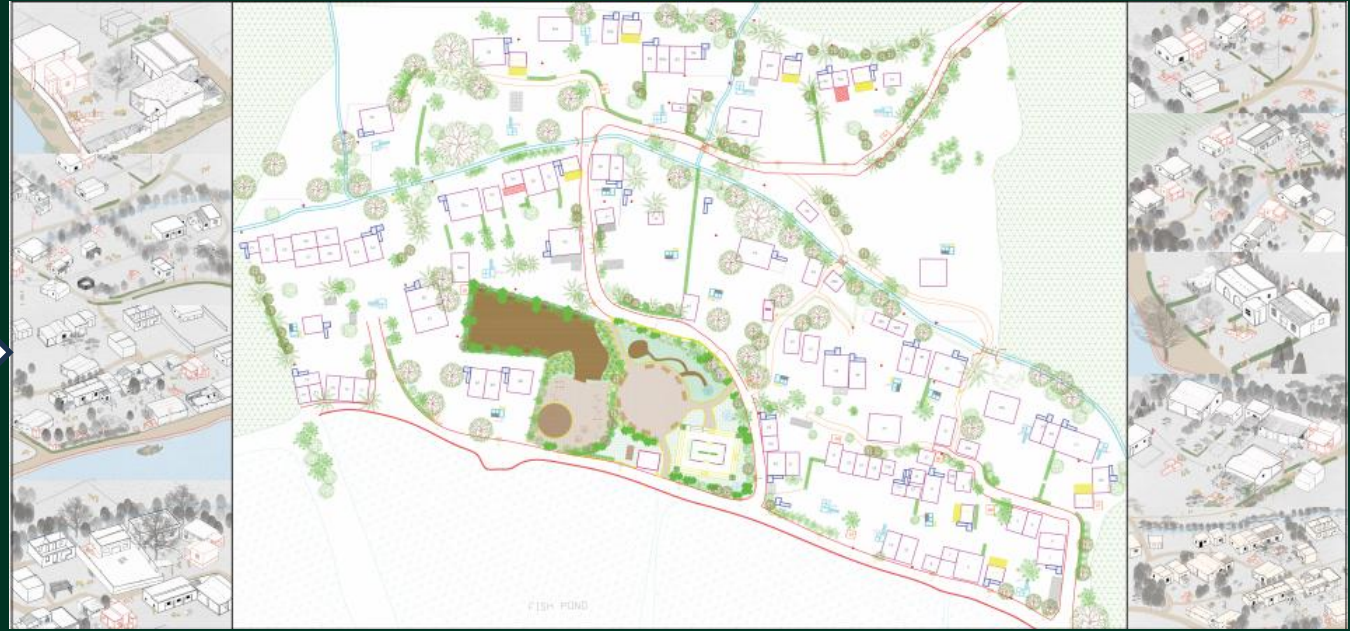
Step 8.4 : Settlement Development Map & Budgeting



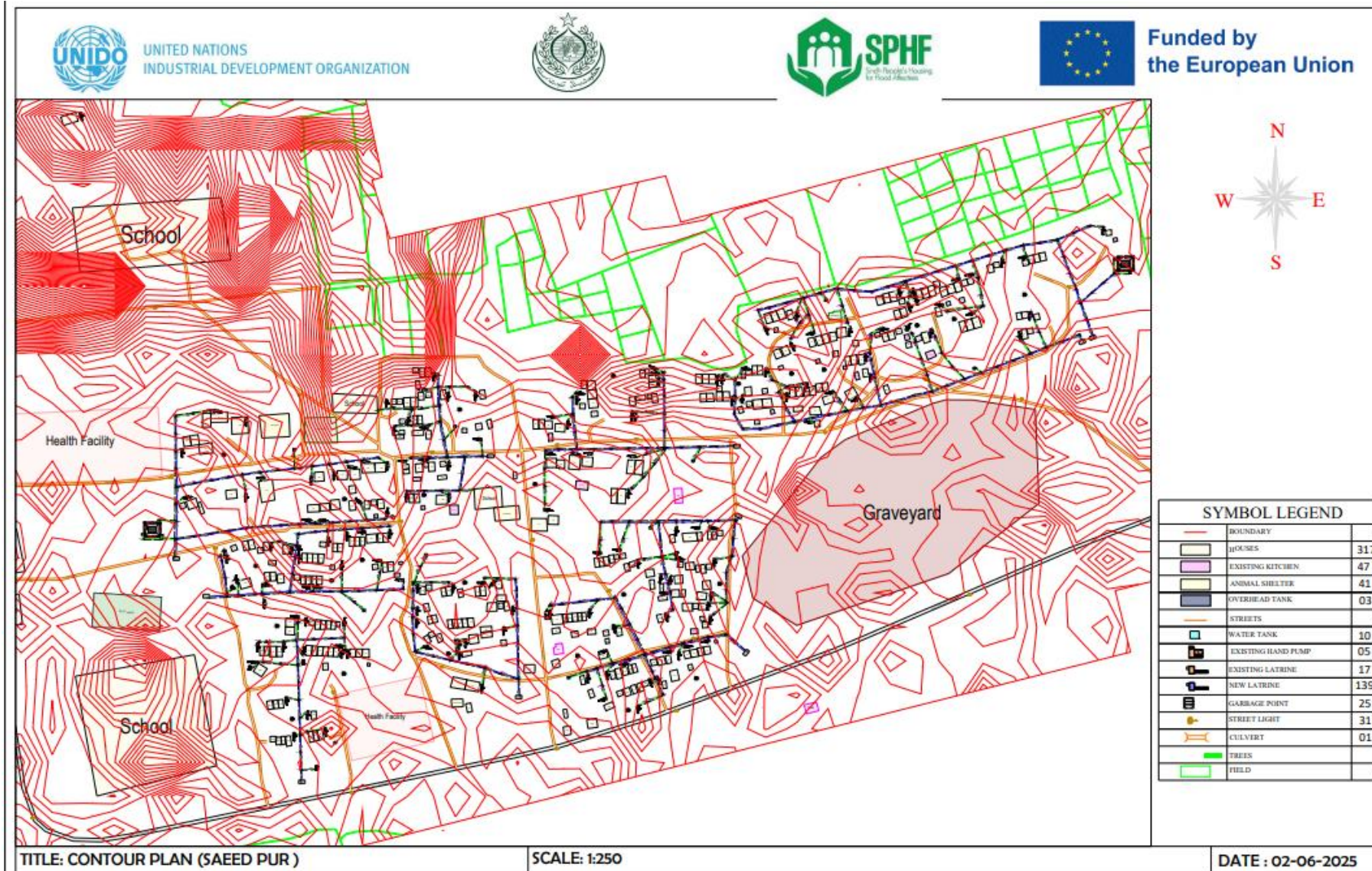
Total Estimated Detailed Activity Budget in US Dollars



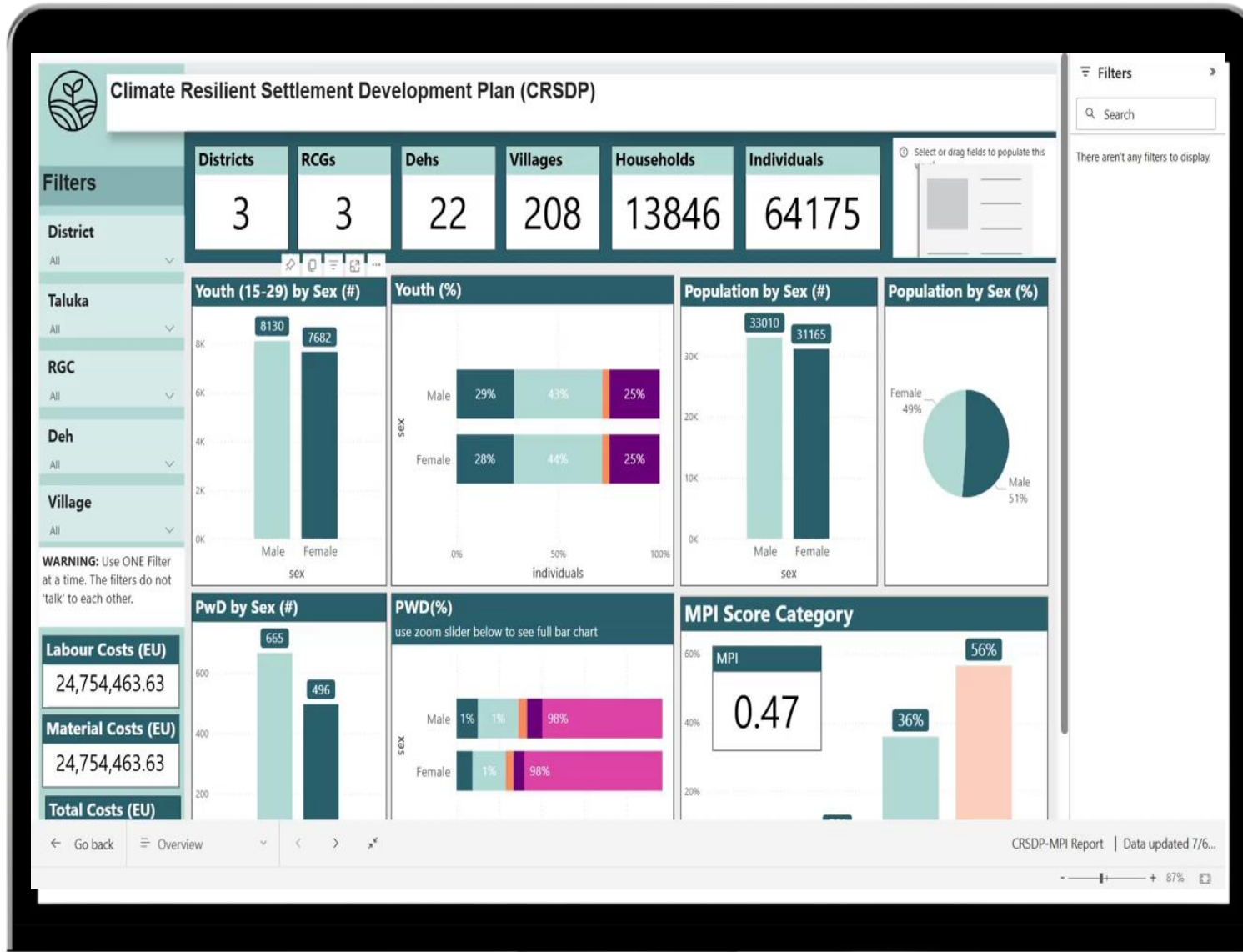
Step 8.5: Complete Master Plan Package (2D drawing with Climate Resilient Designs and Mitigation Activities)



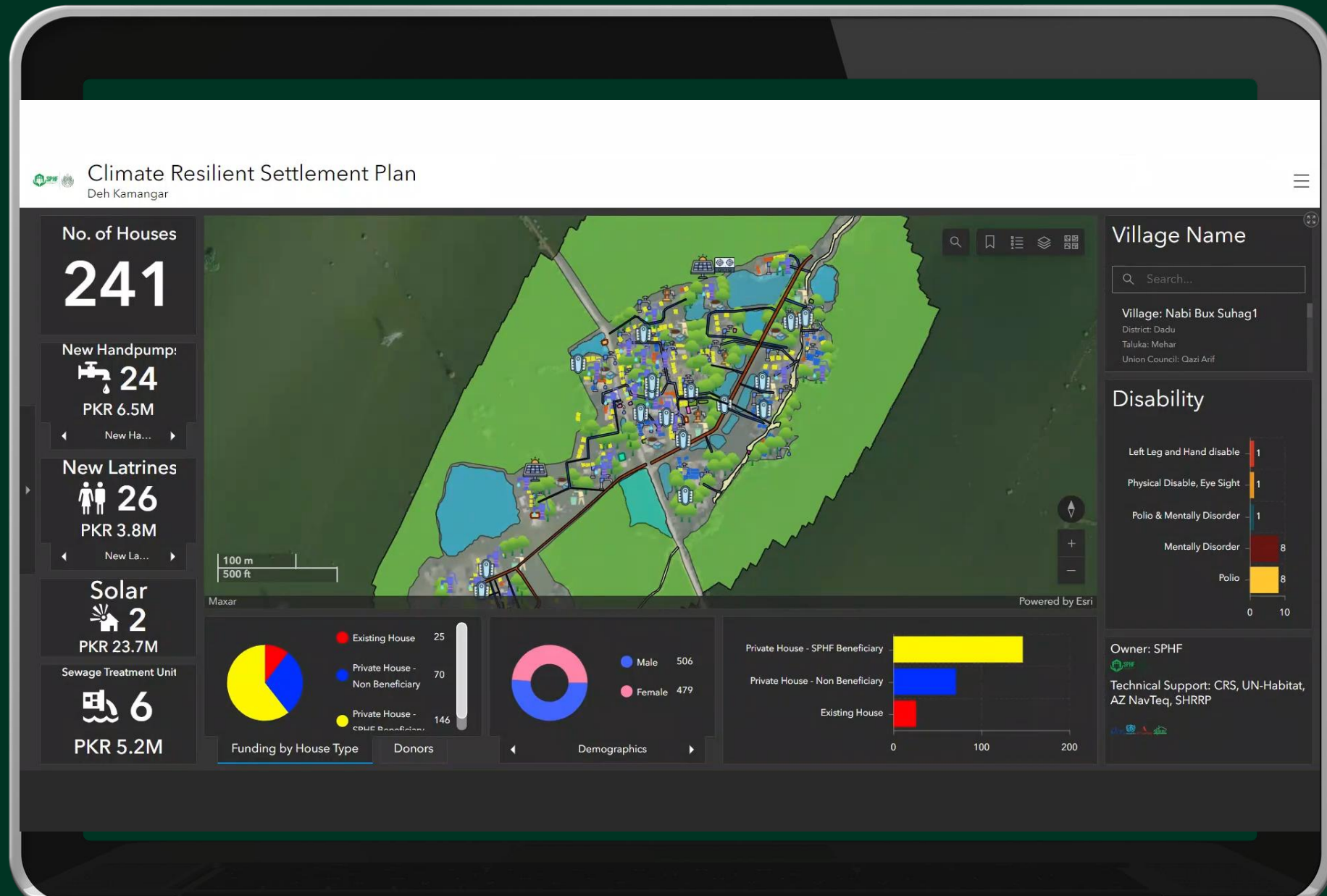
Complete sewerage and road network plan and design



Step 9 : Multi-Dimensional Poverty Index (MPI) Dashboard





Step 10: GIS Based interactive Dashboard





Step 11: Integrated System for Planning, Implementation, Monitoring and Reporting For Government and Stakeholders (All process combined in one system)




1:02





Sindh Climate Resilient Settlement Development Plan (CRSDP)



Supported by 

Designed & Developed by 

Settlement Layout Plan of Selected Districts - Thatta, Sujawal, Badin

Total Cost
731.4 M PKR

Total Cost

Climate & Energy
Energy Efficient Stove
1.5k
PKR 36.8M

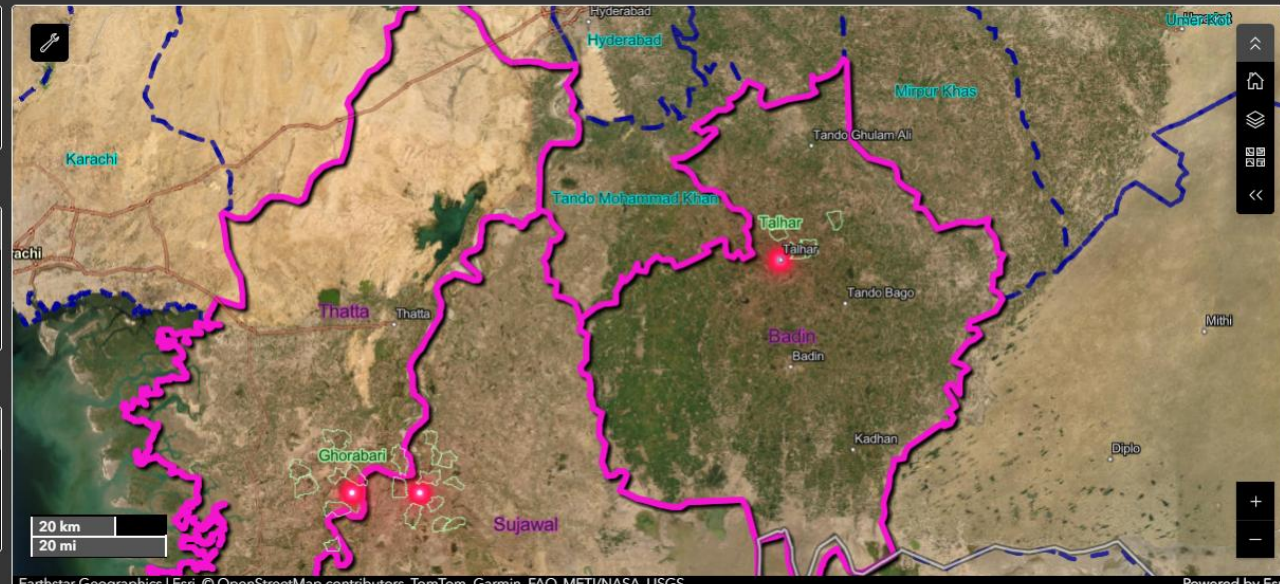
Energy Efficient Stove

Disaster Recovery & Rehabilitation
Roads
4.8km
PKR 23.4M

Roads

WASH
Existing Handpump Drinking
56
PKR 7M

Existing Handpump Drinking



Earthstar Geographics | Esri, © OpenStreetMap contributors, TomTom, Garmin, FAO, METI/NASA, USGS


Powered by Esri

| Districts | Taluka |
|-----------|---------|
| 3 | 5 |
| Deh | Village |
| 23 | 209 |

Village Names

- Haji Chutto Khaskheli - MPI 0.55
Doulat PurDoulat Pur, Ghorabari, Thatta
- Haji Urs Sodhai - MPI 0.59
Doulat PurDoulat Pur, Ghorabari, Thatta
- Haji Shafi Muhammad Jalbani - MPI 0.52
Doulat PurDoulat Pur, Ghorabari, Thatta
- Abdullah Aamro - MPI 0.47
Hayat GahoHayat Gaho, Ghorabari, Thatta
- Saleh Babro - MPI 0.57

Village Name

 **Funded by the European Union**

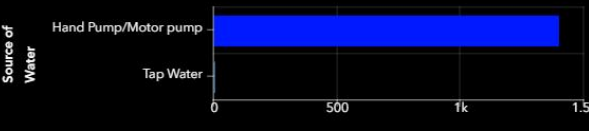
Implemented By

Funded & Implemented By

Population
6.4k
Avg HH Size: 4.6

Population

Source of Water



Source of Water


Economy of Scale

Pilot:
 9 Settlements (800 HHs)
Cost: \$50/HHs




5 Districts
 298 Settlements (50,000 HHs)
Cost: \$11/HHs

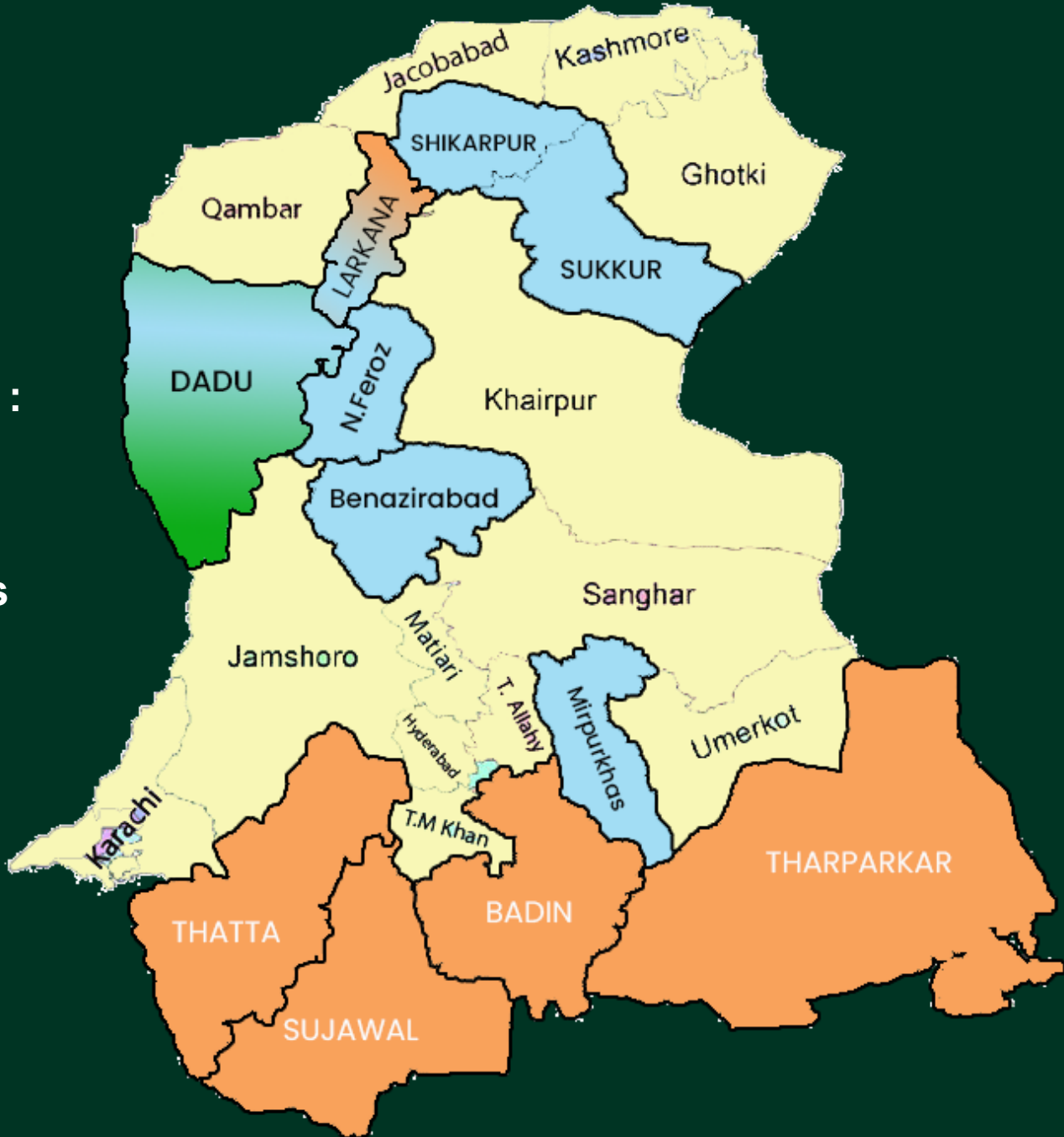
Funded by the European Union



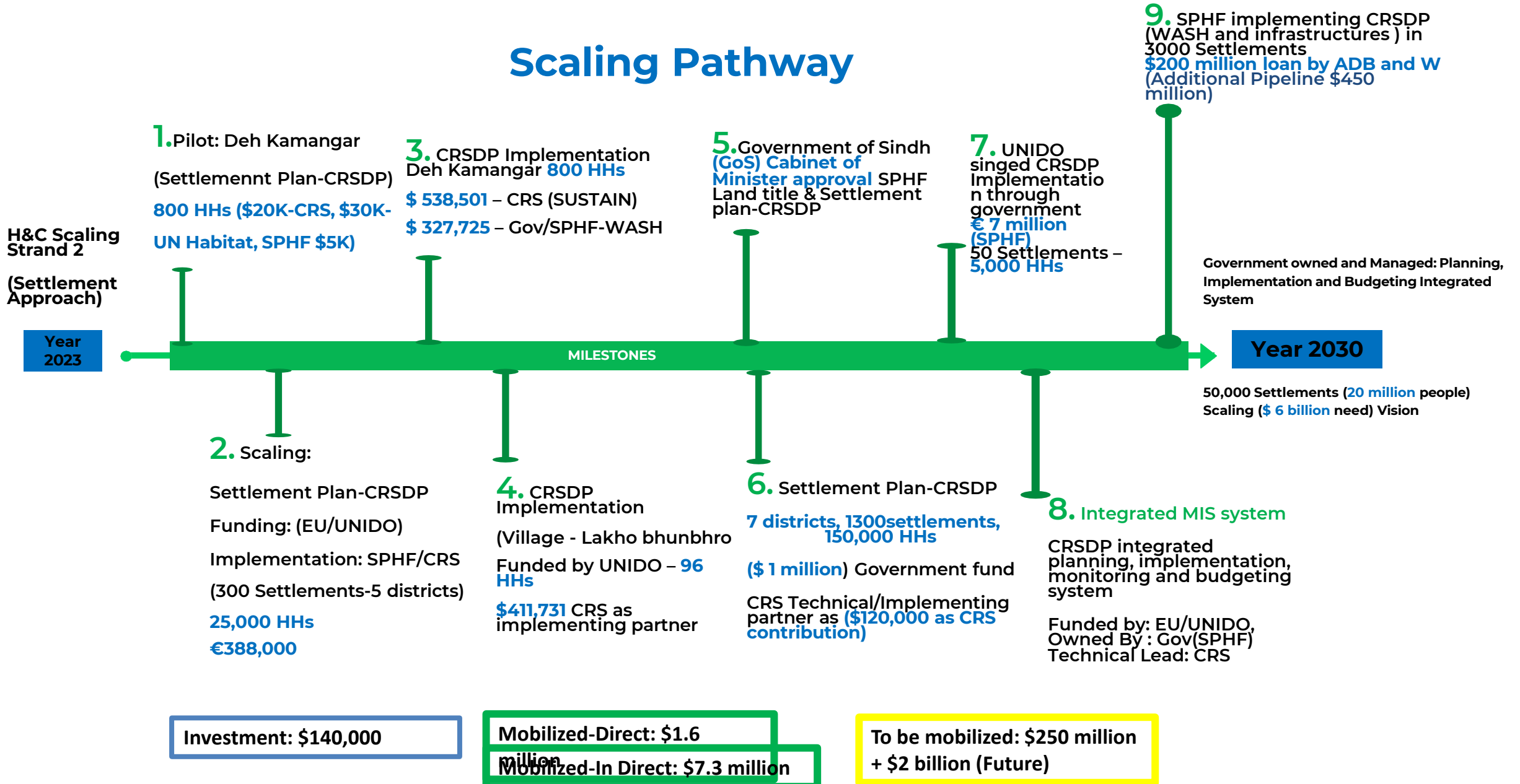
7 Districts
 1500 Settlements (150,000 HHs)
Cost: \$6.14/HHs



Total Target :
50,000
 Settlements
 in Sindh



Scaling Pathway



Multi-Dimensional Advantages



Area based coordination - Multi Partner/Sector Collaboration

CRSDP/master plan and data
available for all actors working in
same settlements.



Transparency at district level

Tool for government annual
planning/budgeting and for
approving NGOs intervention.



Integrates recovery

development, response
and preparedness.

Will facilitate
DRR; additional
layering is possible



Anticipatory Action, Localized
Early Warning Systems, Disaster
Risk Financing etc.



Remote damage and loss assessment in future

with all footprints, social
economic data and
community's contact.



Resource Mobilization
Health, Education,
Livelihoods, Clean Energy
and other sectoral
baseline and integration.



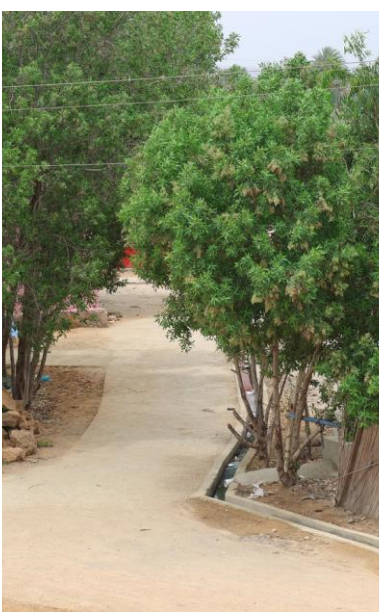
Resource Mobilization

at both local and macro
level



One stop shop

(Big shopping center for various
stakeholders), value for money
and avoid replication of response
in same location







Minar Thapa Magar, minar@shrrp.org minar.Thapamagar@crs.org

Innovation Data Fund

Coordimap_ From Crisis to Solutions:

Coordinated Shelter & Settlement Responses

SHELTER CLUSTER EL SALVADOR



Context:



For decades, El Salvador has experienced forced displacement, due to armed conflict and later driven by gang violence. Two years ago, the government implemented a security model under a **State of Exception**, which has reduced violence and displacement.



With the recent shift in the humanitarian context, new **opportunities have emerged to pursue long-term solutions** for forcibly displaced populations. The increased humanitarian access highlighted shelter and settlement needs.



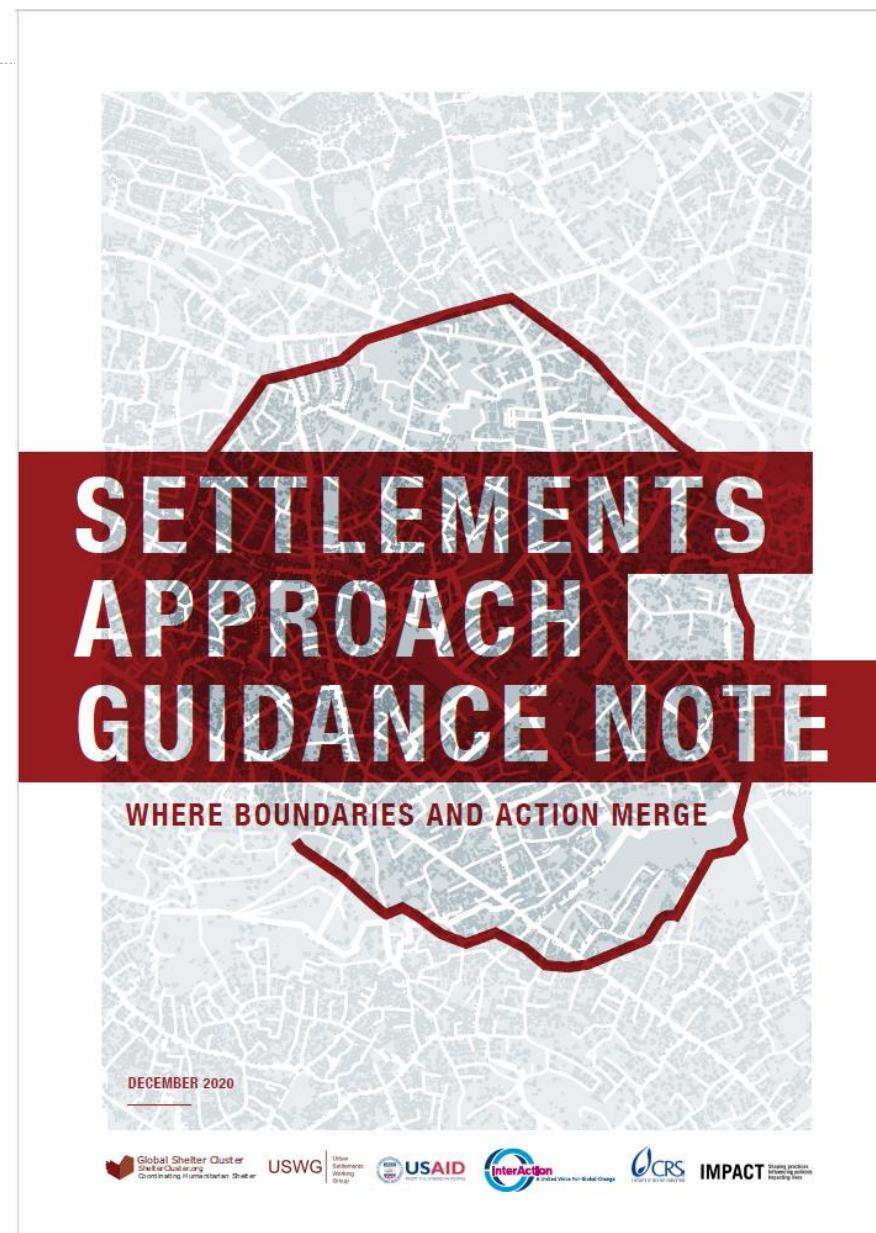
Currently, The government is **advancing initiatives to develop housing, territorial, and peacebuilding strategies** aimed at addressing the persistent social exclusion in communities that were under gang control and have now been reclaimed by the State.



The current context presents opportunities for the return and reintegration of forcibly displaced persons, as well as for preventing further displacement

Background:

- Since June 2024, the SC in El Salvador, with ongoing support from the GSC, is implementing a **Settlement approach initiative** in territories historically affected by violence and displacement.
- The initiative is been developed in close partnership with key stakeholders such as **RCO, UNCT, OCHA, Cluster Coordinators, national and local government, HDP, the private sector, NGOs, and the community.**
- The overall goal of the proposal is to contribute the achievement of **durable solutions for forced displacement** through the creation of an enabling protection environment
- This is being achieved through **settlement approach** that fosters conditions of security, access to rights and services, and dignity.





- 1. Implement Settlement Approach:** Considering the interactions between housing, and basic services (education, healthcare, etc.), livelihoods, environmental and protection risks, among others. (Promote intersectionality to maximize impact)



- 2. Operationalize Triple Nexus:** Support the development of shelter / settlement solutions to jointly address the challenges of displacement, climate change, and peace consolidation, improving synergies between humanitarian, development, and peacebuilding actors.



- 3. Inter-agency and inter-institutional coordination.** Improve coordination among different actors (humanitarian agencies, development organizations, public institutions, private sector, civil society, etc.) in prioritized communities through an area-based approach **Coordimap**



- 4. Facilitate Resource mobilization:** Contribute to generating data for the HNO and proposals for the HRP, connecting joint analysis and intersectoral planning with donor events.



1. MULTI-STAKEHOLDERS WORKSHOPS

To jointly agree on the scope, identify target settlement, establish a Task Force, develop tools, and more.

Engaging with:

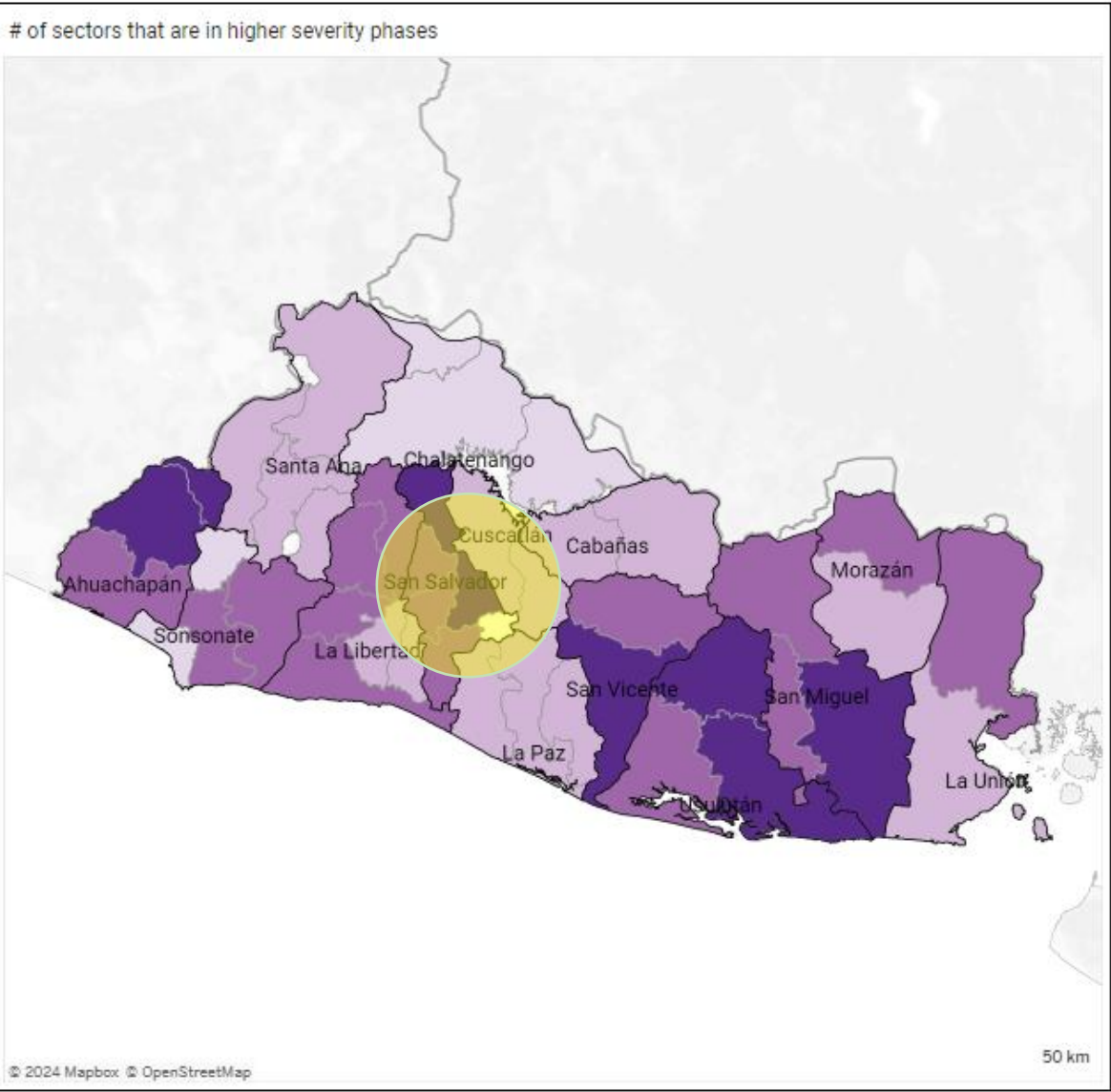
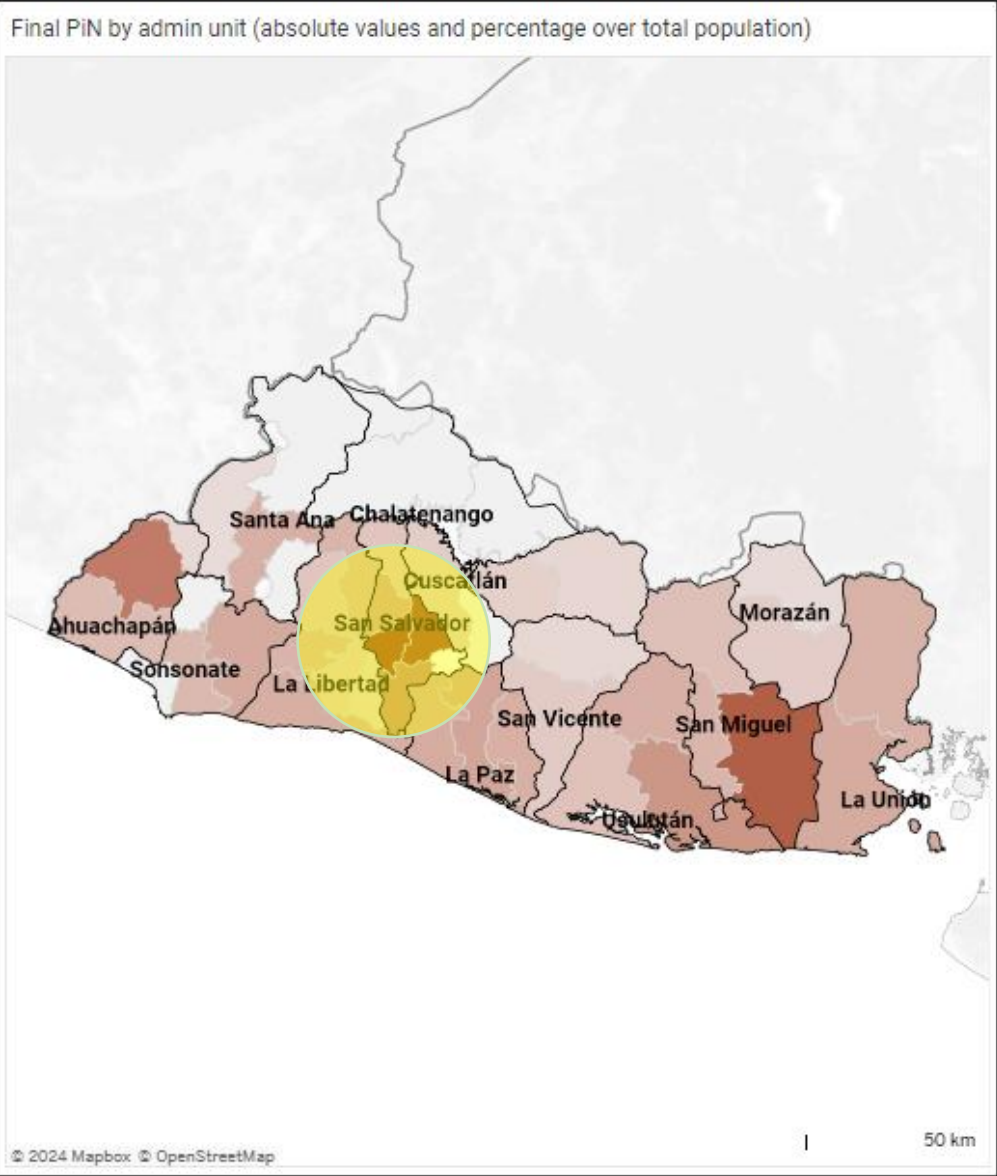
- OCHA
- Cluster Coordinators (Education, Protection, Health, Livelihoods, Nutrition, Food Security, WASH, etc.)
- National government Institutions
- Municipality
- Development actors.

When: SEPTEMBER / OCTOBER 2024



Humanitarian Need Overview (HPC) 2025

Severity (2): Which areas have a large number of sectors with high severity of needs?





2. Settlement-Level Intersectoral Mapping

Development of community maps at settlement level, with an intersectoral approach to facilitate participation and data collection.

Identify:

- Intersectoral Needs
- Intersectoral Solutions
- Community Capacities
- Underlying causes of the needs

WHO: OCHA / Cluster Coordinators

WHEN: October 2024



SUMMARY OF SETTLEMENT ASSESMENT



Intersector



GLOBAL
SHELTER CLUSTER

Coordinating Humanitarian Shelter and Settlements

| SECTOR / CLUSTER | # NEEDS | # SOLUTIONS |
|------------------|-----------|-------------|
| Shelter | 10 | 17 |
| Education | 9 | 12 |
| Enviroment | 8 | 8 |
| Health | 5 | 7 |
| Livelihoods | 9 | 19 |
| Protection | 11 | 20 |
| Food Security | 3 | 5 |
| WASH | 8 | 13 |
| TOTAL | 63 | 101 |

"More than 60% of the needs have been addressed"



3. SISTEMATIZE INFORMATION IN GEO-PORTAL

ALOJAMIENTO

NECESIDADES

NECESIDADES (LUGAR)

- Alquileres de vivienda elevados
- Desalojos de inquilinos por carecer de titularidad
- Deterioro de zonas verdes y áreas públicas
- Falta de iluminación (sensación de inseguridad)
- Ocupación ilegal de espacio público
- Riesgo de Incendio en el hogar

NECESIDADES (EJE)

- Acumulación de Basura

NECESIDADES (ZONA)

- Viviendas en alto riesgo de desastres (Carcavas)
- Viviendas dañadas
- Viviendas destruidas

SOLUCIONES

SOLUCIONES (LUGAR)

- Programa de Alquiler Social
- Dar preferencia personas de la comunidad, para compra de inmuebles (Realizar Campana Difusion)
- Estrategia Integral de Gestion desechos solidos
- Mejorar Iluminacion

Capas

Layers

- PROYECTOS_FINANCIADOS
- ALOJAMIENTO
- EDUCACION
- MEDIO AMBIENTE
- MEDIOS DE VIDA/ EMPRENDIMIENTO
- PROTECCION
- SALUD
- SEGURIDAD ALIMENTARIA
- NUTRICION
- WASH
- Col_La_Campanera_Intervenciones-MIVI

Map Labels:

- P4: Desalojos de inquilinos por carecer de titularidad
- S.4.1: Programa de Alquiler Social
- P5: Alquileres de vivienda elevados
- P9: Riesgo de Incendio en el hogar
- P8: Acumulacion de Basura
- P6: Falta de iluminacion (sensacion de inseguridad)
- P7: Deterioro de zonas verdes y areas publicas
- P3: Viviendas en alto riesgo de desastres (Carcavas)
- S.3.2: Realizar Obras de mitigacion en la Carcava
- P7: Deterioro de zonas verdes y areas publicas
- P10: Ocupacion ilegal de espacio publico
- P8: Acumulacion de Basura
- Viviendas destruidas

Streets: Calle Antigua Tonipepe, Calle Principal

URL: <https://experience.arcgis.com/experience/87dcee2eadc7402fb3d71852aebd23d1/page/GeoVisor>

Agua Potable

- Cañería dentro de la propiedad
- Cañería del vecino
- Cañería dentro de la vivienda

Sanitario

- Inodoro conectado a alcantarillado
- Inodoro conectado a fosa séptica
- Letrina

Energía

- Electricidad
- Otras fuentes
- Sin información

Basura

- Botadero Público
- La depositan en contenedores
- Contiguo a la Casa

Techo Vulnerable

440

Piso deteriorado

233

Pared Frágil

191

Ventanas endebles

68

Datos Básicos

Hogares

539
(Familias)

Jefa de Hogar

532



Demografía

Hombres

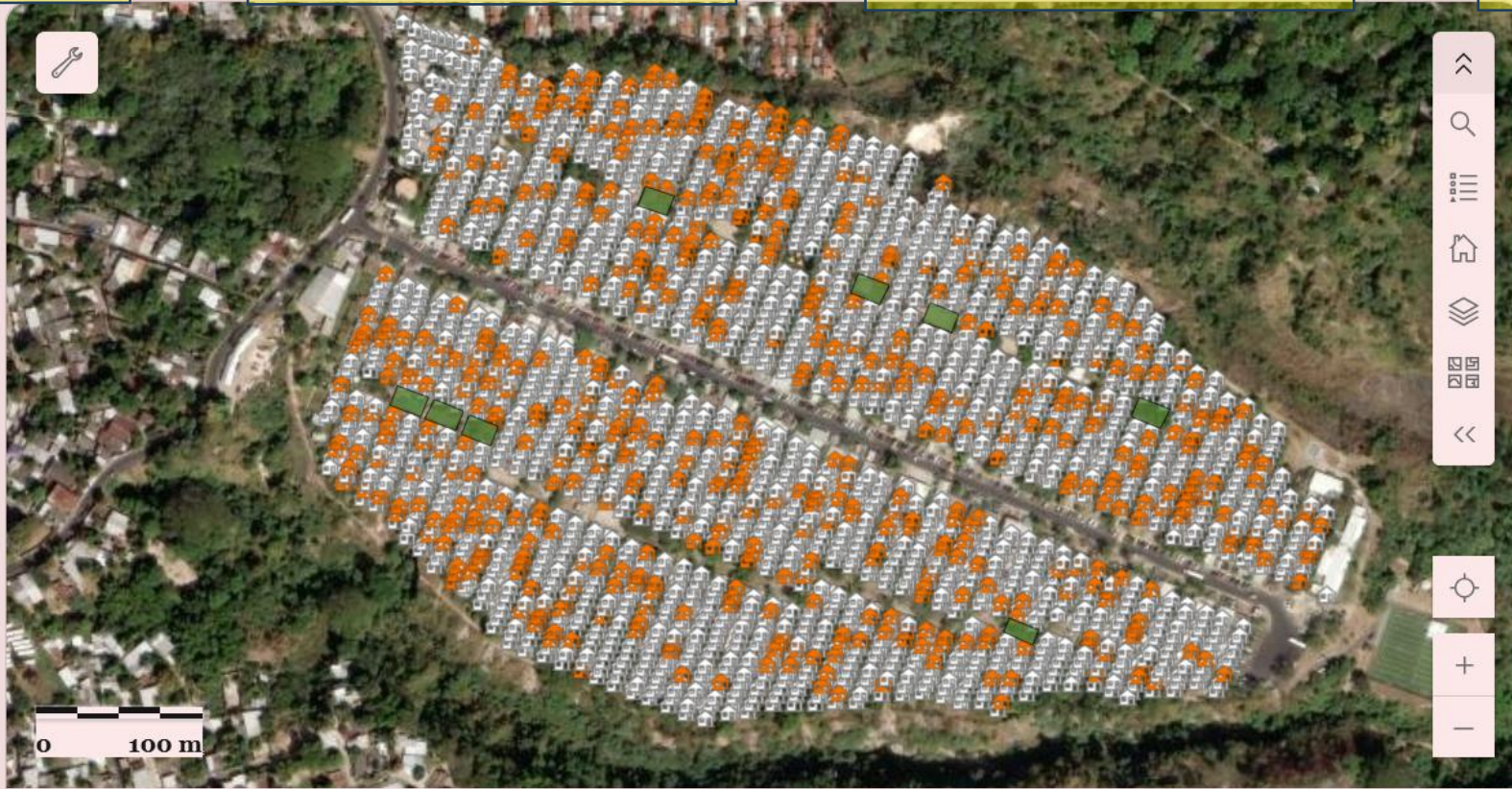
655

Mujeres

743

Desaparecidos

70



Tipo de tenencia

- Propia pagándose a plazos a in...
- Propia pagándose a plazos a in...
- En proceso de legalización

Propia



Viviendas a Intervenir



Viviendas Seleccionadas

Intervención

528
Viviendas

No Abandonadas

1,022
Total: 2,361

Intervención en el



Última actualización: hace 18 minutos

Intervención en la



Última actualización: hace 18 minutos

Intervención en



Última actualización: hace 18 minutos

Intervención en



Última actualización: hace 18 minutos

Última actualización: hace 18 minutos

Powered by Esri



4. Informative Session with HCT to share the initiative and receive feedback

WHO:

- RC / HCT
- OCHA
- Cluster Coordinator
- Community representative
- Government institutions

WHEN: January 2025



Involved Stakeholders:

- RCO
- UNCT / HCT
- Cluster Coordinators
- INGO, NGOs
- Community
- Government Institutions
- Private sector

WHEN: **Jun – Dec 2025**

1. Governance, social cohesion, community strengthening, and essential services



2. Livelihoods, food security, and economic recovery



3. Access to adequate housing, basic services, and essential infrastructure



4. Environment and disaster risk reduction



Infrastructure Projects implemented / projected from Jun 2024 – Jun 2026

- Rehabilitation of School
- Rehabilitation of Market
- Rehabilitation of Sport Facilities
- Construction of Community Center
- Construction of Mental Health space
- Rehabilitation of 500 houses
- Construction of community-based enterprise
- Improvement of greywater drainage systems
- Installation of community gardens
- Health campaigns
- Installation of public lights
- Initiative to improve solid waste management
- Development of vocational workshops
- HLP Assistance
- Construction of Police Station
- Infrastructure works to mitigate gully erosion

More than 25 intersectoral interventions have been implemented by multiple stakeholders since the start of the ABA Initiative in June 2024.

Investment 2024: 500 K
Investment 2025: 1.5 million
Investment 2026: 2.5 million

Preparation of Project Sheets

When: Sep 25 / Dec 25



ESPACIOS PÚBLICOS

Localidad
Escalinatas, Barrio Copacabana, Otavalo
Parque infantil, Barrio Monserrat, Otavalo

Implementación directa

**UNHCR
ACNUR**
Comisión de Alto Nivel
Refugiados y Migrantes

Presupuesto
\$ 3.808,00

Nombre
Intervención en escalinatas y parques

Descripción
El proyecto se enfocó en mejorar espacios comunitarios de barrios donde existe una amplia población de personas en movilidad humana en el cantón Otavalo. Estos proyectos buscan fomentar la coexistencia pacífica entre la población de acogida y población migrante y refugiada.

En el Barrio Copacabana se realizó el mejoramiento integral de mampostería, jardineras y bancas para fomentar la apropiación del espacio público por los pobladores de la zona, lo que mejora los niveles de seguridad en estos espacios.

En el Barrio Monserrat, se trabajó en el mantenimiento de los juegos infantiles en malas condiciones, pintura y mantenimiento de la mampostería de la cancha.



Escalinatas, Barrio Copacabana



Parque infantil, Barrio Monserrat


PORTFOLIO OF POTENTIAL INTERVENTIONS – JAP

SHELTER



A stack of three intervention cards for Shelter. Each card has a red header with the title 'SHELTER' and a small icon. The cards contain text, a small image of a tent, and a red footer with the date '2014-01-01'.

EDUCATION



A stack of three intervention cards for Education. Each card has a red header with the title 'EDUCATION' and a small icon. The cards contain text, a small image of a classroom, and a red footer with the date '2014-01-01'.

ENVIRONMENT



A stack of three intervention cards for Environment. Each card has a red header with the title 'ENVIRONMENT' and a small icon. The cards contain text, a small image of a landscape, and a red footer with the date '2014-01-01'.

WASH



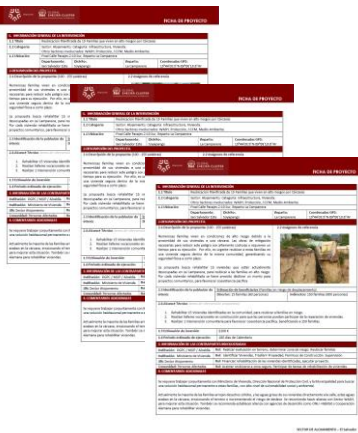
A stack of three intervention cards for WASH. Each card has a red header with the title 'WASH' and a small icon. The cards contain text, a small image of a water tap, and a red footer with the date '2014-01-01'.

PROTECTION



A stack of three intervention cards for Protection. Each card has a red header with the title 'PROTECTION' and a small icon. The cards contain text, a small image of a person, and a red footer with the date '2014-01-01'.

HEALTH



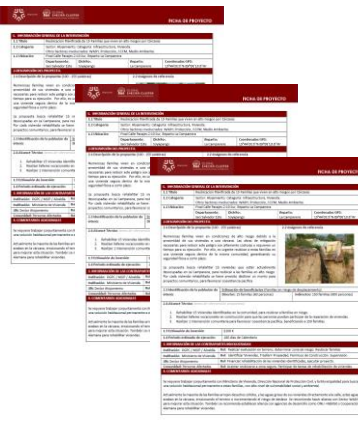
A stack of three intervention cards for Health. Each card has a red header with the title 'HEALTH' and a small icon. The cards contain text, a small image of a person, and a red footer with the date '2014-01-01'.

LIVELIHOODS



A stack of three intervention cards for Livelihoods. Each card has a red header with the title 'LIVELIHOODS' and a small icon. The cards contain text, a small image of a person working, and a red footer with the date '2014-01-01'.

NUTRICION

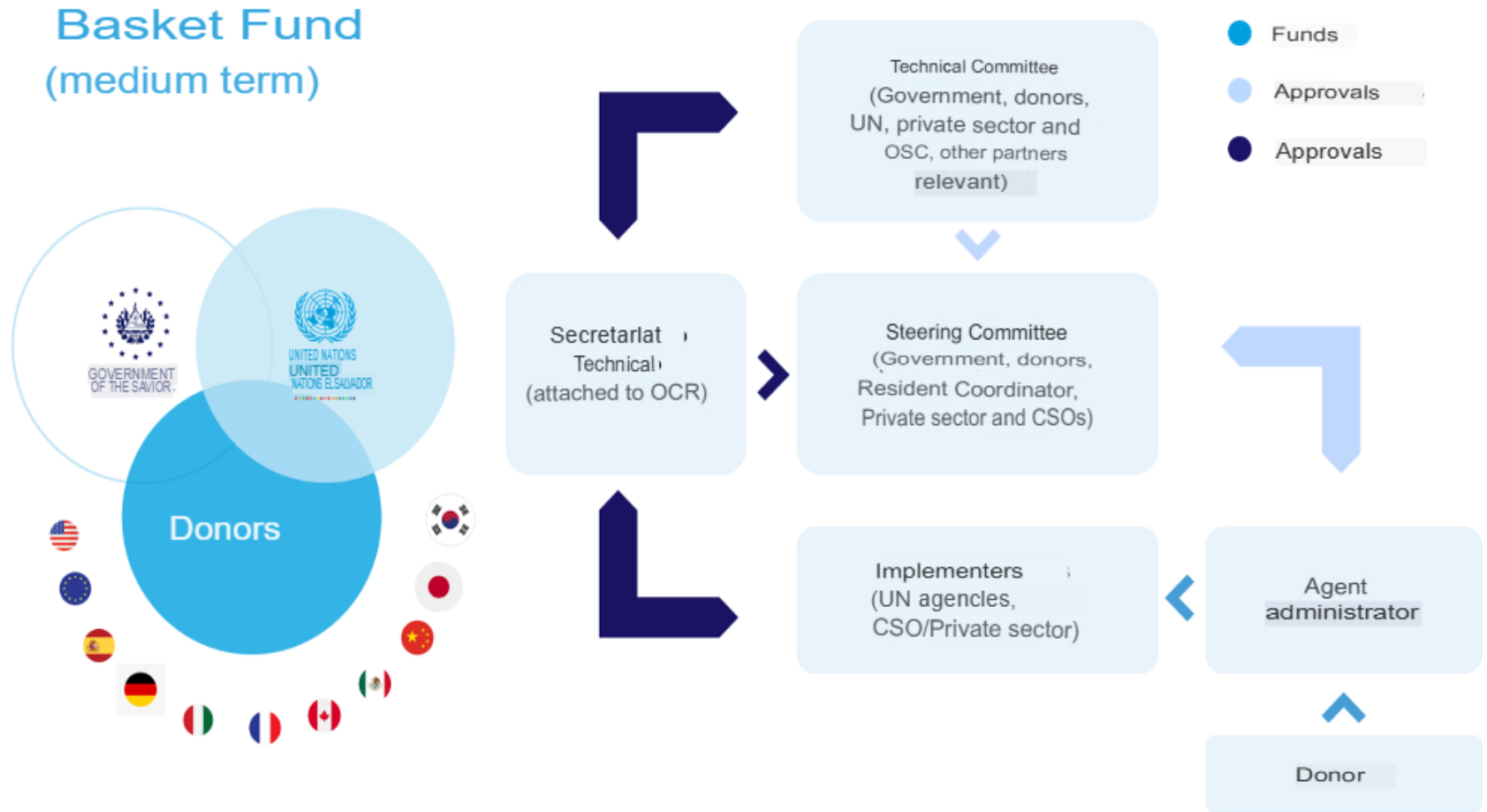


A stack of three intervention cards for Nutrition. Each card has a red header with the title 'NUTRICION' and a small icon. The cards contain text, a small image of a person, and a red footer with the date '2014-01-01'.

POOL FUND

Stablish mechanisms for the **sustainable financing of the Action Plan**, thus ensuring its viability in the short, medium, and long term.

The mechanism will also provide technical advisory services, monitoring, and evaluation of initiatives and projects, aiming to strengthen community, local, and national ownership.



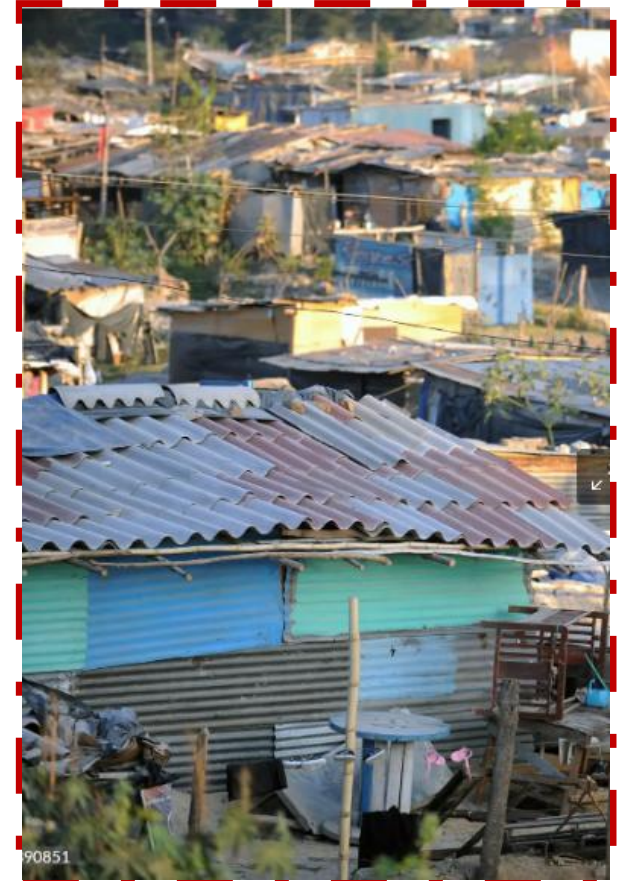
REPLICATE / ESCALE ABA INITIATIVE – EL SALVADOR



Settlement 1



Settlement 2



Settlement 3

Lessons Learned: Settlement Approach / ABC



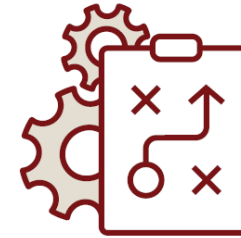
Maximize impact and optimize resources



Place the affected population at the center



Improve local coordination among multiple stakeholders



Bridge emergency relief with development and peace initiatives



Facilitate mobilization of resources

We need innovative tools that enable localized, inclusive, and integrated multisectoral responses

To joint address both the consequences and causes of crises

This is where the **CoordiMap** comes.

THANKS



**GLOBAL
SHELTER CLUSTER**

Coordinating Humanitarian Shelter and Settlements