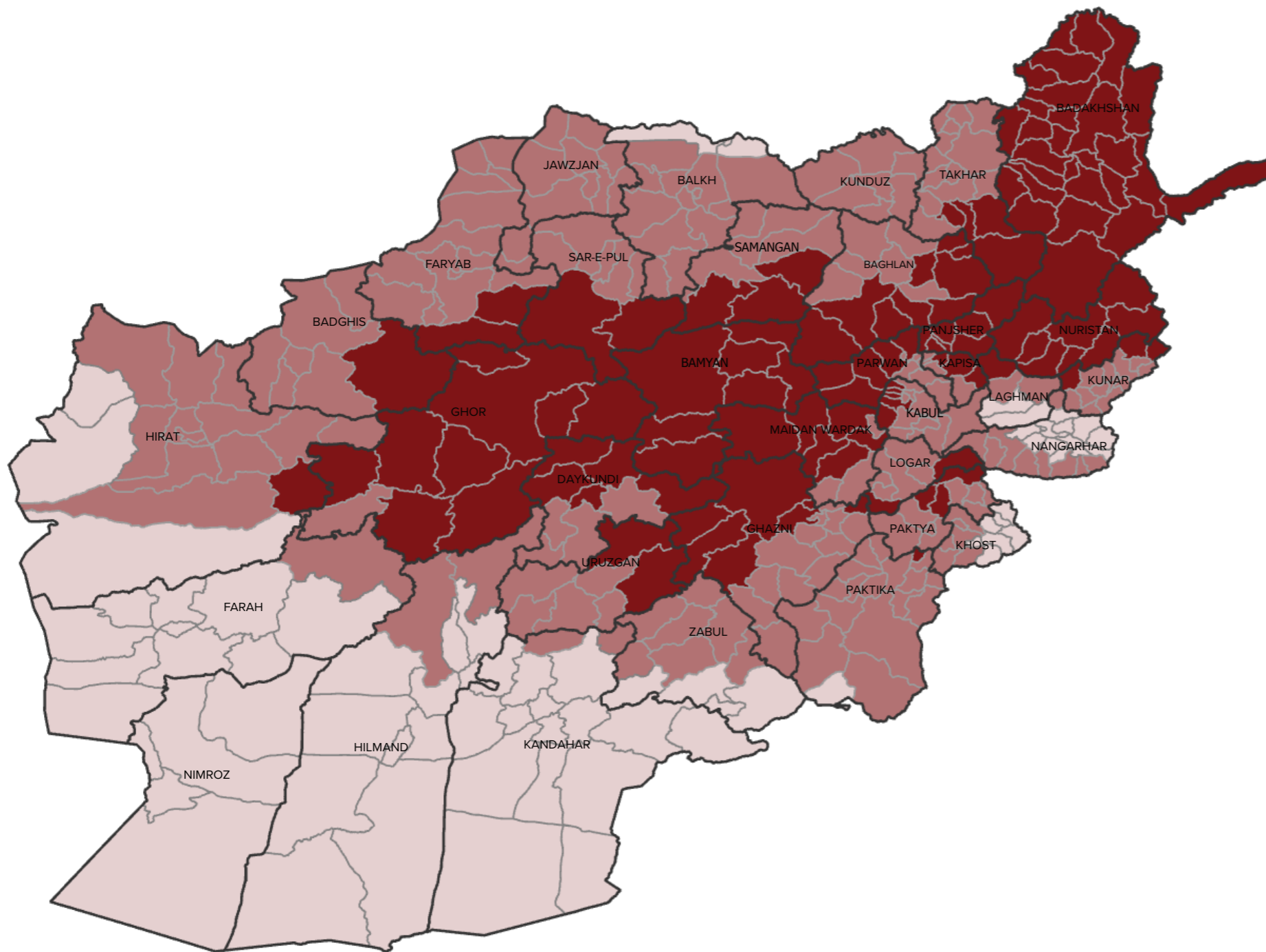


## OVERVIEW

Winterization assistance provides live saving support to the most vulnerable individuals, protecting them from harsh weather conditions. The winter season brings with it increased vulnerabilities from limited opportunities for food production and income generation, low land pastures and crop residuals for livestock rearing to increased cases of hypothermia, acute respiratory infections, in some cases death directly and indirectly related to the cold, a lack of protection from the elements, and in adequate personal insulation to preserve body core temperature.

Early identification of funds, enable partners to plan, procure and pre-position winter items prior to some parts of the country being cut off by heavy snow fall. A timely response will alleviate the adoption of negative coping mechanisms, lessen occurrences of respiratory infections, U-5 mortalities, hypothermia, and in some cases preventing mortalities especially for children and the elderly. With 81 percent of households having insufficient winter clothes and 77 percent lacking access to heating material, more than 1 million people residing in high priority districts will need seasonal support, to mitigate their exposure to the elements, and prevent health risks and other hazards



### District Priority \*

- Priority 1 : Low priority
- Priority 2 : Medium priority
- Priority 3 : High priority



## KEY FIGURES



**5,825,155**

People in need of winterization response



**1,007,489**

Individuals to be reached with winterization response

*Figures for Q4 2023 / Q1 2024*



## FUNDING STATUS

**\$ 63.6M**

**\$ 29.5M**

**\$ 34.1M**

Required

In Q4 2023

In Q1 2024

**GAP**

As of now , no funding available to assisted targeted households in need of winterization response

## BREAKDOWN BY ACTIVITIES

Activities	Households to be reached	Costs
Heating and fuel	143,927	\$ 38.9 M
Clothing Distribution	120,899	\$ 12 M
Blankets Distribution	105,067	\$ 8.1 M
Cash For Rent	6,458	\$ 1.4 M
Shelters Repair and Upgrade	3,352	\$ 3.2 M