



Yemen Shelter, Land and Site Coordination Cluster Common Pipeline Advocacy Note March 2026



Family affected by flood in Al Mukha district, Taizz. Photo: Mohammed Al Karibi / ADO Organization

Overview

The Yemen Shelter Cluster (SCT) respectfully draws the attention of the donor community to the critical role of its Common Pipeline system, established in mid-2018 to address the urgent needs of populations affected by displacement and climate-related shocks. The Common Pipeline serves as a coordinated and shared mechanism for the procurement, storage, and distribution of emergency shelter kits and essential non-food items (NFIs), including mattresses, blankets, and kitchen sets. It enables humanitarian partners—national and international NGOs as well as UN agencies—to deliver timely, standardized assistance to vulnerable families across Yemen.

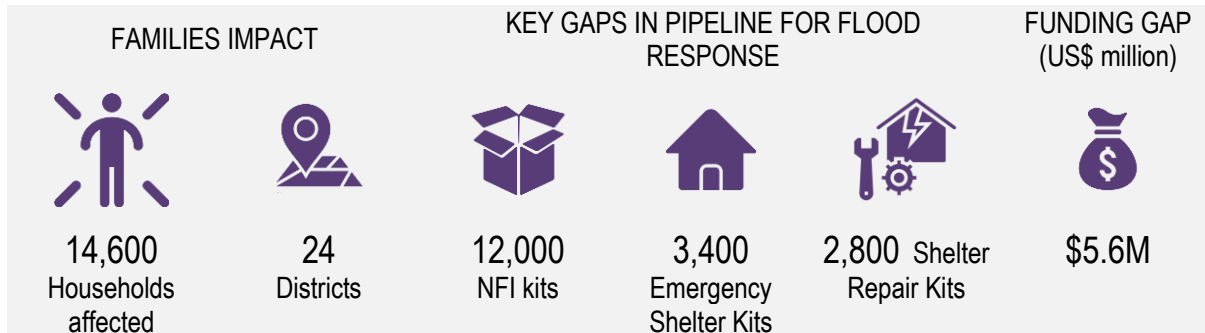
At present, the Common Pipeline is facing a severe and unprecedented shortfall. Stocks have been fully depleted following extensive distributions during the 2025 rainy season, compounded by significant funding gaps that have prevented replenishment. As a result, nine Common Pipeline warehouses have been forced to close, with the final two ceasing operations at the end of 2025. This comes at a time when climate change is intensifying seasonal flooding, leaving an estimated 66,000 vulnerable families at heightened risk without access to essential shelter and NFI support.

The 2026 rainy season began earlier than expected, with increased intensity observed since March. In the final week of March alone, flooding affected approximately 15,000 families across seven governorates. However, due to the lack of available resources, the shelter and NFI response has reached only 11 per cent of identified needs. This gap underscores the urgent mismatch between escalating humanitarian needs and the Cluster's current response capacity.

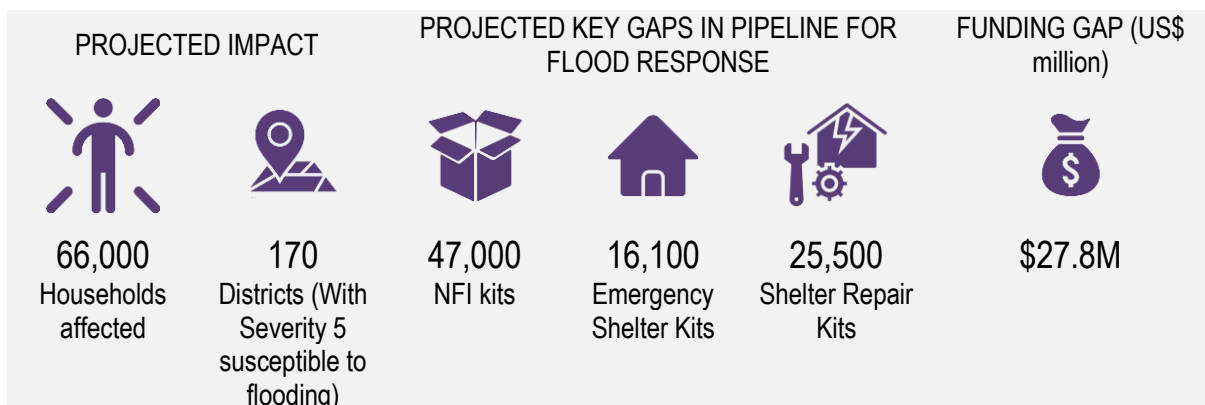
Without immediate and sustained donor support, the Cluster's ability to respond to peak flood impacts and potential new displacement caused by conflict will remain critically constrained.

Reinvestment in the Common Pipeline is essential to restore pre-positioned stocks, enable rapid emergency response, and strengthen the resilience of affected communities. The Yemen Shelter Cluster calls upon donors to prioritize flexible and timely funding to ensure that life-saving shelter and NFI assistance can be delivered at scale, when and where it is needed most.

Current Needs, Gaps and Financial Requirements:



Projection of Needs, Gaps and Financial Requirements:



Reference: [Shelter and NFI Kits Contingency Stocks Dashboard - March 2026](#)