



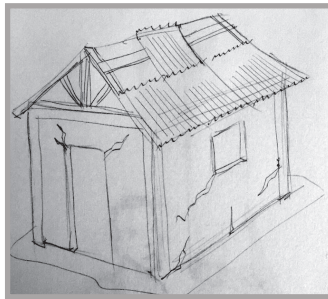
PADF

FONDATION PANAMÉRICAINNE DE DÉVELOPPEMENT

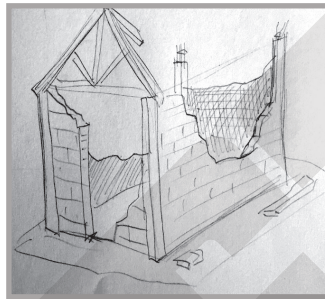
GID REPARASYON KAY

Metòd reparasyon sa yo soti nan gid pratik pou repara ti kay an Ayiti ke Ministè Travo Piblik, Transpò ak Kominikasyon (MTPTC) te pibliye.

1.- Identifye kay ki ka repara ak kay ki paka repara

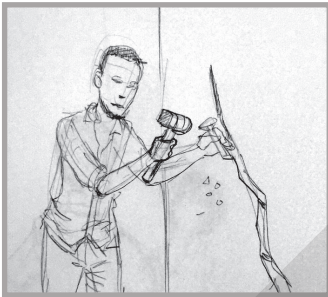


Kay ki ka repara



Kay ki paka repara

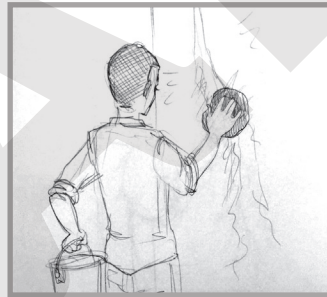
2.- Repare mi ki fisire



Retire krep ki bò fisi a ak prekosyon



Ouvè fisi a pou l ka pran mòtye

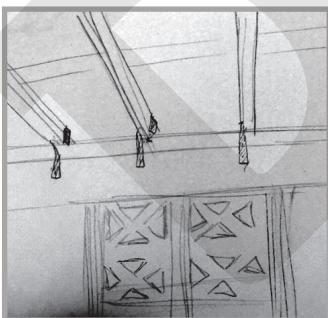


Netwaye fisi a ak dlo epi mouye mi an

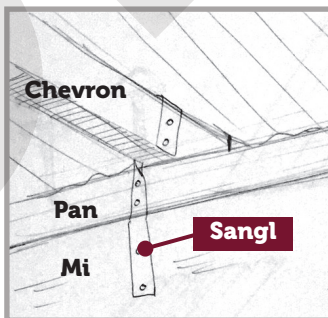


Mete mòtye nan fisi a epi endwi li

3.- Repare chapant do kay tòl

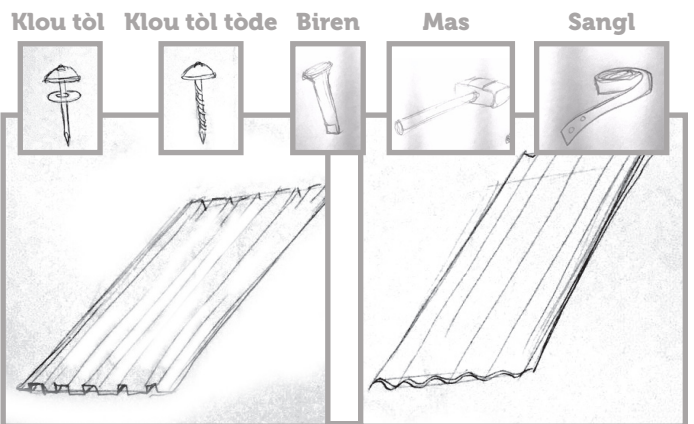


Bye fikse chapant do kay yo ak sangl



Chevron
Pan
Mi
Sangl

sagl lan makonnen ak chevron, pan ak mi kay la



Klou tòl Klou tòl tòde Biren Mas Sangl

Tòl ak klou ki bon pou kloure do kay