

INFORMATION AND ENGAGEMENT

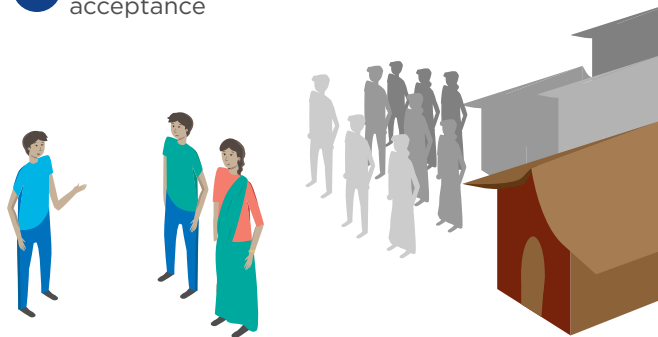
- 1 Provide **clear, reliable information** about quarantine measures



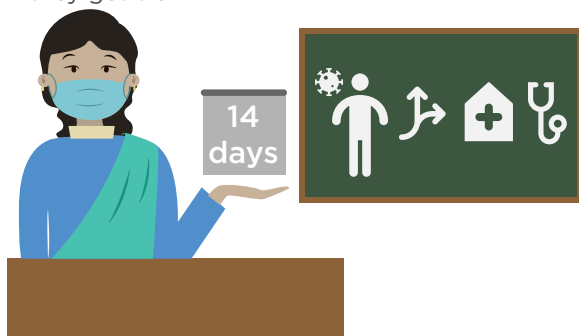
- 2 Provide **visual, verbal, and written** information



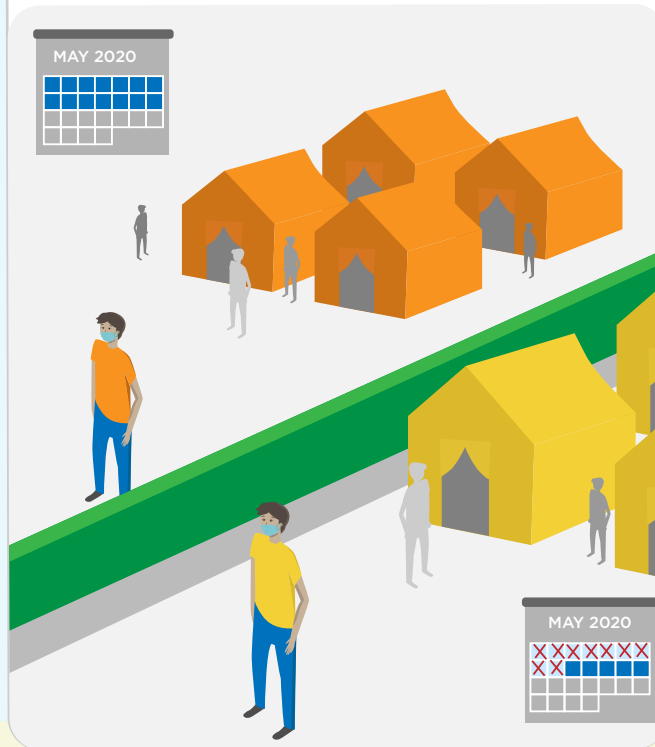
- 3 **Engage communities** to gain quarantine acceptance



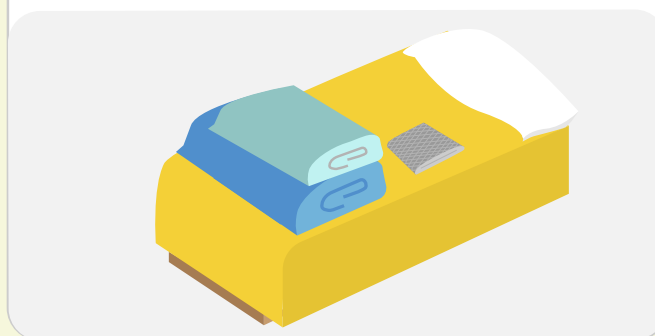
- 4 Explain people's **rights, services available, how long they need to stay** and what will happen if they get sick



- 5 Provide accommodation for a minimum of **14 days**; cohorts will **need to be tracked** so new people arriving don't cross over with existing quarantined people

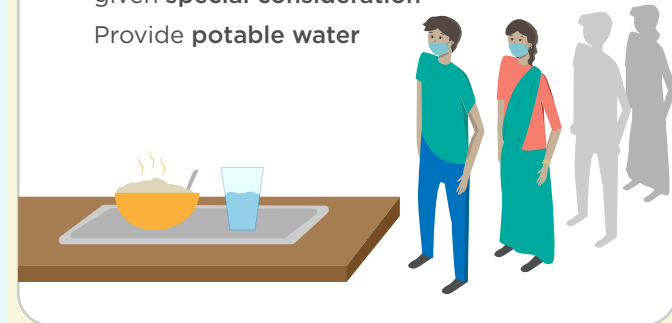


- 4 Provide **blankets, bedsheet and mosquito nets** as needed



BASIC NEEDS

- 1 Provide **hygienic food and nutrition**; ensure needs of children, pregnant mothers, elderly and people with pre-existing conditions are given **special consideration**
Provide **potable water**



- 2 Ensure people with pre-existing conditions have access to **appropriate health care and medical supplies**



- 3 Provide **personal hygiene and dignity kits** adapted to gender

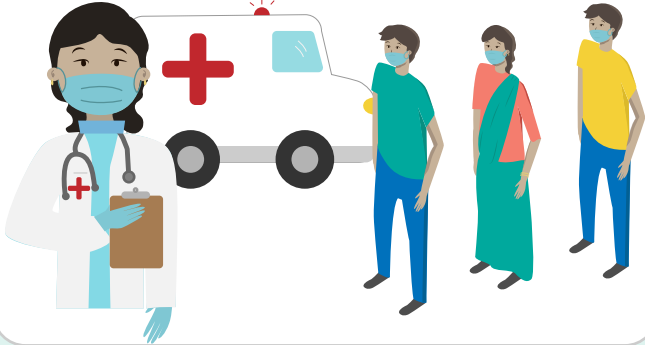


Practices and messages recommended here are only overarching guidelines and can be adopted per context, while setting up the quarantine facilities.



SERVICES

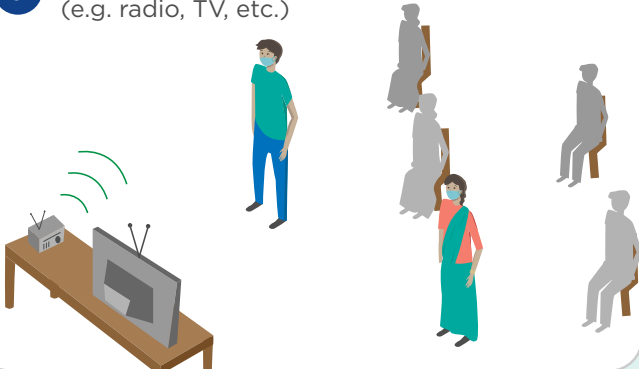
- 1 Regularly **monitor** people for **COVID** or **pre-existing conditions**. Ensure **quick transfer services to hospital** for sick people



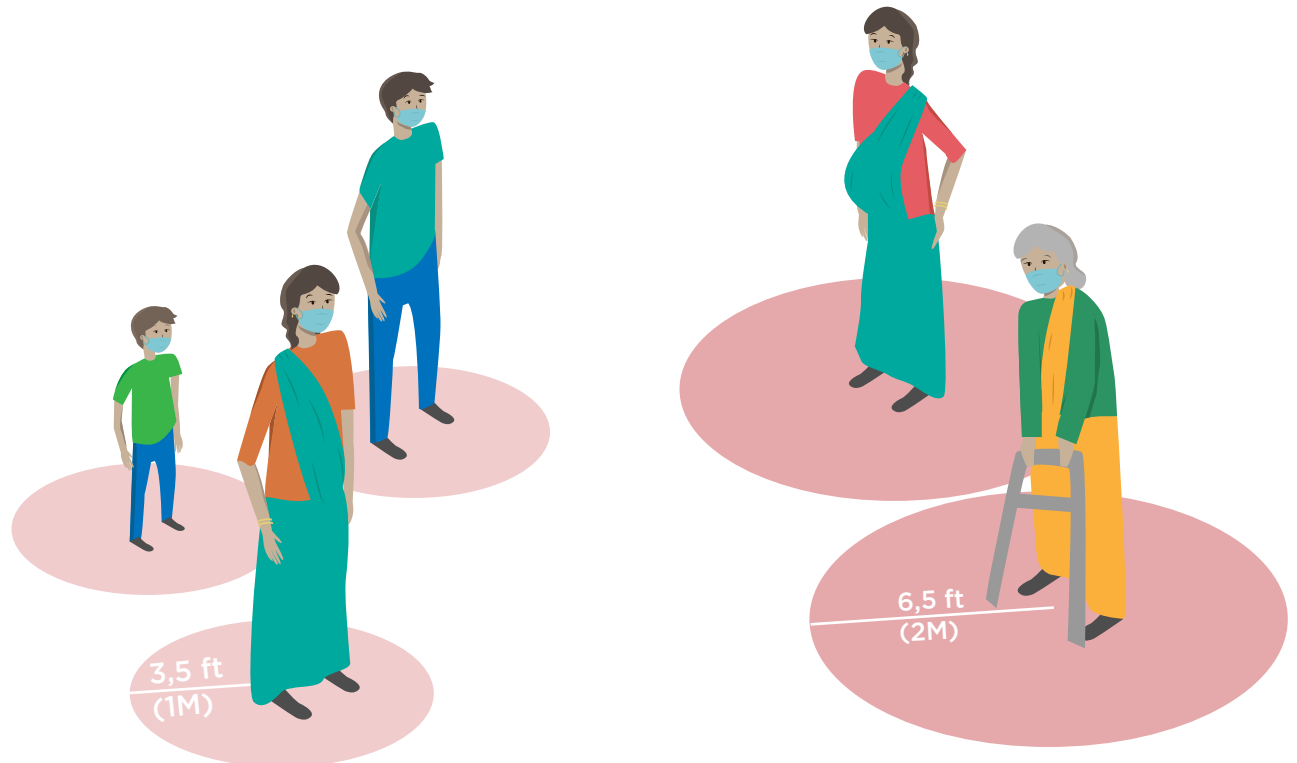
- 2 Provide a **phone or internet** connection for occupants to **communicate with family members** outside the centre



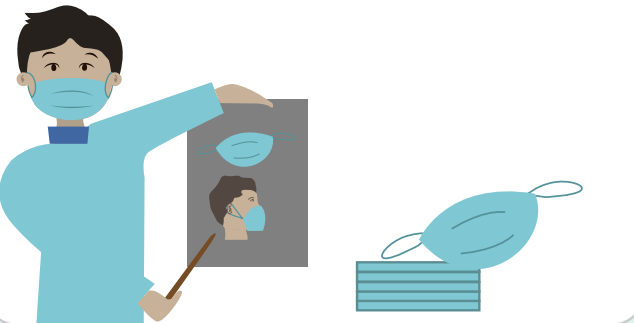
- 3 Provide **sources of entertainment** for people (e.g. radio, TV, etc.)



- 4 Ensure **medical attention and special safety measures** to prevent transmission among **high-risk groups**: elderly and people with comorbid conditions



- 5 Ensure people are given an adequate number of **masks** to protect themselves and are **taught** how to use them



- 6 Ensure **fire safety equipment and emergency escape procedures** are in place



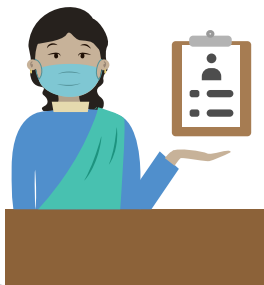
- 7 Put in place a **stock management system**



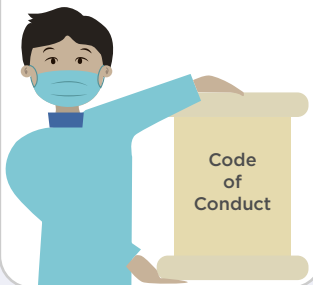
Practices and messages recommended here are only overarching guidelines and can be adopted per context, while setting up the quarantine facilities.

ACCOUNTABILITY & PROTECTION

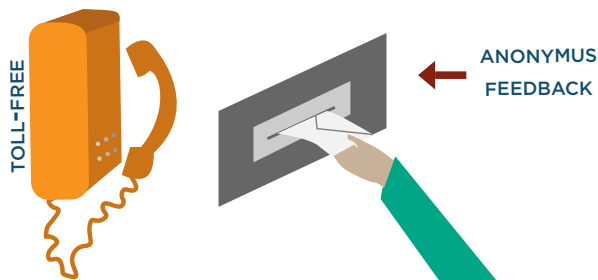
1 Put in place an administrative system to deal with **registration and case management**



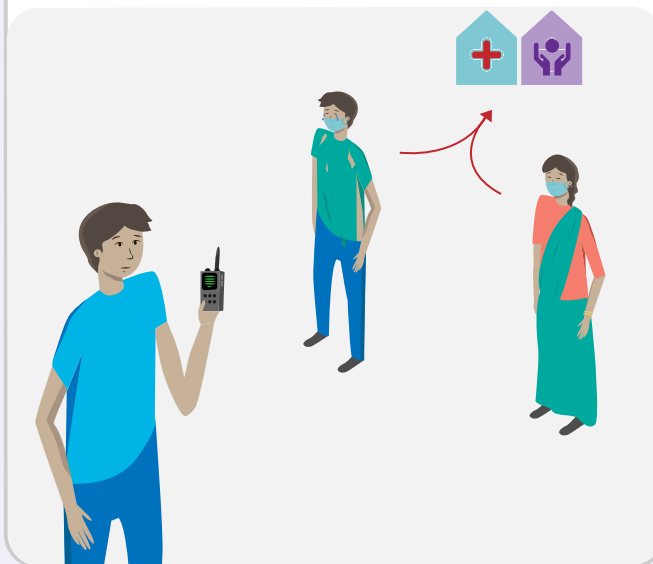
2 Put in places **codes of conduct** for staff and occupants



3 Ensure there are **safe, confidential feedback and support mechanisms** in place to report concerns or complaints.



6 Ensure standard operating procedures, including **referral to appropriate services**, are in place for any protection incidents experienced while in the centres



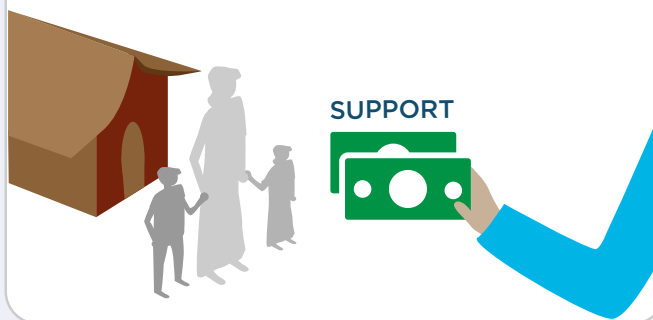
4 Provide **childcare** support where needed



5 Provide **psychosocial** support



7 Support for loss of income or other family members



Practices and messages recommended here are only overarching guidelines and can be adopted per context, while setting up the quarantine facilities.

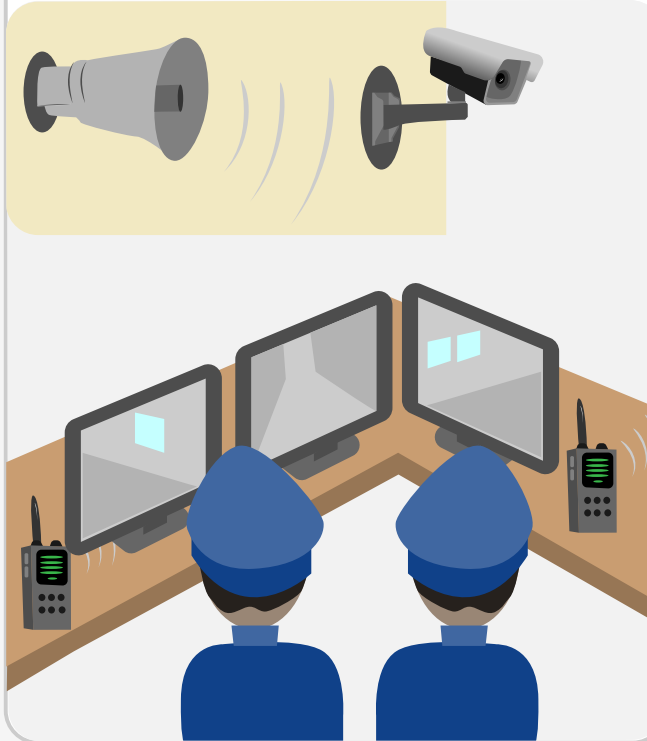


SECURITY

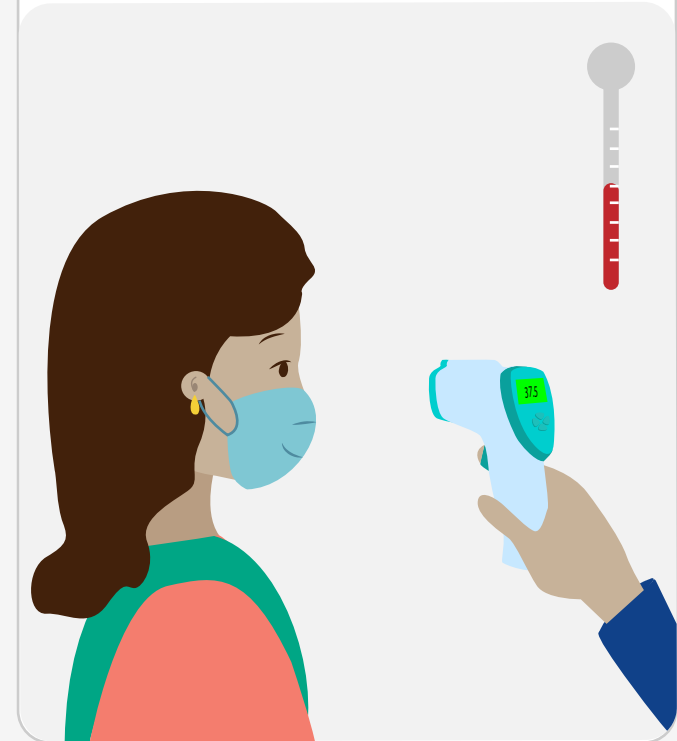
- 1 Train all security staff on appropriate conduct with occupants. Emphasise **treatment of occupants with dignity and respect**



- 4 Install CCTV and control room for security; include PA system



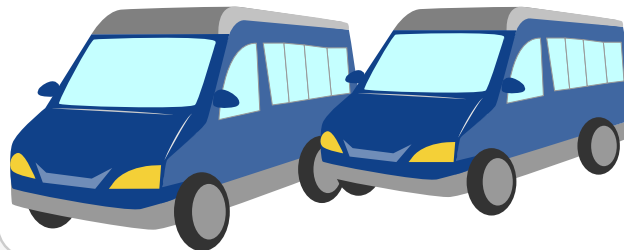
- 6 Temperature checks at every entry with infrared thermometer



- 2 Security personnel assigned for the quarantine facility should be provided with specific **training and medical equipment**



- 5 Separate **transport** to take people to and from the quarantine facility



- 3 Hire several **female security staff** where possible



- 7 Security to be provided **24 hours a day**

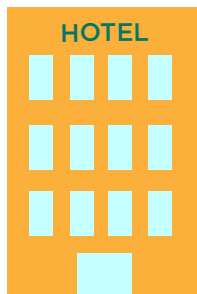


Practices and messages recommended here are only overarching guidelines and can be adopted per context, while setting up the quarantine facilities.



INFRASTRUCTURE

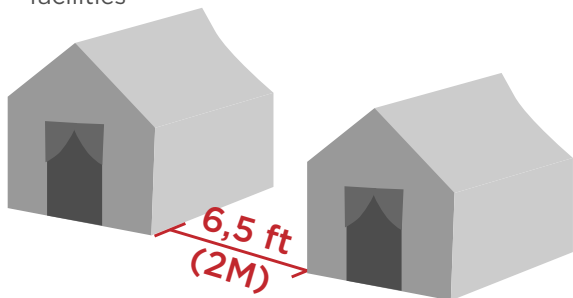
- A** Provide **individual accommodation** with private sanitation facilities where possible e.g. hotels, dormitories



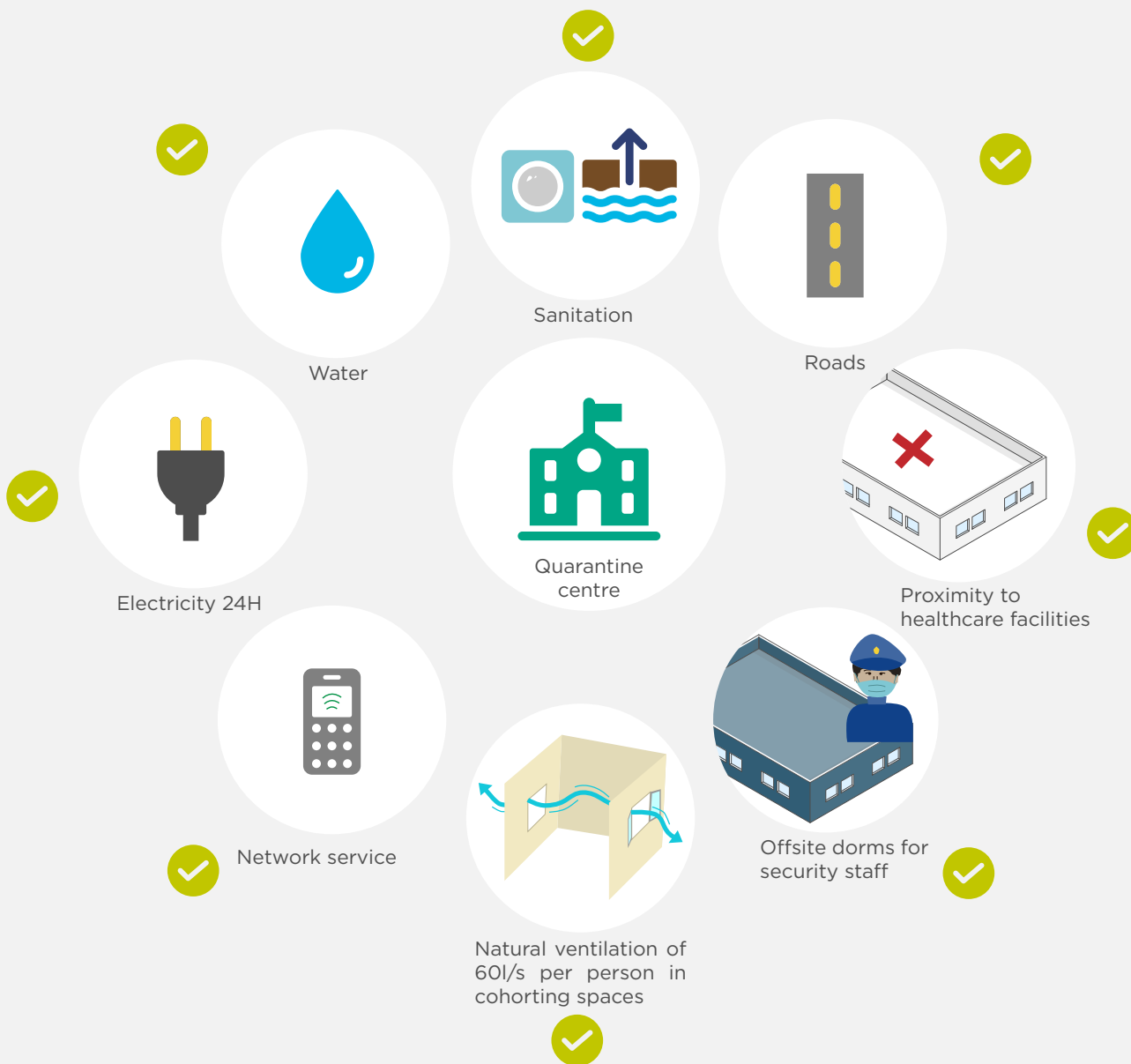
- B** Use **existing community buildings** where possible (e.g. community centres, factories / warehouses, etc.)



- C** **Tents** may need to be used for temporary quarantine facilities or to expand existing facilities



EXISTING BUILDING REQUIREMENTS

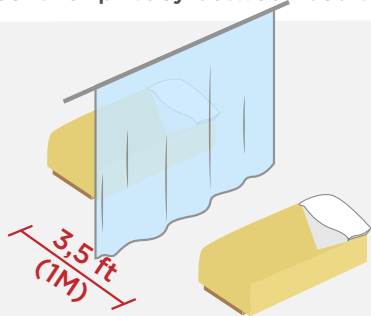


Practices and messages recommended here are only overarching guidelines and can be adopted per context, while setting up the quarantine facilities.

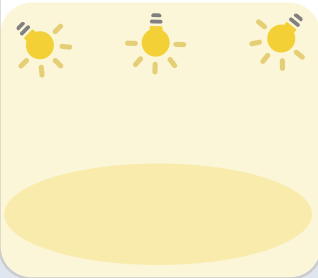


INFRASTRUCTURE

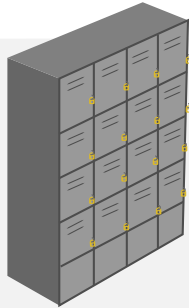
- 1** Ensure physical distancing and a **minimum of 3.5 ft (1m)** between beds. Provide **curtains or screens for privacy** between bed spaces



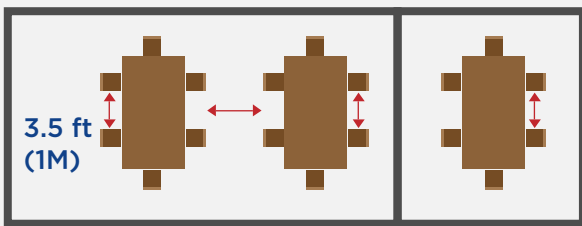
- 2** Ensure **adequate and efficient lighting**, especially in communal spaces



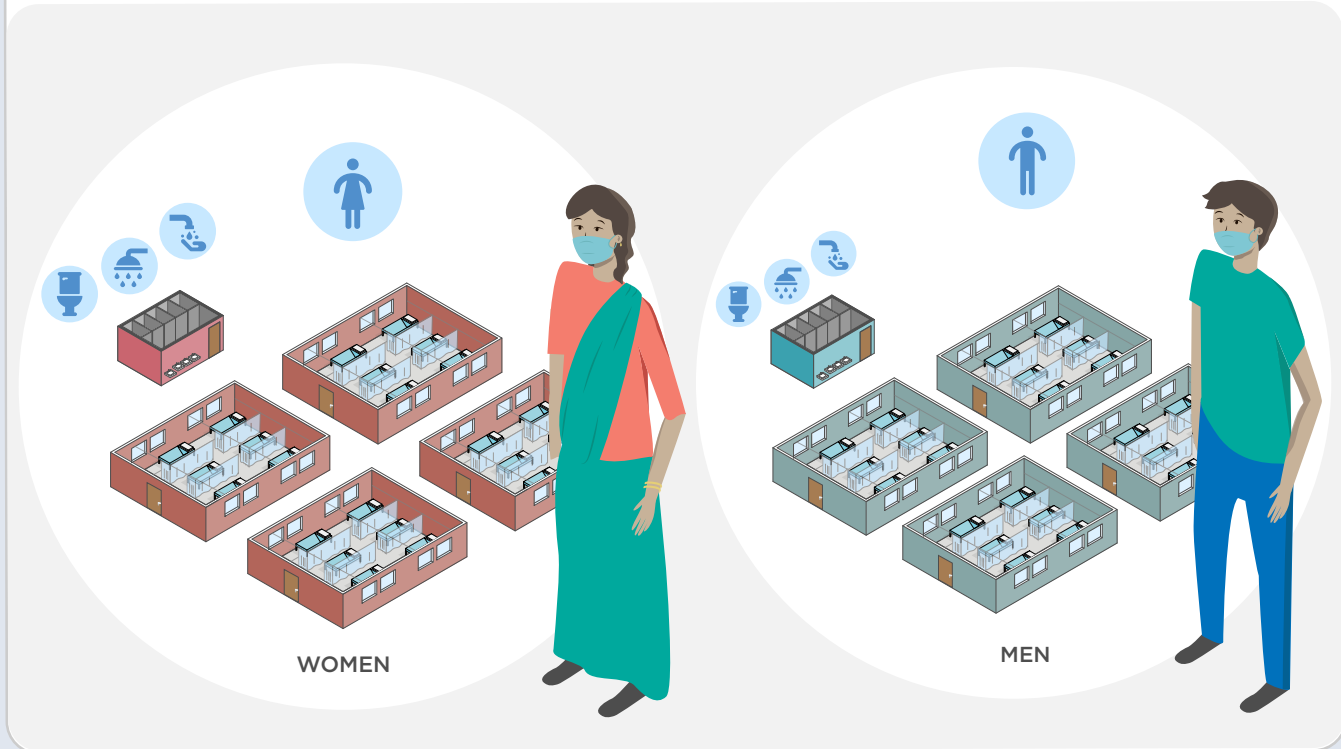
- 3** Provide **secure storage for personal items**



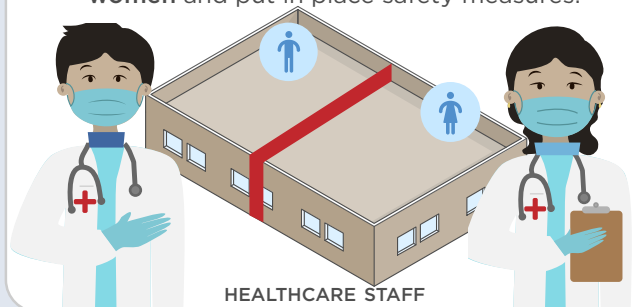
- 4** Ensure **3.5 ft (1m)** distance in dining areas. If not possible, provide staggered timetables. A **separated dining area** should be assigned for staff.



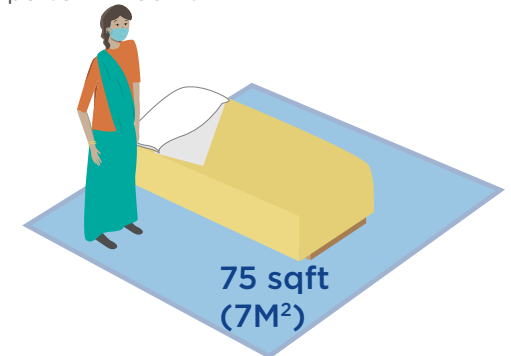
- 5** **Separate men and women** and put in place **safety measures**



- 6** Cohort **healthcare workers in separate, onsite accommodation** with toilets, showers and handwashing area. **Separate men and women** and put in place safety measures.



- 7** Ensure at least **75 square feet** per person in rooms

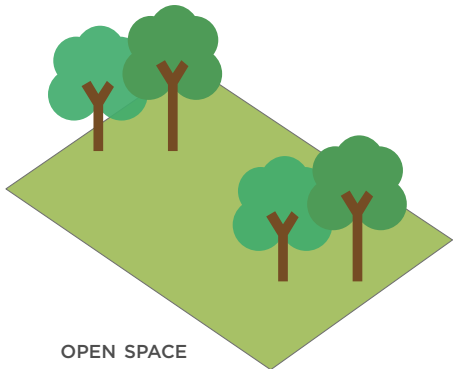


Practices and messages recommended here are only overarching guidelines and can be adopted per context, while setting up the quarantine facilities.



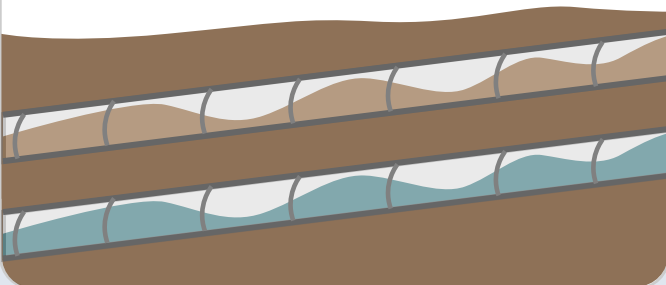
INFRASTRUCTURE

- 8 Provide external space for socializing at distance

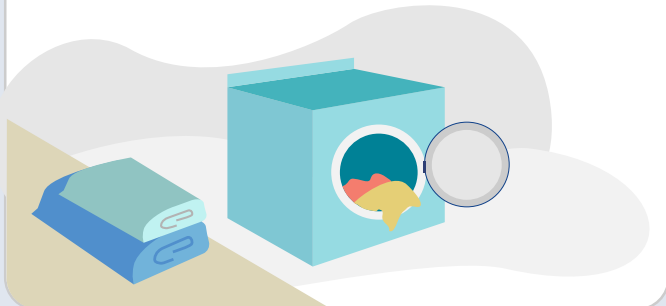


OPEN SPACE

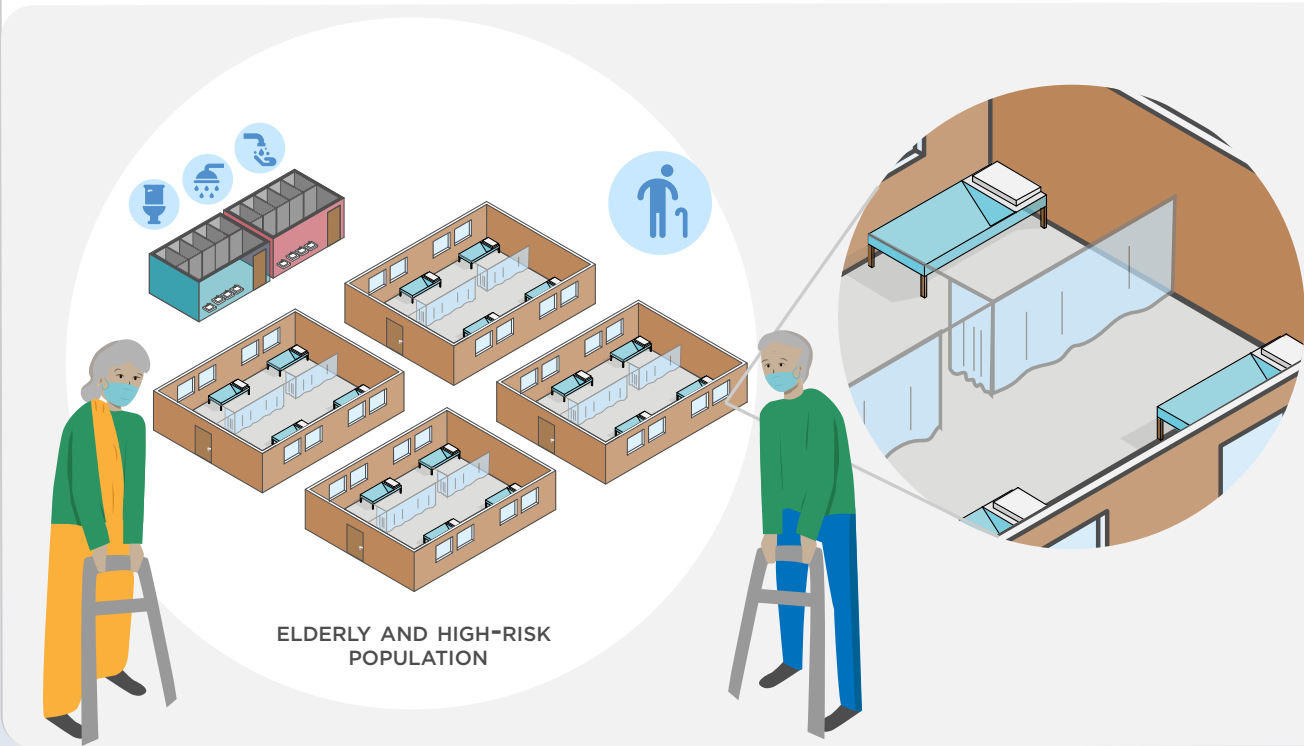
- 9 Ensure there is adequate space and facilities on site to manage grey water, black wastewater and/or faecal sludge appropriately



- 10 Ensure laundry services are available for bed linen to be washed regularly and for individuals to wash their own clothing

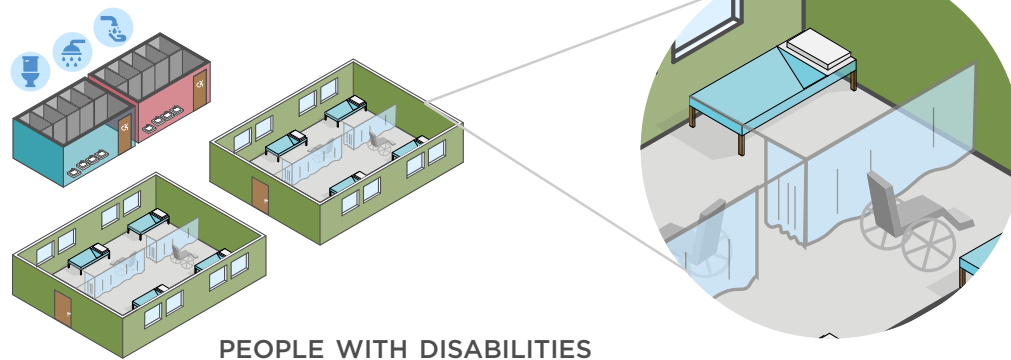


- 11 Isolate medically high-risk people (elderly, pregnant women, and those with pre-existing comorbid conditions) individually where possible. If not, ensure there are less people per room and greater space between beds (6.5 ft, 2M)



ELDERLY AND HIGH-RISK POPULATION

- 12 Some bedrooms should be accessible for people with disabilities



PEOPLE WITH DISABILITIES

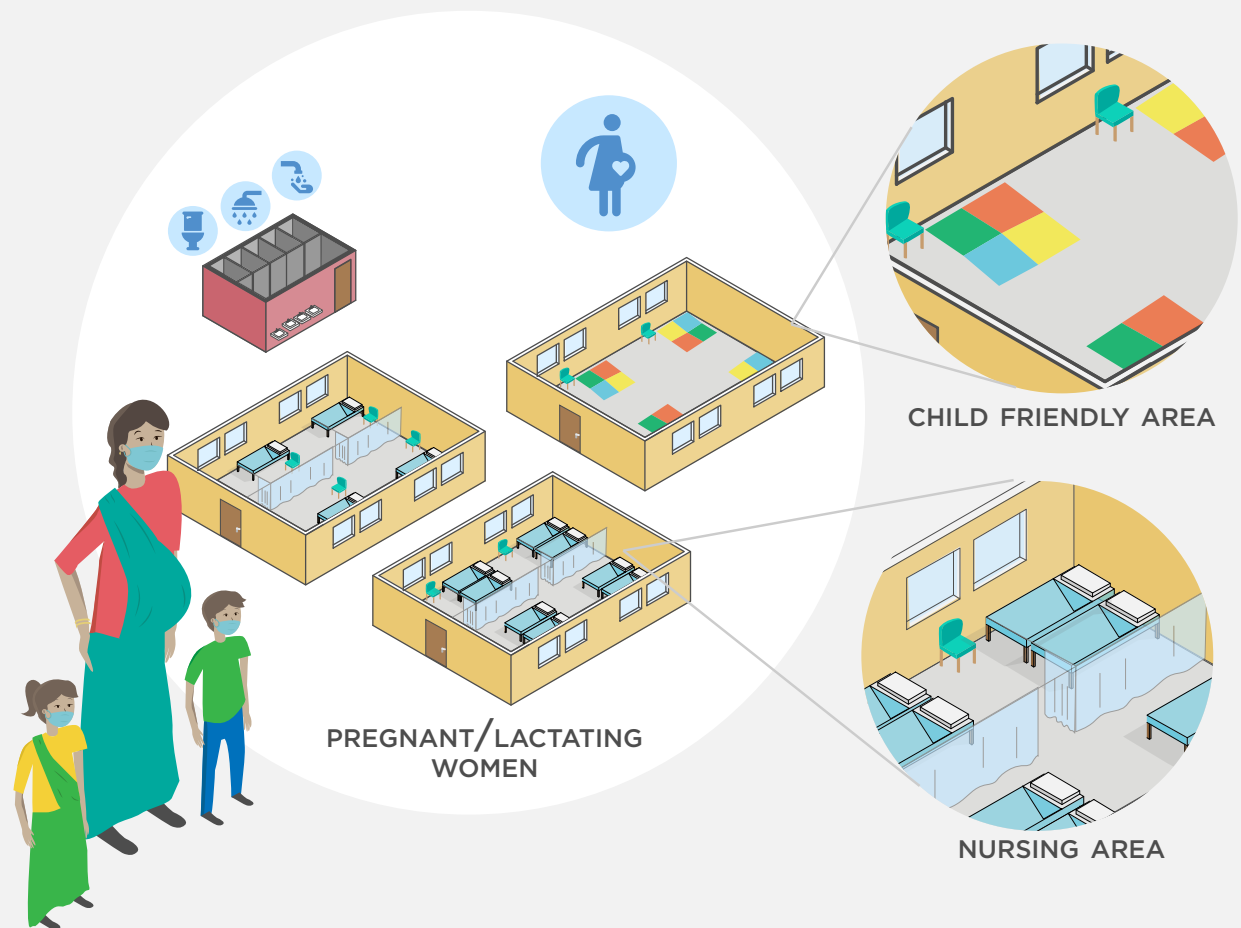
Practices and messages recommended here are only overarching guidelines and can be adopted per context, while setting up the quarantine facilities.



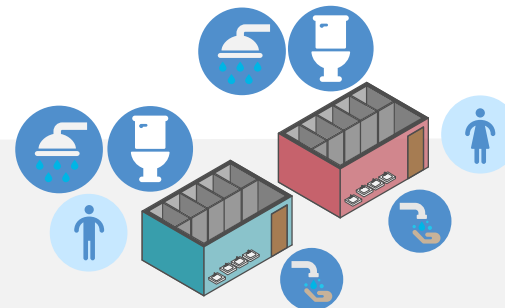
INFRASTRUCTURE

- 13** Separate and secure spaces should be provided for pregnant women or women with children and/or family rooms. Including locks on the inside of doors where possible, at a height that cannot be reached by young children (to avoid them locking themselves in)

Include **privacy areas for nursing mothers and childfriendly spaces**



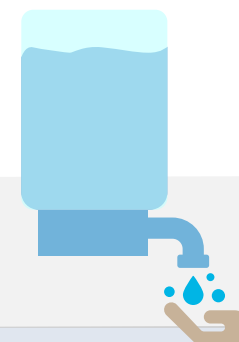
- 14** Separate, secure toilets/showers for men and women, labelled by sex; 1 toilet and shower per 6 people, **separate sanitation facilities for security guards and healthcare staff**



- 15** At least **2 disabled toilets and 2 showers**, one male, one female, per facility e.g. commode chairs and bucket toilets



- 16** Handwashing stations minimum 1 per 10 people



Practices and messages recommended here are only overarching guidelines and can be adopted per context, while setting up the quarantine facilities.



WATER, WASTE MANAGEMENT & HYGIENE

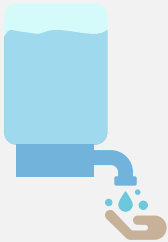
- 1** Ensure water storage of at least 48 hours. Minimum 60 litres/day per person. There are 4 systems of water to consider:



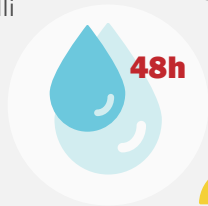
Drinking water
0.2-0.5mg/L
Free from E-Colli



Cleaning surfaces
0.2% chlorine



Handwashing & bathing
0.05% chlorine

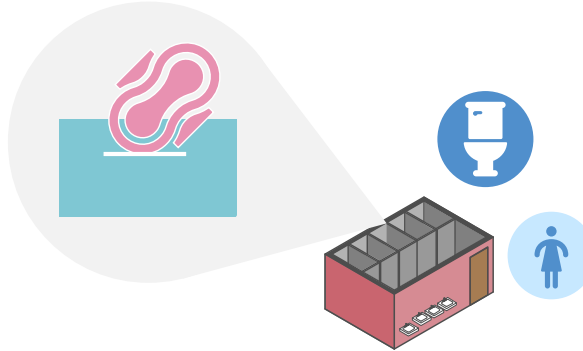


Cleaning heavily contaminated areas
2% chlorine

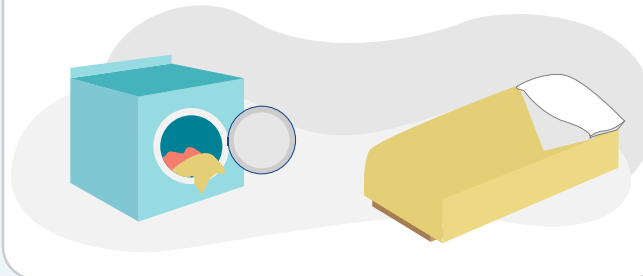
- 2** Handwashing stations equipped with safe water and **soap or alcohol rub**. Air dry or paper towels
[Proper hand hygiene here](#)



- 3** Ensure **provisions are made for menstrual hygiene** management in female toilets



- 4** Disinfect all **linen** daily with 0.1% chlorine solution after soaking if visible soiled



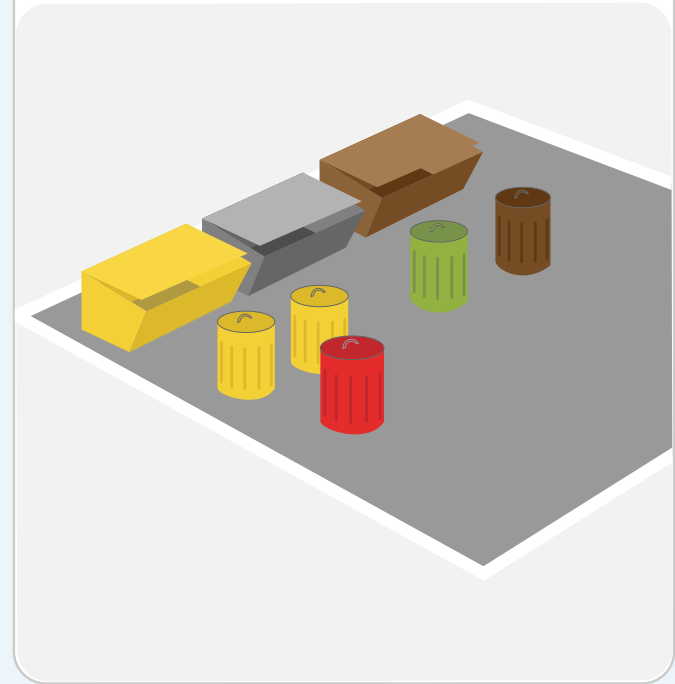
- 5** Clean floors and horizontal work surfaces daily with water and detergent.
2% chlorine solution for disinfecting spaces contaminated with vomit, faeces and corpses



- 6** Clean, **disinfect/sterilize reusable medical devices** depending on risk before each use. Clean and **disinfect high-touch surfaces** daily with 0.2% chlorine solution



- 7** Ensure there is adequate space in the **waste zone** for the various different types and quantities of waste



Practices and messages recommended here are only overarching guidelines and can be adopted per context, while setting up the quarantine facilities.



WATER, WASTE MANAGEMENT & HYGIENE

8 Keep healthcare waste separate; **use color coded bin method** to match type of waste (yellow, red, black, and brown). Include waste bin in female toilets. At least one set of waste containers should be provided per 20 beds in a ward.



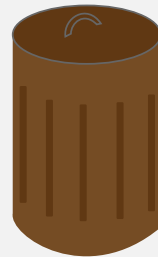
YELLOW
Medical waste



RED
Non-degradable
waste

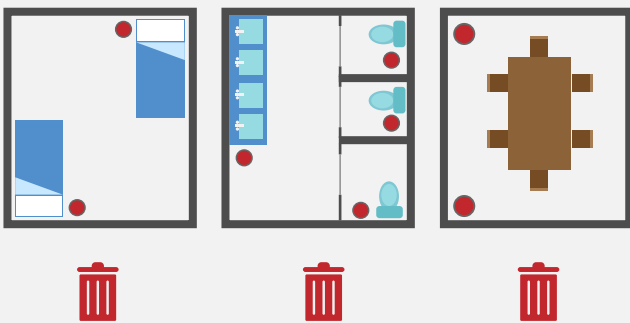


GREEN
Degradable
waste

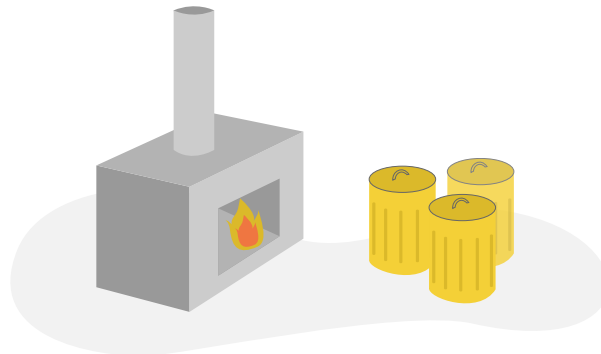


BROWN
Reusable waste

9 Place **trash bins** in quarantined people's rooms and in female toilets, as well as in common areas (e.g. dining area)



10 Ensure there is **access to an incinerator** either on site or through auxiliary services for the disposal of contaminated clothing and disposable PPE items



Practices and messages recommended here are only overarching guidelines and can be adopted per context, while setting up the quarantine facilities.

