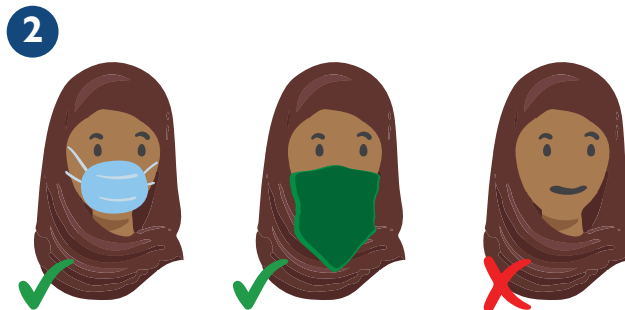


NFI CARE AND MAINTENANCE

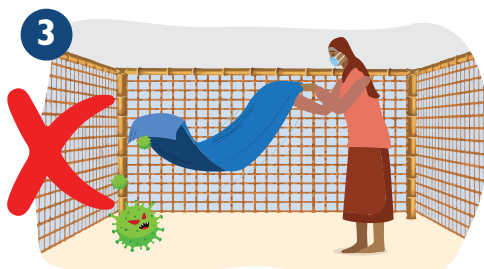
Recommendations to minimize the spread of **COVID-19**



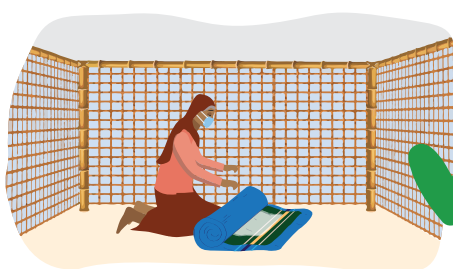
The items you received need to be cleaned before first use and then at least once a week



Before cleaning the items, wear a cloth mask or garment over your mouth and nose



Do not shake the items before washing



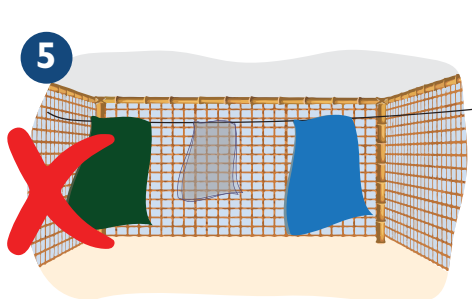
The person that is physically distancing from other family members should not be the one cleaning the items



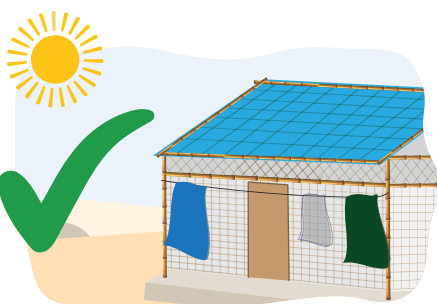
Do not wash the items inside the shelter



Wash the items outside the shelter, close to a drainage channel. Wash the items with soap and clean water. If you do not have soap, wash with clean water



Do not dry the items inside the shelter



Sun dry the items hanging them outside your shelter



You should wash the items at least every week