



Shutsi F. Plan International/UNHCR, 06/2020

## NEEDS ANALYSIS

The need for shelter and NFIs remain present within the affected communities in the crisis in the North West and South West regions of Cameroon.

As informed by UNHCR protection monitoring program, several persons among them women and children were displaced in several villages within Bui, Ngo ketunjia, Ndonga Mantung and Momo divisions in the North West region as they flee violent clashes between None State Armed Groups and the State Defense Forces.

Food, shelter/NFI, medical care are among the most dire items highlighted by the displaced population. Several households have been rendered homeless as their houses and belongings have been destroyed

## RESPONSE

In the NW region, NRC distributed NFI's to 400 households in Bamenda II and Bamenda III Sub-Divisions (150 kits in Bamenda II and 250 kits in Bamenda III). The beneficiaries were sensitized on covid-19 prevention and provided with kits aimed at disease prevention. The NFI on COVID-19 prevention distributed included 4L of household bleach, 2 bars of 250g soap, 1 20L plastic bucket

SHUMAS is assisting 66 persons with rental subsidies in Bamenda and Bui, while 39 persons were also assisted with shelter materials by IVSPD to rebuild their houses destroyed as a result of the crisis.

IOM in its response to vulnerable IDP households in self settled situation assisted 743 individuals with both shelter and NFIs in the North West and 1316 in the South West.

Also, in the South West, UNHCR through Plan International, assisted 4936 persons with emergency shelter in Fako division

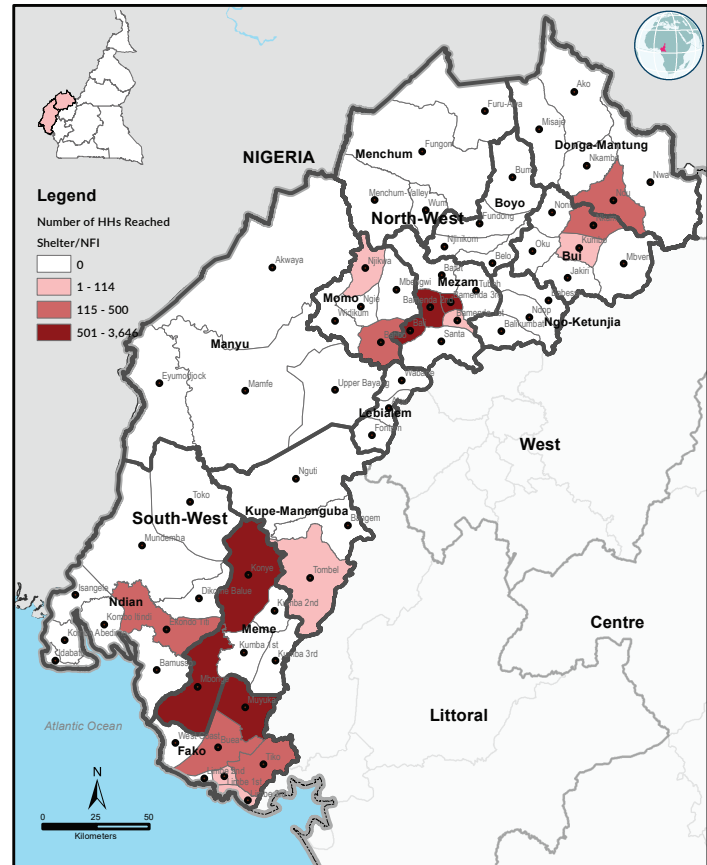
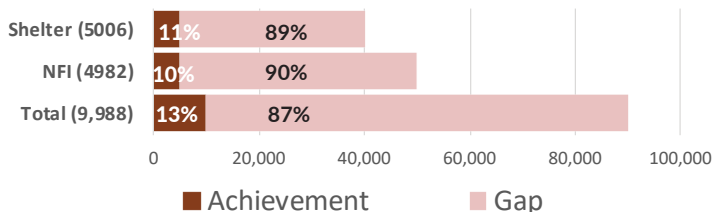
NRC reached 71 individuals with the distribution of household NFIs (The content included Tarpaulins, sleeping mats, blankets, mosquito nets, jerrycans for collecting and storing water).

## GAPS/CHALLENGES

Funding remains a big challenge as only 13% of the targeted household have been reached so far. Partners have complained of lack of funds to meet the needs of the affected communities.

Insecurity is also a challenge as organizations have highlighted roadblocks and lock-downs as elements hindering delivery

### COVERAGE AGAINST TARGETS (HH)



## CLUSTER TEAM

### Shelter Cluster Coordinator

Moussa Fofana (UNHCR)

[fofanamo@unhcr.org](mailto:fofanamo@unhcr.org)

### Shelter Cluster Cofacilitator

Jecinta Mwangeli (NRC)

[jecinta.mwangeli@nrc.no](mailto:jecinta.mwangeli@nrc.no) / +237 685 135 337

### Shelter Cluster IM Associate

Ivo Meh K. (UNHCR)

[mehkum@unhcr.org](mailto:mehkum@unhcr.org) /

[im.cameroon@sheltercluster.org](mailto:im.cameroon@sheltercluster.org); (+237) 699906800

## KEY DATES

On the 17th of October 2018, the Shelter/NFI Cluster was activated for the South-West and North-West regions of Cameroon, together with 7 other clusters, to support the response to the crisis occurring in both these regions. The Shelter/NFI Cluster SW & NW Cameroon is led by UNHCR. The Cluster was established in Buea in October, and a mirror hub was setup in Bamenda, in December 2018

## KEY DOCUMENTS

Shelter/NFI Cluster Strategy

Shelter Cluster NWSW Covid-19 response strategy

Standard NFI/Shelter kits

## KEY LINKS

<https://www.sheltercluster.org/cameroon/documents/>

<https://www.humanitarianresponse.info/en/op%3A9rations/cameroon>

<https://reliefweb.int/country/cmr>

## KEY FIGURES



PEOPLE IN NEED

**351,299**

PARTNERS

**25**

FUNDING

**8%**



PEOPLE TARGETED

**315,214**

UN:

**2**

INGO:

**3**

Local NGO: **20**

Unmet

**\$9.9 M**

**8%**