



Supported by:



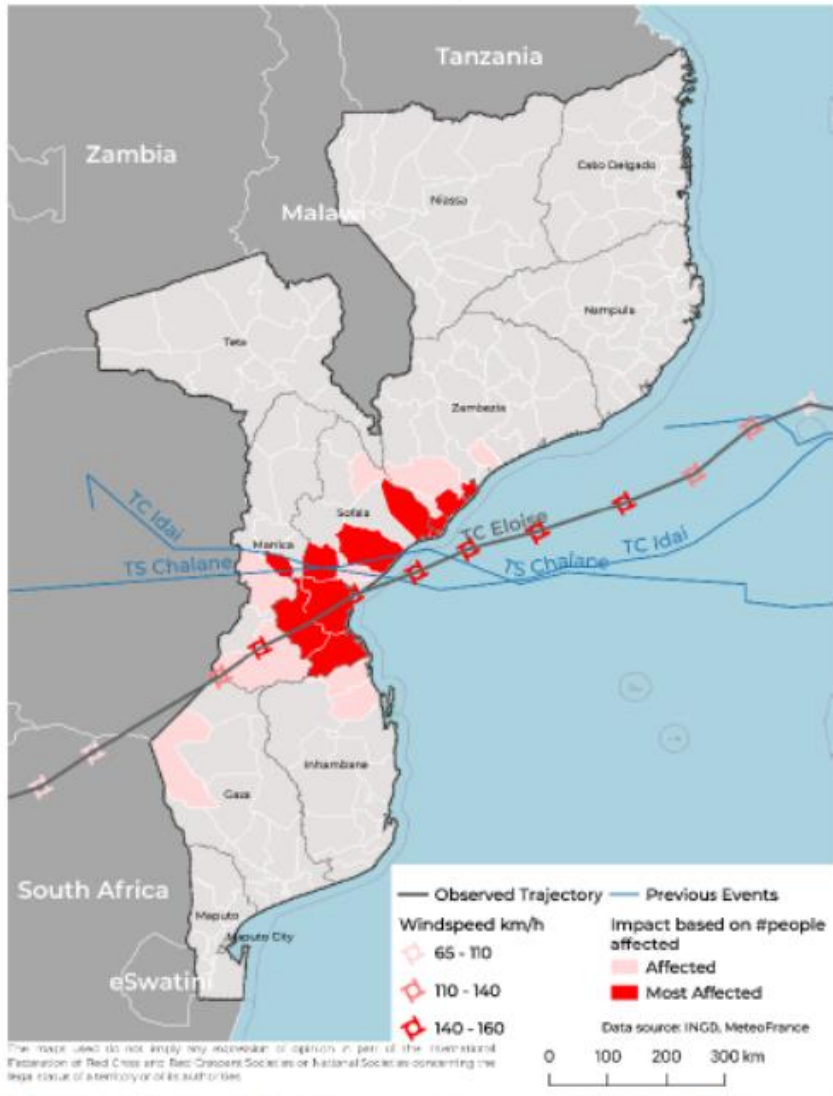
**Mozambique Shelter Cluster**  
ShelterCluster.org  
Coordinating Humanitarian Shelter

**Shelter + NFI Cluster**  
**CENTRAL REGION MOZAMBIQUE**  
**Cyclone Eloise Impact and**  
**Shelter Cluster Emergency Response (Jan-April 2021)**  
**+**  
**Challenges & Gaps**



# CYCLONE ELOISE IMPACT- 23 January 2021

**IFRC** Impact Tropical Cyclone Eloise on Mozambique Districts as of the 10th of February 2021



**Tropical Cyclone Eloise** made landfall on 23 January, 20km south of the Beira City in Sofala Province, **as a Category 2 Tropical Cyclone.**

The National Institute for Disaster Management and Risk Reduction (INGD) on the 8 February confirmed that 86,412 families (441,686 people) were affected in Zambezia, Sofala, Manica, Inhambane and Gaza.

The table below breaks down the impact reported by INGD:

Affected	86,412 families 441,686 people
Displaced People	43,327
Total evacuated People in the last 7 days	34,566
Accommodation Centers (Open)	30 centres 8,035 families 30,856 people
Deaths	7
Injured	15
Houses destroyed	20,798
Houses damaged	35,566
Houses flooded	27,127
Classrooms destroyed	231
Classrooms damaged	514
Health units damaged	68
Impassable roads	63
Flooded Areas (ha)	219,124
Vessels Affected	43
Power poles	135



## BUZI FOOTAGE AFTER CYCLONE ELOISE



# Shelter Cluster Eloise Response Strategy

AIM: \*TO RESTORE DOMESTIC ACTIVITIES AND SHELTER ENCLOSURE FOR THOSE MOST AFFECTED BY CICLONE ELOISE\*

## PRIORITY 1

*February – April 2021*

FACILITATE DE-ACTIVATION OF ACCOMODATION CENTRES AND THE DECONGESTION OF COMMUNAL TENTS (Covid-19), AND SUPPORT THE RESETTLEMENT OF **ALL NEWLY DISPLACED FAMILIES, FROM ACCOMODATION CENTRES + HOSTED AT RESETTLEMENT SITES**, TO INDIVIDUAL PLOTS IN SAFE LOCATIONS, WITH SHELTER KITS + ESSENTIAL NFIS

## PRIORITY 2- A

*March> ONWARDS*

PROVIDE SHELTER ASSISTANCE TO **VULNERABLE** FAMILIES WITH DESTROYED/ DAMAGED EMERGENCY SHELTERS IN EXISTING IDAI RESETTLEMENT SITES  
**(45% of Idai RS HHs affected)**

## PRIORITY 2- B

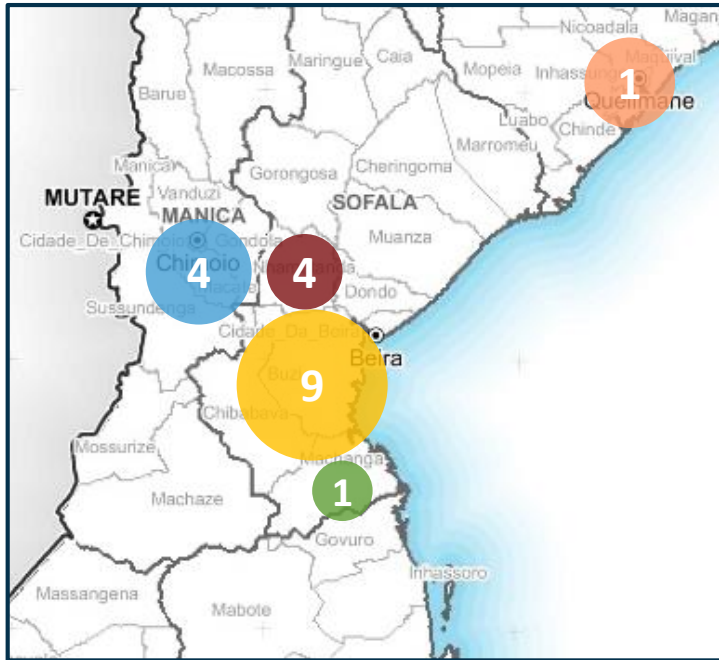
*March> ONWARDS*

ASSIST **VULNERABLE** NON-DISPLACED FAMILIES WITH SHELTER KITS/ SHELTER MATERIAL AND SUPPORT TO REBUILD/ ENCLOSE THEIR DAMAGED/ DESTROYED HOMES



# CYCLONE ELOISE SHELTER CLUSTER PARTNERS

11 SHELTER/  
NFI  
PARTNERS



- CARE
- CEDES
- CVM/ IFRC
- FOOD FOR THE HUNGRY
- GOOD NEIGHBOURS
- IOM
- SOLIDAR SUISSE
- SAVE THE CHILDREN
- TZU CHI FOUNDATION
- UNHCR
- WORLD VISION

Intervention Areas by partner:

- BUZI
- NHAMATANDA
- MANICA
- ZAMBEZIA
- MACHANGA

# Shelter Cluster Eloise Response Strategy- PRIORITY 1



FAMILIES  
DISPLACED BY  
ELOISE IN  
ACCOMODATION  
CENTRES UNABLE  
TO RETURN  
HOME> TO BE  
RESETTLED

*February – April 2021*

**FACILIAE DE-ACTIVATION OF  
ACCOMODATION CENTRES AND THE  
DECONGESTION OF COMMUNAL  
TENTS (Covid-19), AND SUPPORT  
THE RESETTLEMENT OF ALL NEWLY  
DISPLACED FAMILIES, FROM  
ACCOMODATION CENTRES +  
HOSTED AT RESETTLEMENT  
SITES,  
TO INDIVIDUAL PLOTS IN SAFE  
LOCATIONS, WITH SHELTER KITS +  
ESSENTIAL NFIS**



FCDO pre-  
positioned Family  
tents deployed in  
immediate  
aftermath of Eloise  
in Idai allowed  
partners time to  
get funding and  
procure materials  
locally

LATER:  
DECONGESTION  
OF  
ACCOMODATION  
CENTRE  
COMMUNAL  
TENTS (COVID 19)

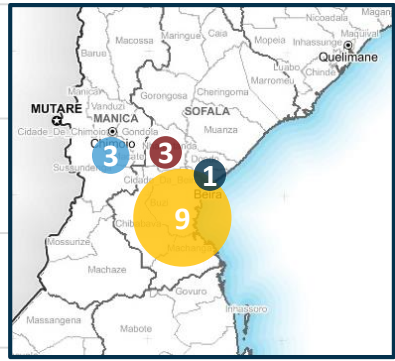
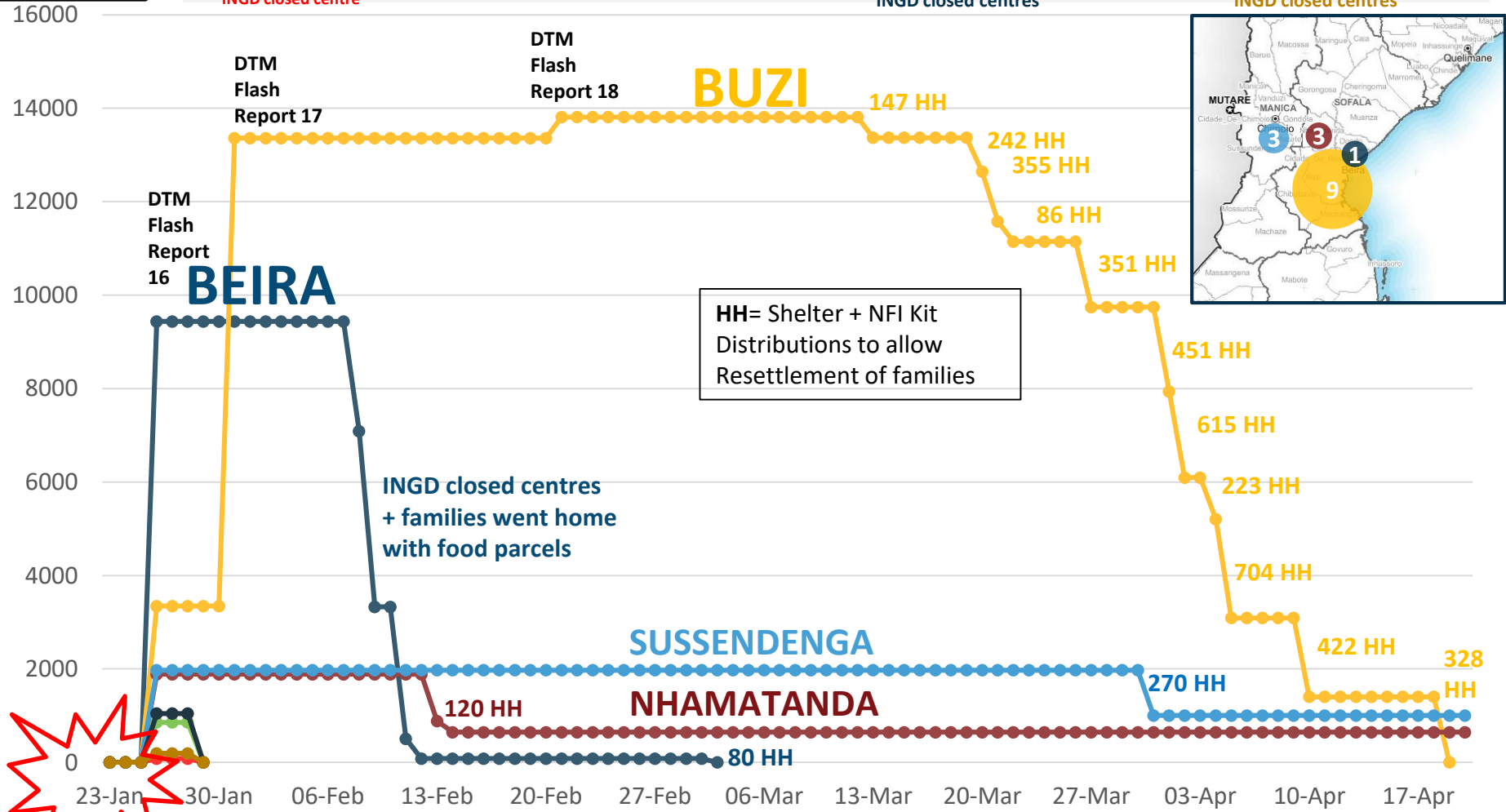


FAMILIES  
DISPLACED BY  
ELOISE HOSTED  
IN  
RESETTLEMENT  
SITES  
(Not close to an  
accommodation  
centre)

# Shelter Cluster Eloise Response Strategy- PRIORITY 1

**NUMBER OF PEOPLE**

- BEIRA
- BUZI
- NHAMATANA
- MACHANGA
- CAIA
- SUSSENDENGA
- MOSSURIZE
- INGD closed centres
- MACHAZE+MACATE
- INGD closed centres



**CYCLONE ELOISE**

**CYCLONE ELOISE  
ACCOMODATION CENTRES  
DEACTIVATION**

# Shelter Cluster Eloise Response Strategy- PRIORITY 1

Cyclone Eloise necessitated the creation of 5 new resettlement sites and the extension of 8 existing resettlement sites, with plots for 6736 new families, for the newly displaced

**(An overall increase of 35% from Idai)**

## NEW CYCLONE ELOISE RESETTLEMENT SITES:

### **BUZI: 3924HH Resettled**

- Guara Guara 2021 (2950 plots)
- Bandua 2021 (998 plots)
- Inharongue (416 plots)
- Bopira (158 plots)
- Mussinemue (170 plots)

### **MANICA: 427HH Resettled**

- Nhamissisua (64 Plots)
- Maquina (270 plots)
- Muwawa (93 plots)
- 4 Octobro (89 plots- pending)

### **NHAMATANDA: 120HH Resettled**

- Ndeja (120 plots)
- Metuchira (808 plots)
- Chadeia/Djenja 1 (202 plots)
- Muda Sede (318 plots)

### **DONDO: 80HH Resettled**

- Mutua (80 plots –Abandoned sites reused)

**6736 new plots (Ongoing)**



**GUARA GUARA 2021 – 2950 NEW PLOTS**

# Shelter Cluster Eloise Response - PRIORITY 1- NEWLY DISPLACED

## SHELTER ITEMS DISTRIBUTED

- Shelter kits (toolkit+ 2 tarps) = 5029HH  
*+127HH Manica planned-May*
- Tarps only= 80HH
- Toolkits only= 3949HH
- CGI Sheets and Toolkits (to Eloise Displaced)= 270HH

## NFIs DISTRIBUTED

- Blankets (By partners) for 2059HH
- Solar Radio lamps for 1834 HH
- Kitchen sets for 5342HH
- Jerry cans (Reported to SC- Also see WASH reporting) for 1954HH
- Sleeping mats for 768HH

## REPLENISHMENT OF STOCKS/ STOCK AVAILABLE TOP INGD:

- 6000 Tarps (IOM>INGD Sofala)
- 2500 Tarps (IOM>INGD Zambesia – 1500 Chinde, 200 Luabo, Mopeia 220, Inhassunhe 580)
- 3000 Tarps (IOM>INGD Manica – 400 Chimoio, 450 gondola, Sussendenga 650, Mossurize 650, Macata 650)
- ~1000 Kitchen Sets (total donation of 3500) (CEDES> INGD Sofala)

**Partners:** CARE, CEDES, CVM/ IFRC, CVM/ German Red Cross, FOOD FOR THE HUNGRY, GOOD NEIGHBOURS, IOM, SOLIDAR SUISSE, SAVE THE CHILDREN, TZU CHI FOUNDATION, UNHCR, WORLD VISION

[LINK TO OCHA REPORTING TOOL \(Source of Info. Above\)](#)



# Shelter Cluster Eloise Response Strategy- PRIORITY 2A – IDAI RS REPEAT AFFECTED



**73 resettlement sites**  
64 sites affected by Cyclone Eloise



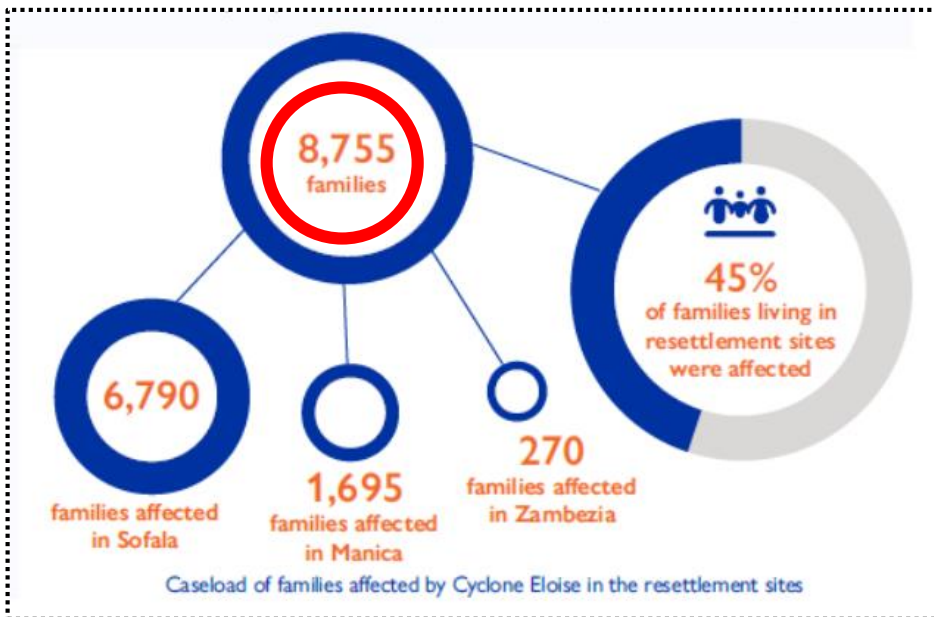
**19,505 IDP households**  
8,755 households affected by Cyclone Eloise in the resettlement sites



**93,392 IDPs**

As of December 2020 (Source: DTM Site profiles), just prior to Cyclone Eloise, **92,749 persons** were living in resettlement sites and most still continued to live in versions of Cyclone Idai temporary emergency shelters, now degraded.

When Eloise hit on 23<sup>rd</sup> January 2021, 45% of these same families which equates to **8755HH**, of which **2,310 are vulnerable families** (Source: IOM vulnerability assessment) i.e. female and child headed households, elderly and chronically ill living alone or caring for minors, reported damages to or complete destruction of their Idai emergency shelters.



March- June 2021

**PROVIDE SHELTER ASSISTANCE TO VULNERABLE FAMILIES WITH DESTROYED/ DAMAGED EMERGENCY SHELTERS IN EXISTING IDAI RESETTLEMENT SITES (45% of Idai RS HHs affected)**

### SC Response Summary:

**1 tarp + toolkit- 188HH (WV)**

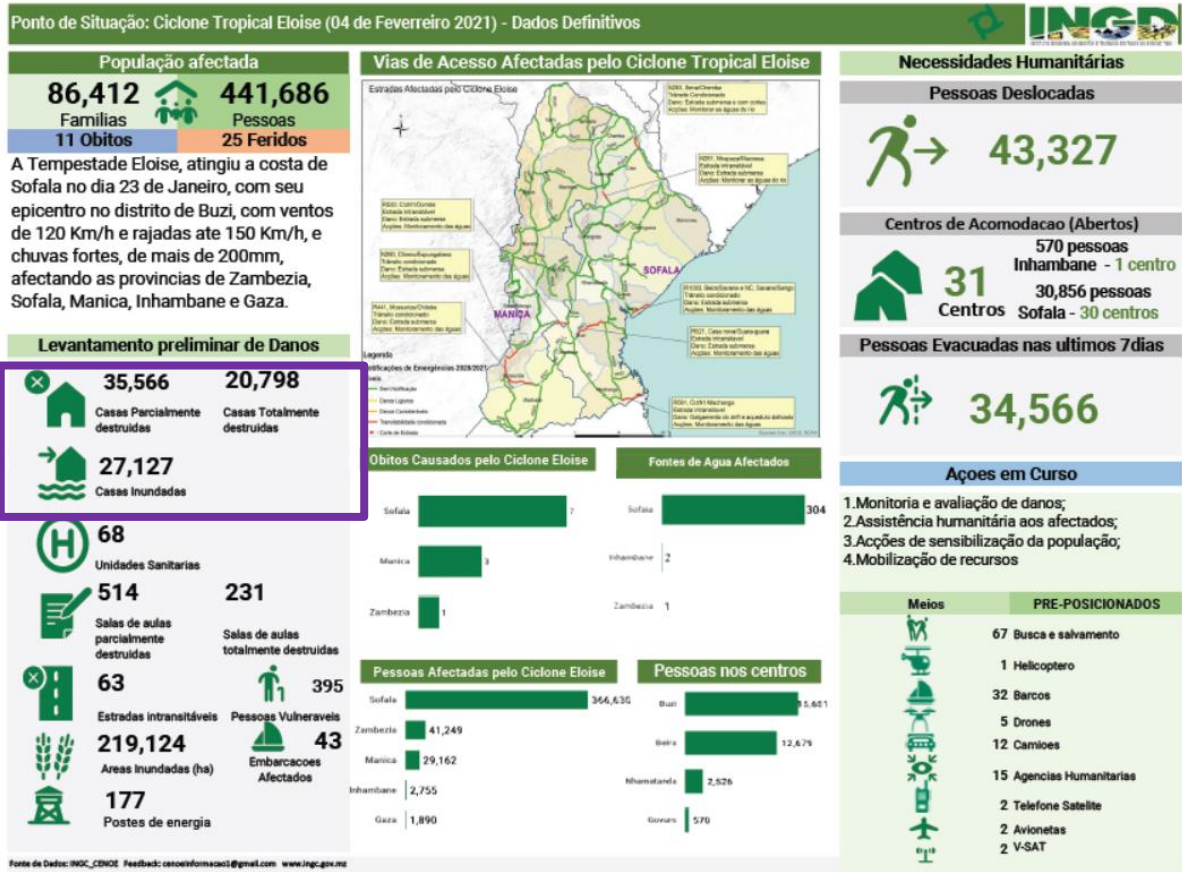
**Roof Repair kits- 1345HH COMPLETE + 1385HH PLANNED(IOM)**

**Roof Repair Kits- 318HH COMPLETE (CVM)**

**Partners:** CVM/ German Red Cross, IOM, WORLD VISION



# Shelter Cluster Eloise Response Strategy- PRIORITY 2B- Non-Displaced



ASSIST THE **MOST VULNERABLE** NON-DISPLACED FAMILIES WITH SHELTER KITS/ SHELTER MATERIAL AND SUPPORT TO REBUILD/ ENCLOSE THEIR DAMAGED/ DESTROYED HOMES



>Families evacuated temporarily and built shelters on higher ground from local grasses/old tarps and returned later to their damaged/ destroyed houses. (Nhamatanda District)

**FROM THESE REPORTED DAMAGED HOUSES TOTALS:**

- >Some families sought assistance at one of the 30+ accommodation centres across the region.
- >Others evacuated directly to existing resettlement sites with their old tarps and materials and requested plots, to resettle
- >In other cases (eg. Bopira, Mussinemue, Inharongue in Buzi) whole communities evacuated from their community location of origin and created informal 'accommodation centres' themselves on higher ground and collectively requested a new resettlement site/ community location for their whole community to move to.
- >Others evacuated temporarily and built shelters on higher ground from local grasses/old tarps and returned later to their damaged/ destroyed houses.(See photos opposite)

# Shelter Cluster Eloise Response Strategy- NON-DISPLACED RESPONSE



## NON-DISPLACED HHs RESPONSE:

### SHELTER ITEMS:

-Roof Repair Kits- **609HH** (CVM)

-2 Tarps and toolkits:

**1000HH Zambezia** (CVM)

+ **525HH Planned Machanga** (CVM)

**1 tarp + toolkit- 400HH** (WVI)

### NFIs:

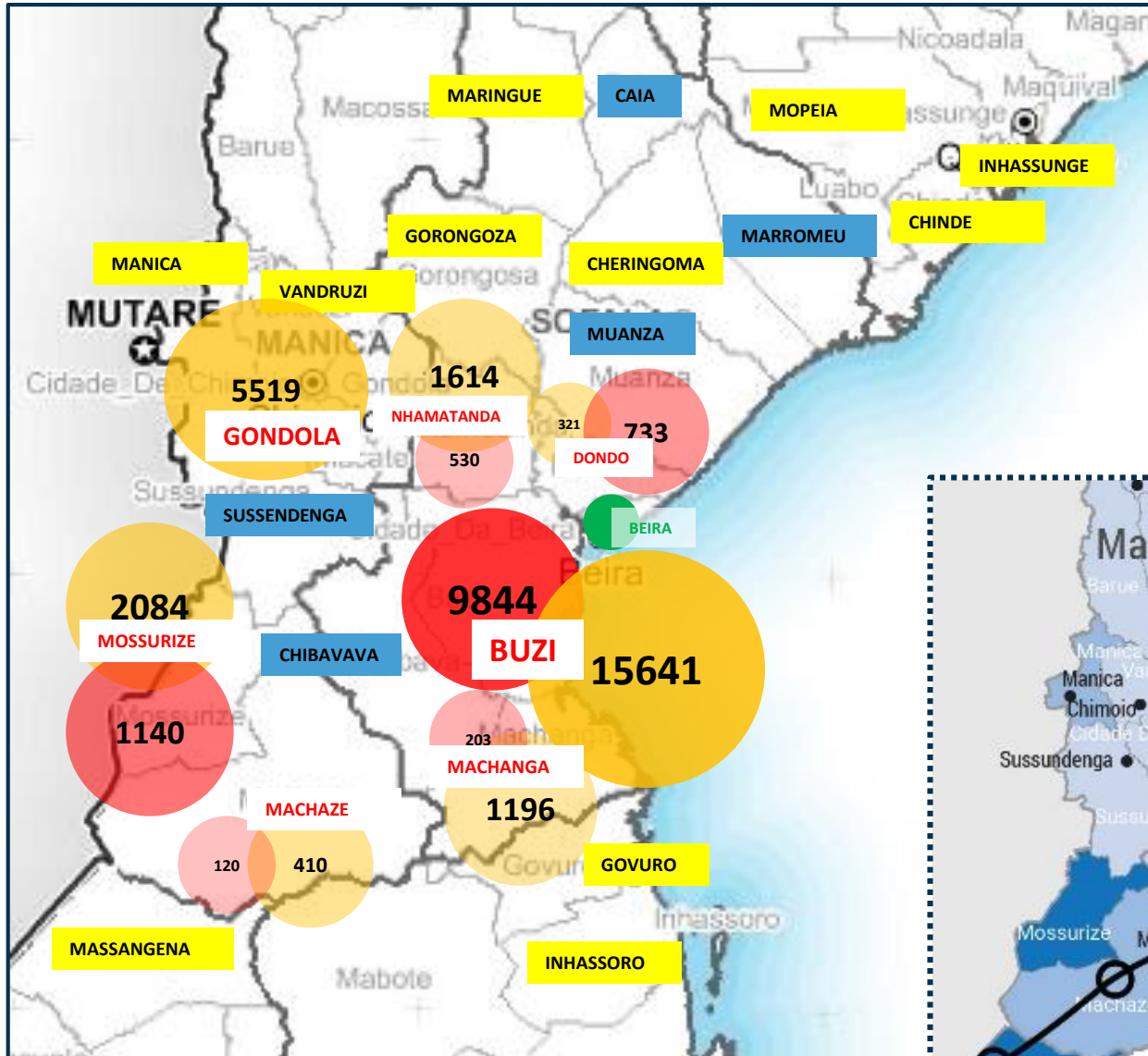
**525HH Planned Machanga**(CVM)

**1200HH Kitchen Sets-Planned Muanza**(Care)

**Partners:** CVM/ IFRC, CVM/ German Red Cross, WORLD VISION



# Shelter Cluster Eloise Response Strategy- NON-DISPLACED NEEDS



- XX DAMAGED HOUSES (MSA)
- XX DESTROYED HOUSES (MSA)
- FORMED PART OF OCHA MSA BUT NO DAMAGED/ DESTROYED HOUSES REPORTED (ONLY FLOODED)

SEE DTM MAP FOR INFO

AFFECTED DISTRICT BUT DATA UNAVAILABLE



Data on damaged/ destroyed houses: MSA (Multi Sectoral Assessment), OCHA + Partners

# Shelter Cluster Eloise Response Strategy- NON-DISPLACED NEEDS

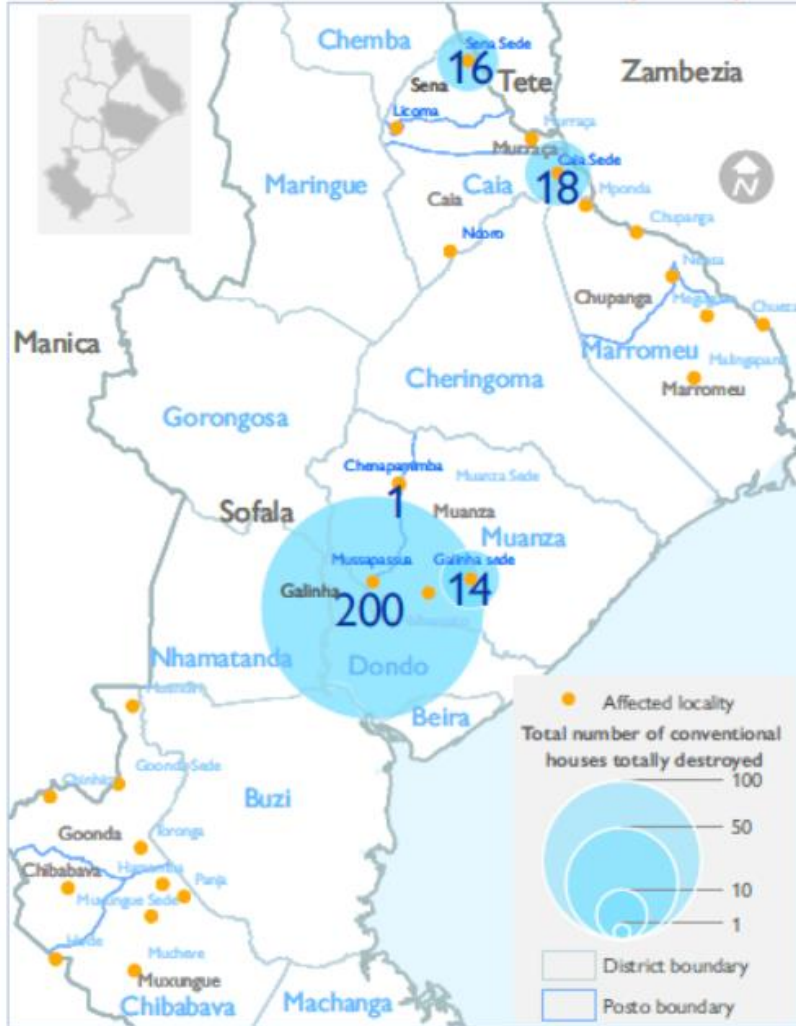


**Shelter Cluster Mozambique**  
ShelterCluster.org  
Coordinating Humanitarian Shelter

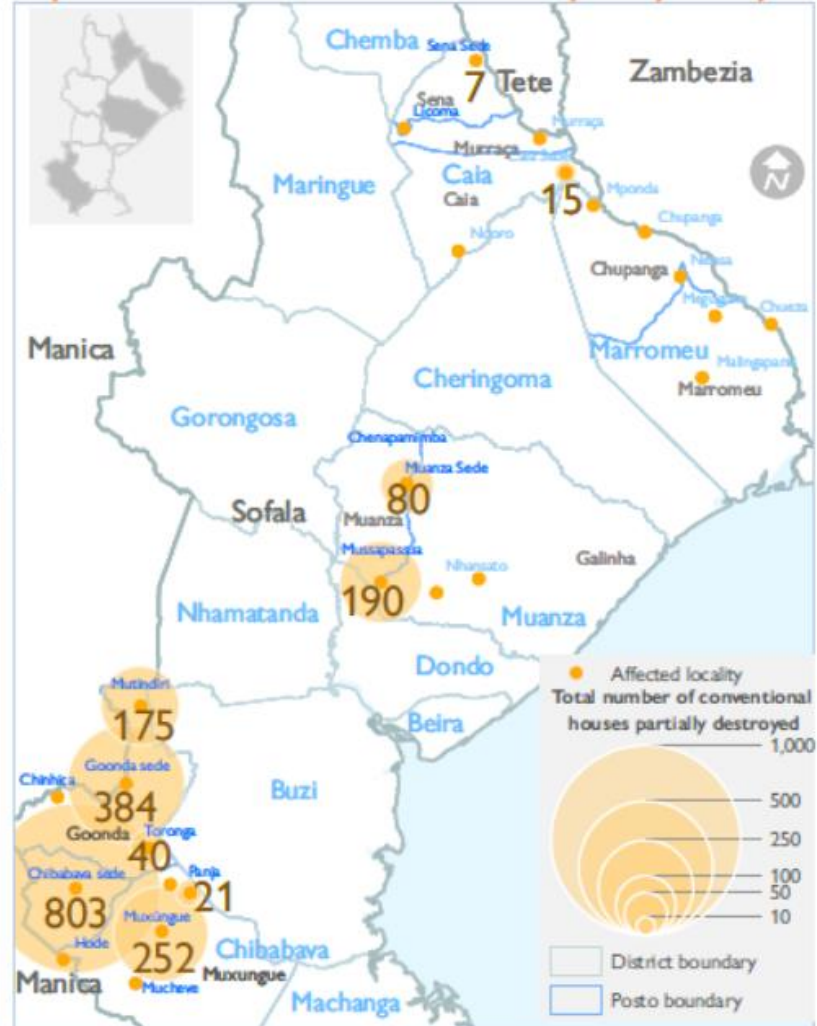
## Shelter Conditions in the Aftermath of Tropical Cyclone Eloise In Caia, Chibabava Marromeu, And Muanza Districts

April 2021

**Map 1: Total number of conventional houses totally destroyed**

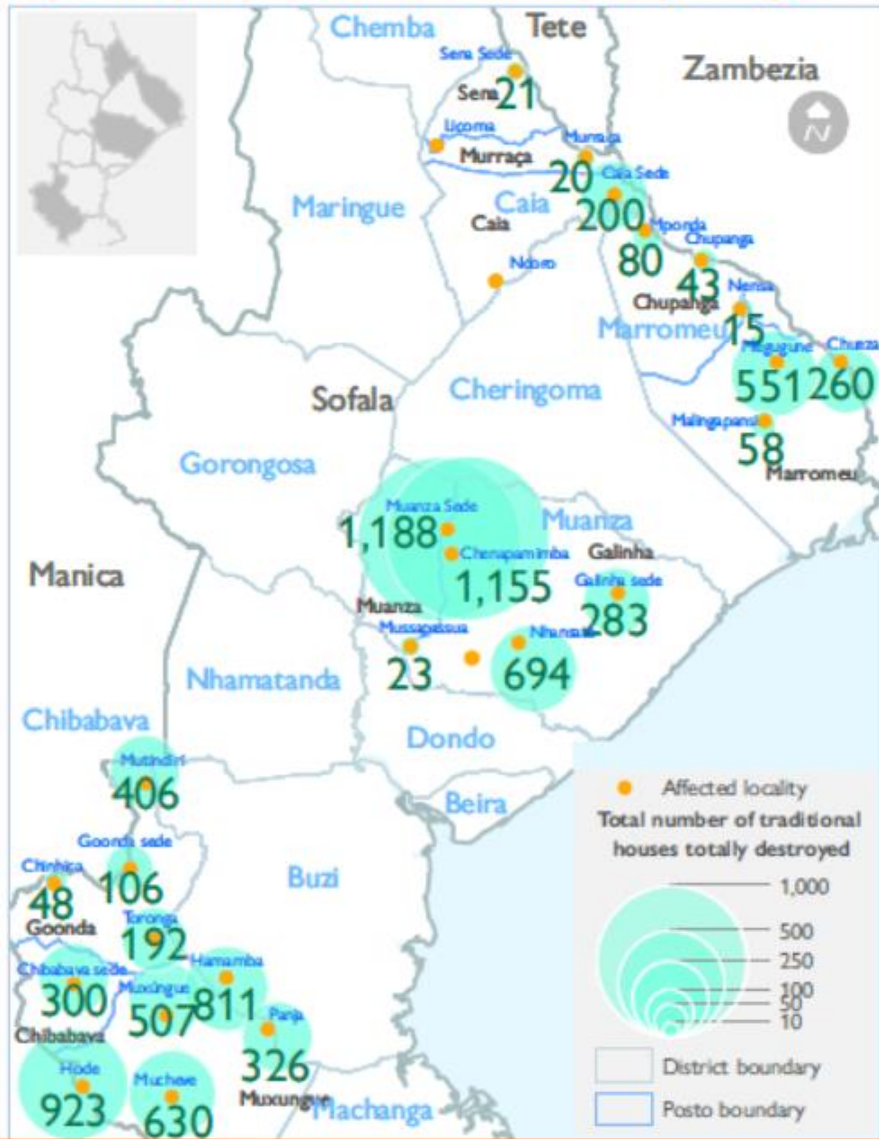


**Map 2: Total number of conventional houses partially destroyed**

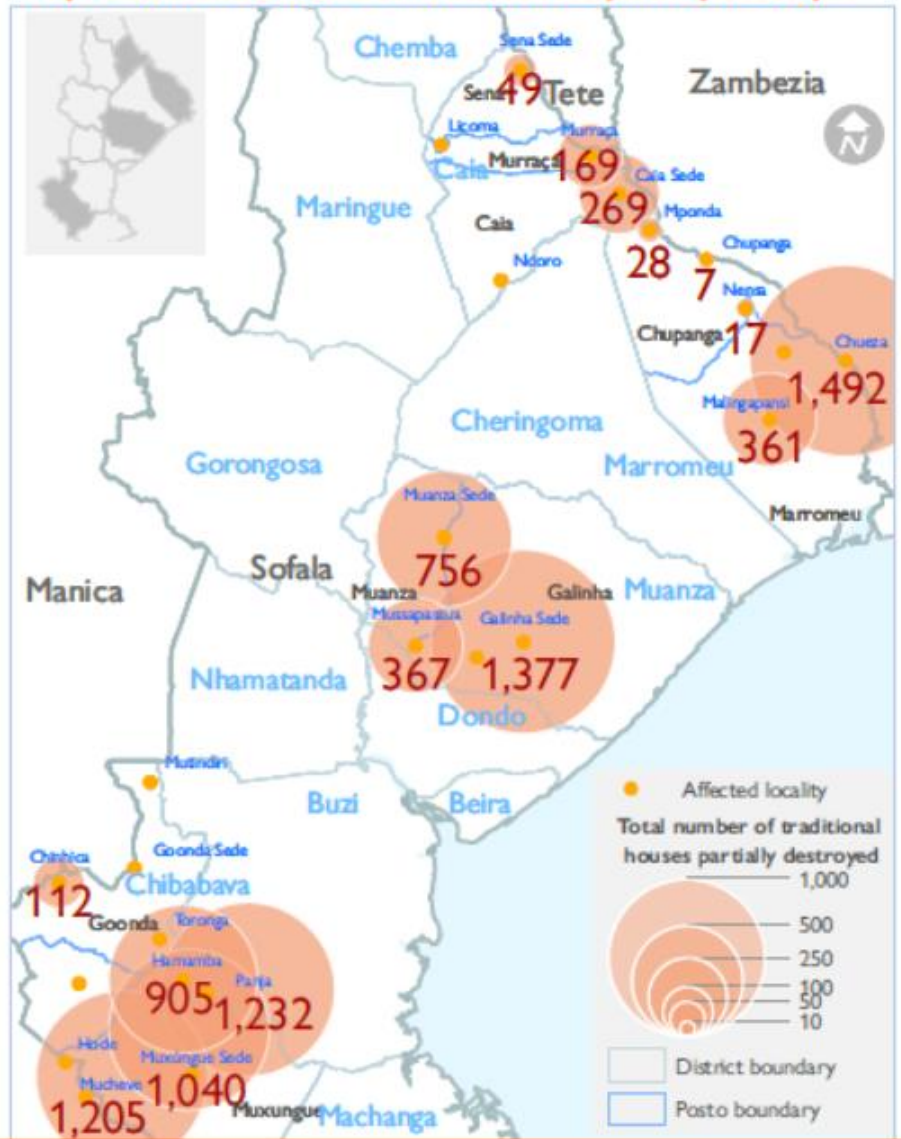


# Shelter Cluster Eloise Response Strategy- NON-DISPLACED NEEDS

Map 3: Total number of traditional houses totally destroyed



Map 4: Total number of traditional houses partially destroyed



**PRIORITY 1- Newly Displaced**

- Lack of **advance warning** on deactivation of AC's by INGD
- **Local procurement** was slow, difficult and the quality of some tarps was low and they were very expensive
- Lack of availability of stainless steel kitchen sets in country
- **Lack of tarps available in partners stocks** (pre-positioning low pre-Eloise)
- Delays caused by confusion around **'return packages'** to include 2 tarps for all families in Beira originally (*Finally return packages only included food + hygiene kits*)
- **Access** to some accommodation centres remained difficult well into March
- Due to partners using up stocks and some partners working directly with government **NFI compositions and toolkit compositions varied**
- **Delays in demarcation** of new plots and allocation of land for families
- **Lack of technical assistance** with building shelters, especially for the most vulnerable
- **Lack of reporting** to cluster (One instance of duplication of 120 HH)
- Partners wishing to work in specific areas where they had organizational connections as opposed to where needs were

**PRIORITY 2A -IDAI RS. REPEAT**

- **Lack of appetite** to replenish Idai emergency shelters (eg. new tarps)
- **Lack of funding available**
- INGD understandably use tarp stocks sparingly and do not replenish old tarps, no matter in what condition they are after 2+ years
- Low interest from some local government in giving these families tarps/ building materials (due to bad prior experiences) and many are now only requesting/accepting **permanent housing solutions.**

**PRIORITY 2B- Non.Displaced**

- Lack of funding available
- Late release of Multi sectoral assessment did not help Eloise partners to be able to focus on these needs
- Lack of government focus (up until April) on these families, as focus was on accommodation centre deactivation and resettlement
- Lack of detailed information on needs and what would actually assist these families (**Awaiting DTM shelter recovery assessment- ONGOING**)
- Gap in information about some districts entirely
- Considerably higher cost in assisting families in hard to reach areas
- Access roads in some locations make reaching these areas very difficult

**PRIORITY 1- Newly Displaced**

- Shelter kits for this group were covered 98% by partners + some by INGD (**NO GAPS**)

**NFI GAPS/ URGENT NEEDS:**

- Protection cluster highlighted that due to lack of electricity in new resettlement sites, at night there are protection concerns and families **need torches URGENTLY**

**PREPOSITIONING GAPS**

- Family tents prepositioned in 2020 were used successfully by INGD throughout the response communally. (Next year?)
- Prepositioning of tarps, toolkits and essential NFIs needed given stocks have now been depleted (INGD have been donated tarps by IOM)

**NB:**

- **4551 HH Newly Resettled by Eloise now adding to the resilient shelter need caseload in RS. (Duats needed)**

**PRIORITY 2A -IDAI RS. REPEAT**

- No gap in information as DTM prepares excellently detailed site profiles of all 73 Idai resettlement sites (*\*Except for Eloise impact on Conflict related resettlement sites in Central Region: DTM Report Nov.2020*)

- **AFFECTED: 8755HH** affected living in emergency shelters since Idai were affected by Eloise

- **ELOISE RESPONSE 2A: 3236 HH assisted/planned**

- **GAP: ~5519 HH\*** in Need of Shelter Support in Idai Resettlement Sites

**NB:**

- **There is a huge gap between organizations'/ government's / families capacity to build permanent/resilient housing and the high numbers of families still living in emergency shelters since Idai, not to mention the new families who have resettled following Eloise.**

**PRIORITY 2B- Non.Displaced**

- Lack of partners with capacity to undertake necessary assessments and take on the logistical challenges with this group  
**\*CAUTION NOT TO ASSIST THOSE IN RISK AREAS\***
- *Note that most Cyclone Idai ongoing permanent housing projects do not work with these communities*

- **AFFECTED:**  
35,566 HOUSES DAMAGED (INGD)  
20,798 HOUSES DESTROYED(INGD)  
**=56,364\*** HOUSES TOTAL AFFECTED

\*Of which:  
**4551HH WERE RELOCATED(Group1)**  
**ELOISE RESPONSE 2B: 2534HH**

- **GAP: ~49,279HH**

**NB:**

- **The baseline of housing quality in Mozambique is extremely low to begin with, which is why identifying who to assist and identifying who was affected by which climatic event is extremely difficult.**