



Shelter & NFI monthly meeting

8 December 2021

1. Introduction

2. Updates from the Partners – UNHCR, NRC, DRC, CEFA

3. Update from Sector, incl. HRP, outstanding needs requests

- General Sector workplan
- Strategic Workstreams
- Ongoing support requests from East, West and South
- Sector preparedness work
- Proposed changes to NFI package



2. PARTNER UPDATE



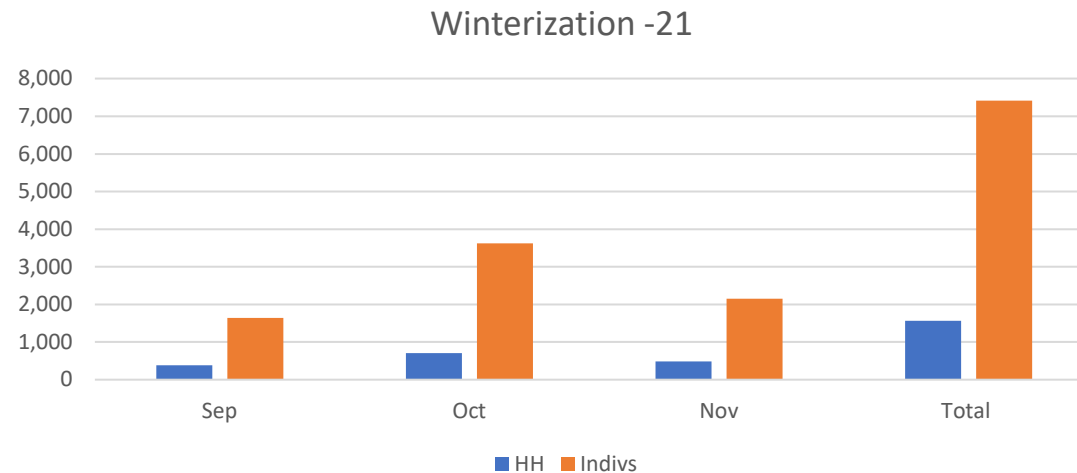
During Nov-21, UNHCR managed to reach 481 HH, 3,153 individuals (IDPs and Refugees).

Out of the total reached, 2,153 IDPs were provided with winter-kit in Misrata, Khums, Zliten, and IDP camps in Greater Tripoli.

Up to 1000 refugees and asylum seekers were provided with NFIs through outreach/home-visits distribution and local NGOs and at the DPs were 500 survivors provided with blankets and refreshments.

Winterization: so far Total of 1,566 HH and 7,415 individuals reached in East, Central, and Tripoli regions.

Mainly targeted IDP communities (Tawergha and Murzuq).



2. PARTNER UPDATE

NRC- Shelter updates

Projects with partnership of UNHCR:

All projects have been completed:

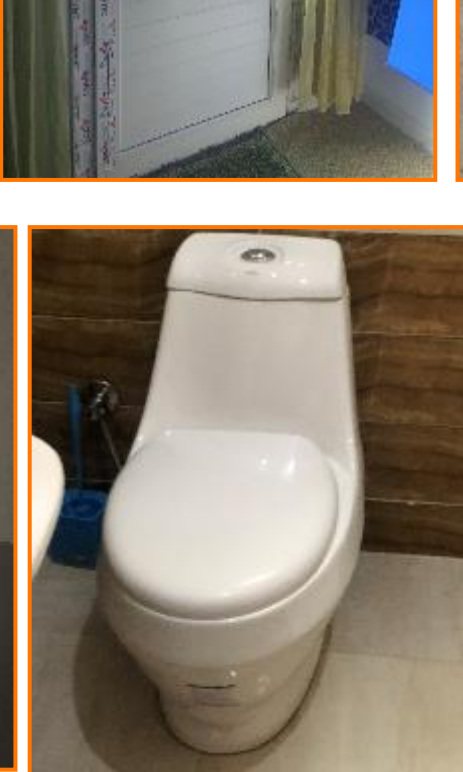
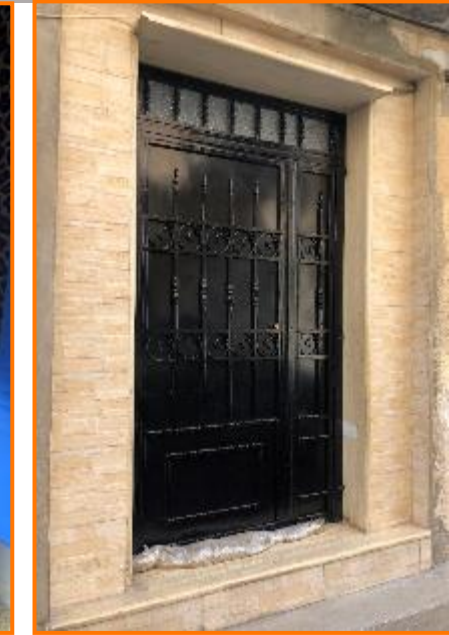
1. Rehabilitation and upgrade of 2 infrastructure projects in Sidi Faraj and Garyounis camps, Benghazi.
2. Rehabilitation of 30 shelter units in Al Hilles camp, Benghazi.
3. Rehabilitation and upgrade of 65 sub-standard and damaged housing units in Al Sabrie , Benghazi.
4. Rehabilitation and upgrade of 3 infrastructure projects in Abu Salim, Tripoli.
5. Rehabilitation and upgrade of 17 housing units in Benina.

Projects charged to other donors:

1. Rehabilitation and upgrade of two health centers in Al Hadba and Mashroe Zerae- Tripoli; work is completed.
2. Rehabilitation and upgrade of 55 sub-standard and damaged housing units in Gymmenis and Benina: work is ongoing and expected completion date is next week.
3. Rehabilitation of housing units – Tripoli:
 - a. First batch of 69 houses: work will be completed next week.
 - b. Second batch of 65 houses: technical documents are completed, work will start next week.
4. Rehabilitation and upgrade of 2 infrastructure projects in Tripoli and Benghazi: work is ongoing and expected completion date is next week.
5. Cash for shelter rehab- Tawergha: cash distribution of first instalment for 60 HHs is done, second instalment will be distributed next week.



Housing Rehab Projects (Before and After)



Infrastructure upgrading in Camps

Temporary Road



Communal Lighting



4. PARTNER UPDATE

DRC

- **Ongoing activities:**

- **Sidi Alsayah- IDPs site (34HH):**

- **Shelter materials:** Delivered to 34 HH. **(In November 2021)**
- **NFIs assistance: assessment completed** -> 34HH are in need for NFIs assistance -> distribution to be taken place by 3rd week of December 2021.

- **Ain Zara IDPs site:** (Ain Zara IDPs site-Aljdida) referred by Ain Zara municipality – 19HH

- **Shelter materials:** 2 HH supported with Shelter materials. **(In November 2021)**
- **NFIs assistance:** 7 HH feasible for assistance -> distribution activities to take place by 3rd week of December 2021.

- **Ain Zara Returnees families:** Total families been assessed 44HH while 37HH been selected.

- **Shelter materials:** 37HH out of 44HH been selected, materials distribution is ongoing. **(In November, 14 HH assisted)**
- **NFI assistance:** 27HH out of 44HH been selected, assistance distribution planning is ongoing

- **Soug Alahad IDPs site (60 HH):**

- DRC Safety Clearance process completed, next step to coordinate with Tarhuna Municipality for the accessing/coordination purpose.



4. PARTNER UPDATE

DRC

- **Murzug IDPs population (60HH):**

- **NFI assistance:** The families list been received by OCHA, assessment phase will take place in the 2st week of December 2021.

- **Mix migrants Sites:** DRC is thinking to re-consider those identified sites due to stable condition been experienced.

- (3) sites in **Soug Aljoma** been considered for support (rehab + S/NFIs). Technical assessment is completed. Site

populations as follows : S1=65 IND, S2=13 IND, while S3= 33 IND. Referred by IRC. DRC will prioritize the NFI assistance at this stage.

- **Pre-positioning S/NFI Kits:**

- **NFI assistance:** DRC – Shelter should be able to have S/NFI kits in stock for 70 HH (IDPs) and 100 IND (Migrants) by Med -Dec 2021



2. PARTNER UPDATE



Distribution activities of FI Kit, Hygiene Kit and PPE in Zawiya: on November 22nd, 23rd, 24th, 25th, second distributions of FI Kits, Hygiene Kits and PPE took place in 4 different districts of the municipality of Zawiya: Juddaim, Arewie, Khartoum/Bu Ghalasha, Terfas. **140 Hygiene Kits, 140 PPE Kits and 140 FI Kits** have been distributed to **140 HHs** for the benefit of up to **350 beneficiaries** among **migrants, refugees and asylum seekers**.

Distribution Area	Hygien Kit			PPE		Food		Total
	Family Kit	Male Indiv. Kit	Female Indiv. Kit	Family Kit	Individual	Family Kit	Individual	
Juddaim	10	7	1	10	8	10	8	54
Arewie	29	14	12	29	26	29	26	165
Bu Ghasha/Kartour	22	8	5	22	13	22	13	105
Terfas	3	29	0	3	29	3	29	96
Total	64	58	18	64	76	64	76	420
	140			140		140		








2. PARTNER UPDATE



Updates from any other partners?



3. SECTOR UPDATE

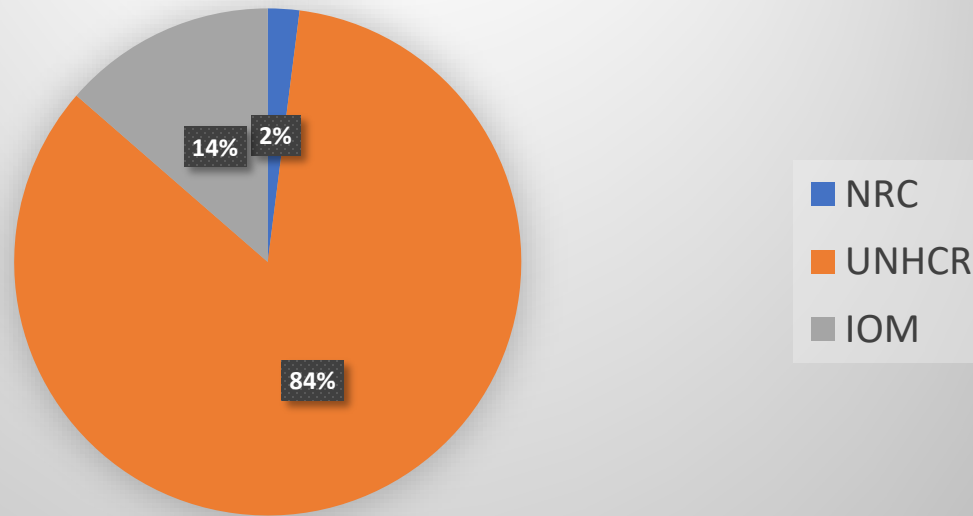
					
('000s)	IDPs	Returnees	Non-displaced	Refugees	Migrants
2021 Population	392	494	6,418	46	538
2021 PiN	58	82	107	46	82
2021 Target	30	39	10	10	22
2021 Progress (10 months)	48 (+2)	5 people	2 (+0)	28 (+2)	55 (+4)
% of target reached against target and (PiN)	160% (82%)	0% (0%)	20% (2%)	280% (61%)	250% (67%)



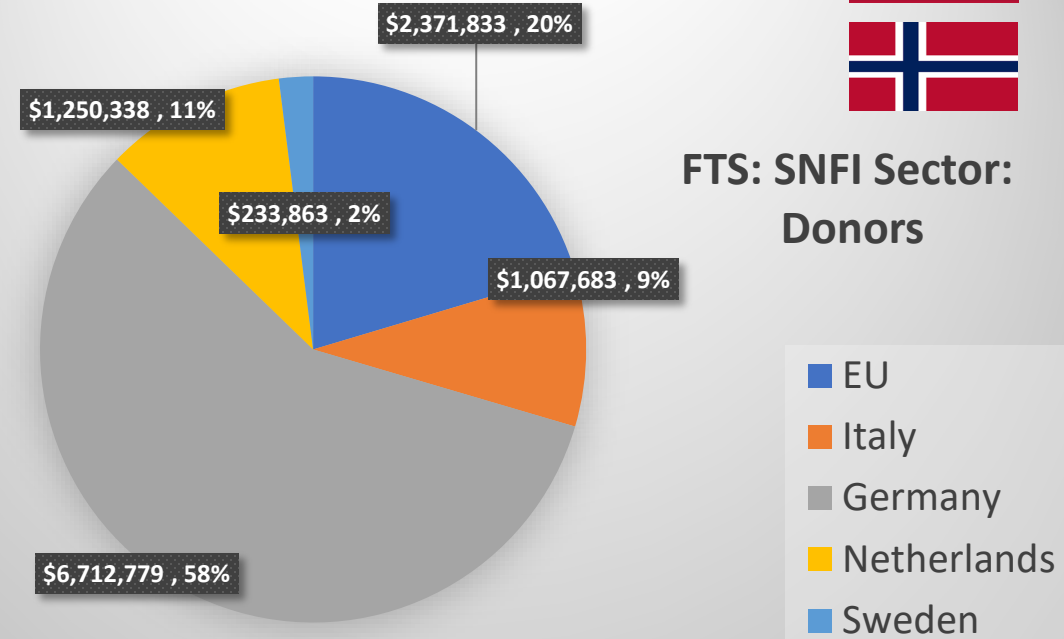
3. SECTOR UPDATE

Total funding received - \$11.85M from an ask of \$13.1 – 90%

FTS: SNFI Sector: Partners



FTS: SNFI Sector: Donors



https://fts.unocha.org/appeals/1027/flows?order=flow_property_directional_2&sort=asc

- 61% of its 2021 HRP portfolio is **Essential Household Items**
- 34% of the sector’s work is focused on providing **adequate housing**
- 5% for **public buildings and infrastructure**.



3. SECTOR UPDATE

- **Tawergha:**

- UNHCR is planning a plastic sheeting and winterization plan distributions – within two weeks

- **Tarhouna:**

- UNHCR has processed 34 Tawerghan IDP HHs in Atib Settlement
- 240 Libyan widows and divorcees HHs -
- Pending assistance: Tawergha IDPs in Souq Al-Ahad Camp 60 HHs & 31 IDP HHs

- **Harawa:**

- Joint distribution between UNFPA and UNHCR (CRIs and Hygiene kits)

- **Tragan Municipality:**

- Pending assistance: 126 HHs migrants from Sudan, Palestine, and Egypt.
- Pending assistance: 396 HHs host community.



3. SECTOR UPDATE

- **Gheryan:**
 - IOM is assessing the needs of 700 HHs (Libyan families)
- **Murzuq IDPs in the West:**
 - East and West of Tripoli – covered by UNHCR
 - Greater Tripoli 597 HHs – 60 HHs DRC / 537 HHs UNHCR
- **Murzuq IDPs in the South:**
 - Request for 130 HHs in Sabha: IOM currently assessing their needs
- **Zawia – Host community:**
 - Pending assistance: 254 HHs of widows, divorcees, and Libyan women married to non-Libyans.
- **Zawia – IDPs:**
 - Request to assist 1024 HHs – UNHCR to cover this group

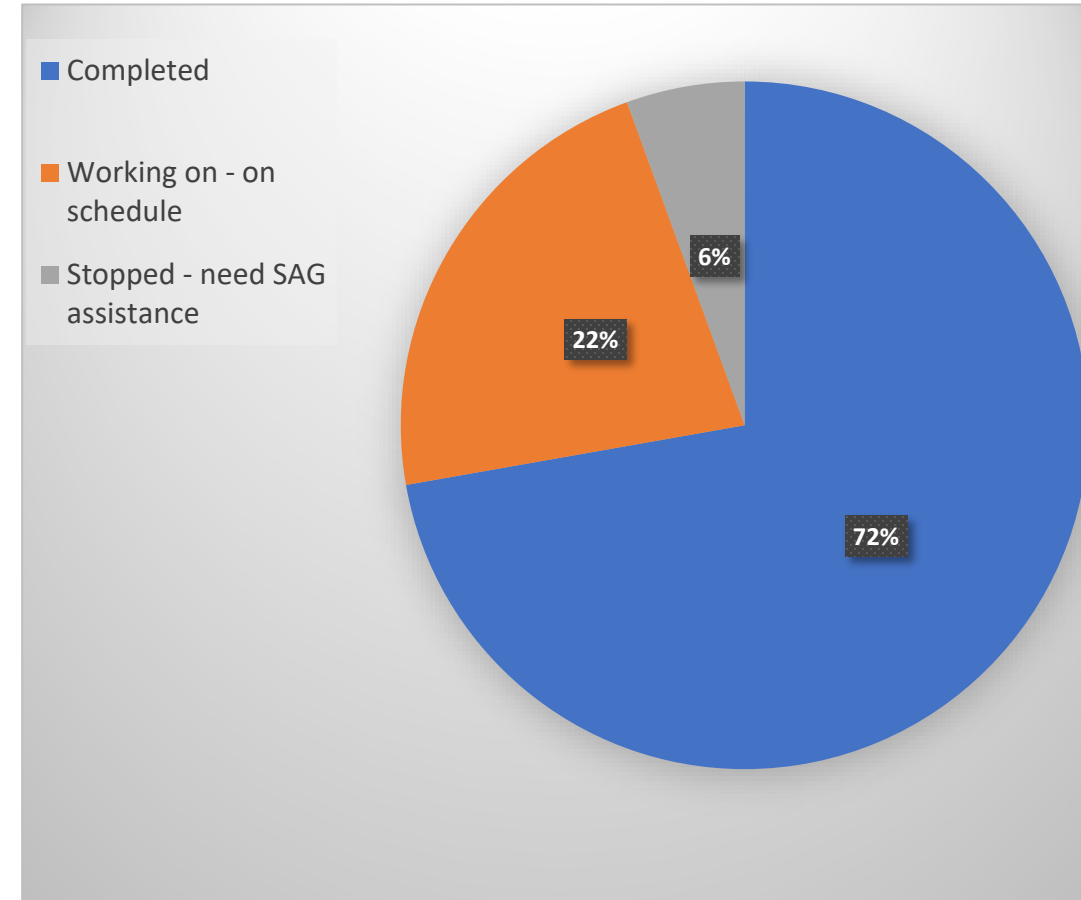


3. SECTOR UPDATE - General Workplan

SNFI Sector Workplan has 36 activities, of these:

- 26 completed – (72%)
- 8 – 22% ongoing and should finish
- 2 – 6% need attention by SAG

Core of the workplan generated through yearly Cluster Coordination Performance Monitoring (CCPM) exercise which will start January 2022



3. SECTOR UPDATE

Strategic Workstreams



SW1- Shelter – pathways to reconstruction



SW2- NFI - Cash vs in-kind modality for EHIs



SW3– Settlements – informal mapping and coordination



3. SECTOR UPDATE - Informal Settlement Information Sheets



Site Name	Site Type	Location	Established	Update Date
Heleias	IDPs Settlement	Benghazi	2012	15-Nov-21

326 Households
 1,466 Individuals
 35% % of Children

Site Overview

IDP's first arrived to the site in 2011 after being displaced from Tawergha. Benghazi Municipality allocated the site to be used as temporary housing for IDP's in 2011, the settlement population were displaced again in 2014 as a result of the fighting in Benghazi and then returned to the site in 2017 after the fighting stop. these is small continuous movement in and out of the camp (small number of households) but new big influx, evacuations or movement out of the camp since 2014. The original use of the site was for accommodation for workers and staff of a construction company that left the country in 2011 after the war started.

Physical Site

1. Construction site containers / housing units - extended with makeshift materials
2. Each family has private room and toilet and kitchen. Also, there is a mosque, shared toilets and kindergarden
3. The boundaries of the site are closed by a wall and with main gate
4. The site is not well illuminated
5. Yes there is a hall for social events. The mosque is also used for that purpose
6. No dedicated area for women.
7. Toilets are not easily accessible for people with disability.

Services

1. Toilets connected to septic tanks. There are bathrooms of private use of families, and shared bathrooms at the mosque and kindergarden. The number of the toilets around 37 toilets for all the families.
2. The main water source in the camp is man-made river and there is a water well inside the camp, they use it when the water from MMR is cutting.
3. Connected to mains, with no back-up service.
4. DRC is installing boilers for hot water
5. Barriers to access health centers are related to Cost of the services provided/cost of medication
6. There is a kindergarden in the site

Local Committee and Relationship with Local Authorities

There is a site committee. The committee has been nominated by the residents and endorsed by the Tawergha local council. The camp site supervisor confirmed the good relationship with the host community and no tension at all. Also, the relation with Sidi Assayeh local council is in a good stand and confirmed no warning of eviction has been received and they believe nothing will happen in the near future.

Eviction Threat Index

Medium

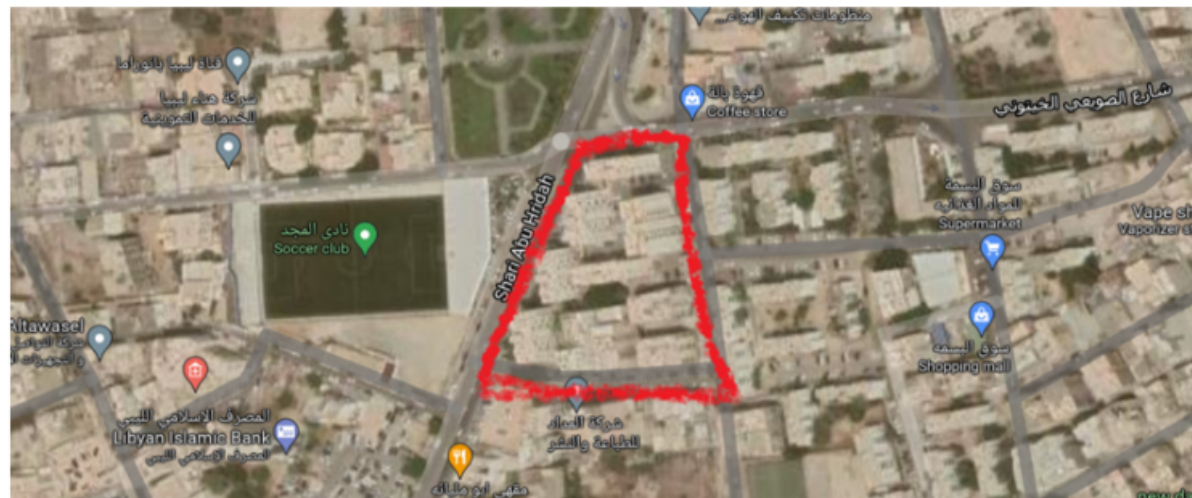
Persons with Disabilities?	Persons with Heightened Risk?
Yes	Yes

Priority needs are based on observation only and should be confirmed on site.



Area of Origin
Murzuq, Tawarga

Site Layout




07/12/2021

NFI Stock Map




Shelter and NFI Sector
Libya
Sheltercluster.org
Coordinating Humanitarian Shelter



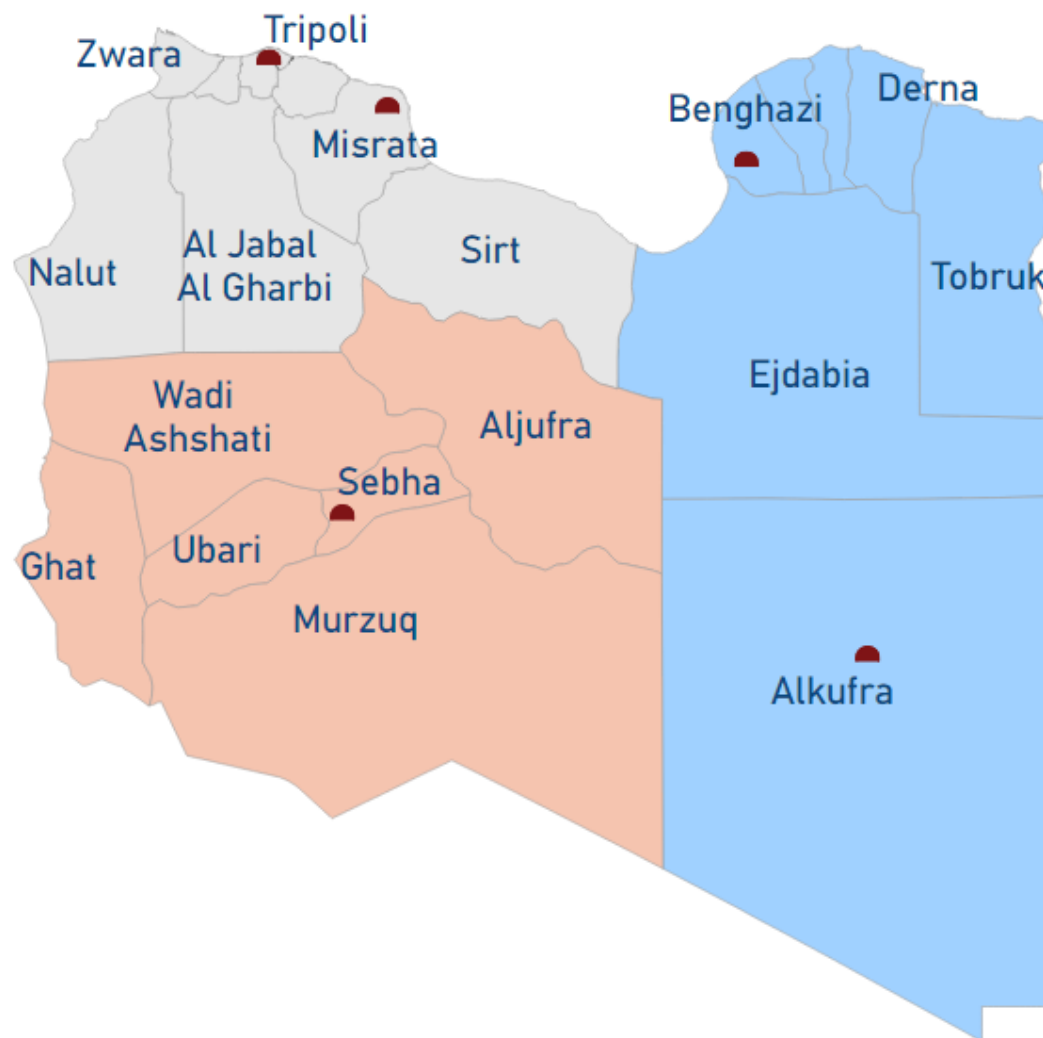
17,300

Stock Level



90

Pipeline



Mantika	Stock Level	Number of Warehouses
Benghazi	6,400	3
Tripoli	3,900	3
Alkufra		1
Misrata	6,500	1
Sebha	500	1
Total	17,300	9

4. Specifications and guidelines on Essential Household Items can be found at the Sector's website, <https://www.sheltercluster.org/libya/documents/nfi-technical-guidelines-v3>

5. The SNFI sector does not manage or specify hygiene kits – these are under the guidance of the WASH Sector

1. Total kits is 17,300 for 86,500 people (assume family size =5).

2. The stock levels are based on the basic kit comprising mattress, blanket, water container and solar lamp. However, many of the warehouses also contain other essential household items used for additional kits.

3. In addition to the physical stock held in the warehouses, partners have framework agreements with suppliers for basic, full, kitchen, winter and summer kits. Dependent on funding, these pre-tendered agreements will allow rapid procurement of kits from the Libyan market

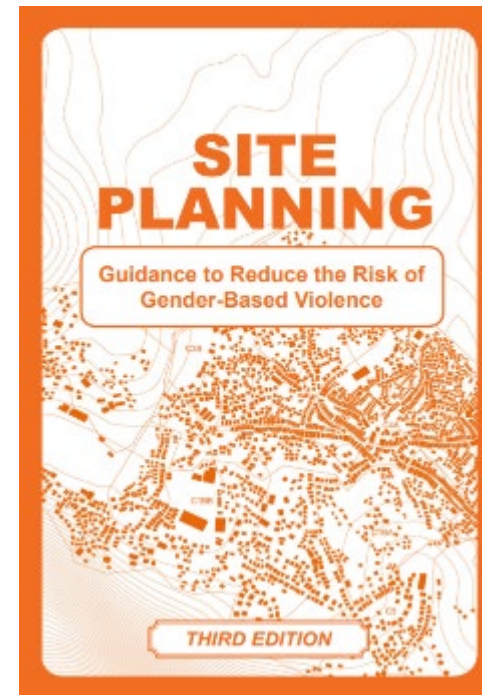
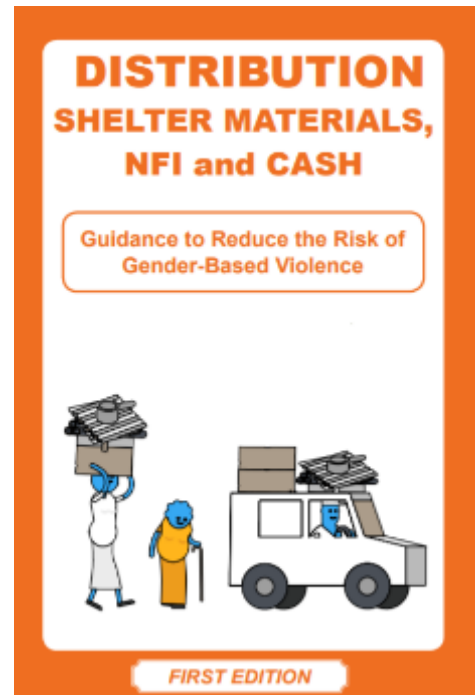
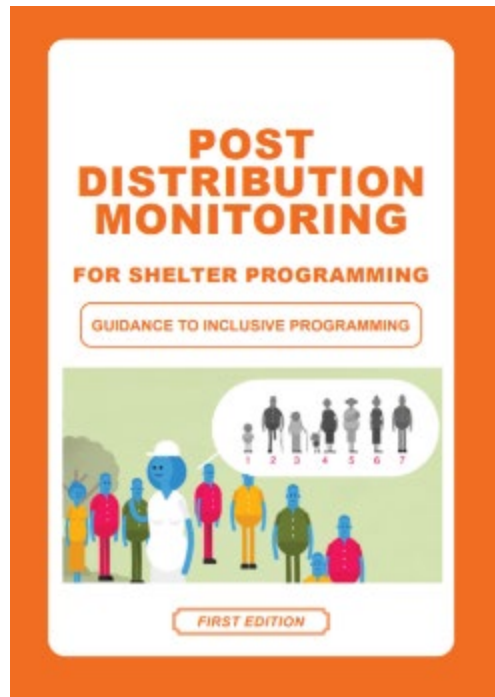
Partners



Sector Coordinator, Richard Evans, evans@unhcr.org; Sector Co-Coordinator: Zaid Al-Jabari, zaid.aljabari@nrc.no; Information Management Officer, Awat Salih, salihaw@unhcr.org

3. SECTOR UPDATE

The Global Shelter Cluster is organizing the **Gender Based Violence (GBV) Risk Mitigation in Shelter: Good Practices from the Field** webinar series in the framework of the 16 Days against GBV campaign on Wednesday 8th of December, from 1 to 2 PM CET.



https://us02web.zoom.us/webinar/register/WN_KmuA1ciQSDqwGjv1PgwVKg



<https://www.sheltercluster.org/gbv>



3. SECTOR UPDATE - Proposed Changes to Sector Recommended NFI Kits

personal items in red
shared in blue

	Existing V3 Guidance family size = 5	Proposed v4 Guidance family size = 5	Change
Basic kit – for emergency and first response displacement	<p>1 mattress, 1 blanket, and 1 pillow</p> <p>2 water jerry cans</p> <p>1 solar lamp</p>	<p>1 mattress, 1 blanket, and 1 pillow</p> <p>+ sleeping mat</p> <p>2 water jerry cans</p> <p>1 solar lamp</p>	Adding of sleeping mat.
Full – for protracted	<p>1 mattress, 1 blanket, 1 pillow, 1 sleeping mat, 2 pillows cases, 2 towels and 2 bed sheets</p> <p>2 water jerry cans,</p> <p>1 solar lamp, 1 tarpaulin</p>	<p>1 mattress, 1 blanket, 1 pillow, 1 sleeping mat, 2 1 pillows cases, 2 1 towels and 2 bed sheets</p> <p>2 water jerry cans,</p> <p>1 solar lamp, 1 tarpaulin</p>	Reduction to only 1 of pillow and towel
Winter	<p>1 heavy blanket per individual</p> <p>1 kerosene heater</p> <p>2 fuel jerry cans</p>	<p>1 heavy blanket per individual</p> <p>1 kerosene heater Electric heater or similar 2 fuel jerry cans</p>	Kerosene not in the market in Libya
Summer	<p>1 fan, 1 cool box, 1 water jerry can</p>	<p>1 fan, 1 cool box 1 water jerry can</p>	Cool boxes not currently in use and considered a luxury



<https://www.sheltercluster.org/libya/documents/nfi-technical-guidelines-v3>



3. SECTOR UPDATE

Our Guidance

Strategic Operational Framework



CONTENTS

1	Introduction	1
1.1	Strategy Document	1
1.2	Leadership and Structure	1
1.3	Coordination Team	2
2	Situation	2
2.1	Historical Context	2
2.2	Mid-Year 2021 Review	2
3	Country Level Strategy	5
3.1	Who do we serve?	5
3.2	2021 HRP	5
3.3	Shelter Sector Objectives	6
4	Work Plan	6
5	Response Plan	7
5.1	Shelter for IDPs, Returnees and Host population	7
5.2	Shelter for Refugees, Asylum Seekers and Migrants	8

11 Page Version 2, November 2021

5.3	NFI for IDPs, Returnees and Host population	8
5.4	NFI for Refugees, Asylum Seekers and Migrants	8
5.5	Infrastructure	9
6	Monitoring and Evaluation	10
7	Key Cross-Cutting Issues	10
7.1	Forced Evictions	10
7.2	Cash and Markets	11
7.3	Hygiene Kits	11
Annex A:	2021 HRP Narrative	12
Annex B:	2021 HVO Narrative	15
Annex C:	Response Plan Table	17

11 Page Version 2, November 2021



<https://www.sheltercluster.org/libya/documents/strategic-operational-framework-snfi-sector-libya-v2>



AOB

Next meeting Wednesday
12th January 2022 @ 11:00
Libya (2nd Wednesday of the
month)

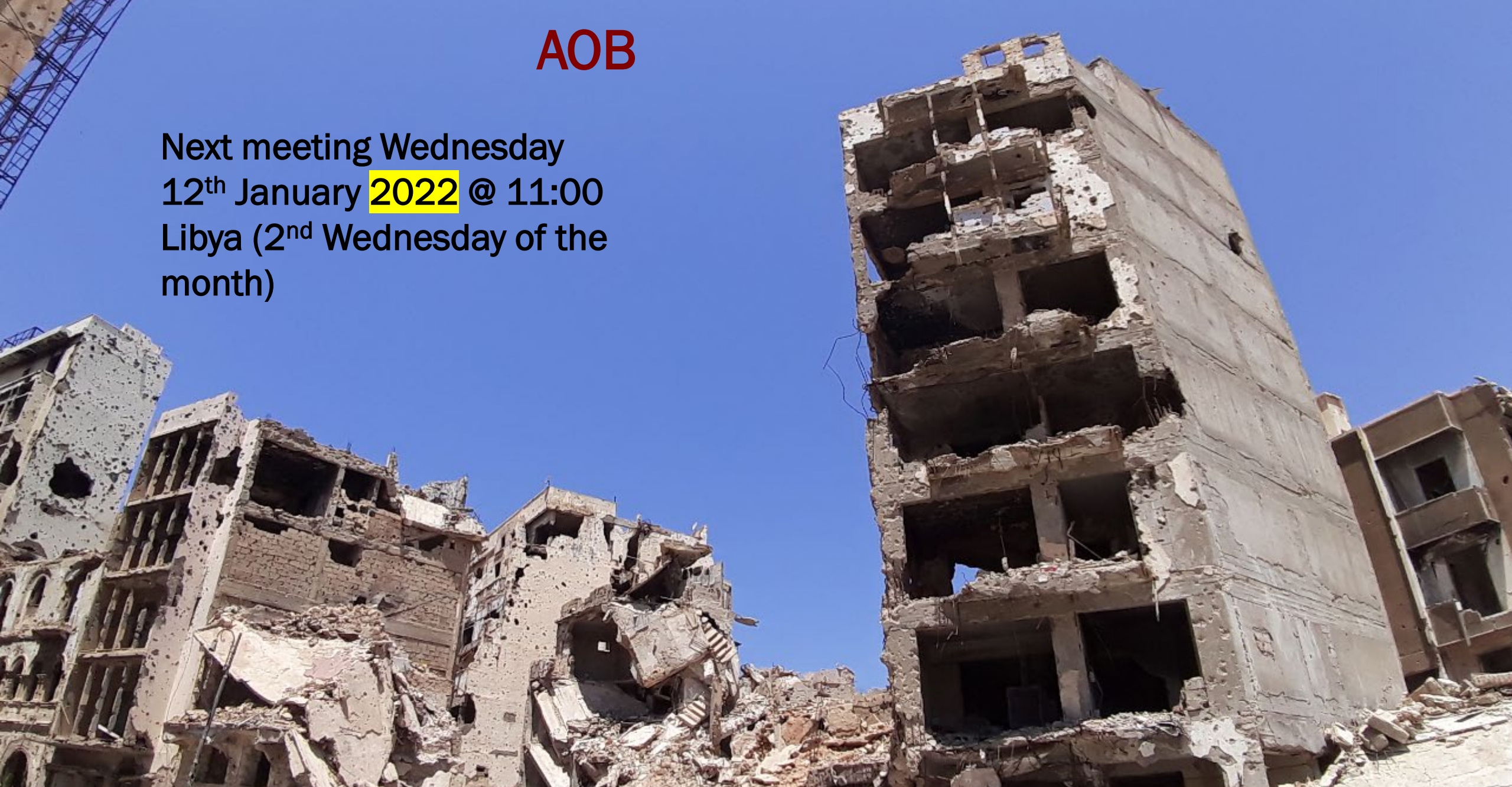


Photo: Safa Buzgeia, NRC – Sabri, Benghazi

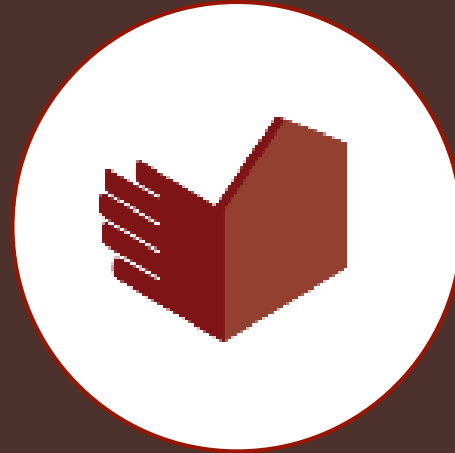


Shelter NFI Sector Libya
ShelterCluster.org
Coordinating Humanitarian Shelter

Shelter NFI Sector Libya

ShelterCluster.org

Coordinating Humanitarian Shelter & NFI



Thank you

SNFI Sector Coordinator
Richard Evans
evans@unhcr.org

SNFI Sector Co-Coordinator
Zaid Al Jabari
zaid.aljabari@nrc.no

SNFI Sector IMO
Awat Salih
salihaw@unhcr.org

SNFI Translator
Ali Abdullatif
abdullat@unhcr.org