



Humanitarian Affairs and Disaster Management Agency (HADMA)

Puntland Drought Assessment Report (December 2021)



Empty berked in Bursalah, Mudug (Photo by SDC)

Conducted by:

Humanitarian Affairs and Disaster Management Agency (HADMA), Puntland Water Development Agency (PWDA), Ministry of Health, OCHA, FAO, WFP, WHO, UNICEF, UNHCR, International Rescue Committee (IRC), Danish Refugee Council (DRC), Norwegian Refugee Council (NRC), Norwegian Church Aid (NCA), CARE International, Puntland Minority & Women Development Organization (PMWDO), World Vision International (WVI), Action Against Hunger (ACF), Horn of Africa Development Organization (HADO), Nomadic Development Organization (NODO), Horn Vision, Tadamon Social Society (TASS), Somali Red Crescent Society (SRCS), Somali Relief and Development Organization (SORDO), Humanitarian Relief and Development Council (HRDC), Puntland Youth and Social Development Association (PSA), AL TA'AWUN SOCIAL SERVICE (TSS), Agency for Development and Environmental Care (ADEC), Peace and Development Organisation (PDO), Somali Environmental Development Organization (SEDO), SOMFORD, KAALO Aid and Development (KAALO), Somali Aid and Development (SAAD), Action Against Poverty (AAP), Salaam Development Centre (SDC), Somali Foundation for Relief and Development (SOMFORD), Action in Semi Arid Land (ASAL), Charity Organization for Mothers, Poor, and Disabled People (COMPADP).

Supported by OCHA.

Executive Summary

1. Context and Objective of the Assessment

Drought has worsened significantly across Somalia following three consecutive below-average rainy seasons. According to FAO/SWALIM, drought conditions are expected to worsen in December 2021 and the first quarter of 2022, leading to a similar situation witnessed in 2016/2017. The intensifying drought has led to water shortages, crop failures, and high levels of livestock migration and deaths. This comes only two years after a devastating drought that impacted hundreds of thousands of lives, placed additional strain on communities, stretched the humanitarian response and displaced over 300,000 people.

The failure of three consecutive rains (Gu' and Deyr in 2020 and also Gu' in 2021) resulted in severe drought that has affected thousands of people in Puntland, where communities in Bari, Gardafuul, Nugaal, Sool, Sanaag and Karkaar regions are the most affected. The areas of Hawd livelihood zones of Mudug region of Galkacyo, Galdogob and Jariban districts are among the worst affected with highest livestock out-migration and in-migration pattern in Puntland.

Generally the Gu rains were delayed and the performance was poor in terms of coverage and distribution in most of the areas assessed including parts of Northern Inland Pastoral and Nugaal Valley except west and northwest of Hawd Livelihood Zone. This aggravated the already poor conditions that resulted from below-average 2021 Deyr rains. The Puntland Government of Somalia, through HADMA, requested support from OCHA together with national and international NGOs to undertake a comprehensive Puntland Drought Assessment 2021. The impacts of the drought differ across all regions hence the severity and intensity differ as well from region to region. The objective of the assessment was to develop an evidence-based and transparent water shortage situation analysis and provide immediate and medium-term recommendations for possible response options to prioritise available resources to respond to the evolving humanitarian situation following the drought situation in Puntland.

2. Methodology

This was a community-level assessment with key informants and was used to collect data including interviews with selected beneficiaries, key informants; focused group discussion (women and men), direct observation including ranking of problem areas and identification of most vulnerable groups within the community.

The assessment was conducted using the Somalia Rapid Needs Assessment (SRNA) methodology to provide a quick overview of the situation and needs on the ground. Assessed locations were purposively sampled at the community level (not household level). Therefore, the results are indicative and not statistically representative for each district. For such a rapid assessment, it's important that key findings/figures in the reports are analyzed together with existing qualitative information (e.g. context, underlying factors for some figures). Clusters and partners should rely on detailed sectoral data and in-depth information to reinforce the analysis.

In line with the commitment to Accountability to Affected Populations (AAP), the assessment asked each community about their top priorities. If certain sectoral needs are not reported as priorities by the affected populations, it does not mean that these sectoral needs do not exist. The percentages in the reported ranking of priorities also do not represent a proportional importance or severity of need. Humanitarian interventions should prioritize the response on the basis of the voice of the affected people, as well as other findings of the assessment and complementary information/data.

- **Composition of teams and locations assessed** Under the leadership of OCHA, teams were formed based on operational presence to collect data from accessible areas across all the regions of the state. OCHA and HADMA served as a lead, and one NGO was designated as a focal point to coordinate the data collection on the established teams with other NGOs and relevant government institutions participating. The division of work was as follows:
- **Table 1: Composition of Assessment teams**

District/location	Lead	Focal point	NGOs
Team 1: Nugaal: (Burtinle district) North Mudug: (Xarfo/Gaalkacayo/Galdogob)	OCHA	COMPADP	Somalia Red Crescent Society (SRCS), CARE, Puntland Minority & Women Development Organization (PMWDO) COMPADP and SDC, WFP, KAALO, IRC, WVI, HADMA
TEAM 2 MUDUG: (Jariban district) NUGAAL: (Eyl/Godobjiran district)	OCHA	HADMA	WHO, HADMA, WVI, WFP, NCA, KAALO, Somalia Relief and Development Organization (SORDO) and MOH
Cadaado TEAM 3 SANAAG/KARKAAR REGIONS:	OCHA	UNHCR	SRCS, ADEC, Horn of Africa Development Organization

Carmo/Badhan/Qardho/ Bandarbeyla districts)			(HADO) ,DRC, WFP, UNHCR, PDO, SEDO/ FAO
TEAM 4 SOOL/CEYN: (Taleex/Xudun? Laascanod/Bocame/ Ceyn/Buhoodle districts	OCHA,	FAO,	Tadamun Social Society (TASS), MOH, WFP, NODO, OTP DRC,FAO, WFP, HADMA, NRC,
TEAM 5 BARI/GARDAFU REGION: Iskushuban/Xafuun)	OCHA	HADMA	TASS,AAP,CARE SOMFORD,PSA,DRC and KAALO, DRC, WFP, HADO, ASAL,TSS.
Sool/Buhoodle	HADMA	HADMA	HADMA, NRC, WFP, Nomadic Development Organization (NODO),

- More than 80 locations (towns/villages and IDP sites) were purposively selected in consultation with local authorities including the district administrations based on the reported severity of the water shortage.

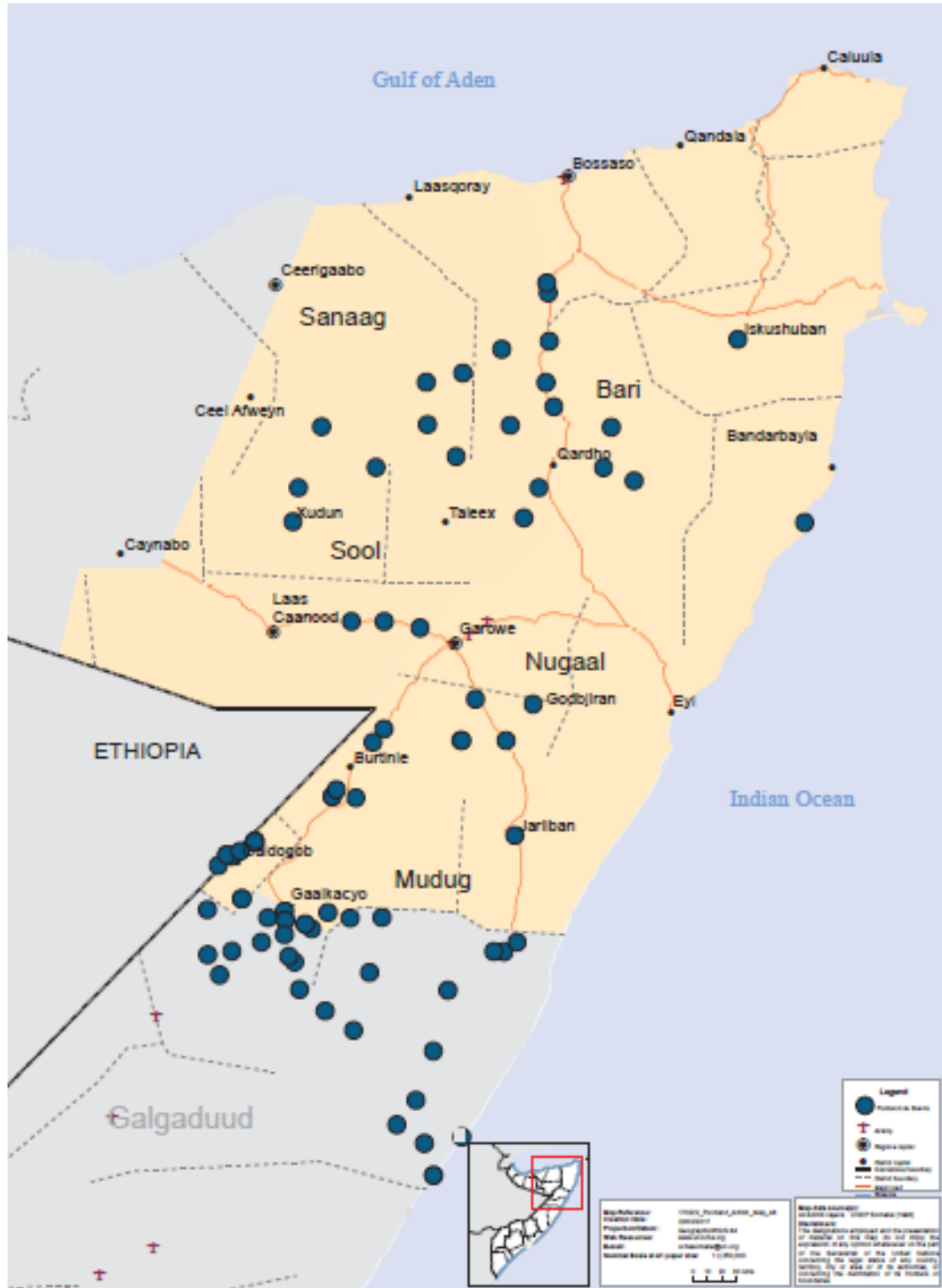
Region/Districts	Number of locations assessed
Bari	12
bandarbayla	1
bossaso	4
iskushuban	1
qardho	6
Mudug	49
gaalkacyo	21
galdogob	11
jariiban	6
Nugaal	7
burtinle	2
garowe	5
sanaag	6
laasqoray	6
Sool	7
laas_caanood	3
taleex	1
xudun	3

- Purposively sampled, community-level findings are indicative, and the results of the assessment are not statistically representative for each district.
- For some indicators, not all communities provided an answer. This explains variance in the total number of assessed communities across several indicators.
- All data was collected via Kobo by participants based in each region. The enumerators received their briefing and training on 28 November 2021 and collected data on the ground. Collected data was sent to the central Kobo server, and OCHA provided technical support for data cleaning.

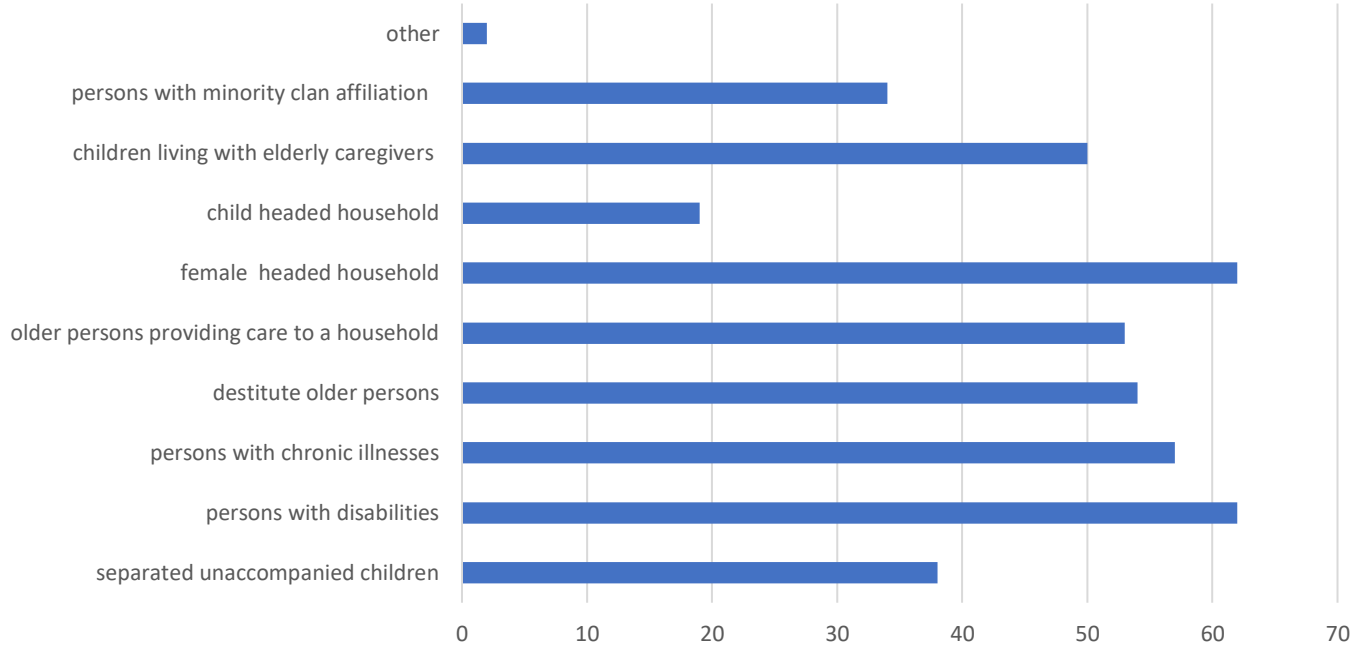
3. Results

(1) General information

Map of the assessed locations



Presence of vulnerable populations, by locations assessed



(2) Displacement due to drought

- In 47 out of 81 locations assessed (58%), the communities reported the arrivals of displaced persons in the last weeks to their location, while in 29 out of 81 locations (36%), people had departed in the last 4 weeks.
- The main reason for displacement in the last for weeks across nearly all (96%) locations was drought.
- Most recent IDP arrivals are residing with the host community and family (see graphic below).

Current settlement status of majority of recent IDP arrivals, by assessed locations



- **The trend of displacement:**

- The current situation in 81 sampled locations visited by the assessment teams in Bari, Gardaful, Karkaar, Mudug, Nugal, Sanaag and Sool regions depicts a prolonged drought condition due to failure of rains in the past two seasons.
- In all areas assessed, the teams observed that livestock body condition was very weak and unable to reach water points and grazing land. Some local herd owners in the communities visited reported that they purchased grains, corn and wheat to sustain their livestock.
- The communities assessed reported livestock deaths especially in Bari, Nugaal and Sool regions. Large numbers livestock will die if the situation deteriorates further. The problem is also compounded by the serious drop in animal trade and production which are the main livelihood and income sources of rural and pastoral communities and it caused new displacement, 60% of them to look for water and grazing land during the assessment.
- The teams noted extreme water shortage in the locations visited. The main water sources were the communal water reservoirs known as Berkeds, shallow wells, boreholes in major towns, and earth dams in some small rural settlements. Most of the Berkeds in the areas visited especially, Bari, Sool, Sanaag and Nugaal regions were empty due to poor rainfall in the past 2 years. Additionally, the main boreholes and shallows wells' yields have significantly declined and this has forced 60% of rural communities in Bari, Sool and Sanaag regions to start migration from villages of origin in search of water and pasture for livestock.
- 45% Fishing communities and Frankincense dependent communities similarly are affected by the current drought due to lower fishing catching rate and poor production of the Frankincense and they started moving to bigger cities such as Bossaso, Garowe and Galkacyo in order to look for better opportunities.
- Livestock from Somali Region Ethiopia migrated through to Jariban, Mudug. The witnessed situation was a sharp contrast from the one observed during the previous short rains season given that the migration commenced even earlier than normal. Approximately 50-75 percent of the herd had migrated from the low-lying areas within the plains in search of pasture, water and browse
- The main water sources for livestock in the pastoral livelihood zones were boreholes and shallow wells. The trekking return distance to water sources increased as was observed.
- Pasture is depleted, water crisis, no milk availability, livestock diseases and pests, non-operational market, mass outmigration, high malnutrition rates, further triggered displacement.

(3) Access to water

- **Water as a top priority concern:** 60% of all assessed locations mentioned water as their top priority need.
- **Water source:**
 - Out of 81 communities assessed, 50 have *berkeds*, 40 have boreholes, 19 have shallow wells, 16 communities reported that they receive water trucking.
 - **Berkeds:** 80% of all berkeds are reported to be depleted, and 20% less half than full.



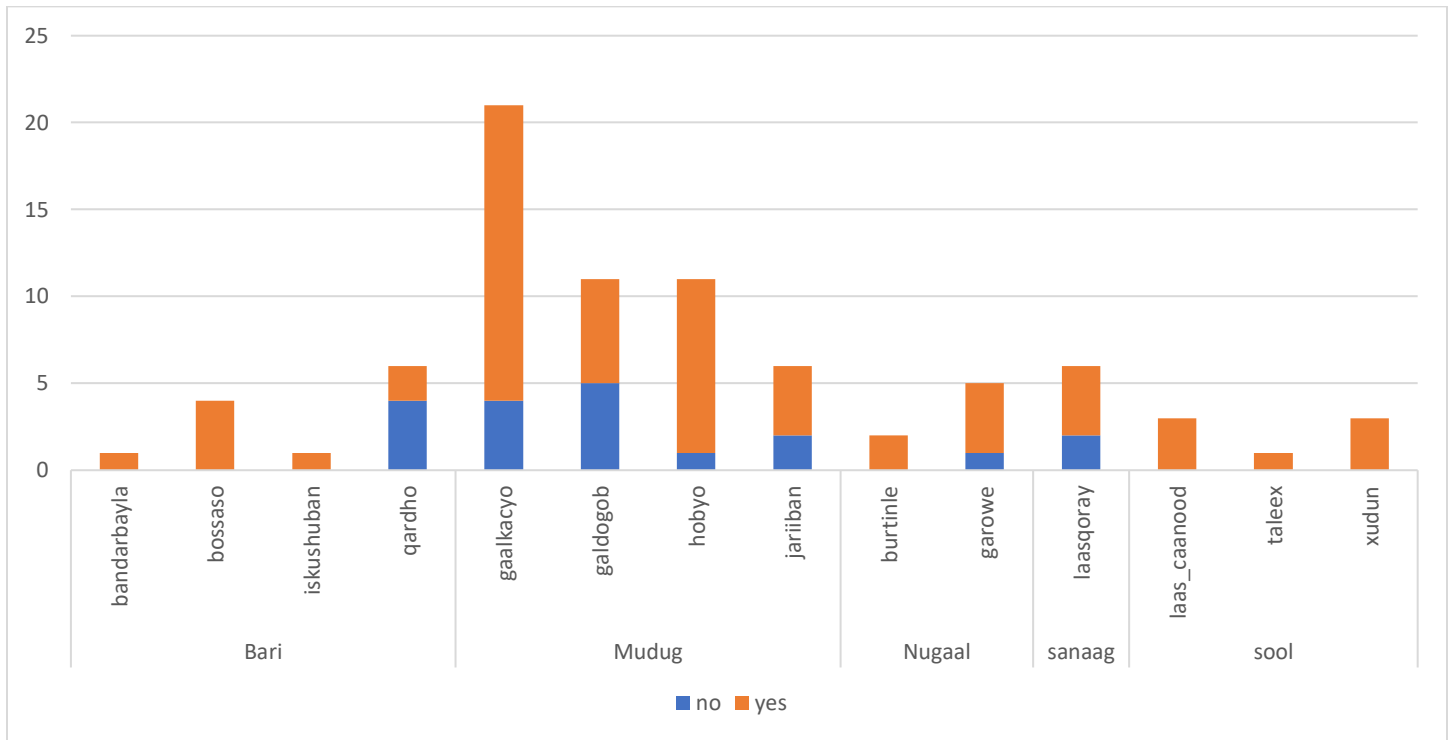
Consiltations with drought affected women on Mudug, SDC



MUAC Tape Screening in Tuulo Habibo, Mudug(Photo by COMPADP/PMWDO)

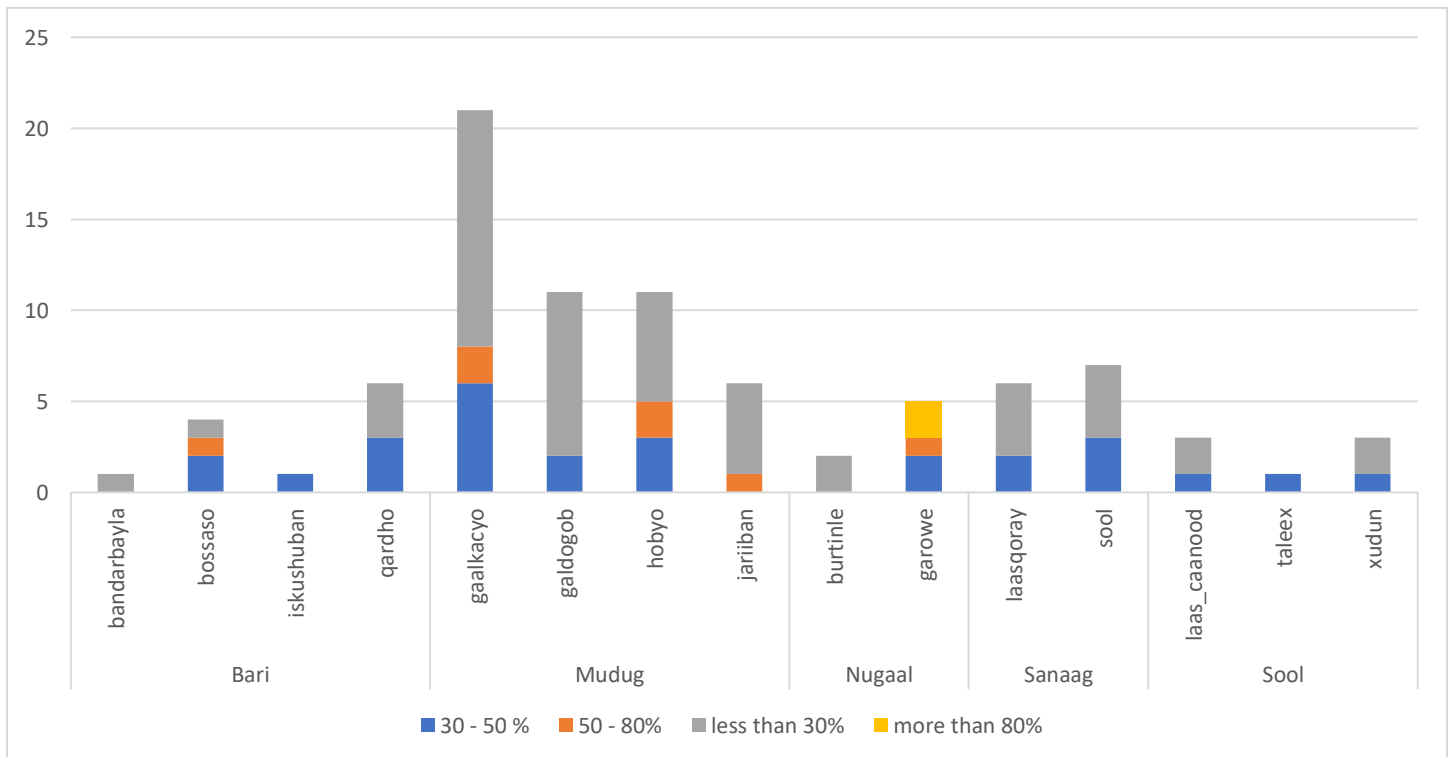
- **Consumption of water:** 63 out of 81 assessed communities (78%) reported that the majority of community members reduced water consumption due to water shortages/scarcity in the last 4 weeks.

Figure: Number of communities who reported that the majority of community members reduced water consumption in last 4 weeks



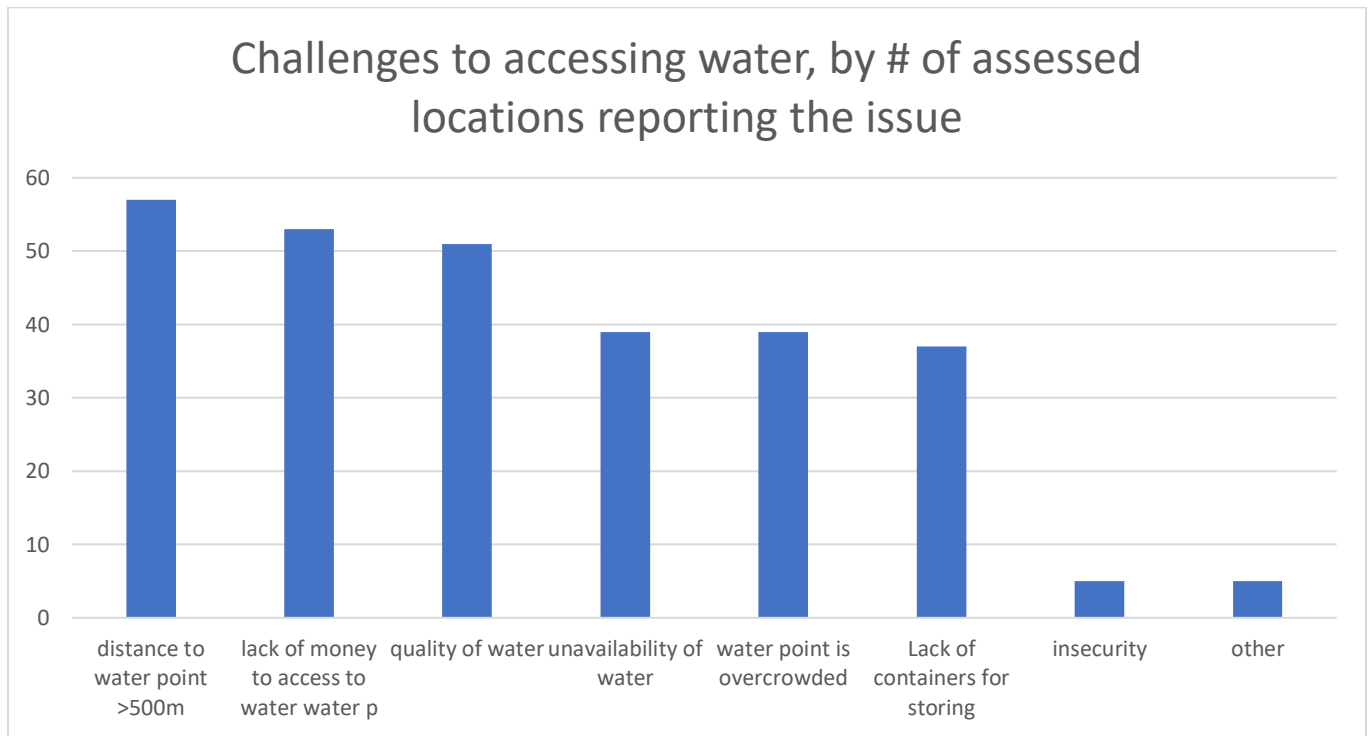
- Possession of water facilities (jerricans and barrels):** In the majority of communities (60%) less than 30% of the households in the community owned jerricans or barrels to store water. Low possession of water facilities was particularly present in the locations assessed in Gaalkacyo.

Table: Estimation of % of households in community with jerricans and barrels, by number of assessed locations

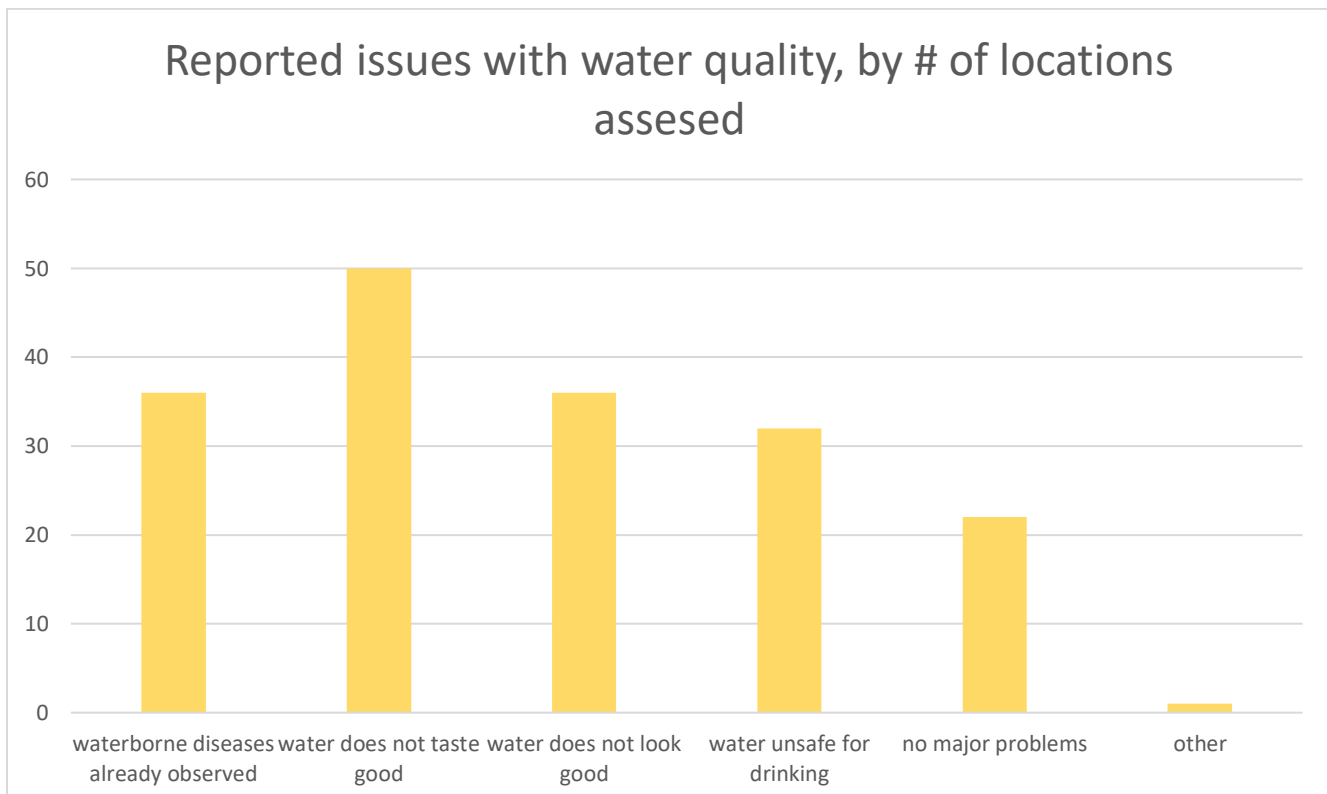


- **The major challenges faced in accessing water** were distance to the water point, lack of money, unavailability of water, overcrowded water points, the overcrowding at water points, and the quality of water.

Table and figure: Main challenges faced by the community in accessing water (multiple-choice question)



- **Concerns over the quality of water:**

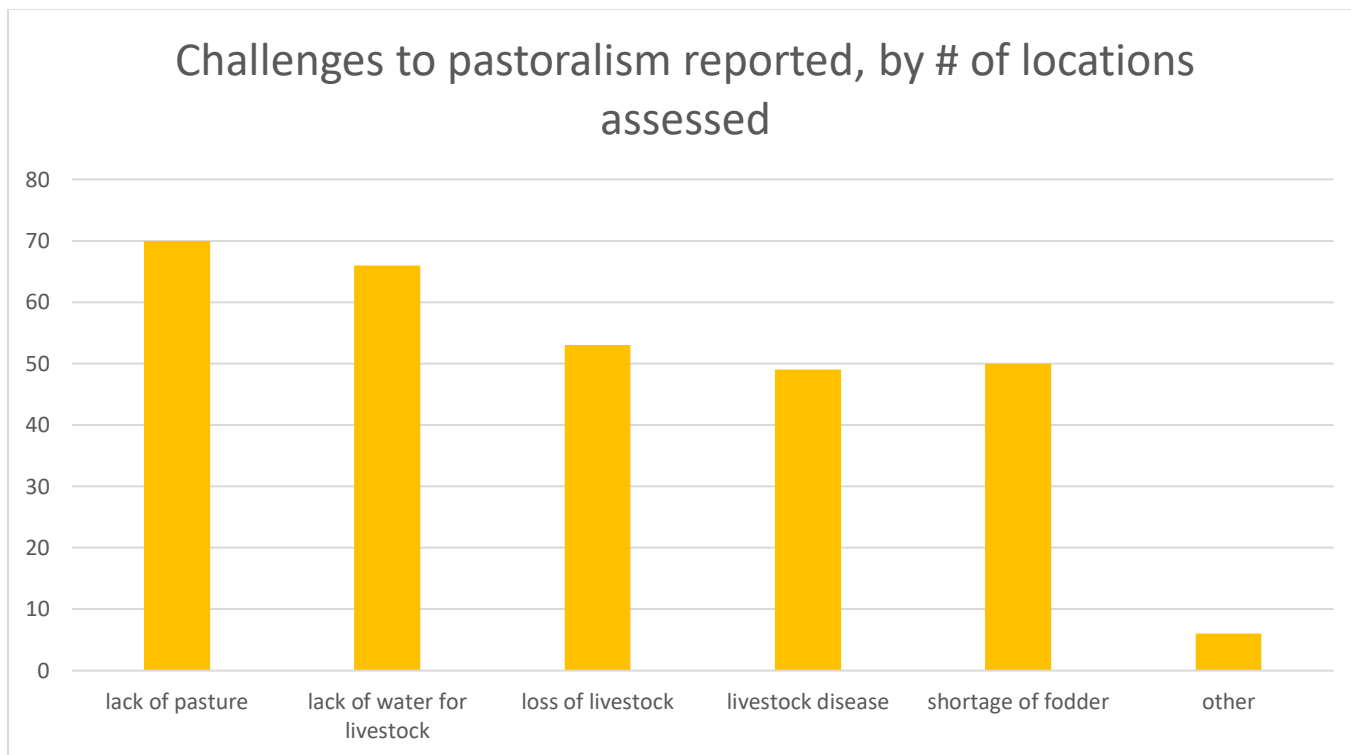


**Multiple choice question*

- **Water management committee:** 43% of all assessed communities reported to have WASH/water management committees
- **Water treatment:** Only 15% of locations reported to be treating their drinking water.
- At the time of assessment, water treatment chemicals were largely not available at the household level and are not widely used even in normal times mainly due unavailability.

(4) Food Security and Livelihood

- **The impact of the lack of rain on pastoralism and livestock:** Almost all (86%) of all assessed communities reported a lack of pasture due to a lack of rain, 81% of communities expressed concerns over the lack of water for livestock, 71 % of communities cited a loss of livestock, and 62 and 58% respectively raised the issue of shortage of fodder and livestock disease.



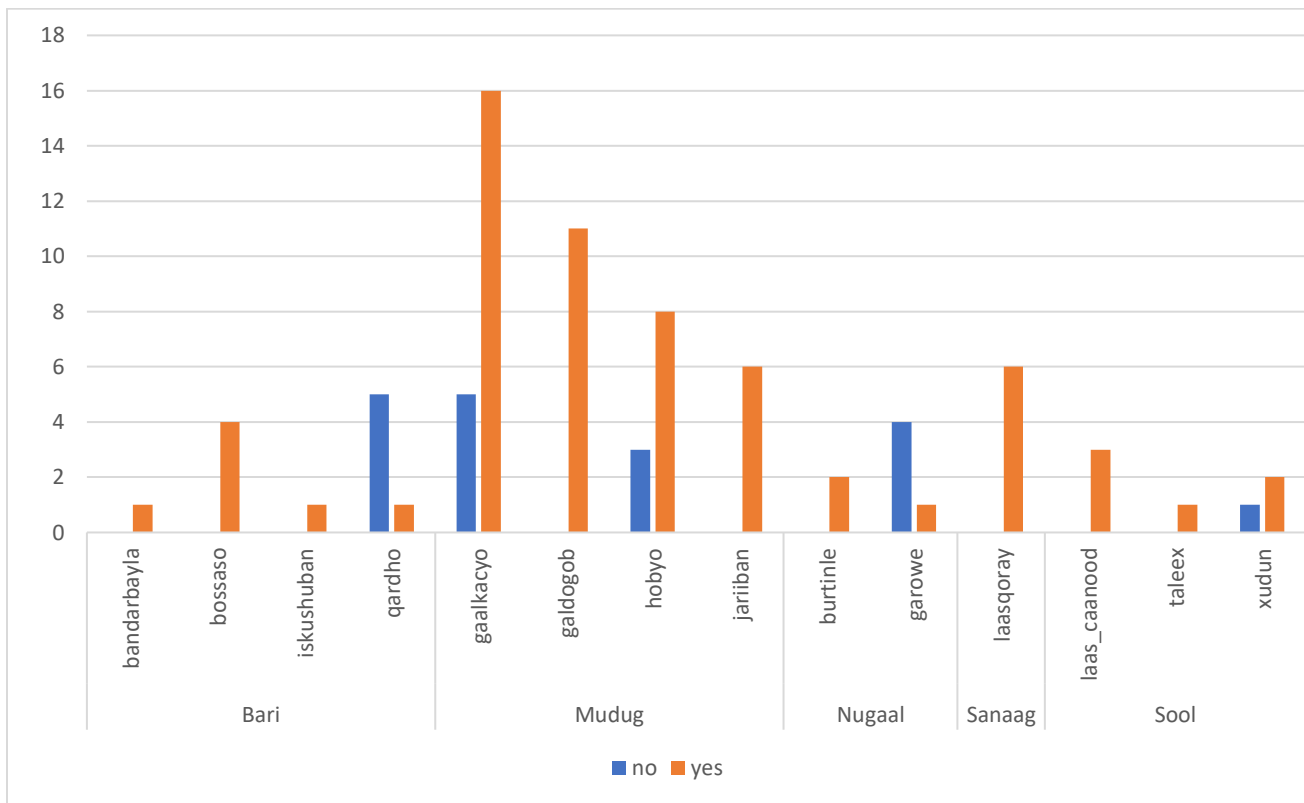
- **Impact on pasture:** 61 out of 81 of the assessed communities (75%) estimated that due to the current poor *Deyr* rain, most of the pasture has dried up. It should, however, be noted that even dried pastures can still provide grazing opportunities for livestock.
- **Fodder stock:** 62 out of 81 assessed communities (77%) estimated they could only feed their livestock for less than one month with their current available fodder stock.



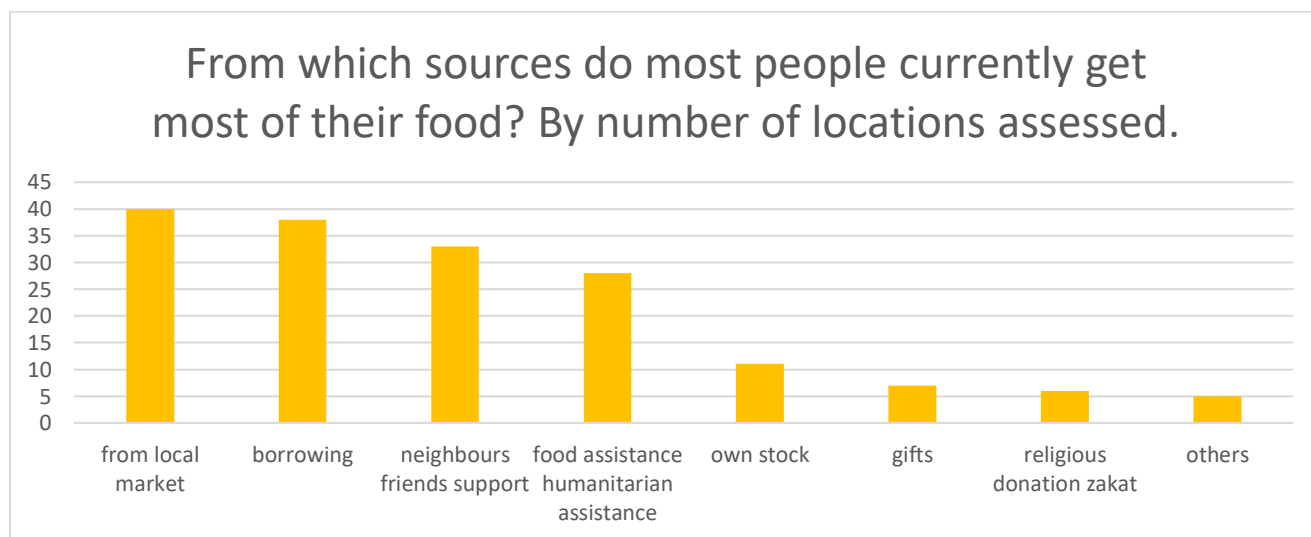
1. Dead animals due to drought and dry in Caday-Gabagabo, Mudug (Photo by COMPADP/PMWDO)
2. Migrating pastoralists from Nugaal to Bari with their animals (photo HADMA)

- **Crop production:** As for the projection and estimation of the impact of the lack of the current *Deyr* rain on crop production, 60 out of the 81 communities estimated that more than 74% of the production had been affected.
- **Food consumption strategies in last 30 days:** Out of 81 communities, 64 (79%) reported that the majority of children in their community have been reducing the frequency and quantity of their meals in the last 4 weeks, and 72 communities reported that adults were reducing their meals.

Table: Locations where children have reduced their food consumption in the last 4 weeks, by # of communities



- **Sources of food:** The main sources of food reported by communities were the local market, borrowing, neighbors and friends and food assistance. Only a small minority of locations reported to have access to their own stock of food.



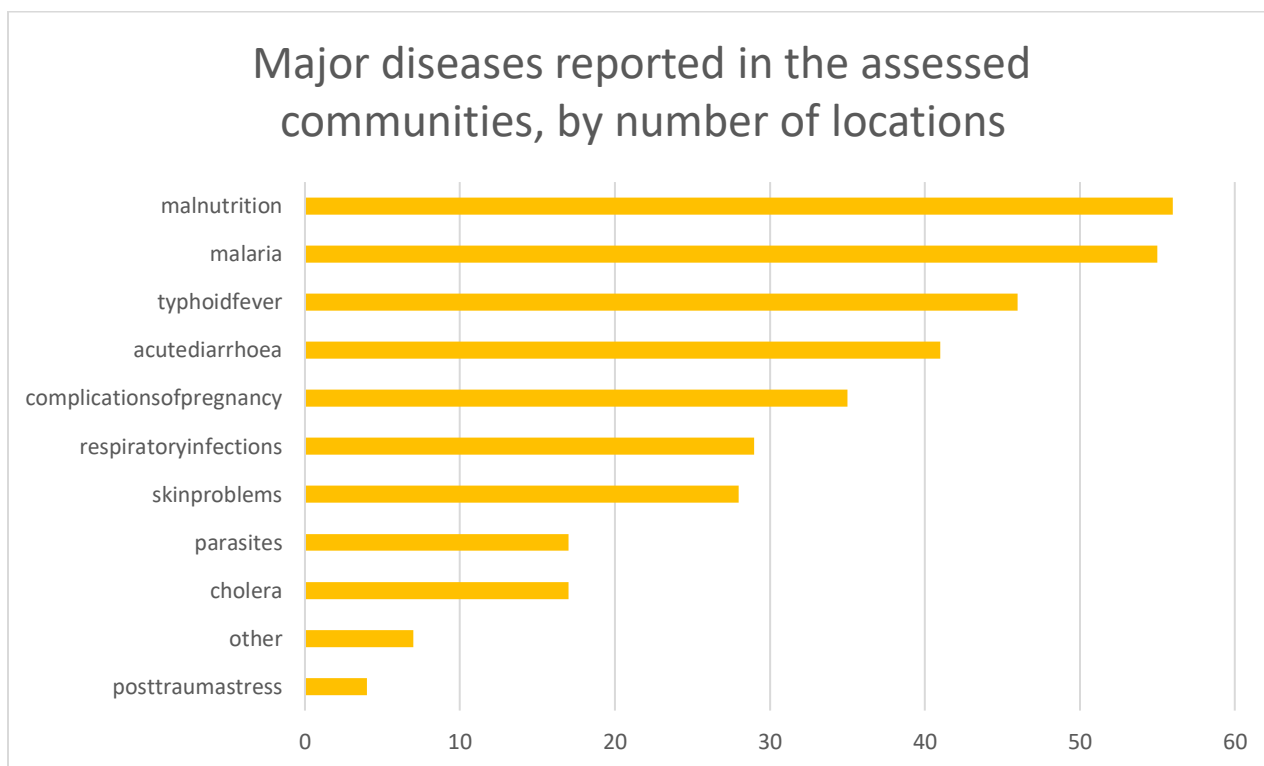
(5) Nutrition

- Majority of assessed communities (93%) reported an increase in acute malnutrition of children or pregnant and lactating women. At the same time, 46% of assessed communities reported access to nutrition centers/facilities where people can get nutrition programs
- Out of the 37 locations that reported access to a nutrition centre, 7 communities reported that the centre was over 5 km away from their location.
- The percentage of children with Mid Upper Arm Circumference (MUAC) below 135mm was 21 percent.

(6) Health

- In half of all assessed locations (47%), the community reported an increase in waterborne diseases in the last four weeks.
- 37 out of 81 communities reported that a health facility was at least 5km away from their location
- The main major diseases reported in the assessed locations in Puntland were as follows:

Figure: Major diseases reported in the assessed communities in Puntland in the last 4 weeks



(7) Top Priority Needs

The majority of assessed communities (58%) in Puntland reported water as their first priority, with food and health needs mentioned as top priorities as well.

Table: Top priority needs, by % of assessed locations in Puntland

	Food	Water	Health
1st priority	28%	61%	11%
2nd priority	55%	19%	26%
3rd priority	12%	15%	73%

4. Recommendations

(1) General recommendations

Current drought response is reaching less than the affected and vulnerable people. Therefore, scaling up current response will require more funding; thus mobilization of funds is critical at this point in time to ensure that humanitarian assistance is maintained in all the affected regions. Given the continued impact of the drought in the above areas compounded by the poor Gu' rainfall, the early warning signs of an impending crisis were observed by the mission. The recommendation is that it is now the time to act in order to meet the needs of the affected people.

Contingency planning and preparedness is required to avert further deterioration of the humanitarian situation of the affected communities. Timely response planning for the new hot spots is also crucial to prevent more households falling into crisis and emergency situations.

- Authorities to facilitate community dialogue on resource sharing mainly pasture and water.
- Updating of contingency plans and activation of sectoral response plans to facilitate early response.
- Immediate unconditional cash provision to the most vulnerable affected populations to cater for food and water needs in Xiriiri, Mareer, Xubabays, Biyo Guduud, Duudhooyo, Rako and Iskushuban town under iskushuban district in Bari region to save the lives of human being.
- Provision of safe drinking water- emergency water trucking to the all affected villages for human and livestock consumption.
- Small scale business support through grants for the communities mainly for female headed households
- Distribution of NFIs to vulnerable people in worst affected areas especially the displaced households in target locations for those who move from place to place.
- Installation of solar lights for the communal latrines to be constructed and provide portable solar lanterns in concentration areas for the migrating or displaced families due to the drought.
- Awareness on GBV prevention and response package as well as extension and expansion of GBV and health support integrated services to the displaced people in Bari region.
- Raise public awareness on hygiene and sanitation aimed to reduce water born diarrhea through provision of emergency WASH hygiene kits
- Construct school/child friendly space and support educational facilities and other means to support teachings and schooling system in coordination with the regional administration.
- Improving hygiene education through awareness raising sessions and provision of hygiene kits.
- The assessment team recommended COVID-19 campaign awareness and the establishments of emergency health team with medical health supplies and nutrition mobile teams.

(2) Sectoral recommendations

• WASH (immediate action required)

- All the locations visited did not receive any hygiene promotion messages or hygiene kit distribution in kind for the last 5 months
- Water trucking to most vulnerable hot spots
- Rehabilitation/upgrade of existing strategically located boreholes
- Rehabilitation/upgrading/construction of shallow wells
- Distribution of water storage facilities such as jerricans, barrels and bladder tanks.
- AWD outbreak prevention; preventive treatment of unprotected water sources, provision of household water treatment and safe storage products (HWTSS) and WASH in emergency treatment centers.
- Latrine construction and rehabilitation
- Conducting of Hygiene and sanitation training
- Provisional of mechanical and electrical materials to repair boreholes
- Drilling of boreholes and provide solar equipment for solar water pumping
-

• Food Security and livelihoods

- Scale up of current Food/Cash distributions in terms of coverage and magnitude extending to the remote areas to avoid new displacement and pastoral destitution.
- Scale up nutrition interventions through comprehensive collaborations by all stakeholders involved. And immediate distribution of the Blanket Supplementary Feeding for children, PLW and Lactating mothers.
- Asset creation and saving from the affect of the current and expected drought from Jan to May 2022, including livelihood support projects and safety net program including restocking.
- Distribution of the animal fodder to the areas most drought affected regions and livelihoods to prevent asset depletion and destitution.
- Building livelihood skills of the rural and urban communities affected by drought, increased food prices and shortage of the employments to withstand the shocks.
- Income generation of the small-scale traders/retailers in the main towns and villages
- Drought-smart farming package distribution
- Livestock supplementary feeds and reinforce the fodder stock

- **Health/Nutrition**
 - Reinforce surveillance and pre-position medical supplies and nutrition inputs in areas of potential displacement and drought-affected areas.
 - Management of Acute Malnutrition (IMAM) through integrated health and Nutrition
 - Capacity building for nutritionists and CHVs

- **Shelter/NFI**
 - Pre-position shelter/NFI items for potential drought displacement especially in IDPs and rural settlements.
 - Permanent shelters construction and rehabilitation of existing transitional shelters.
 - NFI distribution

- **Education**
 - Closely monitor the situation of the closure of schools due to water shortage.
 - Reinforce water provision in schools for the continuation of learning and prevent the closure of schools.
 - Consider scaling up of school feeding programme to retain children in schools in affected areas.

- **CCCM**
 - Closely monitor the incoming displaced populations in existing IDP sites, as well as monitor the formation of new IDP sites due to drought
 - Through Camp Management Committee (CMC) and complaint and feedback mechanism, reinforce early warning of water shortage of the camp.

- **Protection**
 - Reinforce protection monitoring, especially follow up population movement and negative coping mechanisms, and identify increased risks for vulnerable populations, particularly persons with disabilities and female-headed households. The impact of drought on vulnerable populations requires close monitoring.
 - Households have reportedly taken their children out of school due to the inability to afford education cost
 - there has been an increase in the number of child-headed households in the sites, most often due to children being separated or losing parents to the drought or parents going to look for food/water.