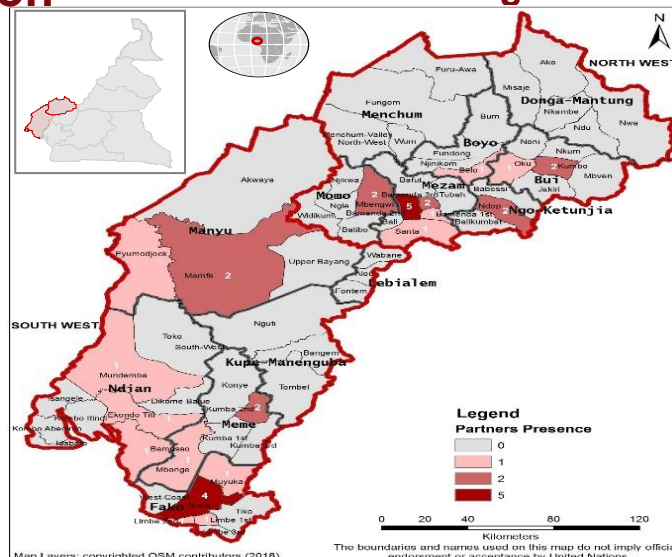




NFI Kits Distribution SW Region: ©UNHCR August 2019



NEEDS ANALYSIS

The humanitarian situation in the North West and South west crisis in Cameroon is preoccupying, as civilians continue to be targeted by excessive violence including burning of houses and property. Displacement levels have augmented steadily leading to a concerning increase in humanitarian needs.

In August, significant waves of displacements were observed as people fled violence and the potential consequence of the lockdowns announced by the NSAGs. Also, many people moved to other areas of Cameroon to avail of schooling opportunities. The continuous burning of houses in villages increased the need for shelter and NFIs. Although the crisis is characterized as a protection crisis, severe and growing needs have been noted in health, education, shelter, NFI, food security and WASH in most of the divisions affected by recurrent violence

The Shelter/NFI response in the NW is significantly smaller compared to the SW, despite the needs being much higher, due to lack of funding. Nonetheless, UNHCR and partners plan to distribute an additional 3,000 shelter kits in the SW and 4,000 in the NW in the coming months including 3,000 NFIs in the NW and 2,000 in the SW.

RESPONSE

- 14000 persons benefited from shelter assistance in August making total of 65,969 persons reached with shelter. More than half of them with light shelter kits (tarpaulin and rope, without tools), while less than 40% have received standard shelter kits.
- Most organizations provide a hybrid package made up of both Shelter and NFI items.
- In August, roughly 1,240 persons received NFI assistance making a total of 75,991 people who have been
- supported with NFI assistance since January
- Shelter/NFI response in the NW is significantly smaller compared to the SW due to insufficient funding.
- There has been a noticeable willingness to allow humanitarian aid by the warring parties especially the None State Armed Groups. As such, more organizations are able to go to the field

GAPS & CHALLENGE

- The volatile and unpredictable security situation delays access to some locations of IDPs and affected communities, particularly those hiding in remote areas and in the bush
- Numerous Ghost town and lockdown days enforced by None state armed groups slows down field work and distributions.
- Funding for humanitarian response remains key to meeting the needs of the persons in need.

CLUSTER TEAM

Shelter Cluster Coordinator
Ibrahim Mahamat Alhadi
NWSWCameroon@sheltercluster.org
mahamati@unhcr.org
(+237) 699805749

Shelter Cluster Information Management Associate

Ivo Meh Kum (UNHCR)
im.cameroon@sheltercluster.org
mehkum@unhcr.org
(+237) 699906800

KEY DATES

On the 17th of October 2018, the Shelter/NFI Cluster was activated for the South-West and North-West regions of Cameroon, together with 7 other clusters, to support the response to the crisis occurring in both these regions. The Shelter/NFI Cluster SWNW Cameroon is led by UNHCR. The Cluster was established in Buea in October, and a mirror hub was setup in Bamenda, in December 2018

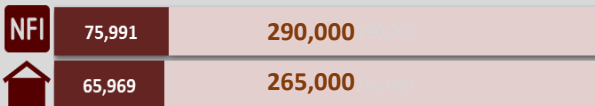
KEY DOCUMENTS

- [Shelter/NFI Cluster Strategy](#)
- [SWNW Cameroon Minimum NFI Kit](#)
- [SWNW Cameroon Minimum Shelter Kit](#)

KEY LINK

<https://www.sheltercluster.org/response/cameroon>

RESPONSE AGAINST TARGET



FUNDING

Received \$1.4 M
Required \$8.6 M