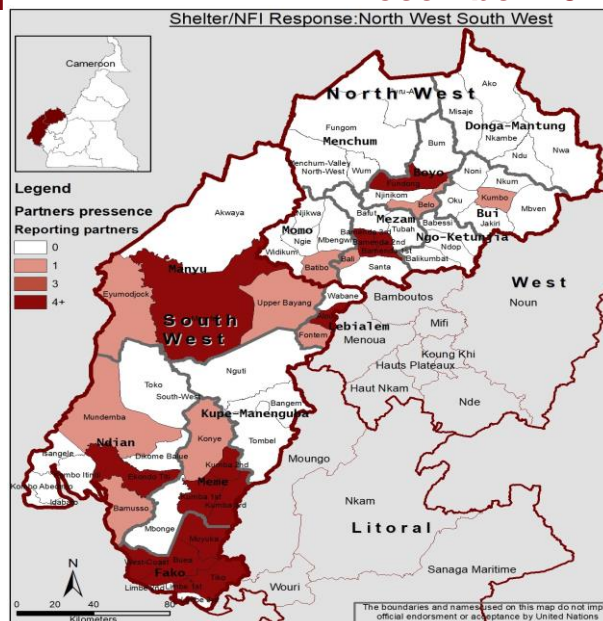




NFI Kits Distribution SW Region: ©UNHCR October 2019



**NEEDS ANALYSIS**

The humanitarian situation of civilians in the North-West and South-West (NWSW) regions of Cameroon continue to deteriorate as the armed conflict between the parties intensifies. With the upcoming twin elections taking place in February 2020, instability has resulted in the burning of houses and villages leading to approximately 6,000 people being displaced across both regions.

A Multi-Sectoral Needs Assessment (MSNA) completed in September 2019 assessed displacement in the NW SW at 465,909. This is in addition to over 200,189 IDPs from the NWSW displaced into neighbouring Littoral and West regions.

The provision of humanitarian relief to the affected communities in the North west and south west regions continue to be a challenge. Several affected communities/villages in both regions have not been reached with humanitarian assistance especially in the North West. Out of 34 subdivisions in the North West region, only 8 have been reached with at list core relief items. There is a need for an up scaling of the humanitarian response in terms of shelter and NFI especially after the election period since a rise in violence and hence needs are anticipated.

**RESPONSE**

- 3,845 persons received NFI assistance in the month of December.
- 27,863 households have thus been assisted with NFI in the North West and South West regions. Thus 139,315 individuals (32% of target) are estimated to have been reached with NFIs since the beginning of 2019
- 1,932 persons were supported with emergency shelter for the month of December.
- 20,463 households have so far been reached with emergency shelter, covering an estimated 102,315 individuals (28% of target) within the two regions.

**GAPS & CHALLENGE**

- The volatile and unpredictable security situation delays access to some locations of IDPs and affected communities, particularly those in remote areas and in the bush
- Numerous Ghost town and lockdown days enforced by None state armed groups slows down field work and distributions.
- There have been reports of humanitarian aid being burnt and destroyed on its way to beneficiaries and even after distribution.
- Funding for humanitarian response remains key to meeting the needs of the persons in need.

**CLUSTER TEAM**

Shelter Cluster Coordinator  
**Ibrahim Mahamat Alhadi**  
[NWSWCameroon@sheltercluster.org](mailto:NWSWCameroon@sheltercluster.org)  
[mahamati@unhcr.org](mailto:mahamati@unhcr.org)  
(+23 7) 699805749

Shelter Cluster Information Management Associate  
**Ivo Meh Kum (UNHCR)**  
[im.cameroon@sheltercluster.org](mailto:im.cameroon@sheltercluster.org)  
[mehkum@unhcr.org](mailto:mehkum@unhcr.org)  
(+23 7) 699906800

**KEY DATES**

On the 17th of October 2018, the Shelter/NFI Cluster was activated for the South-West and North-West regions of Cameroon, together with 7 other clusters, to support the response to the crisis occurring in both these regions. The Shelter/NFI Cluster SWNW Cameroon is led by UNHCR. The Cluster was established in Buea in October, and a mirror hub was setup in Bamenda, in December 2018

**KEY DOCUMENTS**

- [Shelter/NFI Cluster Strategy](#)
- [SWNW Cameroon Minimum NFI Kit](#)
- [SWNW Cameroon Minimum Shelter Kit](#)

**KEY LINK**

<https://www.sheltercluster.org/response/cameroon>

**RESPONSE AGAINST TARGET**

