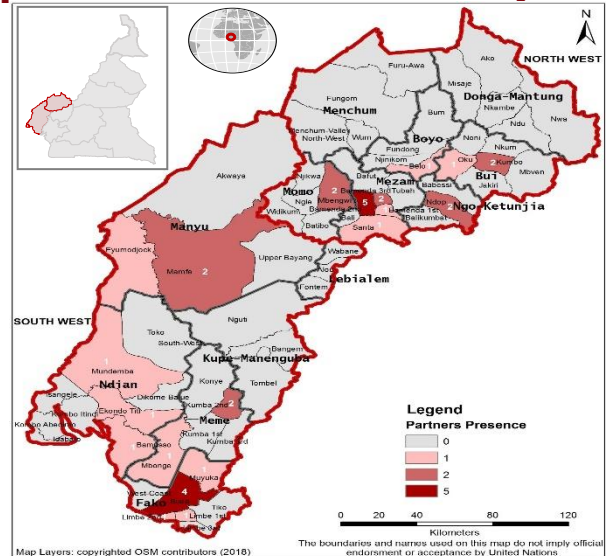




NFI Kits Distribution SW Region: ©DRC July 2019



NEEDS ANALYSIS

The humanitarian situation in NWSW continues to deteriorate with serious protection incidents, including excessive violence against civilians by all parties to the conflict being noted. Displacement of civilians continues to increase with destruction of houses and villages by fighting parties. Impunity for crimes and acts of violence against civilians throughout the NWSW is a hallmark of the crisis.

Within the month of July, an estimated 875 households were reported to have been displaced in the North West and South West Regions, fleeing violence. Humanitarian access to persons in need throughout NWSW continues to be a challenge with armed groups often blocking access as well as threatening humanitarian personnel. Although the crisis is characterized as a protection crisis, severe and growing needs have been noted in health, education, shelter, food security and WASH.

Shelter Cluster members have been involved in the provision of multiform shelter and NFI assistance. Due to limited funding for the humanitarian response, not up to half of the targets set for Shelter and NFI for 2019 have been reached.

RESPONSE

- Approximately 64,569 people have now been reached with shelter assistance. More than half of them with light shelter kits (tarpaulin and rope, without tools), while less than 40% have received standard shelter kits.
- Most organizations provide a hybrid package made up of both Shelter and NFI items.
- Since the beginning of the response this year, approximately 74,751 people have been supported with NFI assistance.
- Shelter/NFI response in the NW is significantly smaller compared to the SW due to inaccessibility and insecurity.
- There has been a noticeable willingness to allow humanitarian aid by the warring parties especially the None State Armed Groups. As such, more organizations have been able to go to the field

GAPS & CHALLENGE

- The volatile and unpredictable security situation hampers access to some locations of IDPs and affected communities, particularly those hiding in remote areas and in the bush
- Numerous Ghost town and lockdown days enforced by None state armed groups significantly hampers field work and distributions.
- Administrative bottle necks caused by the recently created government agency to manage humanitarian activities is seriously affecting the flow of relief items to the people of concern

CLUSTER TEAM

Shelter Cluster Coordinator
Ibrahim Mahamat Alhadi
NWSWCameroon@sheltercluster.org
mahamati@unhcr.org
(+237) 699805749

Shelter Cluster Information Management Associate
Ivo Meh Kum (UNHCR)
im.cameroon@sheltercluster.org
mehkum@unhcr.org
(+237) 699906800

KEY DATES

On the 17th of October 2018, the Shelter/NFI Cluster was activated for the South-West and North-West regions of Cameroon, together with 7 other clusters, to support the response to the crisis occurring in both these regions. The Shelter/NFI Cluster SWNW Cameroon is led by UNHCR. The Cluster was established in Buea in October, and a mirror hub was setup in Bamenda, in December 2018

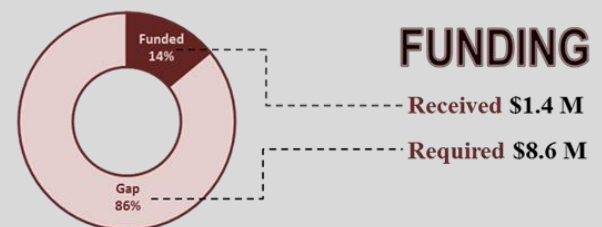
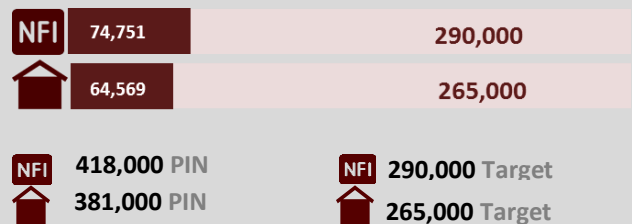
KEY DOCUMENTS

- [Shelter/NFI Cluster Strategy](#)
- [SWNW Cameroon Minimum NFI Kit](#)
- [SWNW Cameroon Minimum Shelter Kit](#)

KEY LINK

<https://www.sheltercluster.org/response/cameroon>

RESPONSE AGAINST TARGET



CLUSTER TEAM
Shelter Cluster Coordinator
Ibrahim Mahamat Alhadi
NWSWCameroon@sheltercluster.org
mahamati@unhcr.org
(+237) 699805749

Shelter Cluster Information Management Associate
Ivo Meh Kum (UNHCR)
im.cameroon@sheltercluster.org
mehkum@unhcr.org
(+237) 699906800

KEY DATES
On the 17th of October 2018, the Shelter/NFI Cluster was activated for the South-West and North-West regions of Cameroon, together with 7 other clusters, to support the response to the crisis occurring in both these regions. The Shelter/NFI Cluster SWNW Cameroon is led by UNHCR. The Cluster was established in Buea in October, and a mirror hub was setup in Bamenda, in December 2018

KEY DOCUMENTS

- [Shelter/NFI Cluster Strategy](#)
- [SWNW Cameroon Minimum NFI Kit](#)
- [SWNW Cameroon Minimum Shelter Kit](#)

KEY LINK
<https://www.sheltercluster.org/response/cameroon>

RESPONSE AGAINST TARGET

NFI	74,751	290,000
	64,569	265,000
NFI	418,000 PIN	NFI 290,000 Target
	381,000 PIN	265,000 Target

FUNDING
Received \$1.4 M
Required \$8.6 M