



NFI Kits Distribution NW Region: ©NRC 2019

NEEDS ANALYSIS

Fear and insecurity are what characterize the lives of the people in most areas of the North West and South regions of Cameroon. Indiscriminate burning of people’s homes and livelihoods in the rural areas as a form of collective punishment has caused untold suffering and increased the need for shelter and NFI among others.

Within the month of June, an estimated additional 630 households were reported to have been displaced in the North West and South West. There is a need for livelihood support programs that can improve the lives of IDPs in rural areas, since the mostly agrarian communities have not been cultivating for several months now. More so, they lack food, potable water and core relief items such as mosquito nets, mattress, warm clothing, blankets, and cooking utensils

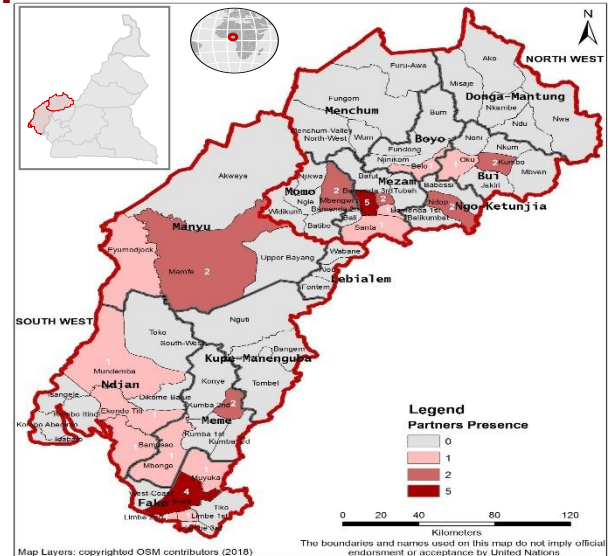
For those living in urban settings, there should be a livelihood scheme that will make the displaced people autonomous and will be able to take care of themselves since the response to specific protection needs are slow to come by. This could also make vulnerable women and girls refrain from negative coping mechanisms.

RESPONSE

- Approximately 64,569 people have now been reached with shelter assistance. More than half of them with light shelter kits (tarpaulin and rope, without tools), while less than 40% have received standard shelter kits.
- Most organisations provide a hybrid package made up of both Shelter and NFI items.
- Since the beginning of the response this year, approximately 74,751 people have been supported with NFI assistance.
- Shelter/NFI response in the NW is significantly smaller compared to the SW due to inaccessibility and insecurity.
- There has been a noticeable willingness to allow humanitarian aid by the warring parties especially the None State Armed Groups. As such, more organisations have been able to go to the field

GAPS & CHALLENGE

- The volatile and unpredictable security situation hampers access to some locations of IDPs and affected communities, particularly those hiding in remote areas and in the bush
- Numerous Ghost town and lockdown days enforced by None state armed groups significantly hampers field work and distributions.
- Administrative bottle necks caused by the recently created government agency to manage humanitarian activities is seriously affecting the flow of relief items to the people of concern



CLUSTER TEAM

Shelter Cluster Coordinator
Ibrahim Mahamat Alhadi
NWSWCameroon@sheltercluster.org
mahamati@unhcr.org
(+237) 699805749

Shelter Cluster Information Management Associate
Ivo Meh Kum (UNHCR)
im.cameroon@sheltercluster.org
mehkum@unhcr.org
(+237) 699906800

KEY DATES

On the 17th of October 2018, the Shelter/NFI Cluster was activated for the South-West and North-West regions of Cameroon, together with 7 other clusters, to support the response to the crisis occurring in both these regions. The Shelter/NFI Cluster SWNW Cameroon is led by UNHCR. The Cluster was established in Buea in October, and a mirror hub was setup in Bamenda, in December 2018

KEY DOCUMENTS

- [Shelter/NFI Cluster Strategy](#)
- [SWNW Cameroon Minimum NFI Kit](#)
- [SWNW Cameroon Minimum Shelter Kit](#)

KEY LINK

<https://www.sheltercluster.org/response/cameroon>

RESPONSE AGAINST TARGET

