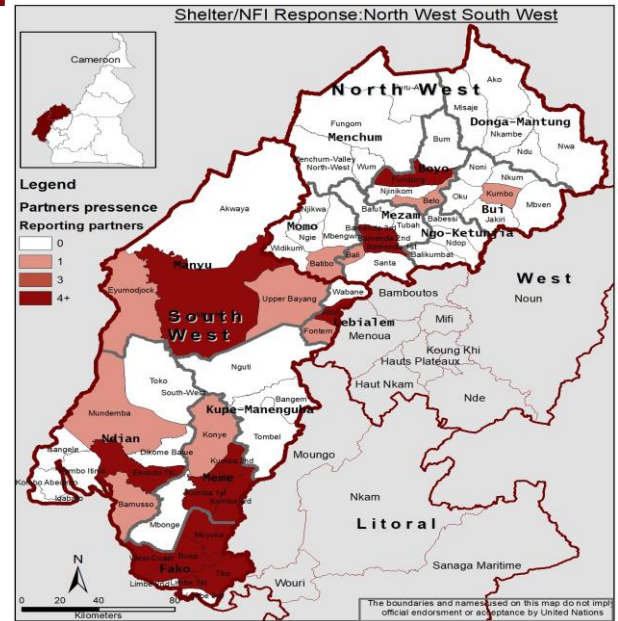




IDP needs assessment at Tiko SW Region: ©UNHCR April 2019



**NEEDS ANALYSIS**

The humanitarian consequences of the crisis in the North West and South West regions of Cameroon continue to be a call for concern even as it is considered among the most neglected crisis the world is experiencing. The civilian population continue to bear the brunt of this crisis as many have been forced to flee their homes into the bushes or to some neighbouring urban centre. The need for humanitarian assistance is increasing as the clashes intensify within the different regions.

Continues arson attacks on houses and properties by the warring parties is creating a persistent need for shelter and NFI by the unfortunate population caught in the middle of this crisis. Some IDPs seeking refuge in some urban areas have been evicted by their landlords due to their inability to pay rents. This has prompted the shelter cluster to workout modalities for Cash Based Interventions (CBI) to meet the needs of some IDPs. IDPs in the Rural areas have also complained frequently about the lack of food, medicines and potable water as well as NFIs such as mosquito nets, mattress, warm clothing, blankets, cooking utensils etc.

Humanitarian organisation nonetheless have been able to reach some communities in both regions with assistance in kind. However, the situation is being compounded by reports of some humanitarian aid being targeted and destroyed in the course of delivery and after.

**RESPONSE**

- 8,904 persons received NFI assistance in the month of October.
- A total of 84,895 people have now been supported with NFI assistance since the beginning of 2019 in the NW and SW
- 11,541 individuals benefited from shelter assistance in October.
- A total of 77,510 persons have been reached so far with Shelter assistance since the beginning of this year
- More than 70 local organisations have benefited from capacity building in protection mainstreaming in shelter/NFI distribution.

**GAPS & CHALLENGE**

- Planned distributions are disrupted by multiple displacements of IDP's making it difficult to track, identify and monitor the response.
- There have been reports of humanitarian aid being burnt and destroyed on its way to beneficiaries and even after distribution.
- Funding for humanitarian response remains key to meeting the needs of the persons in need.

**CLUSTER TEAM**

Shelter Cluster Coordinator  
**Ibrahim Mahamat Alhadi**  
NWSWCameroon@sheltercluster.org  
mahamati@unhcr.org  
(+23 7) 699805749

**Information Management Associate**

**Ivo Meh Kum**  
im.cameroon@sheltercluster.org  
mehkum@unhcr.org  
(+23 7)699906800

**KEY DATES**

On the 17th of October 2018, the Shelter/NFI Cluster was activated for the South-West and North-West regions of Cameroon, together with 7 other clusters, to support the response to the crisis occurring in both these regions. The Shelter/NFI Cluster SWNW Cameroon is led by UNHCR. The Cluster was established in Buea in October, and a mirror hub was setup in Bamenda, in December 2018

**KEY DOCUMENTS**

- [Shelter/NFI Cluster Strategy](#)
- [SWNW Cameroon Minimum NFI Kit](#)
- [SWNW Cameroon Minimum Shelter Kit](#)

**LINK**

<https://www.sheltercluster.org/response/cameroon>

**RESPONSE AGAINST TARGET**



**NFI** 418,000 PIN      **NFI** 290,000 Target  
 381,000 PIN      265,000 Target

