

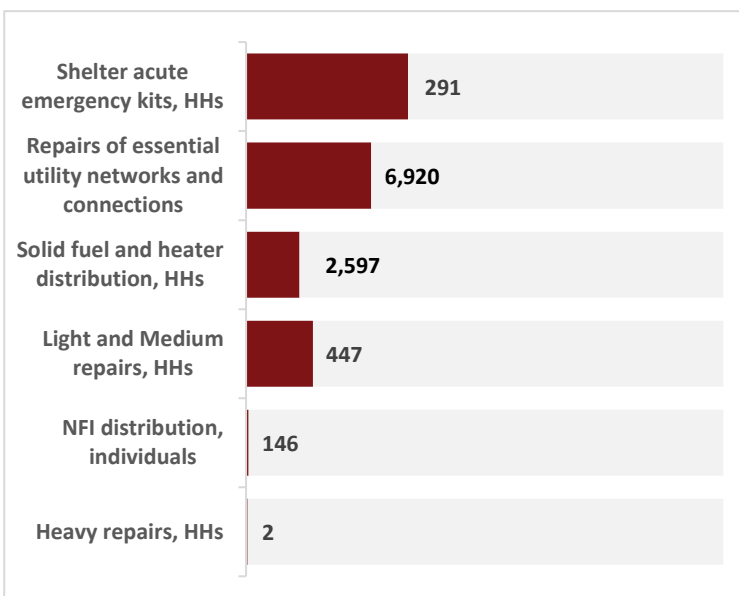


Damage assessment in Luhansk NGCA. Photo credit: UNHCR FU Luhansk

**Winterization 2021-2022.** The Cluster completed a detailed analysis of winterization needs and planned response in isolated settlements along the line of contact. In GCA (government-controlled areas), isolated settlements are the areas identified by the Cluster as a priority for the winterization response. In the 45 identified locations, 2,301 families were found in critical need of winterization support. Current partners' programmes plan to cover only 2/3 of the critical needs. The settlements with the highest gaps are [Staromariivka](#) (111 families) and [Vozdvyzhenka](#) (117) in Donetsk oblast and [Staryi Aidar](#) (268) in Luhansk oblast.

Consistently with the Cluster's recommendations for GCA - to limit humanitarian response to complementing state's assistance - the exercise considered the current programmes of subsidies for communal services and the purchase of solid fuel and gas. In the 0-5 km strip along the contact line, 4,700 families receive the subsidies; 770 of them live in isolated settlements

### Activity progress (Q2 2021)



### KEY DATES

In the second quarter of 2021, the Cluster held 1 online meeting on a sub-national level due to the COVID-19. In the same period the Cluster participated in various technical and coordination meetings related to the escalation of the conflict and reviewed its prioritized activities in a case if further escalation will take place.

Activation of Cluster: December 2014

### CLUSTER TEAM

Cluster lead agency: [UNHCR](#)

National Cluster Coordinator:

Sub-National Cluster Coordinator:

Sviatoslav Savchuk | [savchuk@unhcr.org](mailto:savchuk@unhcr.org)

### KEY DOCUMENTS

Shelter/NFI Cluster strategy [ENG](#)

Winterization Recommendations 2019-2020 [ENG](#) [RUS](#) [UKR](#)

Winterization campaign 2019-2020. Lessons learned [ENG](#) [UKR](#)

Monetization in the Shelter and NFI Sector in Ukraine [ENG](#)

Shelter Cluster Annual Report 2019 [ENG](#) [UKR](#)

Guidance on structural repairs and reconstruction [ENG](#) [UKR](#)

Technical Essay on Housing Situation in Ukraine [ENG](#)

Common cash PDM core questions [ENG](#) [RUS](#) [UKR](#)

Evaluation of the Shelter and NFI Cluster in Ukraine [ENG](#) [UKR](#)

COVID-19 Ukraine assistance delivery protocol [ENG](#) [RUS](#) [UKR](#)

Response strategy for the COVID-19 [ENG](#)

Addendum to Response strategy for the COVID-19 [ENG](#)

### KEY LINKS

[3W online submission form](#)

[Who is doing what where and when interactive dashboard](#)

[Housing, Land and Property TWIG](#)

[Portal of economic and social recovery](#)

[Ukraine Humanitarian Fund \(UHF\)](#)

### April-June at a glance

**174,000**

Total people in need

**119,314**

Cluster target population

**14**

Cluster partners

**2%**

Level of funding

Source: [HRP Ukraine 2021](#). 3W reports from partners. Cumulated figures for 2021  
Note: number of Cluster partners is calculated quarterly based on 5W reports which indicates number of humanitarian actors reporting to Cluster and operating in Ukraine in a particular quarter

**Government response.** The State Emergency Service of Ukraine (SESU) continues to repair houses damaged by the conflict in Donetsk oblast GCA. SESU has completed the repair of 400 buildings at the reporting date. The Shelter/NFI cluster continues to advocate for the activation of SESU in Luhansk oblast as well. On the 17<sup>th</sup> of June, UNHCR conducted a meeting with Luhansk oblast authorities to discuss the project. Parties agreed to choose Troitske, Zolote -4, Novooleksandrivka, and Stanytsia-Luhanska as pilot locations for assessment and shelter intervention. After the assessment, oblast authorities together with SESU Luhansk will compile bills of quantity for the construction materials needed for the pilot repairs; UNHCR may consider supporting the Oblast's programme through the in-kind supply of the needed material. In parallel with the house repairs, the compensation programme for destroyed houses is also ongoing. Local commissions continue assessments in both oblasts since the beginning of the year.

**New damages to residential buildings.** The shelter Cluster continues to track damages to residential premises, based on reports by partners and agencies in the field (INSO, OSCE, UNDSS). The total number of damaged houses in Q2 is 95, with the peak in May, with 59 damaged buildings. Almost 2/3 of the Q2 recorded cases - 60 out of 95 - occurred on the NGCA side of the contact line, reinforcing the overall statistic data throughout the years. The two most impacted settlements are [Donetsk city](#) (38 houses damaged), [Marinka](#) (11), and [Zolote](#) (10). Together, they hold almost 62 percent of damages for the reporting period.

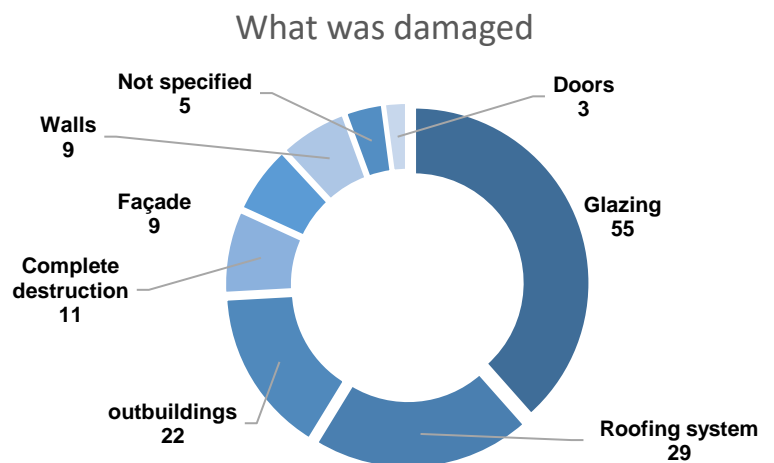


Figure 1. Count of damaged elements

The chart below shows the monthly trends in the number of new damages in comparison with 2020, 2019, and 2018. Similar to the previous years' records, also this year the peaks in the number of incidents took place in the middle of spring. The escalation of the conflict has a visible implication. The chart below demonstrates a gradual increase in the number of damages. Cluster partners registered a peak number of damages in May.

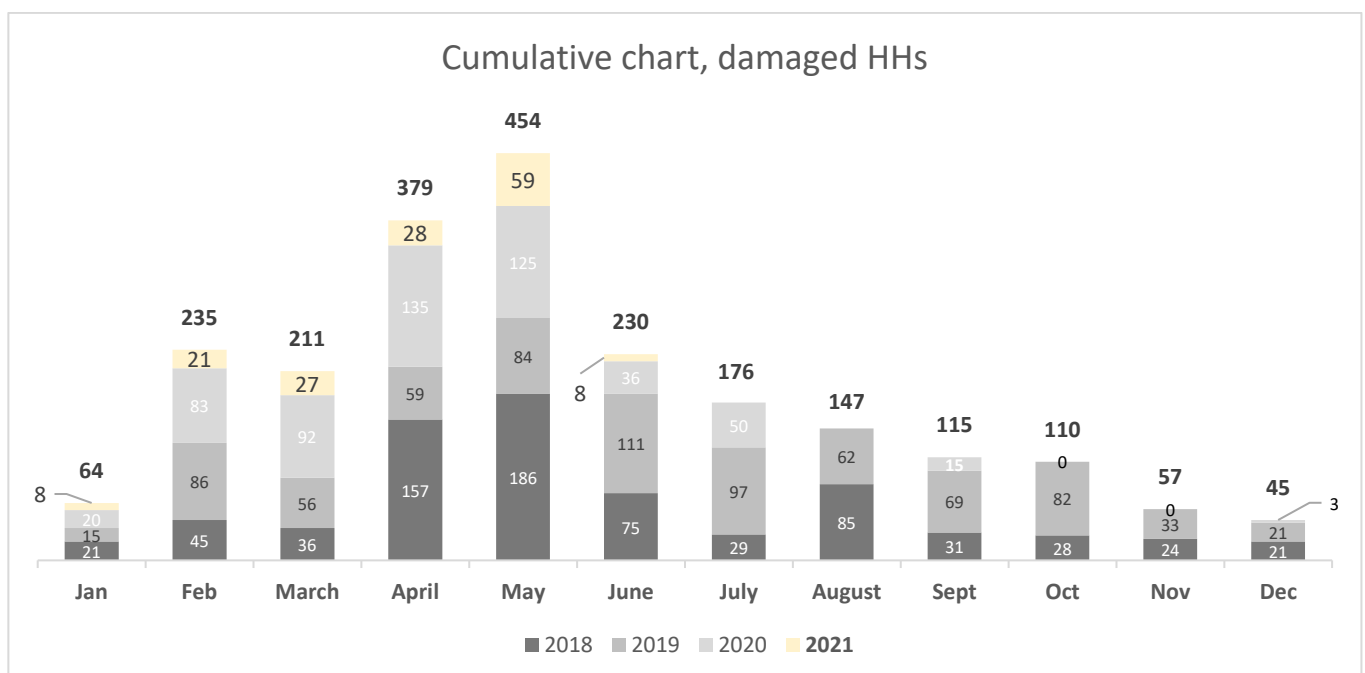


Figure 2. Comparison between 2018-2021 on the number of new damages per month