

Shelter & NFI monthly meeting

9 February 2022

1. Introduction

2. Updates from the Partners – NRC, IOM, DRC, CESVI, CEFA

3. Update from Sector – focus on data

- Dashboard for 2021
- New Activity Info for 2022
- Results of the CCPM
- Refugee and Migrant Accommodation

4. A.O.B



2. PARTNER UPDATE

- All shelter projects for 2021 have been completed.
- Third batch of housing rehab in Tripoli with a total of 138 housing units: work is ongoing and expected to be completed at the end of February.
- Developing BoQs, Scope of Works and technical documents for the fourth batch of 31 housing units in Tripoli is ongoing, work is expected to commence 3rd week of February.

Projects and targets for 2022:

1. Projects in partnership with UNHCR:

- Shelter rehab for HHs level in urban areas in Tripoli and Benghazi, targets are 50 housing units in each location
- Community infrastructure solutions in urban areas in Tripoli and Benghazi, targets are 1 infrastructure project in each location

2. Projects charged/in partnership with other donors:

- Shelter rehab for HHs level in the east with a total of 128 housing units
- Shelter rehab for HHs level in the west with a total of 78 housing units
- Community infrastructure solutions in the east with a total of 4
- Community infrastructure solutions in the west with a total of 4 projects
- Shelter rehab for HHs level in Tawergha with a total of 230 housing units

2. PARTNER UPDATE

1. NFI Assistance to Migrants in detention centers

- A total of 2,054 migrants (1,742 men, 138 women, 174 children) were assisted in ten DCs (Abuselim, Baten Al Jabal, Ain Zara, Aburashada, Gunfuda, Tarik Al Sika Albayda Shahat, Algobah ad Kufra).
- Items distributed include 2054 winter cloths, 2054 winter blankets, 2054 mattresses and 2054 HK

2. NFI Assistance to migrants in urban settings

- A total of 1,602 migrants in urban settings (825men, 230 women, and 544 children) in Gatroun and Sabha, Beni Walid, Ghat, Zuwara, Traghin, and Tripoli received HK, winter blankets, winter cloth, mattresses and HK

3. NFI Assistance to IDPs

- A total of 514 IDPs (177 male, 175 women, and 170 children) in Gasen Ben Gashir and Almeraj Mantikas
- Items distributed include blankets, mattresses, kitchen sets, solar lamps, Family HK, tarps, jerry can



2. PARTNER UPDATE

DRC

- **Ongoing/and Planned activities:**
 - **Ain Zara IDPs site:** (Ain Zara IDPs site-Aljdida) referred by Ain Zara municipality
 - **NFIs assistance:** 5HH received their assistance. **Distribution completed.**
 - **Ain Zara Returnees families:- (27HH)**
 - **NFI assistance:** 27HH out of 44HH been selected, **distribution completed.**
 - **Ain Zara Returnees/IDPs families – (60 HH) - referred by the municipality for NFIs needs**
 - **NFI assistance:** Assessment completed, 48HH out of 60 HH considered and distribution is ongoing.
 - **Soug Alahad IDPs site (60 HH):**
 - DRC Shelter is planning to conduct technical assessment for rehabilitation scope in the 3rd week of Feb 2022.
 - **Murzug IDPs population (60HH) - referred by OCHA**
 - **NFI assistance: Distribution activities completed**, total families supported **50 HH** while **10HH** were found **either live out of Tripolitania or not reachable.**



2. PARTNER UPDATE

DRC

- **Mix migrants Sites – Soug Aljoma area Site-1 (80 IND)**
 - **NFI assistance:** Distribution completed.
- **Mix migrants Sites – Soug Aljoma area Site-2 (17 IND)**
 - **NFI assistance:** Distribution completed.
- **Ateeb – Tarhuna IDPs site – Emergency response (4HH)**
 - **NFI assistance:** DRC Shelter received a referral from Shelter Cluster and was able to respond to the emergency need for Ateeb Site for 4 HH -17 IND.
- **AbuSalim Municipality – Supporting Returnees families**
 - DRC –Shelter is aiming to consider **30-40 HH** from Abu Salim for both **Shelter materials and Core NFIs** assistance. Assessment phase will may take place by **end of Feb 2022**



Activities in Urban areas of Misrata

- 237 Core NFI kit distributed
- 158 Supplementary (winter blankets / mattresses) NFI distributed

Reduced NFI distribution for the 1° quarter 2022

Labelled cash for rental support is ongoing – currently assisting 31 HH
(Non Displaced, IDPs, migrant and refugees)
Accounting for 160 individuals

2. PARTNER UPDATE



- 1. Distribution activities of FI Kit, Hygiene Kit and PPE in Zawiya:** on January 30th, 31st and February 1st and 2nd, the fourth monthly distributions of Hygiene, PPE, FI and SNFI kits took place in 4 different districts of the Municipality of Zawiya: **Juddaim, Arewie, Khartoum/Bu Ghalasha and Terfas. 140 Hygiene Kits, 140 PPE Kits, 140 FI Kits and 412 mattresses** have been distributed to **111 HHs** for the benefit of up to **406 beneficiaries** among migrants, refugees and asylum seekers in urban settings.

Distribution Area	Hygiene Kits			PPE		Food		SNFI	TOTAL
	Family	Male indiv.	Female ind.	Family	Individual	Family	Individual	Mattresses	
Arewie	10	7	1	10	8	10	8	51	105
Juddaim	31	12	13	31	25	31	25	186	354
Karthoum/Bu Galasha	25	7	4	25	11	25	11	139	247
Terfas	3	27	0	3	27	3	27	36	126
TOTAL	69	53	18	69	71	69	71		832
	140			140		140		412	

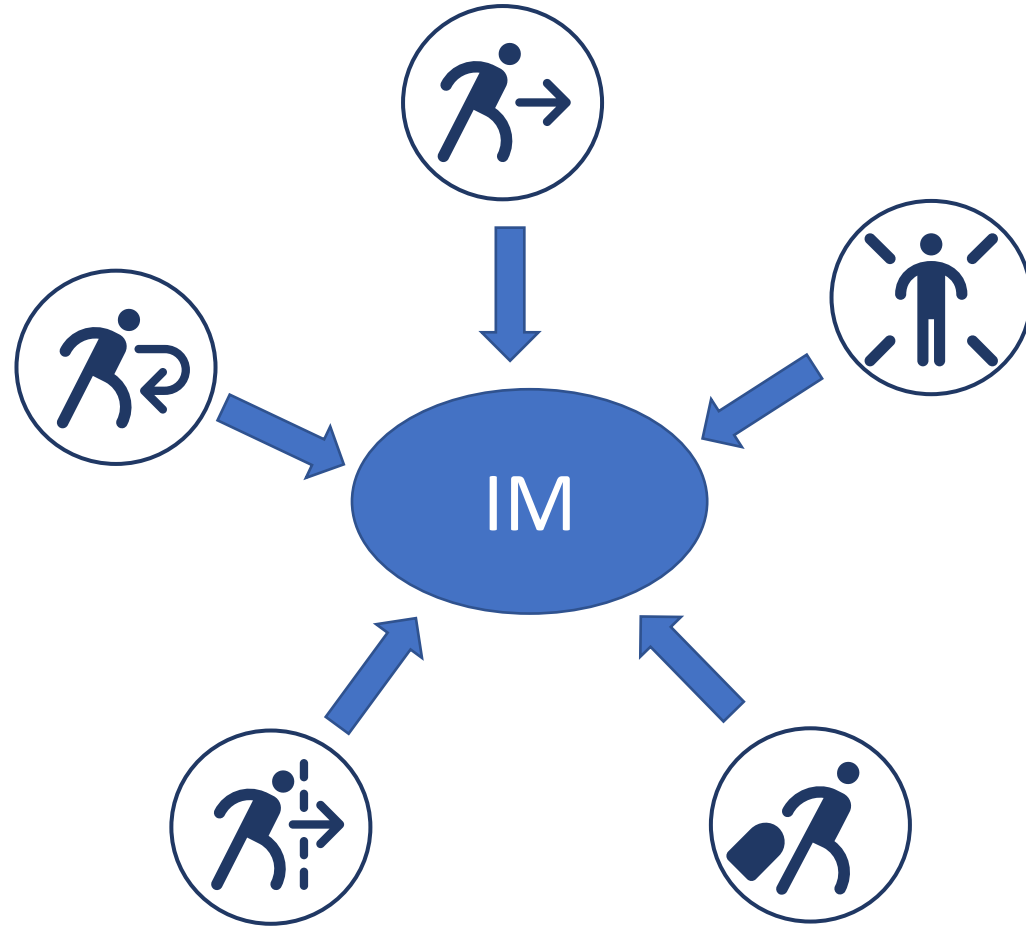
- 2. Humanitarian request of SNFI from Zawiya Municipality:** in response to the Humanitarian Request coming from Zawiya Municipality, targeting 254 vulnerable families in urban settings, considering the budget at our disposal, CEFA purposed to the Municipality to provide one distribution for 80 households (approx.. 350 individuals): if the municipality will agree, each household will receive 1 family SNFI Kit, 1 family Hygiene Kit, 1 family covid prevention PPE kit.



Updates from any other partners or stakeholders?



3. SECTOR UPDATE - IM



3. SECTOR UPDATE - CCPM

Cluster Coordination Performance Monitoring – CCPM

- Survey sent to 45 people who have attended a SNFI meeting in in 2021
- 45 included NGOs, INGOs, UN and donors - 19 responses

	Functional Area	2021 Score	Performance status 2021	2022 Comparison	Performance status 2022	2022 Official	Performance status 2022
1	Supporting service delivery	60.0	Satisfactory (needs minor improvement)	77.6	Strong	86.8	Strong
2	Informing strategic decisionmaking	55.0	Satisfactory (needs minor improvement)	85.5	Strong	85.5	Strong
3	Planning and implementing cluster strategies	90.0	Strong	76.3	Strong	85.3	Strong
4	Monitoring and evaluating performance	55.0	Satisfactory (needs minor improvement)	68.4	Satisfactory (needs minor improvement)	81.3	Strong
5	Building national capacity in preparedness and contingency planning	25.0	Weak	70.8	Satisfactory (needs minor improvement)	70.8	Satisfactory (needs minor improvement)
6	Supporting robust advocacy	50.0	Unsatisfactory (needs major improvement)	61.8	Satisfactory (needs minor improvement)	73.4	Satisfactory (needs minor improvement)
7	Promoting accountability to affected populations	35.0	Unsatisfactory (needs major improvement)	59.2	Satisfactory (needs minor improvement)	75.0	Strong



3. SECTOR UPDATE - CCPM

SNFI cluster during 2021 was very well coordinated and performed

*The Cluster is one of the most active in Libya and is also active in cross-cluster inputs and collaboration which is key. Some guidelines/standards created are not always applicable to the Libyan context, **for migrants**, so more work could be done in defining the **basic minimums for working with migrants in Libya**. But overall, the fact sector guidance is being produced and shared is great. The cluster takes a lot of initiative and is organised, it's overall a good group to be a part of.*

It is one of the most efficient cluster I have ever worked with.

In my opinion, 2021 was a productive year, strong coordination between the INGOs that was led by the SNFI - cluster monthly meetings created a good chance for the INGOs, Donors and others to have a good idea about the activities and types of support.

*It would be great when any partner is using **new implementation modality** (i.e., cash for Shelter etc), to share the lessons learnt, recommendation. By this, we should be able to expand our modalities and be more agile.*

*Focus more on areas of intervention and **coordination between INGOs to avoid any possible duplication***



3. SECTOR UPDATE

Following the 2020/21 CCPM, a 36 activity workplan was produced to guide the Sector and enable SAG to monitor progress.

36 activities of which:

- 26 – 72% completed
- 10 – 28% ongoing, reviewed and carried forward to 2022 if needed

Example of 10 not completed:

a. Inter-actions with Government

b. Conduct training needs assessment / Capacity Gap analysis

SINFI Libya Workplan 2021 v1						
These SINFI key priority areas will help the sector to become more effective and responsive to the needs of the beneficiaries and functional and operational to the partners and humanitarian actors. It will be reviewed regularly and an emergency response will be triggered.						
SN	Activity	Description	Responsible	Timeline	Progress / comments	Stat
1 Supporting partner delivery						
	Personnel Support	Deployment of IM dedicated to the Sectors	UNHCR	From Feb	Completed, Realigned	
		Deployment of Sec. Translator dedicated to the Sectors	UNHCR	March - April	IMM Mobilized but pending - translation of the SOPs	
	Sharing info	Organize regular and ad-hoc SINFI meetings	Coordinators	Monthly / ad-hoc as necessary	Shared/Underway of the month	
		Participation in other sector and ad-hoc meetings	Coordinators and partners (as relevant)	As needed	Participating in Protection, WASH, CBM, Needs Working Group	
	Engaging with stakeholders	Update the ISG/WCT, donors and humanitarian community of large-scale SINFI activities	Coordinators	As needed	Monthly update between CBM, Protection, SINFI and UNHCR sector management	
		Promote diversification in the attendance to the SINFI meetings (local organizations, private sector, academia, etc.)	Coordinators and partners	To be planned	One to one briefing with UNHCR held, included in Sept. meeting with translation provided by IM and available	
	Building Evidence	Engagement of development actors (UNDP, UNHABITAT)	Coordinators	ongoing		
		Provide feedback to the partners on operational policies, standards, needed information, etc.	Coordinators	as necessary	UNHCR/ASG regularly attend SINFI meeting, updated with UNDP through Needs	
2 Informing strategic decision-making						
	SOPs for Evacuation	Development of SOPs for routine evacuation and mobilization, jetties with PS and G.HLP	ETF	Jan-2021-March 2021	Through routine taskforce.	
	Shelter solutions for HRA	Guidance note for shelter solutions for migrants, refugees and AS-SOP for identified options	TWIG	May-21	Published and agreed with SRG and in the SOPs. Share them and the definitions, following Briefing Paper explore options in light of the shelter definitions	
	Water, Sanitation and Hygiene	Develop guidance note and working model of water-safety criteria for the SINFI sector to practitioners and agencies implementing activities	SAG	Done - to be presented in March	Done and by HRC.	
	Humanitarian and HFI	Guidelines for HFI standardisation and harmonisation - individual and family kits	TWIG	Jan-21	Completed, V2 published.	
	COVID prevention measures	Adapt/develop guidelines for COVID prevention measures aligned with WHO recommendations, IMSC	SAG-TWIG-partners	Apr-21	Global library already in to be published as update	
3 Planning and implementing cluster activities						
	CCPM	Provide Monitoring Review	Partners & Coordinator	Jan-Feb 2021	Completed	
	HRC timeline	HRC	Partners & Coordinator	Jan-21	Completed	
		HRP (HRP-SM)	Partners & Coordinator	Sep-21	Completed	
	Coaching methodologies	Develop the self-help tools for the SINFI activities in line with the existing methodologies as defined in HRP 2021	Coordinators-SAG	Aug-21	Not started but will be useful as shared resources	
	Gap Analysis	Identification of needs, gaps and opportunities through knowledge use analysis and prioritisation	Coordinators-IMO-SAG	Sep-21		
4 Monitoring and evaluating performance						
	Information Products and Analysis	RfIs and regular update of SINFI Dashboard, Factsheets, maps	IMO	monthly	Include Global Cluster update. Agreed with IMO to have the HR Dashboard - Global/Needs-SP	
		Regularly update overview of needs, opportunities, gaps, progress and achievements	IMO	quarterly		
		Development of thematic maps on coverage, gaps, partners progress	IMO	as going	New Dashboard and mapping	
		Service mapping: SINFI dedicated sub-platform	IMO-partners	as going	SINFI service will and take part in 2021 while Protection sector remains	
	Reporting	Essays reporting against the HRP through existing standard channels (PTI included)	Partners	monthly		
		Update the Sector mapping	Partners-IMO	as necessary	Not started	
	COVID		Partners-IMO-OCRA	monthly	SAG agreed to have a library page on the website - done	
	Humanitarian Response		Partners-IMO-OCRA	monthly	Not started	



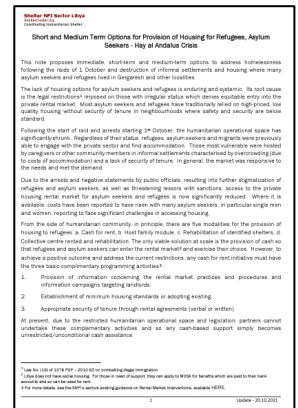
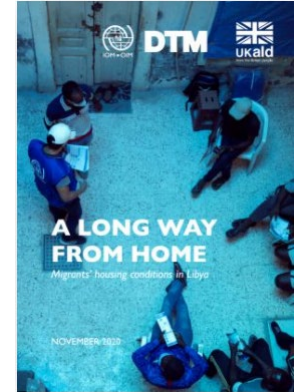
3. SECTOR UPDATE

We now have a growing data set on refugee and migrant accommodation:

- [DTM – Long way from Home \(November 2020\)](#)
- [REACH – MSNA Qualitative research \(January 2022\)](#)
- Regular DTM monthly reports

Sector Briefing note [HERE](#).

We need more understanding of the systems and processes that govern how refugees and migrants engage with the rental market.



3. SECTOR UPDATE

Our Guidance

Strategic Operational Framework



CONTENTS

1	Introduction	1
1.1	Strategy Document	1
1.2	Leadership and Structure	1
1.3	Coordination Team	2
2	Situation	2
2.1	Historical Context	2
2.2	Mid-Year 2021 Review	2
3	Country Level Strategy	5
3.1	Who do we serve?	5
3.2	2021 HRP	5
3.3	Shelter Sector Objective	5
4	Work Plan	6
5	Response Plan	7
5.1	Shelter for IDPs, Returnees and Host population	7
5.2	Shelter for Refugees, Asylum Seekers and Migrants	8

5.3	NFI for IDPs, Returnees and Host population	9
5.4	NFI for Refugees, Asylum Seekers and Migrants	9
5.5	Infrastructure	9
6	Monitoring and Evaluation	10
7	Key Cross-Cutting Issues	10
7.1	Forced Evictions	10
7.2	Cash and Markets	11
7.3	Hygiene kits	11
Annex A:	2021 HRP Narrative	12
Annex B:	2021 HNO Narrative	15
Annex C:	Response Plan Table	17



<https://www.sheltercluster.org/libya/documents/strategic-operational-framework-snfi-sector-libya-v3>

AOB

Next meeting Wednesday 9th
March 2022 @ 11:00 Libya
(2nd Wednesday of the
month)



Photo: Safa Buzgeia, NRC – Sabri, Benghazi

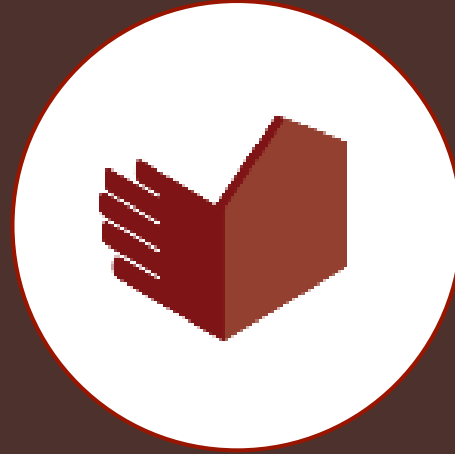


Shelter NFI Sector Libya
ShelterCluster.org
Coordinating Humanitarian Shelter

Shelter NFI Sector Libya

ShelterCluster.org

Coordinating Humanitarian Shelter & NFI



Thank you

SNFI Sector Coordinator
Richard Evans
evans@unhcr.org

SNFI Sector Co-Coordinator
Zaid Al Jabari
zaid.aljabari@nrc.no

SNFI Sector IMO
Awat Salih
salihaw@unhcr.org

SNFI Translator
Ali Abdullatif
abdullat@unhcr.org

3. SECTOR UPDATE

Strategic Workstreams



SW1- Shelter – pathways to reconstruction



SW2- NFI - Cash vs in-kind modality for EHIs



SW3– Settlements – informal mapping and coordination

