



International Organization for Migration (IOM)
The UN Migration Agency



Global Shelter Cluster
ShelterCluster.org
Coordinating Humanitarian Shelter

SHELTER/NFI SITE REPORT:

FLOOD EMERGENCY IN BURUNDI, MAY 2018



NEEDS ASSESSMENT

On 27 April, IOM, the UN Migration Agency's Displacement Tracking Matrix (DTM) team raised an alarm about flash floods in Bujumbura Rural region of Gatumba following heavy rainfall in the area. Gatumba region is prone to flooding mainly due to overflows from River Rusizi.

Data obtained by the DTM in April 2018 provides the total number of internally displaced persons (IDPs) present throughout Burundi's 18 provinces, the number of emergency related displacements occurring during the month and the reasons for displacement. These figures exclude the more than 75,000 people affected by emergency events since January 2018.

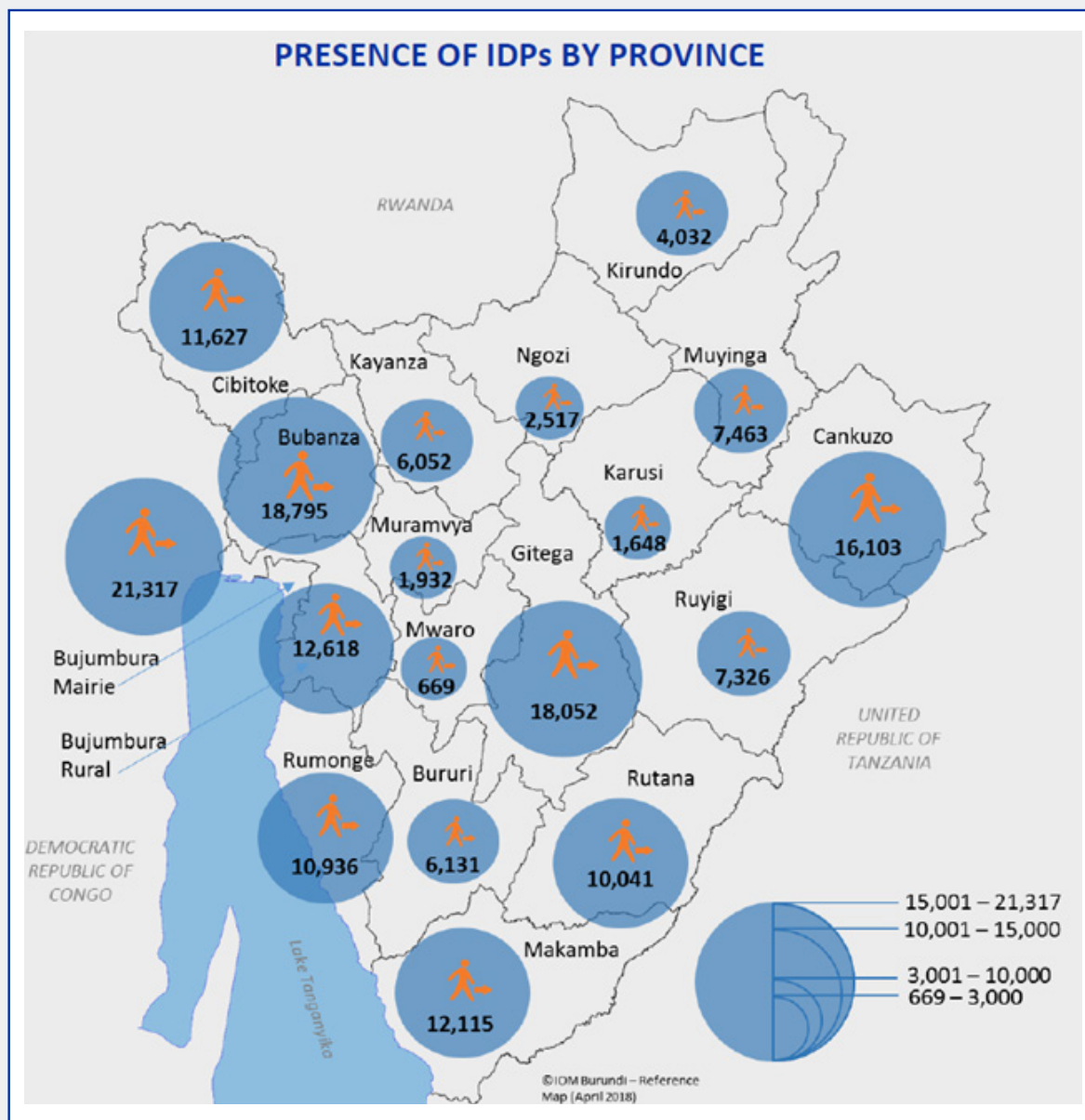


Figure 1 Presence of IDPs by province, Source: April 2018 DTM Dashboard, Burundi

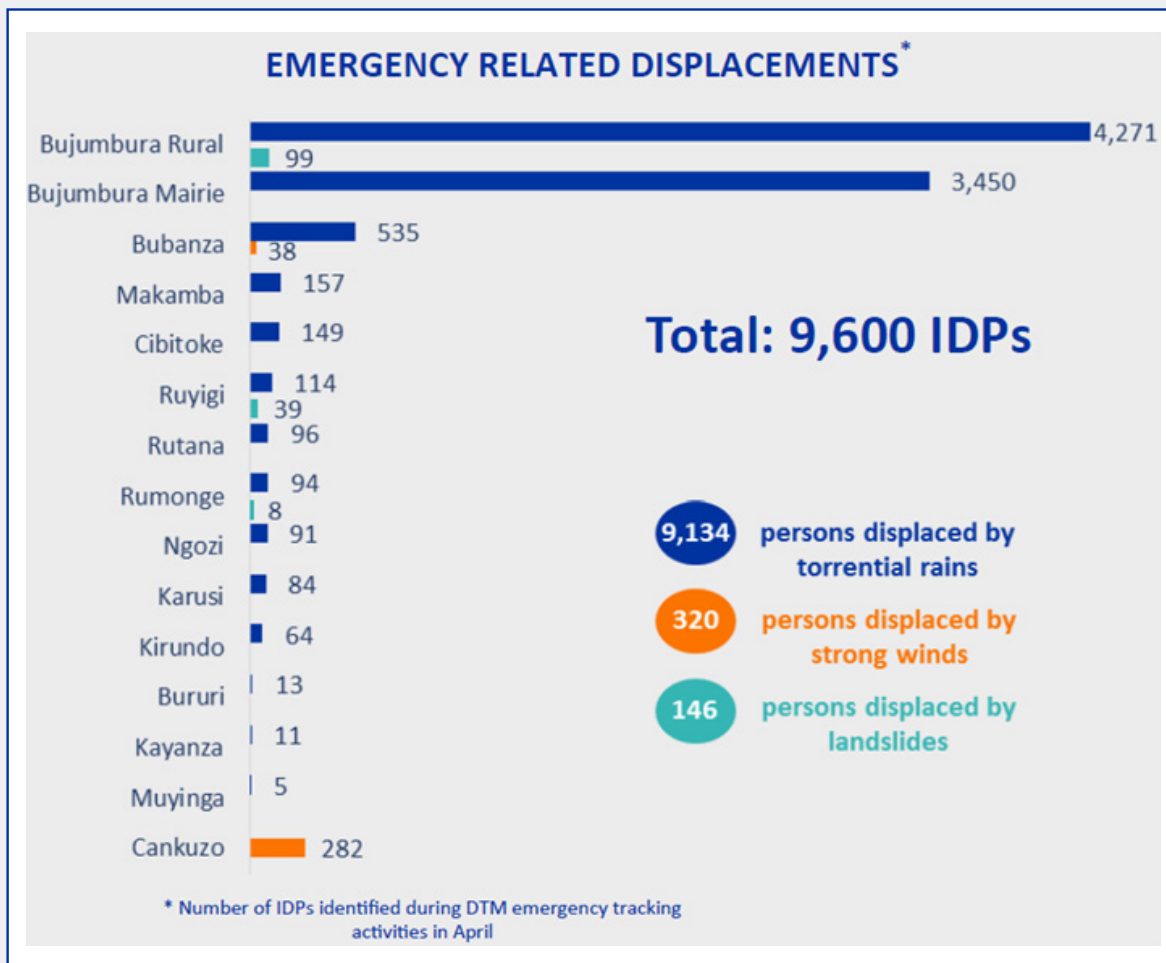


Figure 2 Number of Emergency related displacements in Burundi in April 2018, Source: April 2018 DTM Dashboard, Burundi

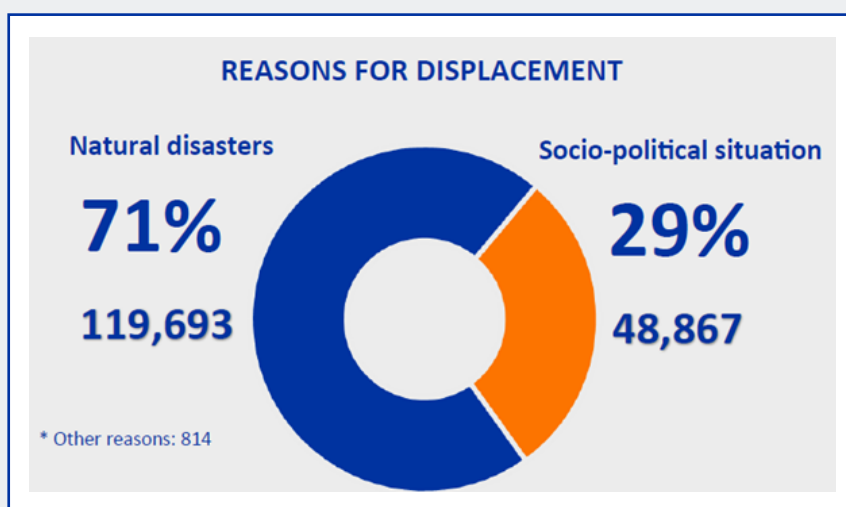


Figure 3 Reasons for displacement in Burundi, Source: April 2018 DTM Dashboard, Burundi

IOM and the inter-sector group conducted a needs assessment and evaluation. The table below summarizes the main damages recorded in the month of April:

| Province | Commune | # Houses destroyed | Total # of houses affected | # People affected |
|-----------------|------------------------------------------------|--------------------|----------------------------|-----------------------|
| Bujumbura Marie | Buterere and Sabe (numbers to be confirmed) | 325 | 511 | Approx. 3,000 IDPs |
| Bujumbura Rural | Gatumba | 504 | 2,133 | 12,956 |
| Makamba | Nyanza-lac | 187 | 1,186 | Approx. 7,000 |

NFI/Shelter Sector Response

NFI

From January to March 2018, the NFI/shelter sector Group has been working to strengthen its capacity to respond to emergencies within the first 72 hours of their occurrence. The NFI/shelter sector's stock of supplies increased to 383 complete NFI kits and 227 non-complete NFI kits. These kits were donated by Care International, World Vision International and IOM. However, there remains a lack of mosquito nets, blankets, plastic mats and kitchen sets.

During the last week of April, the flooding caused by rain in all the lakeside areas reached the level of an emergency.

After holding several meetings, the NFI/shelter sector in Burundi, composed of 11 local and international NGOs, 2 UN Agencies and the Government, responded to the emergency during the first week of May. The response included the provision of 383 Non-Food Item (NFI) kits in Buterere to families that had completely lost their houses to the flood waters.

UNHCR—through its implementing partner International Rescue Committee—donated 50 family tents, 200 blankets, 100 jerry cans, 50 kitchen sets, 200 plastic mats and 100 mosquito nets, helping to complete another 27 NFI kits to the NFI/shelter sector.

For appropriate response to the emergency in Gatumba, while at the same time abiding by the minimum humanitarian standards, the NFI/shelter sector must complete the 227 NFI kits currently stocked in IOM warehouses in Bujumbura. Of these, 27 have already been completed, thanks to the donation from UNHCR. At the National Platform meeting held on 18 May partners were requested for assistance in filling the remaining 200 NFI kits. The Burundi Red Cross and the Health Sector, led by the UN World Health Organization, committed to donate 600 mosquito nets, 600 plastic mats, 400 blankets and 178 kitchen sets to the sector.

On 24 May, the Red Cross and IOM will distribute the 227 NFI kits in the northern areas of Gatumba. The NFI/shelter sector might not be able to respond to future emergencies as it will have depleted its stock after this distribution.

Shelter

UNHCR, through its implementing partner, IRC, donated 50 family tents. These will be distributed to the most vulnerable households in the southern areas of Gatumba on 27 May.

IOM Response

NFI

In addition to the 383 NFI kits provided by the NFI/shelter sector, IOM is committing 278 complete NFI kits from its stock to be distributed in the southern areas of Gatumba and Kynynya II.

IOM will follow its internal Standard Operating Procedure (SOP), which requires a verified beneficiary list and a needs assessment, carried out by the Red Cross and the Inter-sector, led by OCHA. On the week of 21 May, IOM, will, in collaboration with the Organization for the Prevention and Intervention against Risks and Contingencies (OPIRCo), Civil Protection, local authorities and the Burundi Red Cross for, identify the most vulnerable households that fulfill the minimum IOM shelter assistance criteria.

Shelter

IOM has a stock of Emergency Shelters to assist the most vulnerable people affected by natural or man-made disasters. These shelters will be distributed and built following IOM's emergency strategy and SOP, with the collaboration of OPIRCo and the Burundi Red Cross, over the course of 15 days, starting from 24 May. The beneficiaries of this assistance will be the households with land titles who lived in those houses destroyed and who are considered extremely vulnerable. For this, IOM is committing 200 Emergency Shelters.

Minimum gaps to be covered

IOM and the NFI/shelter sector expect to cover for at least the minimum needs of the most vulnerable families in Makamba, Bujumbura Rural and Bujumbura Marie, including houses destroyed in-between all three locations. The inhabitants of 1,016 fully destroyed houses will receive emergency shelter in the context of this intervention, although there are more than 3,500 houses affected by the rains.

The following activities were identified as necessary in the first phase of the emergency:

- 1. Sludge and debris removal. The villages are covered in mud and there is the presence of stagnant water in all areas due to the water levels in the rivers. For health reasons, it is imperative to fix areas where water accumulates to destroy breeding grounds for mosquitos and the contamination of natural water reservoirs. A Cash-for-Work program will be implemented to remove the sludge and debris while trucks will be used to drain the swampy areas. The Cash-for-Work program will benefit some of the affected people. Women will comprise 70 per cent of the beneficiaries.**
- 2. Support to host families and/or rental support for 3 to 6 months. Majority of households whose shelters were partially or totally destroyed are living with host families or renting a house. Host communities will be supported to alleviate the burden of hosting affected households.**
- 3. Shelter repair kits along with construction materials, basic tools and cash transfers, will be provided to the beneficiaries in cases where the house structure is not compromised.**
- 4. The distribution of NFI kits will be complemented with Hygiene kits and Dignity kits from the corresponding Sector Group, to ensure the dignity and proper living conditions of the families. The inclusion of a mattress as an extra item is a fundamental need to be considered as all families have non-usable mattresses. Prior to any distribution exercise there will be a minimum one-hour training to encourage proper use of the items and to sensitize beneficiaries on hygiene, safe construction practices, etc.**
- 5. Sealing of all the latrines that were destroyed as a result of the floods. The second phase will include construction of new latrines after three months. This will also include the distribution of construction materials and a cash-for-work program.**
- 6. Reconstruction of water supply systems due to the rains, mainly in Buterere area. In Gatumba, it has been confirmed that the water supply system survived the emergency.**
- 7. Coordination activities with the Government of Burundi for the relocation of the inhabitants of flood prone zones and assisting in the development of a proposal to reduce flood related risks in the area.**
- 8. Cluster coordination, support throughout the three months of the project for the organization and development of meetings, coordination activities, travels and communication materials.**

The table below is a projection of what is needed to provide minimum assistance to vulnerable populations:

| Activities | Unit cost | Total cost |
|----------------------------------------------------------------------------------------------------------------------------------------------------------------------------------------|------------------------------------------------------------------------------------------------------------------------------------------------------------------------------|------------------|
| 2,000 NFI kits, including the 600 NFI Kits to replace the donation of partners to the NFI/shelter sector Group, distributed at the beginning of the emergency | \$95 per kit, including international transport and kitting | \$190,000 |
| 500 emergency shelters, including the replacement of the donations of UNHCR and Red Cross to the NFI/shelter sector Group, distributed at the beginning of the emergency | \$300 per emergency shelter and \$500 per family tent, including international and local transport* <i>*to be determined following thorough individual assessment</i> | \$150,000 |
| 500 to 750 cash grants for rental support, repairs for the partially destroyed houses or host family support* <i>*to be determined following thorough individual assessment</i> | Between \$60 and \$210, depending on the particular situation of each household and their needs. | \$105,000 |
| Cash-for-Work for sludge removal | \$ 7.50 per family | \$7,500 |
| NFI/shelter sector, distribution and extra transport costs | | \$12,500 |
| Operational costs | | \$163,500 |
| Minimum total cost | | \$628,500 |

To be able to provide shelter solutions to all the households affected by the emergency, the required amount of funding is approximately: **\$2,800,000.00**

