



# Nigeria Rapid Floods Assessment in Adamawa

In response to floods in some parts of Nigeria’s northeastern State of Adamawa, the International Organization for Migration (IOM) in collaboration with the National Emergency Management Agency (NEMA) and the Adamawa State Emergency Management Agency (ADSEMA) has conducted a rapid assessment to evaluate the current situation on the ground as part of its Displacement Tracking Matrix (DTM) Project. This report aims to capture the information gathered regarding the population affected by the floods for immediate response from partners willing to assist.

## 1. Location and population affected by floods:

**4,721** individuals (**747** households) have been identified as affected population due to the floods in seven (7) locations in Adamawa State, particularly from Yola North and Yola South Local Government Areas (LGAs). The assessed locations are: Bature, Damilu I & II, Jambutu Aso Rock, Rundebaru (Yola North) and Labare, Shagari and Yolde Pate (Yola South).

LGA - Ward	Households	Individuals
<b>YOLA NORTH</b>	<b>510</b>	<b>3,127</b>
JAM BUTU	510	3,127
<b>YOLA SOUTH</b>	<b>237</b>	<b>1,594</b>
BOLE YOLDE PATE	167	1,244
NAMTARI	70	350
<b>Total</b>	<b>747</b>	<b>4,721</b>

*Note: Data disaggregated by sex and demography is available for partners willing to assist affected population.*

## 2. Special needs:

**1,192** persons with special vulnerabilities (*see breakdown below*).

Special needs	Number of persons
Pregnant women	82
Lactating mothers	379
Unaccompanied minors	6
Separated minors	3
Persons with physical disabilities	44
Orphaned minors	83
Persons with mental disabilities	7
Single-female headed household	92
Elderly persons	364
Single-male headed household	61
Persons with chronic diseases/serious medical conditions	66
Single-child headed household	5
<b>Total</b>	<b>1192</b>

### 3. Immediate needs:

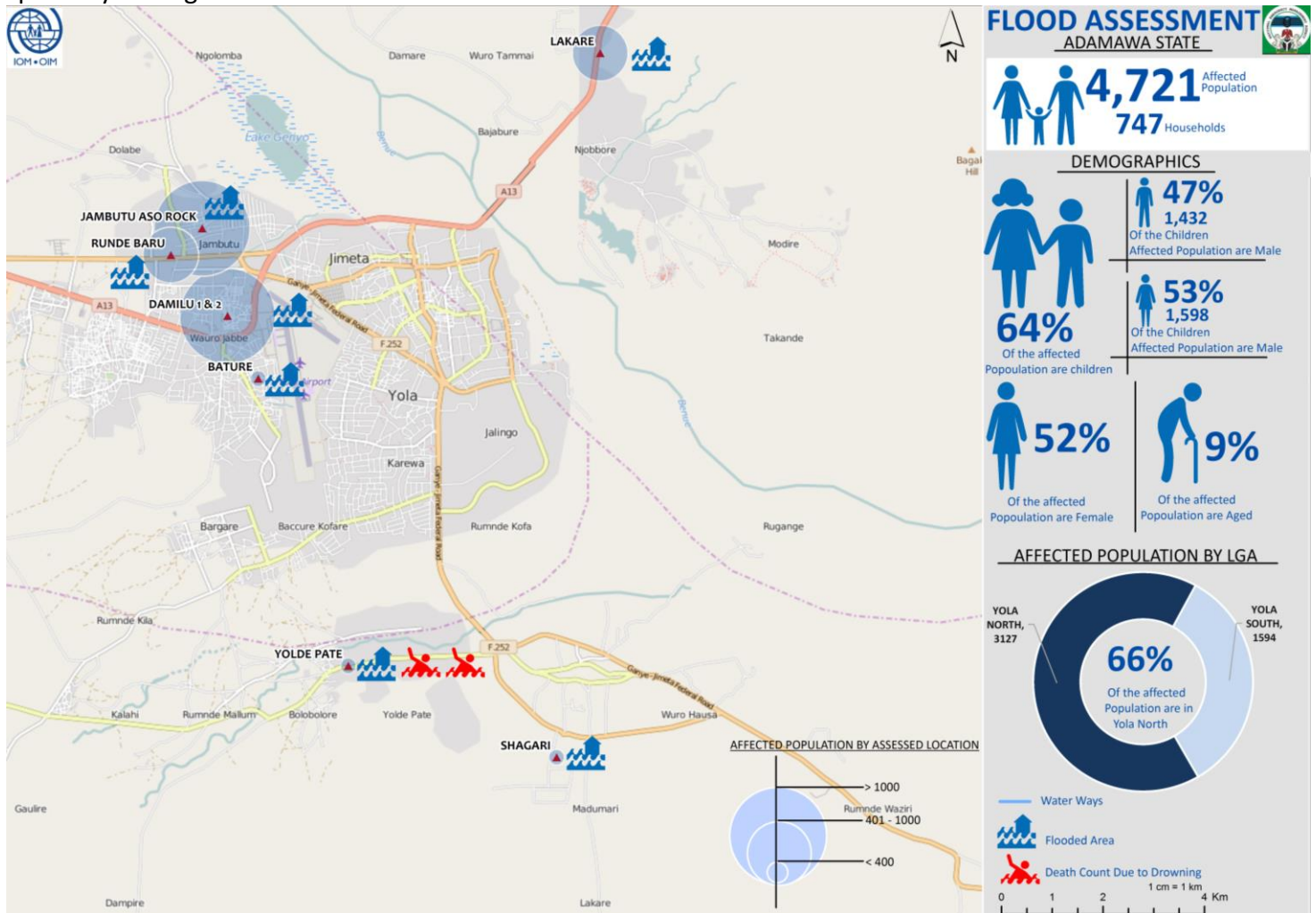
All the affected population (100%) during this assessment stated food/NFI as their primary need, followed by psychosocial support (26%) and water and sanitation (18%).

### 4. Status of affected houses:

All the affected houses are habitable but need repair. The type of repair needed is as follow: Damaged wall (73%), cracked wall (31%), damaged windows (25%), damaged floor (66%), damaged foundation (55%), painting (24%) and sand filling (26%). 75% of latrines are pit and 25% are indoor. 84% of latrines are flooded and need repair while 16% are undamaged.

### 5. Other direct impacts of floods:

Five persons have died including two due to drowning and six persons got injured as a direct consequence of floods. Loss of one hundred and twenty three animals (123) in four locations has been reported. Vegetation and crops are completely damaged in two locations while it was only partially damaged in three locations.



**Methodology:** The data presented in this report are the results of the rapid assessment conducted in some parts of Adamawa following the flooding through direct evaluations and interviews.