



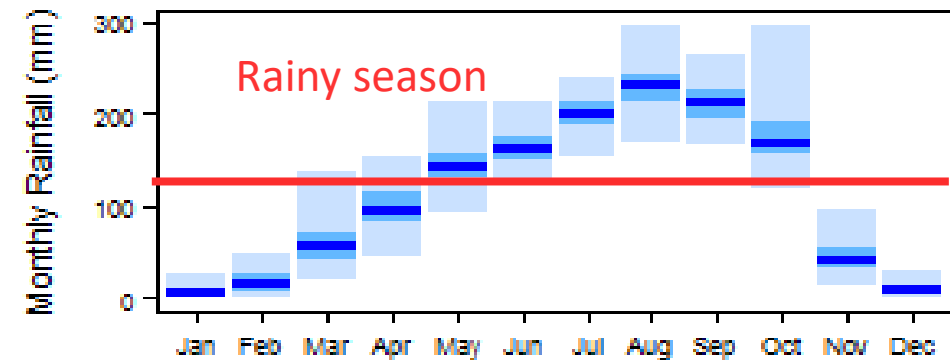
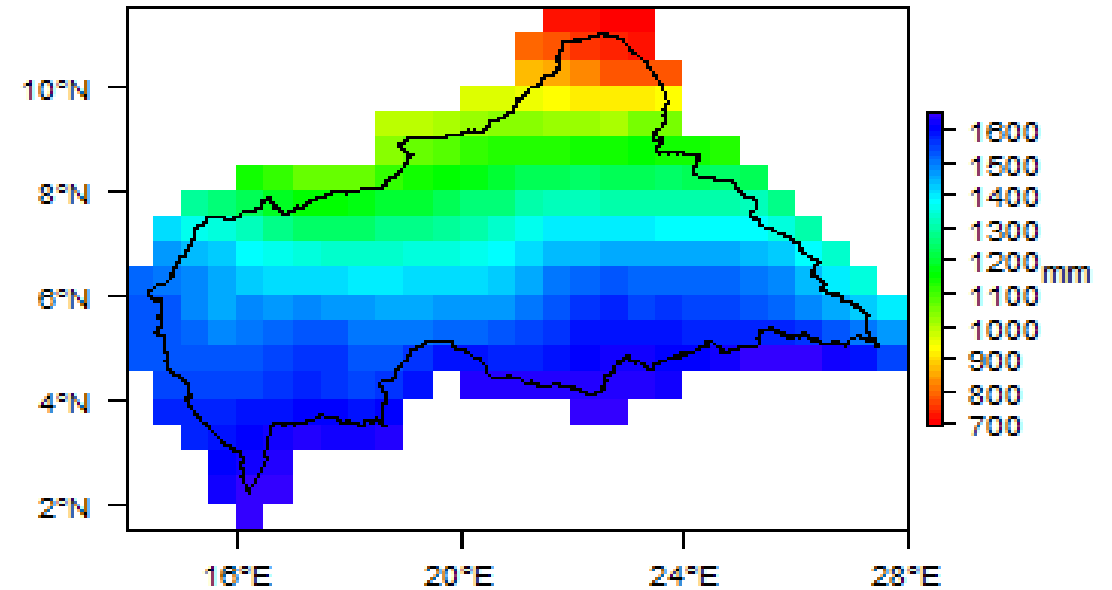
Country Presentations - Global Shelter Cluster Meeting 2021

## **CENTRAL AFRICAN REPUBLIC SHELTER CLUSTER**

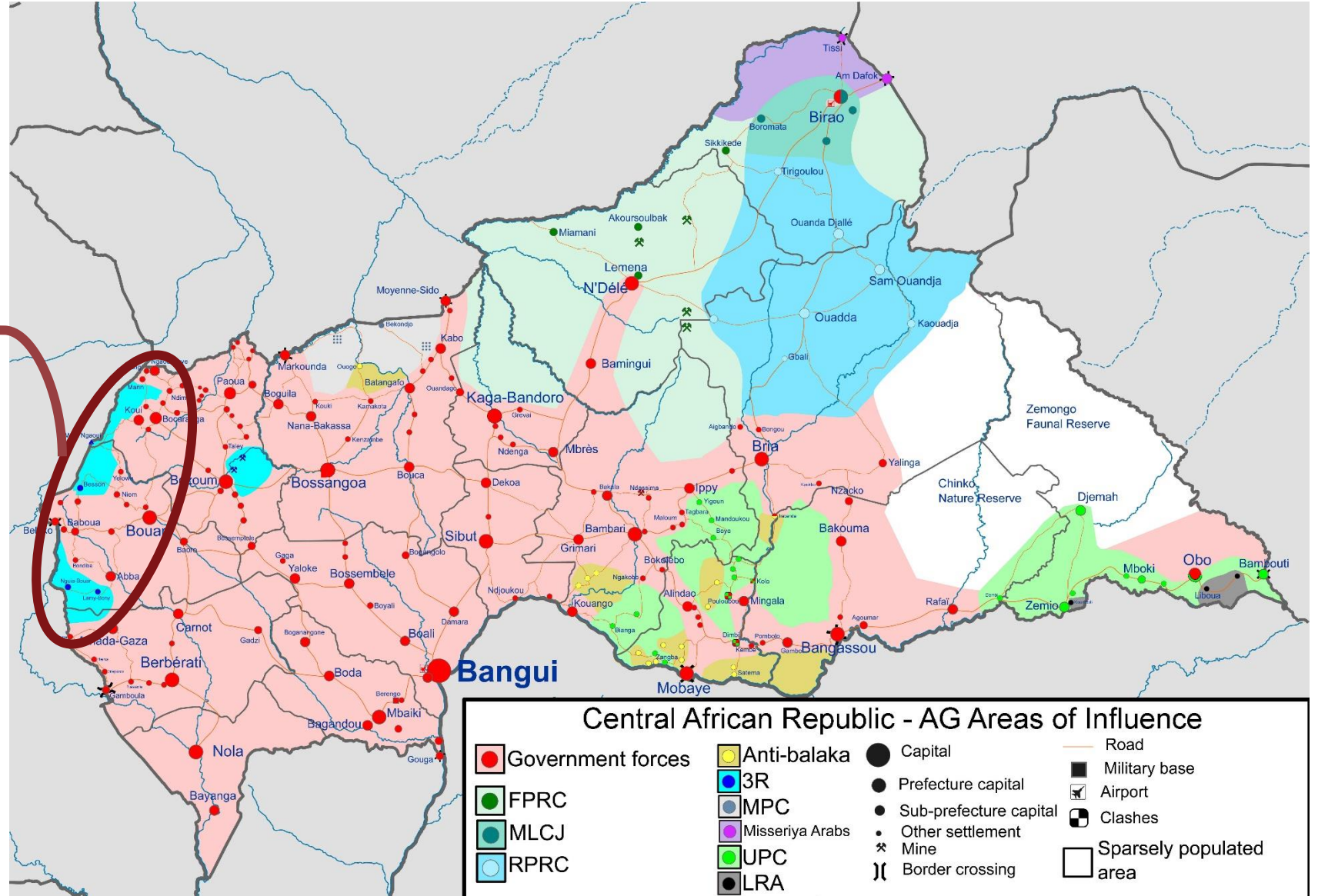
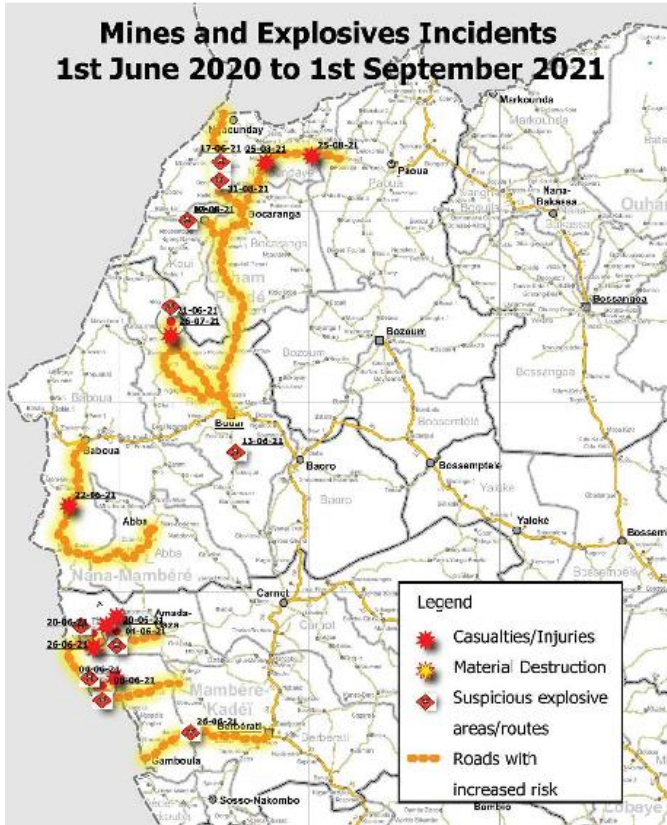
Wednesday 13 October – 14:00 CEST/13:00 WAT (Bangui)



# General Context - Climate profile in RCA



# General Context - Presence of Armed groups in RCA



New risk: use of mines as defensive approach by armed groups

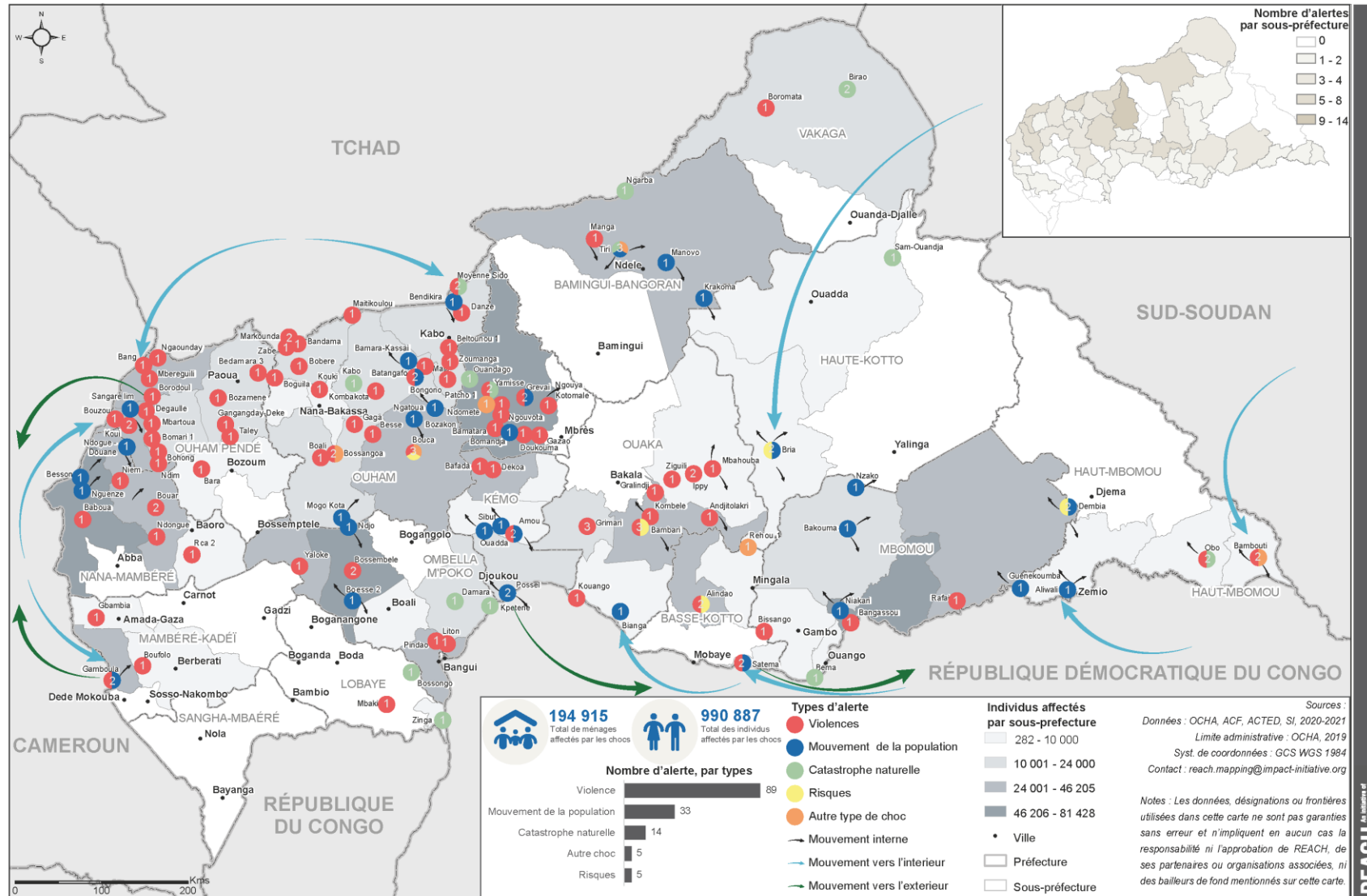
# General Context



République centrafricaine  
Aperçu des alertes RRM sur la période août 2020 - septembre 2021

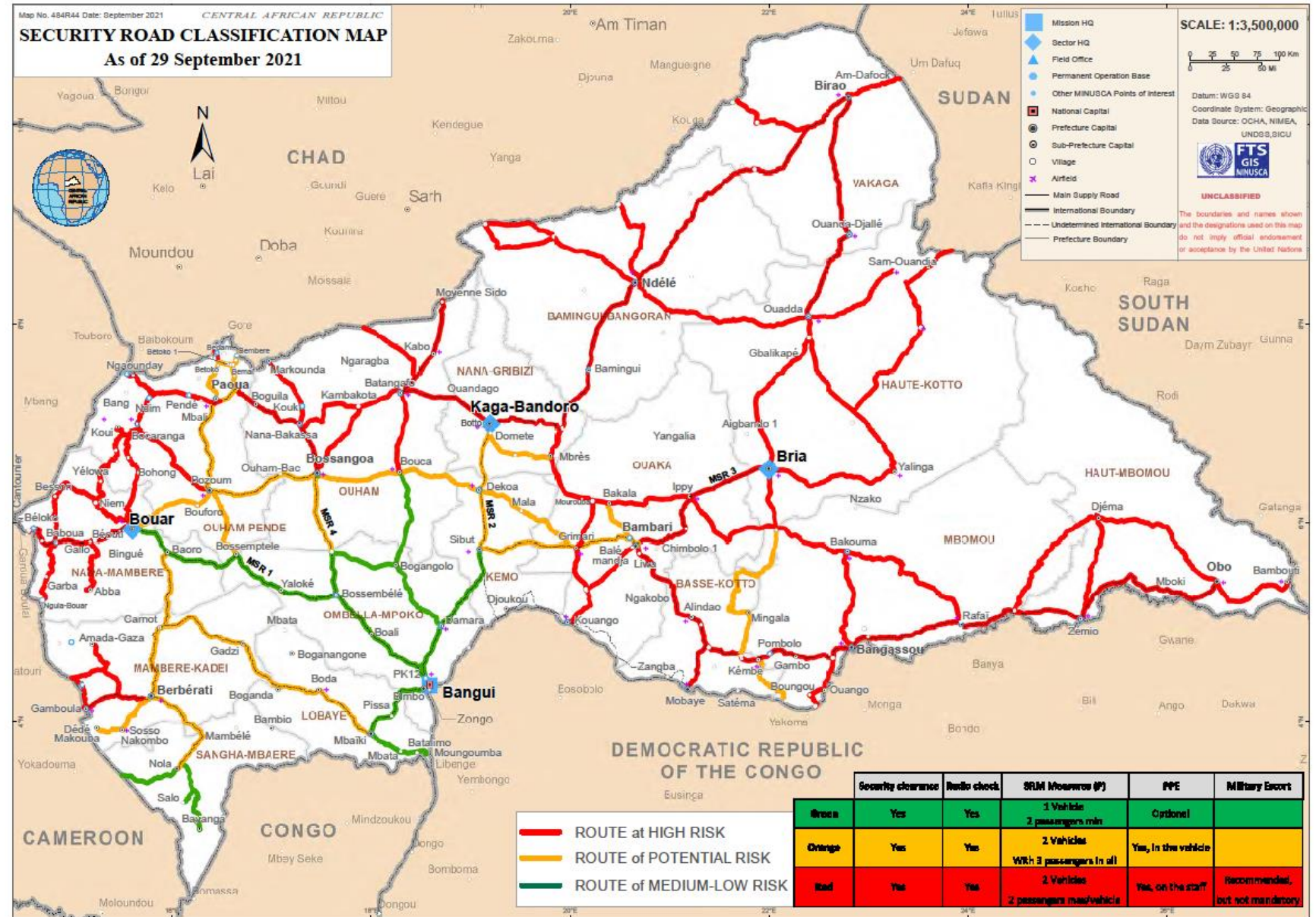
Pour usage humanitaire uniquement  
Production date : septembre 2021

## Localisation of RRM Alerts between August 2020 to Sept. 2021



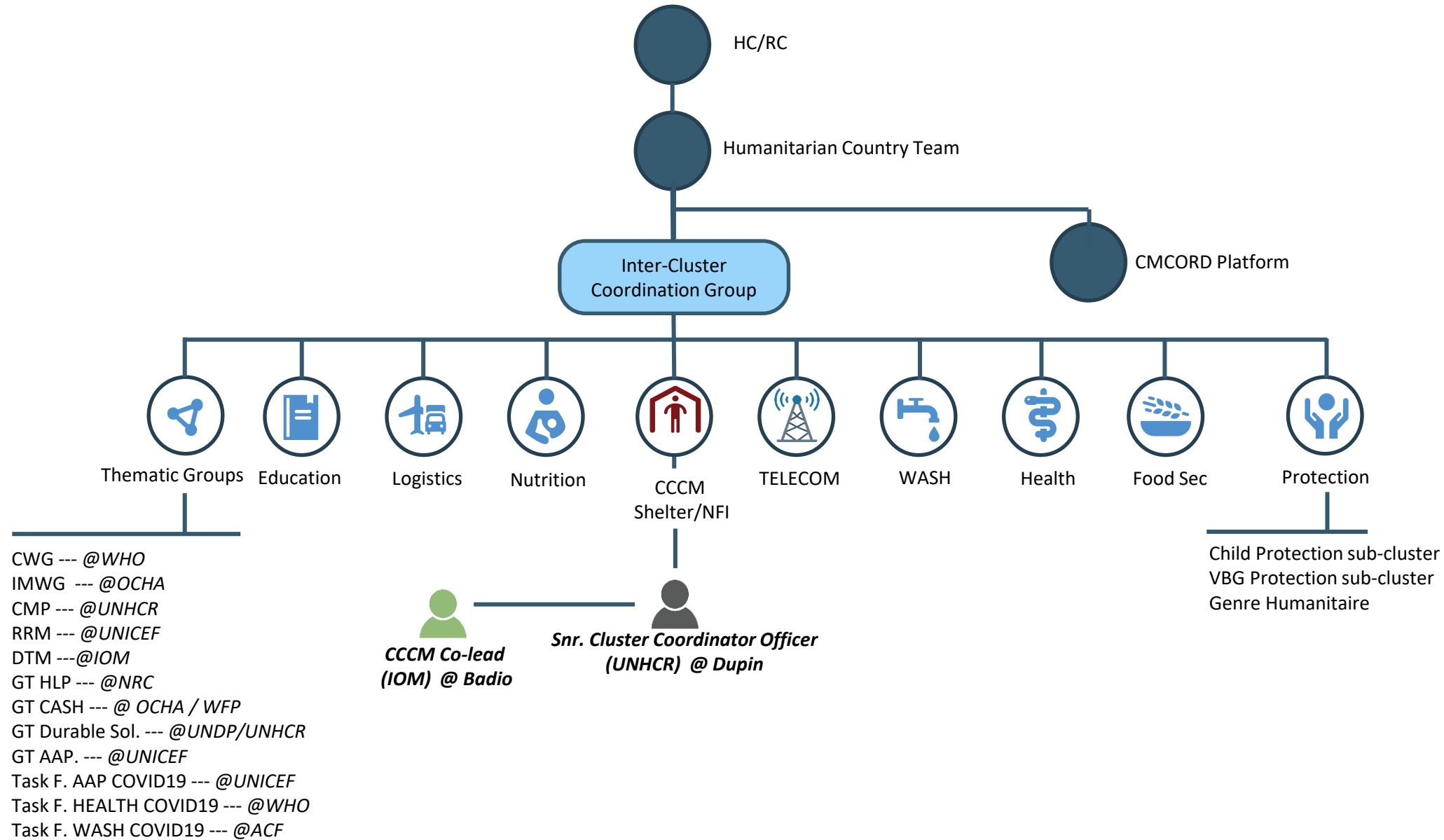
REACH  
Centre de données

# General Context



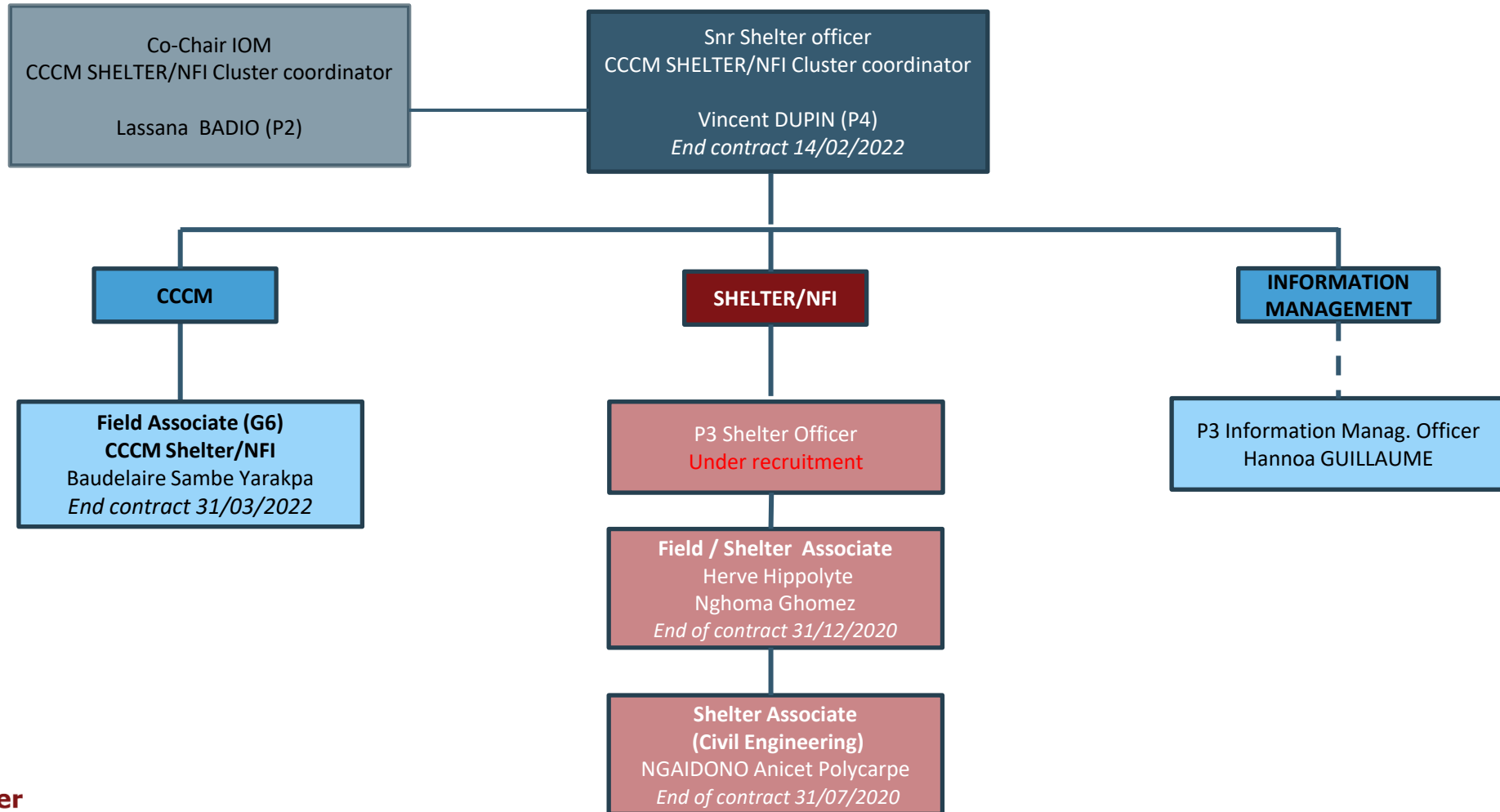
## Security Road Classification Map 29 Sept. 2021

# Organisation chart Inter-Cluster Coordination



# Organisation chart

## Merged CCCM Shelter-NFI Clusters



# Needs situation in 2021

## Response Overview

- ❑ Cluster activation in January 2014 under UNHCR's coordination (Lead) and OIM (Co Chair)
- ❑ Sectorial Objectives: access to NFI and shelters for on-site and CCCM assistance

Secteur	Personnes dans le besoin	Personnes ciblées	Fonds requis (USD)	Partenaires operationnels
CCCM/Shelter/NFI	1,1 M /2.8	0,448 M /1.9	\$20,8 M /444.7	20 / 183



		Per Category				
		IDP IN SITE	IDP IN H.F.	Retournes	Pers. in H.F. & none displaced pers.	TOTAL Persons
HRP 2021	Pers. In Need	211 K	431 K	74 K	385 K	1,1 M
	Pers. Targeted	147 k	271 k	10 K	20 K	448 K

# 2021 SECTORIAL STRATEGY



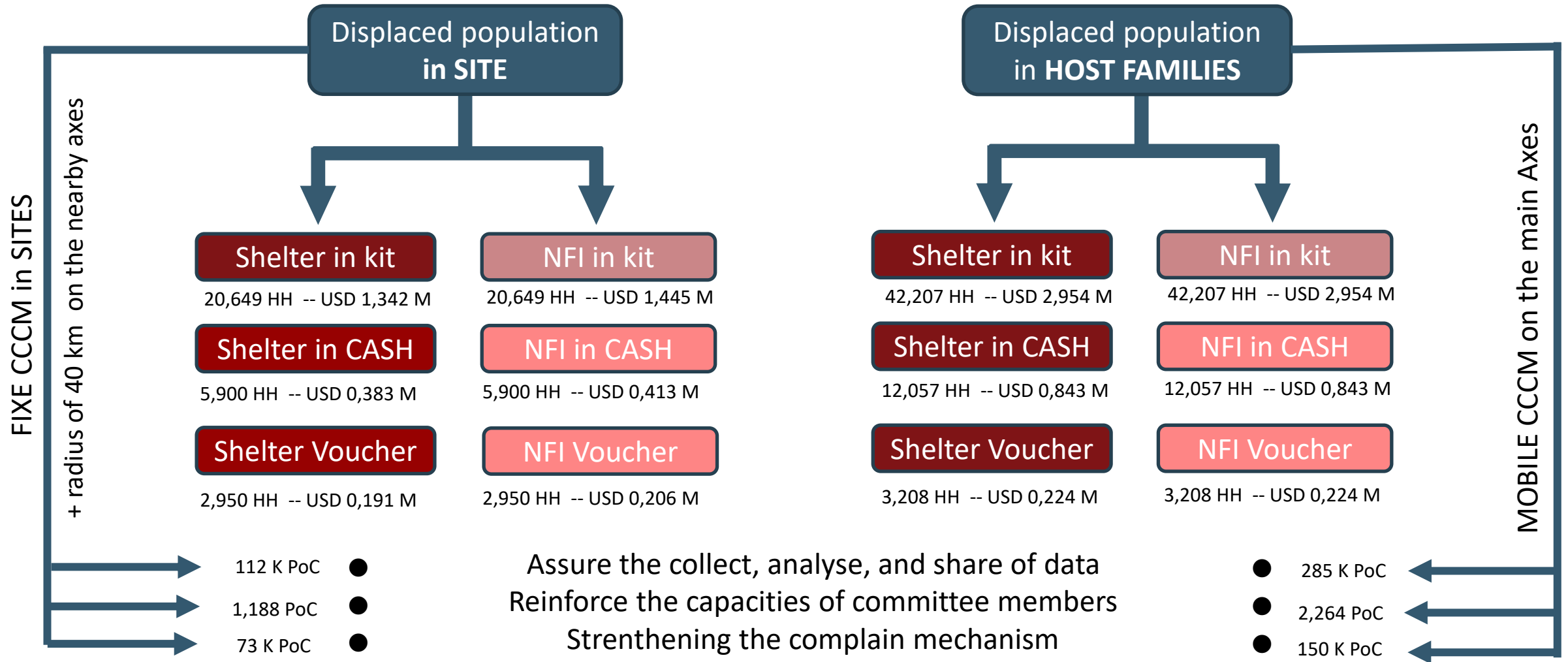
- ❑ **Increase CCCM assistance on sites** and especially on axes of circulation (host families) thanks to CCCM Mobile
- ❑ **Improve coordination and systematic and regular data collection** in collaboration with other clusters to analyse multisectoral gaps and needs
- ❑ **Develop the CCCM training plan** for actors in the targeted prefectures and strengthen **mechanisms for increased accountability through functional sectoral committees** and Information and Feedback Centers (ITCs) to facilitate communication and feedback from assisted communities.
- ❑ Strengthening emergency **response mechanisms with essential household items (NFIs) and emergency and transitional shelters** through assistance to affected populations in sites and in host families by diversifying strategies.



**Shelter Cluster**

- ❖ Promote synergies with clusters and the GTSD for more effective integrated responses.
- ❖ Integration of Kits – CASH – Coupons strategies in the provision of services, including NFI and Shelters

# 2021 Sectorial Strategy



# Humanitarian Response

Sectorial Objectives	Prioritized Actions	Budget required	Beneficiaries targeted
<p>Ensure that the <b>affected and vulnerable population</b> at the sites and gathering places have <b>access to basic standard non-food items and have a dignified transitional shelter</b> protecting them from the weather, ensuring self-sufficiency and adaptation to living conditions</p>	<p>Distribution in NFI sites and gathering places and shelters in kits, cash and coupons</p>	<p><b>USD 4,572 M</b></p>	<p><b>29,445 Households</b></p>
<p>Ensure that the affected and <b>vulnerable population in host families</b> has access to standard non-food items and has a dignified transitional shelter protecting them from the weather and adaptation to living conditions</p>	<p>Distribution dans les axes de NFI et abris en kits, cash et coupons</p>	<p><b>USD 8,908 M</b></p>	<p><b>57,472 Households</b></p>
<p>Ensure that the affected and vulnerable population at sites, gathering places and host families receive <b>CCCM assistance</b>, management and coordination training and have access to a complaint mechanism</p>	<p>Training Sensitization Prevention, support and support of fire and flood fighting activities Establishment of complaint and feedback mechanisms Covid19 follow-up</p>	<p><b>USD 7,179 M</b></p>	<p><b>86,916 Households</b></p>





## CHIFFRES CLES

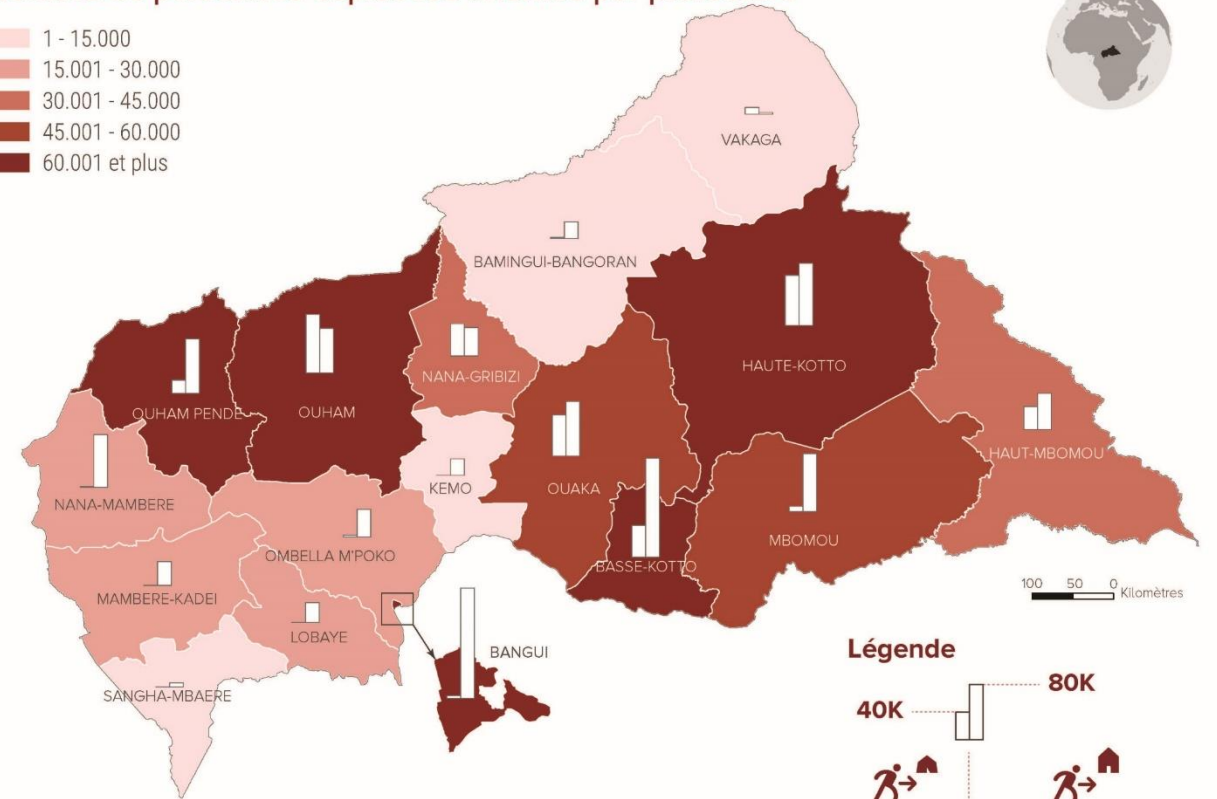


Préfectures	Sites	Famille d'accueil	Total
Basse-Kotto	23.261	73.942	97.203
Haute-Kotto	38.644	45.879	84.523
Bangui	2.093	75.375	77.468
Ouham	43.549	31.808	75.357
Ouham Pendé	10.049	57.786	67.835
Ouaka	25.418	29.741	55.159
Mbomou	4.667	42.754	47.421
Nana-Gribizi	23.124	20.810	43.934
Haut-Mbomou	15.989	25.612	41.601
Nana-Mambéré	75	27.028	27.103
Mambéré-Kadéï	153	23.700	23.853
Ombella M'Poko	1.355	21.366	22.721
Lobaye	-	15.553	15.553
Kémo	165	12.672	12.837
Bamingui-Bangoran	901	9.859	10.760
Vakaga	5.268	1.492	6.760
Sangha-Mbaéré	-	2.857	2.857
<b>Total</b>	<b>194.711</b>	<b>518.234</b>	<b>712.945</b>

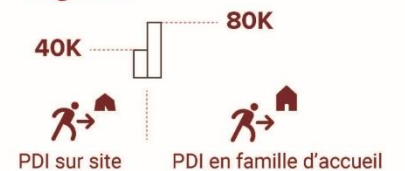
## EVOLUTION MENSUELLE (en milliers)



## Nombre de personnes déplacées internes par préfecture



## Légende



## Nombre de sites par sous-préfectures sur lesquels se trouvent des PDI

Ouham 35 (Batangafo: 16, Bouca: 10, Kabo: 8, Bossangoa: 1), Haut-Mbomou 10 (Obo: 6, Djéma: 2, Zémio: 2), Ouaka 10 (Bambari: 7, Kouango: 1, Ippy: 1, Bakala: 1), Basse-Kotto (Alinda: 4), Mbomou 5 (Rafai: 4, Bakouma: 1), Bangui: 8, Ombella M'Poko (Bimbo: 6), Vakaga (Bira: 4), Haute-Kotto (Bria: 5), Bamingui-Bangoran (Ndélé: 3), Nana-Gribizi (Kaga-Bandoro: 4), Mamabéré-Kadéï (Carnot: 1), Nana-Mambéré (Baboua: 1), Ouham-Pendé (Ngaoundaye: 1) et Kémo (Sibut: 1).

The boundaries and names shown and the designations used on this map do not imply official endorsement or acceptance by the United Nations

Date de création: 08 septembre 2021

Sources: CMP

Feedback: ajaruvwa@unhcr.org

Plus d'information: <http://data2.unhcr.org>

# IDP situation Mid-Year 2021

# General Context

## NFI & Shelter kits' composition



Recommended NFI kit composition Update 27.03.2021		Individual needs	Need per Household (*5 pers.)
Shelter Kit	Plastic sheeting 4x5m	0.4	2
	Rope 8mm diameter , 80 m	0.2	1
NFI Kit	Mosquito net	0.4	2
	Sleeping Mats	0.4	2
	Fleece Blankets - Medium thermal	0.4	2
	Semi-Collapsible Jerry Can (10 L)	0.2	1
	Heavy Duty Plastic Bucket - (14 L)	0.2	1
	Family Solar Lamp	-	1
	UNHCR Kitchen set – Type B	-	1
Hygienic Kit	Soap 200 g	2	10
Dignity Kit	Reusable sanitary towels	0.5	2.5
	Solar torch	-	1
	Pagne 6 yards in Cotton	0.2	1
	Mosquito net	0.4	2
	Slip (3 pairs size 38-40-42) dark col.	1.6	8
	Whistles	0.4	2
	Bucket 10 L with lid + Logo	-	1
COVID-19 Kit	Bucket 20 L with lid + Logo	-	1
	Soap 200 g	1	5



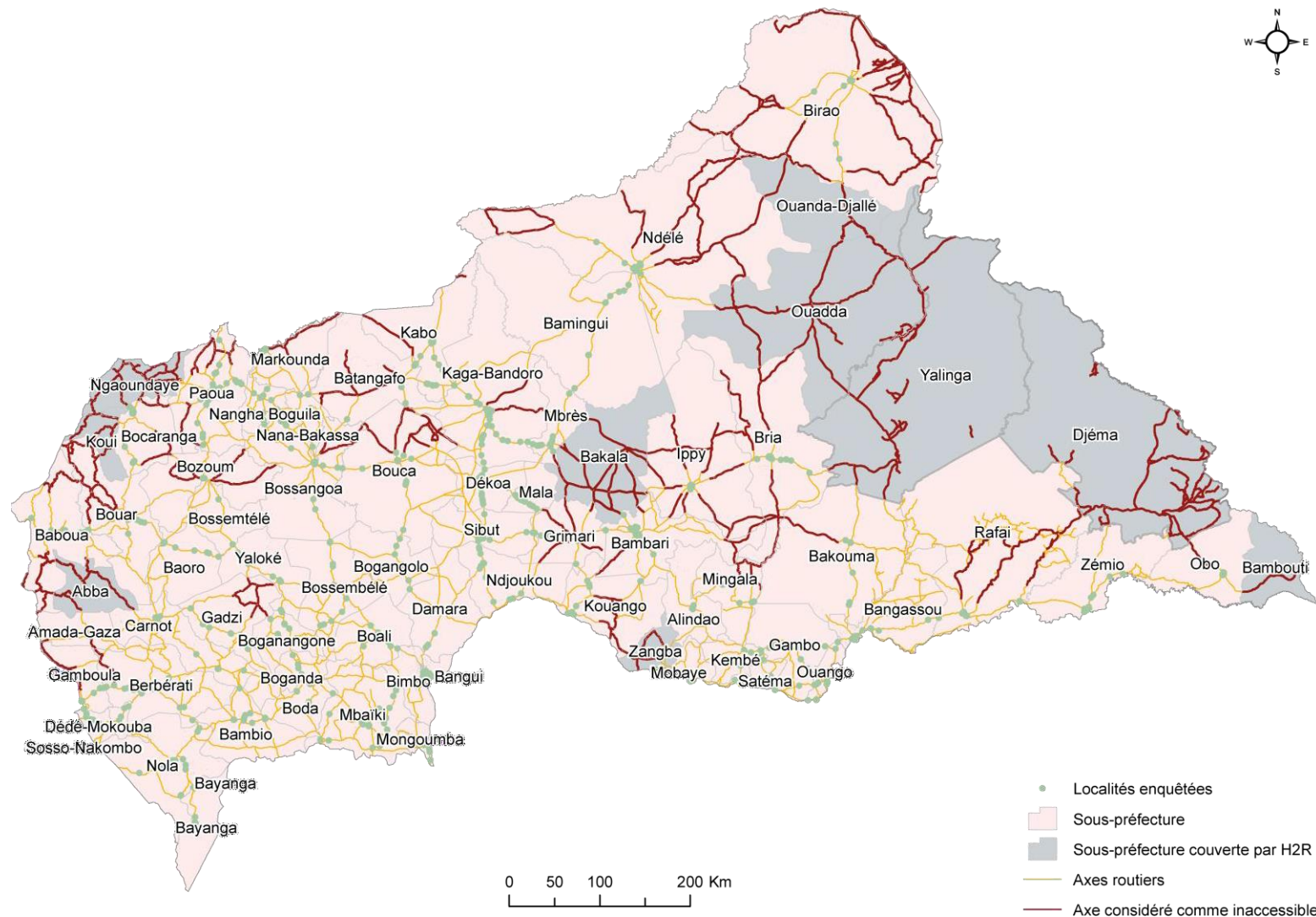
16 prefectures + Bangui

700+ localities in  
72 sous-prefectures

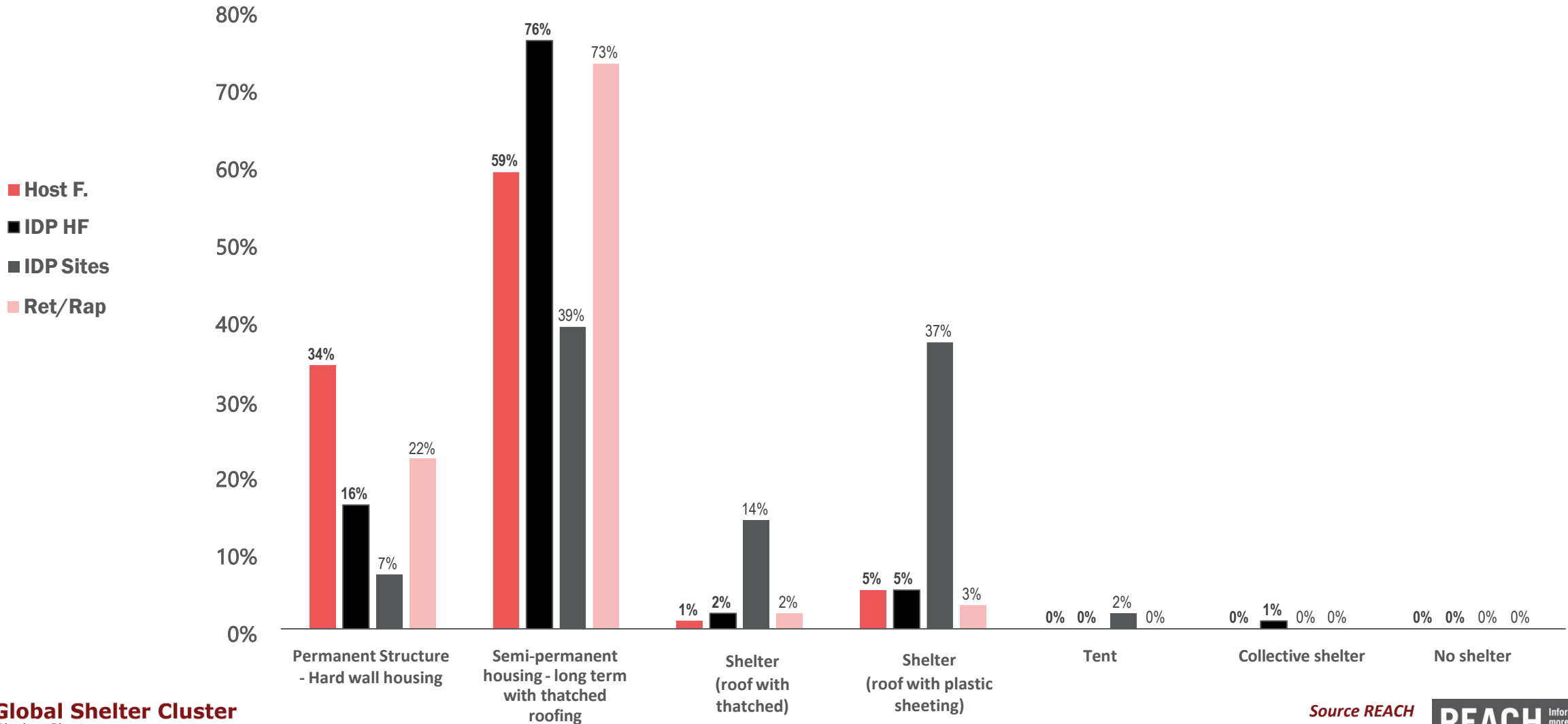
13 325 households  
assessment

600+ interviews

200+ persons mobilised  
during 10 weeks

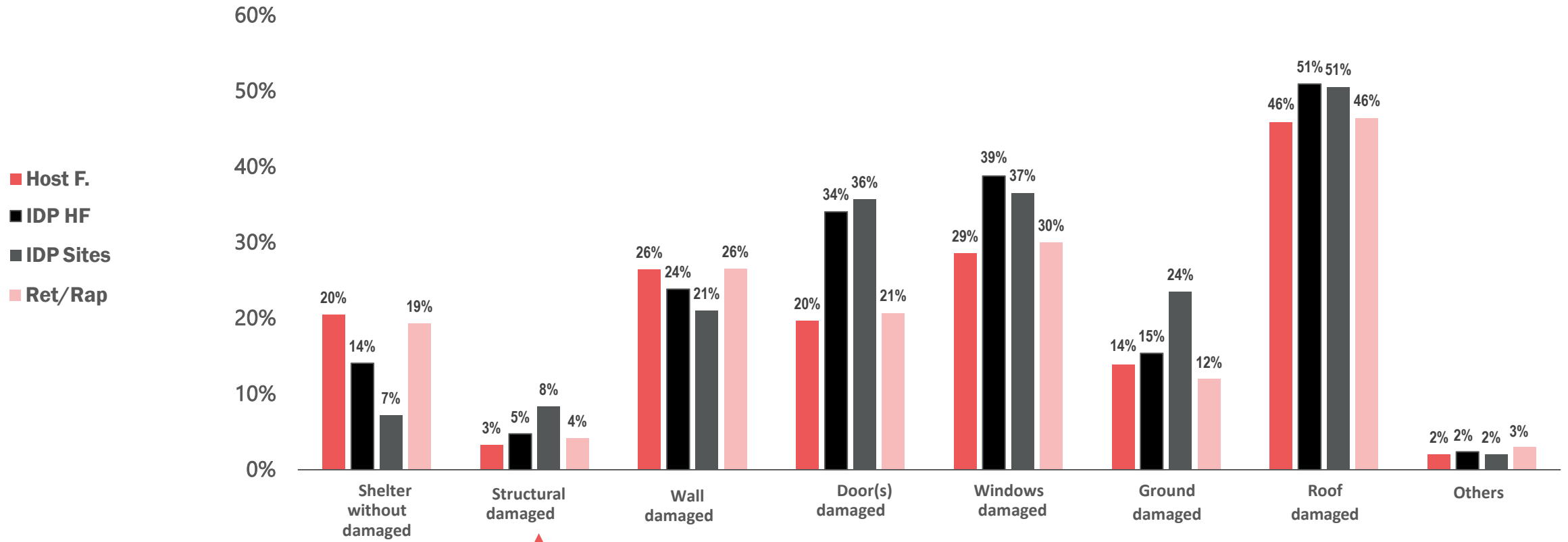


# % of Households per type of shelter, per group of population at national level



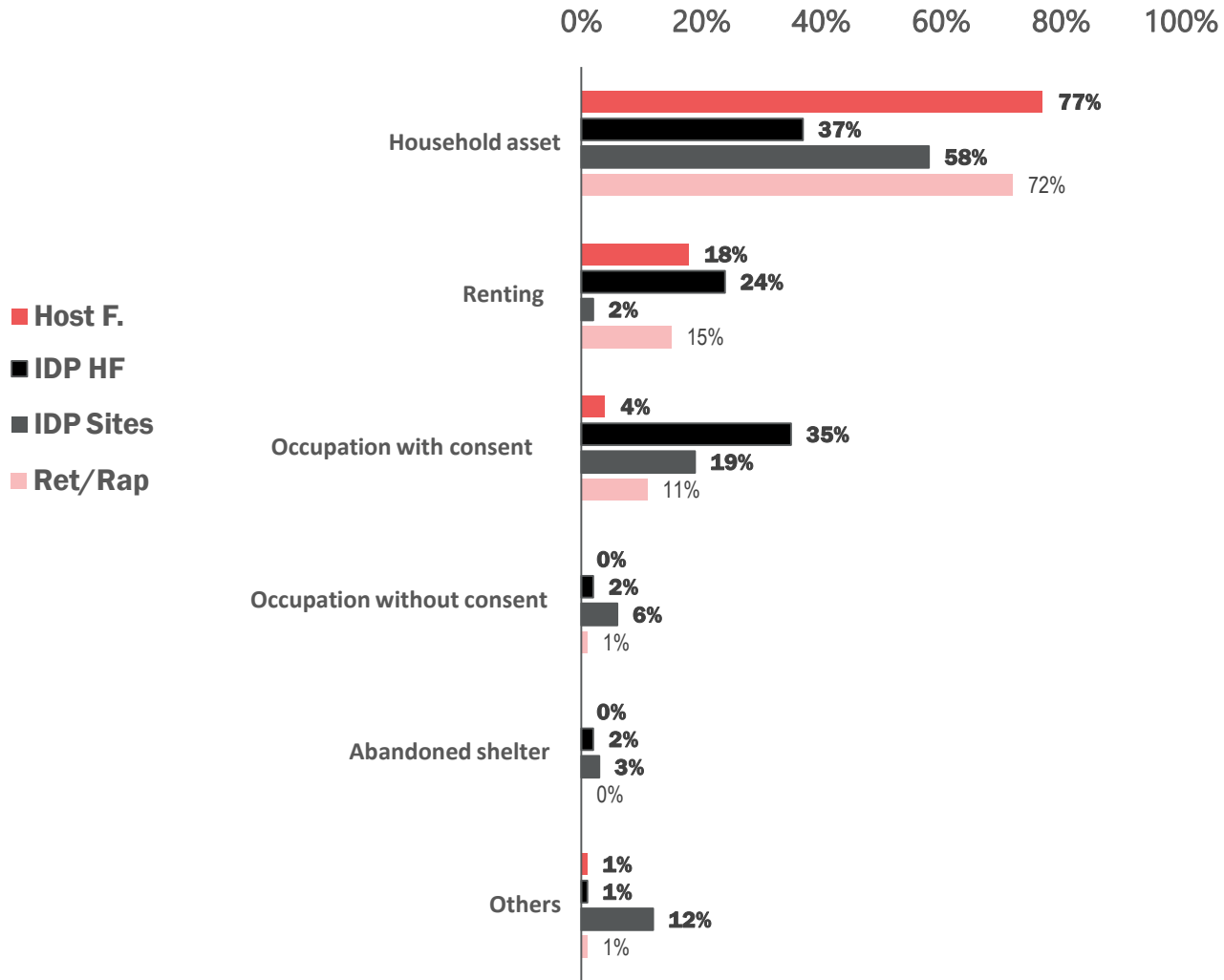


# % of households per type of damaged, per group of population

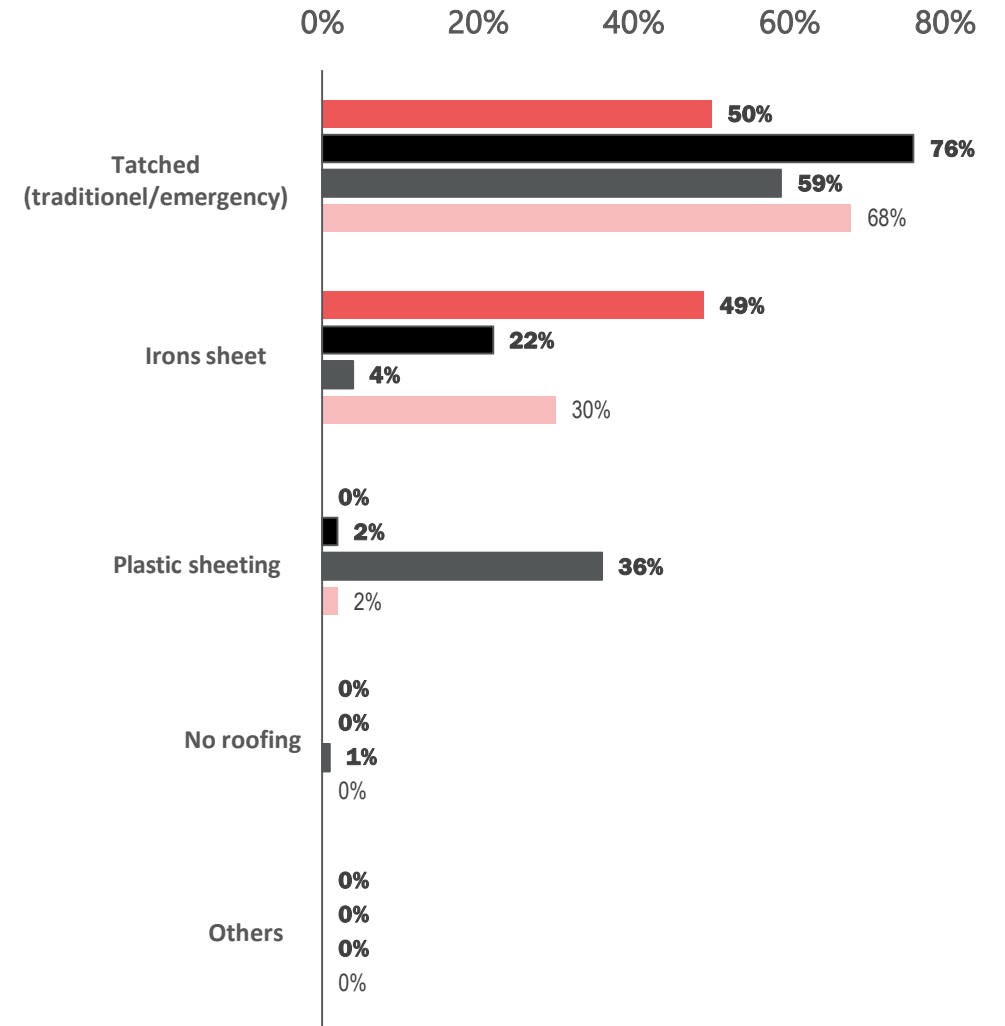


↑  
**16%** Kouango  
**11%** Bria  
**8%** Bambari

# % of households per type of housing, per groups



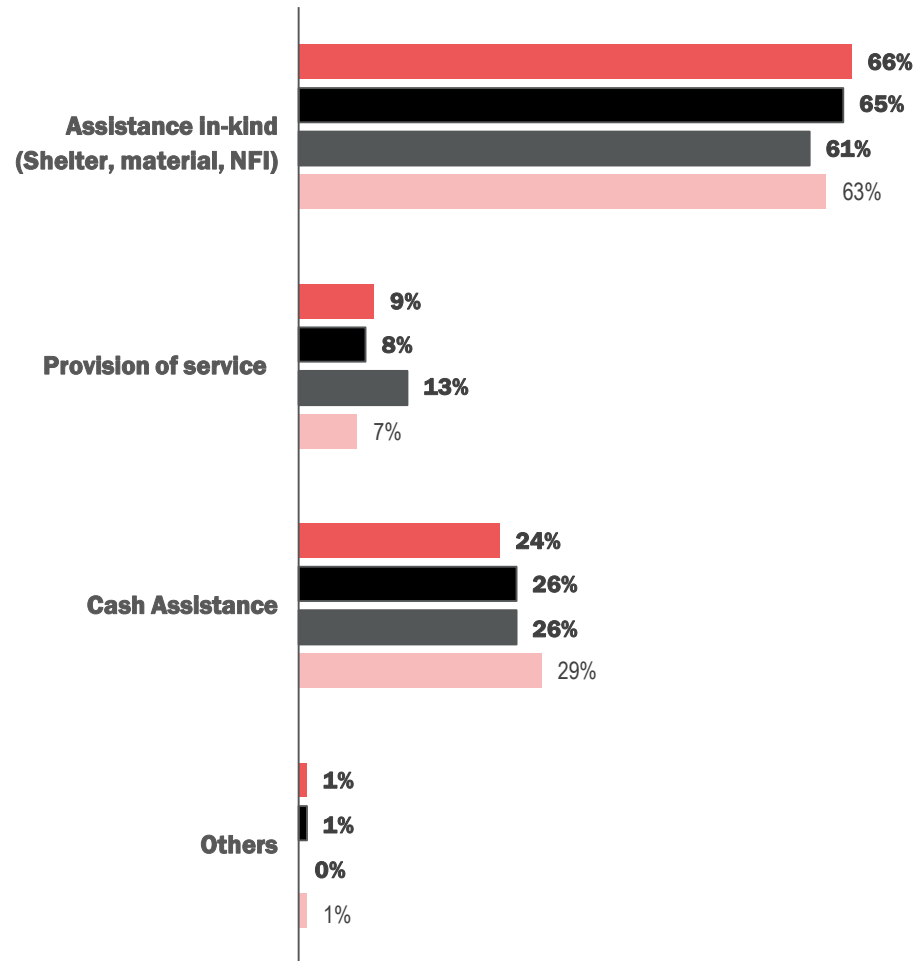
# % of households per type of roofing, per groups



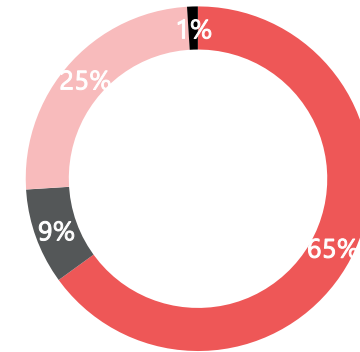
# % of households per type of humanitarian response for NFI

PER GROUP OF POPULATION

0% 10% 20% 30% 40% 50% 60% 70%



NATIONAL

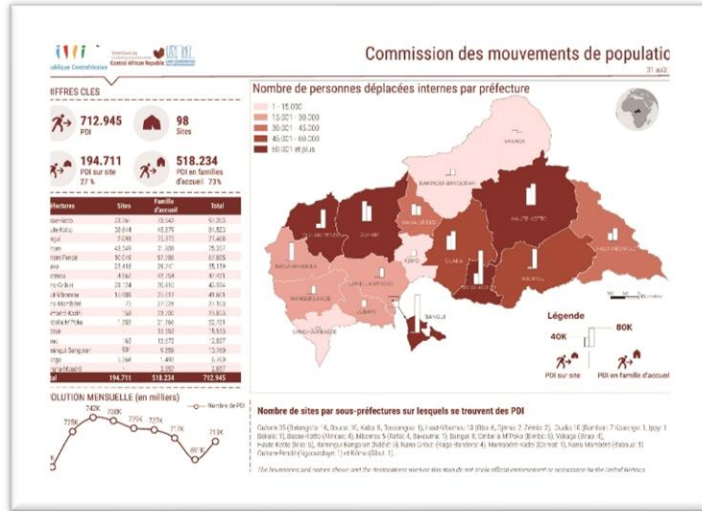


- Assistance in-kind (Shelter, material, NFI)
- Provision of service
- Cash Assistance
- Others

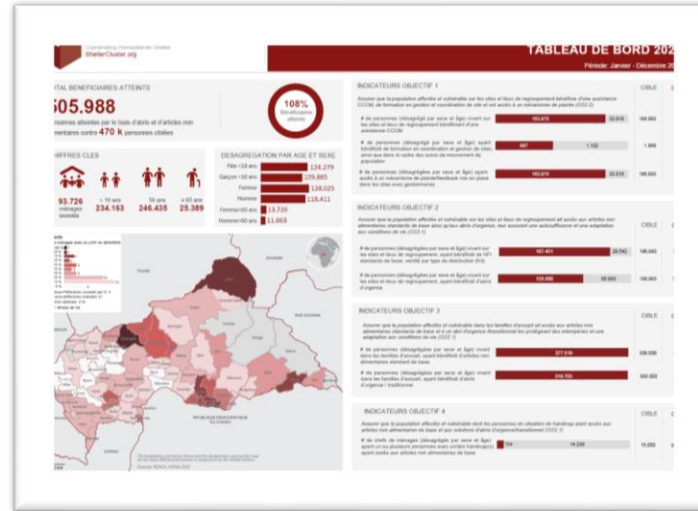
## TOP 3 SOUS-PREFECTURES

IN-KIND	//	CASH
97% Obo		48% Ndélé
89% Bouca		44% Mobaye
88% Berbérati		43% Bouar

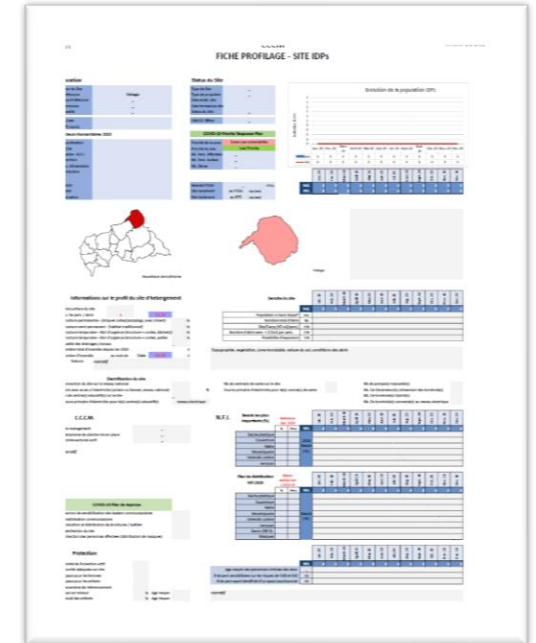
# Key coordination tools



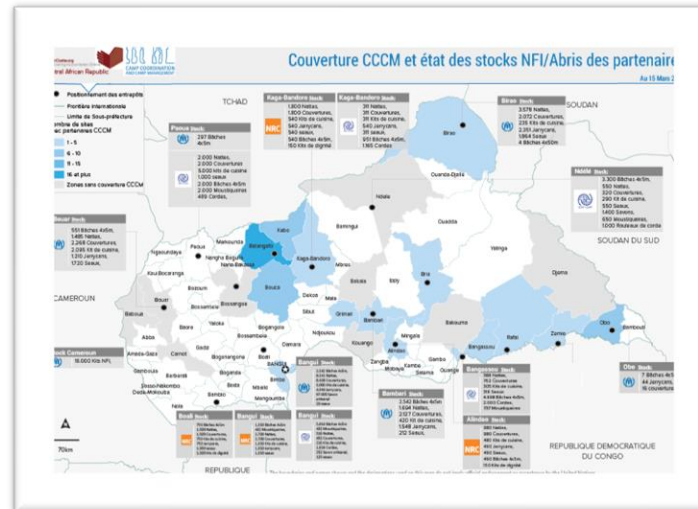
Monthly data for the movement of population IPD in Sites & in Host communities



Quarterly & Yearly dashboards



Quarterly profile site data



Quarterly NFI stock at national level

# Challenges

CLUSTER	CHALLENGE
<b>NFI / SHELTER</b>	<ul style="list-style-type: none"><li><input type="checkbox"/> Funding gap</li><li><input type="checkbox"/> Insufficient of essential stocks in the country</li><li><input type="checkbox"/> Challenge to track the availability of NFI (Nb-location)</li><li><input type="checkbox"/> Logistical and security challenges</li><li><input type="checkbox"/> Lack of access</li><li><input type="checkbox"/> Restriction by Armed Force to operate onsite (i.e. mapping by drone)</li><li><input type="checkbox"/> Problem of harmonizing the composition of NFI kits and emergency shelters of cluster partners</li><li><input type="checkbox"/> Issue about the quality of the NFI items</li></ul>