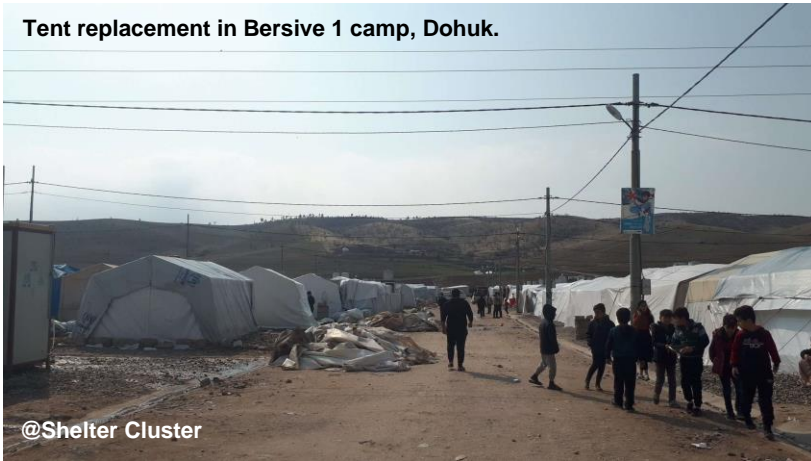
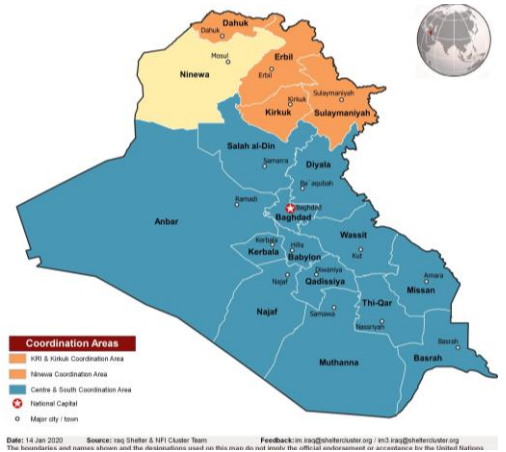


Tent replacement in Bersive 1 camp, Dohuk.



@Shelter Cluster



**NEEDS ANALYSIS**

As per the IOM-led DTM report, **1.41 million IDPs** and **4.6 million Returnees** have been identified across the country, from Jan 2014 to Feb 2020

The number of IDPs continues to decrease (from 2.6 million as of Dec 2017 to 1.41 million as of Feb 2020); while the numbers of returnees has increased (from 3.2 million, end of Dec.2017 to 4.6 million, end of Feb.2020).

- 24% of those IDPs are in camps, while 68% are currently in private settings (in rented accommodation or with host families); 8% remain in critical shelter arrangements (unfinished/abandoned building; school/religious buildings and informal settlements).
- 95% of the returnees are in their habitual residence, 2% in Private Settings while 3% live in critical shelter arrangement such as informal settlements, unfinished and abandoned buildings, schools, religious structures.

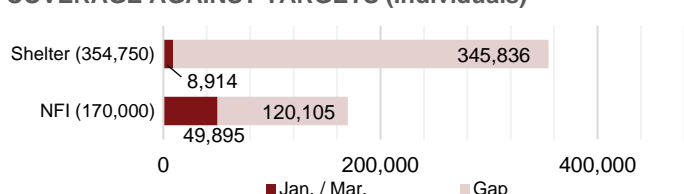
**CURRENT CLUSTER INTERVENTIONS (1<sup>st</sup> Jan. – 31<sup>st</sup> Mar. 2020)**

- Out of the overall SNFI Cluster target of 524,750 individuals, **49,895 (29%)** have been assisted with **NFI kits**; **8,664 (2%)** have benefited from **shelter interventions**:
  - 36,156** people living in camps and informal settlements have been reached with NFI kits; **3,243 people** have been provided with emergency shelter interventions.
  - 3,878** returnees have been reached with NFI kits; **2,314 people** were assisted with either emergency repairs of War Damaged Shelter (WDS) or provided with Sealing-off Kits.
  - Under HRP 2019, **352,486 individuals** have been assisted with **winter support** during the 2019 – 2020 season. **95%** of the assistance was done through the distribution of **winter cash** to cover people’s needs in the most effective and efficient way.

**GAPS / Constraints and Key Critical Issues**

- The introduction of restrictive measures against public gatherings and the spread of the **COVID-19** pandemic, many partners are facing difficulties in moving staff and materials across governorate checkpoints and general bans on movement. The situation impacts severely operational capacity and has caused **significant delays on all ongoing and planned projects**.
- Shelter Cluster** is working closely with Health Cluster and other humanitarian partners on contingency planning for possible COVID-19 cases in camps.
- Capacity building:** in Feb-March 2020, Shelter Cluster Iraq conducted four ActivityInfo trainings in Erbil, Baghdad and Dohuk reaching 74 partner staff members and continues to instruct bilaterally more partners on their reporting responsibilities and the new version of the platform.

**COVERAGE AGAINST TARGETS (Individuals)**



**CLUSTER TEAM** (please see details on the [country page](#))

**National Coordinator**

Francesca Coloni | [coord.iraq@sheltercluster.org](mailto:coord.iraq@sheltercluster.org)  
Vacant (co-chair)

**Information Management Unit**

Mohammed Faisal | [im.iraq@sheltercluster.org](mailto:im.iraq@sheltercluster.org)  
Emmanuel Otika | [im3.iraq@sheltercluster.org](mailto:im3.iraq@sheltercluster.org)

**Sub-National Coordinators**

Petya Boevska | [coord3.iraq@sheltercluster.org](mailto:coord3.iraq@sheltercluster.org)  
Michel Tia | [coord4.iraq@sheltercluster.org](mailto:coord4.iraq@sheltercluster.org)  
Avedis Baberian | [coordroving.iraq@sheltercluster.org](mailto:coordroving.iraq@sheltercluster.org)

**Technical and Liaison Officer**

Aziz Abultimman | [snrnatassot.iraq@sheltercluster.org](mailto:snrnatassot.iraq@sheltercluster.org)

**KEY DATES**

The outbreak of violence between Iraqi security forces and armed groups in January 2014 triggered ten significant waves of displacement: pre-June 2014, June-July 2014, August 2014, post September 2014, post April 2015, post March 2016, post 17 Oct. 2016, July 2017, January 2019 and January 2020.

**Cluster activation date: January 2014**

**KEY DOCUMENTS**

- [Technical Support and Design Guidance – NFI](#)
- [Technical Support and Design Guidance – Shelter](#)
- [Information Management Products & Related Datasets](#)
- [Assessments Datasets and Reports](#)
- [Meetings Minutes and Related Presentations](#)

**KEY LINKS**

- [Iraq SNFI Cluster Page on the Global Cluster Website](#)
- [War damage shelter repairs Dashboard](#)
- [2019 Inter-cluster dashboard on HRP Monitoring](#)
- [Country page on Relief Web](#)

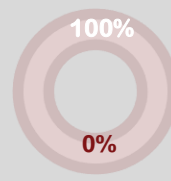
**KEY FIGURES**

**14** Partners  
Operational Presence

**2.4 M / 0.52 M**  
People in need / targeted

**FUNDING PROGRESS – 2020 HRP**

Shelter Cluster has not received any sector-specific funding through the HRP funding mechanism for Jan-Mar 2020.



■ Funded ■ Gap

HRP Total funding required:

**\$43.2 M**

HRP Total funded:

**\$0 M**

**Strategic Objectives One:** Safeguard physical and mental well-being of 1.65 million conflict-affected people with acute needs by providing services to meet basic needs.

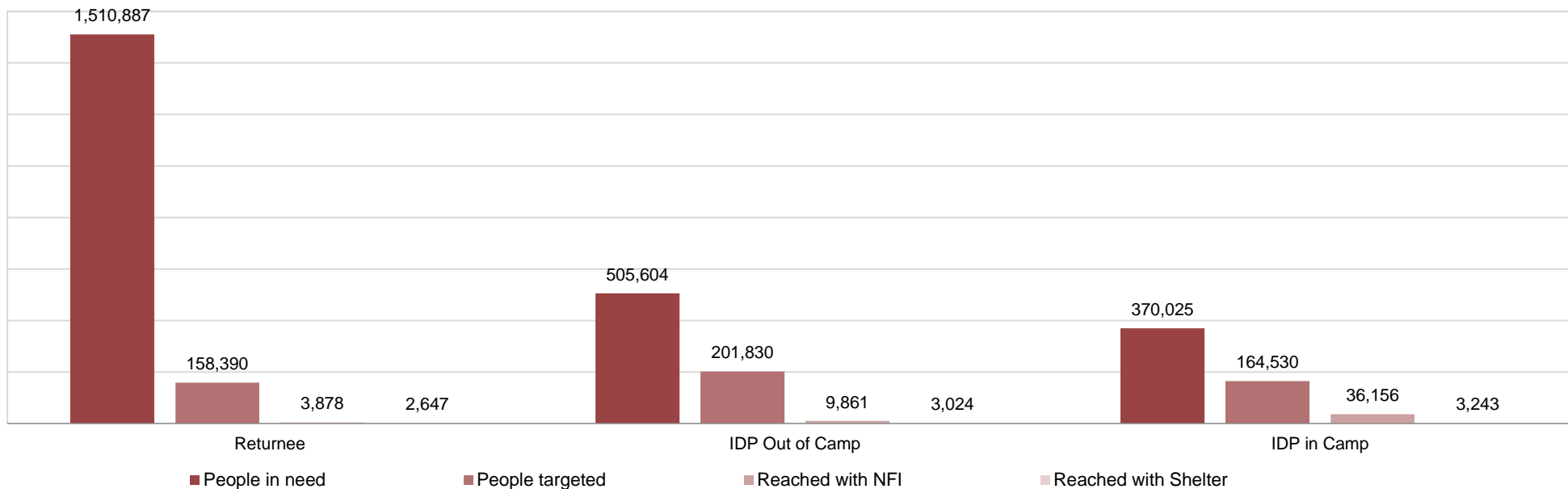
Beneficiary type	Activity	Target (Indv.)	Achievements (Indv.)	%
IDPs in camp	Non-Food Item (NFI) Kit Distribution	45,000	36,156	80%
	Shelter Upgrades in Camps	119,530	3,243	3%
IDPs out of camp	Non-Food Item (NFI) Kit Distribution	92,000	9,861	11%
	Critical Shelter Upgrades Sealing-Off Kit (SOK) Distribution Rental Subsidies	109,830	3,024	3%
Returnees	Critical Shelter Upgrades Sealing-Off Kit (SOK) Distribution	104,390		0%
	Non-Food Item (NFI) Kit Distribution	33,000	3,878	12%


**Strategic Objectives Two:** Address critical problems related to living standards by expanding access to basic services for 1.54 million conflict-affected people with acute needs.

Beneficiary type	Activity	Target (Indv.)	Achievements (Indv.)	%
Returnees	Low-Cost Transitional Shelter (Including RHUs, traditionally constructed, etc.)	6,000	83	1%
	War-Damaged Shelter Repairs (Category 2 & 3)	15,000	2,314	15%

### Cluster overall achievements

People in need, targeted and reached per beneficiary groups



Cluster	Coordinator Co-Facilitator	Government Counterpart	Organizations	Location(s) of interventions
	<p>UNHCR IOM, ACTED</p>	<p>Ministry of Migration and Displacement (MoMD); BRHA and JCC in KRI</p>	<p>15 Partners have reported in Activity info. This includes 14 partners reporting on HRP achievements. 4 partners have also reported Non-HRP achievements</p>	<p>4 partners operating in KR-I, 12 partners operating in Centre &amp; South</p>

Iraq Shelter and NFI Cluster Online Dashboard can be found here (Jan-Feb 2020): <https://www.sheltercluster.org/iraq/iraq-shelter-and-nfi-cluster-online-dashboard>