

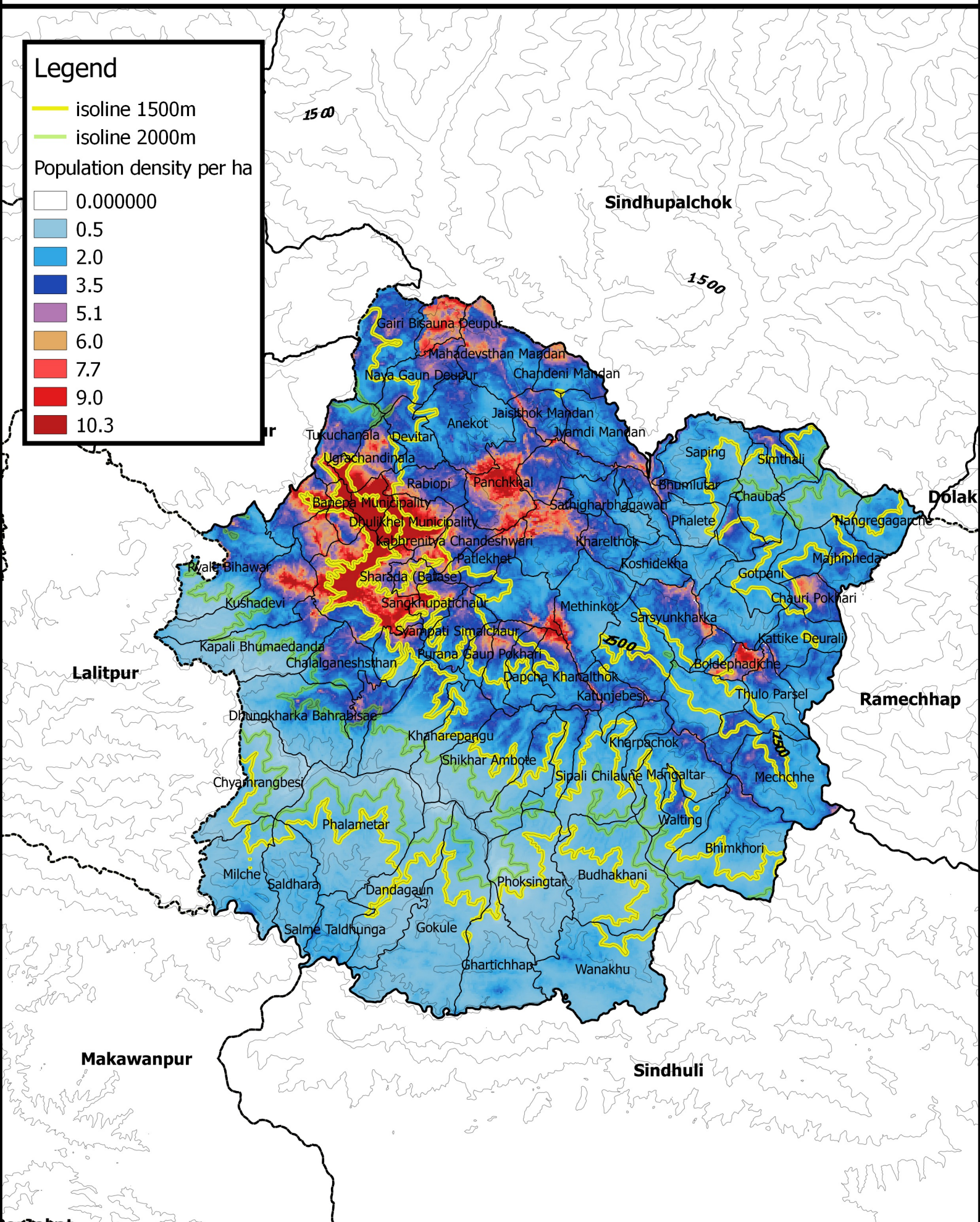
Maps for Winterization Planning: Elevation and Population Density - Khabhrepalanchok

Legend

- isoline 1500m
- isoline 2000m

Population density per ha

	0.000000
	0.5
	2.0
	3.5
	5.1
	6.0
	7.7
	9.0
	10.3



This map has been produced by the Shelter Cluster Information Management Team to help agencies better plan for winter distributions. It is to be used together with the Winterization technical annexes that can be found at www.sheltercluster.org. The population density data is based on 2011 census. Agencies will still need to conduct their own assessment and consult the local authorities for latest population data.