

WEST JAVA EARTHQUAKE: % of Homes that are Severely Damaged and IDPs

West Java - as of 14 Sep, 2009



Legend

% of Homes damaged

- Less than 1%
- 1% - 2%
- 2% - 5%
- 5% - 10%
- More than 10%

1 Dot = 200

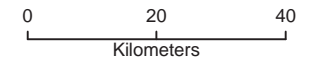
IDPs

District Boundaries

Province Boundaries

Map Doc Name: WestJava_Shelter_IDP.v2
 GLIDE Number: TS-2009-000173-IDN
 Creation Date: 17 Sep 2009
 Projection/Datum: WGS84 Lat/Lon
 Web: <http://ochaonline.un.org/indonesia>
 Nominal Scale at A4 paper size:

1:990,000

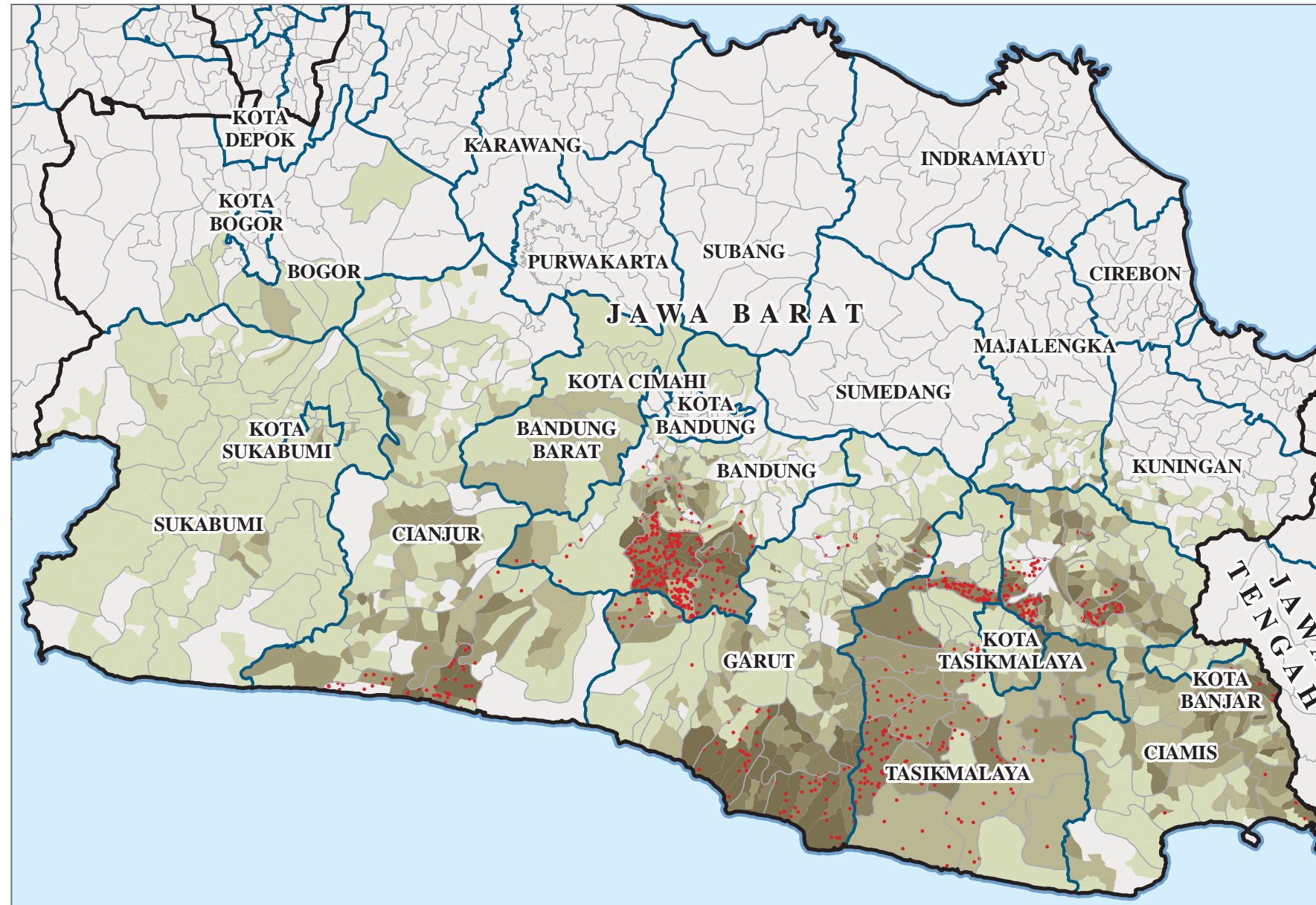
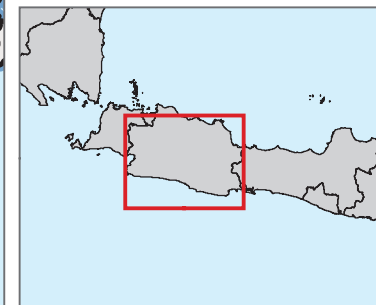


Map data source(s):

Administrative Boundaries and Census data from the Indonesian Government (BPS). Information on damaged homes provided by SATLAK - West Java. As of 14 Sep 09.

Disclaimers:

The designations employed and the presentation of material on this map do not imply the expression of any opinion whatsoever on the part of the Secretariat of the United Nations concerning the legal status of any country, territory, city or area or of its authorities, or concerning the delimitation of its frontiers or boundaries.



Data on damaged houses is provided by district governments. This data is at the Village level except for Tasikmalaya, Bandung Barat and Bogor district for which data is available only at the subdistrict level. Population statistics are from the 2008 Census. Percentage of damaged homes is calculated using the total number of Households in the census data and the number of severely damaged homes. Please note that data on housing damage is ONLY available for West Java.