



FICSS Conference Virtual Room

Host: FICSS UNHCR
Meeting number: 705 540 675

Lock Room Record End Meeting



Call Using Computer

[More Options](#)

Share Screen

[More Options](#)

Invite & Remind

[Copy Meeting URL](#)

Participants

Speaker:



FICSS UNHCR (Host, me)



Use these controls to start, pause, resume, or stop recording. ✕

Recorder

Select button to record on server

Connected ●

Please make sure to press the button Call Using Computer to start the WebEx teleconference. Otherwise we will not be able to hear you.



Global Shelter Cluster
ShelterCluster.org
Coordinating Humanitarian Shelter

GSC Mid-Year Teleconference



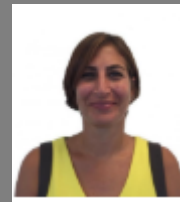
7 June 2018



WELCOME



Brett Moore,
GSC Coordinator,
UNHCR



Ela Serdaroglu,
GSC Coordinator,
IFRC



Some ground rules

Please:

- Mute yourself when not speaking
- Raise your virtual hand if you would like to speak
- Use the chat function for questions when possible
- Introduce yourself & agency when talking

Overview of the agenda

14.00 – 14.10 Welcome – Introductions - Revision of the agenda

14.10 – 14.40 Updates on key issues from the field

14.40 – 14.50 Updates on the GSC activities and services offered

14: 50 – 15:00 GSC Strategy 2018-2022

15: 00 – 15:15 Answers to questions

15: 15 – 15:30 AOB

Updates from the field

Coordination of urban shelter response

- Syria Shelter Cluster
- Ukraine Shelter Cluster

Supporting localization of shelter responses

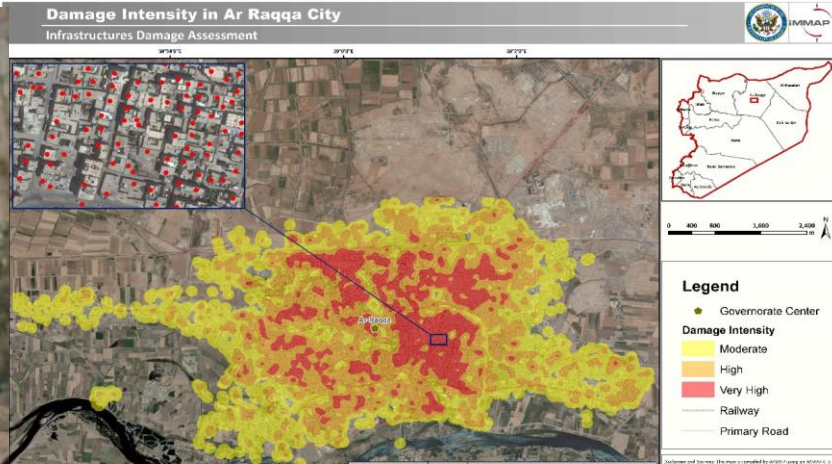
- Vanuatu Shelter Cluster
- Turkey cross-border Shelter Cluster

Coordination of Urban Shelter Response

Shelter Sector, Syria Hub
7 June 2018

Context

- 54% Urban population (2004 Census).
- 15 to 18% Syrians lived in informal settlements with 30 to 40% in big cities such as Damascus, Aleppo and Homs (General Establishment of Housing Study, 2007).
- HLP issues are more complex in urban areas. Multi-storeyed buildings with multiple owners/informal settlements.
- High level of destruction is higher in urban areas (especially in big cities like Aleppo, Homs, Raqqa and Deir Ez Zor).
- High level of explosive contamination in some areas such as Raqqa.
- 25 sector partners, 6 Sub-national working groups, reached 511,973 individuals in 2017.

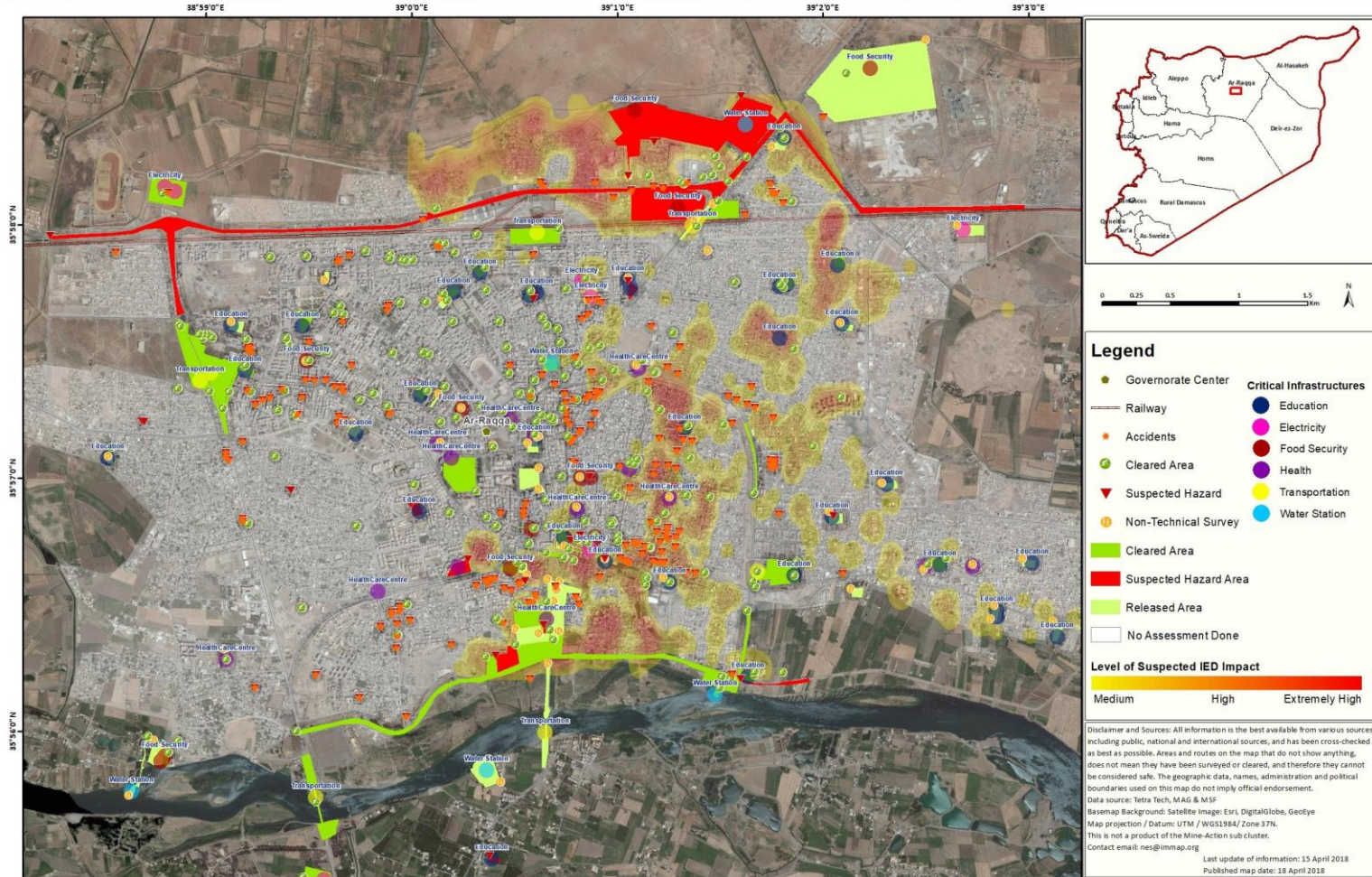


LEVEL OF DAMAGES



WRA funded Mine Action Activities in NE Syria – Raqqa City

Cleared, Released and Reported Hazardous Area



Good Practices

Good practices:

- Harmonisation of approaches across governorates.
 - Approval process documents
 - Guidelines and strategy
- Active involvement of sub-national working group focal points.
- Planned assessment together with SARC.
- Close coordination with MoLAE (Sector co-lead).
- Joint planning in Aleppo with ERL and WASH sectors.
- Flexibility in response.

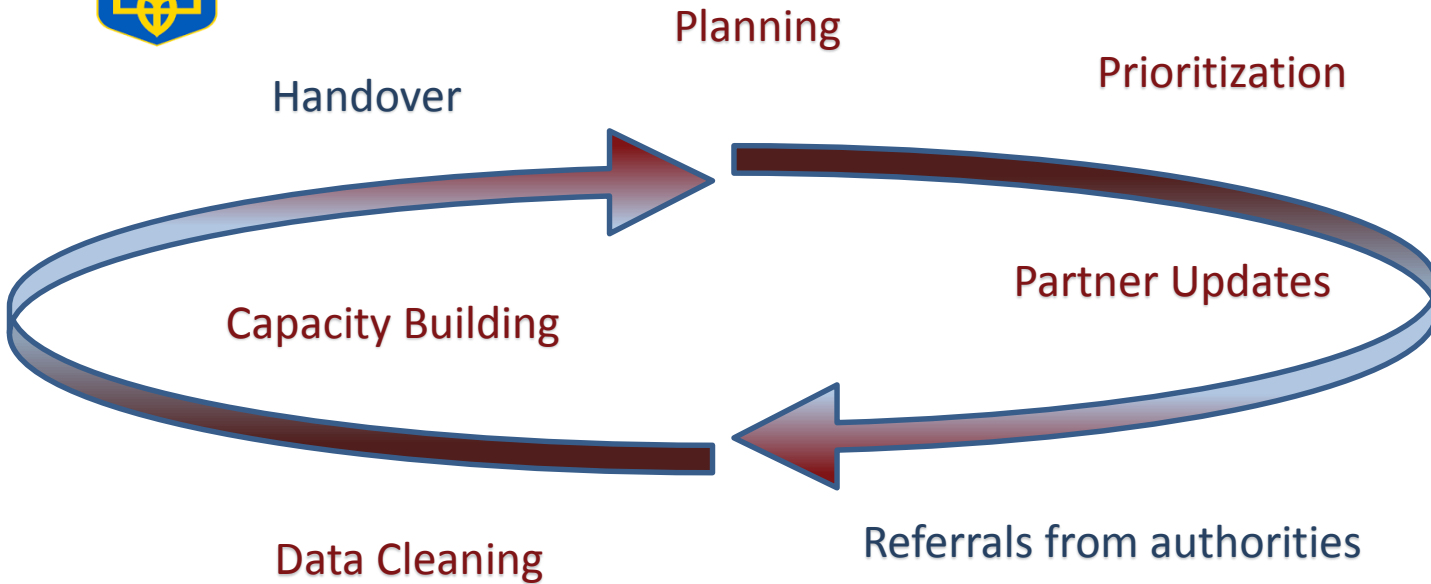
Challenges

- Increasing needs, diminishing coping capacities of both the IDPs and host communities, and limited financial resources.
- Access and safety are the key challenges in some parts of the country as well as partner capacity and heavy processes.
- Shelter and infrastructure needs are huge and the Shelter Sector partners collectively do not have capacity to meet all the needs.
- Issues related to the loss of occupancy documents deprived some population from accessing shelter supports.
- Opportunities for systematic field-based data collection remain very limited due to access/authorization restrictions, resulting in incomplete needs analysis.

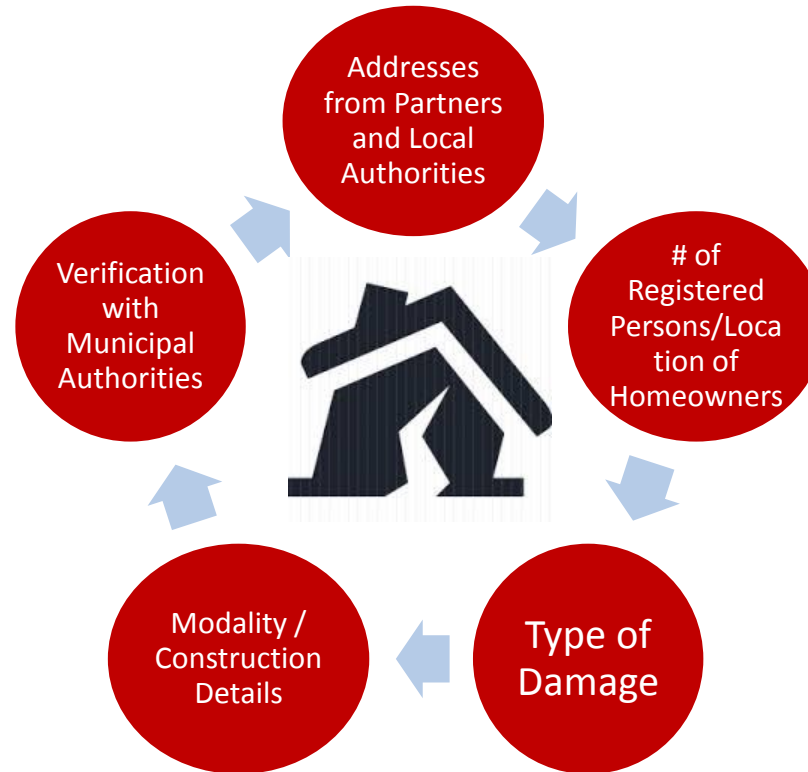
Damage database

Ukraine

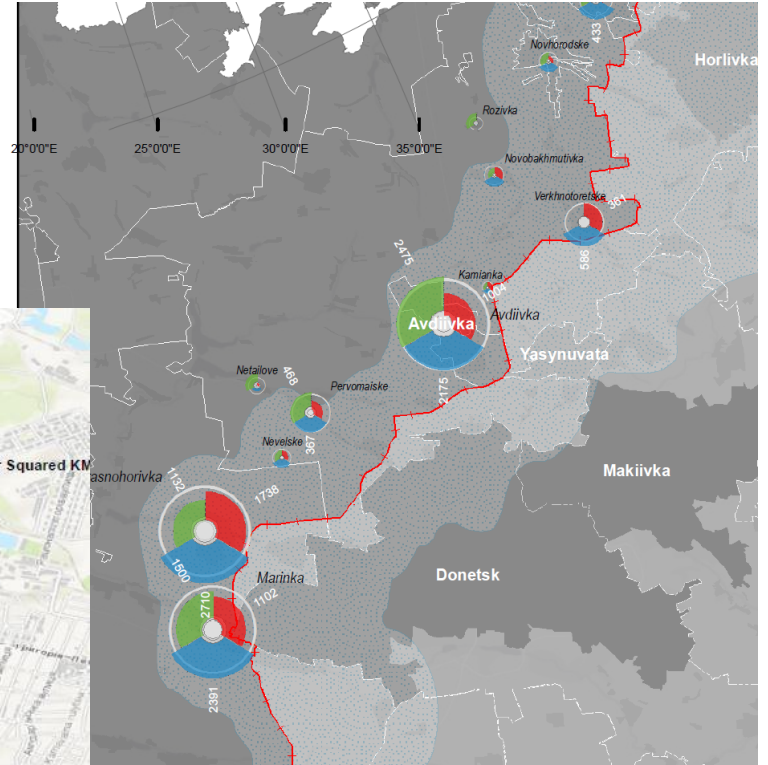
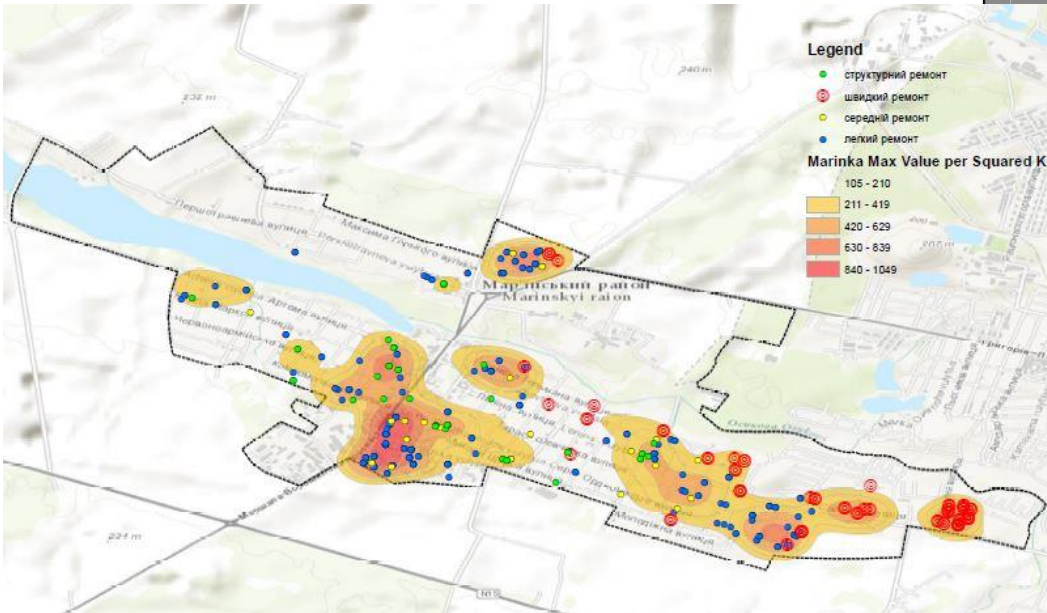
Damage Database



Process for Reporting Damages and Repairs



Way of use



Vanuatu Ambae Volcano Response

- **Context:** The active volcano on Ambae island led to declaration of a disaster zone, call of state of emergency and (re)activation of clusters for the response. Current response is supporting those internally displaced on-island, while government arranges support of relocation onto permanent sites on the neighbouring island of Maewo.



Localization

- Decentralized. Main coordination has effectively moved to provincial level, directly on Ambae. Local stakeholders and decision-makers involved.
- Clusters are directly Ministry-led, and again effectively at provincial level. IFRC in support role both nationally and provincially.
- Leaders of directly affected local communities are close to and do participate in meetings.
- Strengthening capacity of provincial cluster focal points increase capacity to respond to next Ambae volcano crisis.

Localization

- Local actors have a strong local understanding of local language, issues, politics and culture.
- Supports internal ministry coordination structure, communications, etc. and lessen administrative burdens.
- “making principled humanitarian action as local as possible and as international as necessary” – national and hub level positions in background as ministry lead in forefront. Higher ownership.

Notes from: IFRC Policy Brief: Localization - what it means and how to achieve it:

<http://media.ifrc.org/ifrc/wp-content/uploads/sites/5/2018/05/Localization-external-policy-brief-4-April-2.pdf>

Overview of the agenda

- 14.00 – 14.10 Welcome – Introductions - Revision of the agenda
- 14.10 – 14.40 Updates on key issues from the field
- 14.40 – 14.50 Updates on the GSC activities and services offered
- 14: 50 – 15:00 GSC Strategy 2018-2022
- 15: 00 – 15:15 Answers to questions
- 15: 15 – 15:30 AOB

Updates from the GSC

11 WGs active. Update from most recent:

- Urban Settlements WG
- SoHSS WG
- Shelter Vulnerability Classification WG
- Disability WG
- Cash WG & Cash Champions
- New service: HLP Support
- New service: Roving IMO

Settlement Approaches in Urban Areas WG

Focusing on Area Based Approaches in three strands

Area Based Assessments

Area Based Coordination

Area Based Programming

The GSC Urban Settlements WG was established in May 2017 to further the **piloting and application of area based approaches**, and **advocating at the global level**.

What has occurred so far: [link](#)

Definitions paper: Area/settlement based approaches

Settlement case studies compendium: 30 case studies in total and macro analysis

Championed into Sphere 2018:

Piloting Area Based Coordination: Funding received from GSC to pilot in an agreed urban crisis in 2018

Continued working group sessions: every 6 weeks, participation by 20 organisations from 5 other cluster plus OCHA.

Work of this WG highlighted at IASC WG NY

Going forward:

Deploy Area based coordinator: (contact us if interested)

Evaluate effectiveness, develop guides/ training

Host events – (6 July Geneva Settlements approach)



Global Shelter Cluster
ShelterCluster.org
Coordinating Humanitarian Shelter

Urban Settlements Working Group

The State of Humanitarian Shelter and Settlements Report 2018 Edition

Overall aim: to raise the profile and understanding of the humanitarian shelter and settlements sector and provide the evidence base to advance GSC priority advocacy issues.

Target audience: policy makers, donors, governments and senior management of humanitarian agencies and institutions.

Overall theme (2018 edition): What is humanitarian shelter and settlements and why it is important.

Report structure: A series of articles around a common thematic area of interest and statistical analysis of current humanitarian shelter needs and responses.

2018 edition structure: Context (11 chapters); Tools, Opportunities and Challenges (7 chapters); 15 Text Boxes; Statistical Analysis.

Current status: chapters and text boxes under peer review process (deadline June 11). Statistical Analysis undergoing.

Target publication date: July 31. Timeframe extension may be required.

Working group on Inclusion of Persons with Disabilities

Aim: Build on existing guidelines and inclusion work, to integrate a wider and more systematic disability inclusive approach to shelter and settlements programming.

Activities:

- Test and review the efficacy of *AUOR* and other inclusive guidance in practice.
- Identify and collect good and bad practices from cluster/ working group members.
- Act as a forum to bring other organisations, sectors and actors together.
- Revise *AUOR* and other good shelter programming guidance for use as a GSC tools.
- Disseminate GSC tools and Standards
- Develop a ToR for an inclusive shelter expert to support emergency operations

Contact:

Expressions of interest in joining the WG/ submitting case studies/ opportunities to test guidance:

- lemarshall@redcross.org.au
- mmojtahedi@icrc.org
- michael.waugh@nrc.no
- jashmore@iom.int



Shelter & Cash Working Group

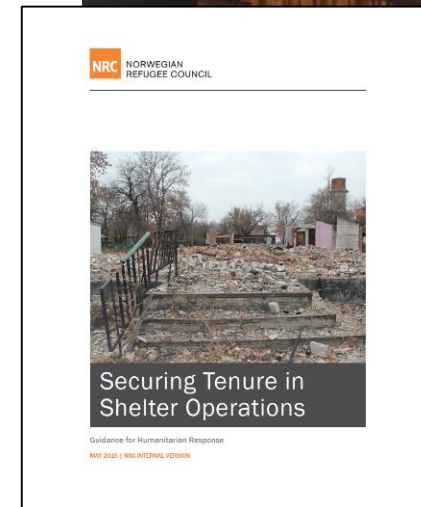
Through support of partners and the inclusion of some 'Cash Champions' activities within GSC ECHO grant;

- Markets/capacity – deployments (x3) with a potential 4 more within 2018
- Tools & guidance development (LMA and others)
- Technical contributions/evidence collection at agency and cluster levels
- Improving external understanding of sectors needs and issues around cash through advocacy and involvement in relevant discussions – Grand Bargain, CaLP initiatives, CCD, Save ERC consortium

What will *you* build?

Increasing HLP capacity in the sector through...

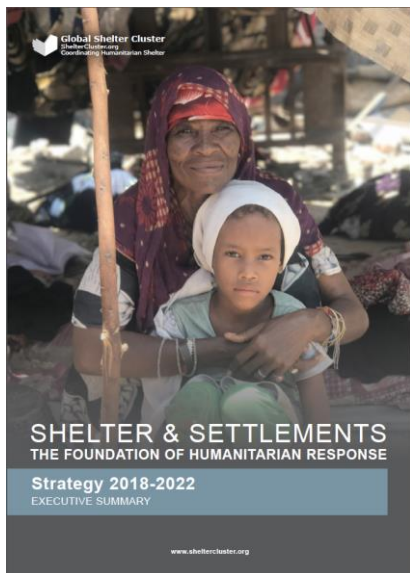
- **Dedicated capacity** –new *GSC Roving HLP Advisor*, Ibere Lopes (hosted by IOM, funded by NRC/ECHO)
- **Guidance** – Inclusion of Security of Tenure as a new minimum standard in the Sphere revision
- **Guidance** - revision of NRC *Securing Tenure in Shelter Operations* guidelines, including country profiles, and training materials
- **Training events** – with NRC and IOM
- **Collaboration** –NRC and IOM participating in the recent HLP AoR event in Bangkok. IOM and NRC to undertake HLP training for ECHO/EU in June



Overview of the agenda

- 14.00 – 14.10 Welcome – Introductions - Revision of the agenda
- 14.10 – 14.40 Updates on key issues from the field
- 14.40 – 14.50 Updates on the GSC activities and services offered
- 14: 50 – 15:00 GSC Strategy 2018-2022**
- 15: 00 – 15:15 Answers to questions
- 15: 15 – 15:30 AOB

GSC Strategy 2018-2022



 **Global Shelter Cluster**
ShelterCluster.org
Coordinating Humanitarian Shelter

Global Shelter Cluster Strategy 2018 - 2022

AIM STRENGTHENED SHELTER AND SETTLEMENTS RESPONSES THAT BUILD RESILIENT COMMUNITIES

1	2	3	4
 COORDINATION	 ADVOCACY	 EVIDENCE-BASED RESPONSE	 CAPACITY
Coordination contributes to a localised, predictable, effective and timely response	Increased recognition of shelter and settlement in humanitarian response and recovery	Shelter response informed by evidence, best practice and learning	Shelter sector capacity to address ongoing and emerging challenges
<p>1.1 PREDICTABLE, TIMELY, EFFECTIVE Support and services for Shelter Clusters</p> <p>1.2 LOCALISED AND AREA-BASED Strengthening area-based coordination and promoting settlement approaches</p> <p>1.3 TRANSITION TO RECOVERY Facilitating transition to recovery coordination, enhancing engagement with governments and development actors</p> <p>1.4 INTEGRATED RESPONSE Effective inter-cluster coordination and joint response planning approaches</p>	<p>2.1 IMPORTANCE OF SHELTER AND SETTLEMENT Strengthened understanding of shelter and settlement's critical multi-sector impact</p> <p>2.2 ENGAGEMENT Increased donor and agency engagement and support for shelter and settlements sector</p> <p>2.3 RESPONSE FUNDING Critical funding and response gaps are monitored, communicated and supported</p> <p>2.4 INFLUENCING Engaging others: appropriate urban assistance, cash and markets programming, area-based approaches</p>	<p>3.1 AVAILABLE AND USED Evidence available and used to inform planning, coordination and decision making</p> <p>3.2 EVIDENCE GAPS FILLED Key Shelter and Settlement Evidence Gaps Filled</p> <p>3.3 CAPITALISATION Knowledge Management systems in place to capitalise on lessons learnt as well as best practice in order to bring about change in sector policy and practice</p>	<p>4.1 SKILLS Increased and localised shelter response capacity</p> <p>4.2 PREPAREDNESS Country workshops and IRLP</p> <p>4.3 UTILISING CASH AND MARKETS Shelter responders apply cash modalities appropriately</p> <p>4.4 FUTURE OF SHELTER AND SETTLEMENT Analysis of sector future response needs and capacity</p>
MAINSTREAMED PROTECTION, GENDER, DISABILITY AND ENVIRONMENT			

 Click or scan to access all strategy documents

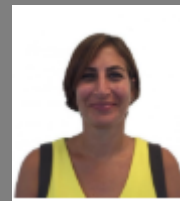
Overview of the agenda

- 14.00 – 14.10 Welcome – Introductions - Revision of the agenda
- 14.10 – 14.40 Updates on key issues from the field
- 14.40 – 14.50 Updates on the GSC activities and services offered
- 14: 50 – 15:00 GSC Strategy 2018-2022
- 15: 00 – 15:15 Answers to questions
- 15: 15 – 15:30 AOB

Answers to questions



Brett Moore,
GSC Coordinator,
UNHCR



Ela Serdaroglu,
GSC Coordinator,
IFRC

Upcoming...

Satisfaction Survey to prepare to:

GSC meeting and related events:
1-5 October in Geneva

Make sure you have subscribed to:

www.sheltercluster.org/newsletter



Global Shelter Cluster
ShelterCluster.org
Coordinating Humanitarian Shelter



Global Shelter Cluster
ShelterCluster.org
Coordinating Humanitarian Shelter

Thank you!

Supported by:



Humanitarian Aid
and Civil Protection