



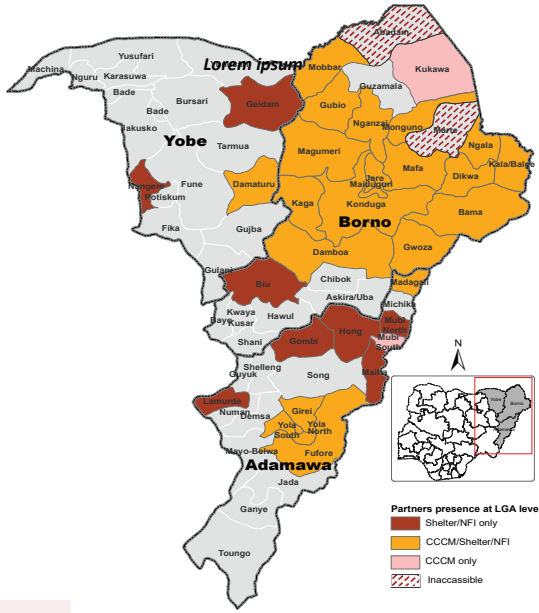
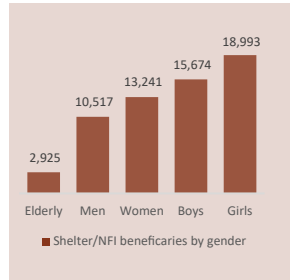
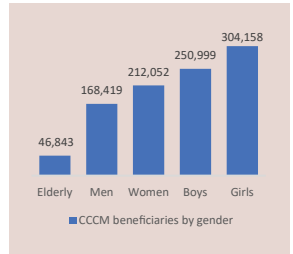
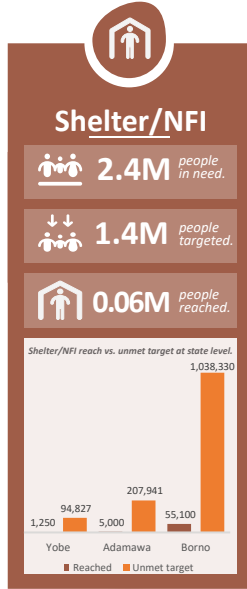
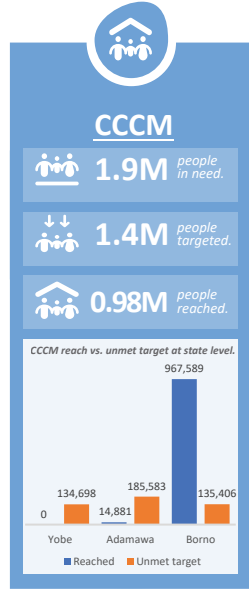
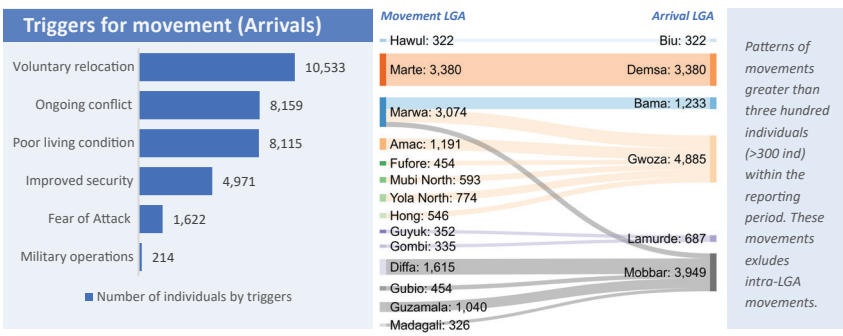
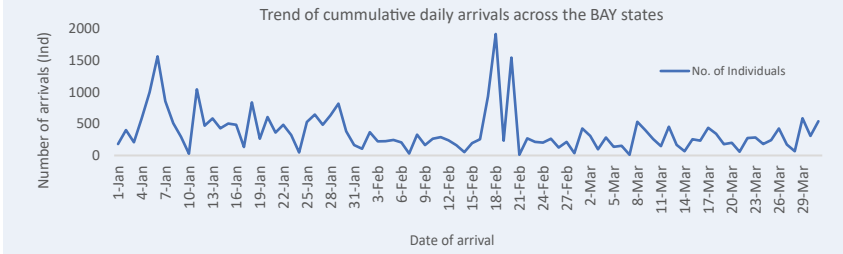
Training for CCCM/Shelter/NFI partners on new reporting tool for 4Ws. Photo credit: CCCM/Shelter/NFI Sector.

### 2021 Response highlights

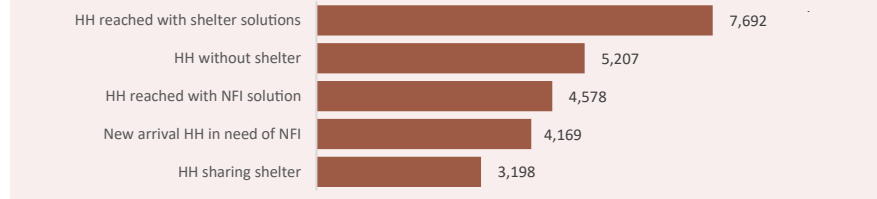
- 36,460 individuals benefitted from emergency, reinforced and transitional shelter solutions.
- 22,390 individuals received improved, basic and complimentary NFI kits.
- 69,547 eligible individuals were registered from January till date
- 100 households were reached through cash/voucher for NFI.

### Overview

The reporting period saw a continued displacement of persons from the BAY states. A total of 33,614 individuals (ind), with Gwoza (5,688 ind) and Dikwa (3,901 ind) LGAs recording the highest number of arrivals. Additionally, major arrivals were recorded in Askira/Uba (3,749 ind), Monguno (2,416 ind), Bama (2,165 ind), Michika (1,891 ind), Biu (1,472 ind), Mubi North (1,468 ind), Mobbar (1,161 ind), Gombi (1,135 ind), Mubi South (1,009 ind) and Girei (1,001 ind) LGA. The sector partners provided emergency shelter solutions and non-food items (NFI) to 12,270 households (HH).



### Shelter/NFI reach and gaps overview



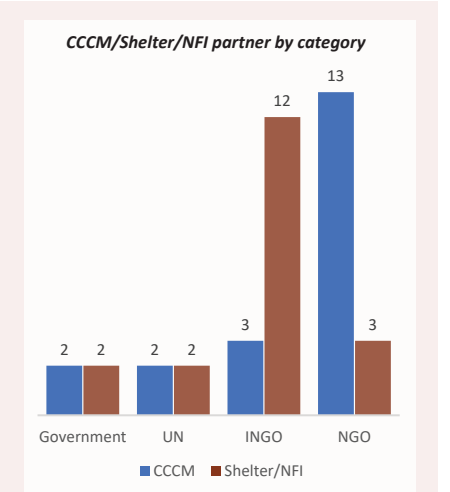
### Response

CCCM operations on site have continued to boost the living condition of the displaced through proper site facilitation, campaign awareness, FGDs, complaints and feedback mechanisms, camp level coordination meetings (once every month per camp with the flexibility of an Ad-hoc meeting if there is a need) and hygiene promotion while abiding/adhering to the COVID-19 prevention protocols. As response towards the fight to curb fire outbreaks, CCCM partners have engaged in series of site improvement activities such as clearing of drainages, environmental waste management, rehabilitation of fire stations, rapid assessment of camp facilities and structures to ascertain the gaps and further advocacy which has led to some interventions in camps and camp-like settings.

During the reporting period 4,578HH received NFI kits, 6,694HH received emergency shelter solution support, 528HH received reinforced/transitional shelter solutions and 470HH were supported with housing repair and improvements while 100HH received cash/voucher for NFI.

### Challenges/Gaps

Congestion continuing to pose great challenges in every aspect of standardizing camp management in camps in the Northeast and decongestion of highly congested camps and reception centres in the BAY states remains a key priority. Over 179,000HH require shelter and NFI support to cope with the harsh weather condition. The fluid state of security has limited the sector partners access to locations of interventions. Additionally, sector partners are faced with funding constraints which is slowing down responses to the needs identified.



**Source of Data:** CCCM/Shelter NFI Sector 5W, Site tracker, Displacement Tracking Matrix (DTM) round 35, Emergency Tracking Tool (ETT) January - March, 2021 and Financial Tracking Services

For more information contact:  
**Robert Odhiambo:** +234 903 428 3512  
**Mahamat Alhadi:** +234 901 351 509  
**Email:** [cccmshelternga@humanitarianresponse.info](mailto:cccmshelternga@humanitarianresponse.info)  
**Website:** <https://www.humanitarianresponse.info/en/operations/nigeria/shelter-and-nfi>