

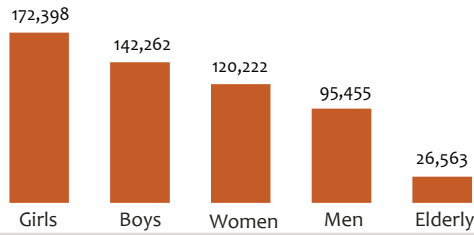
TOTAL BENEFICIARIES SUPPORTED

111,380 HHs **556,900** INDs

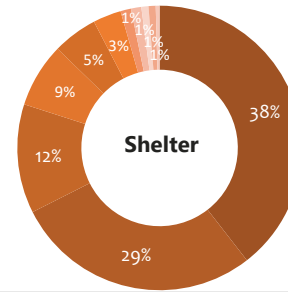
HRP Beneficiaries: 547,180
Non-HRP beneficiaries: 9,720

64,313(HH) 47,067 (HH)

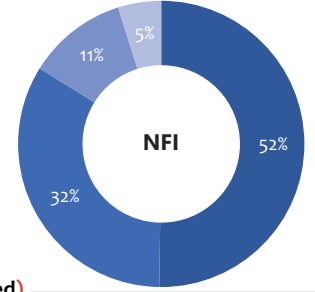
DEMOGRAPHICS (Indiv)



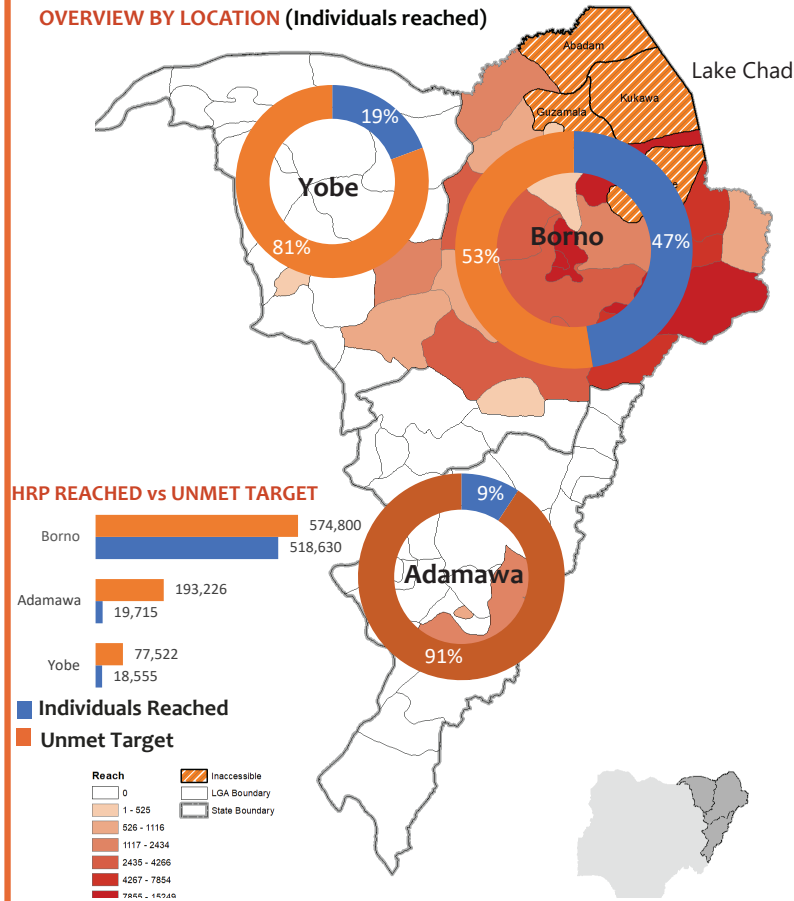
- Emergency shelter Kit (distribution)
- Emergency shelter - Bama (construction)
- Housing Repair/Improvement Kit
- Transitional Shelter kit (Distribution)
- Reinforced/Emergency shelter - BAMA model
- Reinforced Shelter - Dikwa model (construction)
- Reinforced Shelter - Bakasi model (construction)
- Transitional shelter (mud housing)
- Communal Shelter/Reception Infrastructures
- Permanent Shelter
- Cash/Voucher for Rental



- Improved NFI kit (distribution)
- Standard NFI Kit (distribution)
- NFI Loose Items (Need basis Items)
- Cash/voucher for NFI



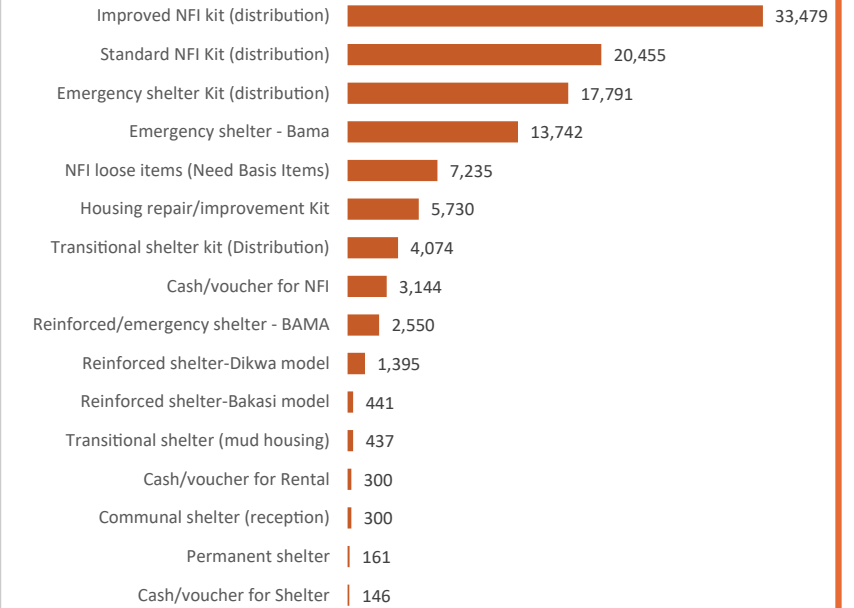
OVERVIEW BY LOCATION (Individuals reached)



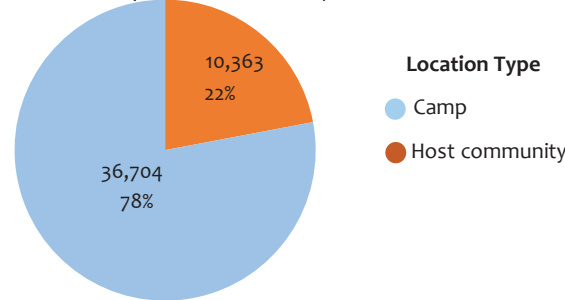
OVERVIEW BY SECTOR OBJECTIVES AND INDICATORS

- Objective 1: Ensure sufficient, coordinated and adequate delivery of emergency shelter solutions to respond to the immediate shelter needs of the affected people**
of households provided with emergency shelter solutions and support ----- 34,383
- Objective 2: Deliver reinforced/ transitional shelters and repair assistance to respond to the specific shelter needs of the affected people**
of households receiving reinforced / transitional shelter solutions ----- 6,493
of households supported with housing repair and improvements interventions -- 5,730
of conditional shelter cash assistance delivered to households in need ----- 300
- Objective 3: Deliver flexible, coordinated, adequate and harmonized NFI kits, (including assessment, distribution and post-distribution monitoring to affected populations**
of households provided with NFI kits (items in-kind or voucher) ----- 61,169
of households provided with Cash/Voucher for NFI ----- 3,144
of NFI Post Distribution Monitoring conducted and shared ----- 19
of Shelter Post Construction Monitoring conducted and shared ----- 11

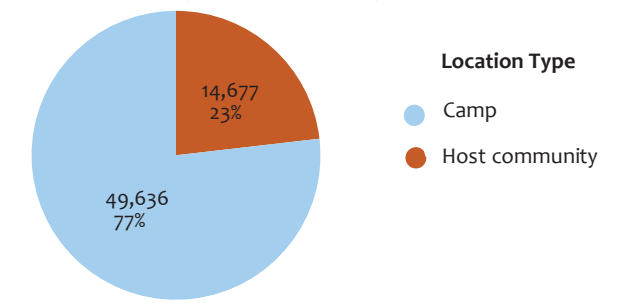
TOTAL OVERVIEW (Household reached)



SHELTER (Household reached)



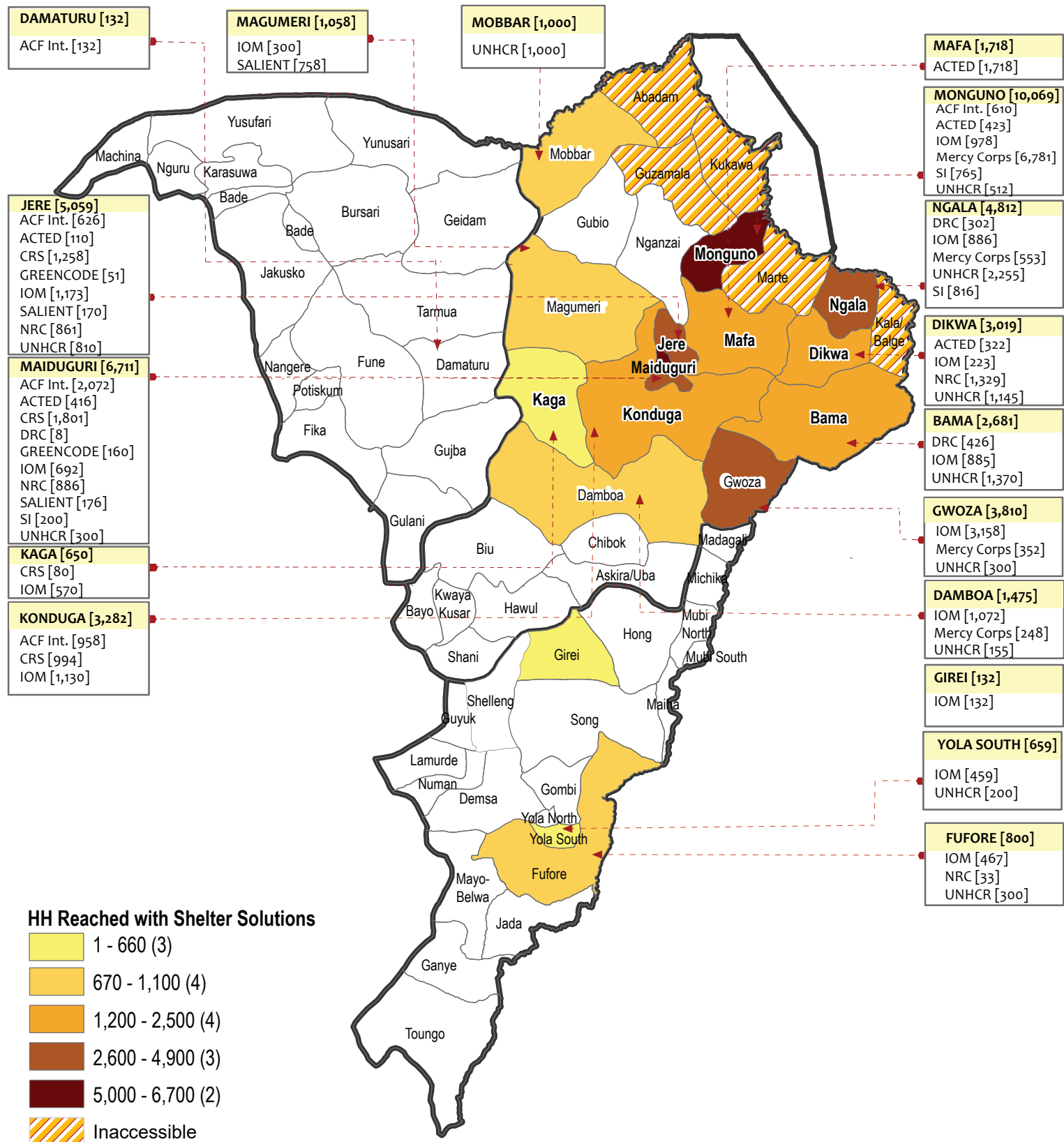
NFI (Household reached)



Source/Reporting period : 4W December 2021
For more information contact: cccmshelternga@humanitarianresponse.info
<https://www.humanitarianresponse.info/en/operations/nigeria/shelter-and-nfi>
<https://www.sheltercluster.org/response/nigeria>



# of LGAs in Presence 17 <small>Local government areas where partners had carried out shelter activities</small>	# of Partners Presence 11 <small>Number of shelter partners presently implementing</small>	UN Agencies, Int'l NGOs, Nat'l NGOs 2 7 2	January - December 2021
---	---	---	-------------------------



Data Source

* The boundaries used in this map are not officially endorsed by the United Nations

Contacts

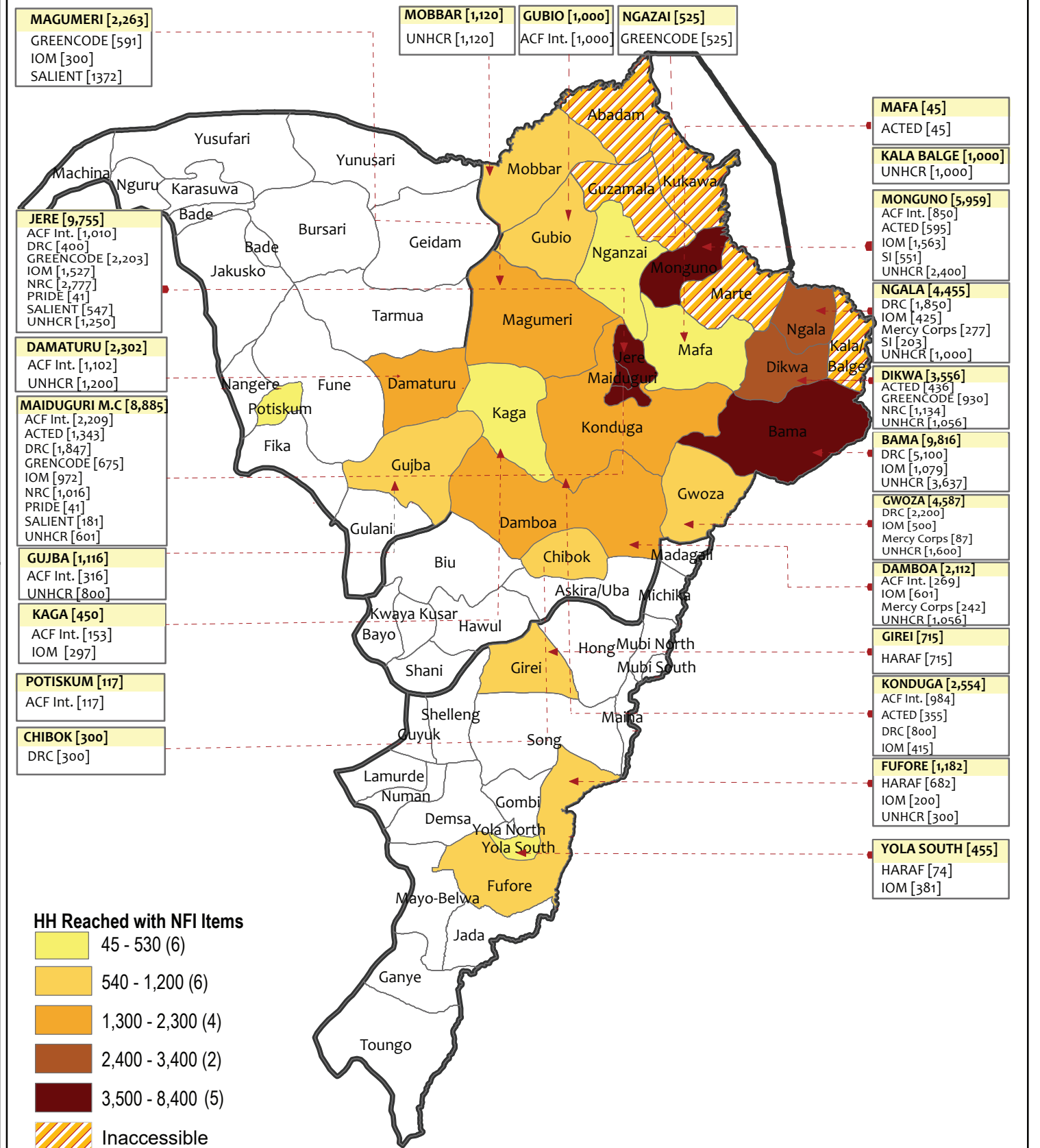
shelter.cccm.nigeria@gmail.com
+2349075111558, +2349087360402

State Boundary

Hard to reach LGA



# of LGAs in Presence 23 <small>Local government areas where partners had carried out NFI distribution activities</small>	# of Partners Presence 10 <small>Number of NFI partners presently implementing</small>	UN Agencies, Int'l NGOs, Nat'l NGOs 2 5 2	January - December 2021
--	---	---	-------------------------



Data Source

* The boundaries used in this map are not officially endorsed by the United Nations

Contacts

shelter.cccm.nigeria@gmail.com
+2349075111558, +2349087360402

State Boundary

Hard to reach LGA

