

**TOTAL BENEFICIARIES SUPPORTED**

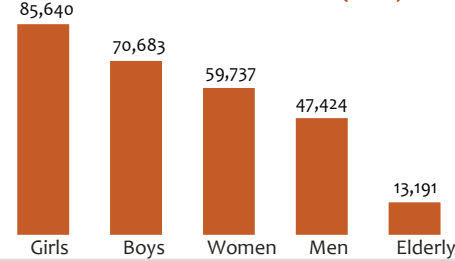
**55,335** HHs **276,675** INDs

HRP Beneficiaries: 267,565

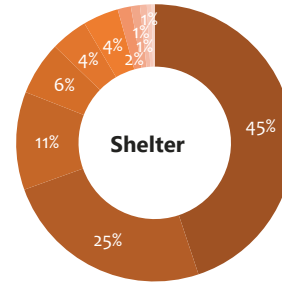
Non-HRP beneficiaries: 9,110

26,802(HH) 28,533 (HH)

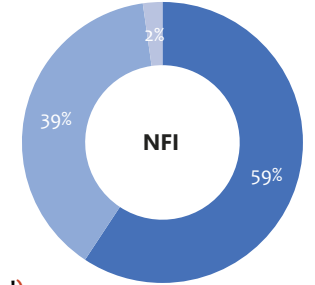
**DEMOGRAPHICS (Indiv)**



- Emergency shelter Kit (distribution)
- Emergency shelter - Bama (construction)
- Housing Repair/Improvement Kit
- Reinforced/Emergency shelter - BAMA model
- Transitional Shelter kit (Distribution)
- Reinforced Shelter - Dikwa model (construction)
- Reinforced Shelter - Bakasi model (construction)
- Communal Shelter/Reception Infrastructures
- Transitional shelter (mud housing)
- Permanent Shelter
- Cash/Voucher for Rental



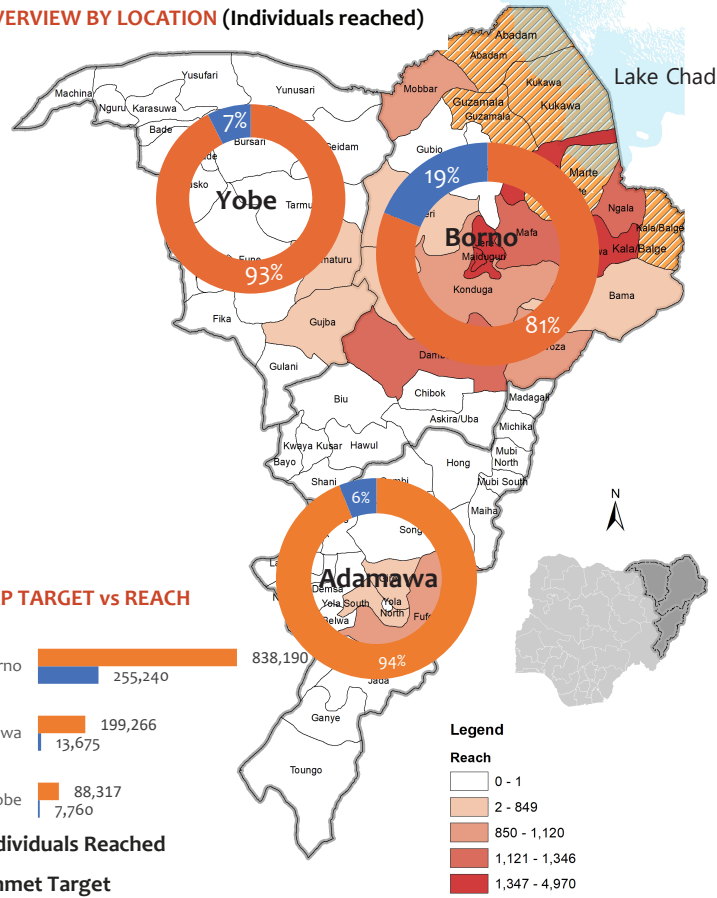
- Improved NFI kit (distribution)
- Standard NFI Kit (distribution)
- Cash/voucher for NFI



**TOTAL OVERVIEW (Household reached)**

Transitional shelter kit (Distribution)	1,230
Transitional shelter (mud housing)	228
Standard NFI Kit (distribution)	10,313
Reinforced/emergency shelter - BAMA...	1,787
Reinforced shelter - Dikwa model	1,186
Reinforced shelter - Bakasi model	441
Permanent shelter	161
Improved NFI kit (distribution)	15,889
Housing repair/improvement Kit	3,265
Emergency shelter Kit (distribution)	12,807
Emergency shelter - Bama...	7,028
Communal shelter (Reception...)	300
Cash/voucher for Rental	100
Cash/voucher for NFI	600

**OVERVIEW BY LOCATION (Individuals reached)**



**HRP TARGET vs REACH**

State	Unmet Target	Individuals Reached
Borno	838,190	255,240
Adamawa	199,266	13,675
Yobe	88,317	7,760

**OVERVIEW BY SECTOR OBJECTIVES AND INDICATORS**

**Objective 1: Ensure sufficient, coordinated and adequate delivery of emergency shelter solutions to respond to the immediate shelter needs of the affected people**

# of households provided with emergency shelter solutions and support ----- 21,922

**Objective 2: Deliver reinforced/ transitional shelters and repair assistance to respond to the specific shelter needs of the affected people**

# of households receiving reinforced / transitional shelter solutions ----- 3,246

# of households supported with housing repair and improvements interventions -- 3,265

# of conditional shelter cash assistance delivered to households in need ----- 100

**Objective 3: Deliver flexible, coordinated, adequate and harmonized NFI kits, (including assessment, distribution and post-distribution monitoring to affected populations**

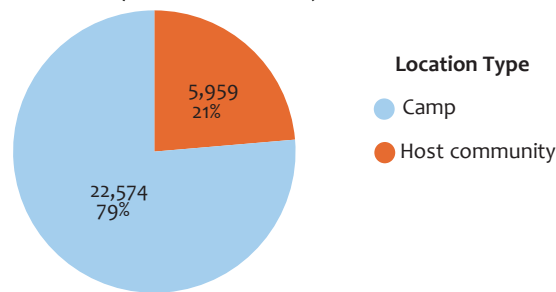
# of households provided with NFI kits (items in-kind or voucher) ----- 26,202

# of households provided with Cash/Voucher for NFI ----- 600

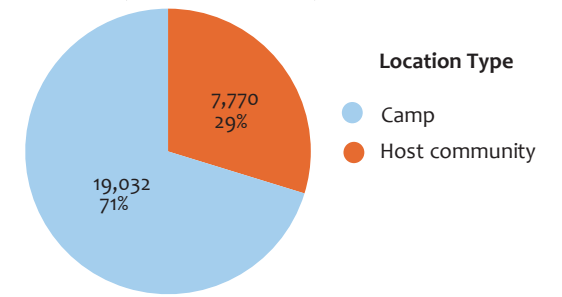
# of NFI Post Distribution Monitoring conducted and shared ----- 17

# of Shelter Post Construction Monitoring conducted and shared ----- 11

**SHELTER (Household reached)**



**NFI (Household reached)**

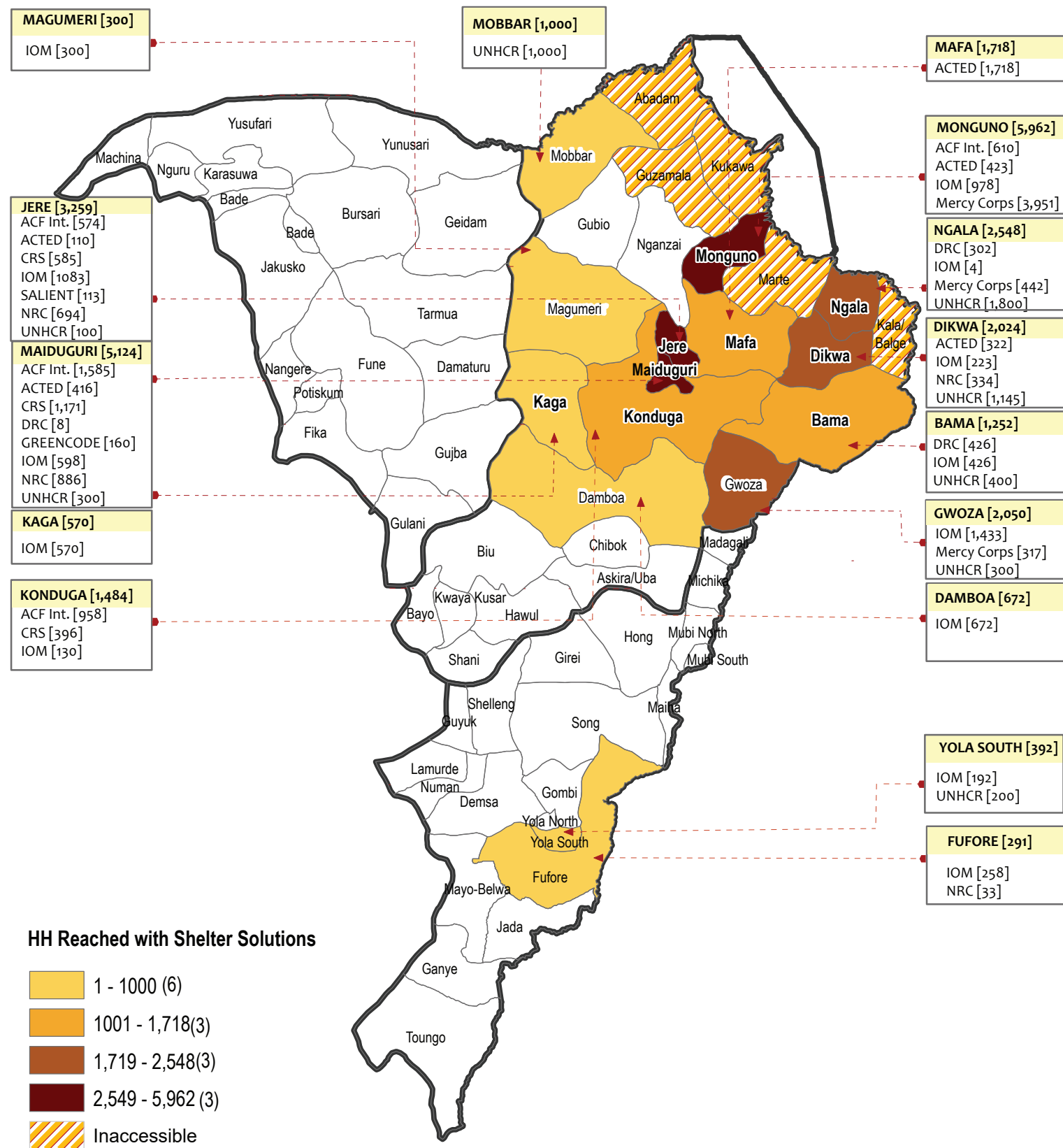


Source/Reporting period : 4W June 2021  
For more information contact: [cccmshelternga@humanitarianresponse.info](mailto:cccmshelternga@humanitarianresponse.info)  
<https://www.humanitarianresponse.info/en/operations/nigeria/shelter-and-nfi>  
<https://www.sheltercluster.org/response/nigeria>





<b># of LGAs in Presence</b> 16 <small>Local government areas where partners had carried out shelter activities</small>	<b># of Partners Presence</b> 10 <small>Number of shelter partners presently implementing</small>	<b>UN Agencies, Int'l NGOs, Nat'l NGOs</b> 2    7    1	<b>January - June 2021</b>
---	---	---	----------------------------



<b># of LGAs in Presence</b> 19 <small>Local government areas where partners had carried out NFI distribution activities</small>	<b># of Partners Presence</b> 9 <small>Number of NFI partners presently implementing</small>	<b>UN Agencies, Int'l NGOs, Nat'l NGOs</b> 2    5    2	<b>January - June 2021</b>
--	--	---	----------------------------

