

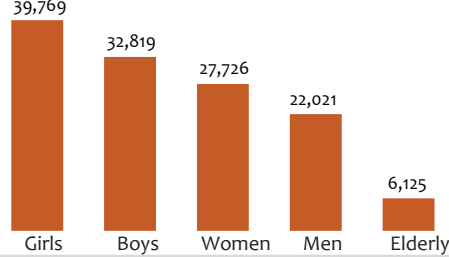
**TOTAL BENEFICIARIES SUPPORTED**

25,692<sub>HHs</sub> 128,460<sub>INDs</sub>

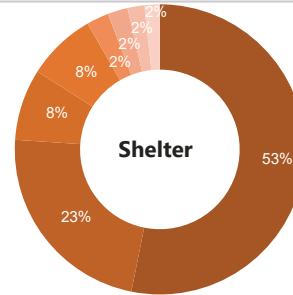
HRP Beneficiaries: 116,825  
Non-HRP beneficiaries: 11,635

12,351 (HH) 13,341 (HH)

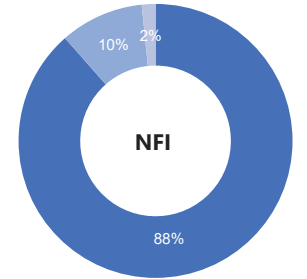
**DEMOGRAPHICS (Indiv)**



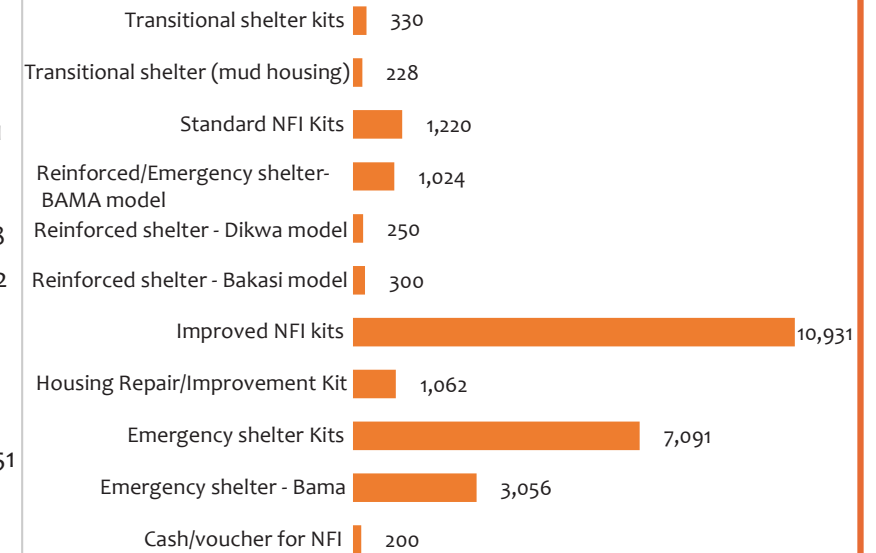
- Emergency shelter Kit (distribution)
- Emergency shelter - Bama (construction)
- Housing Repair/Improvement Kit
- Reinforced/Emergency shelter - BAMA model
- Transitional Shelter kit (Distribution)
- Reinforced Shelter - Bakasi model (construction)
- Reinforced Shelter - Dikwa model (construction)
- Transitional shelter (mud housing)



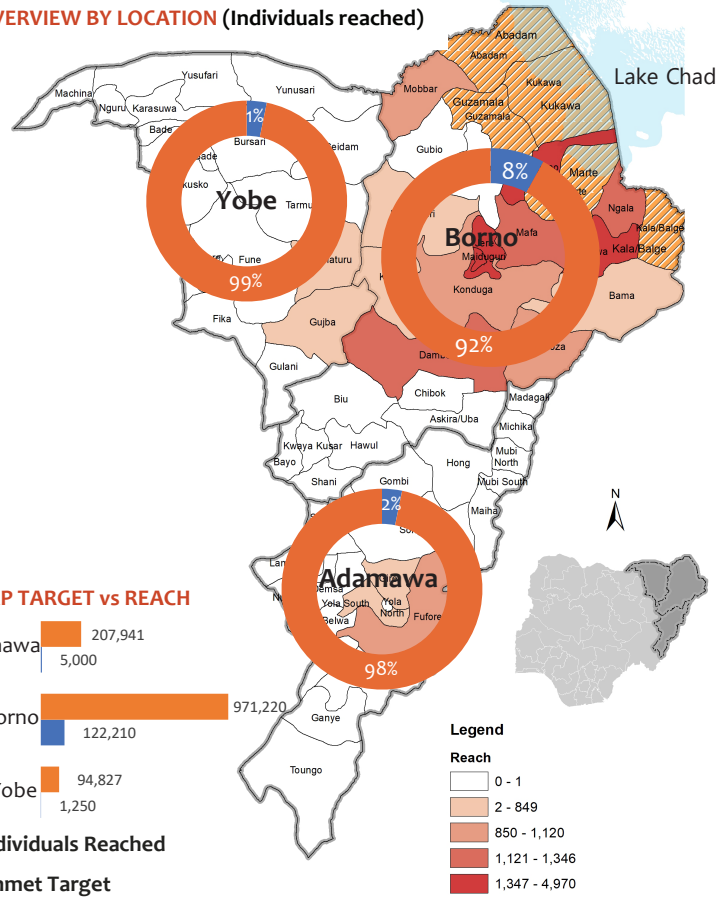
- Improved NFI kit (distribution)
- Standard NFI Kit (distribution)
- Cash/voucher for NFI



**TOTAL OVERVIEW (Household reached)**



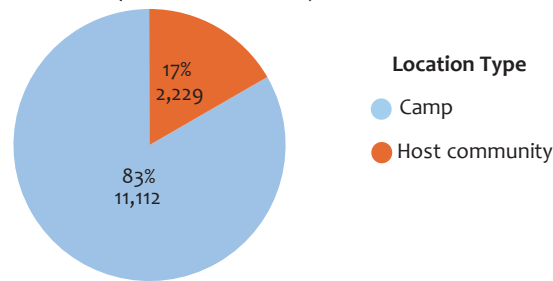
**OVERVIEW BY LOCATION (Individuals reached)**



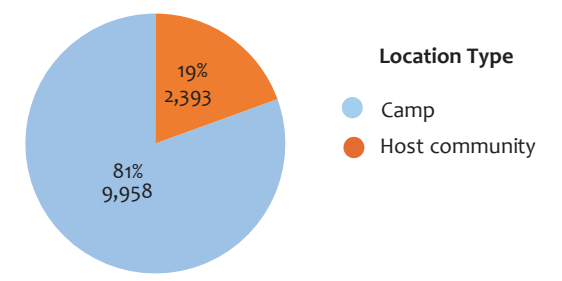
**OVERVIEW BY SECTOR OBJECTIVES AND INDICATORS**

- Objective 1: Ensure sufficient, coordinated and adequate delivery of emergency shelter solutions to respond to the immediate shelter needs of the affected people**  
# of households provided with emergency shelter solutions and support ----- 11,171
- Objective 2: Deliver reinforced/ transitional shelters and repair assistance to respond to the specific shelter needs of the affected people**  
# of households receiving reinforced / transitional shelter solutions ----- 1,108  
# of households supported with housing repair and improvements interventions ----- 1,062  
# of conditional shelter cash assistance delivered to households in need ----- 0
- Objective 3: Deliver flexible, coordinated, adequate and harmonized NFI kits, (including assessment, distribution and post-distribution monitoring to affected populations)**  
# of households provided with NFI kits (items in-kind or voucher) ----- 12,351  
# of NFI Post Distribution Monitoring conducted and shared ----- 9  
# of Shelter Post Construction Monitoring conducted and shared ----- 8

**SHELTER (Household reached)**

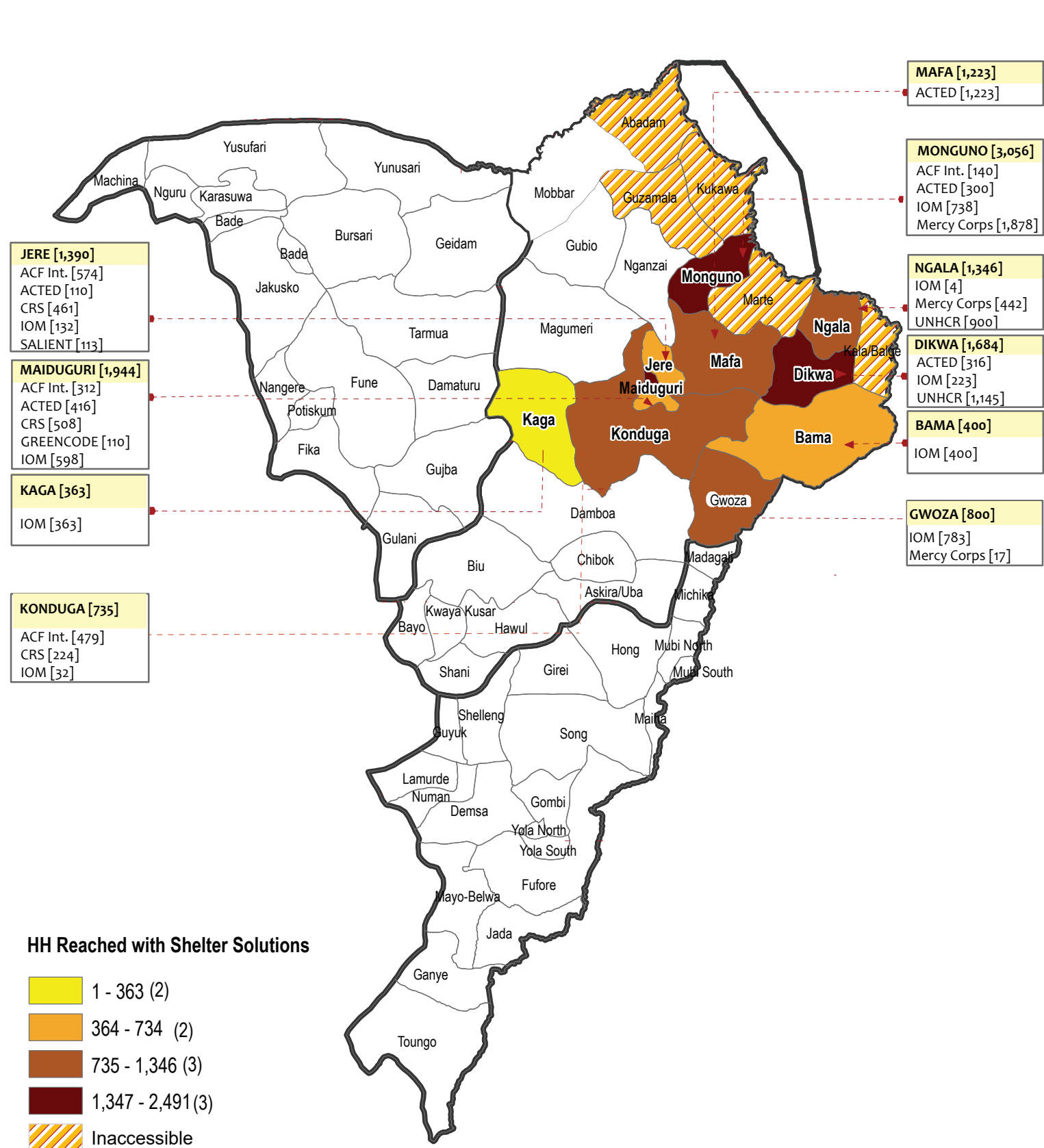


**NFI (Household reached)**





<b># of LGAs in Presence</b> 17 <small>Local government areas where partners had carried out shelter activities</small>	<b># of Partners Presence</b> 10 <small>Number of shelter partners presently implementing</small>	<b>UN Agencies, Int'l NGOs, Nat'l NGOs</b> 2      7      1	<b>January - May 2021</b>
---	---	---	---------------------------



<b># of LGAs in Presence</b> 17 <small>Local government areas where partners had carried out NFI distribution activities</small>	<b># of Partners Presence</b> 9 <small>Number of NFI partners presently implementing</small>	<b>UN Agencies, Int'l NGOs, Nat'l NGOs</b> 2      5      2	<b>January - May 2021</b>
--	--	---	---------------------------

