

Population Movement Operation in Cox's Bazar



Malte Landgraff
Relief Delegate German Red Cross
Cox's Bazar, Bangladesh

Content

I. Overview Population Movement Operation in CXB

II. Shelter: Challenges and options

III. NFI: Energy for cooking

I. Overview

- **Long history of Rohingya conflict between Myanmar and Bangladesh**
- **Limited political interest in sustainable solution**
- **Hilly and sandy terrain (former national park): no infrastructure, no services**
- **Dependancy on humanitarian assistance**
- **Very congested space in the camp & many different organisations**
- **Recurrent risks of cyclones and monsoon further increased by huge number of refugees**

I. Overview



II. Shelter – current situation

- **Highly politicised topic: GoB has prohibited durable shelter solutions**
- **Options: Standard shelter kits, shelter tie-down-kits, shelter upgrade kits...**
- **A common but very basic standard has been established throughout the camp**
- **PASSA-Trainings (light) conducted by RC-partners before distribution of shelter kits**
- **People at risk, especially during cyclone and monsoon!**

II. Shelter – options for the future

Newly approved model for „mid-term shelter“:

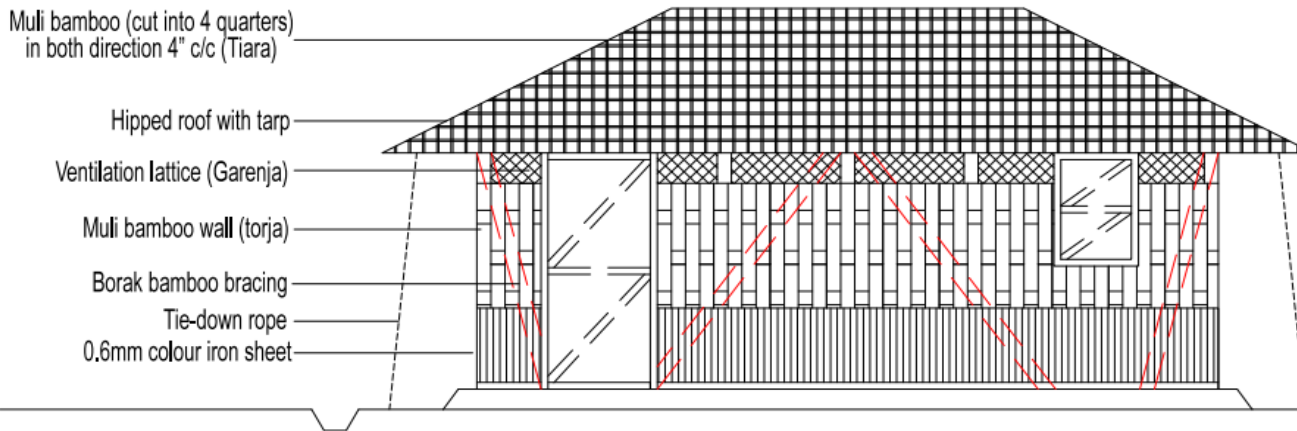


II. Shelter – options for the future

- **Humanitarian lobbying towards GoB**
- **Technical WG (Caritas, IFRC, IOM and UNHCR) developed the „mid-term shelter“ a *practical solution*: balance between needs and what can be approved**
- **Based on the design of rural bangladeshi houses, previously trialled in other parts of Bangladesh**
- **Frame of precast concrete pillars as main improvement, different framing, cladding and roofing systems possible**
- **Four different options available**
- **HH-led approach**

II. Shelter – options for the future

OPTION 1



A FRONT ELEVATION 1:40

SIGNATURE

* Dimensions are indicative and to be adjusted to site condition



DESIGNED BY:
TECHNICAL WORKING GROUP FOR MID-TERM SHELTER
 RECOMMENDED BY:
SHELTER AND NFI SECTOR

PROJECT TITLE:
MID-TERM SHELTER FOR DISPLACED CITIZENS OF MYANMAR
 DESIGN DRAFT, MARCH 28, 2018

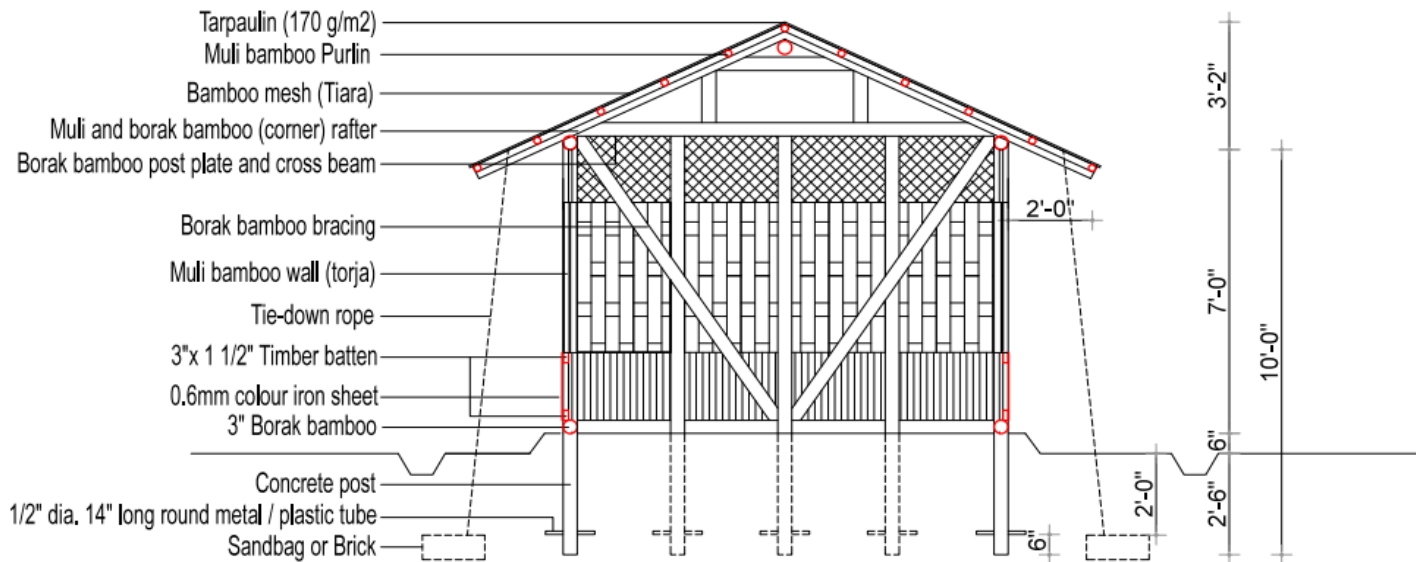
PAGE TITLE:
FRONT ELEVATION
 SCALE: 1:40

PREPARED BY:
LM
 NOTED BY:
RRRC

APPROVED BY:
RRRC
 SHEET NO:
3 5

II. Shelter – options for the future

OPTION 1



SECTION A-A 1:40

SIGNATURE

* Dimensions are indicative and to be adjusted to site condition



DESIGNED BY:
TECHNICAL WORKING GROUP FOR MID-TERM SHELTER
RECOMMENDED BY:
SHELTER AND NFI SECTOR

PROJECT TITLE:
MID-TERM SHELTER FOR DISPLACED
CITIZENS OF MYANMAR
DESIGN DRAFT MARCH 28, 2018

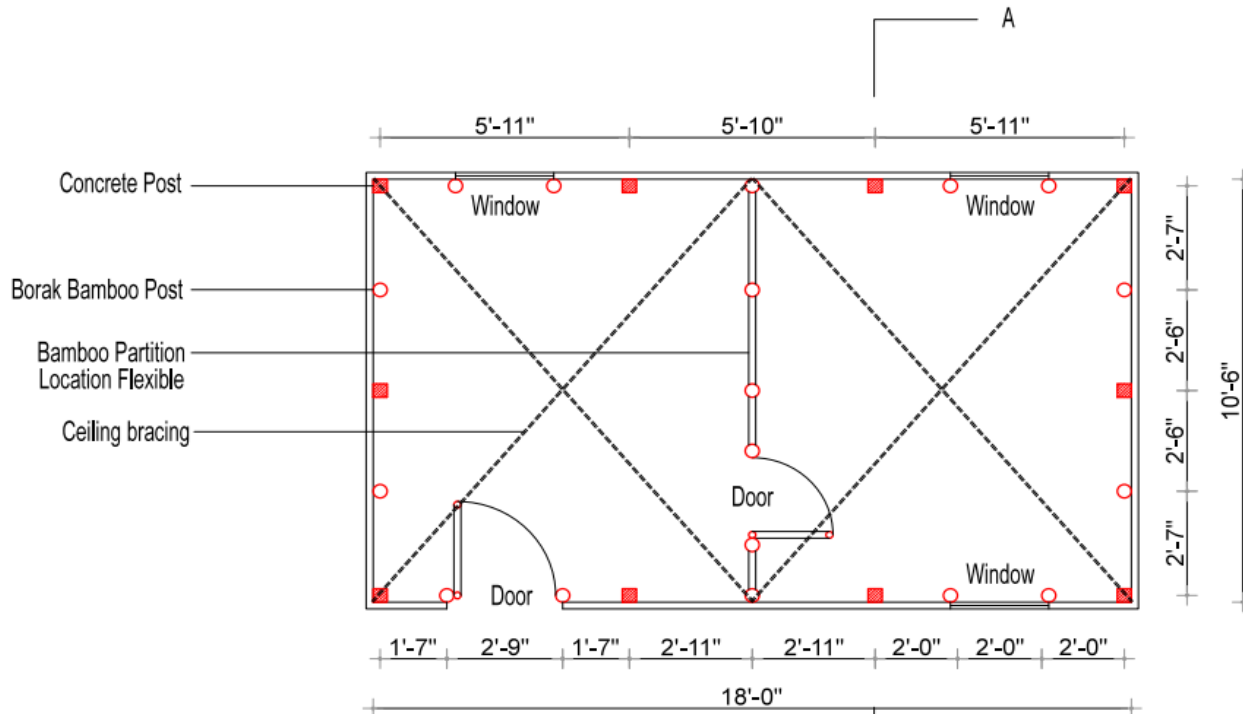
PAGE TITLE:
SECTION A-A
SCALE: 1:40

PREPARED BY:
LM
NOTED BY:
APPROVED BY:
RRRC

A
SHEET NO.:
4 5

II. Shelter – options for the future

OPTION 1



FLOOR PLAN 1:40
5 PEOPLE (189 ft2)

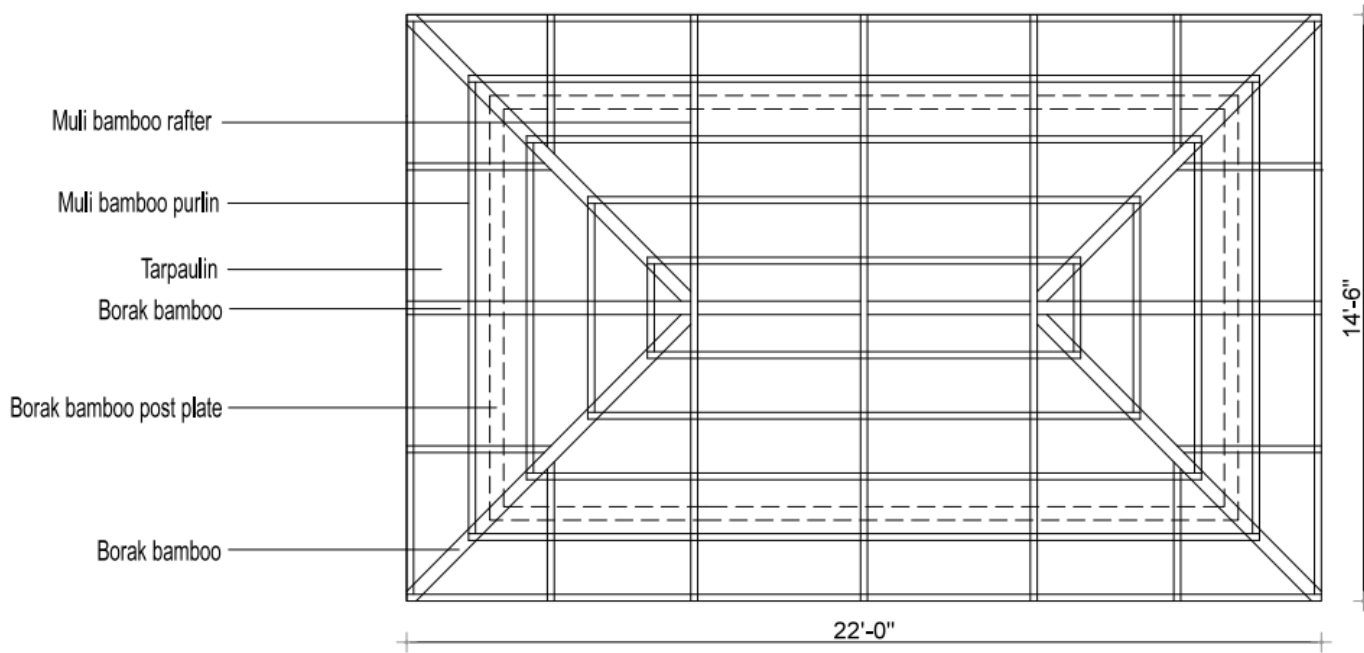
SIGNATURE

* Dimensions are indicative and to be adjusted to site condition

	DESIGNED BY: TECHNICAL WORKING GROUP FOR MID-TERM SHELTER	PROJECT TITLE: MID-TERM SHELTER FOR DISPLACED CITIZENS OF MYANMAR	PAGE TITLE: FLOOR PLAN	PREPARED BY: LM	APPROVED BY: RRRC	A SHEET NO: 1 5
	RECOMMENDED BY: SHELTER AND NFI SECTOR	DESIGN DRAFT MARCH 28, 2018	SCALE: 1:40	NOTED BY:		

II. Shelter – options for the future

OPTION 1



⊕ ROOF PLAN 1:40

SIGNATURE

* Dimensions are indicative and to be adjusted to site condition

	DESIGNED BY: TECHNICAL WORKING GROUP FOR MID-TERM SHELTER	PROJECT TITLE: MID-TERM SHELTER FOR DISPLACED CITIZENS OF MYANMAR	PAGE TITLE: ROOF PLAN	PREPARED BY: LM	APPROVED BY: RRRC	A SHEET NO: 2 / 5
	RECOMMENDED BY: SHELTER AND NFI SECTOR	DESIGN DRAFT: MARCH 28, 2018	SCALE: 1:40	NOTED BY:		

II. Shelter – options for the future

Three components:

- 1. Software – PASSA training for each beneficiary (develop shelter awareness, identification of risks and solutions etc.)**
- 2. Hardware – shelter material according to BOQ, technical assistance where required**
- 3. Site improvement: E.g. slope stabilization, steps, drainage, planting vetiver grass to stabilize the ground**

II. Shelter – options for the future

Flexibility:

- **Four different models available**
- **Individual preferences and needs can be taken into account (elderly, disabilities etc.)**
- **Multi-family units are possible**
- **Households can incrementally improve their shelter, e.g. upgrade cladding, framing or roofing**
- **Pillars are movable and can be carried (>relocation?)**

II. Shelter – options for the future

Red Cross/Red Crescent Project:

- **Timespan: 12 months, starting in June**
- **Target: 5.000 Households**
- **Budget: 3.750.000 CHF**
- **Donor interest unclear, but currently we have their attention**

Integration with other sectors: WASH, NFI, Cash, PGI, Livelihood etc.

II. Shelter – options for the future

Mid-term shelter:

- + better housing and protection for beneficiaries**
 - + positive experiences in other parts of Bangladesh**
 - + cost-efficient model**
 - + flexible and adaptable approach**
- ... but still not a cyclone-proof solution**

III. NFI – Energy for cooking

Current practice: Collection of firewood

Advantages	Disadvantages
Accessible fuel	Environmental impacts (deforestation, increasing risks of landslides, impact on wildlife habitat, e.g. elephants)
People are used to it	Health concerns in households
Small-scale income generation in the camp	Protection concerns related to collection of firewood
	Source of tension between refugees and host community

III. NFI – Energy for cooking

LPG as the preferred option (IOM & UNHCR):

- + less health risks and protection concerns**
 - + less environmental impact**
 - + cheapest option (26 USD/person/year)**
 - + Local vendors available**
 - + International experience in large refugee settings**
 - Acceptance of community unclear**
 - Exit strategy missing**
-

III. NFI – Energy for cooking

- **Pilot project for LPG about to start (75% Rohingya, 25% host community): LPG stove, cylinder, accessories and refill for six months**
- **Refilling system is key: voucher system with local vendors, mobile refilling stations**
- **Synergy effects with other programmes (e.g. shelter, environmental restoration etc.)**

?? Questions – Comments – Discussion ??

