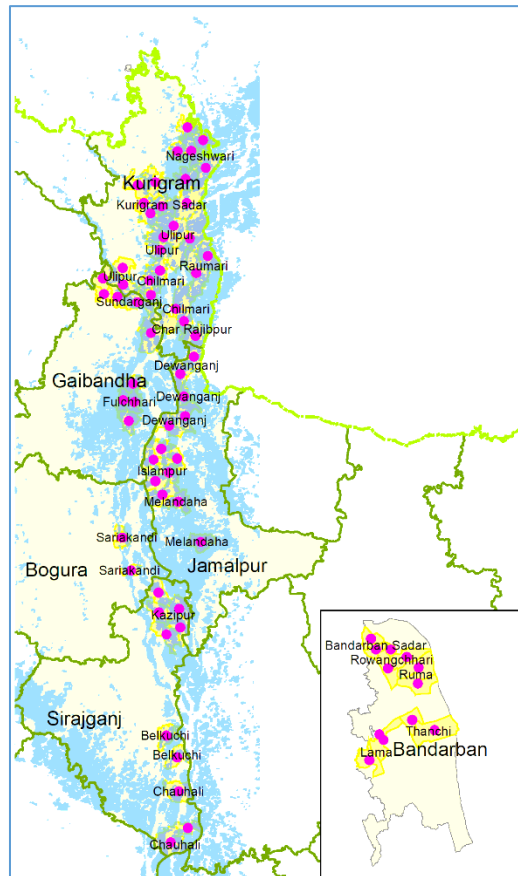


Post Emergency Response Inter-Agency Joint Needs Assessment

Monsoon Flood 2019

30 September 2019



Coordinated by
Supporting Bangladesh Rapid Needs Assessment Project-CARE
and
Start Fund Bangladesh

Table of Content

Topic	Page no
Executive Summary	3
Key Findings	4
Priority Intervention	5
1.1 Background and Introduction	6-7
1.2 Methodology	7
1.3 Assessment Areas	8
2. Demographic and Physiographic Characteristics of the affected community in the assessment areas	9-10
3. Sectoral damages of the monsoon flood 2019	11
4. Damages of community critical infrastructure	12-18
5. Maintenance and repair and impact to the damaged community infrastructures of monsoon flood 2017	19
6. Assistance, unmet needs and current Priorities	20 -24
6.1 Rapid Emergency Response	
6.2 Type of supports/assistances during rapid emergency response	
6.3 Effectiveness of rapid emergency response	
6.4 <i>Negative Coping Mechanism</i>	
6.5 <i>Current priorities and needs</i>	
6.6 Preferred Intervention Modalities	25
7. Response Gap	26
8. Key Findings and Recommendations	27
<i>Data Sources and References</i>	28
Glossary and Acronyms	28
Assessment timeline	28
Annex 1 : Detail table of the Severity of the sectoral damages (Table-1)	29-31
Annex: 2- Detail table of Current priorities of the Areas	31-32
Annex 3: total Affected Population and major socio economic data of the affected community	33
Annex 4: Assessment Team	34
Annex 5: Contributing Agency (Field level data collection)	35-36
Annex 6: Key Informants Interview questionnaire	37-42

Executive Summary

Bangladesh is one of the world's most vulnerable countries to climate change and also one of the most disaster prone countries in the world. The geographical location, land characteristics, multiplicity of rivers and the monsoon climate render Bangladesh highly vulnerable to natural hazards. In Bangladesh, floods are annual phenomena affecting up to up to 68% of the country in extreme cases. These disaster events have had a significant impact on people's lives, livelihoods and socioeconomic infrastructure in the affected areas, pushing a large number of people into poverty and food insecurity.

Heavy monsoon rain in July 2019 caused intense flooding across Northern Bangladesh. Nearly 3 million people are struggling with the impacts of the floods, the worst in two years since the 2017 monsoon flood. The Joint Needs Assessment (JNA) identified the nine most severely affected districts as: Kurigram, Jamalpur, Gaibandha, Sylhet, Sirajganj, Tangail, Sunamganj, Bogra and Bandarban. The Government and humanitarian stakeholders supported affected communities and mobilized resources to provide food and non-food items to people in the affected areas. However, even though, compared to the 2017 monsoon flood, the 2019 flood is not that widespread, it has impacted many districts, and the distress to the people and disruption created is severe and impact may last for a longer period. This is notably since the affected population is largely vulnerable due to geographical location, poverty, prolonged impact of flood 2017 and lack of resilience.

The rapid response implementing agency monitoring and post distribution monitoring reveal that there are still persisting needs at the community level. To have an overview on the effects and impact of the disaster responding agency decided to go for a 'Post Emergency Response Inter-Agency Joint Needs Assessment' for modalities of further intervention. The worst affected six districts (Bandarban, Bogra, Gaibandha, Jamalpur, Kurigram and Sirajganj) were selected as assessment area. The objective of this assessment is to present the full extent of the monsoon flood 2019 impact, define the current needs, and, in so doing, serve as the basis for designing strategy and guide to prioritized interventions.

The flood effect damage was highest in the livelihood sector, followed by community infrastructures and shelter as the priority sectors requiring urgent support for the flood damaged communities. The affected areas are highly agriculture dependent, attributing to loss of livelihoods among farmers. The floods washed away extensive sections of infrastructure (roads, bridges, culverts and more) in the affected districts making it the second affected sector. Some community infrastructures have been damaged since the flood of 2017, which resultantly made the infrastructures more vulnerable. Given the severity of the flood, shelter is the third biggest priority in the assessed unions. The high poverty rate compounded with weak infrastructures of the houses in northern region requires need for support in this sector.

The reconstruction efforts should be implemented in order to achieve the goal of improving resilience with priority given to livelihood, community infrastructure and Shelter. In addition, new ways of working are needed to better integrate humanitarian and development action.

Key Findings

- ❖ In Monsoon flood 2019 7.6 million people were affected in a way or other in 28 districts. 163 Upazilas fall under those 28 districts and 1030 Unions are affected from those 163 Upazilas.
- ❖ Out of the affected 28 districts the JNA phase-I identified nine district as severely affected. In the second phase of the response 6 districts are targeted for further assessment as there are still persisting needs.
 - For this study worst affected 6 districts were selected under which 20 Upazilas, 72 Unions and 1810 village/Ward in the union are covered
 - On an average more than 80% population were impacted by the monsoon flood in the assessed unions.
 - Number of Village/ward affected out of those 1810 villages are 1385
 - Estimated number of **population** affected in 1385 villages are 17,43,925
 - Estimated number of **households** affected in 1385 villages are 3,76,389
- ❖ Out of diverse physiographical characteristics char area, erosion prone area, flood plain, hilly areas were considered to have a comprehensive overview on the disaster.
- ❖ The highest affected population segment is aged from 20-49, where females (387629 est.) are more affected than male (353038 est.).
- ❖ When ranked more unions (29.2%) identified **livelihood** sector as the highest damaged sectors, which is followed by **community infrastructure** (25%) and **Shelter** sector (20%).
- ❖ The comparison between the damages of bridge/ culverts in 2019 next to the damages in 2017 shows a positive correlation over time. Within the 72 unions, a total of 432 community infrastructures (Bridges/culvert) were damaged during the 2019 monsoon flood in comparison to 279 in 2017 flood.
- ❖ Among the 72 surveyed unions under the six districts, a total of 237.95 KMs of embankments were damaged.
- ❖ Among the 72 surveyed unions under the six districts, in total 981 KM of earthen roads, 135.8 KM of Herring bond roads and 251.5 KM of Pucca road have been damaged in 2019 monsoon flood.
- ❖ A total of 427 educational institutions were damaged.
- ❖ A total of 110 markets were found non-functioning in 2019 in 72 surveyed unions under the six districts. Among the 110 non-functioning markets 2 were in Bandarban, 4 in Bogra, 24 in Gaibandha, 25 in Jamalpur, 44 in Kurigram and 11 in Sirajganj
- ❖ In total 516 religious buildings were damaged due to flooding in 2019.
- ❖ In total 69 health facilities were damaged in the 72 surveyed unions, among which 4 were in Bandarban, 2 in Bogra, 9 in Gaibandha, 25 in Jamalpur, 20 in Kurigram and 9 in Sirajganj.
- ❖ In terms of Repairing, 53 unions endured more impact due to flooding in 2019 where the infrastructures were not repaired after the flood in 2017.
- ❖ According to district wise allocation of fund and affected community, there is discrepancy in terms of the ratio of response and the number of affected community. Though Jamalpur has the highest number of the affected community while Kurigram has received the highest amount of fund.

Priority Intervention for Response

- ❖ Rapid emergency response had effectively helped affected community survive for the time being, however the damages left persisting needs and priorities for recovery in the area.
- ❖ The affected areas are mostly socio-economically vulnerable, various negative coping mechanisms were adopted by community to survive this flood impact. The highest negative coping mechanism were skipping meal, distress selling of livestock, in-country migration, taking loan and not taking treatment for health issues. Recovery initiatives will enable communities to restore their livelihood and socio-economic condition.
- ❖ Repair of the road is the **first priority** needs of the affected community.
- ❖ Livelihood and shelter fall under ranked two as the same number of union choose these two as their priority needs.
- ❖ Wash infrastructure repair and maintenances are the third priorities of the affected union.
- ❖ Food, seeds as agricultural inputs, and repair of bridge culvert marked as 4th, 5th and 6th priority respectively of the affected community.
- ❖ Almost 30% of the unions preferred cash for work (CfW) for repairing of community infrastructures. Direct cash support for the affected community and long term development activities are preferred interventions.

1.1 Background and Introduction

Bangladesh is vulnerable to almost all adverse climate change impacts including erratic pattern of rainfall that causes more intense monsoons and longer drier seasons. Risks of both pre-monsoon and monsoon extreme rainfall have become a new normal in the upstream and in the country as well, causing several major and unprecedented flooding in the last four years: 2016, 2017 and July 2019 monsoon floods and the flash flood of 2017, the earliest since 2000 in north-eastern Bangladesh. Statistically, 1988 flood was the highest recorded flood (in terms of magnitude and water level at Bahadurabad point) in Jamalpur until 2016 but the record has been outdated thrice in the next four years by the flooding of 2016, 2017 and this year's monsoon flood, each surpassing the earlier record.

In early July 2019, heavy monsoon rain and water from upstream triggered flooding in low lying areas of Northern, North Eastern and South Eastern parts of Bangladesh. Two major river systems in the North (Jamuna & Teesta) reached their highest water level recorded over the last 100 years. Out of the 28 districts affected, the most severely affected were Kurigram, Jamalpur, Gaibandha, Sirajganj, Sunamganj, Bogura and Bandarban. The flooding started on 9 July, peaked around 18 July and started decreasing from 22 July. The situation evolved and changed rapidly and due to the different geographic locations, the impact levels across the districts varied.

According to the Flood Forecasting Warning Centre (FFWC) report, when the water level was increasing in majority of the river stations, as part of its mandate [Needs Assessment Working Group \(NAWG\)](#) released its first situation report on 13 July. The inter-cluster meeting was called on 18 July as the water level peaked. The deteriorating flood situation called for a Joint Needs Assessment (JNA) meeting on 23 July, in Department of Disaster Management (DDM). All the significant humanitarian stakeholders and the relevant Govt. of Bangladesh (GoB) officials attended the meeting and all agreed to trigger a Monsoon Flood 2019 Joint Needs Assessment (JNA): Phase 1 Light. NAWG in coordination with all the clusters finalized and published the report on 28 July.

Govt. of Bangladesh provided support from the initial days of the flood and managed all the response activities. Alongside, many humanitarian actors, also have been quick to respond with dry food packages, standard food packages, and multi-purpose cash grants, WASH initiatives and hygiene kits. However, there have been concerns that significant pockets of affected people have needs that could not be addressed, which is not uncommon after an emergency response. To sum up all the response attempts and rapid needs analysis a Humanitarian Response Plan (HRP) meeting took place on 30 July. Afterwards, an overall Rapid Needs Assessment and sector specific rapid response analysis [HRP](#) was produced and published.

The number of affected population was not negligible. As of 28 July, 7.6 million people in 28 districts have been affected, with 536,000 houses fully or partially damaged, leading to the displacement of over 300,000 people¹. Low lying areas of more than 6,867 villages from 1,063 unions of 163 sub-districts from different districts were inundated. The floods, as well as landslides, have damaged 6,640 km of roads and other vital infrastructure. As a result of the heavy upstream flooding, 2,644 km of river bank eroded destroying the homes and land of 1654 households leaving them unable to return. An estimated 5 million people are at high risk of water-borne diseases with over 73,000 tube wells damaged, more than 100,000 latrines completely destroyed and inadequate hygiene materials, in particular for women and girls. According to the Department of Agricultural Extension (DAE), more than 500,000 livestock have been affected and 163,194 HA of crops damaged due to inundation of fields.

¹ Monsoon Flood 2019 Joint Needs Assessment (JNA): Phase 1 Light, Need Assessment Working Group (NAWG), Bangladesh, 2019 <https://reliefweb.int/report/bangladesh/monsoon-flood-2019-joint-needs-assessment-phase-1-light-needs-assessment-working>

Analyzing the situation above, it can evidently be said that a Rapid Needs Assessment was necessary for that particular point of time but not sufficient. The magnitude of the devastation and duration of suffering could not be fathomed through a JNA or met by rapid response only. People’s lives and livelihoods had been affected for the long-term and given the disaster vulnerability of those population, lasting impact of flood 2017, lack of resilience and inadequate funding for the huge number of affected population, detailed assessment for longer term projects are essential.

1.2 Methodology

To provide a rapid overview of the post emergency response situation while assessing the quality and effectiveness of emergency response along with identifying persisting needs, this assessment primarily targeted worst affected and most vulnerable 6 districts (Bandarban, Bogura, Gaibandha, Jamalpur, Kurigram and Sirajganj). For this assessment, several consultations were held with NGOs and INGOs that responded to the flood in 72 unions from 38 affected Upazilas of these six flood affected districts.

Purposive sampling was done to conduct structured interview (questionnaire in Annex 6). The target interviewees in 72 affected unions were: Union Parishad Chairman, Union Parishad Secretary, Ward Members and Local Community key informants.

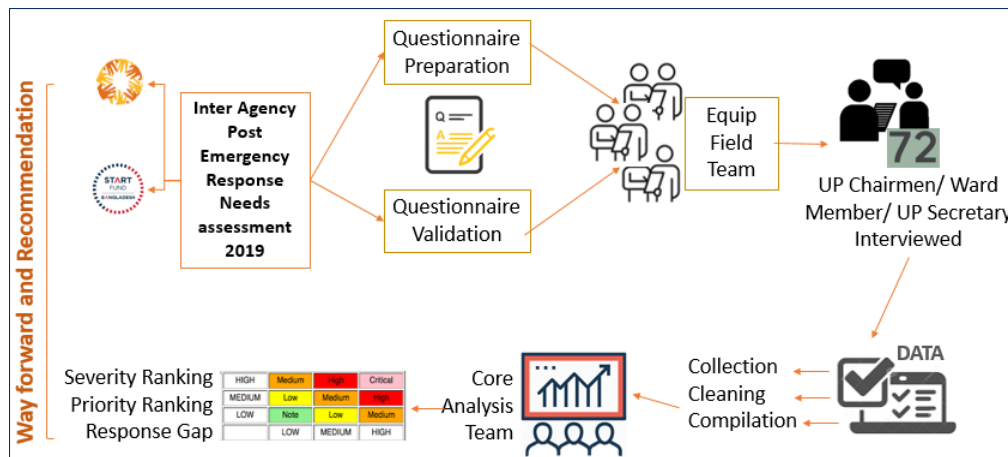


Figure 1.1: Inter Agency Post Emergency Response Needs Assessment 2019 methodology

After the reassurance of the necessity of post emergency response needs assessment with the relevant agencies, a structured questionnaire was developed. The questions were validated and reviewed. Once the questionnaires were ready with a format, they were delegated to field teams for conducting interviews. All agencies within the upazila coordinated with their partners or upazila lead agency for coordination.

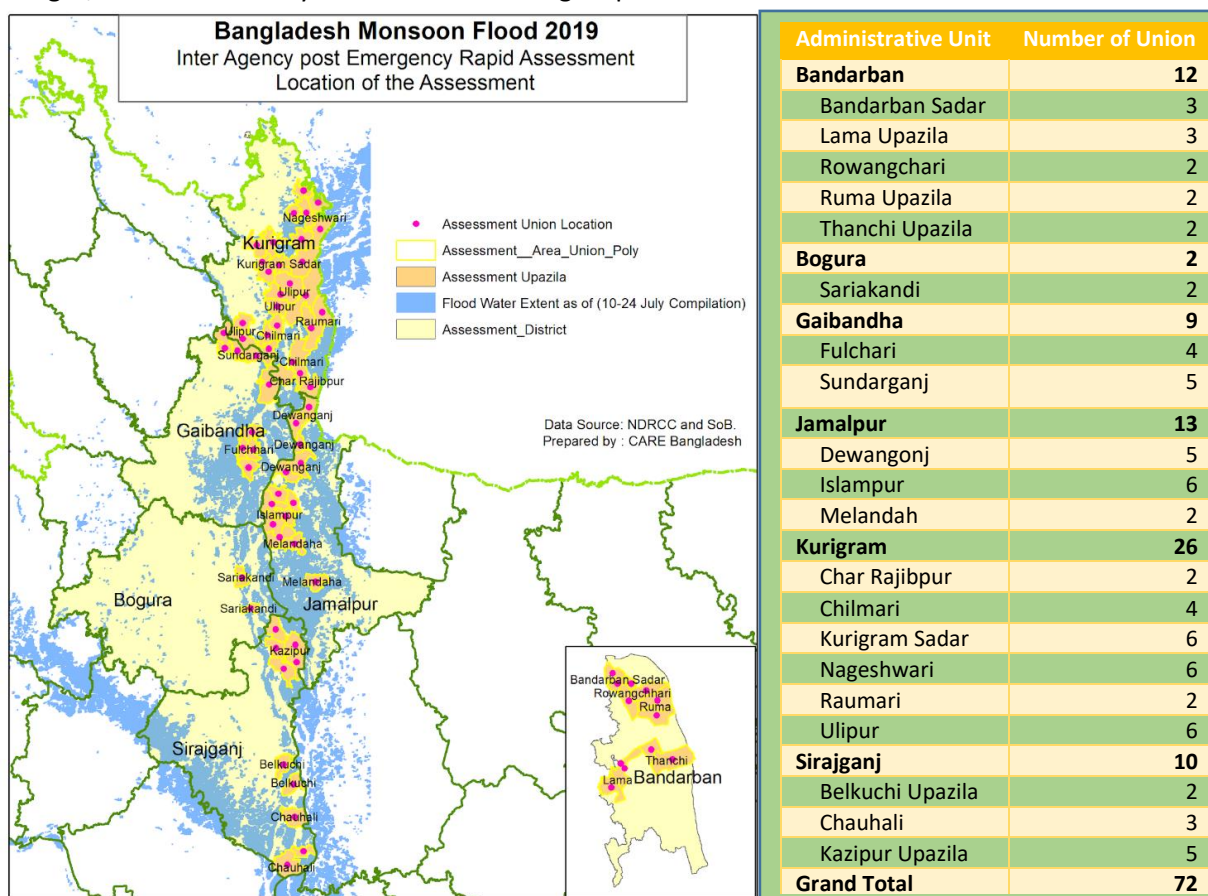
When the Partner NGOs and lead NGOs sent the data after collecting, cleaning and compiling, the data set was ready for analysis. A core analysis team worked at the national level to analyze the collected data and have come up with some suggestions, recommendation and way forward.

This report comes with some limitations as well. Due to time and resource constraint only 72 Unions were considered as assessment area out of 163. Within those 72 unions paper-based questionnaire were used for data collection, since not enough human resources were available who are trained to use digital platform. The questionnaire focused more on long term impact on community regarding damages of critical infrastructure. Psycho-social dynamics (e.g protection issues) were not under the scope of this study, since they were already covered in *Monsoon Flood JNA Phase One Light 2019* and *HCTT-HRP-Monsoon-Floods-August-2019-April-2020*.

1.3 Assessment Areas

Assessments were conducted in 6 districts (Bandarban, Bogura, Gaibandha, Jamalpur, Kurigram, Sirajganj) out of the 9 worst affected areas that were identified during the previous [Monsoon Flood JNA Phase One Light 2019](#). During the rapid response, 6 districts prevailed as the worst affected in which a total of 38 Upazilas were affected. Within the 38 Upazilas, 278 unions and 2924 wards/village were affected by the flood.

The unions selected for interviews are located in flood affected areas where flood water remained for the longest period of time (10-24 July). The 72 unions provide a comprehensive overview of 1810 villages/wards affected by the flood for the longest period of time



Map 1.1 : Location of the assessed union

Table 1.3 : Administrative units of total affected and assessment areas

District	Number of affected Upazila	Number of Affected Union	Number of Affected Village/ward	Number of assessment upazila	Number of Assessment Union	Total number of village/Ward in the union
Bandarban	7	32	170	5	12	518
Bogura	3	22	197	1	2	35
Gaibandha	7	51	424	2	9	81
Jamalpur	7	68	839	3	13	140
Kurigram	9	63	894	6	26	865
Sirajganj	5	42	400	3	10	171
Total	38	278	2924	20	72	1810

2.1 Demographic and Physiographic Characteristics of the affected community in the assessment areas

Affected Population:

Identifying the hazards of affected population given their vulnerabilities was one of the key objectives of this study. People from Char or Haor areas do not experience the same hazards compared to people from plain land and hilly areas. However, this monsoon flood affected different geolocations and its population in different ways. This flood was not only widespread but intense. Recurring heavy rainfall with incessant downpours and the rush of water from upstream till the end of July affected the country severely.

The vulnerability to flood varies based on people's socio-economic status, exposure to flood and capacity to adapt to the impacts of flooding. The poor and extreme poor, women, persons with disability, children and elderly are most vulnerable due to lack of access to assets and services caused by unequal socio-economic position. Local people employed in environmentally sensitive sectors such as agriculture, fishing, and forestry, households living in remote char having limited access to social services, access to safe drinking water and sanitary toilets are more vulnerable in flood.

Table 2.1 : Physiographic characteristics and affected population of the assessed union

Physiographic characteristics	Number of Union	Total number of village/Ward	Estimated number of population affected	Estimated number of Household affected
Char area	34	890	1180473	200196
Erosion Prone Area	5	77	76400	30123
Flood Plain	18	281	392742	122180
Hilly	15	562	94310	23890
Grand Total	72	1810	1743925	376389

Almost half the number of interviewed Unions are situated in Char areas. The monsoon flood inundated a huge portion of North-mid and Northern Bangladesh. Therefore, almost 50% of our assessed Unions are from char areas and the estimated population under those Union Parishads covers almost 70% of the affected population here.

Table 2.2 : District wise administrative units and affected population of the assessed union

District	Number of Union Assessed	Total number of village/ward	Number of Village/ward affected	Estimated number of population affected	Estimated number of household affected
Bandarban	12	518	302	58270	10108
Bogura	2	35	31	No Data	6982
Gaibandha	9	81	69	188191	58213
Jamalpur	13	140	129	425550	97370
Kurigram	26	865	716	1038338	165790
Sirajganj	10	171	138	33576	37926
Total	72	1810	1385	1743925	376389

In Bandarban district 12 unions were assessed in 5 affected upazilas under which 518 villages/wards and 58,270 people were affected. Similarly, in Bogura district 2 unions were surveyed in 1 upazila where a total of 6982 households in 35 villages/wards were affected. In Gaibandha district, 9 unions were surveyed in 2 flood affected upazilas within which 58213 households in 81 villages/wards were affected. 13 Unions in 3 flood affected Upazilas of Jamalpur district were surveyed in which a total of 97,370 households in 140 wards/villages were affected by the flood. In Kurigram district, 26 unions were surveyed in 6 flood affected upazilas where a total of 165790 households were affected in 865 wards/villages. Finally in Sirajganj district 10 unions in 3 flood affected upazilas were assessed within which 37926 households were affected in 171 wards/villages.

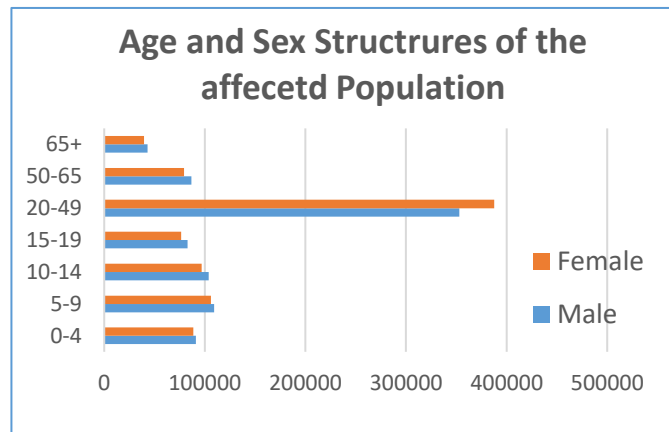
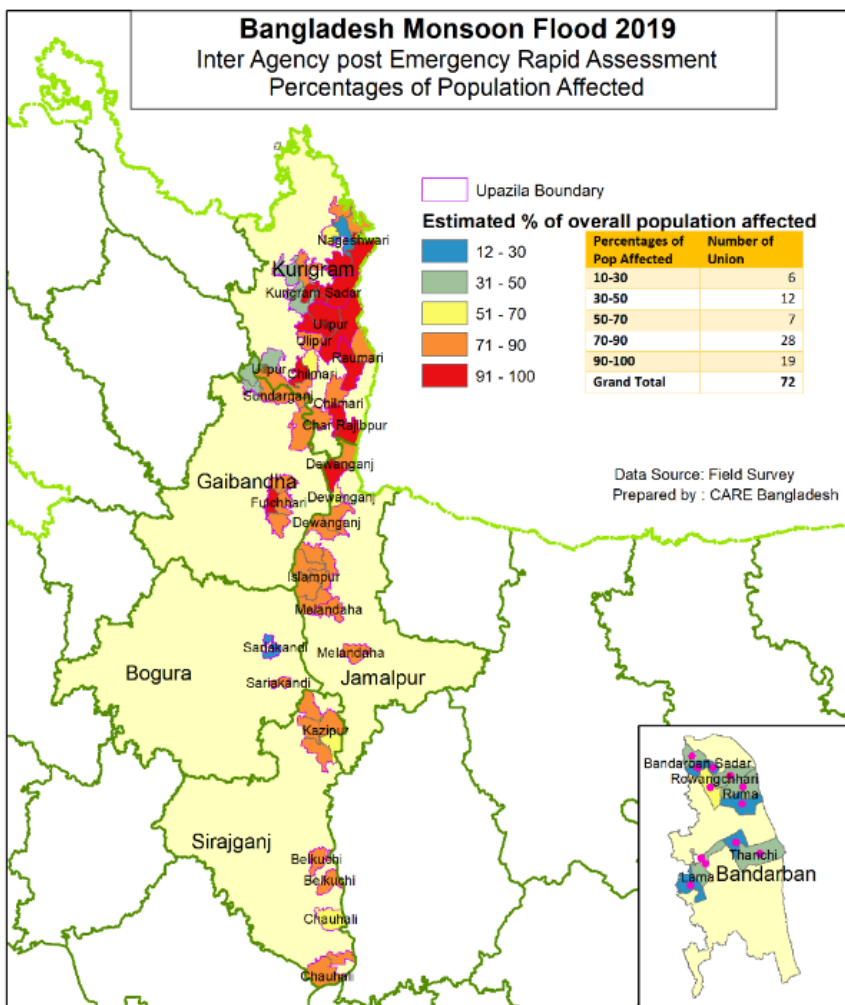


Figure 2.1: Age sex structure of the affected community in assessed Union



Map 2.1: Percentages of overall population affected

Within the surveyed areas:

- ❖ There are 19 union where more than 90% population were affected.
- ❖ 28 unions had 71-90% population affected by the flood. 91-100% people are affected in 19 unions, which makes the situation extremely vulnerable and necessitates external and long term support.
- ❖ 31-50% people were affected in 12 unions. 51-70% people were affected in 7 unions and finally 12-30% people were affected by the monsoon flood in 6 unions.

3. Sectoral damages of the monsoon flood 2019

Since in medium to long run the dimension of vulnerability changes, a sectoral ranking of damages was done to bring out the voice from the field. The summary of the worst affected sectors described accordingly and detailed table given as annex 1.

Rank of the Impact	Worst Affected Ranked first		Worst Affected Ranked second		Worst Affected Ranked third	
	Number of Union	% of Union	Number of Union	% of Union	Number of Union	% of Union
Livelihood	21	29.2	19	26.4	6	8.3
Community infrastructures	18	25	4	5.6	11	15.3
Shelter /housing	15	20.8	14	19.4	12	16.7
Food Security	14	19.4	17	23.6	11	15.3
WASH	2	2.8	12	16.7	13	18.1
Health	1	1.4	3	4.2	9	12.5
Protection	1	1.4	2	2.8	3	4.2
Agriculture				0	1	1.4
Education			1	1.38	5	6.9
Market price hike				0	1	1.4

Figure 3.1: Rank of the damages according to the sector

First Ranked Damage

- ❖ In almost 30% of the unions livelihood is ranked as first sector that was severely affected. The affected areas are highly agriculture dependent and monsoon floods not only affect the agriculture and poultry in the short run but also in the longer run. Farmers and seasonal laborers depend on income from harvest, which was damaged due to inundation of fields.
- ❖ Community Infrastructure are second worst damaged sector in 25% of the assessed districts. There were recurring damage for infrastructure like bridges, embankments, dams, schools and more. Some community infrastructures have been damaged since the flood of 2017, which resultantly made the infrastructures more vulnerable.
- ❖ Even after two months, shelter and housings are still one of the biggest priorities in 20% of the assessed unions. Given the high poverty rate and weak infrastructures of the houses in northern region, damages to houses have still not been recovered.

Second Ranked Damage

- ❖ In 26.4% of the assessed unions livelihoods has been significantly damaged, which is a common characteristic for recovery phase after any disaster.
- ❖ Community infrastructures are hardly a second- ranked damage (only in 4 unions), since in a lot of unions it already is a first ranked damaged
- ❖ Shelter/ housings are still second affected damages in about 20% of the assessed unions.

Third Ranked Damage

- ❖ Since livelihood already ranked as first ranked damaged, less unions (only 8%) are ranked as third ranked damages
- ❖ Community infrastructures are still highly damaged and ranked as third in 15% of the assessed unions

4. Damages to critical community infrastructure

The flood water receded in the first week of August 2019 after 15 days of flooding, leaving damaged infrastructure and destroyed agriculture. Most of the damaged infrastructure is very much related to the day to day life of the community. Damage to these critical infrastructure creates hardship to community accessibility and livelihood, thus requiring urgent repair and refurbishment for overall recovery of the affected community. Similar type of infrastructure damage happened in the nine most affected districts by monsoon flood 2019. Analysis and prioritization of those damaged infrastructures are done in the assessed 72 unions.

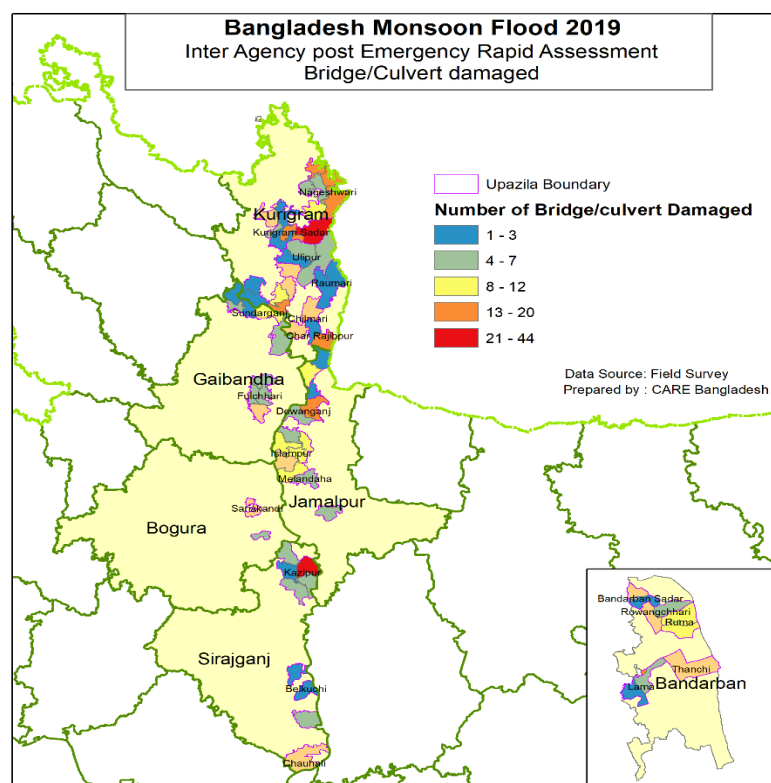
4.1 Damages of Bridges and Culvert

Table 4.1 : Damages of the bridge/culvert due to monsoon flood 2017 and 2019

District	Number of Union	Number of Bridge/culvert Damaged in 2019	Number of Bridge/culvert Damaged in 2017
Bandarban	12	50	9
Bogura	2	6	14
Gaibandha	9	40	31
Jalalpur	13	85	34
Kurigram	26	184	158
Sirajganj	10	67	33
Grand Total	72	432	279

The comparison between the damages of bridge/ culverts in 2019 next to the damages in 2017 shows a positive correlation over time:

- ❖ Within the 72 unions, a total of 432 community infrastructure (Bridges/culvert) were damaged during the 2019 monsoon flood in comparison to 279 in 2017 flood.
- ❖ Out of the 432 bridges/culverts 50 were in Bandarban, 6 in Bogura, 40 in Gaibandha, 85 in Jalalpur, 184 in Kurigram and 67 in Sirajganj district.
- ❖ Other than Bogura, almost all the districts show higher number of bridge/ culvert damages in 2019 than in 2017
- ❖ Bandarban district here is the most notable due to the number of damaged culvert increasing to 50 in 2019 compared to only 9 in 2017.



Map 4.1: Number of bridge and culvert damaged in assessed union in 2019

Table 4.2 : Top ten worst affected upazila in terms of bridge culvert damaged

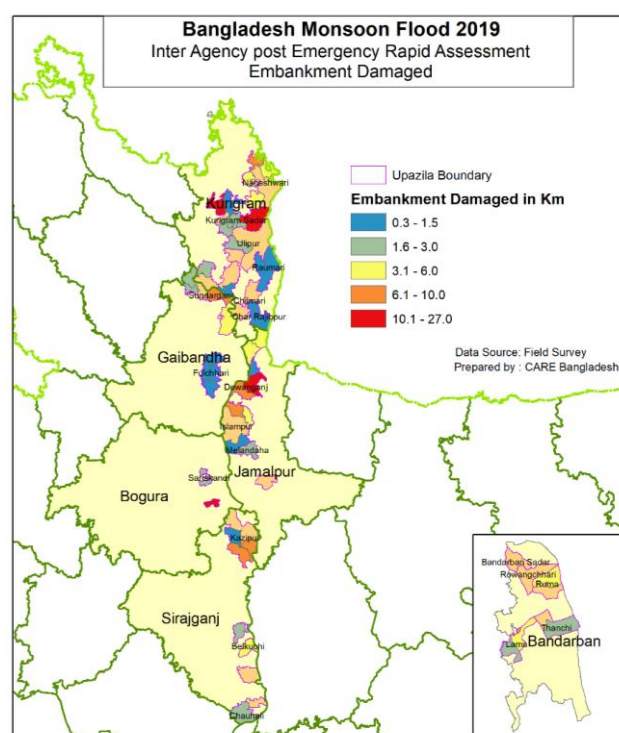
District Name	Upazila name	Number of Bridge/culvert Damaged (Only from assessed union)
Kurigram	Nageshwari	61
Sirajganj	Kazipur Upazila	60
Kurigram	Kurigram Sadar	59
Jamalpur	Islampur	47
Jamalpur	Dewangonj	30
Gaibandha	Sundarganj	26
Kurigram	Chilmari	23
Bandarban	Lama Upazila	22
Bandarban	Ruma Upazila	18
Kurigram	Char Rajibpur	18
Kurigram	Ulipur	18

4.2 Embankment Damaged

Damaged embankment due to flood in 2019 in comparison to 2017 also shows an increasing trend:

Among the 72 surveyed unions under the six districts, a total of 237.95 KMs of embankments were damaged compared to a total of 213.7 KM in 2017.

- ❖ Out of the 237.5 KM of embankment 23 KM were damaged in Bandarabn, 21 KM in Bogura, 21.25 KM in Gaibandha, 63 KM in Jamalpur, 82.7 Km in Kurigram and 27 Km in Sirajganj.
- ❖ In 2017 these numbers were respectively 8 KMs, 29 KMs, 23.7 KMs 32 KMs 95.5 KMs and 25.5 KMs.
- ❖ More embankments in Bandarban, Jamalpur and Sirajganj were damaged in 2019 whereas in 2017 flood, more embankments were damaged in in Bogura, Gaibandha and Kurigram districts.



Map 4.2: Embankment damaged in assessed union in 2019

Table 4.3 : Damages of the embankment due to monsoon flood 2017 and 2019

District	Number of Union	Number of Embankment damaged in 2019 in KM	Number of Embankment damaged in 2017 in KM
Bandarban	12	23	8
Bogura	2	21	29
Gaibandha	9	21.25	23.7
Jamalpur	13	63	32
Kurigram	26	82.7	95.5
Sirajganj	10	27	25.5
Grand Total	72	237.95	213.7

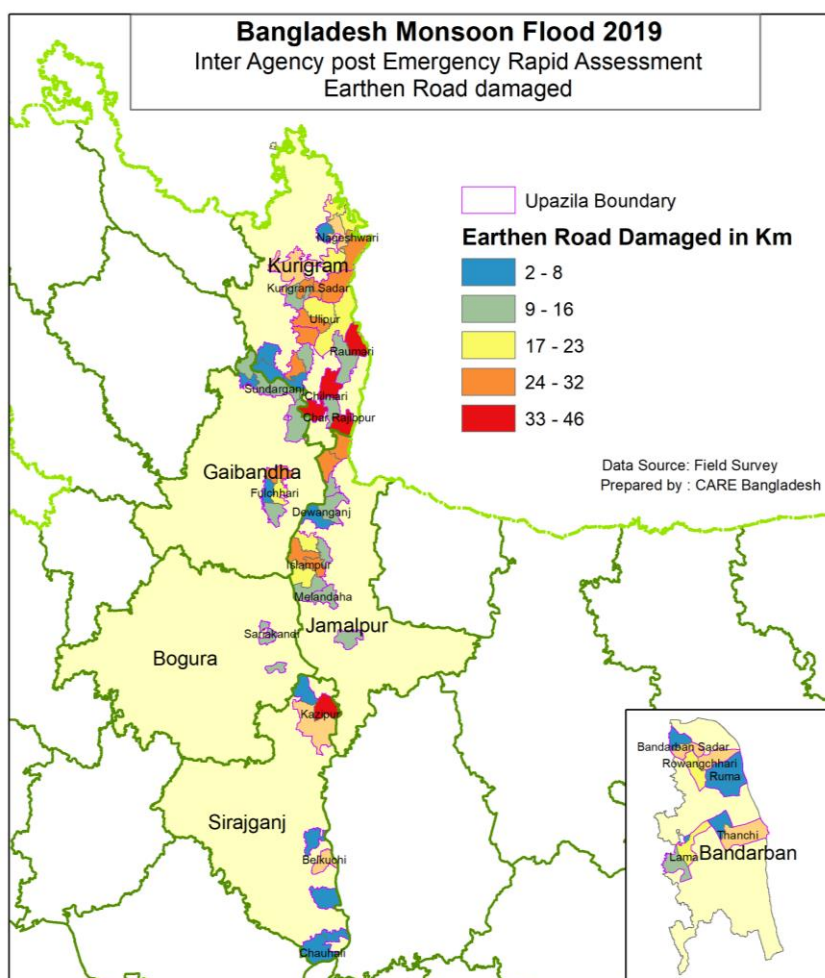
Table 4.4 : Top ten worst affected upazila in terms of damaged embankment in km

District Name	Upazila name	Embankment Damaged in 2019 in KM (Only from assessed union)
Kurigram	Kurigram Sadar	46.5
Jamalpur	Dewanganj	46
Kurigram	Nageshwari	24
Bogura	Sariakandi	21
Sirajganj	Kazipur Upazila	19
Gaibandha	Sundarganj	18
Bandarban	Lama Upazila	16
Jamalpur	Islampur	15
Kurigram	Ulipur	6.5
Sirajganj	Belkuchi Upazila	6

4.3 Roads and Communications

Damaged roads and communication due to flood in 2019 in comparison to 2017 in terms of three different types of roads a) earthen road, b) Herring Bond road and c) Pucca road:

- ❖ In 2019, a total of 981 KM of earthen road, 135.8 KM of Herring Bond road and 251.5 KM of Pucca road were damaged in the 72 surveyed unions under the six affected districts.
- ❖ In comparison, 750 KM of earthen road, 70.6 KM of Herring Bond road and 106 KM of Pucca road were damaged in 2017 in the surveyed areas.
- ❖ The flood in 2019 has caused more impact in the communication sector in comparison to the flood in 2017. Overall all the districts under the assessment endured more damage in the communication sector in 2019 compared to 2017.



Map 4.3: Length of damaged road in assessed union in 2019

Table 4.5 : Damages of roads due to flood 2017 and 2019 in assessed union

District	Number of Union	damaged Earthen roads_KM	Damaged Herring bond road_KM	Damaged_Pucca road_km	damaged Earthen roads_KM-2017	Damaged Herring bond road_KM-2017	Damaged_Pucca road_km - 2017
Bandarban	12	78	27.3	16.5	38	7.1	3
Bogura	2	26	9	2	33	13	1
Gaibandha	9	125	11	44	111	6.5	7.5
Jamalpur	13	244	42.5	119.5	169	27	29.5
Kurigram	26	449	38	59	341	14	49
Sirajganj	10	59	8	10.5	58	3	16
Total	72	981	135.8	251.5	750	70.6	106

Since the unions assessed are char areas mostly and underdeveloped in terms of infrastructure, earthen roads are key means of communication, therefore recovery phase assessment is crucial. The upazilas the districts are ranked from 1-10 in terms of damaged earthen roads in KM.

Table 4.6 : Top ten worst affected upazila in terms of damaged earthen road in km

District Name	Upazila name	Earthen road Damaged in 2019 in KM (Only from assessed union)
Jamalpur	Islampur	122
Jamalpur	Dewangonj	97
Kurigram	Nageshwari	93
Kurigram	Ulipur	92
Kurigram	Chilmari	88
Kurigram	Kurigram Sadar	66
Gaibandha	Fulchari	65
Kurigram	Raumari	60
Gaibandha	Sundarganj	60
Kurigram	Char Rajibpur	50
Sirajganj	Kazipur Upazila	44

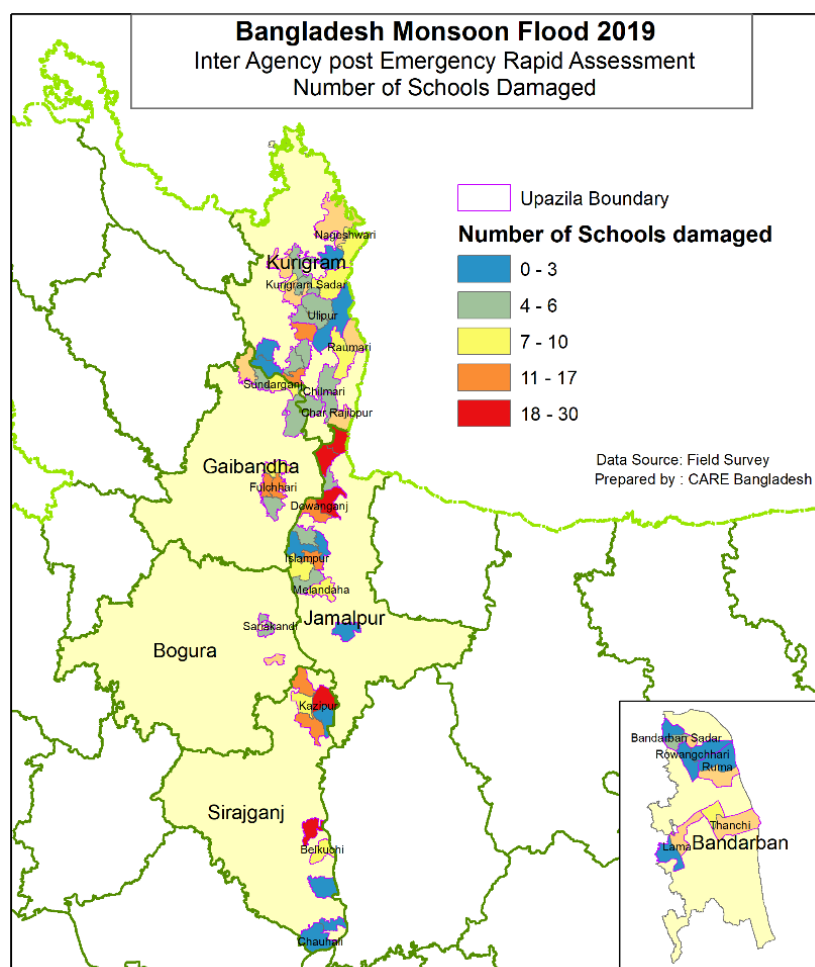
4.4 Damaged Schools and Educational Institute

Table 4.7 : Damages of schools and educational institute due to flood 2017 and 2019 in assessed union

District Name	Number of Union	Damaged Schools or other education institutions number in 2019	Damaged Schools or other education in 2017
Bandarban	12	20	7
Bogura	2	4	16
Gaibandha	9	62	32
Jalalpur	13	150	76
Kurigram	26	96	117
Sirajganj	10	95	71
Grand Total	72	427	319

The number of educational institutions in the 72 surveyed unions under six different districts damaged during the flood in 2019 and 2017

- ❖ A total of 427 educational institutions were damaged in 2019 in comparison with 319 in 2017. In 2019, 20 educational institutions were damaged in Bandarban, 4 in Bogura, 62 in Gaibanda, 150 in Jamalpur, 96 in Kurigram and 95 in Sirajganj whereas the numbers for 2017 were respectively 7, 16, 32, 76, 117 and 71.
- ❖ The flood in 2019 caused more damage to educational institutions compared to the flood in 2017. All the districts except Bogura and Kurigram had less damaged educational institutions where as Bogura and Kurigram had more.
- ❖ Education institutions are crucial for recovery phase and the longer education is disrupted, the risks ranging from child marriage to long term poverty and overall dropout rates heightens. The top 10 affected unions in terms of damaged schools are in the table below.



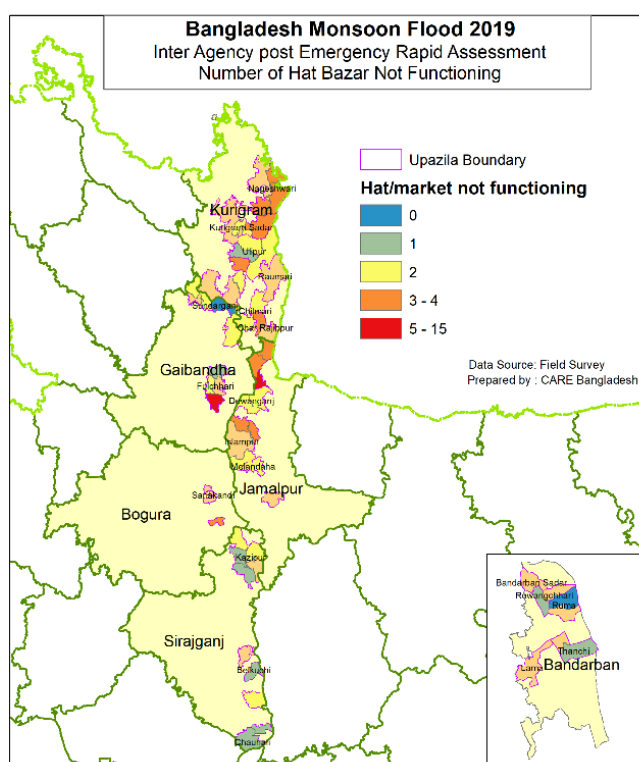
Map 4.4: Number of school and educational institute damaged in assessed union in 2019

Table: 4.8 Top ten worst affected upazila in terms of damaged schools and educational institutes

District Name	Upazila Name	Number of Schools or other education institutions damaged (only in assessed union)
Jamalpur	Dewangonj	101
Sirajganj	Kazipur Upazila	59
Gaibandha	Fulchari	44
Jamalpur	Islampur	36
Sirajganj	Belkuchi Upazila	28
Kurigram	Kurigram Sadar	28
Kurigram	Chilmari	27
Kurigram	Ulipur	21
Gaibandha	Sundarganj	18
Jamalpur	Melandah	13

4.5 Hat bazar/local market damaged

- ❖ A total of 110 markets were found non-functioning in 2019 in comparison to 133 non-functioning market in 2017.
- ❖ Among the 110 non-functioning markets 2 were in Bandarban, 4 in Bogura, 24 in Gaibandha, 25 in Jamalpur, 44 in Kurigram and 11 in Sirajganj whereas in 2017 these numbers were respectively 1, 9, 22, 51, 35 and 14.5
- ❖ There were more non-functioning market in 2017 compared to 2019 flood. The numbers in each of the districts are almost similar in both the floods except in Jamalpur where in 2019, 25 markets were found non-functioning compared to 51 in 2017.



Map 4.5: Number of Hat Bazar/market not functioning

Table 4.9 : Number of Hat Bazar/market not functioning

District name	Number of Union	Hat/market not functioning Number in 2019	Hat/market damaged in 2017-
Bandarban	12	2	1
Bogura	2	4	9
Gaibandha	9	24	22
Jamalpur	13	25	51
Kurigram	26	44	35
Sirajganj	10	11	14.5
Grand Total	72	110	133

4.6 Religious Structures damaged

Table 4.10 : Number of religious structure damaged

District name	Number of Union	Damaged_ Religious buildings Number 2019	Damaged_ Religious buildings Number in 2017
Bandarban	12	9	2
Bogura	2	11	7
Gaibandha	9	53	51
Jamalpur	13	219	48
Kurigram	26	165	158
Sirajganj	10	59	41
Grand Total	72	516	307

- ❖ In total 516 religious buildings were damaged due to flooding in 2019 whereas 307 religious buildings were damaged due to the flood in 2017.
- ❖ Out of the 516 religious buildings which were damaged in 2019, 9 were in Bandarban, 11 in Bogura, 53 in Gaibandha, 219 in Jamalpur, 165 in Kurigram and 59 in Sirajganj where as in 2017 these numbers were respectively 2, 7, 51, 48, 158 and 41
- ❖ More religious buildings were damaged by flood in 2019 than in 2017. All the districts had more damaged religious buildings in 2019 compared to 2017.

4.7 Health Infrastructures Damaged

Table 4.10 : Number of Health facilities infrastructure damaged

District name	Number of Union	Damaged_ Health Facilities_ Number	Damaged_ Health Facilities_ Number in 2017
Bandarban	12	4	
Bogura	2	2	2
Gaibandha	9	9	3
Jamalpur	13	25	9
Kurigram	26	20	18
Sirajganj	10	9	8
Grand Total	72	69	40

- ❖ In total 69 health facilities were damaged in 2019 whereas in 2017, 40 health facilities were damaged.
- ❖ Out of the 69 health facilities which were damaged in 2019, 4 were in Bandarban, 2 in Bogura, 9 in Gaibandha, 25 in Jamalpur, 20 in Kurigram and 9 in Sirajganj where as in 2017 these numbers were respectively 0, 2, 3, 9, 18 and 8.
- ❖ More health facilities were damaged in 2019 flood compared to the flood in 2017. All the districts had more damaged health facilities in 2019 compared to 2017.

5. Maintenance and repair and impact on the damaged community infrastructures of monsoon flood 2017

Monsoon flood 2017 had a devastating impact on community infrastructures which had long term toll on the development of people's socio-economic condition. Thus the assessment findings shows that there are no unions where the damaged infrastructure of 2017 were repaired fully.

Table 5.1 : Status of the repairmen of the damaged infrastructures by monsoon flood 2017

Damage infrastructure repaired (2017)	Number of Union
Not at all	7
Some portion repaired	57
Not Damaged by 2017	8
Grand Total	72

Out of 72 assessed union:

- ❖ Infrastructures were not repaired in 7 unions,
- ❖ Some infrastructures were repaired in 57 unions and
- ❖ No infrastructures were further damaged in 8 unions affected by the flood in 2017

Table 5.2: Status of Impact severity due to damaged infrastructures by monsoon flood 2017

Status of the monsoon flood 2019 impact due to not repairing damaged infrastructure of monsoon flood 2017	Number of Union
No	8
Yes	53
Not Answered	11
Grand Total	72

- ❖ In six districts impacts were severe than normal in 2019 due to not repairing of community infrastructure timely.
- ❖ However, 53 unions endured more impact due to flooding in 2019 where the infrastructures were not repaired after the flood in 2017.

Table 5.3: authority of or sources of fund for repairmen of damaged infrastructures

Infrastructures repaired by various agencies after 2017 flood	% of union
Government Regular project(Through respective agency)	50.5
Government Recovery project (Through DDM, MoDMR)	20.8
Non-Government Organization	28.7

- ❖ 50.5% of the repaired infrastructure in the assessed unions was repaired through regular government projects by respective agencies after the flooding in 2017.
- ❖ 20.8% damaged infrastructures were repaired by Ministry of Disaster Management and Relief and 28.7 % were repaired by various NGOs.

Government is the main stakeholders to repair the damaged infrastructures. Though in most case only few areas were repaired, but those repairing work was mostly completed by the Government regular projects whereas in some cases the repair was managed by government and non-government recovery project.

6. Assistance, unmet needs and current Priorities

With the flood prevailing over one fourth areas of the country in last July, Government and Non-Government humanitarian agencies supported the affected community immediately after the flood to meet the emergency needs. The rapid emergency response was effective for the affected community to survive for the time being but the long lasting damages caused by this flood has left the community in a critical situation with persisting needs and priorities for recovery. This assessment explores few aspects of the assistance and current priorities.

6.1 Rapid Emergency Response

Table 6.1: Status of emergency support		
Received Support after 2019		Number of Union
No		4
Yes		68
Total		72

- ❖ Out of the assessed 72 unions 4 unions received no support from any agency in 2019, 68 unions received support from various government and non-government humanitarian agencies.
- ❖ Most of the unions received support from both government and non-Government agencies. Affected community from 68 unions received government support through Gratuitous Relief (GR) Cash and Gratuitous Relief (GR) rice.
- ❖ 52 unions received support from both government and non-government (NGO/UN/BDRCS) agencies.
- ❖ 7 unions additionally got support from local CBOs and nearby villages and various religious groups.

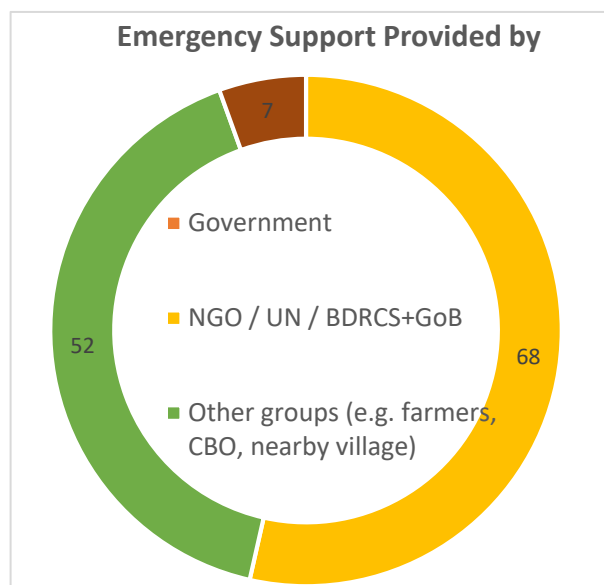


Figure 6.1: Emergency support providing agencies

6.2 Type of supports/assurances during rapid emergency response of flood 2019

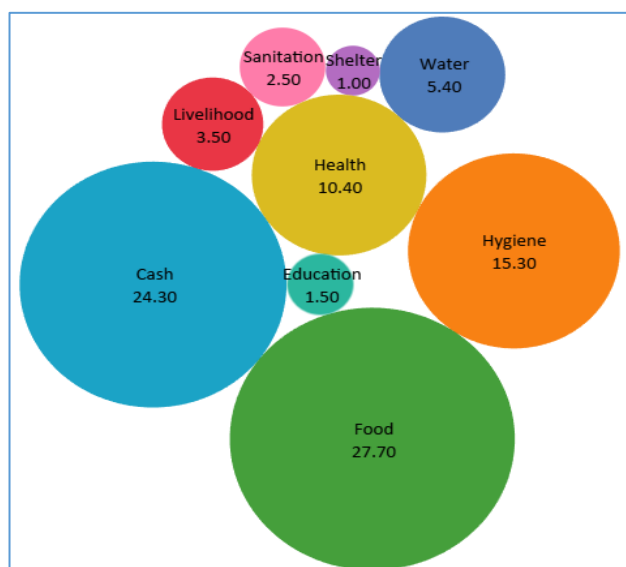


Figure 6.2: Sector specific emergency rapid response

- ❖ Most of the rapid emergency response were focused on food, cash, hygiene and primary health care.
- ❖ Food (27.7%) was the most common type of support, followed by cash (24.3%) and Hygiene (15.3%).
- ❖ The other types of support were health, water, livelihood, sanitation education and shelter.

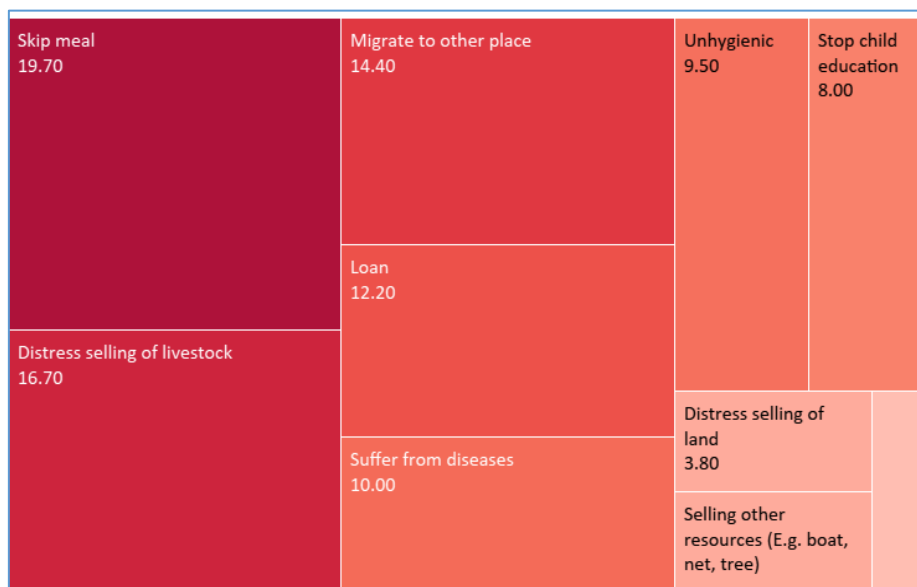
6.3 Effectiveness of rapid emergency response

Table 6.2: Met Emergency Needs	No. of Unions	% of Unions
Met needs of very limited person	35	48.61%
Partially met the emergency	32	44.44%
Not Answered	4	5.56%
Not at all	1	1.39%
Grand Total	72	100.00%

- ❖ The assistance provided to the flood affected people in the 68 unions met needs to some extent.
- ❖ The assessment shows that in only 1 union the assistance “Not at all” met the needs.
- ❖ In 35 unions (48.61%), the assistance provided by different agencies met needs of only a limited number of people.
- ❖ In 32 unions (44.44%) the assistance provided partially met the emergency needs of the affected people.
- ❖ No relevant information was gathered from 4 unions.

6.4 Negative Coping Mechanism

Since the response was not enough to meet the emergency needs of the monsoon flood 2019 and the affected areas are mostly socio economically vulnerable, various negative coping mechanisms were adopted by community to survive this flood impact. This may have impacted the overall socio economic growth of these areas in long term.



negative coping mechanism was skipping meals, distress selling of livestock, in country migration, taking loan and not treating health issues.

- ❖ Though the present ratio of the discontinuation of child education is less but the long term effect of the flood may result in dropout of children from education.
- ❖ 5 unions reported early marriage due to flood impact and communities from 10 unions sold their land and other assets such as boat, tree, livestock, net etc.

❖ Communities from 61 unions practiced negative coping mechanism to maintain their household needs and livelihood.

❖ The assessment found that on an average communities from this 61 unions have adopted at least two or more negative coping mechanism.

❖ The highest

6.5 Current priorities and needs

Though the flood affected the community in July 2019, the impact is still hampering the regular lives and livelihoods of the communities because of the level of damage caused to agriculture and critical community infrastructures. On the basis of [JNA phase one light assessment of the monsoon flood 2019](#), the humanitarian community planned to pursue a 2-phase approach during a nine-month period: Immediate Humanitarian Assistance from August to November 2019 and, a Recovery phase from December 2019 to April 2020².

Thus the continuing needs identified and current priorities of the community are ranked according to the sector. Number and percentage of unions identified by sectoral priorities are ranked 1st to 3rd

2 HCTT-HRP-Monsoon-Floods-August-2019-April-2020; Available @ <https://www.humanitarianresponse.info/en/operations/bangladesh/document/hctt-hrp-monsoon-floods-august-2019-april-2020final>

Table 6.3: Rank of the Current Priorities and Needs from the surveyed union

Priority needs	1st Priority		2nd Priority		3rd Priority	
	Number of Union	% of Union	Number of Union	% of Union	Number of Union	% of Union
Repair of road	17	23.61%	8	11.11%	3	2.78%
Restoration of livelihood activities	15	20.83%	4	5.56%	6	8.33%
Repairing damaged house	12	16.67%	8	11.11%	5	6.94%
Food (for people)	8	11.11%	7	9.72%	3	4.17%
Safe drinking water	7	9.72%	9	12.50%	5	6.94%
Sanitation/toilet facilities	4	5.56%	6	8.33%	16	22.22%
Repair of Tube well	2	2.78%	3	4.17%	9	12.50%
Sanitation bathing space/water	2	2.78%	3	4.17%	4	5.56%
Repair of Embankment	1	1.39%	1	1.39%	3	4.17%
Repair of Latrine	1	1.39%	6	8.33%	3	4.17%
Seedling for upcoming crop	1	1.39%	4	5.56%	4	5.56%
Transport and access to markets	1	1.39%	2	2.78%	1	1.39%
Repair of Schools	1	1.39%	1	1.39%		
Repair of Bridge and culvert			7	9.72%	2	2.78%
Safety and security			1	1.39%	3	4.17%
Access to markets to sell			1	1.39%		
Other (specify)			1	1.39%	1	1.39%
Children returning to school					1	1.39%
Feed for livestock					1	1.39%
Health and hygiene materials/commodities (incl. menstrual hygiene materials)					2	2.78%

Key aspects of the current priorities

- ❖ Repairing road, restoration of livelihood, shelter support, food for people and safe drinking water are the major areas ranked 1st as priorities of the assessed union.
- ❖ The second priority of the current needs also shows the similar sectors for larger portion of the union except restoration of livelihood. Highest number of union revealed safe drinking water as 2nd priority as tube well damage was severe in this flood³.
- ❖ In third priority the majority of the unions mentioned sanitation and toilet facilities repair. The other sectoral priority came forward as average of more or less five union. Additionally seedlings for next cropping season were also highlighted which reflects that damage to standing crops may be an issues in next rice-yielding season.

³ Monsoon Flood JNA Phase One Light; available @ <https://www.humanitarianresponse.info/en/operations/bangladesh/document/20190731monsoon-flood-jna-phase-one-light-2019final>

Summary of current priority needs

The top 3 ranked current priorities are summarized for identifying and ranking the overall current priority needs of the flood affected community.

- ❖ **Repair of the road** is the first priority needs of the affected community, as out of 72 union 12.92% of the union marked repair of the roads as priority.
- ❖ **Livelihood and shelter** fall under rank two as the same number of union choose these two as their priority needs.
- ❖ **Wash infrastructure repair and maintenances** are the third priorities of the affected union.
- ❖ **Foods, seeds as agricultural inputs, and repair of bridge culvert** marked as consequentially 4th, 5th and 6th priority of the affected community.

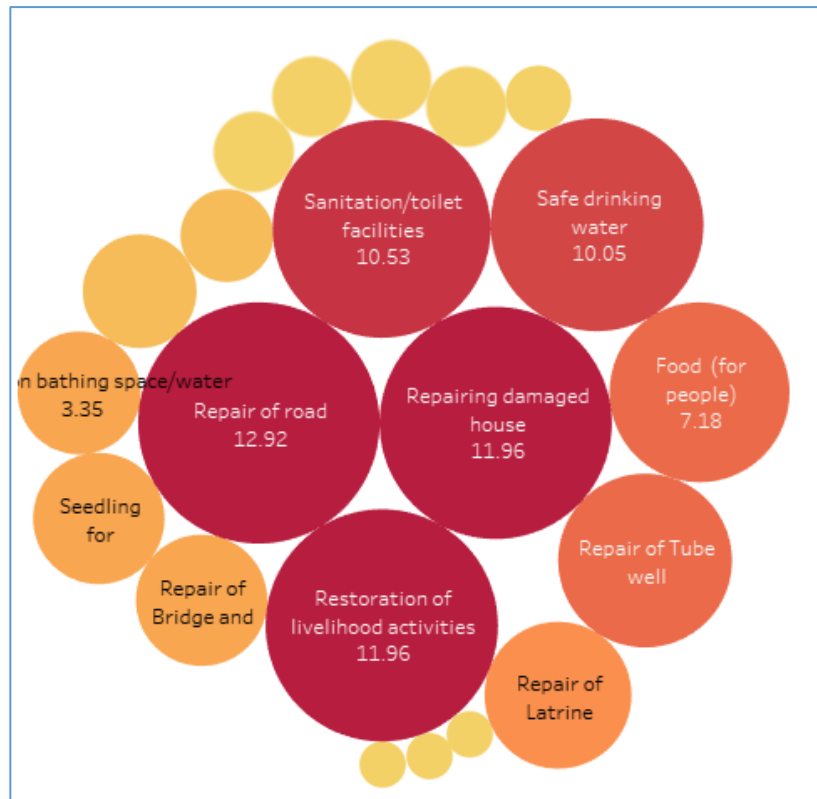


Figure 6.4: Rank of the priority needs of the affected community

The repair of damaged schools, transport and access to markets, children returning to school, health and hygiene materials/commodities, SRHE, feed for livestock, safety and security also ranked under priority needs of the affected community for a number of union (on an average 5/6 union) in the assessed unions.

6.6 Preferred Intervention Modalities

To meet the current priority needs, community preference regarding the implementation modalities of the activities for recovery activities were assessed.



Figure 6.5: Preference of the implementation modalities

- ❖ The highest portion of the unions preferred cash for work (CfW) for repairing of community infrastructures. Direct cash support for the affected community and long term development activities are listed as third and fourth preference as a whole.
- ❖ Direct agricultural input ranked as 4th preference of the implementation modality.
- ❖ A remarkable number of unions also prefer construction of permanent community infrastructures.

7. Response Gap

The [humanitarian response plan \(HRP\) of the monsoon flood 2019](#) of the Humanitarian Coordination Task Team (HCTT) elaborated the sectoral requirement for the flood response with goal to

- Provide life-saving assistance to those in life- threatening situations
- Restore the safety and dignity of the most vulnerable populations
- Rebuild livelihood and to facilitate the recovery process

According to the HRP the total required fund for the two phase (Response and Recovery) flood response is 27 million USD. Needs Assessment working Group (NAWG) and UNRC office jointly tracking the response funding through [HCTT 4W](#). As of 15 September, 2019 a total 9.22 million worth of support have been provided by several humanitarian agencies.

According to the agency report of HCTT 4W district wise allocation of fund and affected community, there is discrepancy in terms of the ratio of response and the number of affected community.

- ❖ Jamalpur has the highest number of the affected community while Kurigram has received the highest amount of fund.
- ❖ Sunamganj, Sylhet, Bogura and Tangail district received very minimum amount of support in comparison to the ratio of the affected community. Specially the discrepancy of affected population and response amount ratio in Bogura and Tangail districts are very high.

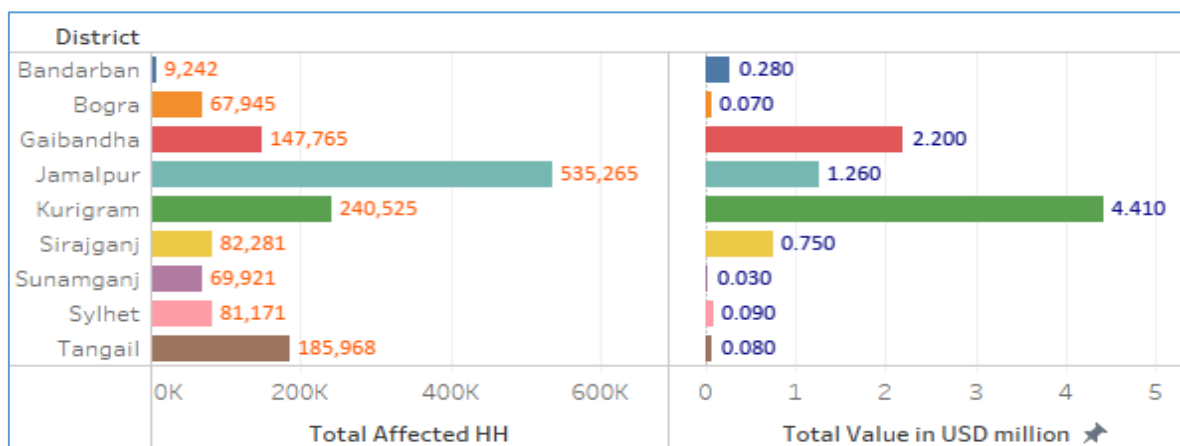


Figure 7.1: Number of Population Affected and Amount of Response in USD

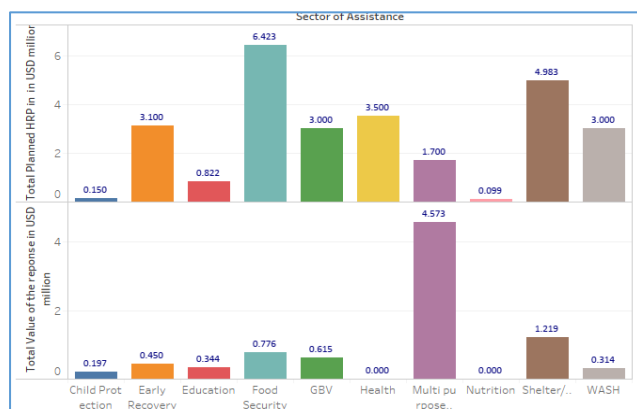


Figure 7.2: Sectoral Planned and Response Amount

❖ The 4W reported sectoral response amount covered both the rapid responses and resources disbursed or planned before the HRP (Start Fund Bangladesh funded interventions).

❖ Except Multipurpose Cash Grant (MPCG) all other sectors remain underfunded in comparison to required response amount.

8. Key Findings and Recommendations

Assessment findings supported by concluded evidence suggest that 2017 floods significantly damaged community infrastructure which were not properly repaired during the last two years. The damage of infrastructure by 2019 flooding has further exacerbated the vulnerability of affected areas, although, after 2017, numbers of initiatives were taken by government of Bangladesh and different agencies. Hence, the infrastructures in the surveyed unions shows that six districts were impacted more in 2019 than usual flooding due to under/ no repairing of the 2017 flood damaged infrastructure. Survey resulted that 53 unions endured more impact due to flooding in 2019 where the infrastructures were not repaired after the flood in 2017. However, the assessment shows that in 35 unions (48.61%), the assistance provided by different agencies met needs of only a limited number of people. Moreover, in 32 unions (44.44%) the assistance provided partially met the emergency need of the affected people. Under the given circumstances, due to unmet needs, various negative coping mechanisms were adopted by the flood affected people in 2019, e.g. skipping meals, distress selling, migration to other areas, taking loan from local sources.

Assessment results revealed following recommendations to humanitarian actors-

- ❖ Cash assistance for livelihood resumption to avoid negative coping strategy targeting the most affected livelihoods is recommended.
- ❖ Cash for work is recommended by community to repair and refurbish essential community infrastructure such as earthen road, fully damaged and partially damaged embankments. If these are not addressed in a timely manner, flooding, landslide and river bank erosion may lead to longer term impact on the livelihoods and environment like the undoing of 2017 flood.
- ❖ Majority markets were found to be fully-functional and this indicates that cash-based support would be useful to boost local economy and livelihoods.
- ❖ Considering the vulnerability and exposure of the area to flood, landslide and river bank erosion, long term development is recommended by affected community.
- ❖ One of the priority assistances should be in the form of establishing improved WASH facilities such as provision of safe drinking water and toilet facilities.
- ❖ Repair of damage houses through cash or in-kind material support appears to be a suitable response modality considering the resource mobilization.
- ❖ Food security support could be managed in the form of the livelihoods support and cash for work support in the affected areas.
- ❖ There is remarkable difference between the ratio of population affected and response amount at district level. Thus response amount allocation should be more evidence based.
- ❖ Sectoral HRP planned amount and actual response amount of shelter, early recovery, health, wash, nutrition and food security sectors are remarkably low than planned. Further response should prioritize the HRP allocated sectoral priority.
- ❖ Advocacy with government agencies for expanding their recovery support to the affected areas. The fragile infrastructure should be repaired for reducing impact of affected area.
- ❖ It is noted that the ongoing assessment has not been able to frame the role of micro finance institution in the affected area, but the general scenarios shows that stopping or postponing the installment payment of micro credits can be an aid for the community. Humanitarian community should raise awareness and advocates at policy level for this issues.
- ❖ Previous disaster impact and vulnerability focused recovery/ development program should be prioritize by policy maker.

Data Sources and References:

- *Field survey (Key informants: UP chairman, ward Commissioner, UP secretary....).*
- *National Disaster Response and Coordination Centre, Ministry of Disaster management and Relief, Government of Bangladesh.*
- *Housing and Population Census 2011, Bangladesh Bureau of Statistics*
- *Poverty Estimate; The World Bank (WB) and Bangladesh Bureau of Statistics (BBS) in collaboration with World Food Programme (WFP) produced the poverty estimates.*
- *Undernutrition estimation; Bangladesh Bureau of Statistics (BBS) in collaboration with World Food Programme (WFP) & the International Fund for Agricultural Development (IFAD)*
- *NASA, NRT flood Monitoring, MODIS product*

Glossary and Acronyms

- ❖ GoB- Government of Bangladesh
- ❖ MoDMR- Ministry of Disaster Management and Relief
- ❖ DDM- Department of Disaster Management
- ❖ NDRCC- National Disaster Response Coordination Cell
- ❖ DAE- Department of Agricultural Extension
- ❖ FFWC- Flood Forecasting Warning Centre
- ❖ DLS- Department of Livestock, Government of Bangladesh
- ❖ UNRCO- United Nations Resident Coordinator Office
- ❖ HCTT- Humanitarian Coordination Task Team
- ❖ NAWG- Needs Assessment Working Group

Assessment timeline

Activity	Start Date	End date
Questionnaire Preparation and finalization	11 September 2019	14 September 2019
Assessment Area Finalization	15 September 2019	15 September 2019
Data Collection from Field	16 September 2019	19 September 2019
Data Entry	20 September	22 September
Data Cleaning and compilation	22 September 2019	22 September 2019
Data Analysis	23 September	24 September 2019
Draft Report Preparation	24 September 2019	26 September 2019
Report Review by Core analysis member	27 September 2019	28 September 2019
Feedback and review by participating organization	29 September 2019	30 September 2019
Final Report Published	30 September 2019	

Annex 1.a: Detail table of the Severity of the sectoral damages (Table-1)

District Name	Severity Ranking -1 (Union Name)
Bandarban	Food Security (Boli Para, Lama Sadar, Rowangchari Sadar, Ruma Sadar, Taracha, Thanchi Sadar)
	Livelihood (Bandarban Sadar Union, Fashiakhali, Kuhalong, Lama Paurashava, Paindu)
	Shelter /housing (Bandarban Paurashava)
Bogura	Shelter /housing (CHANDOBAISHA, Sariakandi Sadar union)
Gaibandha	Community infrastructures (Belka)
	Food Security (Kanchipara, Udakahli, Uria)
	Livelihood (Haripur, Sundarganj Paurashava, Tarapur)
	Shelter /housing (Gazaria, Kapasia)
Jamalpur	Community infrastructures (Bahadurbad, Char Aam Khawa, Chikajani, Hatibhanga)
	Food Security (Dangdhora, Kulkandi,Mahmudpur, Noapara, Pathorshi)
	Livelihood (Belgacha, Chinadulli, Ghosherpara, Sapdhari)
Kurigram	Community infrastructures (Berubari, Char Rajibpur, Danthvanga, Kachakata, Kodalkati)
	Food Security (Kurigram Paurashava)
	Livelihood (Bazra, Begumganj, Bhogdanga, Holokhana, Jatrapur, Panchgachi, Ramna, Raniganj Thanahat)
	Protection (Narayanpur)
	Road repair (Astomer Char, Buraburi, Shaheber Alga)
	Shelter /housing (Ballabher Khas, Bandebar, Gunaigachh, Hatia, Mogolbasha)
	WASH (Kedar, Noonkhawa)
Sirajganj	Community infrastructures (Tekani)
	Food Security (Khashpukuria, Sthall)
	Health (Umarpur)
	Shelter /housing (Bara Dhul, Char Girish, Naturpara, Nishchintopur, Rajapur, Kiash rajbari)

Annex 1.b: Detail table of the Severity of the sectoral damages (Table-2)

District Name	Severity Ranking -2 (Union Name)
Bandarban	Food Security (Bandarban Paurashava, Bandarban Sadar Union, Fashiakhali, Kuhalong, Lama Paurashava, Paindu)
	Health (Thanchi Sadar)
	Livelihood (Boli Para, Lama Sadar, Rowangchari Sadar, Ruma Sadar, Taracha, Bogura)
	Protection (Sariakandi Sadar union)
	WASH (CHANDOBAISHA)
Gaibandha	Food Security (Belka, Tarapur)
	Food Security (No affected)
	Livelihood (Gazaria, Kanchipara, Kapasia, Udakahli, Uria)
	Shelter /housing (Haripur)
	WASH (Sundarganj Paurashava)
Jamalpur	Accessibility (Sapdhari)
	Community infrastructures (Chinadulli)
	Food Security (Ghosherpara)
	Livelihood (Kulkandi, Mahmudpur, Pathorshi)
	Protection (Dangdhora)

	Shelter /housing (Belgacha, Char Aam Khawa)
	WASH (Bahadurbad, Chikajani, Hatibhanga, Noapara)
Kurigram	Community infrastructures (Bandebar)
	Education (Bhogdanga)
	Food Security (Begumganj, Buraburi, Gunaigachh, Hatia, Panchgachi, Raniganj)
	Health (Danthvanga, Thanahat)
	Livelihood (Kurigram Paurashava, Mogolbasha, Narayanpur, Noonkhawa)
	Shelter /housing (Astomer Char, Bazra, Holokhana, Jatrapur, Kedar, Ramna, Shaheber Alga)
	WASH (Ballabher Khas, Berubari Char, Rajibpur, Kachakata, Kodalkati)
Sirajganj	Community infrastructures (Bara Dhul)
	Food Security (Char Girish, Umarpur)
	Livelihood (Khashpukuria, Nishchintopur, Shelter /housing, Kiash rajbari, Rajapur, Sthall, Tekani)
	WASH (Naturpara)

Annex 1.c: Detail table of the Severity of the sectoral damages (Table-3)

District Name	Severity Ranking -3 (Union Name)
Bandarban	Community infrastructures (Lama Paurashava, Lama Sadar)
	Health (Boli Para, Fashiakhali)
	Livelihood (Bandarban Paurashava)
	Market price hike (Ruma Sadar)
	Road (Paindu, Rowangchari Sadar)
	Shelter /housing (Bandarban Sadar Union, Taracha)
	WASH (Kuhalong, Thanchi Sadar)
Bogura	Accessibility (CHANDOBAISHA)
	WASH (Sariakandi Sadar union)
Gaibandha	Community infrastructures (Haripur)
	Education (Kanchipara, Udakahli, Uria)
	Food Security (Gazaria, Kapasia)
	Health (Sundarganj Paurashava)
	Shelter /housing (Tarapur)
	WASH (Belka)
Jamalpur	Agriculture (Belgacha)
	Community infrastructures (Mahmudpur)
	Education (Kulkandi)
	Food Security (Hatibhanga, Sapdhari)
	Health (Dangdhora)
	Shelter /housing (Bahadurbad, Chikajani, Chinadulli, Ghosherpara, Noapara)
	WASH (Char Aam Khawa, Pathorshi)
Kurigram	Education (Kurigram Paurashava)
	Food Security (Bandebar, Jatrapur, Kodalkati, Mogolbasha, Narayanpur, Ramna, Shaheber Alga)
	Health (Noonkhawa, Panchgachi)

	Livelihood (Ballabher Khas, Berubari, Char Rajibpur, Hatia)
	Protection (Kachakata, Thanahat)
	Road (Raniganj)
	Road & Embankment (Kedar)
	Shelter /housing (Begumganj, Bhogdanga)
	WASH (Astomer Char, Bazra, Buraburi, Danthvanga, Gunaigachh, Holokhana)
Sirajganj	Accessibility (Naturpara)
	Community infrastructures (Rajapur)
	Health (Char Girish, Kiash rajbari, Nishchintopur)
	Livelihood (Sthall)
	Protection (Tekani)
	Shelter /housing (Khashpukuria, Umarpur)
	WASH (Bara Dhul)

Annex 2: Current priorities of the Areas

1st Priority needs	Number of Union	2nd Priority needs	Number of Union	3rd Priority needs	Number of Union
Bandarban	12	Bandarban	12	Bandarban	12
Food (for people)	1	Food (for people)	1	Food (for people)	1
Repairing damaged house	1	Repair of road	2	Repair of Tube well	1
Restoration of livelihood activities	8	Repair of Tube well	1	Repairing damaged house	1
Safe drinking water	2	Repairing damaged house	1	Restoration of livelihood activities	1
Bogura	2	Restoration of livelihood activities	1	Safe drinking water	1
Repairing damaged house	1	Safe drinking water	4	Sanitation bathing space/water	3
Restoration of livelihood activities	1	Sanitation/toilet facilities	2	Sanitation/toilet facilities	4
Gaibandha	9	Bogura	2	Bogura	2
Food (for people)	3	Access to markets to sell	1	Sanitation/toilet facilities	1
Repair of Schools	1	Repair of Tube well	1	Transport and access to markets	1
Repairing damaged house	2	Gaibandha	9	Gaibandha	9
Restoration of livelihood activities	1	Food (for people)	1	Children returning to school	1
Sanitation bathing space/water	1	Repair of Latrine	1	Repair of Bridge and culvert	1
Sanitation/toilet facilities	1	Repair of road	1	Repair of Embankment	2
Jamalpur	13	Repair of Schools	1	Repair of road	1
Repair of road	5	Repairing damaged house	3	Repair of Tube well	2
Restoration of livelihood activities	3	Restoration of livelihood activities	1	Restoration of livelihood activities	2
Safe drinking water	4	Sanitation bathing space/water	1	Jamalpur	13
Transport and access to markets	1	Jamalpur	13	Food (for people)	1
Kurigram	26	Food (for people)	1	Repair of Embankment	1
Food (for people)	3	Repair of Bridge and culvert	4	Repair of Tube well	1
Repair of road	11	Repairing damaged house	2	Restoration of livelihood activities	1

1st Priority needs	Number of Union	2nd Priority needs	Number of Union	3rd Priority needs	Number of Union
Repair of Tube well	2	Safety and security	1	Safe drinking water	2
Repairing damaged house	3	Sanitation/toilet facilities	2	Safety and security	2
Restoration of livelihood activities	2	Seedling for upcoming crop	2	Sanitation/toilet facilities	3
Safe drinking water	1	Transport and access to markets	1	Seedling for upcoming crop	2
Sanitation/toilet facilities	2	Kurigram	26	Kurigram	26
Seedling for upcoming crop	1	Food (for people)	3	Food (for people)	1
Sirajganj	10			Health and hygiene materials/commodities (incl. menstrual hygiene materials)	1
Food (for people)	1	Repair of Bridge and culvert	2	Other (specify)	1
Repair of Latrine	1	Repair of Latrine	3	Repair of Bridge and culvert	1
Repair of road	1	Repair of road	3	Repair of Latrine	3
Repairing damaged house	5	Repairing damaged house	2	Repair of road	1
Sanitation bathing space/water	1	Restoration of livelihood activities	2	Repair of Tube well	5
Sanitation/toilet facilities	1	Safe drinking water	3	Repairing damaged house	3
Grand Total	72	Sanitation bathing space/water	1	Restoration of livelihood activities	1
		Sanitation/toilet facilities	2	Safe drinking water	1
		Seedling for upcoming crop	2	Sanitation/toilet facilities	5
		Transport and access to markets	1	Seedling for upcoming crop	2
		Sirajganj	10	Sirajganj	10
		Food (for people)	1	Feed for livestock	1
		Repair of Bridge and culvert	1	Health and hygiene materials/commodities (incl. menstrual hygiene materials)	1
		Repair of Embankment	1	Repairing damaged house	1
		Repair of Latrine	2	Restoration of livelihood activities	1
		Repair of road	1	Safe drinking water	1
		Repair of Tube well	1	Safety and security	1
		Safe drinking water	2	Sanitation bathing space/water	1

Data Source: Union level field survey

Annex 3: total Affected Population and major socio economic data of the affected community

District	Bandarban	Bogura	Gaibandha	Jamalpur	Kurigram	Sirajganj
Total Affected Pop	44383	234645	597497	2161660	965740	328611
Percentages of Affected Population	11.33	6.88	25.08	94.30	46.65	10.55
Total Affected HH	9242	67945	147765	535265	240525	82281
Extreme poverty headcount ratio (%)	21.60	6.70	30.30	34.20	44.30	22.70
Extreme poverty headcount ratio, Rank	47/64	6/64	58/64	61/64	64/64	48/64
Poverty Head Count Ratio 2016	63.2	27.2	46.7	52.5	70.8	30.5
Estimated Extreme Poor HH Affected (Lower Poverty Line)	1996	4552	44773	183061	106553	18678
Estimated Number of Poor Affected (Upper Poverty Line)	5841	18481	69006	281014	170292	25096
Response allocation in BDT amount per capita(affected HH)	2440	81	1190	188	1466	726
Response allocation in BDT amount per capita (affected Poor HH)	3861	296	2549	359	2071	2379

Data Source: NDRCC, Questionnaire Survey and BBS

Annex 4: Assessment Team

CONTACTS

1. Kaiser Rejve – CARE Bangladesh,
 Director-Humanitarian and Resilience
Kaiser.rejve@care.org

2. Md Shofiul Alam
Programme Coordinator
 Start Fund Bangladesh
 E: progco@startfundbangladesh.org

Role	Agency	Name
Advisory Committee	Director Humanitarian and Resilience Program CARE Bangladesh	Kaiser Rejve
	Country Manager Start Fund Bangladesh	Sajid Raihan

Role	Agency	Name
Assessment Coordinator	CARE Bangladesh	Md Jafar Iqbal
Field coordination	Start Fund Bangladesh	Md Shofiul Alam
Core analysis and Reporting Team	Start Fund Bangladesh	Md Shofiul Alam (Lead)
	Start Fund Bangladesh	Imtiaz Ahmed
	Uttaran	Jahin Shams Sakkhar
	CARE Bangladesh	Mrityunjoy Das
	CARE Bangladesh	Apurba Swatee Mahboob
	CARE Bangladesh	Sarah Mohammad

Annex 5: Contributing Agency (Field level data collection)

District	Upazila	Union Name	Lead Organization	Contact Focal of Lead organization	Data Collection Organization	Data Collection Team Leader Name
Bandarban	Lama Upazila	Fashiakhali, Lama Pourashava, Lama Sadar	World Vision	Rahat Ara Sirajum Monir (01729297017)	WV_BNKS	M A Aziz, WV (01755593074) Kajal Kanti Dey, BNKS (0171580310)
Bandarban	Rowangchari	Rowangchari Sadar, Tarachha Union	Caritas	Josephpriti kanti Tripura, Abdur Rob (1825502659)	Taimu Bandarban	Josephpriti kanti Tripura, Abdur Rob (1825502659)
Bandarban	Thanchi Upazila	Bolipara, Thanchi Sadar Union	Caritas	Simon Amlai, Aung Kyaw Jaw (1556531058)		Simon Amlai, Aung Kyaw Jaw (1556531058)
Bandarban	Ruma Upazila	Paindu, Ruma Sadar Union,	Caritas	Suvraw Kanty Chowdhury (1840144523), Ripon Chakma (01823874202)	Taimu Bandarban	Suvraw Kanty Chowdhury (1840144523); Ripon Chakma (01823874202, 01553759360)
Bandarban	Bandarban Sadar Upazila	Bandarban Sadar Union, Bandarban Pourashava, Kuhalong	World Vision	Rahat Ara Sirajum Monir (01729297017)	WV_BNKS	Joseph Tripura, WV (01730069244) Ubanu Marma, BNKS (01556619094)
Bogura	Sariakandi	Sariakandi, Chandanbaisha	NDP	Mollah Abdullah Al Mehedi	NDP	Mollah Abdullah Al Mehedi
Gaibandha	Sundarganj	Belka, Horipur, Tarapur, Kapashia, Sundarganj Paurashava	Concern Worldwide Bangladesh	Bijoy Krishna Nath	ASOD	Md. Anwar Hossain
Gaibandha	Fulchhari	Uria, Udakhali, Gazaria, Kanchipara Union	Gana Unnayan Kendra (GUK)	Shofiul Alam, Start Fund Bd	GUK	Motiar Rahman (1712562258), Syeda shehinur begum (1712703865), A. Razzaque (01735979612)
Jamalpur	Dewangonj	Char Amkhawa, Hatibhanga, Dangdhora, Bahadurabad, Chikajani	Islamic Relief	Golam Motasim Billah	Islamic Relief Bangladesh,	Farid Ahded, Md. Shamsul Alam
Jamalpur	Islampur	Chinadulli , Belgacha, Noarpara, Sapdhori	Islamic Relief,	Golam Motasim Billah	Islamic Relief Bangladesh	AKM Ahsan Uddin (017777741985), Sabikun Nahar, Dr. Kamrul Islam
Jamalpur	Melandah	Mahmudpur, Ghosherpara Union	Christian Aid led consortium (HelpAge with AID-Comilla, DAM)	Shofiul Alam	DAM	Md.Jahangir Alam
Jamalpur	Islampur	Nowapara, Patharsi Union	Christian Aid led consortium (HelpAge with AID-Comilla, DAM)	Golam Motasim Billah	IR, DAM	Sabikun Nahar, Bishonath Ghosh (01714680413)

District	Upazila	Union Name	Lead Organization	Contact Focal of Lead organization	Data Collection Organization	Data Collection Team Leader Name
Kurigram	Chilmari	Ashtamir Char	CARE	Jafar Iqbal	Solidarity	Mithun Mondal
Kurigram	Raumari	Bandaber & Danthvanga	HelpAge International	Anamul Haque	AID-COMILLA	Md. Delwar Hossain
Kurigram	Ulipur	Begumganj, Bazra, Hatia, Tetrai Union	Concern Worldwide Bangladesh and OXFAM And MJSKS	Bijoy Krishna Nath	RDRS Bangladesh	
				Fredrick Shuvro Nath	ELNAH Phase-II, MJSKS	Shachin Chandra Sarker 01712875972
				Shofiul Alam, Start Fund Bd	MJSKS	Md Mozibur Rahman
Kurigram	Ulipur	Gunaigachh	Save the Children	Mostak Hussain and Mohammad Shamsuzzaman	Mahideb Jubo Somaj Kallayan Somity-MJSKS	Astrin Kumar Karmokar
Kurigram	Kurigram Sadar	Jatrapur, Panchgachi, Holokhana,	Concern Worldwide Bangladesh	Bijoy Krishna Nath	RDRS Bangladesh	Nur-A-Alam (1712111601) , Md. Ahammed Hossain (1745034203)
Kurigram	Nageshwari	Kedar, Kochakata, Bolloverkhas, Narayanpur, Noonkhawa, Berubari	Plan International	Golam Rabbani	SOLIDARITY	Hridoy Ranjan Ray (1740305018), Aleya Begum, Morshada Khanom, Mr. Abdul Quader, Abdul Kder Raju (1717114623),
Kurigram	Kurigram Sadar	Kurigram Paurashava, Vogdanga, Mogolbasha,	Plan International	Golam Rabbani	SOLIDARITY	Boby (1714558594), Hridoy Ranjan Roy (1740305018)
Kurigram	Char Rajibpur	Rajibpur & Kodailkati	HelpAge International	Anamul Haque	AID-COMILLA	Md.Hafizur Rahman, 01719244199
Kurigram	Chilmari	Ranigonj, Thanahat and Romna Union	Habitat for Humanity International Bangladesh	Mizanur Rahman	Mahideb Jubo Somaj Kallayan Somity (MJSKS)	Md.Mozibur Rahman
Kurigram	Ulipur	Shaheber Alga, Buraburi,	CARE	Jafar Iqbal	SOLIDARITY	Pabitra Kumar Sarkar (1714802680), Hridoy Ranjan Ray (1740305018)
Sirajganj	Belkuchi Upazila	Bordhul Union.	NDP	Shofiul Alam, Start Fund Bd	NDP	Mollah Abdullah Al Mehedi
Sirajganj	Belkuchi Upazila	Rajapur, Bordhul Union.	NDP	Shofiul Alam, Start Fund Bd	NDP	Mollah Abdullah Al Mehedi
Sirajganj	Kazipur Upazila	Chargirish, Khasrajbari, Natuarpara, Nishchintopur, Tekani	NDP	Shofiul Alam, Start Fund Bd	NDP	Mollah Abdullah Al Mehedi
Sirajganj	Chauhali	Umarpur, Khaspukuria, Sthal Union	Manab Mukti Sangho (MMS)	Shofiul Alam, Start Fund Bd		Md. Humayon Kabir (17333338376), Md. Habibullah Bahar

Annex 6: Key Informants Interview questionnaire

Inter-Agency Joint Post Emergency Response Needs Assessment Monsoon Flood 2019

The objective of assessment is to provide a rapid overview of the post emergency response situation while assessing the quality and effectiveness of response along with identifying persisting needs. This assessment will allow to design and plan long term recovery needs which allow community be more resilient during upcoming disaster.

Once the assessment has been agreed, the following steps will be taken by the Assessment Team to complete this format:

- All agencies within the upazila will coordinate with upazila lead agency for coordination.
- Each Team (at least two member) will visit at union level. Fill in one format for each union visited
- Consult (UP Chairmen, Up Secretaries, ward members) to fill out this format
- Visit a number of different locations in the affected Union before filling this formats with authorities
- When there is conflicting information, the Assessment Team should fill the format in using their best idea at the time on the basis of discussion with authorities, based on their understanding of the disaster’s impact, their own professional experience, secondary data, and lessons learned from similar disasters
- When accessibility is challenged, but where phone communication is possible, the format can be completed over the phone with the permission of the organization/team coordinating the assessment.
- Uses **estimations** of the numbers/percentages of people affected in different ways (providing estimate is challenging, but local authorities are in the best position to do this

1. General Information				
1.1. Date of assessment		1.2. Name and contact details of the Team Leader; Organization		
1.3. Names of team members	Name and Phone:	Name and Phone:	Name and Phone:	Name and Phone:
2. Location of assessment				
2.1. District		2.2. Upazila		

2.3. Union/Paurashava/City Corporation		GPS point (if available)	
2.4. Category of the area of the site (Predominantly): <input type="checkbox"/> City Corporation <input type="checkbox"/> Paurashava <input type="checkbox"/> Rural/Union		2.5. Description of the area (Tick only one): <input type="checkbox"/> Char area <input type="checkbox"/> Erosion Prone Area <input type="checkbox"/> Flood plain <input type="checkbox"/> Other	
3. Specific Location of Affected Population			
3.1 Total number of Village/ward in your union?	3.2 Number of affected Village/ward affected in your union?	3.3 Estimated % of overall population affected in the Union?	3.4 Estimated population affected? <i>(Indicate the answer using # of affected persons OR # of affected households)</i>
			Individuals Households
3.5 Which are the three worst affected villages/ Wards? <i>(Please write 3 village names in each category)</i>		1. 2. 3. OR all Wards are equally badly affected <input type="checkbox"/> (If so, tick box)	
4 Impact and damages of Disaster -1 Question			
4.1	What sectors are worst affected due to monsoon flood 2019? <i>Put tick all that apply and Rank accordingly: 1st, 2nd, 3rd)</i>	<input type="checkbox"/> Food Security <input type="checkbox"/> Livelihood <input type="checkbox"/> Education <input type="checkbox"/> protection <input type="checkbox"/> Accessibility <input type="checkbox"/> Market price hike <input type="checkbox"/> Health <input type="checkbox"/> Shelter /housing <input type="checkbox"/> Community infrastructures (Mention name)..... <input type="checkbox"/> WASH <input type="checkbox"/> Other (Please specify).....	
5 Damages of Community infrastructure and communications - 2 Question			
No	Question	Option / Checklist	

5.1	What community infrastructure has been damaged by the disaster? (Tick all that apply)	<input type="checkbox"/> No infrastructure damaged <input type="checkbox"/> Embankment.....Km <input type="checkbox"/> Electricity line KM <input type="checkbox"/> Schools or other education institutionsnumber <input type="checkbox"/> Hat/market not functioning..... Number <input type="checkbox"/> Health Facilities..... Number <input type="checkbox"/> Others (please specify)..... <input type="checkbox"/> Bridge/culvert..... Number <input type="checkbox"/> Earthen roads.....KM <input type="checkbox"/> Herring bond road..... km <input type="checkbox"/> Pucca road..... km <input type="checkbox"/> Religious buildings..... Number <input type="checkbox"/> Do not know
5.2	Observations/ Other (if any regarding community infrastructures)	
5.3	Is this union was affected by monsoon flood 2017? (If no directly go to 6.1)	<input type="checkbox"/> Yes <input type="checkbox"/> No
5.4	If 5.3 answered Yes, Was there any community Infrastructure damage in 2017?	<input type="checkbox"/> No infrastructure damaged <input type="checkbox"/> Embankment.....Km <input type="checkbox"/> Electricity line KM <input type="checkbox"/> Schools or other education institutionsnumber <input type="checkbox"/> Other community institutions.....Number <input type="checkbox"/> Religious buildings..... Number <input type="checkbox"/> Health Facilities..... Number <input type="checkbox"/> Others (please specify)..... <input type="checkbox"/> Bridge/culvert..... Number <input type="checkbox"/> Earthen roads.....KM <input type="checkbox"/> Herring bond road..... km <input type="checkbox"/> Pucca road..... km <input type="checkbox"/> Hat/market not functioning..... <input type="checkbox"/> Other community institutions.....number <input type="checkbox"/> Do not know
5.5	Were the damaged community infrastructures of flood 2017 repaired?	<input type="checkbox"/> Not at all <input type="checkbox"/> Some portion repaired <input type="checkbox"/> Fully repaired

5.6	If repaired, what was the sources of fund for repairing damaged Community infrastructures?	<input type="checkbox"/> Government Regular project(Through respective agency) <input type="checkbox"/> Government Recovery project (Through DDM, MoDMR) <input type="checkbox"/> By community <input type="checkbox"/> Non-Government Organization (NGO/INGO/UN) <input type="checkbox"/> Individuals (Please mention name) <input type="checkbox"/> Others (Please specify)	
5.7	Do you think that timely repair of this community infrastructures after flood 2017 would reduce the loss and damages of flood 2019?	<input type="checkbox"/> Yes, Due to not repairing timely the damages were severe this year. <input type="checkbox"/> No	
6 Assistance, Unmet needs and current Priorities (overall)-8 Question			
No	Questions	Option / Checklist	Observations/ Other
6.1	Since the disaster, has there been any assistance provided to this union? (If no directly go to 6.4)	<input type="checkbox"/> Yes <input type="checkbox"/> No	
6.2	If yes, by whom? (<i>Tick all that are appropriate</i>)	<input type="checkbox"/> Religious group <input type="checkbox"/> Government <input type="checkbox"/> NGO / UN / BDRCS <input type="checkbox"/> Other groups (e.g. farmers, CBO, nearby village) <input type="checkbox"/> Do not know	Please mention name here
6.3	What Type of supports/assistances you received?	<input type="checkbox"/> Food <input type="checkbox"/> Cash <input type="checkbox"/> Education <input type="checkbox"/> Livelihood <input type="checkbox"/> Health <input type="checkbox"/> Shelter <input type="checkbox"/> Community infrastructures <input type="checkbox"/> Water <input type="checkbox"/> sanitation <input type="checkbox"/> Hygiene <input type="checkbox"/> Other (Please specify).....	
6.4	Were the supports /assistances were timely and enough to meet the emergency needs in your union?	<input type="checkbox"/> Fully met the emergency needs <input type="checkbox"/> Partially met the emergency needs <input type="checkbox"/> Met needs of very limited person <input type="checkbox"/> Not at all	
6.5	If no How community managed to meet those needs or what were the challenges? Or what were the Negative coping mechanism. <i>Put tick all that apply and Rank accordingly: 1st, 2nd, 3rd, 4th, 5th, 6th, 7th 8th</i>	<input type="checkbox"/> Distress selling of livestock <input type="checkbox"/> Migrate to other place <input type="checkbox"/> Distress selling of land <input type="checkbox"/> Skip meal <input type="checkbox"/> suffer from diseases <input type="checkbox"/> Stop child education <input type="checkbox"/> Early marriage <input type="checkbox"/> Unhygienic <input type="checkbox"/> Selling other resources (E.g. boat, net, tree) <input type="checkbox"/> Others (Please specify).....	

6.6	What was the most prior needs that community didn't receive? Or Are there any type of support that would be more effective if communities received immediately after emergencies?																														
6.7	Are there any unmet and still persisting emergency need in our community? If yes please specify?																														
6.8	<p>What are the top priorities (needs) right now for this community? (<i>Put tick of utmost need and Rank accordingly: 1st, 2nd, 3rd, 4th, 5th, 6th, 7th 8th.....</i>)</p>	<table border="0"> <tr> <td><input type="checkbox"/> Safe water to drink</td> <td><input type="checkbox"/> Sanitation/toilet facilities</td> </tr> <tr> <td><input type="checkbox"/> Sanitation bathing space/water</td> <td><input type="checkbox"/> Food (for people)</td> </tr> <tr> <td><input type="checkbox"/> Restoration of livelihood activities</td> <td><input type="checkbox"/> Repair of Bridge and culvert</td> </tr> <tr> <td><input type="checkbox"/> Repair of Embankment</td> <td><input type="checkbox"/> Access to markets to sell</td> </tr> <tr> <td><input type="checkbox"/> Access to markets to buy goods</td> <td><input type="checkbox"/> Repairing damaged house</td> </tr> <tr> <td><input type="checkbox"/> Repair of Tube well</td> <td><input type="checkbox"/> Repair of Latrine</td> </tr> <tr> <td><input type="checkbox"/> Health care services (incl. reproductive health</td> <td><input type="checkbox"/> Support for feelings of fear and insecurity</td> </tr> <tr> <td><input type="checkbox"/> Children returning to school</td> <td><input type="checkbox"/> Transport and access to markets</td> </tr> <tr> <td><input type="checkbox"/> Repair of road</td> <td><input type="checkbox"/> Safety and security</td> </tr> <tr> <td><input type="checkbox"/> repair of Schools</td> <td><input type="checkbox"/> Health and hygiene materials/commodities (incl. menstrual hygiene materials)</td> </tr> <tr> <td><input type="checkbox"/> Emergency Education materials</td> <td><input type="checkbox"/> Protection of children and adolescent girls and women</td> </tr> <tr> <td><input type="checkbox"/> Clothing, footwear, bedding</td> <td><input type="checkbox"/> Seedling for upcoming crop</td> </tr> <tr> <td><input type="checkbox"/> Fuel and cooking materials</td> <td><input type="checkbox"/> Feed for livestock</td> </tr> <tr> <td></td> <td><input type="checkbox"/> Other (specify).....</td> </tr> </table> <p><i>Please write others here and ranked accordingly...</i></p>	<input type="checkbox"/> Safe water to drink	<input type="checkbox"/> Sanitation/toilet facilities	<input type="checkbox"/> Sanitation bathing space/water	<input type="checkbox"/> Food (for people)	<input type="checkbox"/> Restoration of livelihood activities	<input type="checkbox"/> Repair of Bridge and culvert	<input type="checkbox"/> Repair of Embankment	<input type="checkbox"/> Access to markets to sell	<input type="checkbox"/> Access to markets to buy goods	<input type="checkbox"/> Repairing damaged house	<input type="checkbox"/> Repair of Tube well	<input type="checkbox"/> Repair of Latrine	<input type="checkbox"/> Health care services (incl. reproductive health	<input type="checkbox"/> Support for feelings of fear and insecurity	<input type="checkbox"/> Children returning to school	<input type="checkbox"/> Transport and access to markets	<input type="checkbox"/> Repair of road	<input type="checkbox"/> Safety and security	<input type="checkbox"/> repair of Schools	<input type="checkbox"/> Health and hygiene materials/commodities (incl. menstrual hygiene materials)	<input type="checkbox"/> Emergency Education materials	<input type="checkbox"/> Protection of children and adolescent girls and women	<input type="checkbox"/> Clothing, footwear, bedding	<input type="checkbox"/> Seedling for upcoming crop	<input type="checkbox"/> Fuel and cooking materials	<input type="checkbox"/> Feed for livestock		<input type="checkbox"/> Other (specify).....	
<input type="checkbox"/> Safe water to drink	<input type="checkbox"/> Sanitation/toilet facilities																														
<input type="checkbox"/> Sanitation bathing space/water	<input type="checkbox"/> Food (for people)																														
<input type="checkbox"/> Restoration of livelihood activities	<input type="checkbox"/> Repair of Bridge and culvert																														
<input type="checkbox"/> Repair of Embankment	<input type="checkbox"/> Access to markets to sell																														
<input type="checkbox"/> Access to markets to buy goods	<input type="checkbox"/> Repairing damaged house																														
<input type="checkbox"/> Repair of Tube well	<input type="checkbox"/> Repair of Latrine																														
<input type="checkbox"/> Health care services (incl. reproductive health	<input type="checkbox"/> Support for feelings of fear and insecurity																														
<input type="checkbox"/> Children returning to school	<input type="checkbox"/> Transport and access to markets																														
<input type="checkbox"/> Repair of road	<input type="checkbox"/> Safety and security																														
<input type="checkbox"/> repair of Schools	<input type="checkbox"/> Health and hygiene materials/commodities (incl. menstrual hygiene materials)																														
<input type="checkbox"/> Emergency Education materials	<input type="checkbox"/> Protection of children and adolescent girls and women																														
<input type="checkbox"/> Clothing, footwear, bedding	<input type="checkbox"/> Seedling for upcoming crop																														
<input type="checkbox"/> Fuel and cooking materials	<input type="checkbox"/> Feed for livestock																														
	<input type="checkbox"/> Other (specify).....																														
6.9	What types of intervention modalities	<input type="checkbox"/> Direct money <input type="checkbox"/> Cash for work or community infrastructure <input type="checkbox"/> Direct agricultural input	Hints: Don't tell them the options																												

would be more effective?	<input type="checkbox"/> Long term development <input type="checkbox"/> Permanent community infrastructures (flood shelter, embankment road)
--------------------------	--

7 Development Programme - 5 Question

No	Questions	Option / Checklist	Observations/ Other
7.1	Are there were any development program on going before disaster? (If no please proceed to question no 8.1)	<input type="checkbox"/> Yes <input type="checkbox"/> No	
7.2	If yes, what is the name of the program?		
7.3	If yes, What are the types of support they are providing?	<input type="checkbox"/> Food Security <input type="checkbox"/> Livelihood <input type="checkbox"/> Education <input type="checkbox"/> Protection <input type="checkbox"/> Health <input type="checkbox"/> Shelter <input type="checkbox"/> Community infrastructures <input type="checkbox"/> WASH <input type="checkbox"/> Other (Please specify).....	
7.4	Did any Development program has changed their regular activities due to this flood	<input type="checkbox"/> Yes <input type="checkbox"/> No	
7.5	If yes, What type of activities they have taken by considering this flood?		

8.1 Information sources (please indicate the sources of information used in compiling this report along with the phone number)

Union Parishad Chairman UP Secretary Ward Member Local Community key informants Other.....

Phone number of the respondent:.....