

# SHELTER CLUSTER MEETING I Cabo Delgado and Nampula

---

8th October 2020



**Mozambique Shelter Cluster**

ShelterCluster.org

Coordinating Humanitarian Shelter

# AGENDA

---

1. Follow up from the previous Cluster Meeting
2. General Cluster Updates
3. Humanitarian Needs Overview
4. Response plan for Metuge
5. Pipeline materials for Shelter/NFI
6. Updates from the partners
7. Any other business

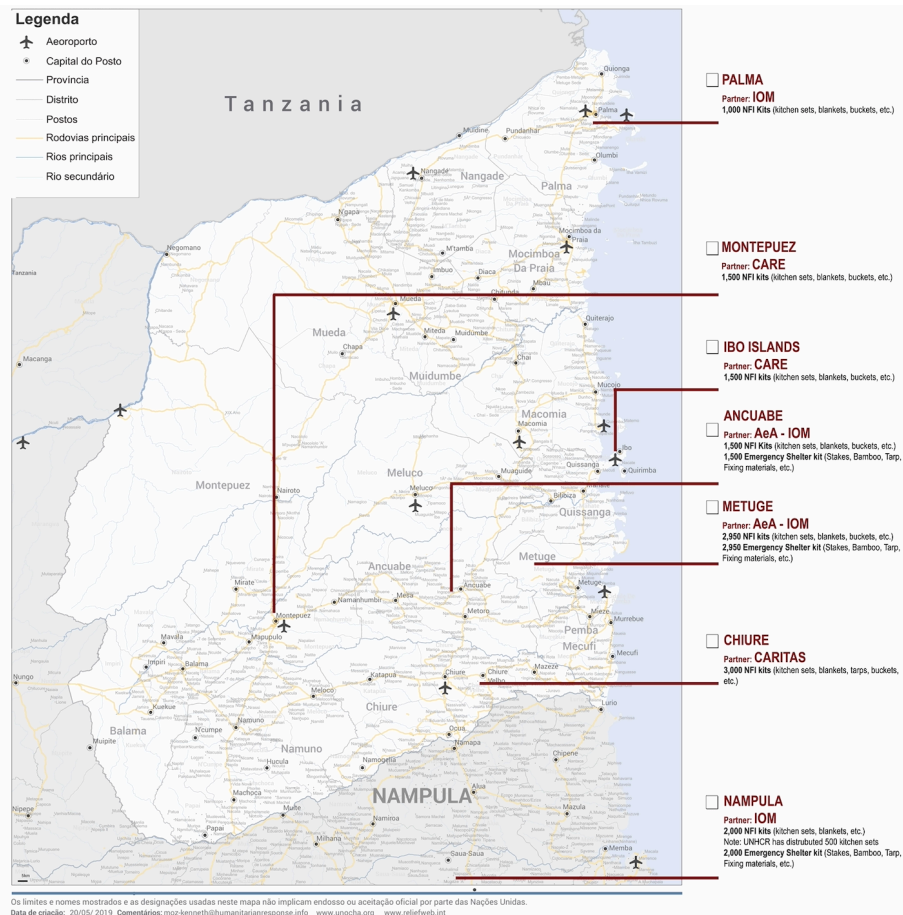


# FOLLOW UP FROM THE PREVIOUS CLUSTER MEETING

Plan for September:

## Distribution of Shelter/NFI kits

- What is the progress of the plan?
- What are the challenges?
- What are the changes?
- What is the action plan considering the current situation?



**Mozambique Shelter Cluster**  
ShelterCluster.org  
Coordinating Humanitarian Shelter

# FOLLOW UP FROM THE PREVIOUS CLUSTER MEETING

---

## Mecufi and Metuge assessment

Summary document including infographics showing the movement direction (origin – destination), key outstanding needs/challenges, etc., supported by the results of HH level analysis - **CARE**

- What is the status of this document?
- How could Cluster partners support?



# FOLLOW UP FROM THE PREVIOUS CLUSTER MEETING

---

## Nanjua resettlement area, Metuge district

Assessment of reconstruction status and recommendations – **Ayuda en Acción**

- What is the status of this document?
- How could Cluster partners support?



# GENERAL CLUSTER UPDATES

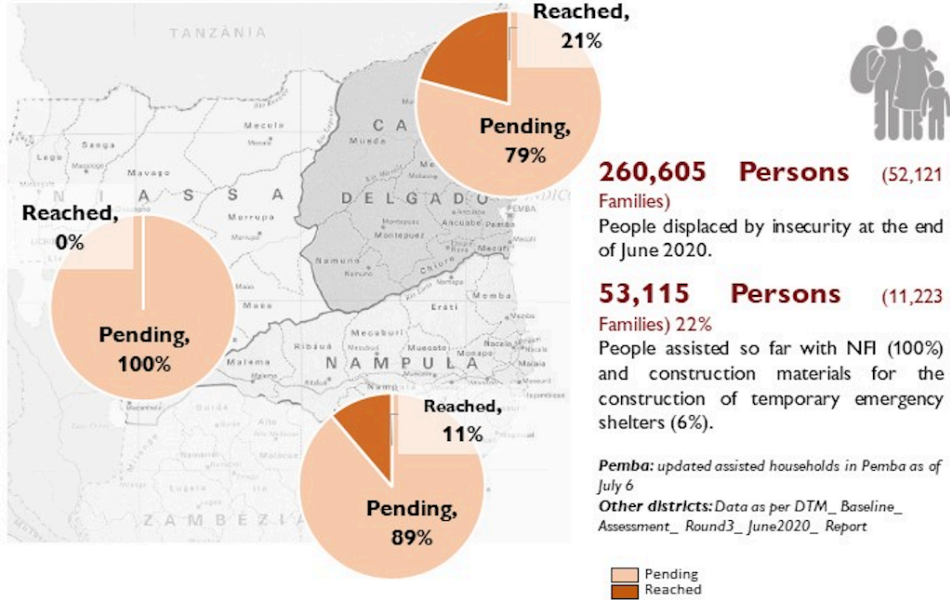
---

- **Humanitarian Needs Overview Submissions**
  - **9 October:** identification of sectoral people in need
  - **16 October:** submission of sectoral needs analysis narrative inputs
  - **23 October:** submission of sectoral people targeted and sectoral financial requirements
- **Humanitarian Response Plan Submissions**
  - **20 November:** submission of sectoral response narrative inputs
  - **16 October:** submission of sectoral needs analysis narrative inputs
  - **27 November:** finalisation and upload of sectoral project proposals



# HUMANITARIAN NEEDS OVERVIEW

## Cabo Delgado, Nampula and Niassa



**84,900 persons** (16,980 Families)

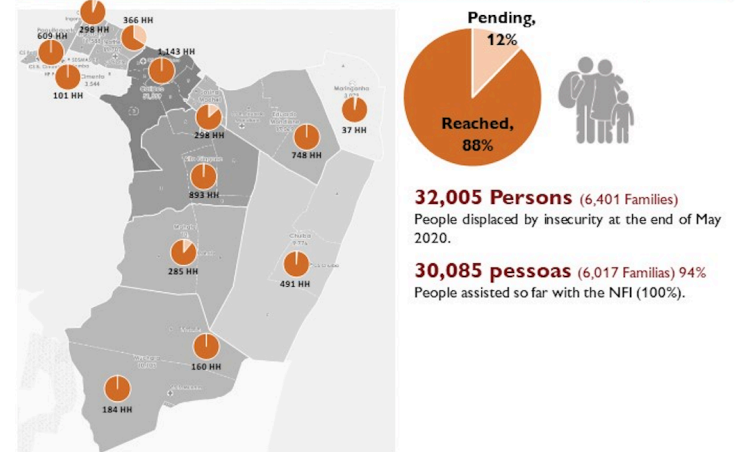
People displaced by insecurity that are estimated to need shelter assistance for the construction of an emergency shelter

**687 HHs** Have been reached with Emergency shelter assistance to date.

**5,500 kits** Are currently being procured to assist families to be resettled in transitional areas until it is safe to return to their places of origin.



## Pemba



**Mozambique Shelter Cluster**  
ShelterCluster.org  
Coordinating Humanitarian Shelter



# HUMANITARIAN NEEDS OVERVIEW

---

## Selection of 3 indicators

1. % of HH whose dwelling enclosure provides adequate security, privacy, and maintains possessions
2. % of HH with interior partition(s)
3. % of HHs whose dwelling enclosure provides adequate safety to the occupants, protection from exposure, and low risk of failure in predictable hazards.
4. % of HHs with access to a functional domestic living space
5. % or HHs currently living in unsustainable shelter situations
6. % of HHs whose original house was damaged resulting from the impacts of a disaster/conflict
7. % of HHs who are displaced due to community/regional hazards
8. % of HHs whose possessions are being affected by community/regional hazards
9. % of HHs with safe access to market for shelter-related items within an acceptable amount of time or distance
10. % of HH with access to basic infrastructures and essential services
11. % of HHs who are currently living in unsafe/unhealthy areas affected by community hazards
12. % of HHs without clear security of tenure within their community



# RESPONSE PLAN FOR METUGE



**25 de Junho IDP Collective Centre**  
Nangua | Metuge | Mozambique  
GPS 13°00'44.4"S | 40°23'03.1"E

## RAPID SITE OVERVIEW

3<sup>RD</sup> OCT 2020



### CURRENT CONTEXT

Following attacks in Bilibiza, Quissanga on 26 and 27 September 2020, over 2,800 families (numbers provided by local authorities) were displaced and accommodated in the Centros de Acomodacao 25 de Junho and Nangua. Multisectoral rapid assessments were completed and basic service provision initiated however with substantial gaps.

**PROVINCE** Cabo Delgado  
**DISTRICT** Metuge  
**POSTO** 25 de Junho and Nangua

**SITE TYPE** Collective Center/ Centro de Acomodacao (Temporary)  
**SITE MANAGER** CCCM partners and INGC

**MANAGEMENT TYPE** Mobile  
**EMAIL** [pascalco@iom.int](mailto:pascalco@iom.int) (CCCM cluster)



Photos: IOM/ CCCM oct 2020

### SHELTER & NON-FOOD ITEMS

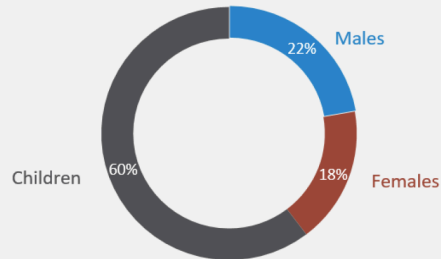
**Main shelter type:** ● school structures and improvised makeshifts  
**Main living location of IDPs in the site:** ● school structures and improvised makeshifts

**IDPs living without shelter in the site:** ● Yes  
**IDPs have more than 3.5m2 per person:** ● No  
**Shelters in a good state of repair:** ● No

**Shelter materials available:** Local Poles  
**Main NFI gaps:** Mosquito nets, blankets, NFI kits, shelter kits

### SITE POPULATION & DISPLACEMENT CONTEXT

2,823 HH / 12,583 persons IDPs  
(Local authorities' figures, verification ongoing)



Disaggregation provided by the authorities on 2 October 2020, verification ongoing. For further information: IOM, Mozambique

### ASSISTANCE PROVISION

Most recent displacement  
**Ongoing movement, new arrivals regularly observed on site**

Most recent displacement from  
**Bilibiza, Mahate Quissanga**

Host community present  
**In the vicinity**



- Who?
- What?
- How much?
- When?  
(Pending verification exercise)



**Mozambique Shelter Cluster**  
ShelterCluster.org  
Coordinating Humanitarian Shelter

# PIPELINE MATERIALS FOR SHELTER/NFI



Item	AVAILABLE STOCK   Units						TOTAL DISTRIBUTED TO DATE	TOTAL PROJECTED TO BE DISTRIBUTED	TOTAL BALANCE	UP COMING STOCK   Units							
	IOM	CRS/ CARITAS	COSACA	UNICEF	UNHCR	SUB Total stock				TOTAL		IOM/OFDA	IOM/CERF	IOM/ECHO	SUB Total stock	TOTAL	
										Item type	# of Units					Item type	# of Units
Blanket	6.000				15.000	21.000	Blanket	21.000	3.855	8.925	8.220	16.000			16.000	Blanket	16.000
Solar Crank Radios	4.101					4.101											
Radio: Fenix Solar, Crank and Light			138			138	Radios/Solar crank radios	5.239	3.855	-	1.384					Radios/Solar crank radios	-
Solar lamp					1.000	1.000						8.000			8.000		
Tarpaulin plastic rolls (4x60)						-											
Tarpaulin plastic rolls (4x60) for latrines			310			310											
4x7 Tarpaulin	360					360											
4x6 Tarpaulin	5.366		4.483			9.849	Tarpaulins	19.709	3.855	8.925	6.929		6.375	1.625	8.000	Tarpaulins	16.000
4x6 Tarpaulin (Blue)	190					190											
4 X 5 Tarpaulin sheets					3.000	3.000											
4 X 50 Tarpaulin rolls					6.000	6.000											
Rope Rolls			8			8											
Rope Rolls			9			9	Ropes	30	-	-	30					Rope	-
Rope Rolls			9			9											
Rope Rolls			4			4											
Kitchen Sets	699	500			3.000	4.199	Kitchen sets	4.325	1.176	-	3.149	8.040			8.040	Kitchen sets	8.040
Kitchen Sets			126			126											
Water Dispenser 10Li.	275		1.441		6.000	7.716	Water Dispenser Collapsible 10Lit	7.716	3.165	-	4.551	8.400			8.400	Water Dispenser Collapsible 10Lit	8.400
Soap	502	500		11.200		12.202											
Bathing Soap Lifeboy 175gr			16.136			16.136	Soap	43.784	-	17.850	25.934					Soap	-
Bathing Soap Lifeboy 100gr			15.446			15.446											
Buckets with Lid No Tap	300		240	1.400		1.940											
Buckets with Lid No Tap			344	1.750		2.094	Buckets	10.881	840	8.925	1.116	12.000			12.000	Buckets	24.000
Buckets with No Lid			177			177											
Buckets with Lid with Tap	670					670						12.000			12.000		
Bucket heavy duty					6.000	6.000											
Tool Kit	1.199	500				1.699	Tool kits	1.699	-	-	1.699					Tool kits	-
MHM Kits			1.875	875		2.750	MHM Kits / Dignity kits	2.750	2.679	-	71					MHM Kits / Dignity kits	-



# PIPELINE MATERIALS FOR SHELTER/NFI

---

1. Stock to be updated on a Weekly Basis
2. Stocks locations to be especified
3. NFI WASH related items need to be closely coordinated with WASH Cluster
4. What is the availability of mosquito nets? UNICEF?
5. Templates to be used for common Pipeline materials



## UPDATES FROM THE PARTNERS

---

1. Projects ongoing
2. Challenges
3. Support needed from the Cluster



## ANY OTHER BUSINESS

---

**Thank you very much!!!!**



**Mozambique Shelter Cluster**  
ShelterCluster.org  
Coordinating Humanitarian Shelter

Shelter Cluster Meeting | Cabo Delgado and Nampula | 8th October 2020