



# HOUSING CONSTRUCCIÓN PROJECT IN VULNERABLE COMMUNITIES FROM THE CENTER-WEST OF HONDURAS



# OUR HISTORY IN HONDURAS



Starts in 12 villages  
in Central Honduras

1983

Hurricane Mitch

1998

Earthquake

2009

COVID 19 Pandemic  
Eta & Iota Hurricans

2020

And still going...

2021

2030



Support for micro, small and medium enterprises

Sustainable management of natural resources

Food security & Agricultural development

Care/child survival & Community health

Low-cost housing construction

Water and sanitation systems

Promotion of Human Rights

# PROJECT SUMMARY

PROJECT AMOUNT US \$ 700.000.00

PROJECT PERIOD: 12 MONTHS



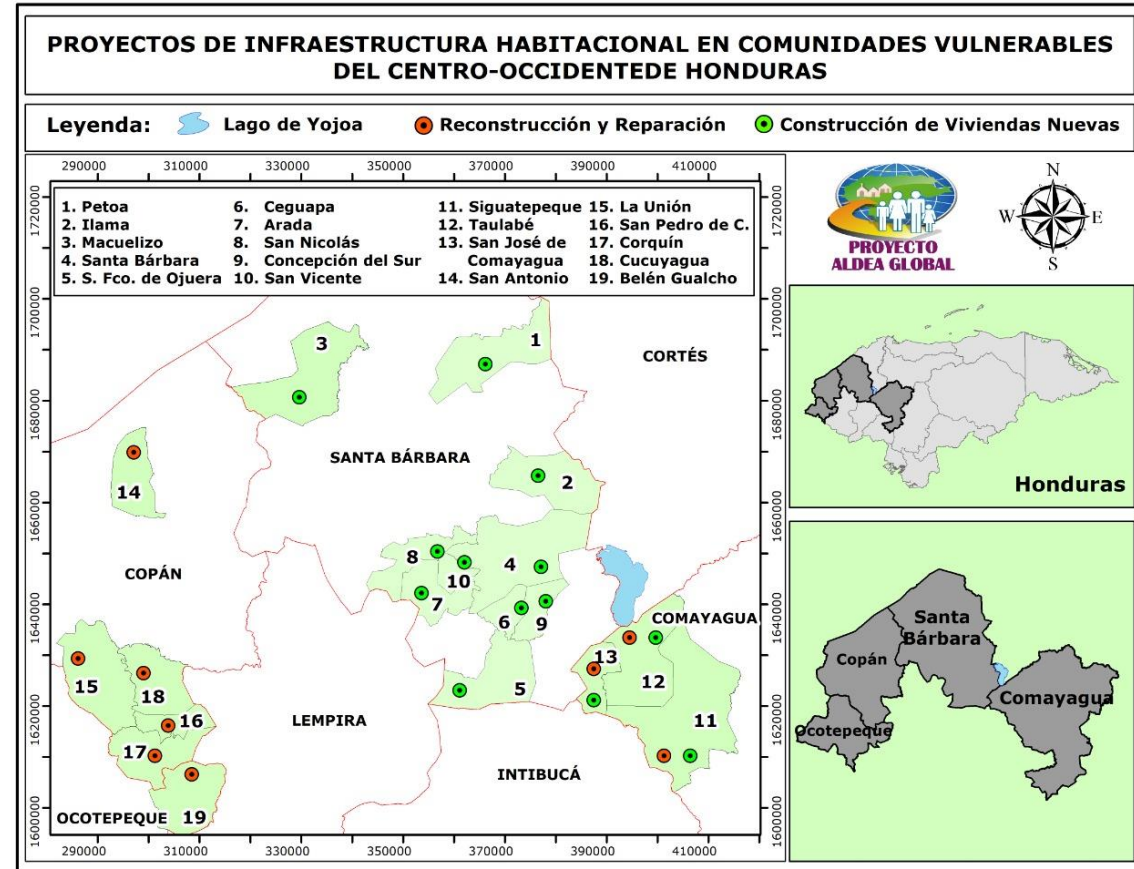
**110** NEW HOUSES (38.5 m<sup>2</sup>)

**100** HOUSE REPAIRS

# PROJECT LOCATION

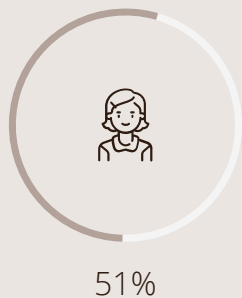
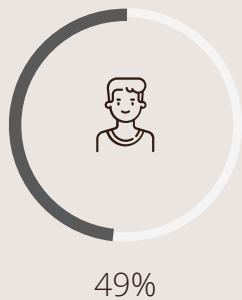
- 1 Santa Bárbara
- 2 Comayagua
- 3 Copán
- 4 Ocotepeque

PAG has offices and facilities located in different regions of the country

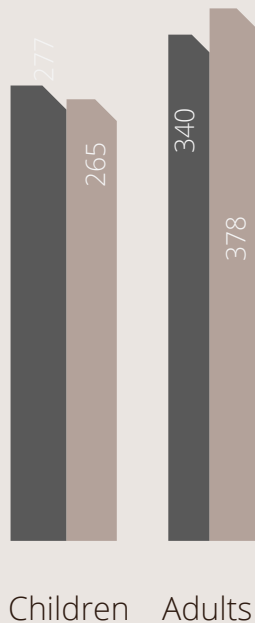


# BENEFICIARIES PROFILE

## GENDER



## AGE



## Project Target

1,260

People with disabilities

63

Elderly

25

# ACTIVITIES

01

Specific planning of the project and facilities in agreement with the community and local governments

Create baseline and prioritize beneficiary families

02

03

Acquisition of materials and construction or repair of houses

Delivery of housing, complementary support and M&E of the project

04

# OUR RESPONSABILITIES

## PAG

- Design and construction of housing
  - Foundations
  - Block walls
  - Zinc sheet roofs
  - Cement floors
  - Windows
  - Sanitary module
  - Clothes washing tank
  - Dishwasher
- Connections to public service systems

## DONORS

- Support project financing
- Implement the M&E Plan



## MUNICIPALITIES

- Authenticate the legality of land tenure
- Evaluate the risk of the lands for construction
- The public works of basic services for community.

## BENEFICIARIES

- Land for the construction.
- Stone materials
- Be included in construction for "Learning-Doing"
- Support in community projects

# HOUSE BUILDING PROCESS



Precast columns



Foundation



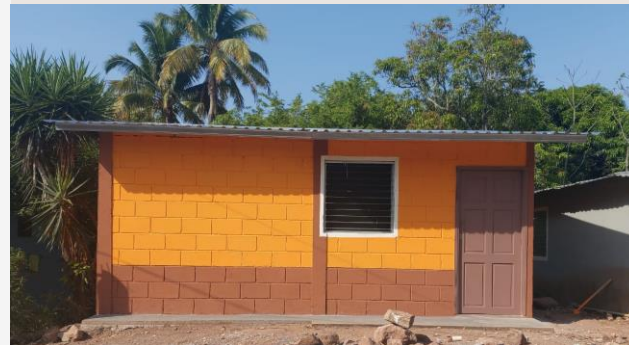
Structure of the house



Wall construction



Roof and floor



Windows, doors, toilet, shower, sink

# HOUSE VIEWS



BACK VIEW OF THE HOUSE

---

SIDE VIEW OF THE HOUSE

---



# Empowering families to reduce poverty and build just, peaceful, and productive communities based on Christian values



Do you have any questions?  
[chet@paghonduras.org](mailto:chet@paghonduras.org)  
+504 9990 6016  
[www.paghonduras.org](http://www.paghonduras.org)