

---

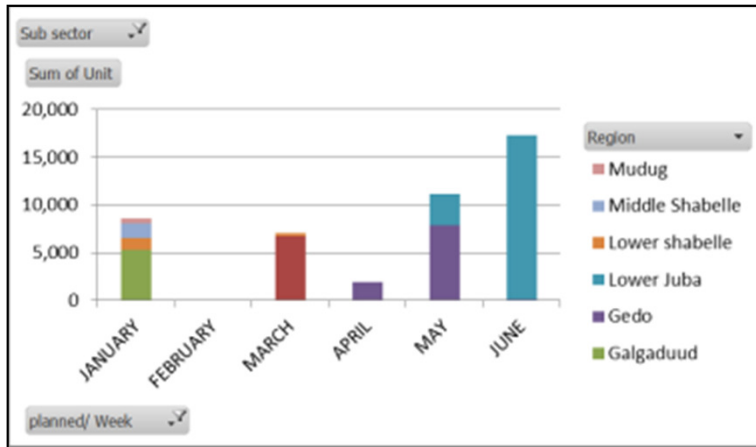
# QUARTERLY SHELTER CLUSTER MEETING JULY 2014

---

# **AGENDA**

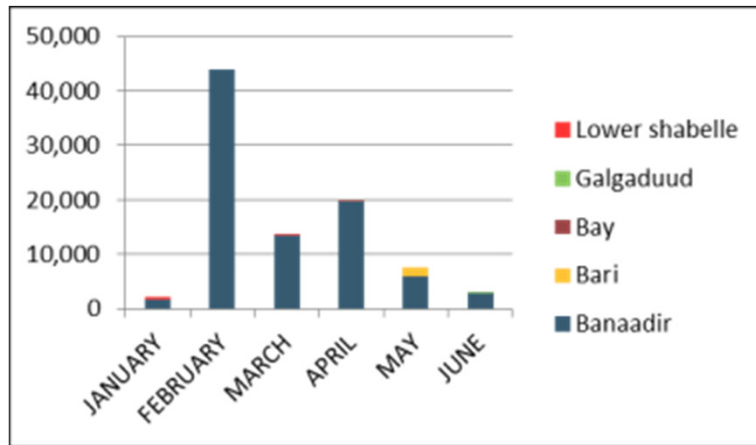
- 1. 2014 Mid Year Report and achievements**
- 2. Shelter Cluster structure and objectives for 2014**
- 3. Mapping infrastructure exercise**
- 4. Working groups**
- 5. Work-plan for the next 6 months, including trainings**
- 6. AOB**

# MID YEAR REVIEW: achievements



## 1. EMERGENCY SHELTER

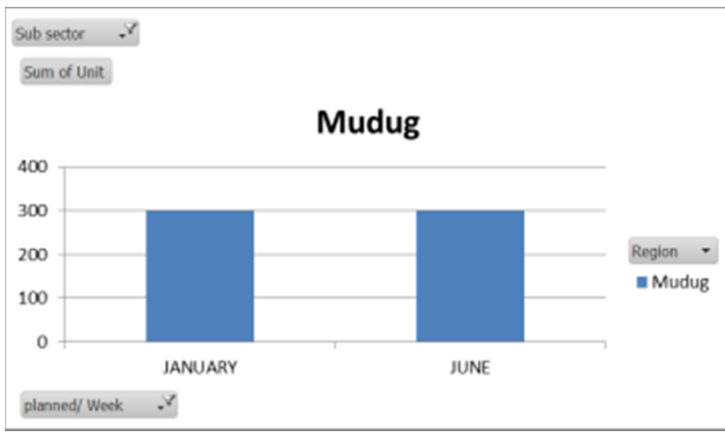
Mainly response to the offensive and the recent flooding in Mogadishu and Kismaayo.



## 2. TRANSITIONAL SHELTER

These projects are heavily under-funded. A stronger focus should be laid in laying foundations towards more sustainable solutions.

# MID YEAR REVIEW: achievements



## 3. PERMANENT SHELTER

In Puntland and Somaliland, there has been progress made in securing land tenure for IDPs to locally integrate (CHF funding and bi-lateral funding). HLP mainstreaming project.

## 4. CAPACITY BUILDING

Training in infrastructure mapping exercise, Training in the use of mobile technology, Fund-raising with CHF, preparation of training activities, working group monthly activities,...

Row Labels	Banaadir	Bari	Bay	Galgaduud	Gedo	Lower Juba	Lower shabelle	Middle Shabelle	Mudug	Grand Total
EAPs (more than 5 items together)		282	6,780	5,334	9,606	20,400		1,500	600	44,502
Emergency Shelter kits		108					1,500			1,608
Transitional Shelter kits	81,414									81,414
Permanent shelter									600	600
Plastic Sheeting			2,190							2,190
Transitional Shelter	5,856	1,680	444	6			690			8,676
<b>Grand Total</b>	<b>87,270</b>	<b>3,870</b>	<b>9,414</b>	<b>5,340</b>	<b>14,988</b>	<b>20,400</b>	<b>4,290</b>	<b>1,500</b>	<b>1,200</b>	<b>138,990</b>

**“Using (pre-positioned NFI) stocks from the 2011, the cluster has been able to reach larger numbers than expected despite limited funding for 2014”.**

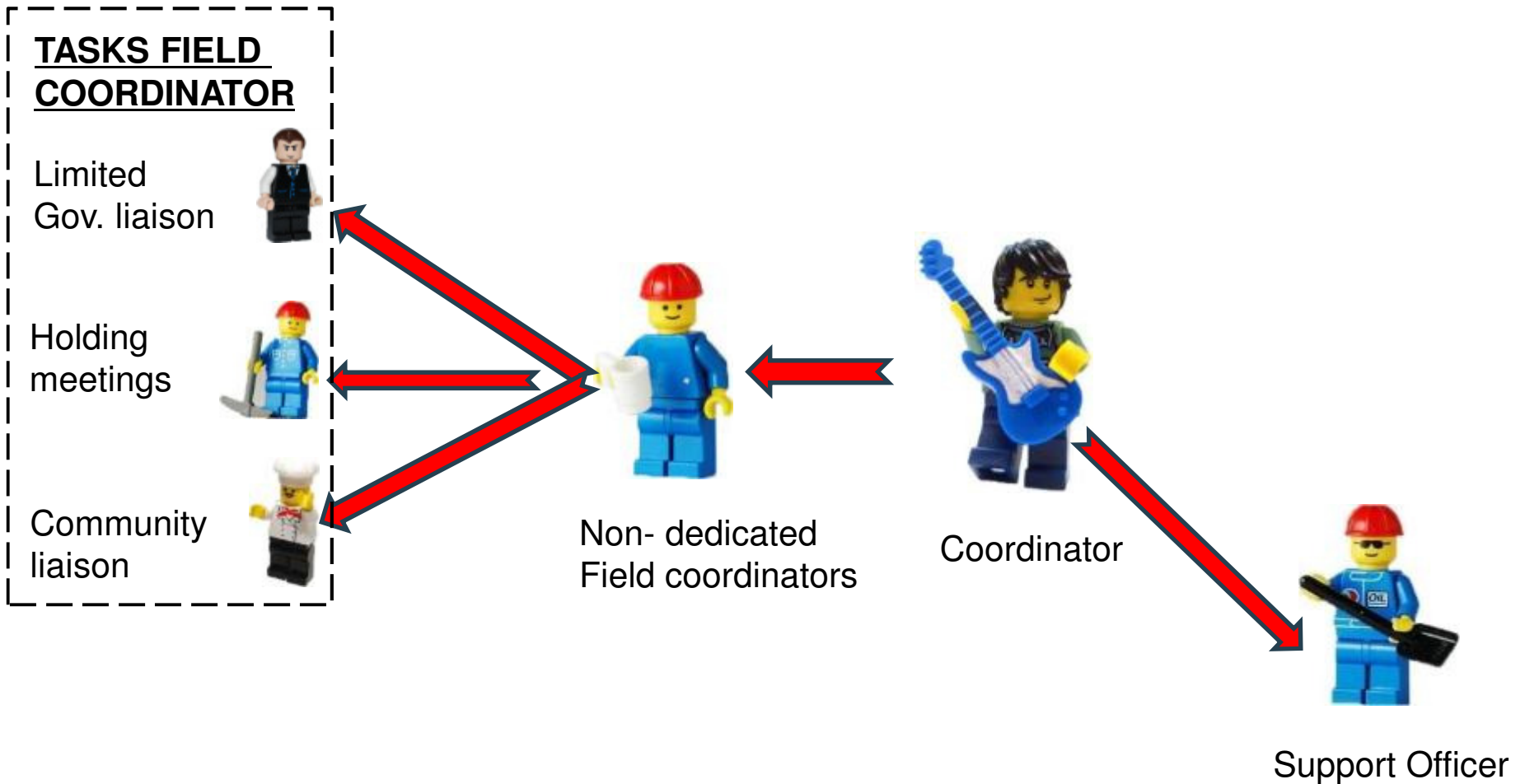
**“However, funding levels for permanent shelter has been decreasing since the beginning of 2013.”**

**“Transitional shelter has helped to stabilize the protracted IDP populations since mid-2011 in Puntland and Somaliland. Nevertheless, these more resilience-based programmes have reduced and several core Shelter Cluster partners are looking at closing down their shelter programmes in different locations due to funding constraints.”**

---

## **2. SHELTER CLUSTER STRUCTURE 2014 AND MAIN OBJECTIVES FOR CAPACITY BUILDING**

# FORMER STRUCTURE: ALL UNHCR STAFF



**TASKS FIELD COORDINATOR**

Contingency planning



Gov. liaison



Coordination



Community liaison



Advocacy



# REVISED STRUCTURE:

## FIELD OFFICES



DFI



50% dedicated Field coordinators (Shelter Partners)

## SECRETARIAT



Coordinator



Remote support GENEVA



HLP advisor



Intern (recruited)

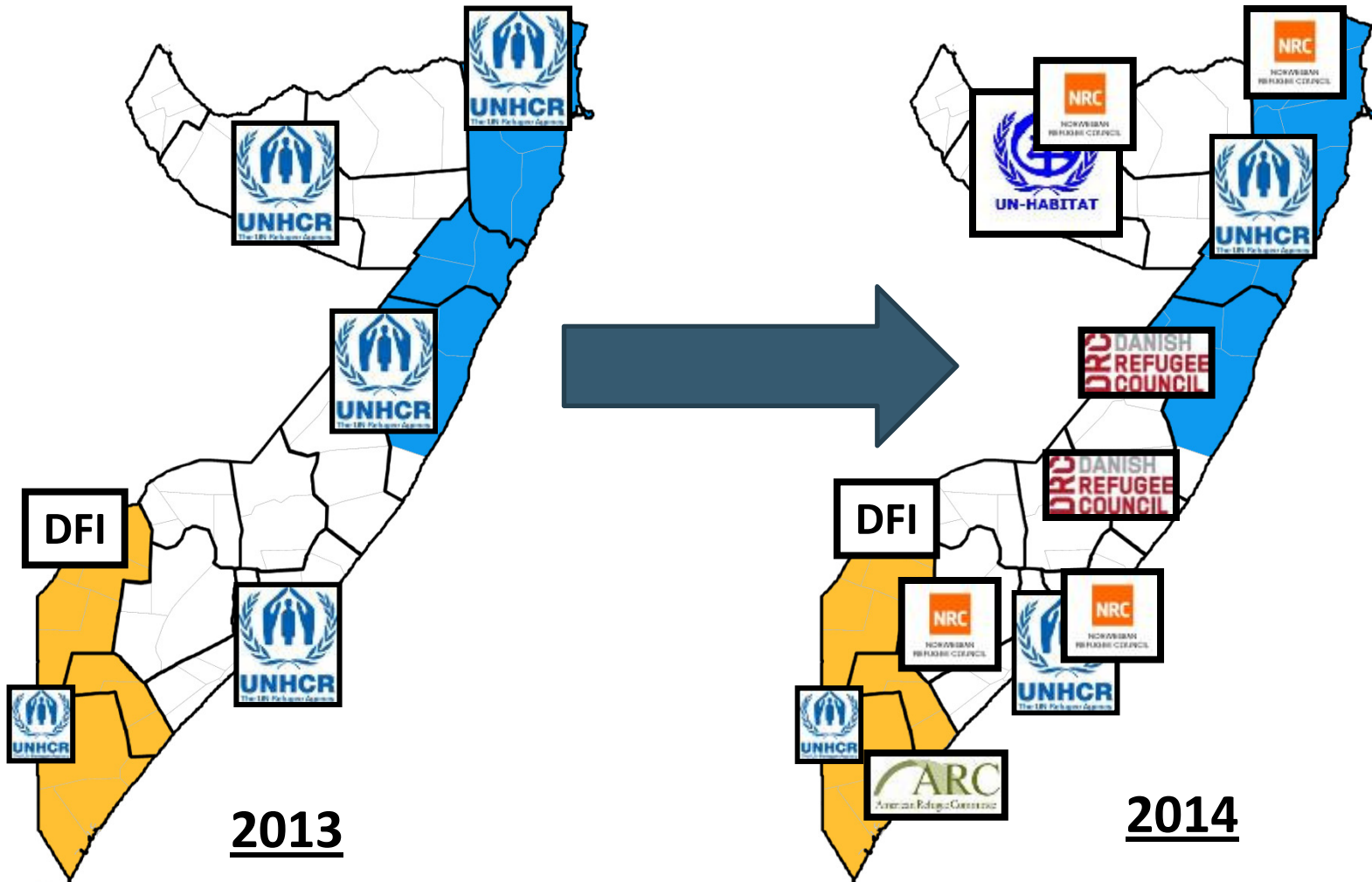


IM/GIS expert (recruited)



Support Officer (recruited) 8

# COMBINED UN AND NGO LEAD FIELD STRUCTURES



# CORE ACTIVITIES OF THE REGIONAL COORDINATORS

- **4W reporting (who, where, when, what)**
- **Coordination of Emergency responses**
- **Advocacy on HLP issues through WG**
- **Coordination of Joint Assessments, including infrastructure mapping**
- **Dissemination of information to members**
- **Promote community consultation process**

# **STEP BY STEP PROCESS 2013 TO 2014**

**IN AUG 2013, SHELTER CLUSTER WAS RE-STRUCTURED (SAG approved).**

**IN SEPT 2013, COORDINATORS WERE TRAINED (10)**

**IN 2013, MAPPING EXERCISE WAS PILOTED IN KISMAAYO/BAIDOA WITH THE GREAT SUPPORT OF REACH**

**IN 2013, THE PILOT OF THE DIGITAL PLATFORM WAS LAUCHED**

**IN 2013, SUSTAINABLE SHELTER SOLUTIONS WORKING GROUP WAS STARTED**

---

# **STEP BY STEP PROCESS 2013 TO 2014**

**IN 2014, SHELTER CLUSTER IMPROVED FIELD RELATIONS**

**IN 2014, 3 LOCATIONS WERE TRAINED IN THE MAPPING EXERCISE AND IT WAS 100% IMPLEMENTED IN MOGADISHU, BOSSASO AND GAALKACYO**

**IN 2014, HLP MAINSTREAMING SESSIONS HAVE STARTED (NRC)**

**IN 2014, THE DIGITAL PLATFORM WAS EXPANDED AND ALL ACTIVE SHELTER PARTNERS WILL RECEIVE THEIR OWN RESTRICTED ACCESS**

**IN 2014, SUSTAINABLE SHELTER SOLUTIONS WORKING GROUP DEVELOPED TOOLS AND DEFINITION PAPERS**

# **OBJECTIVES FOR 2014**

## **STRONG FOCUS ON CAPACITY BUILDING**

- \*HLP-mainstreaming
- \*M&E framework and training
- \*Field trainings on the mapping exercise and tools
- \*Training of trainers / Workshop
- \*Protection/GBV mainstreaming

## **SECOND TRAINING FOR SHELTER CLUSTER COORDINATORS**

EXPANSION OF THE **DIGITAL PLATFORM** TO THE PARTNERS

CONTINUATION OF THE INFRASTRUCTURE **MAPPING EXERCISE**

(ALL SOMALIA BY DECEMBER 2014)

SHELTER CLUSTER **FIELD LEVEL**: SMALLER TRAINING MODULES  
ON THE WEB PLATFORM, MAPPING METHODOLOGY, M&E

---

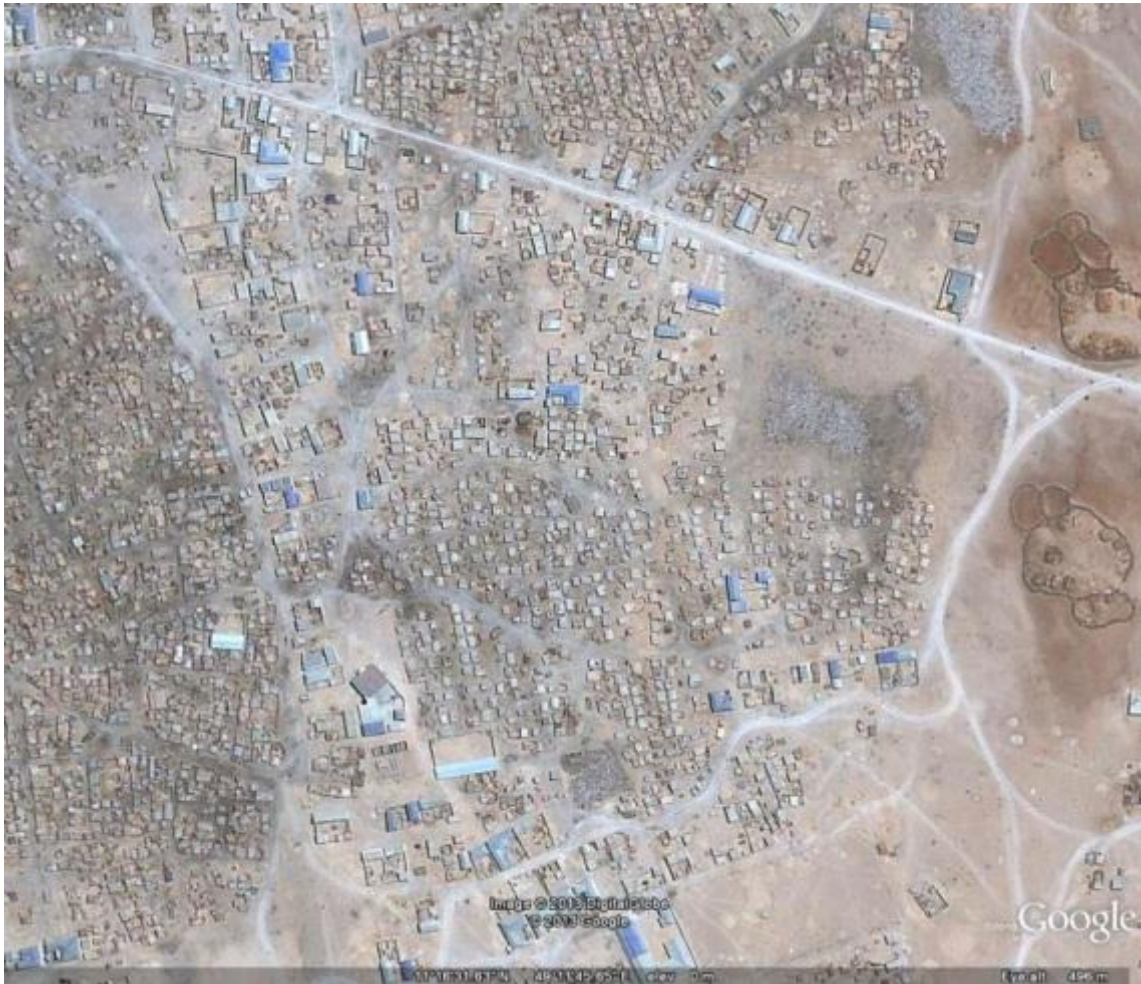
# 3. INFRASTRUCTURE MAPPING EXERCISE

# INFRASTRUCTURE MAPPING

## WHY THE SHELTER CLUSTER TO LEAD THIS PROCESS?

- \*SHELTER CLUSTER = IDP FOCUSED IN SOMALIA OPERATIONS**
- \*SITE PLANNING IS A CORE INTEGRATED ACTIVITY OF SHELTER PROJECTS**
- \*SHELTER IS CROSS CUTTING WITH WASH ACTIVITIES, EDUCATION ACTIVITIES AND PROTECTION ACTIVITIES**
- \*TO PROVIDE A QUICK SNAP SHOT OF THE EXISTING SITUATION THAT CAN BE REPLICATED IN TIME**
- \*CAPACITY OF THE SHELTER PARTNERS IN THE FIELD WHO HAVE MANY IDP FOCUSED PROJECTS**

# Infrastructure Mapping: methodology



- Determine within the settlement, how many sub-settlements there are.
- Collect all secondary data that exists on the settlement (for example last registration data of last NFI/shelter distribution)

EXAMPLE AJURAN, BOSSASO

# Infrastructure Mapping: methodology



EXAMPLE AJURAN, BOSSASO

Set up a meeting with each respective settlement leader to have a **KEY INFORMATION INTERVIEW** and go through the questions related to general information of the settlement. This will provide general demographic data:

- Approximate Nr of HHs?
- Where are they from?
- When was the camp created?
- Land tenure?
- Sudden emergencies?
- ...

# Infrastructure Mapping: methodology

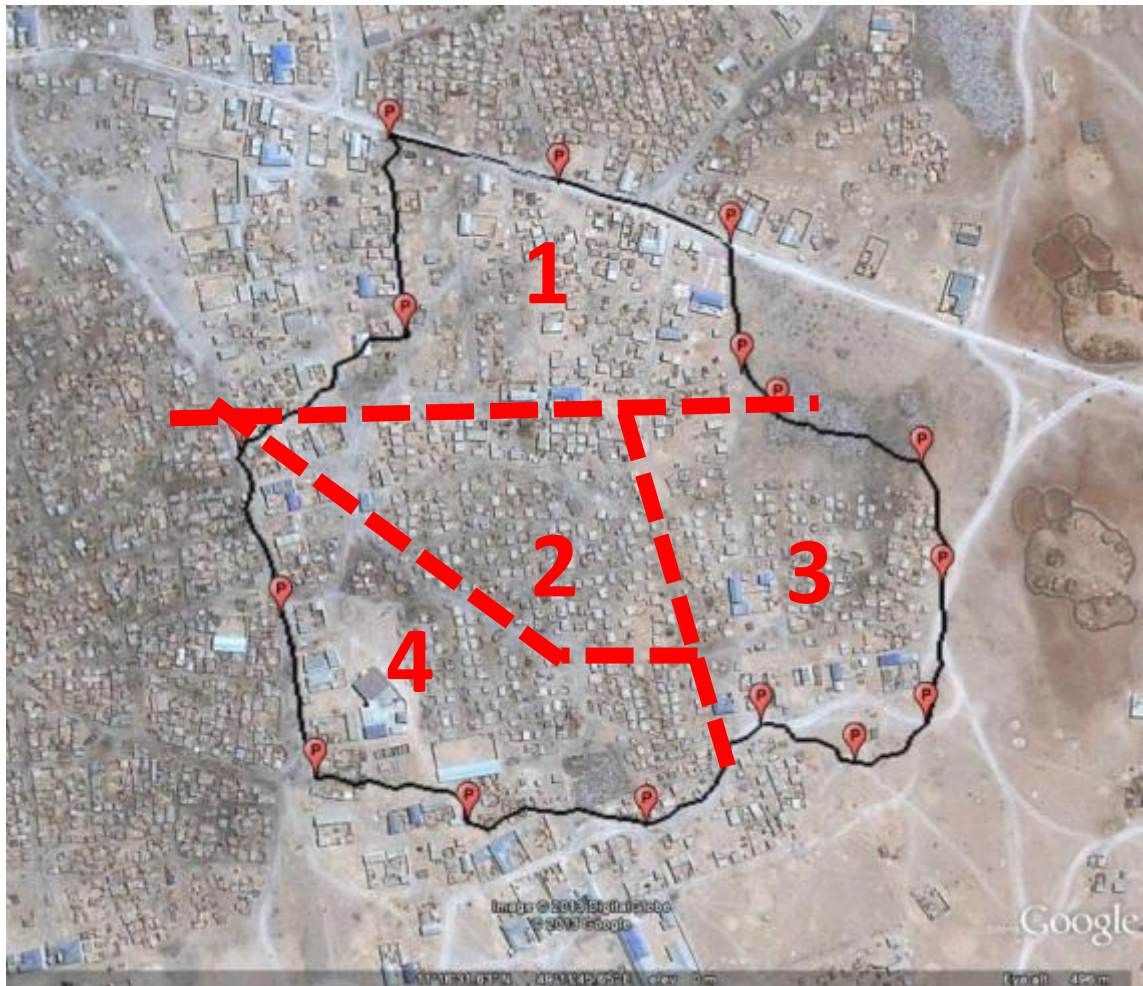


EXAMPLE AJURAN, BOSSASO

Go around the boundary of the settlement and capture a HH survey every 10 HHs

It will provide information to the overall size of the settlement and general data on how the IDPs live (nr buuls/HH, type of shelter, ...)

# Infrastructure Mapping: methodology



EXAMPLE AJURAN, BOSSASO

Go back to the office and upload all the information.

Split up the settlement in different blocks using existing natural boundaries: roads, fire breaks, vegetation, ...

Assign a block to each group of enumerators. The enumerators should work in pairs.

# Infrastructure Mapping: DENSITIES



## DENSITY

In the centre of their block, they will capture the location of 20 different households/buuls living all in one area. This will provide us with a representative size and will provide information regarding the density of each different block.

20 households/420m<sup>2</sup>  
=> 21m<sup>2</sup>/household

This will help cross-checking the HH size of the settlement.

# Infrastructure Mapping: FACILITIES



**LATRINES:** the following information will be captured mainly through direct observation:

- Type of Latrine
- Functional or not?
- Maintenance
- Lockable or not?
- Segregated or not?
- ...

EXAMPLE AJURAN, BOSSASO

# Infrastructure Mapping: FACILITIES

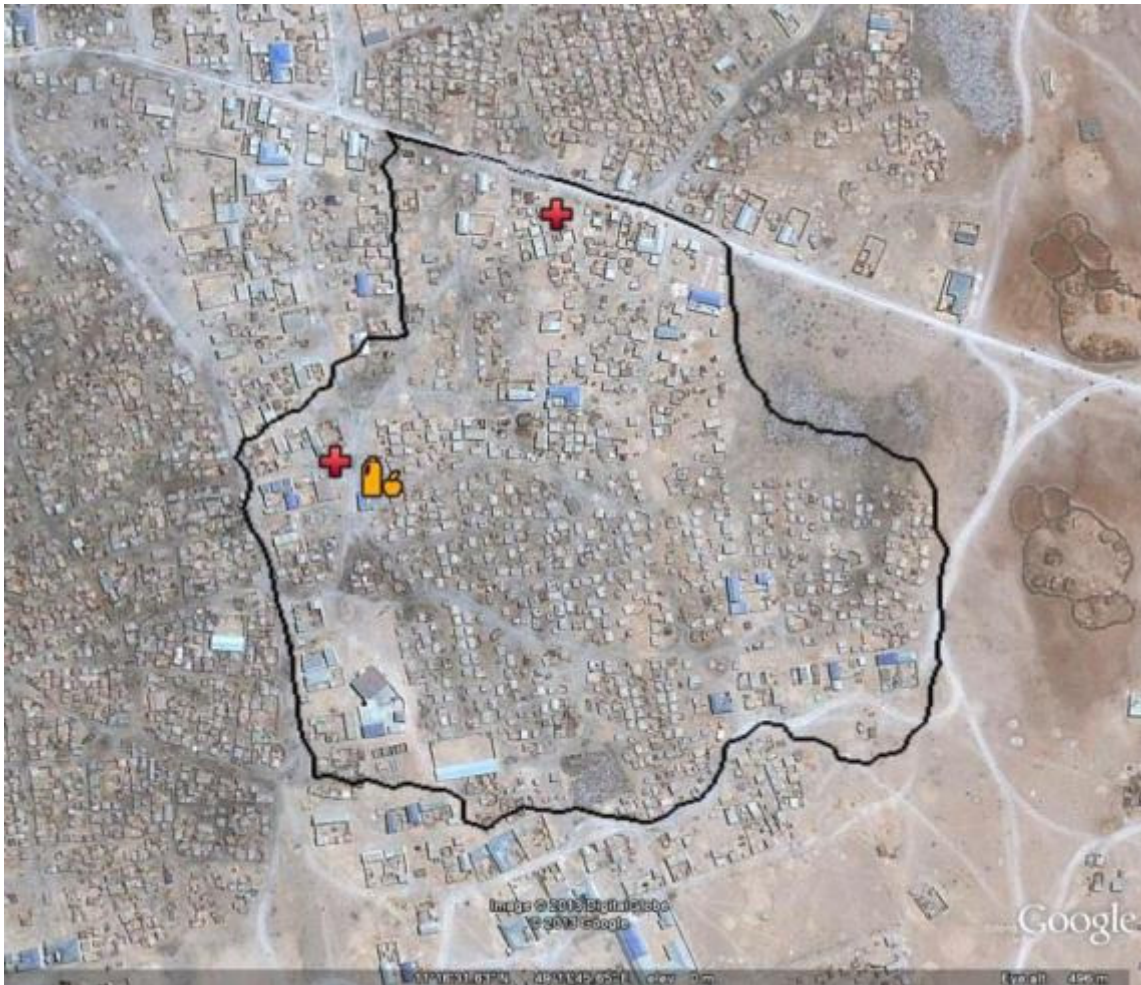


EXAMPLE AJURAN, BOSSASO

**WATER POINTS:** the following information will be captured mainly through direct observation, and also through interview with a neighbouring IDP household:

- Type of water point (water kiosk, tank, berkad,...)
- Functional or not?
- Price / 20l jerry can
- Storage capacity
- Located on private land?
- ...

# Infrastructure Mapping: FACILITIES

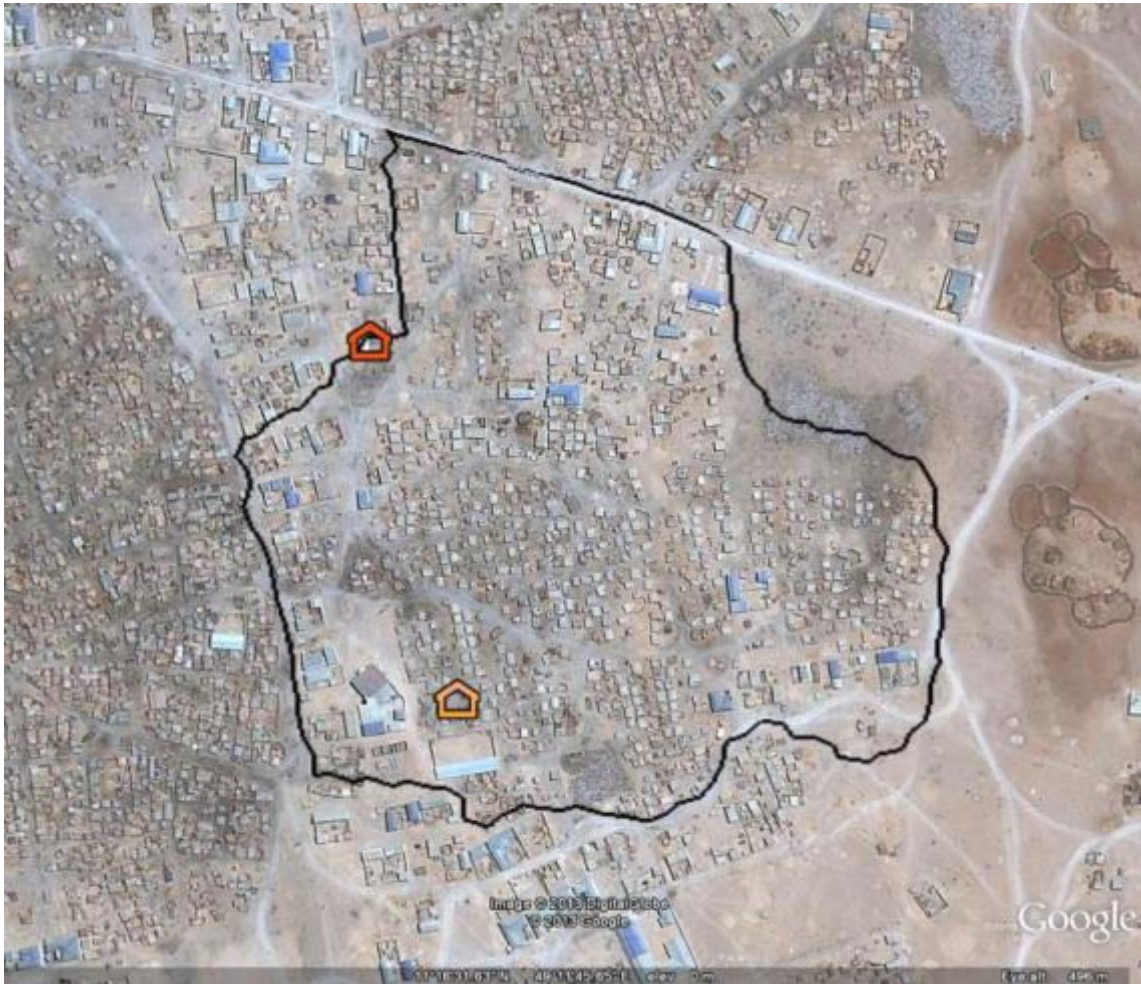


EXAMPLE AJURAN, BOSSASO

**HEALTH CENTRES:** the following information will be captured mainly through direct observation and through a discussion with the doctor/nurse:

- Type of health facility
- Functioning? By who?
- Staffing available?
- Health services available?
- Water supply?
- Electricity supply?
- Bed capacity?
- ...

# Infrastructure Mapping: FACILITIES

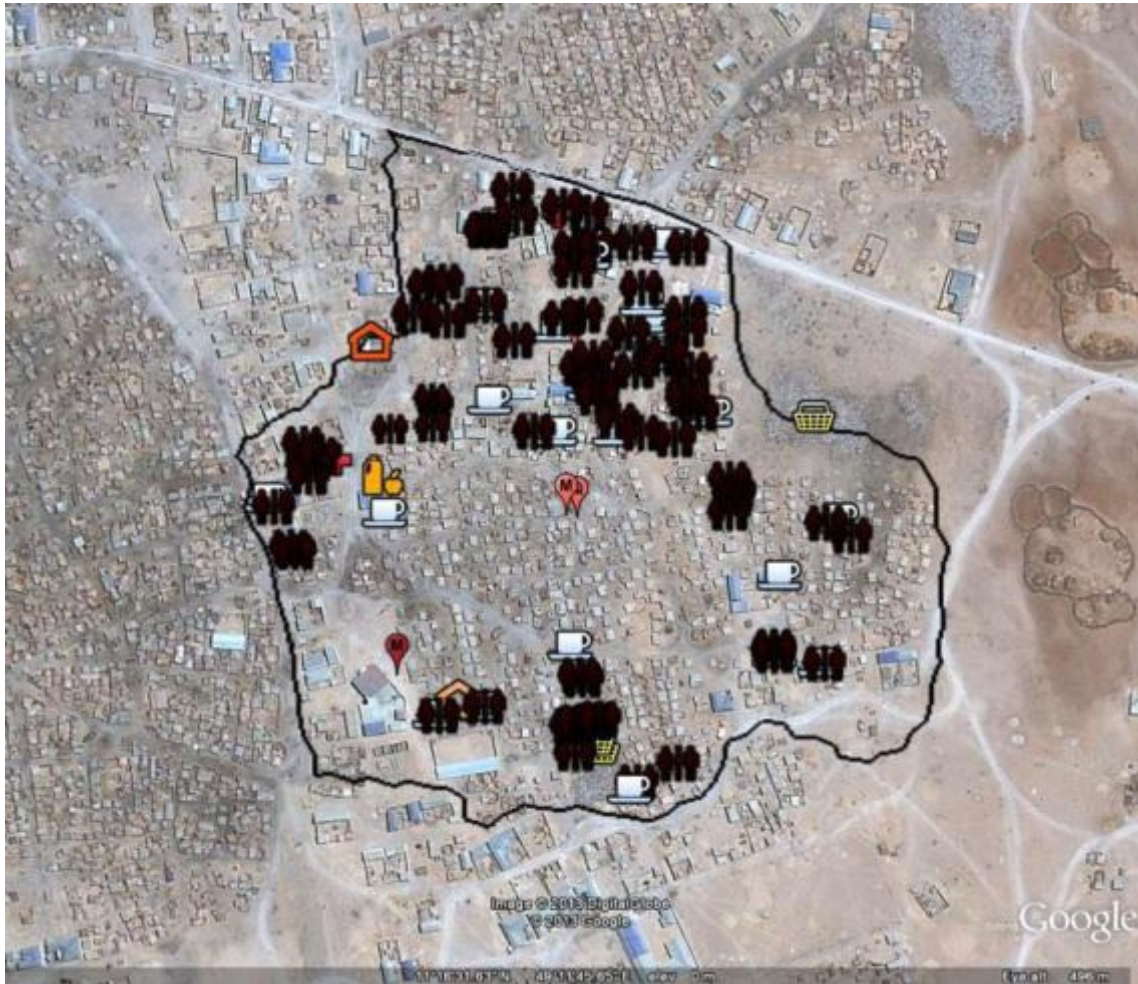


EXAMPLE AJURAN, BOSSASO

**SCHOOLS:** the following information will be captured mainly through direct observation and discussion with head master/teacher:

- Level of education
- Signs of teaching
- Nr of classrooms
- Nr of students
- Nr of IDP students
- Water-supply
- Is there a committee?
- ...

# Infrastructure Mapping: FACILITIES



EXAMPLE AJURAN, BOSSASO

**OTHERS:** the following information will be captured mainly through direct observation:

- Police posts
- Solar lighting systems
- Garbage collection sites
- Markets/Kiosks
- Community Centres

**RESULT = MAP  
+ 1 PAGE SNAP  
SHOT REPORT**

---

# SUPPORT

**SHELTER CLUSTER SECRETARIAT**



**COORDINATION ROLE  
DIGITAL PLATFORM AND MOBILES  
TRAINING  
ANALYSIS  
MAPPING AND FINAL REPORT**

---

# SUPPORT

**FIELD LEVEL**

**=**

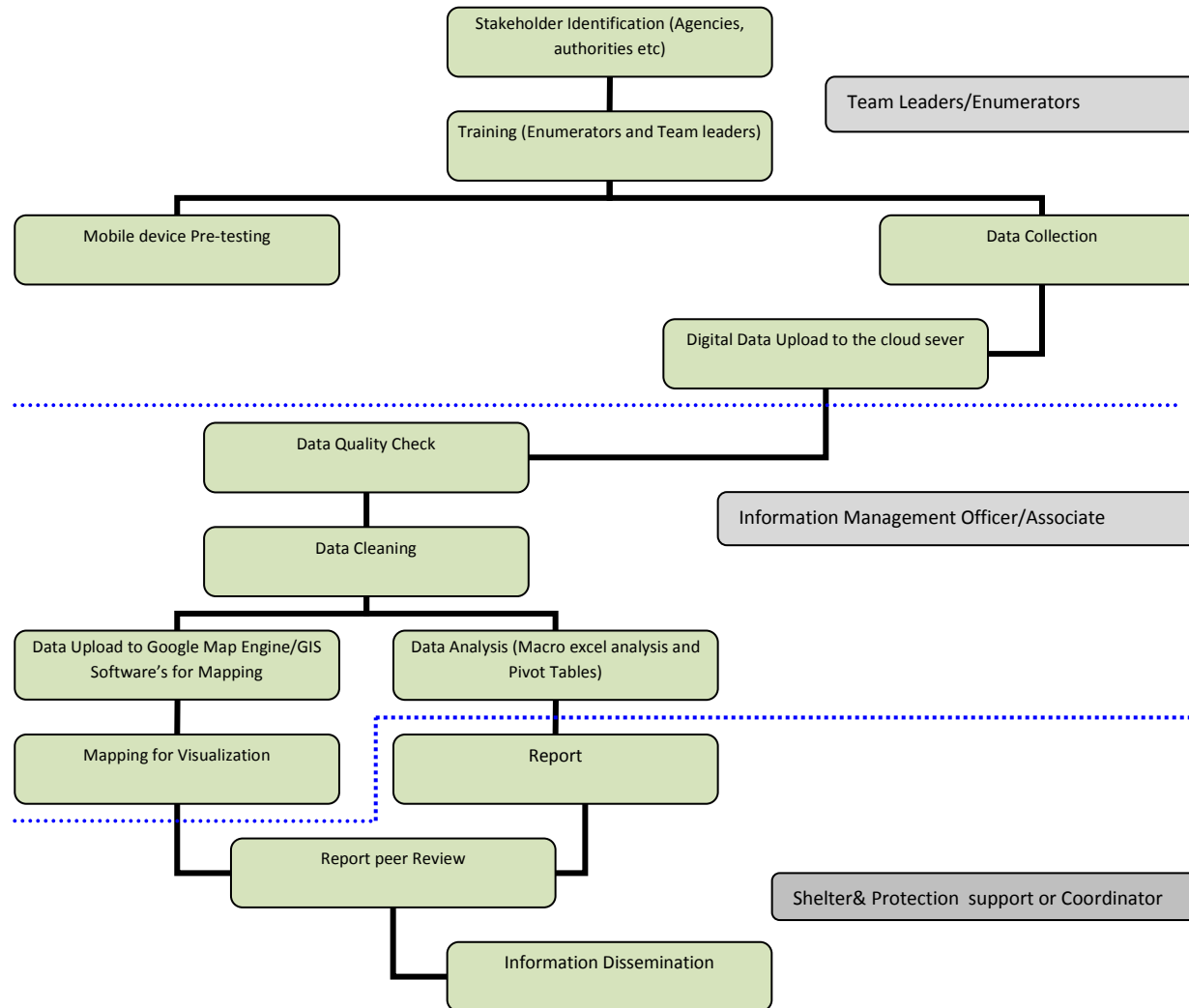
**FUNDS FOR ENUMERATORS  
TRANSPORT  
TRAINING FACILITIES  
UPLOADING CAPACITY  
COORDINATION AUTHORITIES**

---


# USER MANUAL

## INFRASTRUCTURE MAPPING EXERCISE

# AUTOMATION



# VISUALIZATION



**Somalia**  
ShelterCluster.org  
Coordinating Humanitarian Shelter

All Sites ▼  ➤  
Advanced Search

Home > Africa > Somalia

Home
About us
Global
Africa
Americas
Asia/Pacific
MENA
References

**Somalia**

Coordination

- Cluster Architecture and contacts
- ToR
- National Cluster
- Digital Platform
- Strategic Documents
- Somalia Maps

Technical Working Group

- Minutes and workplan
- Sustainable Shelter Solutions
- Housing, Land and Property
- Designing Shelters

Regional clusters

- Banadir, Lower Shabelle, Middle Shabelle
- Lower Juba, Middle Juba
- Gedo
- Bay, Bakool
- Galgadud, Hirran
- Mudug
- Nugaal
- Bari
- Somaliland

Technical Guidance

- Cluster Coordination Tools
- Cluster Standardized Tool
- Shelter and Settlement
- NFI

CAP

- CAP 2013-2015
- CAP 2012

## Somalia Shelter/NFI Cluster

CONTACT LISTS
SOF
Housing, Land and Property

DESIGNING SHELTER
MAPS
STRATEGIC DOCUMENTS

CAP2014
CHF
WEB PLATFORM

**Objectives of Shelter Cluster Somalia**

There are an estimated 1.1 million IDPs in Somalia. The needs of different categories of IDPs, i.e., people who have been IDPs for nearly two decades and those displaced more recently, vary. The cluster will continue to provide emergency assistance to newly displaced people affected by natural and man-made disasters (flood, fire, drought, conflict and evictions). It will distribute a minimum Non-Food Item kit and an Emergency Shelter Kit (if necessary) for those in need. It will also maintain the response capacity to distribute NFI minimum packages for 30,000 households or 120,000 people. This will ensure a timely response to sudden on-set disasters through prepositioned stocks held across Somalia. Programme design will take into account the specific needs of women and, where appropriate, women's dignity kits will also be distributed. As durable solutions are not able to be achieved for all protracted situations, there is also a need to start re-building the resilience of these communities.


The Shelter cluster strategy has three main pillars: **Emergency, Transitional and Durable Solutions**. A fourth pillar which specifically looks at the capacity building/coordination component has been included. Community participation and ownership are underlying themes which are embedded in all cluster activities.

To improve accountability, a digital platform (through mobile technology and GPS tracking) will be provided to all partners to enhance the information sharing, data management and analysis. The provision of a digital platform as a service to all shelter actors is also expected to enhance the accountability of all stakeholders. Post Distribution Monitoring (PDM) will form an integral part of implementation and where there is an unacceptably high risk of diversion of aid, activities may be suspended. Joint needs assessments will be coordinated to ensure that each regional shelter cluster produces an annual analysis of their respective IDP situation regarding shelter, NFIs and land tenure.

**Calendar**

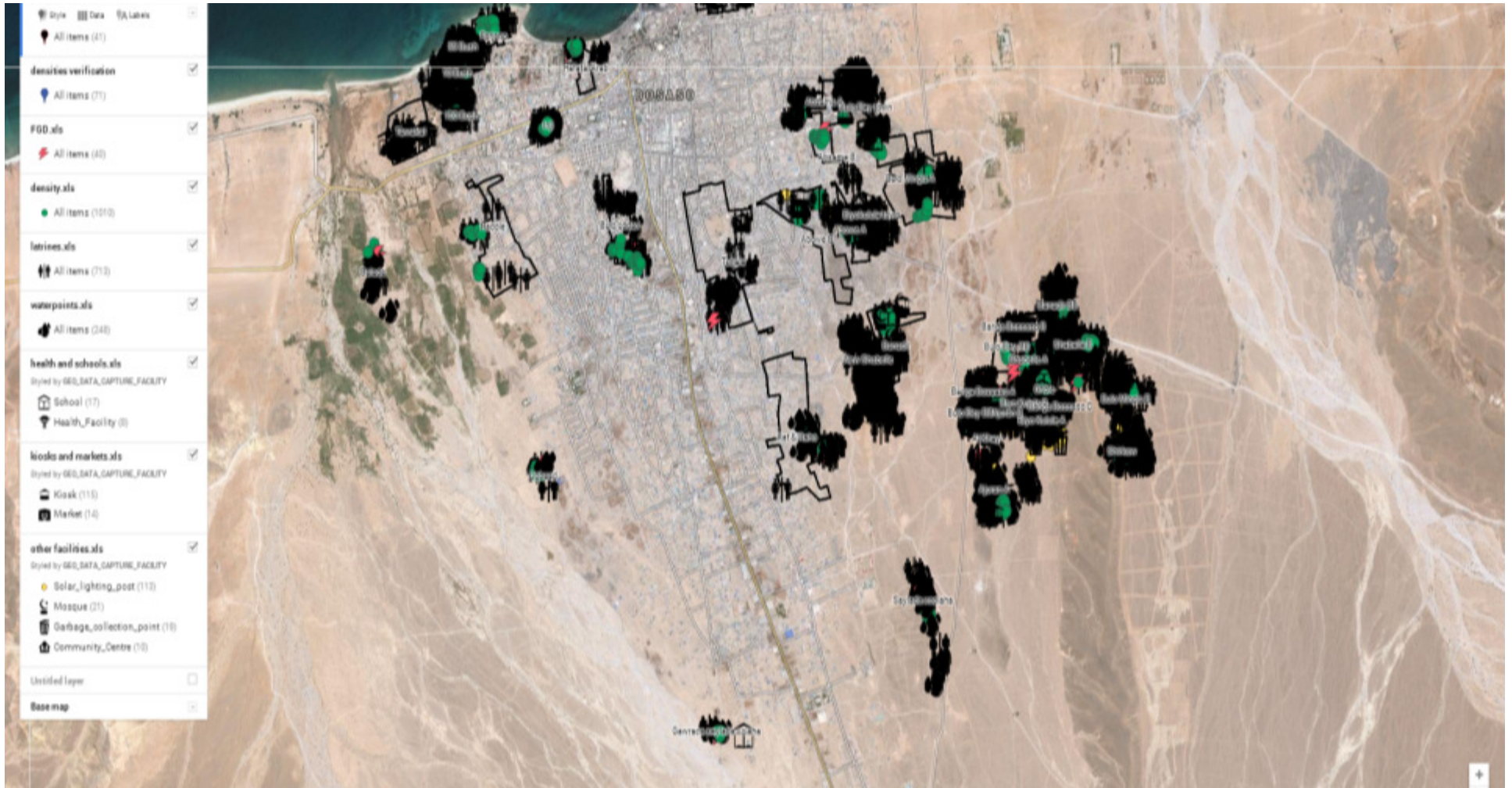
July 2014

M	T	W	T	F	S	S
30	1	2	3	4	5	6
7	8	9	10	11	12	13
14	15	16	17	18	19	20
21	22	23	24	25	26	27

 **Global Shelter Cluster**  
ShelterCluster.org  
Coordinating Humanitarian Shelter

30

# VISUALIZATION



# REPORTS/OUTPUTS

DATA  
SETS

ANNEX: PER  
SETTLEMENT

MAP PDF

MAP ONLINE  
(mapsengine)

OVERALL  
REPORT

ANALYSIS MAP  
(mango)

## GOOD EXAMPLES OF MAPPING

**In this example, the FGD is well located, the perimeter is well elaborated and pockets of density points can be seen, but not enough were captured.**

- Perimeter (251)
- Density (195)
- Facility (136)
- Focus\_Group\_Discussion (19)

**This is a concentration of 5 FGD. All settlements have less than 150 HHs. Please ensure to take one density check per settlement of at least 15-20 HHs.**



## GOOD EXAMPLES FROM MAPPING

**In this case, the perimeter is clear, the FGD is well located and the densities are well located.**

- 📍 Perimeter (251)
- Density (195)
- ◆ Facility (136)
- ⚡ Focus\_Group\_Discussion (19)

**According to the FGD, there are 600 HHs living there. Please take 4 density checks of minimum 15-20 HHs.**



---

## **4. WORKING GROUP (Sustainable Shelter Solutions Working Group):**

**The aim of the WG is to work  
towards improved accountability  
through a standardization process  
of the project cycle management  
**AND**  
improved sharing of information**

---

**THIS IS DONE BY BUILDING ON  
TOP OF EXISTING TOOLS AND  
GUIDELINES THAT ARE ALREADY  
ARE IN USE.**

# **SHELTER SITUATION IN SOMALIA**

**STRONG INGOs WITH LIMITED INFORMATION SHARING AND  
STRONG PERSONALITIES**

**MANY LOCAL NGOs WITH LIMITED KNOWLEDGE ON SHELTER  
LIMITED COMMUNITY PARTICIPATION**

**DIFFICULT ACCESS FOR UN/INGOs**

**BETTER ACCESS FOR LOCAL NGOs**

**A STRONG CONTRACTOR DRIVEN APPROACH**

**LIMITED UNDERSTANDING OF LAND TENURE**

**NO INFORMATION MANAGEMENT SYSTEMS**

**LIMITED SHARING OF LESSONS LEARNED**

**SOMALIA IS VERY DIVERSE AND NEEDS LOCALIZED SOLUTIONS**

---

**SOMALIA IS VERY DIVERSE AND  
NEEDS LOCALIZED SOLUTIONS  
BUT ACCORDING TO COMMON  
AGREED STANDARDS AND  
METHODOLOGIES**

---

**A SHIFT TOWARDS MORE SUSTAINABLE SOLUTIONS WITH A STRONG FOCUS ON TRANSITIONAL SHELTER**  
**(sustainable solutions definition paper)**



# DISCUSSIONS IN WG

Theme:	Description:
<b>NAME OF THE WORKING GROUP</b>	Sustainable Shelter Solutions Working Group
<b>Definition of Sustainable Shelter Solutions</b>	Come to an agreed upon definition of what the Durable Solutions framework/thinking means for the design and execution of Shelter projects
<b>Assessment Tools</b>	Design an assessment tool which facilitates proper targeting, a suitable shelter approach and response, and thus improved impact of the project
<b>Housing Land and Property</b>	Increase awareness of HLP issues in programme design; improve response to (possible) HLP difficulties; inform the working group's discussions surrounding Durable Solutions
<b>Market Analysis / Cash &amp; Voucher Based Interventions</b>	Increase awareness of cash based shelter intervention possibilities; improve the suitability, sustainability and impact of shelter programmes by using innovative approaches to generate shelter / settlement ownership; create concrete tools that facilitate cash / voucher based shelter interventions for agencies that lack the expertise
<b>Monitoring and Evaluation</b>	Improve the effectiveness of future shelter programming by making impact assessment possible; development of an impact monitoring system / methodology and tool; facilitating impact monitoring by developing / procuring a mobile technology monitoring system and equipment
<b>Typologies</b>	Improving programme design by offering a broad selection of shelter typologies and lessons learned
<b>Approaches</b>	Improving the impact, sustainability and durability of the shelter intervention by looking at different approaches to project implementation with a focus on an owner driven approach. Contractor driven versus Owner driven approaches
<b>Decision Making Tree</b>	Development of a decision making tree which can improve agencies targeting and thus shelter intervention effectiveness and impact; guidance on the type of intervention regarding different situations incorporating all of the items discussed during the Sustainable Shelter Solutions Working Group

---

# OUTPUTS OF THE WORKING GROUP

TO PRODUCE BOTH **POLICY AND PRACTICAL DOCUMENTS** TO IMPROVE THE ACCOUNTABILITY OF ALL SHELTER CLUSTER MEMBERS.  
ALL WORKING GROUP OUTPUTS WILL BE USED TO IMPROVE THE **STANDARD OPERATING FRAMEWORK**

# DEFINITION PAPER ON SUSTAINABLE SOLUTIONS

Sustainable shelter approaches need to be addressed as a holistic package and needs a strong integrated approach with all other sectors (WASH, education, health, etc.).





# **ASSESSMENT TOOLS / MAPPING**

- **REACH = BACKBONE (3-TIERED APPROACH)**
- **TRANSFER OF KNOWLEDGE FROM REACH /SHELTER CLUSTER TO PARTNERS**
- **SHELTER CLUSTER WILL START TRAINING SESSIONS FOR PARTNERS**
- **STATIC VERSUS DYNAMIC INFORMATION**
- **STANDARDIZE THE ASSESSMENT TOOLS AND THE GUIDANCE NOTES**
- **REACH TO CONTINUE BASE LINE ASSESSMENTS THROUGH CAPACITY BUILDING OF THE PARTNERS (Luuq, Beletweyne...)**
- **PARTNERS WILL START USING THE PLATFORM FOR OWN NEEDS ASSESSMENTS**
- **DATA MANAGEMENT NEEDS TO BE IMPROVED**

# MONITORING & EVALUATION FRAMEWORK

- PART OF A REACH PROJECT FINANCED BY CHF and ECHO
- WORKING GROUP = TESTING UNIT
- BUILD ON TOP OF EXISTING M&E FRAMEWORKS IN USE BY PARTNERS
- DECIDE ON TIME-FRAME FOR MINIMUM MONITORING REGARDING SHELTER PROJECTS
- STANDARDIZE THE TOOLS, METHODOLOGIES AND THE GUIDANCE NOTES (including the development of practical tools)
- REMOTE MONITORING (MOBILE TECHNOLOGY)
- DATA MANAGEMENT (DIGITAL PLATFORM)
- IMPACT MONITORING

---

# KEYWORDS AND DEFINITIONS

**DECISION MAKING TREE**

**MARKET ANALYSIS**

**OWNERSHIP**

**LAND TENURE**

**LIVELIHOODS**

**INTEGRATED PROGRAMMING**

---

# 5. TRAININGS AND WORK PLAN

# **OBJECTIVES FOR 2014**

## **STRONG FOCUS ON CAPACITY BUILDING**

- \*HLP-mainstreaming
- \*M&E framework and training
- \*Field trainings on the mapping exercise and tools
- \*Training of trainers / Workshop
- \*Protection/GBV mainstreaming

## **SECOND TRAINING FOR SHELTER CLUSTER COORDINATORS**

EXPANSION OF THE **DIGITAL PLATFORM** TO THE PARTNERS

CONTINUATION OF THE INFRASTRUCTURE **MAPPING EXERCISE**

(ALL SOMALIA BY DECEMBER 2014)

SHELTER CLUSTER **FIELD LEVEL**: SMALLER TRAINING MODULES  
ON THE WEB PLATFORM, MAPPING METHODOLOGY, M&E