

# Somalia Shelter Global Evaluation

**REACH** Informing  
more effective  
humanitarian action

Shelter Cluster Working Group Presentation

UNHCR ,Nairobi

28 Nov 2014

## Background and Purpose

*To review shelter response achievements and challenges in meeting the immediate, medium and long term shelter needs of the affected population and making recommendations on future coordination and shelter response respectively.*

**The shelter response evaluation covered three different phases of the response:**

- Emergency phase will be evaluated in Mogadishu.
- Transitional phase will be evaluated in the Bossasso.
- Permanent phase will be informed by the REACH Galkayo evaluation performed in June 2014.

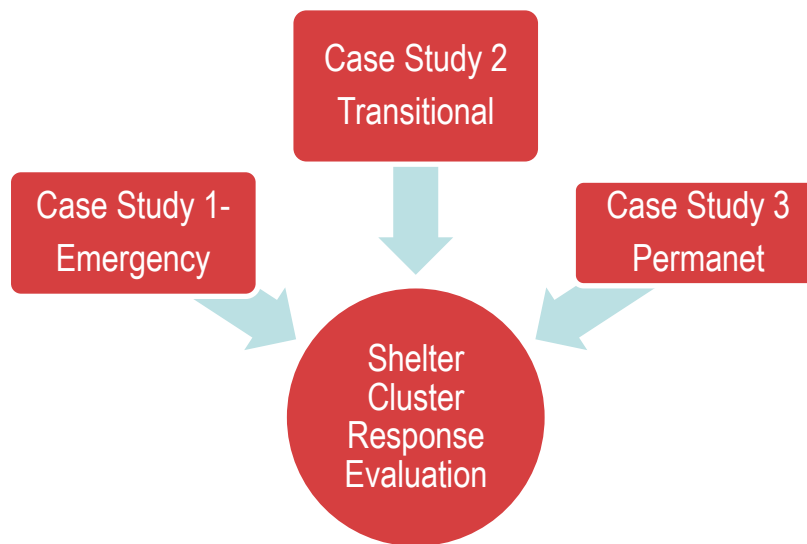
# Evaluation Process

- 1) REACH shared an evaluation terms of reference for review, feedback.
- 2) Assessment / Data Collection: REACH hired and trained staff from implementing agencies to collect quantitative mobile data piloting M&E tools and methodologies.
- 3) Jointly, a consultant for the Global Shelter Cluster concurrently collected qualitative data from cluster partners / stakeholders
- 4) Sharing preliminary findings from the quantitative household data with the SAG and implementing partners through a validation workshop and factsheets to validate findings
- 5) Evaluation of validated quantitative and qualitative data into a series of case studies and a final report covering the shelter response across three locations and shelter response in three locations

# Background and overview

## Final Report / Case Studies:

Combined the validated quantitative and qualitative data into a series of case studies and a final report covering the shelter response across three locations and shelter response modalities in Somalia. These case studies and report included comparative analyses between data collected. The comparative analysis included household data as well as comparisons of numbers and types of shelter and facilities in the intervention area.



# Case Study Outline

- **Background** – general information to set the scene
- **Summary of results observed**
- **Rationale** – why did the cluster undertake this activity (e.g. joint assessment/monitoring/evaluation)
- **Process** –What key steps were followed? E.g. consultation with cluster partners, training, involvement of local government, gatekeepers, etc.)
- **People and resources involved** – what human and financial resources were needed, and who was involved? partners? Resources contributed and trainings
- **Challenges and limitations** – what challenges, if any, did you have to overcome? (E.g. security, access? Inequitable participation be women in process?)
- **Results observed** – what results have been observed? Shelter results in terms of key indicators agreed, e.g. quantity/quality/people staying longer in settlement/?
- **Lessons learned** – what has worked particularly well in terms of shelter and settlement? What could cluster do differently next time?
- **Additional information**

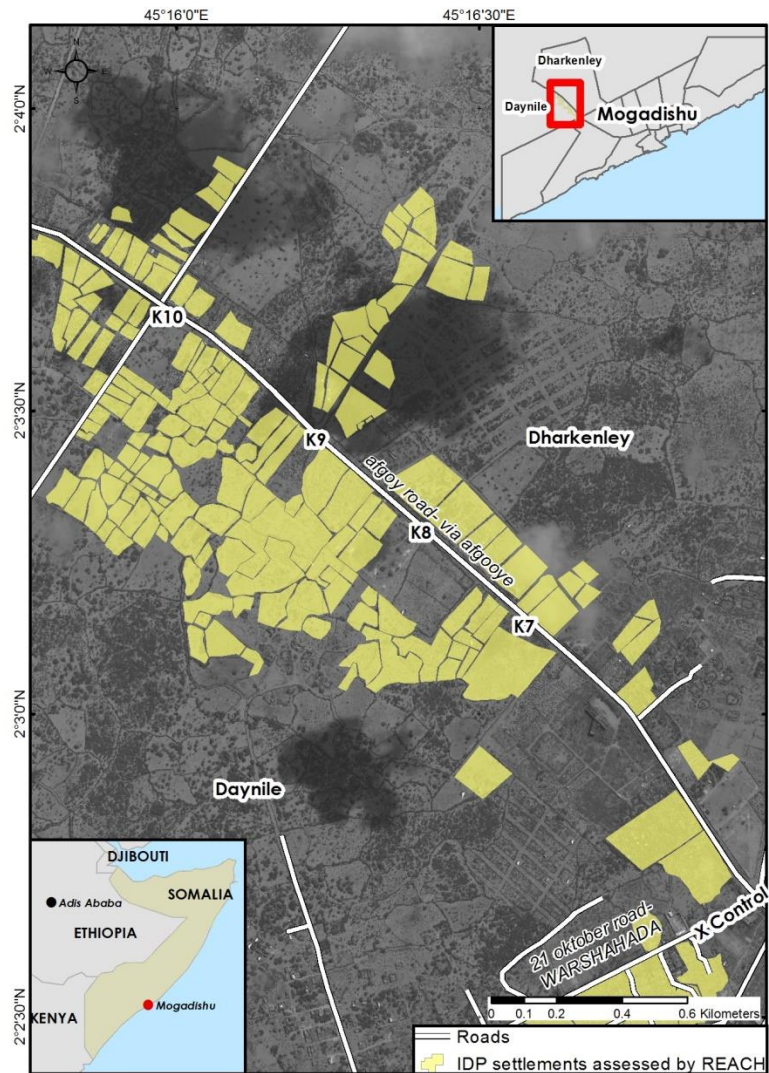
# Challenges and Limitations

**Lack of access:** *due to security / travel and transportation issues, some areas of Somalia may be out of reach for both evaluations.*

**Security issues:** *due to Somalia volatile context, security issues may occurs on a day by day basis disrupting the opportunity to travel, held meetings, collect data with beneficiaries.*

**Loss of corporate memory & Staff turnover:** *staff turnover, especially amongst international staff, is quite common in Somalia. Therefore memories and experience may get lost as the staff who implemented shelter response and attended coordination mechanisms is not present anymore in the country*

# Mogadishu – Emergency



# Mogadishu

## **Location:**

X-control to K13 Danyile and Darhkenley

## **Data Collection:**

Conducted in October lasting approximately 5 days in each location. Employed 30 enumerators; 5 TIs and 25 Enumerators

## **Partners:**

DKH, DBG, DRC, HIJRA, HINNA, IR, MURDO, and NRC.

**Projects:** EAP, NFI and Voucher

## Summary of Findings - Mogadishu

Impact of the emergency shelter response led to better **outcomes and successful in providing basic shelter** in the evaluated area through the provision of basic materials and NFIs.

Expenditures on shelter materials and household items have decreased. This resulted in:

- Additional income for expenses beyond basic shelter – shelter improvements, additional shelter construction, as well as other non-shelter expenses.
- Change in shelter materials; 72% of households used cloth and rags for the shelter walls and roofs, while in 2014, 73% of households were observed to be using plastic sheeting.
- Increased perception of security while in the shelter

Critical failure by the humanitarian community in Mogadishu to provide sufficient services to the evaluated settlements:

- Increased number of households are now further from latrines or water points and exposed to increased security risks. This is especially an issue for women and children, who are often tasked with the duty of collecting water or are forced to use non-gender segregated latrines at night.
- Of IDP perceptions of safety and security within the settlements has been diminished due to greater distances from critical infrastructure as well as other reasons.

# Summary

As the humanitarian community begins to decide the next steps emphasis should be placed on the construction of critical services in proximity to all IDP shelters and follow standard protocol to ensure safety and security of all inhabitants



# Results

## ***Shelter Type & Materials:***

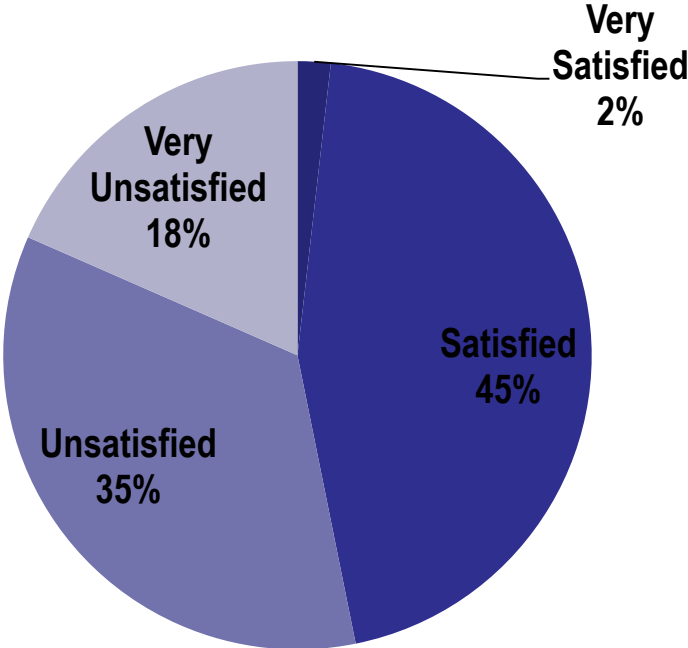
- 117% increase in total estimated shelters from 12,375 to 26,798. Largest increase among “*buul* structures” – 130% increase. [MAP](#)
- 73% of shelters were observed to be using plastic sheeting in 2014 vs 72% using cloth and rags in 2013

## ***Shelter Source***

- Increase in reported humanitarian support received, 7% to 40%, leading to a decrease in household income spent on shelter expenses.
- 20% of households report shelter items and materials as a top three expenditure in 2014, compared to 68% in 2013.

# Shelter Assistance Satisfaction

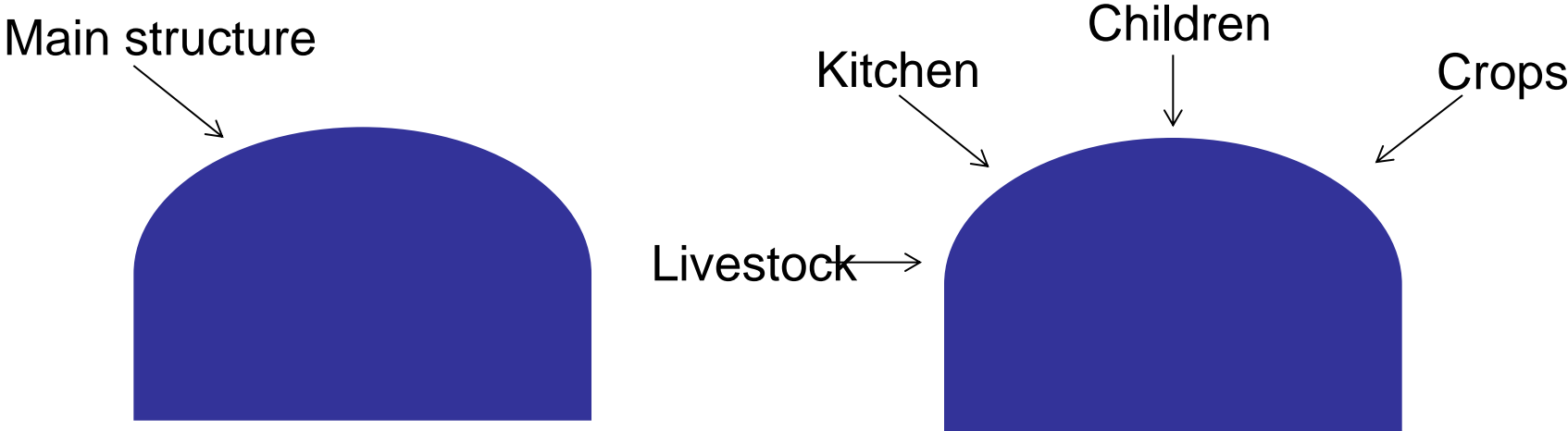
**18% of households report being very unsatisfied with the assistance they received.** On a four-point scale from very unsatisfied to very satisfied, most respondents report being either satisfied (45%) or unsatisfied (35%).



# Shelter Uses

**Increase in average structures ( 1.7 to 2) per plot from 2013 to 2014** – Main use of second shelter was reported 39% report having a structure used for a kitchen, while 32% report having a structure intended for children.

A small proportion of households report that they are using their plot of land for growing crops (11%) or holding livestock (10%). Increase from 2013



# Results

## *Shelter Improvement*

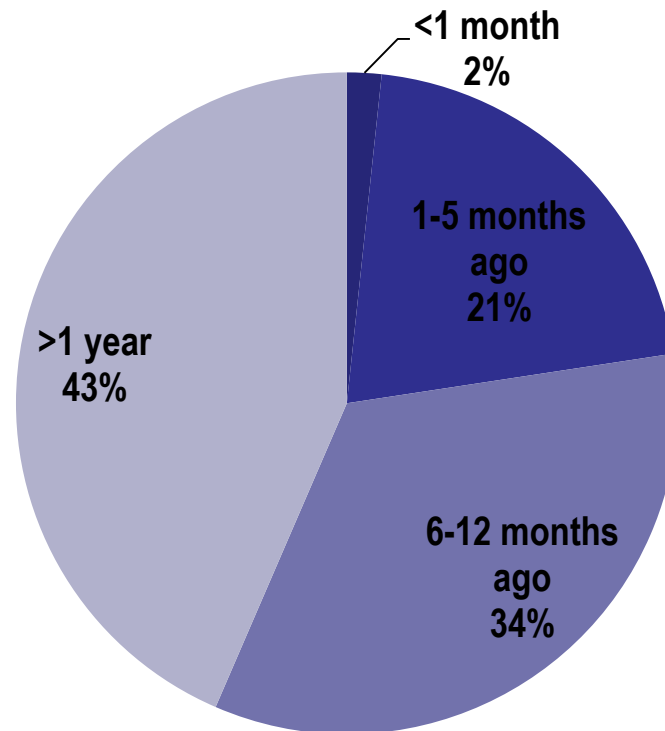
- 31% of households reported temperature as the primary concern related to their shelter compared to 93% of households reporting as much in June 2013.

- 84% of households reported having upgraded their shelters recently, including 92% of which that report extending the size of their shelter.



## Occupancy and Household movement

43% of households settled in the assessed settlements over a year ago, with 34% reporting that they arrived 6-12 months ago.



## Results

**ACCESS TO SERVICES & FACILITIES:** Construction of critical infrastructure such as latrines and water points has not kept pace with the rapid population growth of the evaluated area, leading to critical shortages of key services:

- 34% of shelters are outside this 50 metre proximity buffer. [Map 2](#)
- 72% of households use water tanks as their main source of water with an average walking time to the **water point of about 20 minutes.** [MAP 3](#)

# Results

## **SAFETY, PROTECTION & SECURITY**

- IDP households perceive an increase in safety between 2013-2014 while in the shelter while perception of safety outside the shelter has decreased.
- Decrease in fear of physical safety: 25% in June 2013 to 19% in 2014.
- Increase in households that fear for their physical safety now perceive the market to be unsafe, 21% to 74% and latrines 29% to 51%.
- Fewer shelters in 2014 have a lock (23%) than in 2013 (66%), yet the perception of security has increased.