

Shelter Cluster Recovery and Reconstruction Working Group

25th November



Meeting Agenda

1. Shelter Cluster Update
2. MoUD Address
3. RRWG Updates
4. AOB



SHELTER CLUSTER UPDATE



Winterisation update

24/11/2015



Winterisation guidance

https://www.sheltercluster.org/response/nepal-earthquake-2015



Search site

Search

HOME

GLOBAL

CURRENT OPERATIONS

REGIONS / COUNTRIES

ABOUT US

RESOURCES

In Nepal

Nepal Earthquake 2015

Dashboard

Documents (363)

Events (1)

HUBS –

- Western Hub - Dhading, Gorkha, Makawanpur
- North Eastern Hub - Sindhupalchok and Dolakha
- Central Hub - Kathmandu Valley, Rasuwa, Nuwakot
- South Eastern Hub - Kabhrepalanchok, Sindhuli, Ramechhap and Okhaldhunga,

WORKING GROUPS –

- Technical Coordination

FEATURED DOCUMENTS –



WINTERISATION GUIDANCE AND RECOMMENDED PACKAGE_NOVEMBER 2015

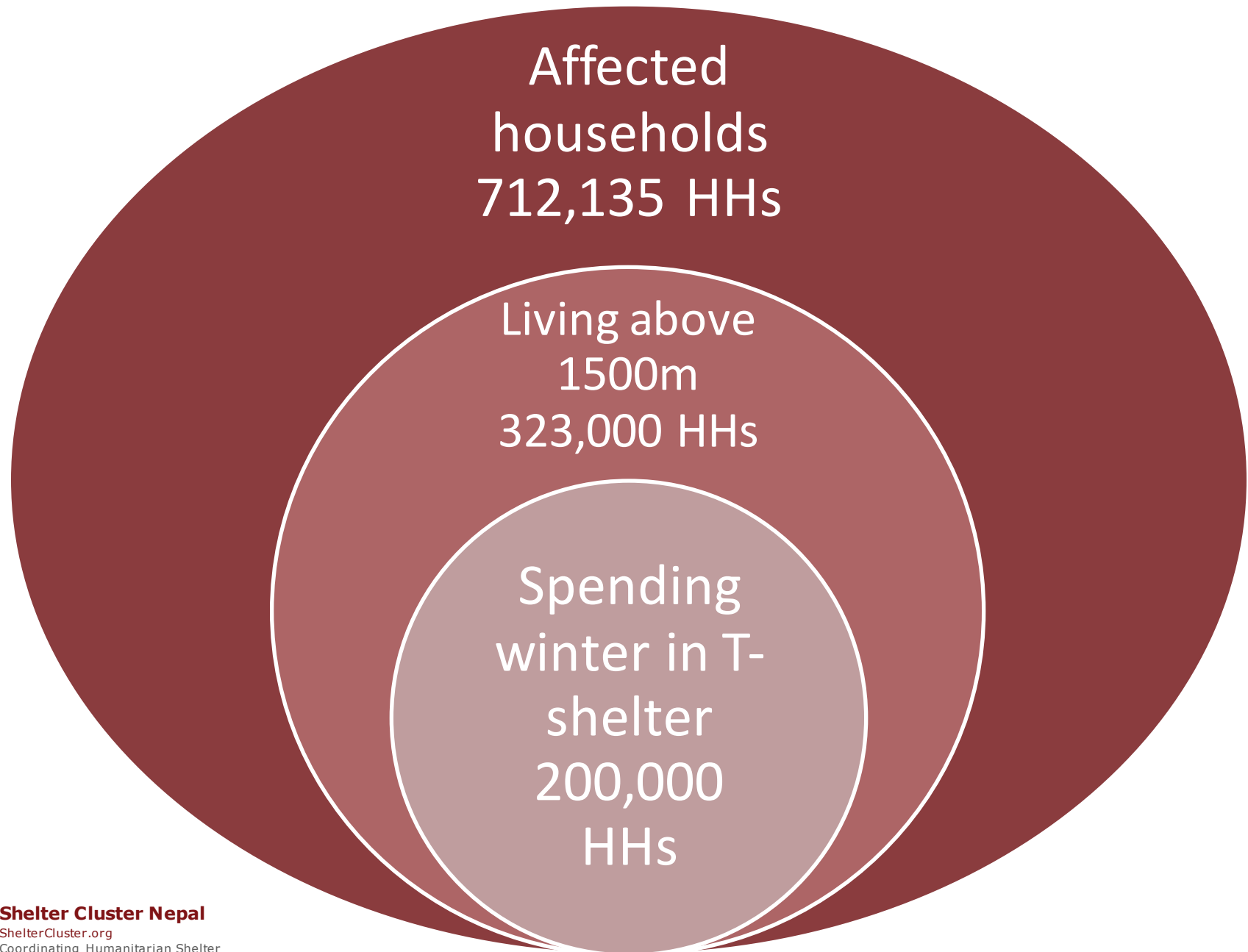
[0.65M] PDF

OVERVIEW –

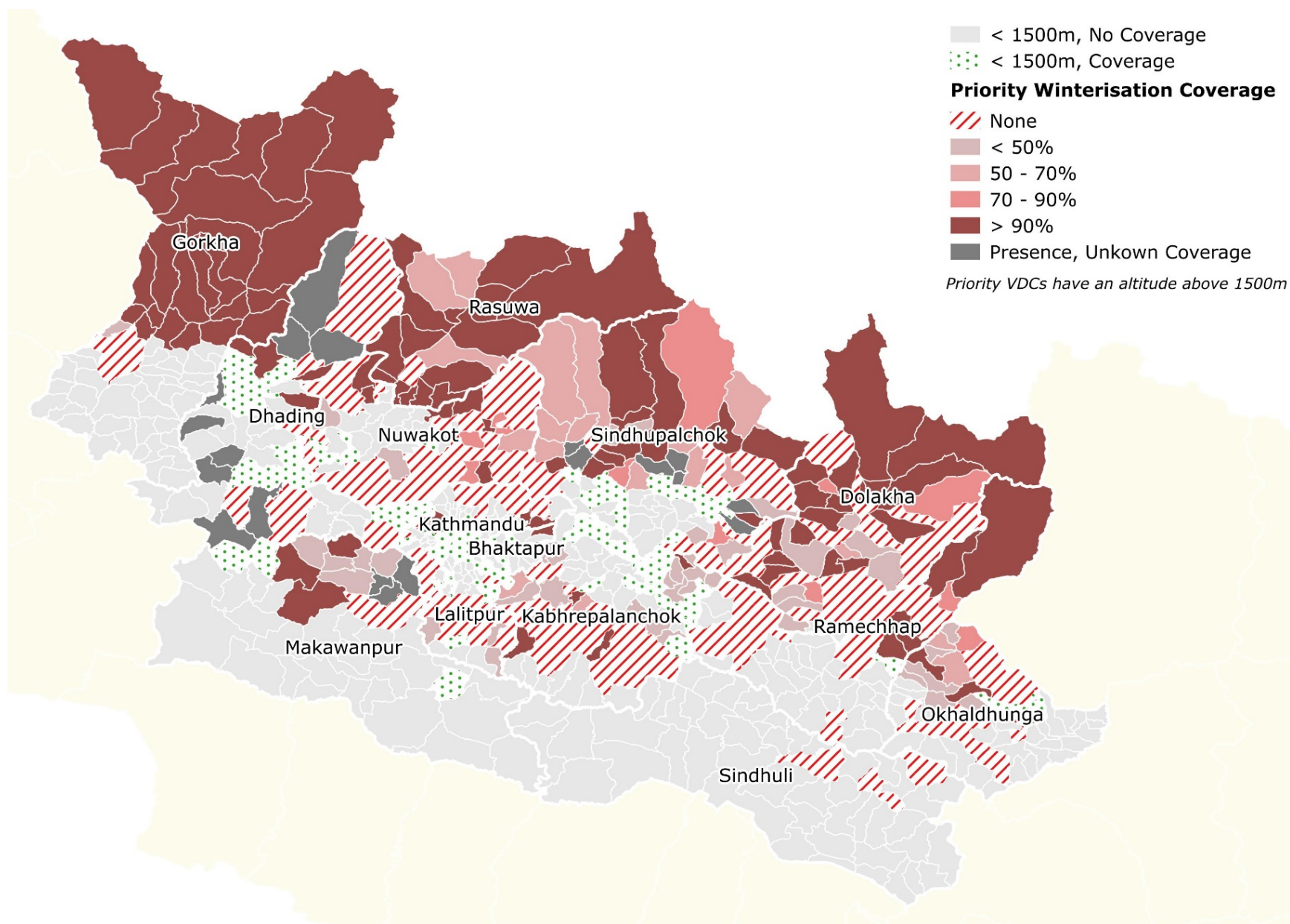
The two earthquakes in Nepal, April 25th and May 12th respectively, left over half a million homes destroyed and many additional households damaged. The Nepal Shelter Cluster, co-led by the Department of Urban Development and Building Construction (DUDBC), the International Federation of the Red Cross (IFRC) and Nepal Red Cross Society (NRCS), is composed of over 120 partner agencies involved in shelter interventions. The cluster works very closely with these partners to ensure coordination, technical support, and high-level information management between all bodies.



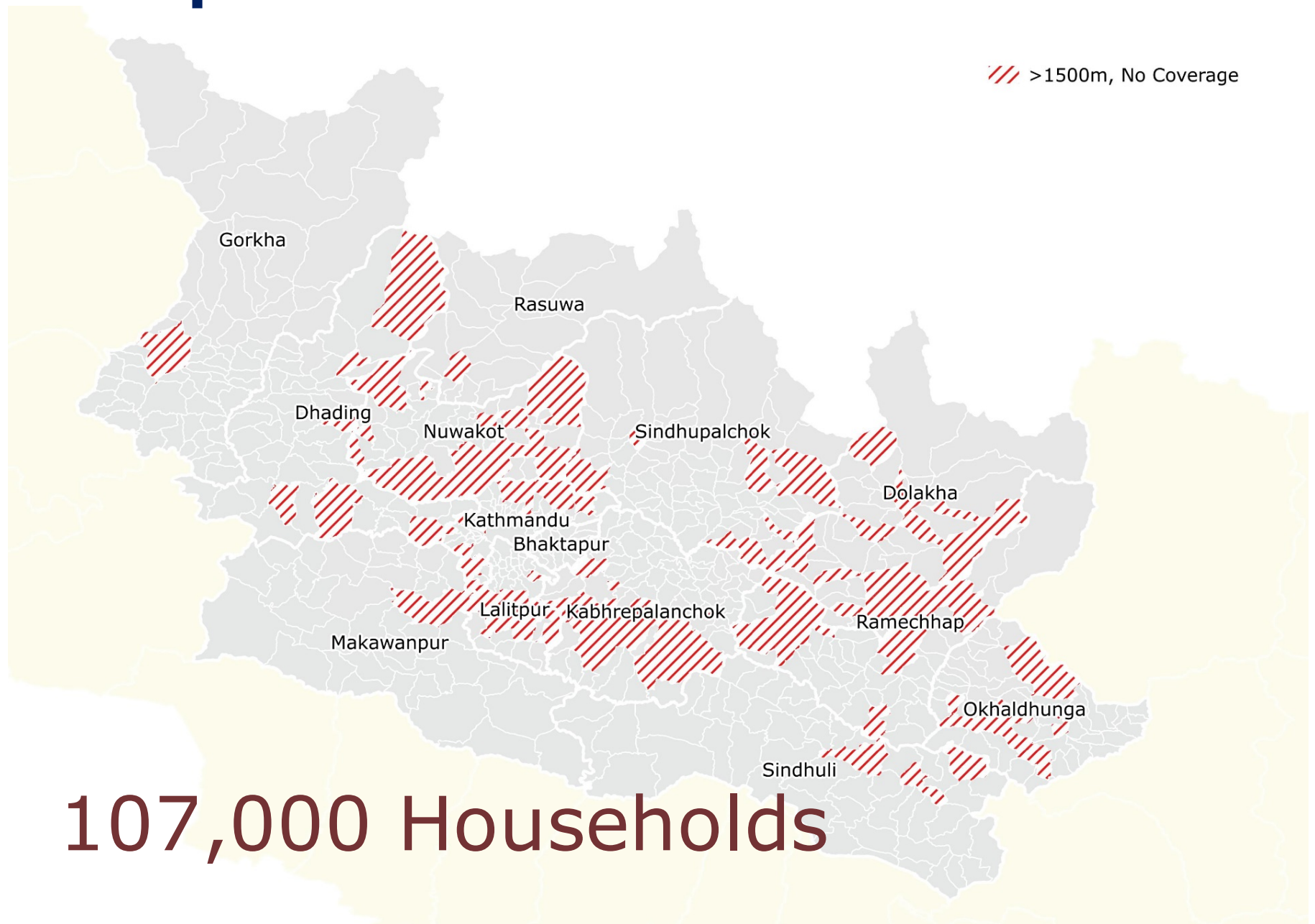
Winterisation needs



Winterisation coverage



Population of Concern



107,000 Households



Latest figures

- **200,000** households with planned/ongoing distributions
- **65,000** in non-priority VDCs
- **107,000** not covered in priority VDCs

For more information check out our district profiles:

<http://www.sheltercluster.org/library/district-profiles>



District	<1,500m	>1,500m	Total
Bhaktapur	3,656	4,286	3,055
Dhading	12,159	4,392	16,182
Dolakha		28,916	21,560
Gorkha		16,931	17,568
Kathmandu	446	5,170	482
Kavrepalanchok	11,985	6,603	17,961
Lalitpur	5,596	51	2,637
Makwanpur	1,830	4,125	5,955
Nuwakot	8,700	8,195	16,895
Okhaldhunga	836	3,715	4,155
Ramechhap	712	3,452	3,244
Rasuwa		19,045	15,419
Sindhupalchok	19,298	30,235	46,219
Total	65,218	135,116	200,334



Interactive pivot table

← → ↻ nepalsheltercluster.org/thetablesarepivoting/winter/table/winter.html

Table ▾

Sum ▾

target_hh ▾

above_1500 ▾

dist_code ▾

hlcit_code ▾

vdc ▾

priority ▾

num_hh_damage ▾

pct_damage ▾

target_hh ▾

in_db ▾

census_hh_dmg ▾

map_cd ▾

district ▾

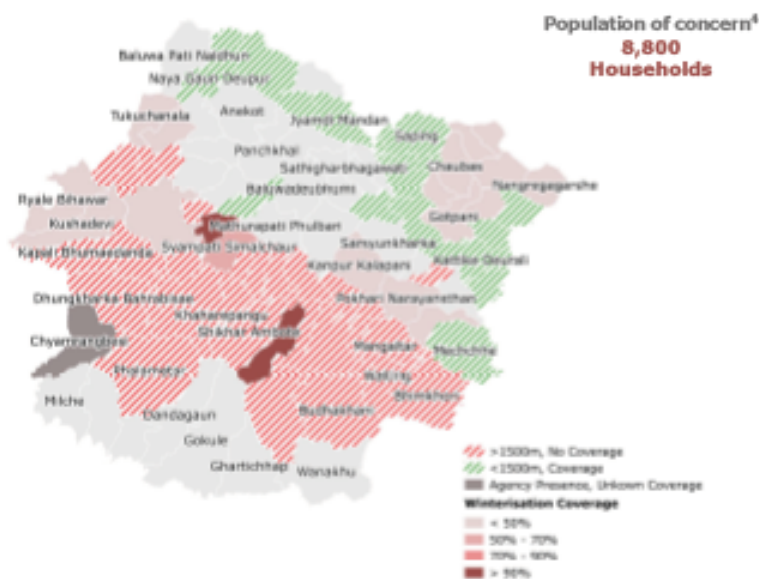
	above_1500	False	True	Totals
district				
Bhaktapur		3,656.00	4,286.00	7,942.00
Dhading		12,159.00	4,392.00	16,551.00
Dolakha			28,916.00	28,916.00
Gorkha			16,931.00	16,931.00
Kathmandu		446.00	5,170.00	5,616.00
Kavrepalanchok		11,985.00	6,603.00	18,588.00
Lalitpur		5,596.00	51.00	5,647.00
Makwanpur		1,830.00	4,125.00	5,955.00
Nuwakot		8,700.00	8,195.00	16,895.00
Okhaldhunga		836.00	3,715.00	4,551.00
Ramechhap		712.00	3,452.00	4,164.00
Rasuwa			19,045.00	19,045.00
Sindhupalchok		19,298.00	30,235.00	49,533.00
Totals		65,218.00	135,116.00	200,334.00

<http://nepalsheltercluster.org/thetablesarepivoting/winter/table/winter.html>

District profiles

Kabhrepalanchok

47,744¹ Households live above 1,500m	73,647² Houses were damaged by the Earthquake	55%³ of the families live in Temporary Shelter	26,259³ HHs live in t-shelter above 1,500m
---	--	---	---



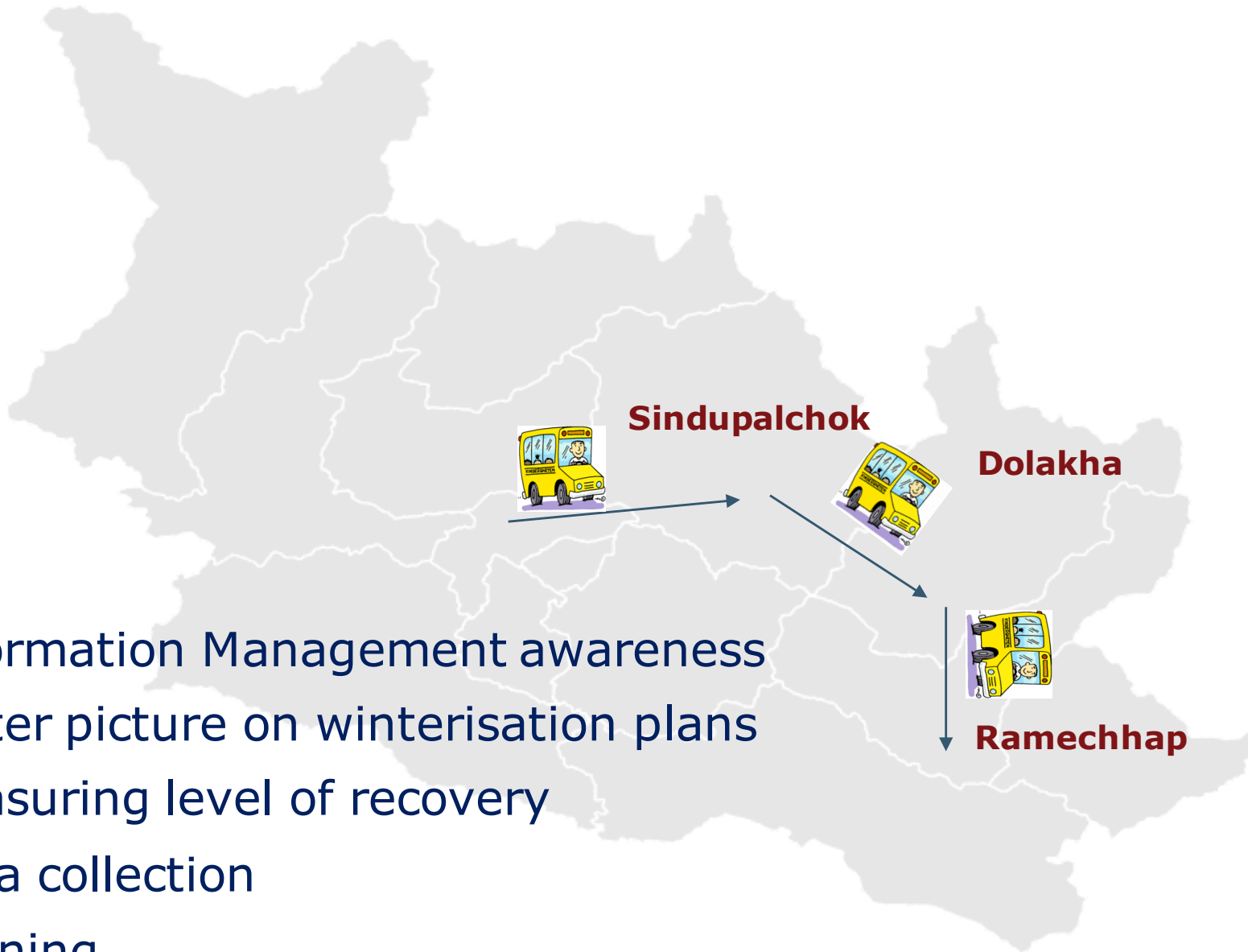
Current Situation

- CDRA has distributed 50 blankets to the elderly and 50 packages of baby clothes in 2 VDCs: Mahadevsthan 3 and Chaurbesi 2 & 3.
- CRED plans to distribute in kind items to 2000 HHs in VDCs situated above 1500m.
- SPSWO plans to distribute in kind to 6906 HHs in 12 VDCs.
- Due to the fuel crisis, many winterisation materials have not yet arrived in the district.

Background

Almost 92% of all HHs have been damaged. Cash and CGI was distributed by agencies to 16,172 HHs in total, which is much less than the required total. To alleviate this gap, the government has distributed NPR 15,000 to all totally damaged HHs.

Shelter Cluster IM goes on tour



Information Management awareness

Better picture on winterisation plans

Measuring level of recovery

Data collection

Training

MoUD ADDRESS



RRWG UPDATES



PASSA ToT

- PASSA ToT undertaken in Nepal in November 2015
- 2 Facilitators from IFRC
- 35 Participants from 23 Organisations
- PASSA Manual already translated in Nepali through Habitat for Humanity



PASSA in Nepal for Earthquake Recovery

- Now PASSA Working Group established through Shelter Cluster
- PASSA Technical Share Folder set up through Dropbox for Nepal Community of Practice.
- Now developing context specific training cards – CARE taking lead.
- Partners now developing projects and programmes to integrate PASSA.
- Second ToT from 7-11 December 2015



ToT for Training Masons

- Delivered by NSET, for training of existing masons
- 2nd ToT taking place from 23rd to 29th Nov
- 30 participants, from 15 organisations, taking part
- Organisations can continue to register interest in participating in upcoming ToTs by emailing tech2.nepal@sheltercluster.org



ToT for Training Masons Contd.

- Three step process to become trainer:
 - Complete ToT
 - Observe delivery of training by experienced trainers
 - Deliver training with support of experience trainers

- Briefing on training process for senior programme staff will be organised soon



DUDBC Housing TWG

- **Design Catalogue for Reconstruction of Earthquake Resistant Houses** has been published
- Available on DUDBC website here:
<http://www.dudbc.gov.np/download/cat/13>
- Please note that it is not mandatory for households to follow these designs; compliance with the national building codes is guiding principle



IEC 10 Key Messages

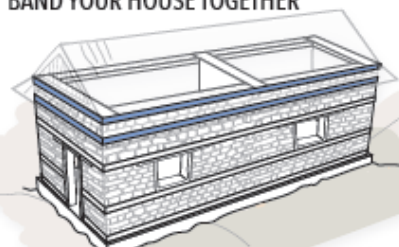


Well built **STONE** houses can better withstand earthquakes. Here are **10 TIPS ON HOW TO BUILD BACK SAFER**

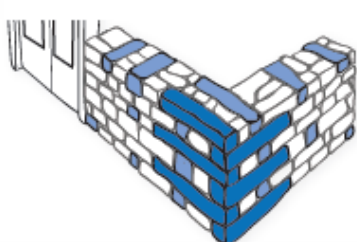
1 GET TECHNICAL ADVICE BEFORE YOU START



2 BAND YOUR HOUSE TOGETHER



3 TIE YOUR HOUSE TOGETHER WITH TIE STONES



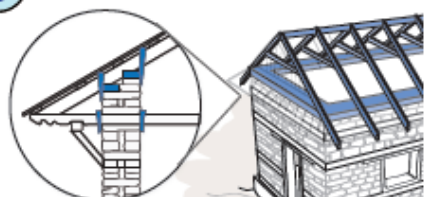
4 BUILD YOUR HOUSE WITH GOOD MATERIALS



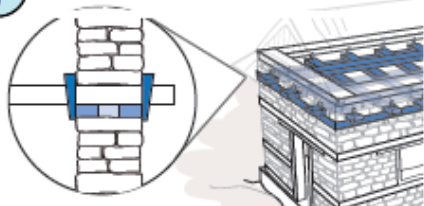
5 TIE YOUR GABLES UP



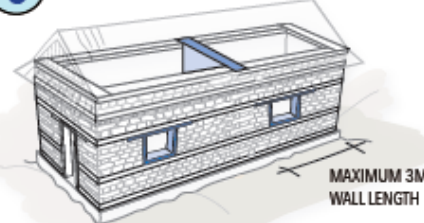
6 TIE YOUR ROOF DOWN



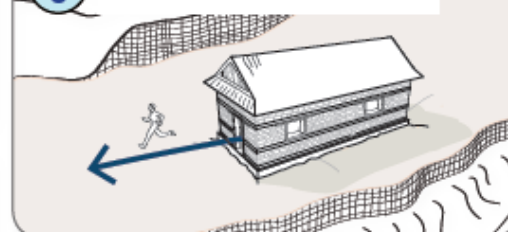
7 TIE YOUR FLOORS TO YOUR WALLS



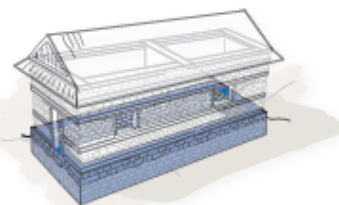
8 BUILD A STRONG SHAPE



9 HAVE A SAFE SITE AND A SAFE EXIT



10 BUILD ON STRONG FOUNDATIONS



Government of Nepal
Ministry of Urban Development
Department of Urban Development
and Building Construction



Shelter Cluster Nepal
ShelterCluster.org
Coordinating Humanitarian Shelter

10 KEY MESSAGES -
A VISUAL INDEX
VERSION 2- 09/OCT/2015



VDC Level Mapping

- Agencies undecided on districts please discuss with KTM shelter cluster



AoB

- Sign up for [RRWG mailing list](#) and [SC mailing list](#) on SC website

