

Shelter Cluster Recovery and Reconstruction Working Group

30th September



Meeting Agenda

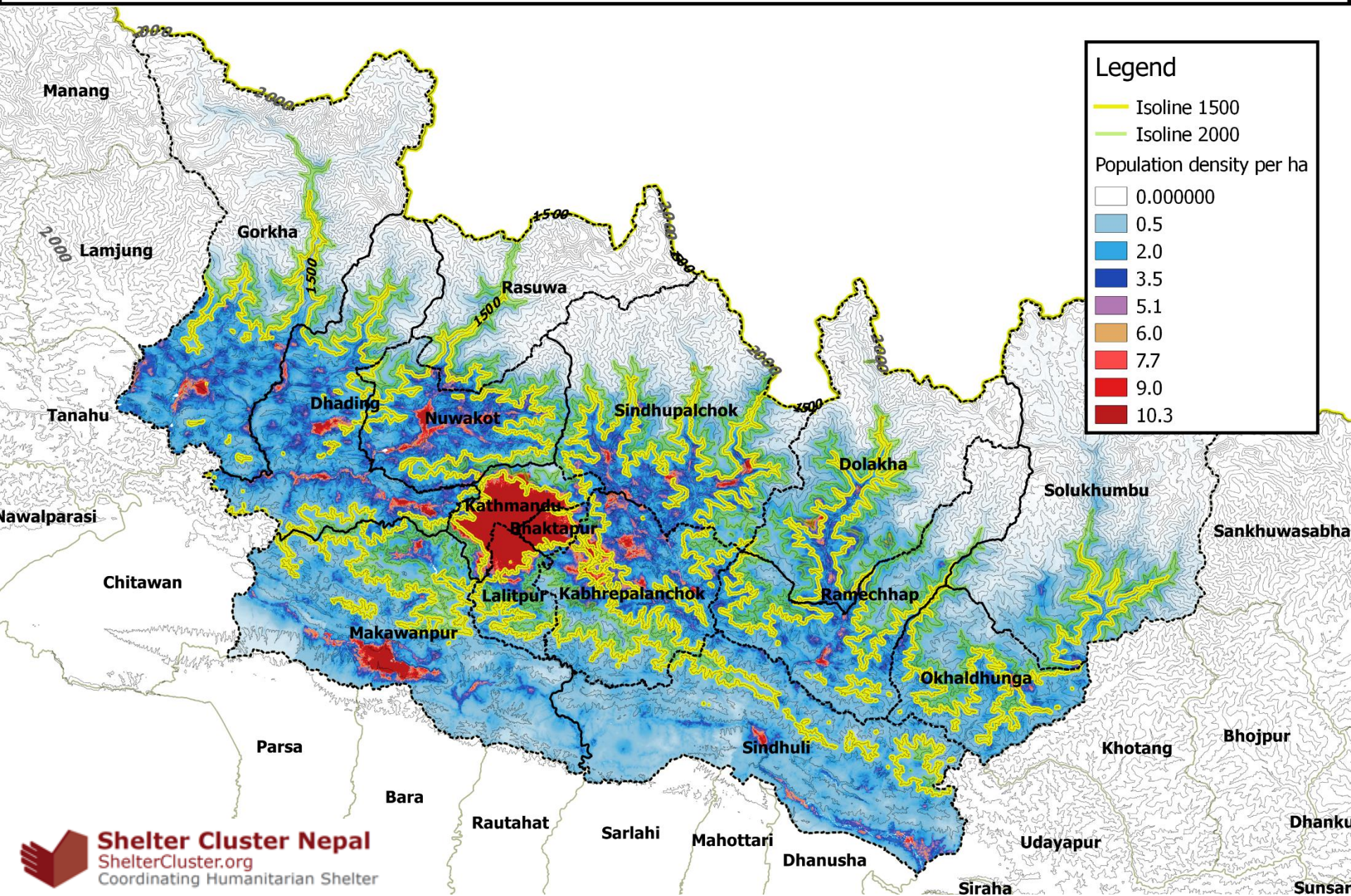
1. Shelter Cluster Update: Winterisation and Coverage
2. Housing Recovery and Reconstruction Platform (HRRP) Coordination Structure
3. Q&A Document
4. Draft RRWG Workplan
5. RRWG Workplan Updates
6. Next Steps
7. AOB



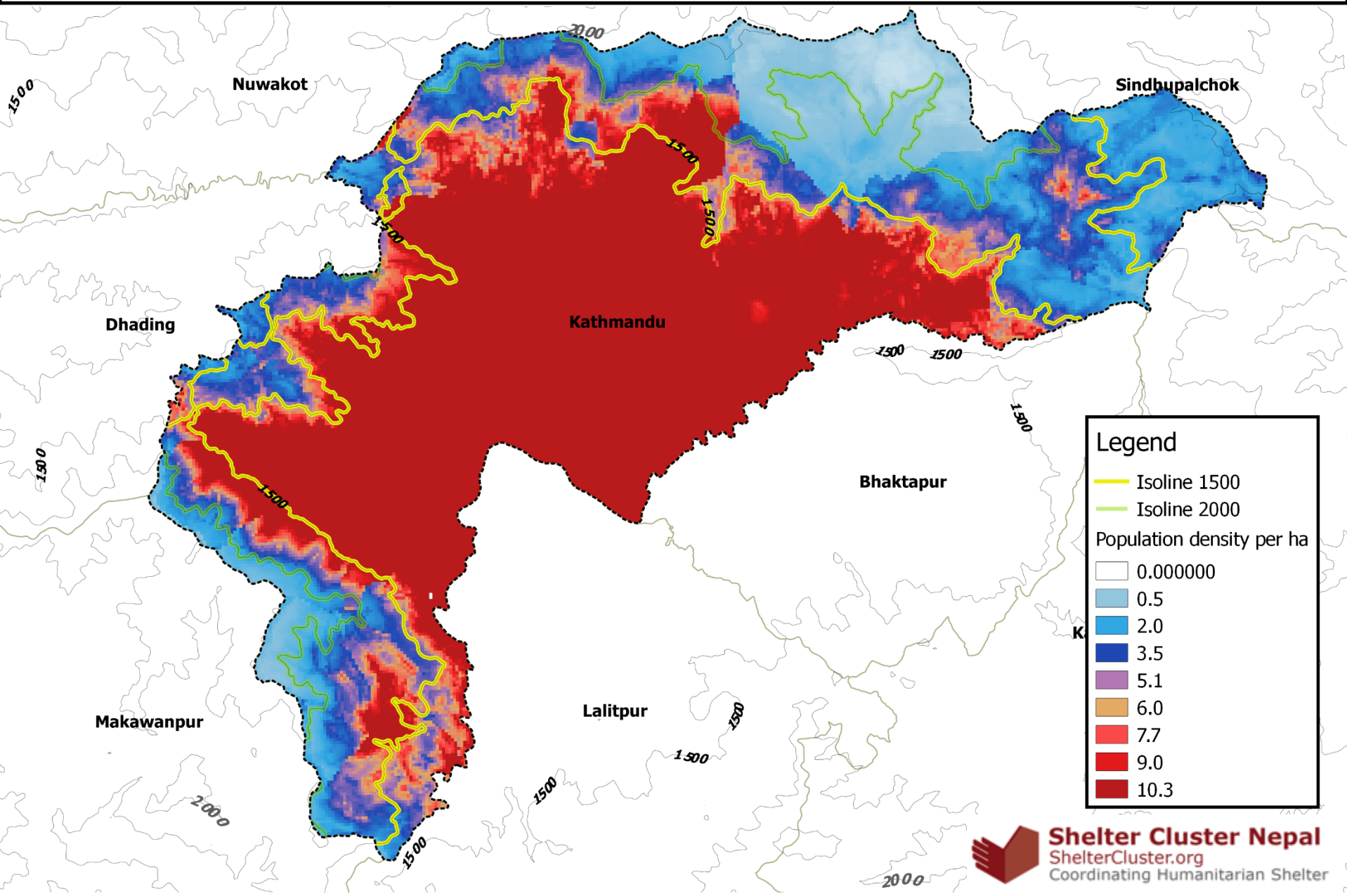
SHELTER CLUSTER UPDATE: WINTERISATION AND COVERAGE



Elevation and population density in the 14 priority districts



Elevation and population density in Kathmandu District

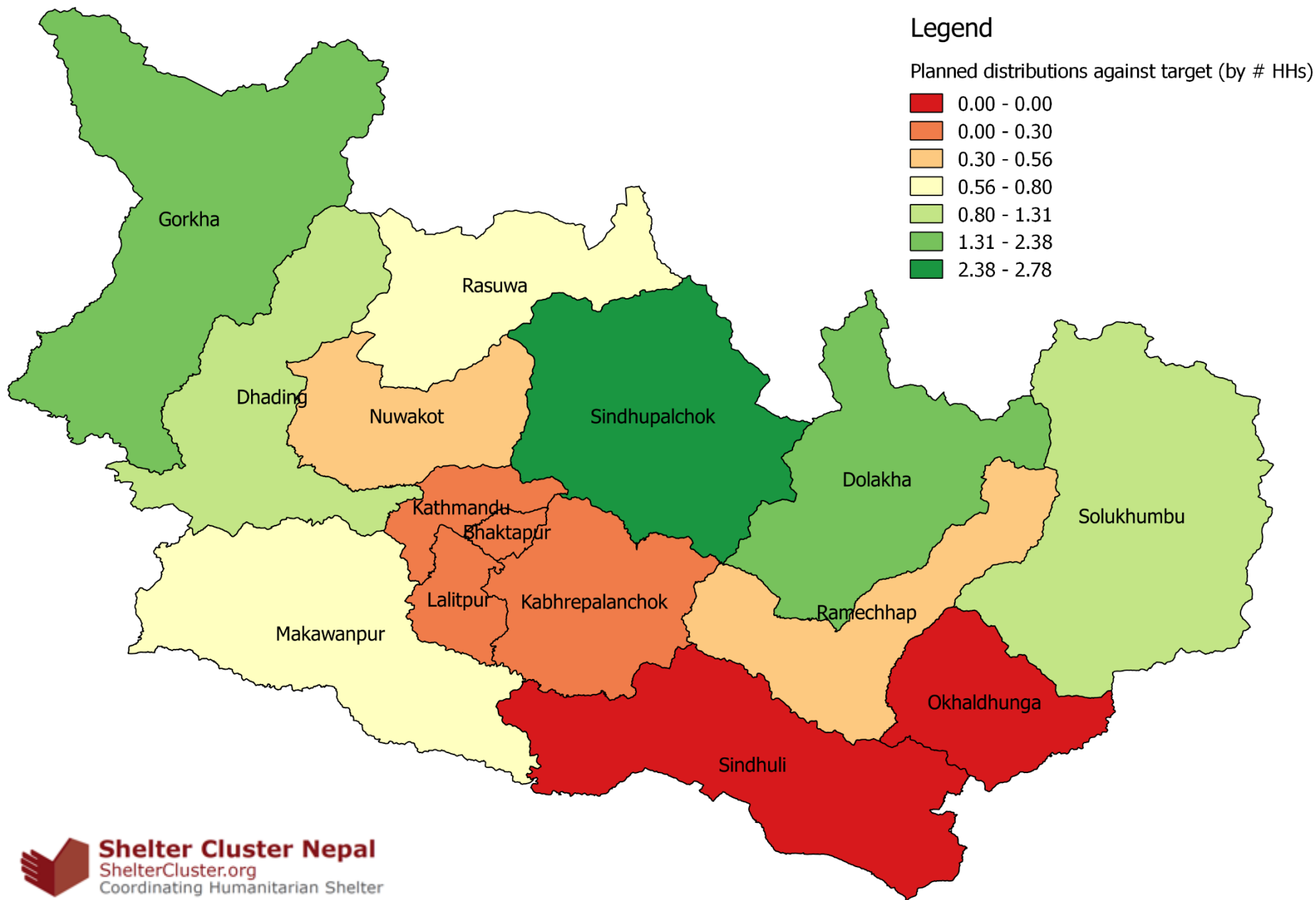


Estimated target and plans

District	winter_plans	winter_target	percentage
Bhaktapur	232	800	29%
Dhading	6089	4700	130%
Dolakha	19371	14200	136%
Gorkha	7290	4800	151%
Kabhrepalanchok	1385	13900	10%
Kathmandu	579	2000	29%
Lalitpur	377	1300	29%
Makawanpur	1994	3100	64%
Nuwakot	5268	9500	55%
Ramechhap	3043	7100	43%
Rasuwa	2060	3000	69%
Sindhupalchok	36027	12900	278%
Solukhumbu	3004	N/A	N/A



Planned winterization distributions according to the SC Winterization survey



Key Facts – 1/2

- 16 out of 22 agencies are planning winterization activities
- 14 out of 16 are implementing through a local agency
- 10 have fully secured funds
- 5 have unsecured funds
- All the agencies are using SC winterization guidance
- 5 are using UNHAS

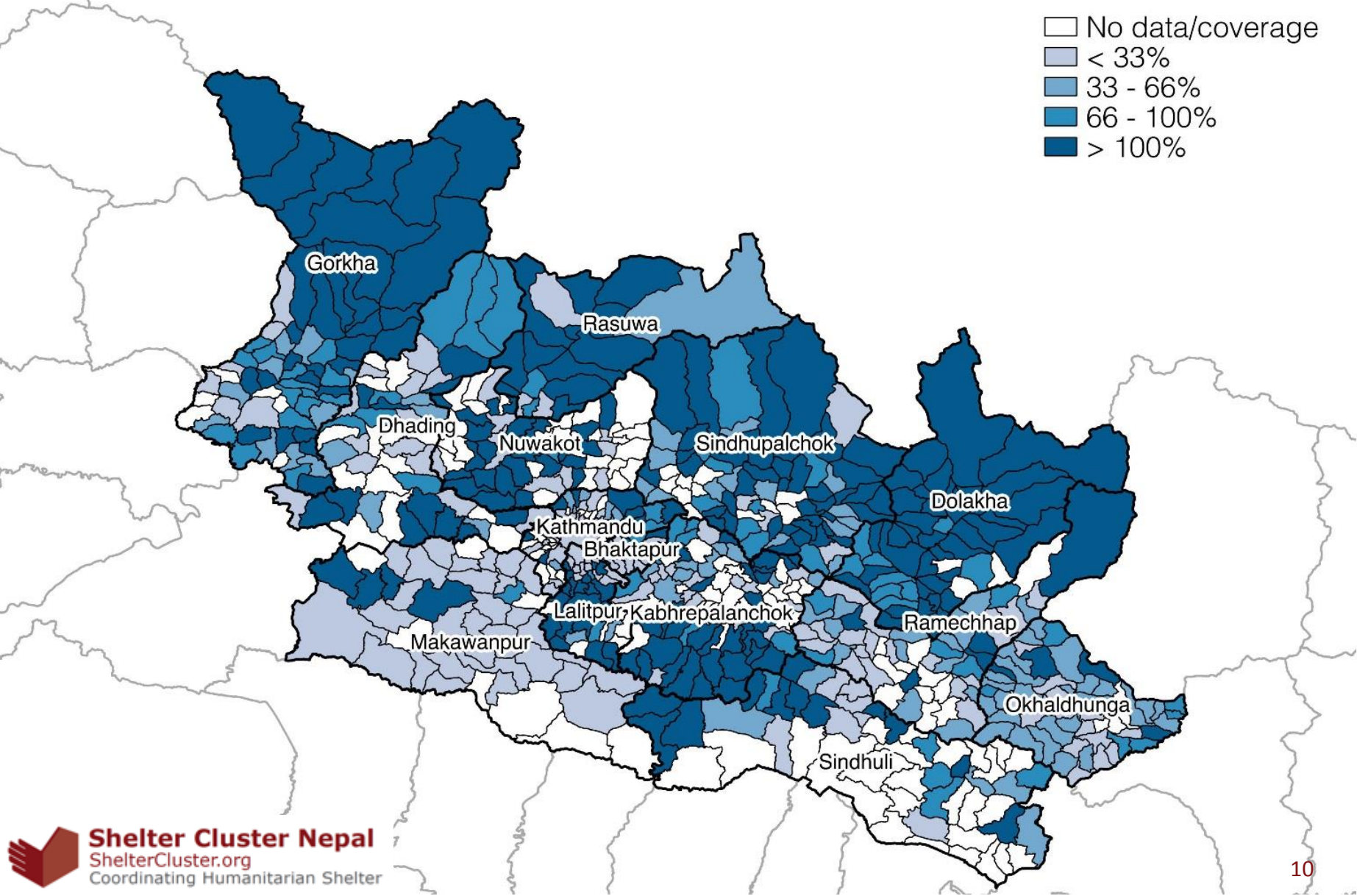
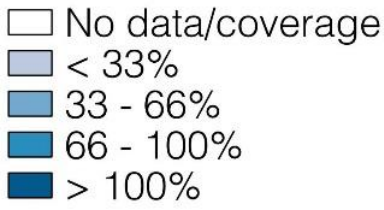


Key Facts – 2/2

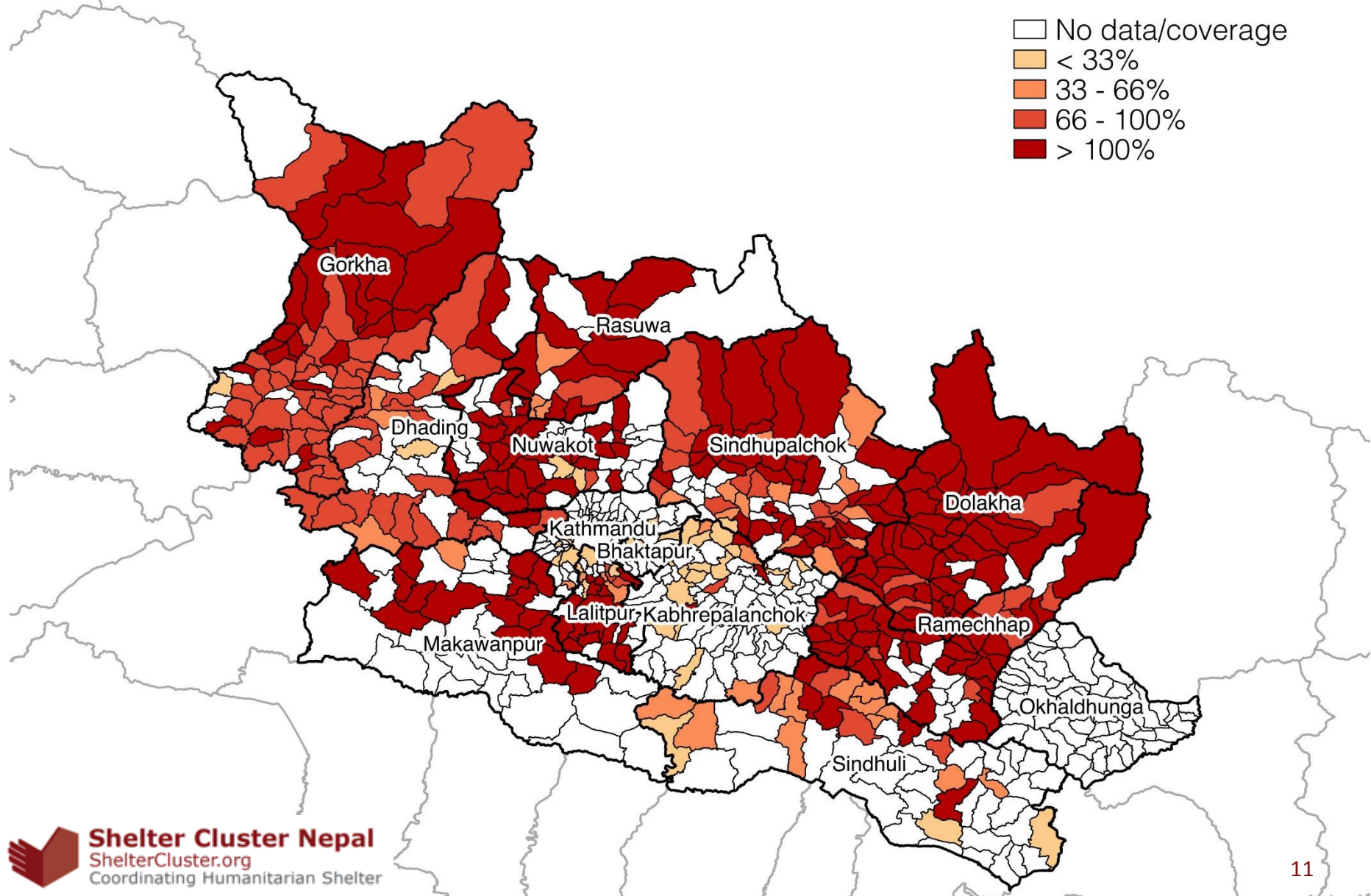
- 3 have funds for UNHAS
- Starting between October 5th and November 1st
- Finishing around end of October
- 9 only in kind distribution
- 3 unconditional cash
- 32,396 HHs have unconfirmed funding – PIN, CRS, Save have reported together (20,000 HHs)



Tarps and Tents Coverage – Ongoing and Completed



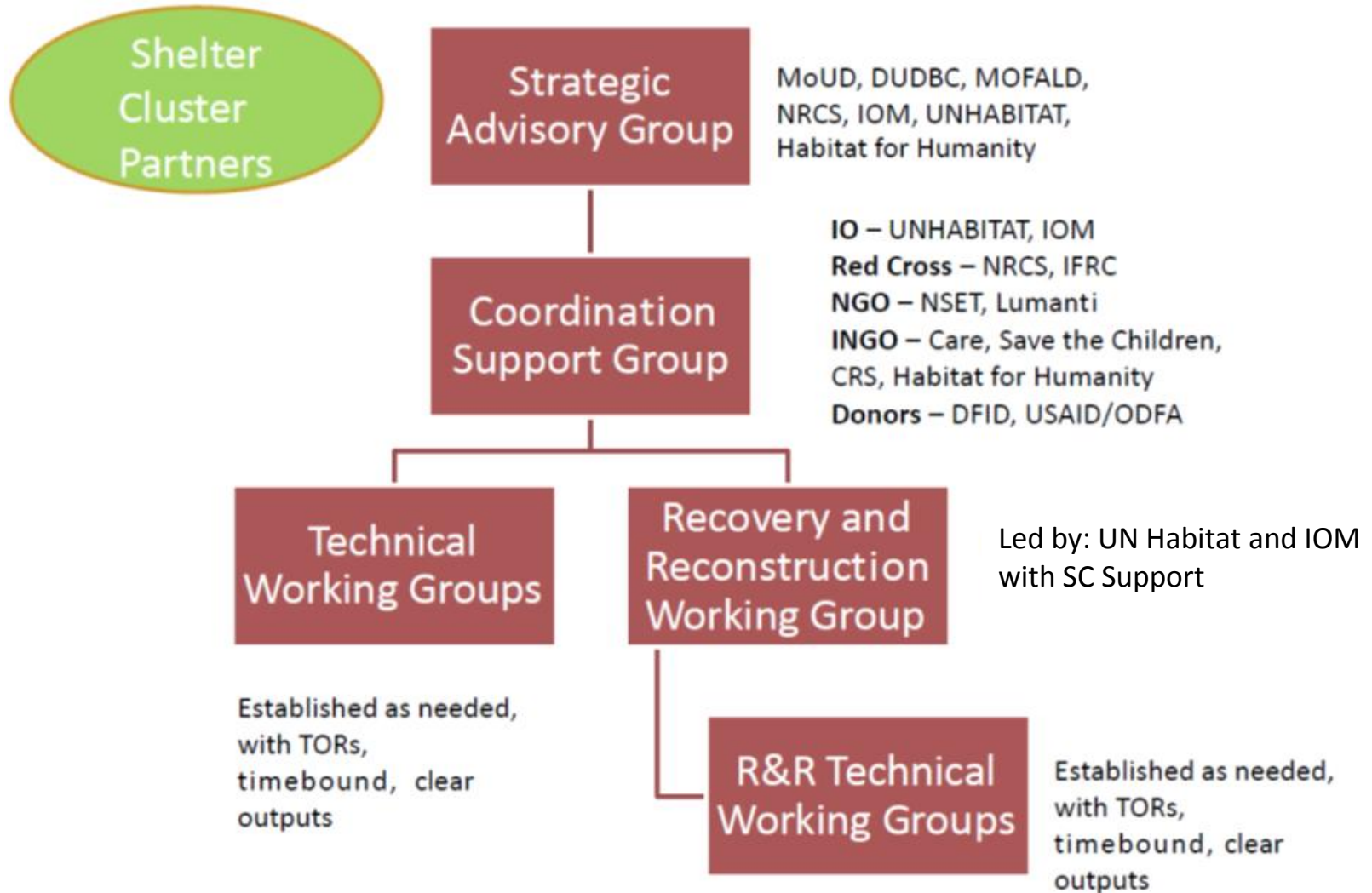
Cash and CGI Coverage - Ongoing and Completed



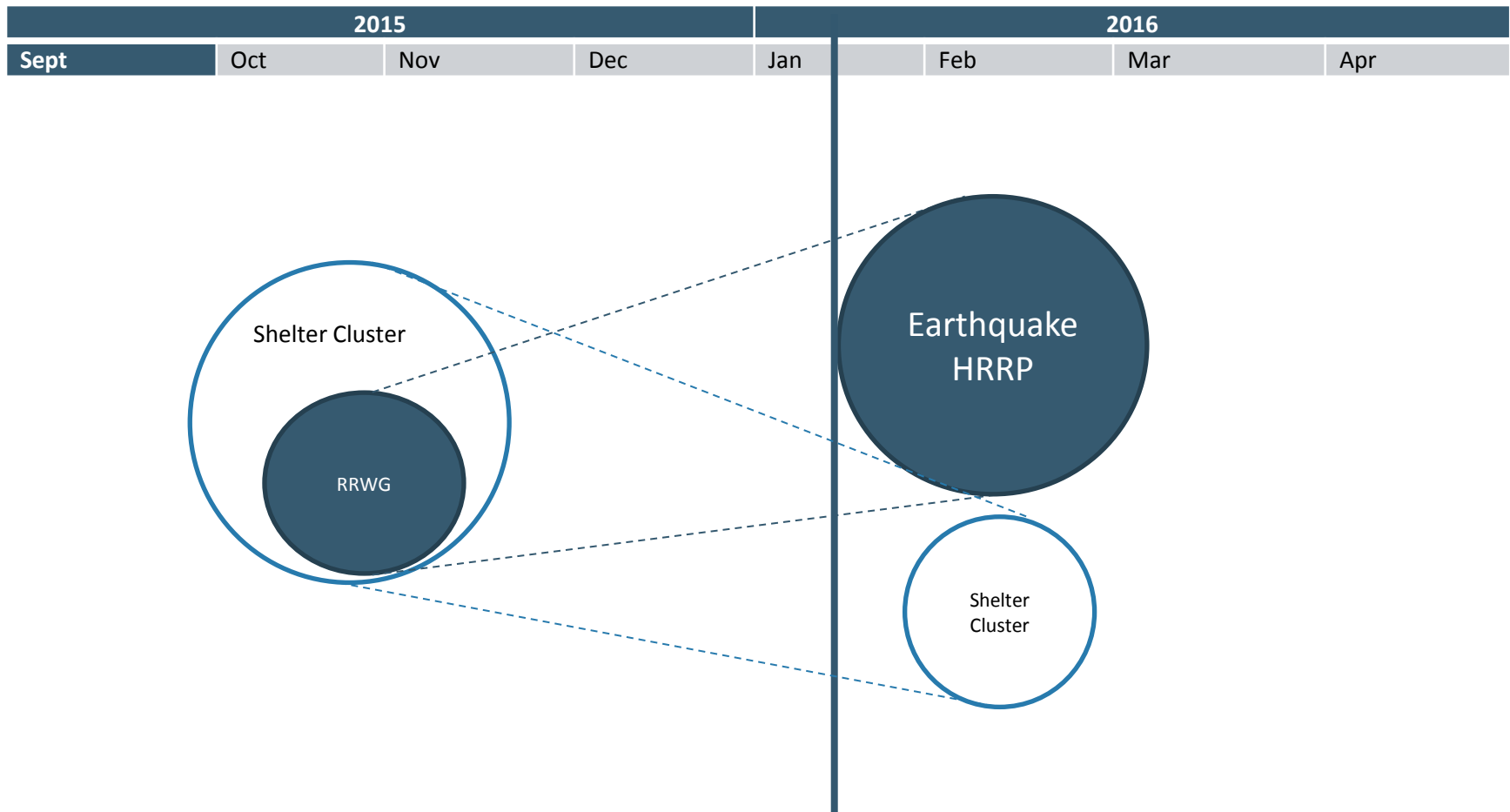
HOUSING RECOVERY AND RECONSTRUCTION PLATFORM COORDINATION STRUCTURE

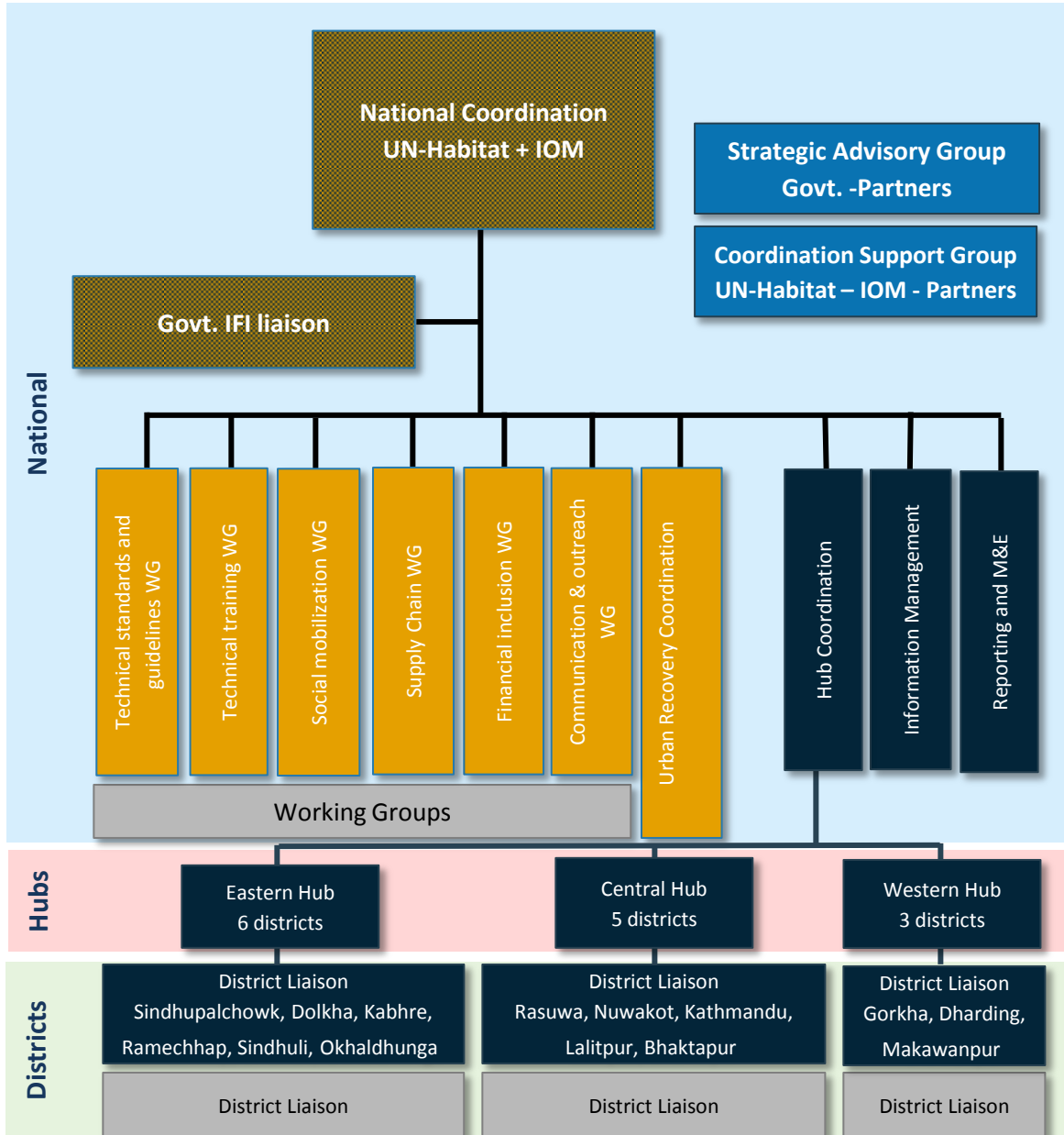
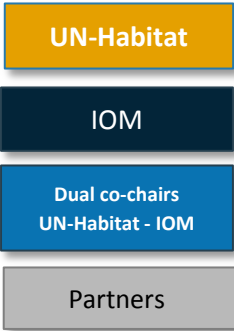


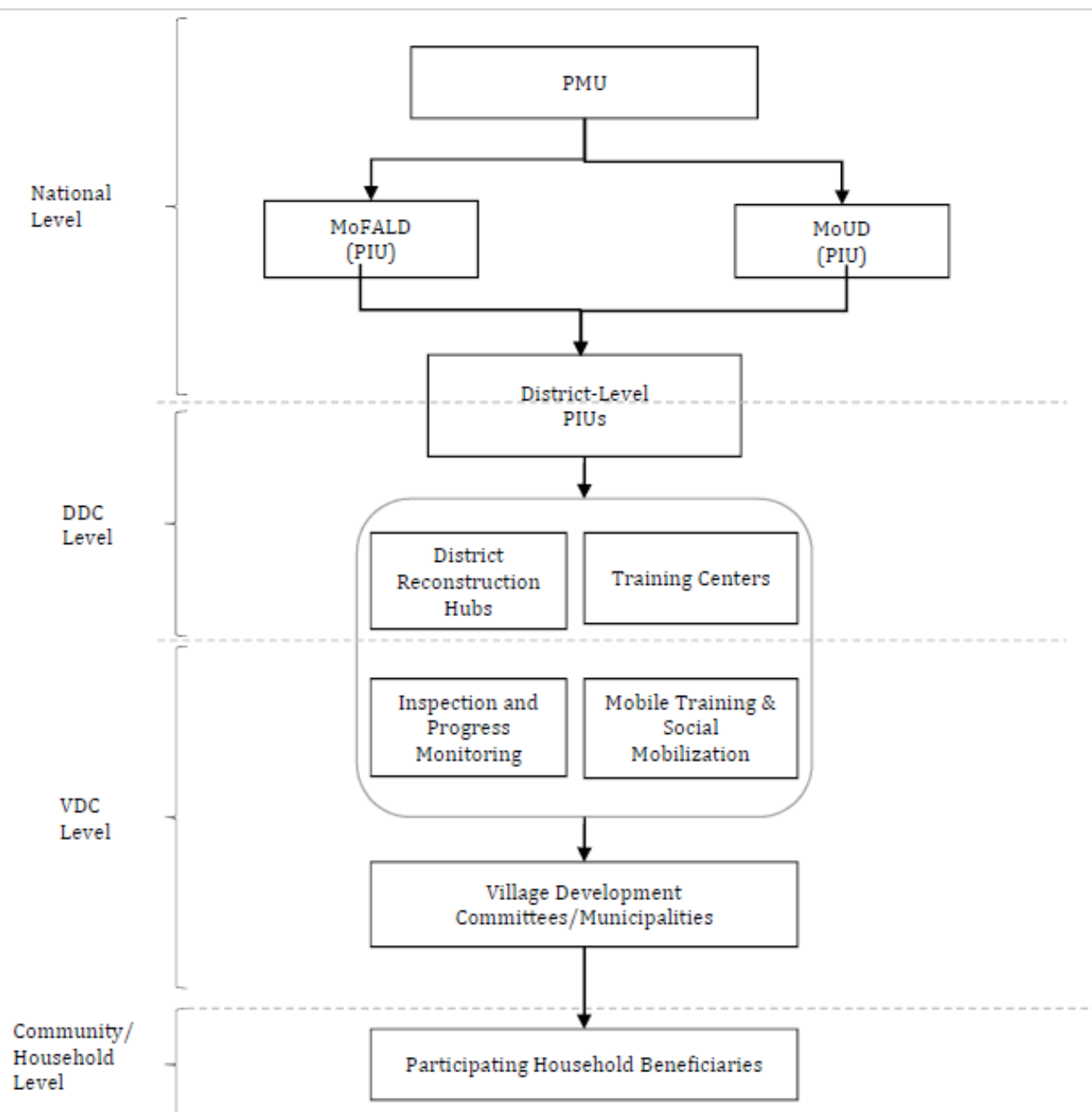
Coordination Architecture



Transition: Shelter Cluster to Earthquake HRRP







Q&A DOCUMENT



Collection of Qs

- Prior to, and during POs workshop on 10th September
- Continued and on-going process
- Share questions via email to tech2.nepal@sheltercluster.org, during meetings
- District Focal Points, Hub Coordinators collecting questions at District / VDC level



Information Provided

- Information provided in relation to Qs collected is based on the most up to date information available at the time of preparation
- Document will be updated regularly based on updated information, and addressing additional questions



Target Audience

- Currently targeting POs with the intention of supporting planning and implementation of current activities
- FAQs for communities will be a very important communication tool, included as an output in the RRWG workplan



DRAFT RRWG WORKPLAN



6 Month Workplan (draft)

- Prepared based on POs workshop discussion and feedback
- Focused on outputs
- 8 key topics
 - Coordination, operational setup
 - Supply chain
 - Technical standards, guidance, and training
 - Social and Community
 - Communications and Outreach
 - Reporting, Monitoring and Evaluation
 - Housing, Land, and Property Rights
 - Urban



Resource People / Organisations

- Resource people / organisations supporting each output need to have relevant skills required to deliver that output
- Some will be larger groups, some smaller, no prescribed number
- Expect that one resource person for each output takes 'lead' role



Revision and Update

- Urge RRWG members to review and provide feedback on draft workplan
- Timelines will be updated based on what resource people / organisations determine to be feasible / realistic
- Will evolve over time as context evolves and outputs are completed, new outputs are required



RRWG WORKPLAN UPDATES



POs MoUs, ToRs

- Common MoUs / TORs for the range of core TA activities to be provided by POs at VDC and District level
- Intended to:
 - Guide PO programme planning,
 - Provide predictability for the Government and communities,
 - Streamline administrative approval, monitoring and reporting processes, and
 - Reinforce coverage and balance in the levels of assistance



Core TA Activities

<p>Technical</p>	<p>Technical Assistance and training centres at District Level Technical Assistance and training centres at VDC Level Engineers trained Masons (skilled) trained Masons (unskilled) / owners trained Demonstration houses Community Resilience Projects Village and house on site demo / Quality Assurance</p>
<p>Social Mobilisation</p>	<p>Community committees PO staff trained PASSA Community orientation sessions Village and house visits</p>
<p>Outreach</p>	<p>Demo event participants Information fairs FAQs collection sessions Media listenership / readership</p>



DUDBC Housing TWG

- Members include Shelter Cluster, RRWG, World Bank, JICA, Institute of Engineering, and DUDBC
- The objectives of the TWG are as follows:
 - Support earthquake resistant housing and its elements through compliance with the NBC
 - Review prototype designs prepared by DUDBC, as well as received from I/NGOs or other groups and to recommend for approval
 - Support DUDBC with housing related seminars, workshops, etc.



DUDBC Housing TWG Contd.

- Objectives Contd.:
 - Prepare working guidelines as required
 - Review of new technologies (outside of NBC) and recommend for further research and testing
- Supported NPC technical workshop on rural housing designs, 13th September
- Providing support for preparation of prototype housing design catalogue
- Developed 'Minimum Requirements (MRs)' for NBC 202 and NBC 203



Technical Training

- Support Earthquake resilient technical training - 50,000 masons in 2 year period
- DUDBC masons training materials, including for ToT, available on SC website (links shared via email on 25th September)
- DUDBC EQ Resistant Building Construction Training Procedure 2015 also available on SC website, along with unofficial English translation
- Need to adopt a collaborative approach, optimise resources available



Technical Training Briefing

- Wednesday, 7th October, 11am, Bagaicha
- Delivered by NSET
- Will cover:
 1. Existing curricula for different levels of technical professionals
 2. Trainers development process for POs staff
 3. Timeline for trainers development process
 4. Masons training courses timeline
 5. Collective strategy for technical training



KAP Baseline Format

- Aim to have common format for all organisations to use
- NSET will be acting as focal point for KAP baseline format development
- Collecting existing formats, examples from other contexts, etc., request to share with Siobhan Kennedy (SC), tech2.nepal@sheltercluster.org and Suman Pradhan spradhan@nset.org.np



PASSA

- Participatory Approach to Safe Shelter Awareness
- The aim of PASSA is to develop local capacity to reduce shelter and settlement related risk by raising awareness and developing skills in joint analysis, learning and decision-making at community level

थप जानकारीका लागि आईएफआरसी पब्लिकेशन सम्पर्कका लागि :

अन्तर्राष्ट्रिय महासंघ
रेडक्रस तथा रेड-क्रेसेण्ट समाज

ग्राहाम सौन्डर्स
आवास तथा वस्ती विभाग
ईमेल : graham.saunders@ifrc.org
फोन : +४१ २२ ७३० ४२ ४१
फ्याक्स : +४१ २२ ७३३ ०३ ९५




पास्सा

सुरक्षित आवास सचेतनाका लागि
सहभागितामूलक अवधारणा

Printing and Translation Supported by :



www.ifrc.org
Saving lives, changing minds.

 International Federation
of Red Cross and Red Crescent Societies



Shelter Cluster Nepal
ShelterCluster.org
Coordinating Humanitarian Shelter

8 PASSA Steps

1. Historical profile
2. Community mapping and visit
3. Frequency and impact of hazards
4. Safe and unsafe shelter and settlement
5. Options for solutions
6. Planning for change
7. Problem box
8. Monitoring plan



PASSA Task Group

- Red Cross tool, CARE and Habitat for Humanity also have expertise
- Tool has been translated into Nepali by HfH, Nepali version available on SC website
- Red Cross, CARE, HfH have trained trainers and capacity to train trainers for other POs, provide materials, etc.
- Considering revision to PASHA – Participatory Approach to Safe Habitat Awareness – and based on context in Nepal



Communications and Outreach

- Further developing links with Communicating with Communities Working Group (CwC WG)
- Aim to tap into existing communications and outreach mechanisms to greatest extent possible:
 - Community feedback mechanism
 - Radio programmes
 - TV programmes
- Developing common IEC materials for reconstruction under SC Early Recovery Key Messages TWG
- Communications strategy (national and field level) important first step



Housing, Land and Property (HLP)

- Very brief overview of HLP
- Anticipated challenges
- Who is doing what
- Recommendations

क्र.सं.	प्रमाण संकेत	सं.वि.सं./न.पा.	वृत्ता नं./संसा.सं.	किंता नं.	विवरण (सं. असादी, इत्यादि)	व.प्र.को. इकाई/वृत्ता	मार्गको नाम वर	विशेष नं.	क्षेत्रफल (वर्ग मी.)	मौज/संसा. नं.	किंमत/विवरण	संशोधन/संशोधन
	१४१०	२०७१/०१/२५	सुनसानी	५	१९२	असादी	पुन	जोतावा फानी	५-८-१-३	२०७१		
			सुनसानी	५	१९२	असादी	पुन	जोतावा फानी	५-८-१-५	१९६०		
	१४१०	२०७१/०१/२५	सुनसानी	५	१९०	असादी	पुन	जोतावा फानी	५-०-३-३	२०७१		
			सुनसानी	५	१९०	असादी	पुन	जोतावा फानी	५-०-१-३	१९६०		
१०६	१४१०	२०७१/०१/२५	सुनसानी	५	१०६	असादी	पुन	जोतावा फानी	५-३-२-३	२०७१		
			सुनसानी	५	१०६	असादी	पुन	जोतावा फानी	३-१६-१-५	१९६०		
११४	१४१०	२०७१/०१/२५	सुनसानी	५	११४	असादी	पुन	जोतावा फानी	११-१-०-१	२०७१		
			सुनसानी	५	११४	असादी	पुन	जोतावा फानी	२-१७-१-६	१९६०		

Overview of HLP in post disaster settings

- Ensure the rights of the most vulnerable and should be free from HLP discrimination
- Right to an adequate standard of housing
- Access to information and participation
- Right to choose between return, local integration and relocation



Anticipated HLP Challenges

- Lack of documentation could lead to people missing out on subsidy payments and also ability to borrow money.
 - High level of ‘ownership’
 - Issues around ability to provide evidence of ownership because:
 - Not needed before
 - Inheritance issues – sub-division
 - Documentation has been lost



Anticipated Challenges Cont.

- Relocation:
 - State's responsibility to protect its citizens
 - Due process required to be followed
 - Multi hazard mapping
 - Consent
 - Involvement
 - Compensation paid
 - Considerations – livelihoods i.e. access to agriculture etc.



Who is doing what?

- Pre earthquake – UN-Habitat/UNDP and IOM
- Shelter Cluster Assessment
- IOM
- UNHCR/Protection Cluster
- CARE Nepal



Recommendations

- Work with Government to agree process of verification around land ownership
- Legal support in each technical assistance centre; to support the provision of land titles where required
- Factor in support required at agency level around putting together the 'blue book' – proof of ownership
- Communications campaign around what documentation is required to attain a land title certificate – a Lal Purja



Urban Assessment

- PDNA informs that ~25% of the damage to households occurred in urban areas, large caseload, complex contexts
- Assessment considered important first step to collect key information on urban context
- Will back up findings of 1st and 2nd rounds of Shelter Cluster assessment with regard to urban context
- Intended to support development of strategy for Technical Assistance and Training in urban areas



Next steps

- Further revision of RRWG workplan based on feedback, suggestions
- District level orientation to POs
- Review process for draft outputs
- Further analysis of R+R survey responses, moving to VDC level mapping
- Next meeting of RRWG on Wednesday, 28th October, 11am



ANY OTHER BUSINESS

