

# Shelter + NFI Cluster Meeting 10.02.2021

## CENTRAL REGION

1. General Overview of Eloise situation and shelter and NFI needs
2. Overview of active partners and plans for Eloise Response for comment/update
3. Updates on Recovery projects ongoing (Partners Input)
4. AOB

1. *Visão geral da situação Eloise e das necessidades de abrigo e NFI*
2. *Visão geral dos parceiros activos e planos para a Eloise Response para comentários/actualizações*
3. *Actualizações sobre projectos de recuperação em curso (Partners Input)*
4. *AOB*



## IN RESETTLEMENT SITES



73 resettlement sites

64 sites affected by  
Cyclone Eloise

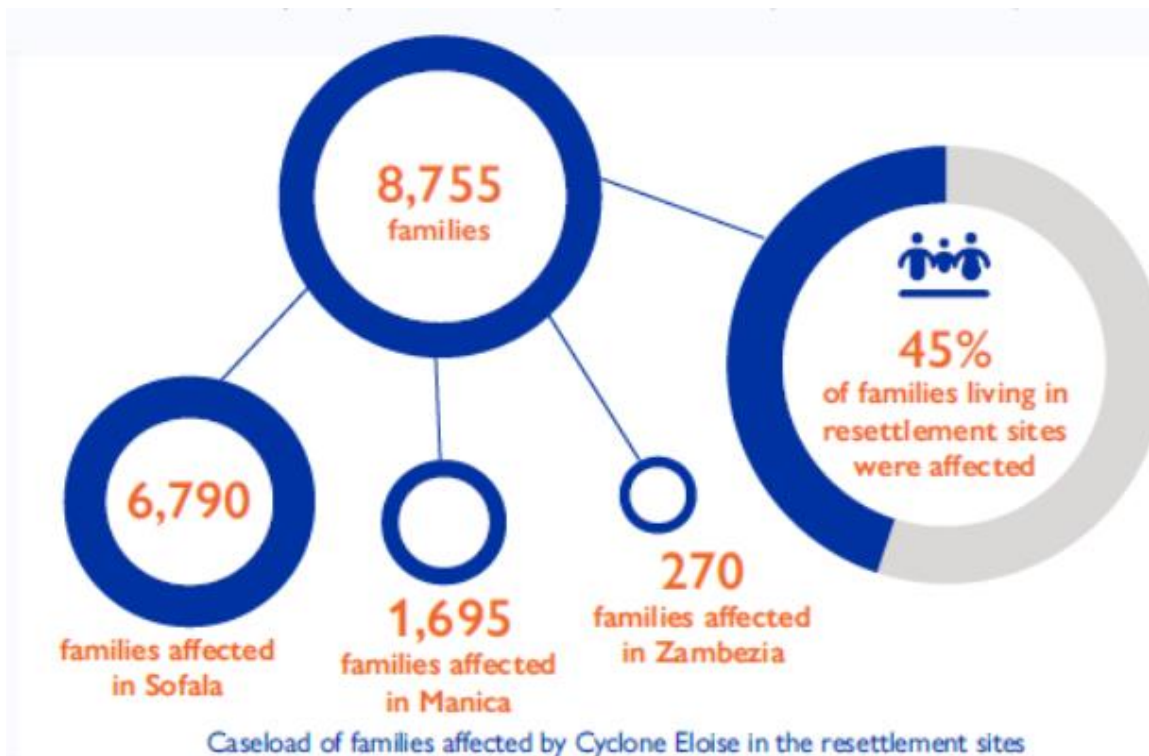


19,505 IDP households

8,755 households affected by  
Cyclone Eloise in the resettlement sites



93,392 IDPs



# ACCOMODATION CENTRES- ORDER OF DEACTIVATION (GRADUAL/ PHASED)

1

**8 February**

- 1-Samora
- 2-Ifapa
- 3-12 de Outubro
- 4-Matadouro
- 5-Muavi

**9 February**

- 06-Genero
- 07-Mutemba
- 08-Chamba2
- 09-C Educacional de Marocanha
- 10-Escola Especial
- 11- Palmeiras
- 12- Matacuane
- 13-Chota

**10 February**

- 14- EPC 25 de Junho
- 15-Estoril
- 16-Macuti
- 17-Inharime
- 18-Nhangau
- 19- Amical Cabral
- 20-Munhava Central

*Those who cannot return and expressed willingness to be resettled to a safer area, initial planning from the INGD is to gather those who cannot return temporarily to IFAPA while allowing more time for the viability assessment of a newly identified resettlement.*

Aqueles que não podem regressar e manifestaram vontade de serem realojados numa área mais segura, o planeamento inicial do INGD consiste em reunir aqueles que não podem regressar temporariamente ao IFAPA, dando simultaneamente mais tempo para a avaliação da viabilidade de um realojamento recentemente identificado.

NOW

BEIRA

2

ES de Tica	420
EPC Nhambauama	96
EPC Felipe Nyusi/Mandagua	60
John Segredo	357

STARTING THIS WEEK

NHAMATANDA

EPC Inharongue	210
Bopira	140
Mucinemue	170
Muchenessa	273
EPC Bandua	423
A.C Guara guara***	1848

2-3 WEEKS

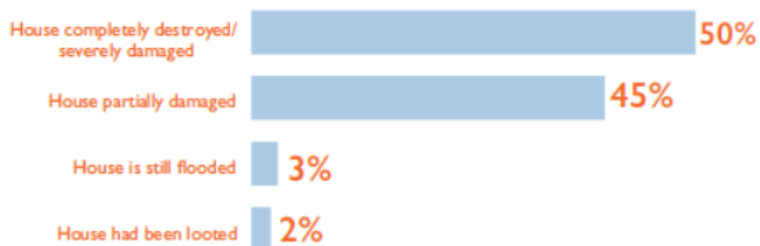
3

BUZI

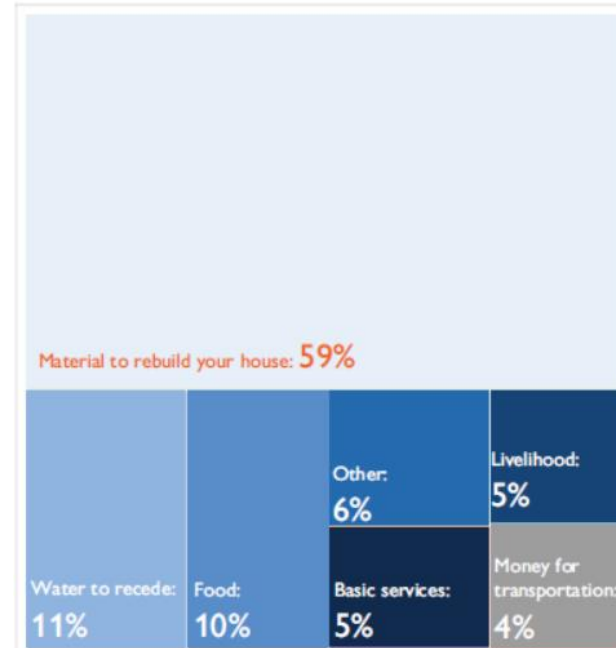
# INTENTIONS SURVEYS- BEIRA/ Inquéritos de intenção, BEIRA

## HOUSING STATUS OF RESPONDANTS

The majority (95%) of the households reported having their houses affected - destroyed, severely or partially damaged, while three per cent still have their house flooded and two per cent of the houses had been looted.

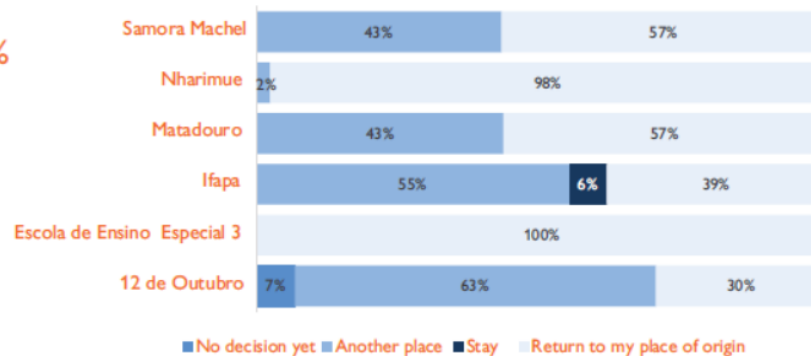
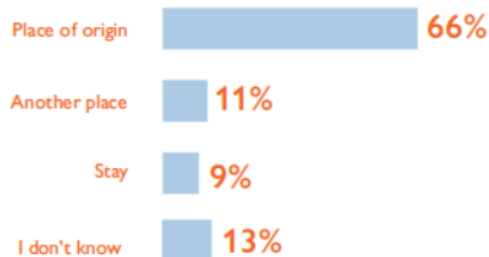


Current state of house in which families had lived prior to displacement



Assistance/conditions needed to return to place of origin

## RETURN INTENTION



<https://displacement.iom.int/reports/mozambique-%E2%80%94-tropical-cyclone-eliose-intention-survey-accommodation-centres-located-beira-0>

## PRIORITY NFIS IN RESETTLEMENT SITES

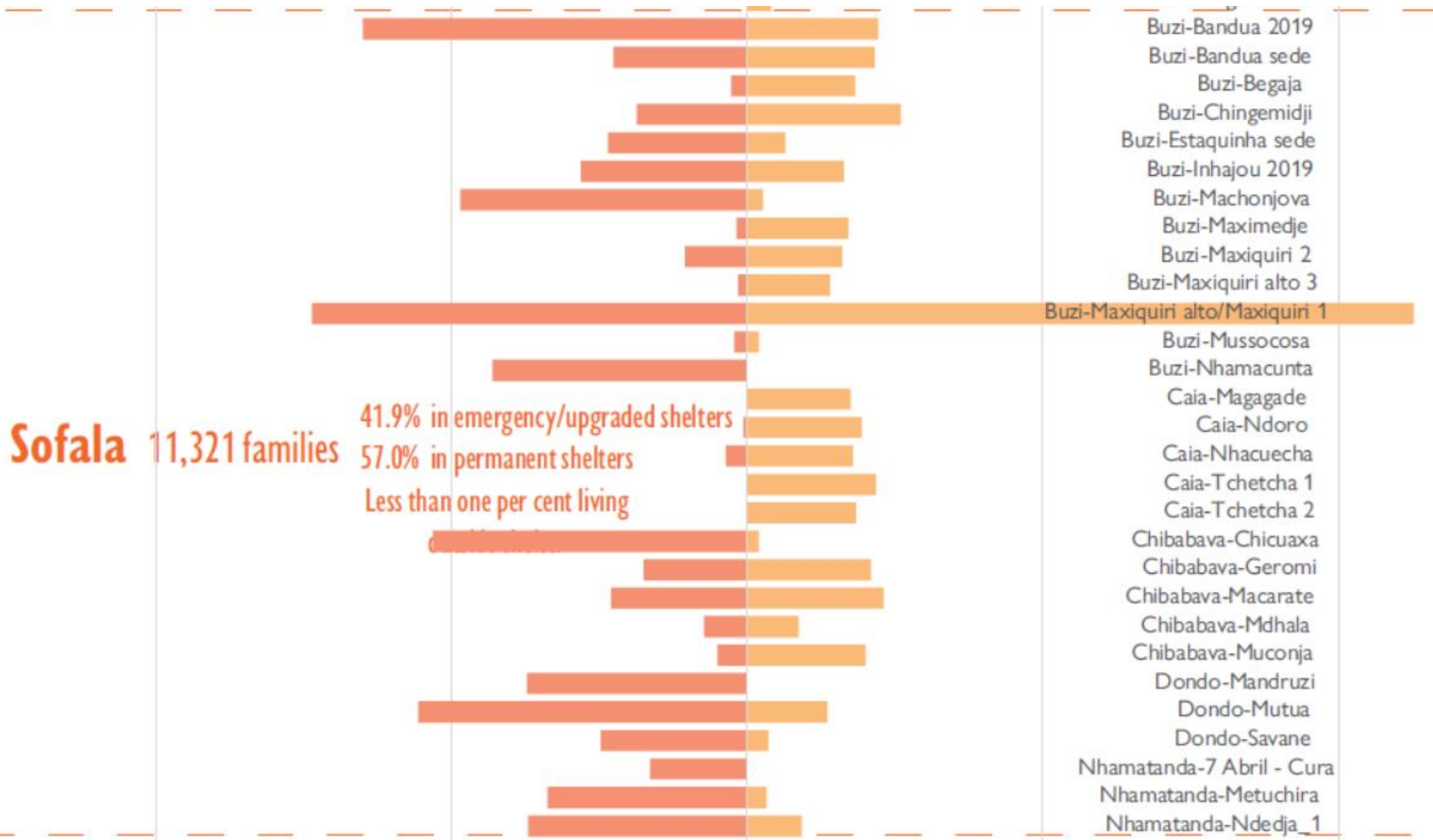
The priority Non-Food Items needed but however not accessible on site are: 1) **Sleeping items** and/or bedding materials in 26 sites; 2) **Jerri-can** and/or tapped water containers to transport and store water in 23 sites, and 3) **shoes and clothes** in 11 sites. Lack of economic means to purchase those items was mentioned as the main reason why IDPs are unable to access these NFIs.

*\*SC also recommends vacuum bags for safeguarding personal documents, as feedback is that many people have been observed trying to protect personal documents and dry them etc.*

<https://displacement.iom.int/reports/mozambique-%E2%80%94-multi-sectorial-location-assessment-tropical-cyclone-elouise-aftermath-report-19>

# EVOLUTION FROM EMERGENCY TO PERMANENT

## PERMANENT vs. EMERGENCY



<https://displacement.iom.int/reports/mozambique-%E2%80%94-multi-sectorial-location-assessment-tropical-cyclone-elouise-aftermath-report-19>

ORGANIZATION	SUPPORT	RESTORING DOMESTIC ACTIVITIES	RESTORING SHELTER ENCLOSURE	LOCATION	RESOURCE MOBILIZATION
CVM		700 kitchen sets 300 blankets 2694 jerry cans	2091 tarps 1465 shelter toolkits		DREF APPEAL
CARE	Market assessment + multi-sectoral assessment ongoing		85 Shelter recovery kits, 60 BBS Toolkits	TBC	*ONGOING RESOURCE MOBILIZATION for 1200HH (Family kit + 2 Tarps)
Food for Hungry		Kitchen Sets: 1000HH	Shelter kits: 1000HH		
IFRC		NFIs for 500 HH	Shelter Kits for 500HH	Nhamatanda	DREF APPEAL
Good Neighbours		Sleeping mats for 400+HH in ES Tica			INTERNAL RESOURCE MOBILIZATION FOR RECOVERY PROJECTS
Miracles in Mozambique		Preparing their Eloise Response plan- Details awaited	Preparing their Eloise Response plan- Details awaited		
CCM		Preparing their Eloise Response plan- Details awaited	Preparing their Eloise Response plan- Details awaited		
IOM			TO BE CONFIRMED-  3000HH; 8 CGI sheets, umbrella nails, minimum kits (hammer, tin, snip, cerrote)		<b>CERF APPEAL:</b> Locations: Buzi, Sussundenga Districts <u>Evacuation Centres:</u> NFIs (2 blankets, 2 mosquito nets, 1 Solar lamp, 1 bucket): 1,000 HHs Essential NFIs in Evacuation Centers <u>Resettlement Sites:</u> NFIs (1 kitchen set, 2 blankets, 2 mosquito nets, 1 solar lamp, 1 bucket): 1,000 HHs Essential NFIs in Resettlement Sites Shelter kits and tools (2 tarps, 150mt rope, 1 catana, 3kg nails): 2,000 HHs Emergency Shelter kits where shelters have been destroyed in resettlement sites <u>Newly displaced:</u> Shelter kits and tool (2 tarps, 150mt rope, 1 catana, 3kg nails): 2,000 HHs Emergency Shelter kits to newly displaced <u>Non-displaced:</u> House repair kits & tools (2 tarps, 150mt rope, 1 catana, 3kg nails, 1 enxada): 1,000 HHs This is assistance for non-displaced (those at accommodation centres who will return home) with house repair kits <b>Total: 6,000 HHs</b>
Peace Winds Japan	Transportation and distribution assistance Offered in Bandua, Buzi				INTERNAL RESOURCE MOBILIZATION FOR RECOVERY PROJECTS
MSF	Support to Shelter Cluster Offered in Guara Guara area of Buzi				ONGOING

# Shelter Cluster Eloise Response Strategy FOR DISCUSSION

>NEEDS FAR OUTWEIGH THE RESPONSE CAPACITY SO SHELTER CLUSTER STRATEGY MUST BE TO REACH THE MOST VULNERABLE TO HELP THEM RESTORE DOMESTIC ACTIVITIES AND RESTORE SHELTER ENCLOSURE

## VULNERABLE TARGET GROUPS:

- NEWLY DISPLACED PEOPLE MOVING TO RESETTLEMENT SITES
- PEOPLE WITH COMPLETELY DESTROYED HOUSES
- THOSE WHO DID NOT EVEN MADE IT TO ACCOMODATION CENTRES DUE TO COVID FEARS ETC. IN COMMUNITIES- ELDERLY/ DISABLED (Protection Cluster reported that many of the **most vulnerable** are still in their homes)
- THOSE WHO ARE IN HARD TO REACH AREAS WHERE THEIR ABILITY TO SELF RECOVER IS LESS

## **#1 TARGET DISTRICT FOR INGD- BUZI**

*>AS NECESSIDADES SUPERAM DE LONGE A CAPACIDADE DE RESPOSTA, PELO QUE A ESTRATÉGIA DE AGRUPAMENTO DE ABRIGOS DEVE SER A DE ALCANÇAR OS MAIS VULNERÁVEIS PARA OS AJUDAR A RESTAURAR AS ACTIVIDADES DOMÉSTICAS E A RESTAURAR O RECINTO DO ABRIGO*

## GRUPOS-ALVO VULNERÁVEIS:

- PESSOAS RECENTEMENTE DESLOCADAS QUE SE DESLOCAM PARA LOCAIS DE REINSTALAÇÃO
- PESSOAS COM CASAS COMPLETAMENTE DESTRUÍDAS
- AQUELES QUE NEM SEQUER CHEGARAM AOS CENTROS DE ALOJAMENTO DEVIDO A RECEIOS DE COBIÇAS, ETC. EM COMUNIDADES- ELDERLY/ DISABLED (O Cluster de Protecção informou que muitos dos mais vulneráveis ainda se encontram nas suas casas)
- AQUELES QUE SE ENCONTRAM EM ZONAS DE DIFÍCIL ACESSO ONDE A SUA CAPACIDADE DE AUTO-RECUPERAÇÃO É MENOR

## **#1 DISTRITO ALVO PARA O INGD: BUZI**

- AOB ELOISE

## **UPDATES FROM PARTNERS ON RECOVERY PROJECTS**

**-CHANGES SINCE ELOISE AND CHALANE?**

## **ACTUALIZAÇÕES DE PARCEIROS SOBRE PROJECTOS DE RECUPERAÇÃO**

**-MUDANÇAS DESDE A ELOISE E CHALANE?**