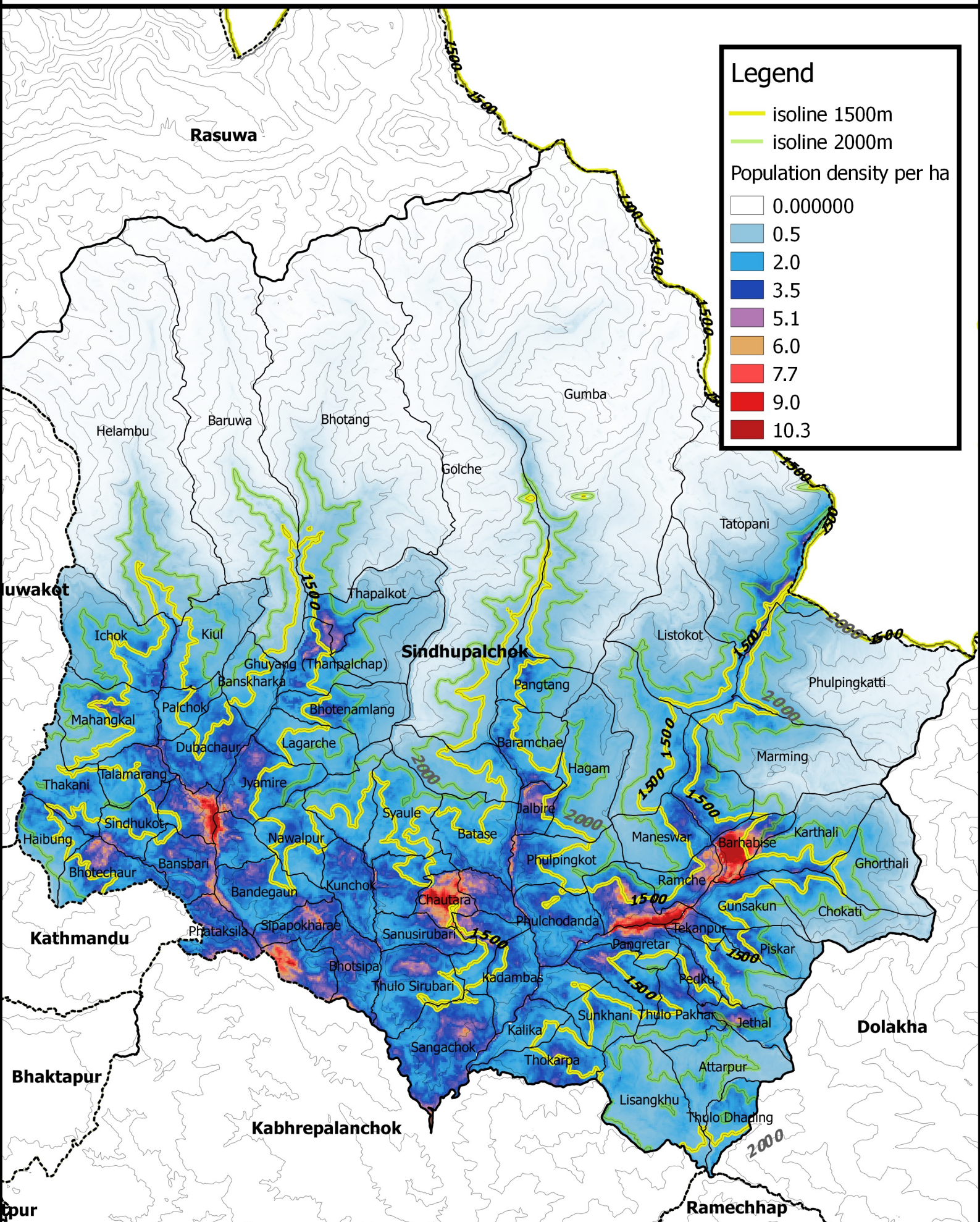


Maps for Winterization Planning: Elevation and Population Density - Sindhupalchok



Legend

- isoline 1500m
- isoline 2000m

Population density per ha

	0.000000
	0.5
	2.0
	3.5
	5.1
	6.0
	7.7
	9.0
	10.3

This map was produced by the Shelter Cluster Information Management Team to help agencies better plan for winter distributions. It is to be used together with the Winterization technical annexes that can be found at www.sheltercluster.org. The population density data is based on 2011 census. Agencies will still need to conduct their own assessment and consult the local authorities for latest population data.