

Displacement Updates in North-West Syria

Some **2.7 million IDPs** are living in north-west Syria, bringing the total population close to 4.3 million.

24,143 IDPs were displaced in December, the majority of whom have been displaced three or more times (81%). The top three sub-district of arrival were Maaret Tamsrin, Bulbul, and Jarablus. The new IDPs mainly cited livelihoods as their top priority need.

Only **35% of the IDPs displaced in December are reportedly living in adequate housing**, which is less than in the previous months, indicating higher levels of vulnerability and harsher living conditions. Around 55% are living in emergency shelter, predominantly tents, while 5% are living in sub-standard buildings, most of which are unfinished buildings. Another 5% have resorted to transitional shelters, mainly containers.

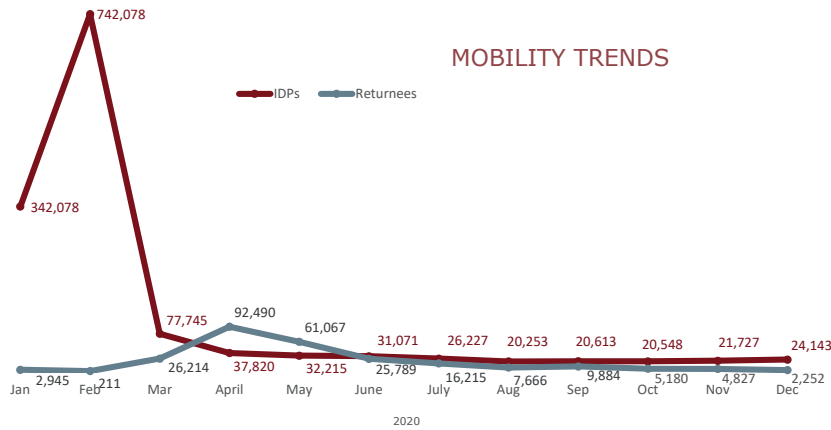
Response

SNFI Cluster members continue to actively respond to the needs of the newly displaced population as well as protracted IDPs north-west Syria.

In December, more than **582,000 individuals received NFI assistance** in the form of NFI kits, kitchen sets, mattresses, jerry cans, carpets, solar lamps, tarpaulin and blankets.

Shelter needs of almost **135,000 people were addressed** during December. Of this support, 46% was related the provision of emergency shelter, 45% to the rehabilitation of infrastructure in IDP sites and 12% to shelter rehabilitation and transitional shelters.

The Cluster is active in the coordination of the **winterization response** to ensure that plans are implemented in an efficient and timely manner to target close to 1.5 million people. From October to December, Cluster member reached over **889,000 individuals with winterization assistance**. The main activities included fuel distribution, and cash and voucher assistance for winter NFIs.



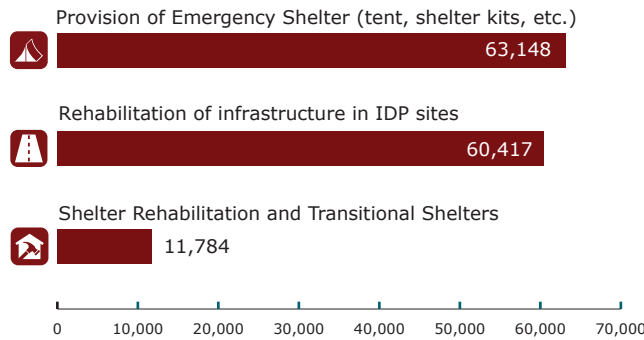
Graph: Number of IDPs in NWS and returnees from within Syria for the past 12 months, as reported by HNAP in December 2020.

Shelter Response

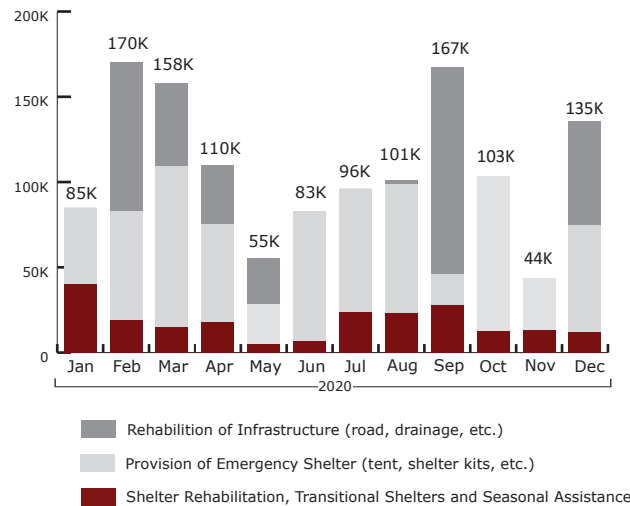


1,312,944 people were reached in 2020 with rehabilitation of infrastructure (380,541 people); provision of emergency shelter (710,547 people); shelter rehabilitation and transitional shelters (189,236 people), and seasonal assistance (32,620 people).

People reached in December by sub-activity



People reached in the past 12 months by activity

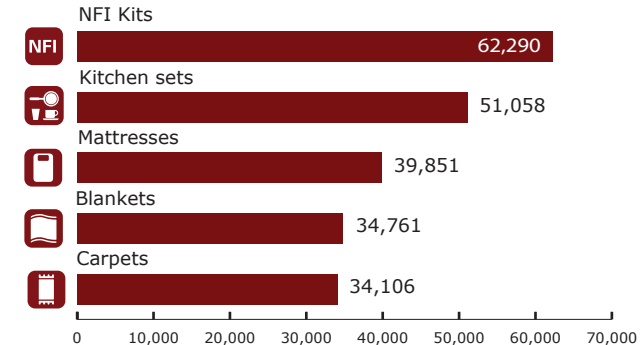


NFI Response

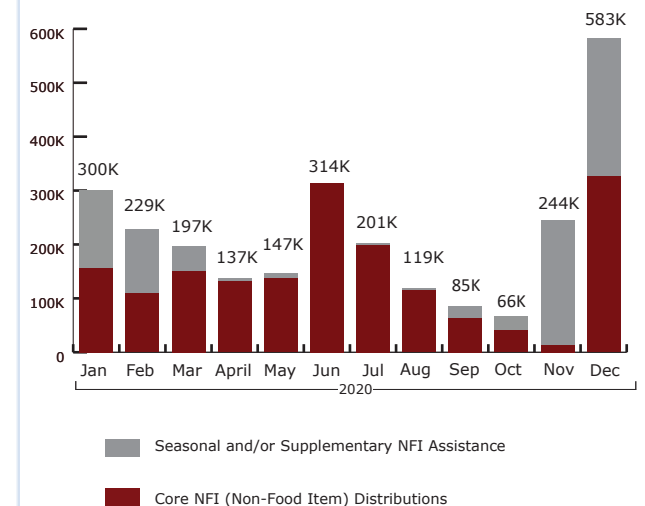


2,668,484 people were reached in 2020 with seasonal and/or supplementary NFI assistance (868,788 people), and core NFI distributions (1,799,696 people).

People reached in December by item (top 5 items)



People reached in the past 12 months by activity



NWS IDP Shelter Conditions Report

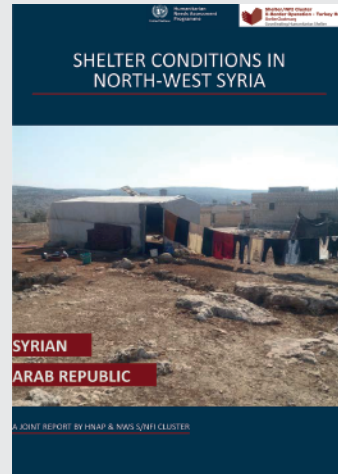
The SNFI Cluster and HNAP have collaborated on a **joint report on shelter conditions for IDPs across north-west Syria**. Specifically, the following areas are explored: shelter types, settlement types, shelter damages, problems or issues reported in shelters, hazards, evictions, occupancy status and property status in the place of origin.

According to the findings, 45 percent of IDP households across NWS live in finished houses or apartments, 25 percent in tents, and 12 percent in both concrete block shelters and unfinished houses/apartments.

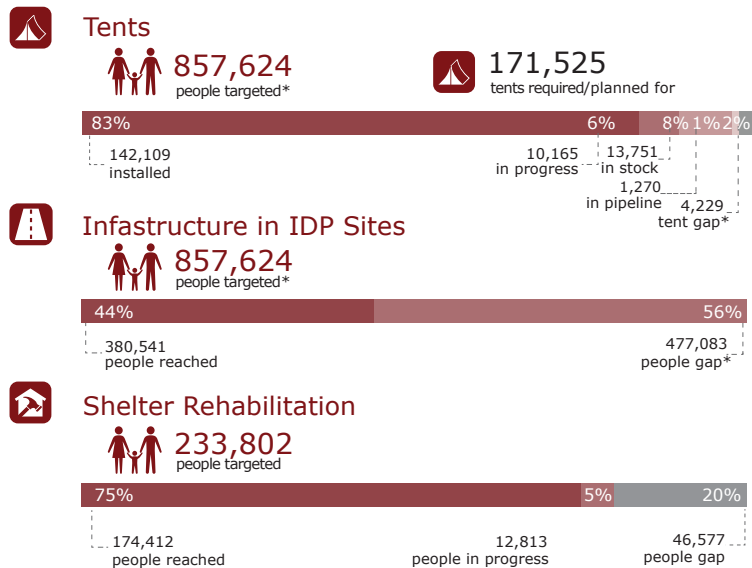
17 percent of IDP shelters across NWS are currently damaged (not including tents, makeshift shelters or concrete block shelters) and 30 percent have been unable to make repairs on their current shelter because they cannot afford it. **Lack of space inside IDP shelters is the most frequently reported problem** (36 percent across NWS).

Almost half of IDP HHs across NWS rent their current shelter (48 percent) although a significant 36 percent are being hosted for free. 83 percent of IDP households own property in their place of origin, but 64 percent of these households report that property as either damaged or destroyed, while only 6 percent report it intact.

The findings also show that hazards are much more frequently reported by IDPs living in camps as compared to communities. **Around 67% of IDP households living in camps reported having faced some kind of hazard**, the most common one being wind causing damage to the shelter.



Activities in Progress, Stock and Gaps as of December 2020



Winterization Update as of December 2020

Total Winter Assistance

1,449,021 people targeted**



NFI Kits

175,442 people targeted**



Fuel Distribution

231,181 people targeted**



Stove Distribution

166,778 people targeted**



Winter Clothing Kits

201,848 people targeted**



Cash/Voucher Assistance

764,999 people targeted**



*The updated targets and resulting gaps for tents, infrastructure, and NFI includes preparedness for an estimated 120,000 individuals in case of a new major displacement.

** The target for winterization is based on partners plans and capacities - the overall gap is higher.



Shelter NFI Cluster website

Contact: im.turkey@sheltercluster.org

Shelter NFI Whole of Syria page

Data source: Shelter/NFI Cluster 4Ws, CCCM Cluster, HNAP, Ground Truth Solutions, WHO

SNFI Cluster Interactive Dashboard

Creation date: 1 February 2021