

Displacement Updates in North-West Syria

Some 2.7 million IDPs are living in north-west Syria, with more than 26,000 IDPs newly displaced in July 2020.

According to HNAP's Mobility and Needs Monitoring Factsheet, over half of the IDP population in north-west Syria are now living in adequate housing and 36% of IDPs are living in emergency shelter, predominantly tents. Housing options for IDPs remain limited, with 7% living in sub-standard buildings, most of which are unfinished buildings; and 1% of IDPs have found public buildings, like schools, to be the only shelter option, thereby disrupting the provision of public services.

Response

SNFI Cluster members continue to actively respond to the needs of the newly displaced population as well as protracted IDPs north-west Syria.

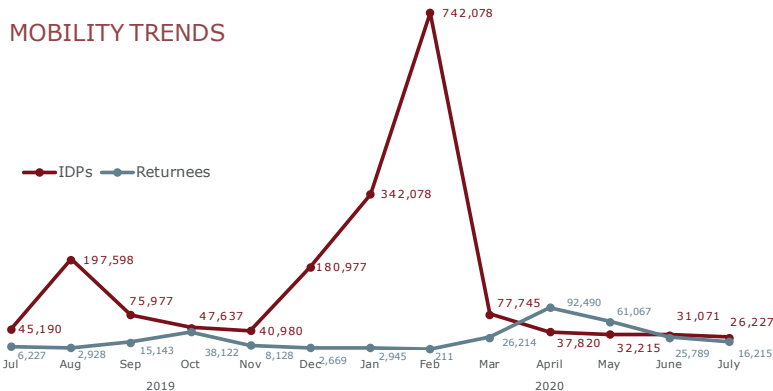
In July, **200,556 individuals received NFI assistance** in the form of NFI kits, kitchen sets, mattresses and blankets. Some of these distributions were complemented with supplementary NFI items. **Shelter needs of around 96,187 people were addressed** with activities like provision of emergency shelter (72,393 people) or shelter rehabilitation and repair (23,794 people) during July.

The SNFI Cluster is actively coordinating with the Health and WASH Clusters to respond to the needs of the IDP population in the context of the COVID-19 pandemic. SNFI aims to mitigate the spread of COVID-19 during distributions, to improve the conditions of inadequate shelters and decongest overcrowded collective shelters. The SNFI Cluster updated its recommendations on COVID-19 in both English and Arabic to include a **new recommendation from the cluster to include cloth-masks in NFI kits** to mitigate the risk of COVID-19 transmission in line with WHO recommendations.

SNFI continues to provide **site planning support through coaching and trainings** with the goal of building capacity and facilitating well-planned settlements in north-west Syria. The trainings have been in the form of weekly online sessions via zoom meeting with simultaneous Arabic interpretation. Training topics varied from terrain analysis to child protection in IDP sites, introduction to GIS, and site planning strategies to mitigate GBV. A specific Site Planning Page has been developed on the SNFI website, where various resources are compiled to provide additional support.

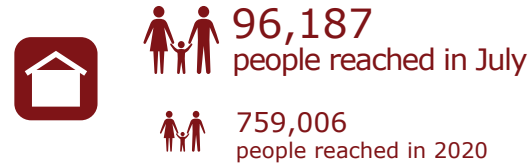
In response to multiple fire incidents occurring in IDP sites in north-west Syria, SNFI focused on coordinating and meeting to discuss fire risks and mitigation measures in IDP sites with SNFI members, during the monthly cluster meeting, and with the CCCM Cluster. Site planning support has also included mitigation measures for the spread of fire by ensuring that plans submitted for support and review have the appropriate fire breaks and distance between tents in accordance with the Sphere Standards.

MOBILITY TRENDS



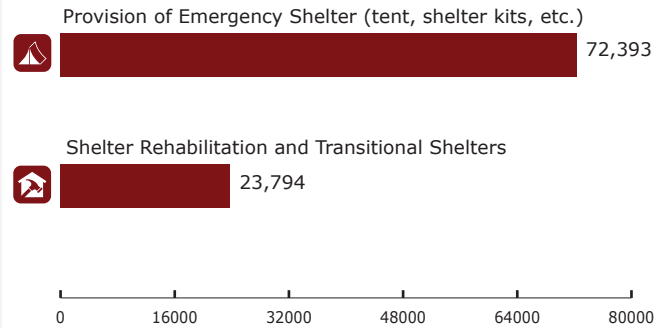
Graph: Number of IDPs in NWS and returnees from within Syria for the past 12 months, as reported by HNAP in July 2020.

Shelter Response

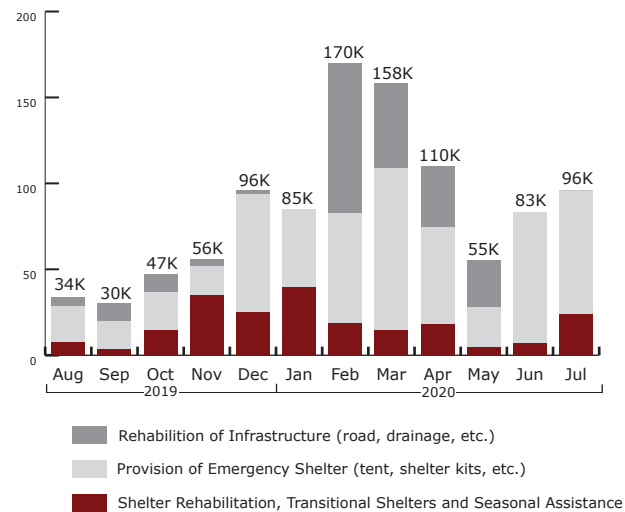


759,006 people were reached in 2020 with rehabilitation of infrastructure (197,665 people); provision of emergency shelter (431,178 people); shelter rehabilitation and transitional shelters (99,801 people); seasonal assistance (30,363 people).

People reached in June by sub-activity



People reached in the past 12 months by activity

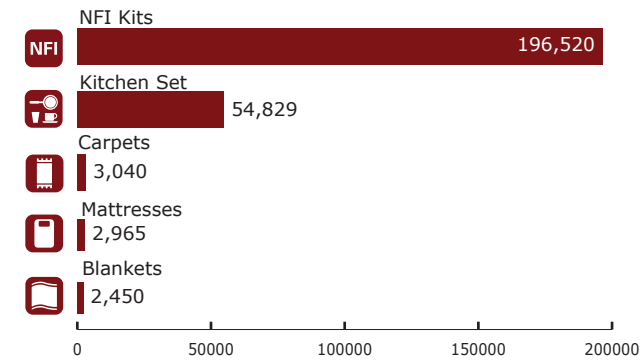


NFI Response

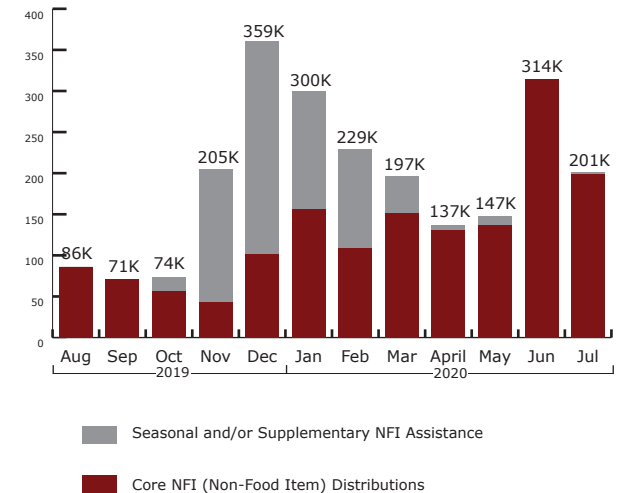


1,536,238 people were reached in 2020 with seasonal and/or supplementary NFI assistance (337,264 people), and core NFI distributions (1,198,974 people).

People reached in June by item (top 5 items)



People reached in the past 12 months by activity



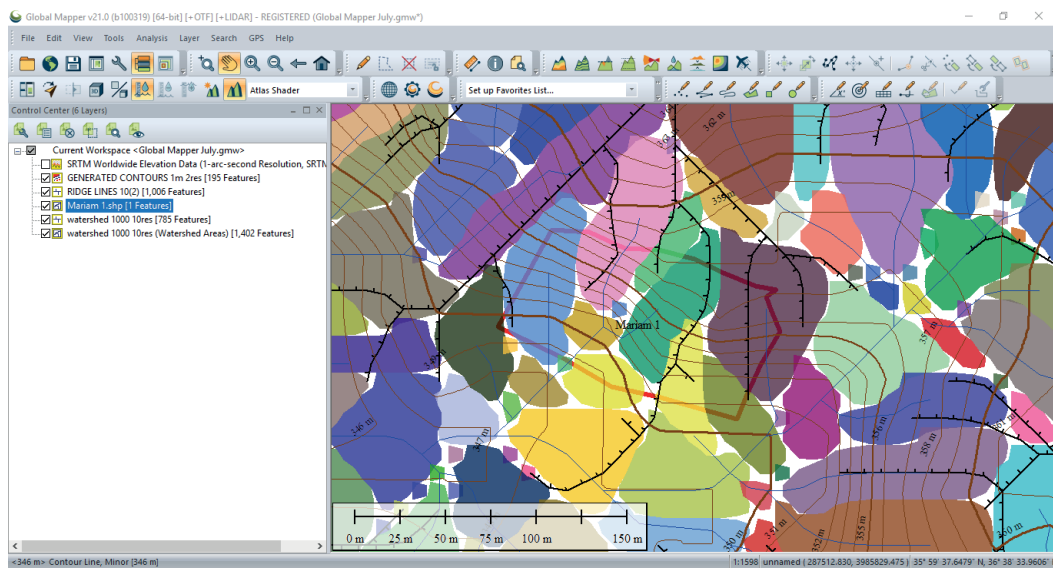
Flood Response Guidelines

Following multiple reports of flood incidents in IDP sites in north-west Syria, SNFI has prepared *Flood Classifications and Effects on IDP Sites in north-west Syria* which were shared and published on the cluster website.

This document examines different levels of floods, including the impact, damage and likelihood; and aims to provide possible flood response interventions accordingly. It also includes technical guidance on developing and planning drainage systems in IDP sites, as well as useful links for further tutorials.

One of the priorities for SNFI is to improve the new IDP settlements ahead of winter to ensure that drainage and flood mitigation measures are in place before the weather conditions deteriorate.

Site planning trainings have provided further support to guide partners' interventions specifically in regard to terrain analysis and water shed analysis. One aspect that these two training sessions provide guidance on is how water flows across the site thus informing the designer where not to place tents. Related upcoming trainings focus on drainage dimensions, road construction and water supply networks. Additional details on site planning trainings, including previous recordings, are available from the cluster website.



Watershed analysis and ridge analysis, IDP site Mariam. 1 with Global Mapper.



Drainage interventions in IDP sites. Images credit: IOM

Activities in Progress, Stock and Gaps as of mid-August 2020



Tents

550,713
people targeted

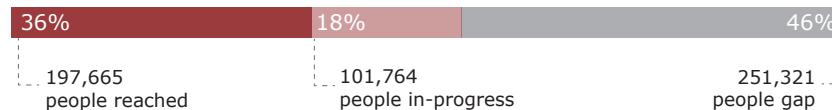


112,943
tents required/
planned for



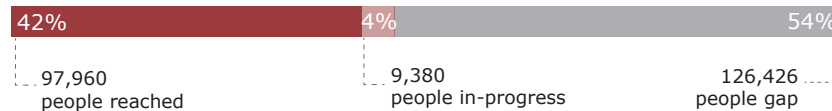
Infrastructure in IDP Sites

550,750
people targeted



Shelter Rehabilitation

233,802
people targeted



NFI Kits

1,264,878
people targeted



269,706
household NFI kits
required



- [Shelter NFI Cluster website](#)
- [Shelter NFI Whole of Syria page](#)
- [SNFI Cluster Interactive Dashboard](#)

Contact: im.turkey@sheltercluster.org

Data source: Shelter/NFI Cluster 4Ws, CCCM Cluster, HNPAP, Ground Truth Solutions, WHO

Creation date: 28 August 2020