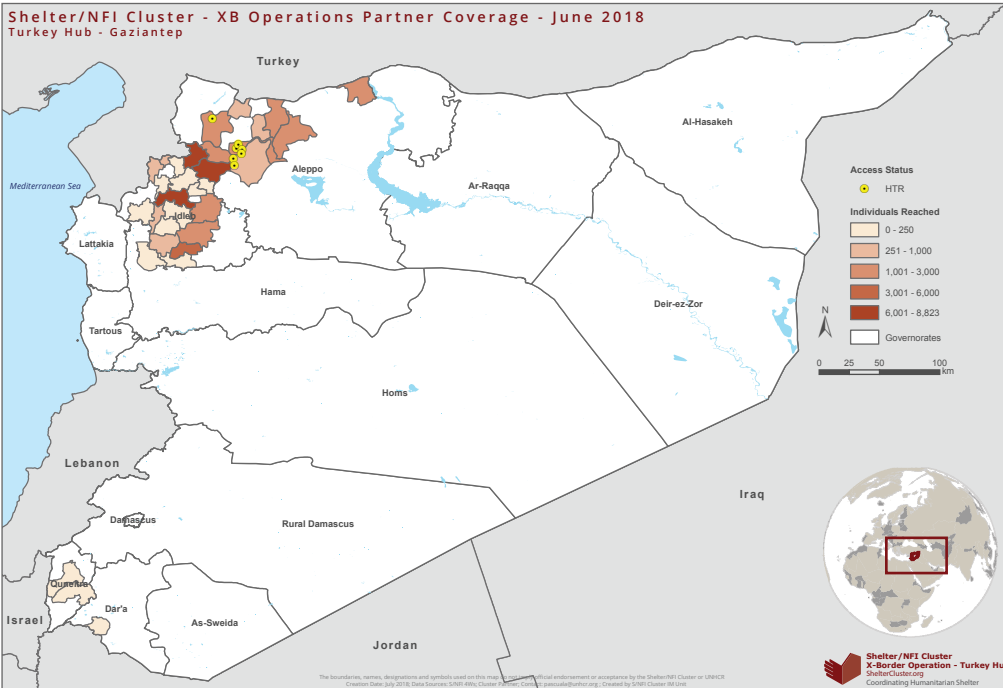


Shelter/NFI Cluster - XB Operations Partner Coverage - June 2018 Turkey Hub - Gaziantep



The Shelter and NFIs Cluster, led by UNHCR and co-led by Global Communities, coordinates the efforts of 106 total member organizations of which 65 are active. The Cluster addresses the coordination of emergency Shelter and NFI needs and promotes household and community resilience. The Cluster supports people in need within displaced, hosting and non-displaced populations by ensuring that the different modalities of interventions (in-kind, non-conditional/conditional cash or voucher) abide by the do-not-harm principle.

Highlights

Cluster Info

- The Cluster SNFI Support Officer Mr. Josef Lozej left his position and handed over to the identified candidate that will replace him, a Syrian National that will start in July.
- The Cluster initiated the PMR Mid Year Review of the HRP 2018 by requesting all cluster members updates on the progress of the activities and the level of funding so far until end of May 2018.
- The final draft of the Shelter Rehabilitation Guidelines was completed and is now pending editing and process by a graphic designer.
- An interactive dashboard has been developed to report the number of shelter identified through the Shelter Availability Mapping exercise.

Humanitarian Fund

- The 1st Standard Allocation 2018 was launched with a 1M USD envelope for the SNFI Cluster prioritizing shelter rehabilitation.
- 3 Projects were recommended for funding with 333K USD each targeting approximately 5,400 individuals.
- 1 recommended project withdrew from the allocation therefore 333K USD will be carried over to the 2nd Standard Allocation due to be called during July 2018.

Evacuations

- No significant displacements and arrivals took place during June

Cluster Priorities

- Update the NFI Guidelines in time to start winter planning
- Finalize the Shelter Rehabilitation Guidelines
- Finalize preparation of the SNFI Needs Assessment 2019
- Update the Cluster Access Map
- Initiate the winterization planning process for the upcoming winter 2018/19

Challenges/Gaps

- Continuous and unpredictable displacements
- Limited resources vs increasing needs
- Depleted shelter capacity in Idlib
- Limited shelter response capacity (funds & resources)
- Cash transfer restriction from Turkey into NW Syria

Key progress indicators



4.2M

4.7M NFI

People in need (WoS)

4.1M

People targeted (WoS)

1,005,919

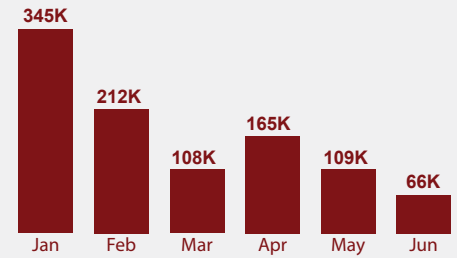
People reached (Jan-Jun)

1.4M

343,653

2.7M NFI

662,266



65,805



People reached from Turkey hub in June 2018

49,709 NFI

16,096

11,709

Beneficiaries reached with cash / voucher in June

36 Members reported activities in June

32 Members implemented NFI activities

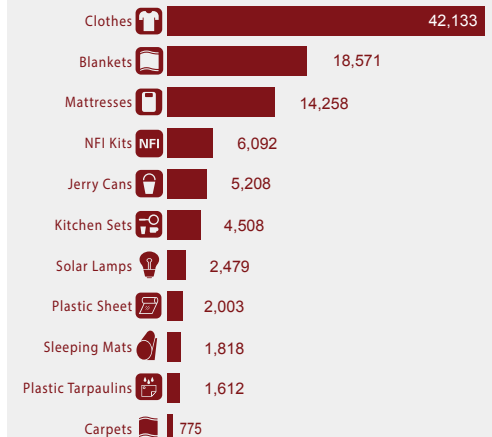
8 Members implemented shelter activities

32 Sub-districts reached in May in 5 governorates

26 Sub-districts reached with NFI activities

18 Sub-districts reached with shelter activities

NFI: Items distributed in June



Shelter: Items distributed in June

Shelter kits 747

Tents 228



Lead agency: UNHCR
Cluster coordinator:
Angel Pascual, pascuala@unhcr.org

SNFI Cluster Interactive Dashboard:
<https://goo.gl/xLVWCj>

Shelter NFI Whole of Syria page:
<https://www.humanitarianresponse.info/en/operations/whole-of-syria/shelternfi>

Shelter NFI Cluster website on GSC:
<http://sheltercluster.org/response/x-border-operation-turkey-hub>

Humanitarian Need Overview 2018:
https://reliefweb.int/sites/reliefweb.int/files/resources/2018_syr_hno_english.pdf

Shelter NFI Cluster public Dropbox link:
<https://www.dropbox.com/sh/n27h79mh7han22v/AAAsF1Wcl-rpg8RXbc2VcPcna?dl=0>



Co-lead agency: Global Communities
Cluster deputy-coordinator:
Hosam Aldeen Fael, hfael@globalcommunities.org

- ★ Compared to the previous month, in June the response decreased by 40%.
- ★ Compared to the same period of last year (Jan - Jun 2017), in 2018 the response increased by 2%.
- ★ SNFI Cluster beneficiary counting methodology changed in Jan 2017.