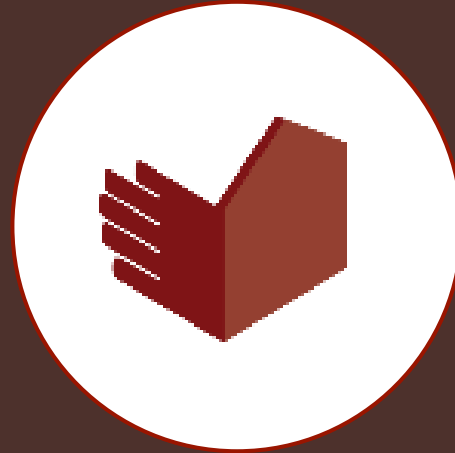


**Shelter NFI Sector Libya**

ShelterCluster.org

Coordinating Humanitarian Shelter



# **Shelter NFI monthly meeting**

**12 November 2020**  
**14:00 AM – 16:00 AM (Tripoli time)**



- 1. Updates from the sector**
  - a. Updates and bulletins**
  - b. Appeals**
  - c. Service mapping: collecting interest from partners**
  - d. Reminders**
- 2. Updates from the partners**
- 3. HRP**
  - a. Debriefing on monitoring framework**
  - b. Project Module introduction**
- 4. AOB**



**On 4 November, the two-day meeting of the Joint Military Commission (JMC) - which comprises five members each from the GNA and the LNA – concluded in Ghadamis.** The military officers agreed practical steps towards implementing the ceasefire agreement.

**On 9 November, the first virtual meeting of the UN-backed Libyan Political Dialogue Forum (LPDF) opened, bringing together representatives of the two sides.** The goal of the meeting is to generate a consensus on a unified governance framework and arrangement that will lead to holding national elections as soon as possible.

**On 7 November, the National Oil Corporation (NOC) said daily crude output had exceeded one million barrels per day.** The NOC chairman said earlier that the country was targeting 1.3 million by the beginning of 2021. At the end of October, the NOC declared the ending of several months of blockades that caused losses reaching \$10 million.

**The rate of Coronavirus cases continues to grow rapidly in Libya. During the reporting week, more than 5,300 new Coronavirus cases were recorded.** As of 8 November, the NCDC recorded a total of 69,040 cases of COVID-19 in Libya, out of whom 27,316 are active cases, 40,780 recovered and 944 deaths.

**As of 9 November, 9,506 refugees and migrants have been registered as rescued/intercepted at sea by the Libyan Coast Guard (LCG) and disembarked in Libya.** Between 3 and 5 November, a total of 421 refugees and migrants in six boats were intercepted/rescued and disembarked by LCG at the Tripoli Naval Base.



The permanent **agreement for ceasefire** in Libya between the Libyan Army of the Government of National Accord (GNA) and the Libyan National Army of the General Command of the Armed Forces was signed below by their authorized representatives and witnessed by the United Nations Support Mission in Libya (UNSMIL) **English and Arabic version available**

- Health Sector Bulletin October
- Libya COVID update # 18 by WHO
- REACH Situation Overview JMMI September
- OCHA bulletin September
- UNHCR Monthly update September
- UNICEF Monthly Update September
- IOM Monthly Update September
- IOM Libya's [Displacement Tracking Matrix \(DTM\) Mobility Restrictions Dashboard #8 \(01 - 30 September 2020\)](#).
- [IOM Libya's Displacement Tracking Matrix \(DTM\) Update on COVID-19 Mobility Restrictions' Impact on Vulnerable Populations on the Move.](#)

**WFP** intends to launch a Request for Proposal (RFP) for the provision of food assistance to IDPs, returnees, non-displaced people and migrants most severely affected by the conflict in Libya

Interest to participate in the 2021 RFP process by **23:59 hrs Libya time of 12 November 2020** by submitting the completed NGO Profile and supporting documents (for new Partners)

WFP will consider the project proposals submitted with complete packages no later than **23:59 hrs Libya time of 25 November 2020**.



## **GSC Annual Meeting 2020 - October 1-29**

### **Sessions for Country Updates**

The objective of these sessions is to provide an update of the shelter situation in given country, an overview of the response strategy, and highlights of the main needs and gaps to the participants.

**The SNFI sector presented the Libya operation related to the sector on October 21.**

**The presentation will be uploaded on the GSC portal**

**<https://www.sheltercluster.org/global-shelter-cluster-annual-meeting/>**



### From OCHA East

- ON 8 November heavy rainfall was reported in **Al Jabal Al Akhdar Mantikas**, leading the municipal authorities to declare a State of Emergency.
- Affected areas: **Albayda**, several houses inundated including Al-Thawra Hospital in Albayda city, blockage of drainage channels in most of the city streets
- Affected families; **36 families** from Labraq and **240 families** from Albayda and its surrounding. (MOSA prel. Info)

### Findings from DTM's team on the ground :

- Reportedly, the rainfall has not resulted in substantial displacement, although a few families in Alghariga area had left their houses to temporarily stay with extended family in other neighborhoods but returned as of 10 November.
- The following areas in Al Bayda were affected most severely: Rouifa Al-Ansari (رويفع الأنصاري), Al-Khanssa (الخنساء), Alghariga (الغريقة), Assinaeey (الصناعية), Entercima Blocks (عمرات انترسيما). Heavily affected local population is estimated around 250 HH in these areas.
- Local community is asking primarily for NFI assistance (waterproof covers, mattresses/blankets, heaters, clothing), hygiene items and to a lesser extent food assistance
- According to media reports, the Government allocated LYD 10 million to respond to the current situation

**RRM member** agencies have agreed to respond to the below case load ( 252HH) in Al Bayda

**REACH** has planned to conduct the first rapid assessment, and it searching for partners willing to collaborate in to collect data in the area to coordinate the assessment.

**WFP – VAM** is available to work with partners on the ground and plan to carry out an assessment



In the last ACG-south meeting, OCHA shared the below two potential clashes in South Libya

### **Potential Clash No. 1: Military Escalation in Al-Jufra Municipality :**

The total population in Al-Jufra is estimated: 62,820 people.

The possible number of affected people: 12,250 people.

The possible number of people in need: 5,000 people

The probability of occurrence (**high**) while the expected humanitarian Impact is ( **medium** ).

Displacement is expected to take place from Al-Jufra to South and East Libya. It is expected that the displaced people to the south will stay in **Sebha and Wadi Al-Shati**.

The road may not be easy to reach to the south as no clear indication in case of military escalation will take place.

### **Potential Clash No. 2: Continued attacks by ISIS group on Ghudwa area (70 KM south Sebha):**

Total population: 12,000 people.

The possible number of affected people: 6,352 people.

The possible number of people in need: 4,121 people.

The probability of Occurrence (**Low – Medium**) while the expected humanitarian Impact is (**low**). ISIS terrorist groups attacked the Ghudwa area to control it recently.

The continuity of ISIS attacks will cause deterioration of the security situation in the Ghudwa area.

Displacement movement is expected to take place from Ghudwa **to Sebha municipality**

OCHA is checking for capacities and readiness to provide the needed support in case any of the above escalations will happen.

**SNFI partners** could fill out the table below accordingly and send it back to us, copying Muna the South ACG coordinator by **max COB of Thursday 5, November**.



OCHA is checking for capacities and readiness to provide the needed support in case any of the above escalations will happen.

**SNFI partners** willing to support are request to fill out the table below **max COB of Thursday 5, November.**

Sector	Partner	Assistance	Number of people to assist	Storage location
Food				
<b>SNFI</b>	UNHCR	1000 *2		Misrata - Benghazi
Health				
WASH				
Education				
Protection				
Logistics				



## Agenda item 3: Possible preparedness of west hotspots (Tarhouna – Zawia – Tripoli)



### TARHOUNA

**Total Population:** 155,353

**Possible scenario:** Tribal clashes/ internal communal conflicts

**Humanitarian impact based on discussions with JARH/UNSMIL:** **High**

**Context:** Following clashes that took place in late September, There is competition between the local forces over who will rule the city. Previously, Families with ties to the LNA were forced to displace as their political affiliation put them at risk. While tensions between armed forces are still ongoing, the latest large displacement reported was on June 2020. if tensions continue to rise, families with political ties to either side of the conflict may be driven out of the city gradually.

**Asks:** to capture current ongoing response, possibility to scale up in areas of displacement







ECG Joint Response Matrix - Detention Centers - Disembarkation Points													
Please read the Instructions before filling the template.													
Who		Where	When	What			Total reached	SADD					
* Organization / Agency	Implementing Partner (IP)	* Location DC/DP	* Reporting Date MM/DD/YYYY	* Activity	Activity details	Status	*Total reached	*Girls - Children reached (Female under 18)	*Boys - Children reached (Male under 18)	*Women - Adults reached (Female 18 or above)	*Men - Adults reached (Male 18 or above)		
UNHCR	IRC	DP - Tripoli Naval Base	4/15/2020	Health - Medical Assistance	Rescue at Sea Interventi	Completed	51	2	1	8	40		
UNHCR	IRC	DP - Tripoli Naval Base	4/15/2020	WASH - Hygiene Kit	Rescue at Sea Interventi	Completed	51	2	1	8	40		
UNHCR	LibAid	DC - Kufra	4/18/2020	NFI - Clothes		Completed	100		2	2	96		
UNHCR	LibAid	DC - Albaydha DC	4/26/2020	NFI - Clothes		Completed	30				30		
UNHCR	LibAid	DC - Shahat	4/26/2020	NFI - Clothes		Completed	12				12		
UNHCR	LibAid	DC - Tobruk DC	4/26/2020	NFI - Clothes		Completed	27			4	23		
UNHCR	LibAid	DC - Kufra	5/7/2020	NFI - Clothes		Completed	152				152		
UNHCR	LibAid	DC - Kufra	6/3/2020	NFI - Clothes		Completed	120				120		
UNHCR	LibAid	DC - Albaydha DC	6/25/2020	NFI - Clothes		Completed	23				23		
UNHCR	LibAid	DC - Shahat	6/25/2020	NFI - Clothes		Completed	29				29		
UNHCR	LibAid	DC - Kufra	6/30/2020	NFI - Clothes		Completed	145				145		
UNHCR	LibAid	DC - Kufra	8/27/2020	NFI - Clothes		Completed	110				110		



PROTECTION    Contacts    Events    Meeting Documents    Reports and Maps    Assessments

**PROTECTION SECTOR AND SUB-SECTORS - SERVICE MAPPING**

Protection Sector Libya    Online Service Mapping Tool    Summary Dashboard - 3 September 2020

9 Makhia    16 Saladya    12 Agencies    237 Services

Mahtika: Al Jabal Al Gharbi, Aljbara, Aljbara, Benghazi  
Saladya: Tefren, Al Maya, Jarabou, Benghazi

Sector/Sub Sector: Activity  
Child Protection: Awareness raising on child protection risks  
Child Protection: Awareness raising on child protection risks  
Child Protection: Awareness raising on child protection risks  
Child Protection: Awareness raising on child protection risks  
Child Protection: Awareness raising on child protection risks  
GBV: Awareness raising on GBV  
GBV: Awareness raising on GBV  
GBV: Awareness raising on GBV  
Protection: Awareness sessions  
Protection: Awareness sessions

Service Mapping (Libya)    My account    Log out

Instructions    My Service Delivery Points    My Focal Points    My Services    <Service Mapping>

Home

Organization

- ACTED (18)
- Cevis (26)
- Danish Refugee Council (11)
- DCA (12)
- Humanity & Inclusion (3)
- International Medical Corps (73)
- International Rescue Committee (27)
- INTERSOS (7)
- IOM (25)
- Norwegian Refugee Council (21)
- REACH (1)
- UNHCR (10)

Locations

- East (48)
- South (30)
- West (156)

Service Mapping

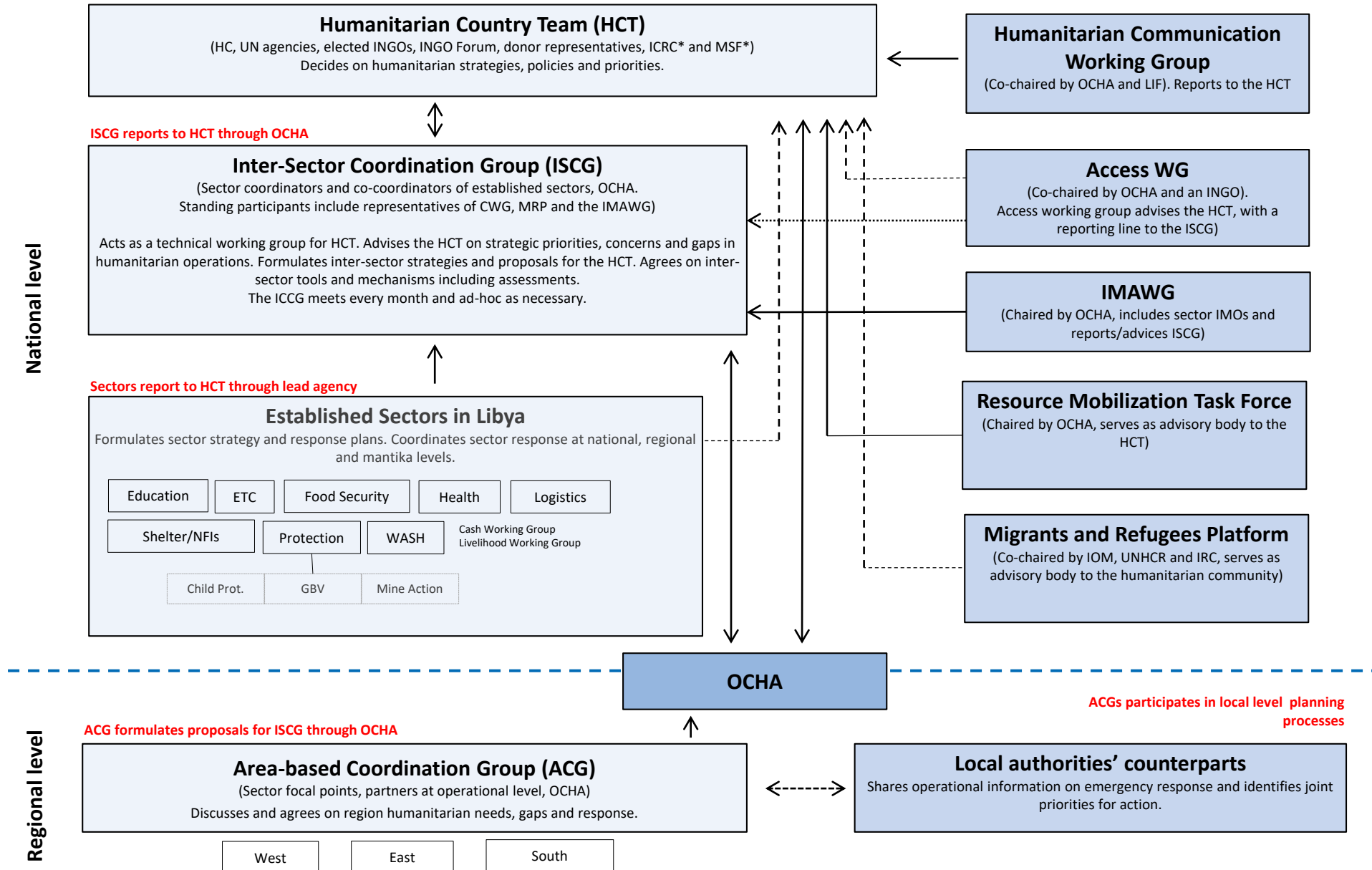
Search    Apply    Reset

Services	Location	Contact	Target Beneficiaries	Population Group	Last Modified
Mobile Protection Monitoring teams On Call 24 hours - Yes Danish Refugee Council - Office	West Tripoli Tripoli	Mohammed Souf +218 91-1333132 <a href="mailto:mohammed.souf@dr.org">mohammed.souf@dr.org</a>	0-4 Male, Female 5-9 Male, Female 10-13 Male, Female 14-17 Male, Female 18-24 Male, Female 25-50 Male, Female 60+ Male, Female	IDP returnees, IDPs, Migrants, Refugees	21 September 2020
Mobile Protection Monitoring teams			0-4 Male, Female 5-9 Male, Female 10-13 Male, Female		

Interested partners kindly send email to the Sector

# Humanitarian Coordination Structure in Libya

September 2019



\*in its observer capacity



## Localization - Potential SNFI Area coordinators key notes

- Ensuring presence on ground
- Timely information sharing
- Better coordination
- More efficient and timely response
- Engagement of local partners & capacity building

### SNFI Area Coordinators should:

- Proven expertise in SNFI
- Feasible % of dedicated time
- Reporting line SNFI National Coordinator
- Humanity, neutrality, impartiality, independence

### Collection of candidatures



### Reminders:

1. **COVID-19** - partners are strongly encouraged to report their COVID-19 activities through the Kobo tool – <https://ee.humanitarianresponse.info/x/#4rEvl7vj>. Partners can report at any time and all reporting can be viewed through online portal - <https://bit.ly/2E9N2h1>
1. **Activity info** - partners are requested to report their activities HRP and no-HRP on Activity info – Kobo platform, monthly deadline the 5<sup>th</sup> of each month. Please contact our SNFI IMO Alen Chalak ([chalak@unhcr.org](mailto:chalak@unhcr.org)) for support when needed.
1. **FTS** Financial Tracking system. HRP partners are requested to report and update against HRP, when applicable, the funding status on FTS.
1. **Humanitarian Access Constraints** – reporting template for the 3 Areas, South, East, West due by COB 30 September 2020
1. **SNFI mailing list** - partners are kindly invited to inform about the replacement of their staff focal point or interested in SNFI communicating their email addresses in order to allow the update of the mailing list.



## **Monthly updates from all partners.**

- a. key updates, challenges and issues
- b. HRP progress
- c. COVID response
- d. East, West, South specific topics
- e. Winterizing plan



**HRP**

**a. Monitoring framework –final envelope**

**a. Project Module introduction**



**SHLETER AND NFI SECTOR**

Activity	Output Indicator	In need	Target	Costs	Means of verification	Frequency of update
<b>Sector Objective 1: Provide humanitarian life-saving and life-sustaining shelter and NFI support</b>						
1.1. Provision of core and essential NFIs	1.1.1. # of people whose core and essential NFI needs are met	270,921	82,090	6,317,881	4Ws	Monthly
1.2. Provision of seasonal and supplementary NFIs	1.2.1. # of people whose seasonal and supplementary NFI needs	121,750	10,343	1,881,096	4Ws	Monthly
1.5. Rental assistance provision	1.5.1. # of people assisted with rental assistance.	40,492	324	132,152	4Ws	Monthly
1.6. Rehabilitation of collective centres	1.6.1. # of people assisted by rehabilitated collective centers	1,778	560	365,120	4Ws	Monthly
1.7. Upgrading of unfinished buildings	1.7.1. # of people assisted by upgraded unfinished buildings	39,088	1,075	674,120	4Ws	Monthly
<b>Sector Objective 2: Contribute towards the resilience and social cohesion of communities and households by improving housing and related community/public infrastructure</b>						
2.1. Rehabilitation of damaged houses	2.1.1. # of people assisted by rehabilitated damaged houses	144,853	3,950	3,340,611	4Ws	Monthly
2.2. Repairing/rehabilitation of community/public infrastructure	2.2.1. # of people assisted by repaired/rehabilitated	65,467	7,750	578,780	4Ws	Monthly
2.3. Repairing/rehabilitation of community/public buildings	2.3.1. # of people assisted by repaired/rehabilitated	44,630	2,500	147,512	4Ws	Monthly
<b>TOTAL ESTIMATED COSTS</b>				<b>13,437,272</b>		



9 November	HC endorsement of GHO inputs for Libya	HC
9 November	GHO submission to HQ	OCHA
11 November (tentative)	Sectors to provide the monitoring framework to OCHA to set the Project Module (PM) <i>Disaggregated by Mantika and population group</i>	Sectors
12 – 20 November (tentative)	HNO draft to be shared with ISCG and HCT for comments	ISCG / HCT
16 November (tentative)	PM draft for consultation set up	OCHA
18 November	PM tutorial for sectors and partners	OCHA
19 November (tentative)	PM opens for partners to upload projects	OCHA / Partners
By 30 November (tentative)	Vetting process done	Sectors
30 November (tentative)	HNO publication	OCHA
1 December (tentative)	PM closes	OCHA
1 December	GHO Launch by ERC	OCHA HQ
1 - 15 December	Bilateral consultations: HRP consultations with national stakeholders	All
4 December	Sectors to provide the monitoring framework to OCHA to set <i>ActivityInfo</i> disaggregated at <i>baladiyah</i> level and population group	Sectors
12 - 17 December (tentative)	HRP draft for comments from ISCG and HCT	ISCG / HCT
End December (tentative)	HRP publication	OCHA



## PROJECT MODULE LAYOUT

### 1. Basic information:

- a. Project title, start date and end date
- b. Project summary
- c. Submitting organizations, Implementing partners, contacts

### 2. Response plan:

- a. Needs analysis
- b. Activities
- c. Priority level: High, medium, low
- d. Protection risk analysis
- e. Mitigation measures
- f. AAP/ Accountability mechanisms
- g. GAM/Code number
- h. Cash (Y/N), targets and % resources for cash and vouchers
- i. (Funding %) Requirements per region: East, South West, all country

### 3. Country (locations as drop down menu per region)

- a. East, mantika and baladiyah
- b. South, matika and baladiyah
- c. West, mantika and baladiyah
- d. All country



**4. Sectors:**

- a. Caseload: PiN, target, project target including SADD (where it is not broken down the Libya percentages will be applied)
- b. Objectives (drop down menu); Indicator/s (drop down menu), Target (overall), project target

**5. Budget:**

- a. Total cost
- b. Cost allocated per partner and sectors as necessary
- c. Detailed budget based on main activities listed in the monitoring framework (mandatory as drop menu)
- d. Other costs like: staff, running costs, security costs, admin costs... to be added as necessary

**6. Comments section** for the coordinators to provide feedback for review

**Blue:** Comes from the system (from the monitoring framework). Only need to include the project estimated target per each objective and indicator.

**Red:** New section that comes from the monitoring framework to ensure more accountability and detail on how the funding would be expend. SADD information is a commitment at global level.



ID	ADM2_Manti (EN)	ADM2_Pcode	Population group	SEVERITY Ref (Ind 1)	SEVERITY Ref (Ind 2)	Average	Mantika	Severity
1	Al Jabal Al Akhdar	LY0106	IDPs	1	3	2	Al Jabal Al Akhdar	2
2	Al Jabal Al Gharbi	LY0216	IDPs	2	4	3	Al Jabal Al Gharbi	3
3	Aljbara	LY0212	IDPs	3	4	4	Aljbara	4
4	Aljufra	LY0317	IDPs	4	3	4	Aljufra	4
5	Alkufra	LY0107	IDPs	3	3	3	Alkufra	3
6	Almargeb	LY0210	IDPs	3	3	3	Almargeb	3
7	Almarj	LY0102	IDPs	4	4	4	Almarj	4
8	Azzawya	LY0213	IDPs	2	4	3	Azzawya	3
9	Benghazi	LY0103	IDPs	3	3	3	Benghazi	4
10	Derna	LY0101	IDPs	3	3	3	Derna	3
11	Ejdabia	LY0105	IDPs	3	3	3	Ejdabia	3
12	Ghat	LY0321	IDPs	4	1	3	Ghat	2
13	Misrata	LY0214	IDPs	3	4	4	Misrata	4
14	Murzuq	LY0322	IDPs	4	2	3	Murzuq	3
15	Nalut	LY0209	IDPs	2	4	3	Nalut	3
16	Sebha	LY0319	IDPs	4	3	4	Sebha	3
17	Sirt	LY0208	IDPs	4	3	4	Sirt	4
18	Tobruk	LY0104	IDPs	3	4	4	Tobruk	4
19	Tripoli	LY0211	IDPs	3	3	3	Tripoli	4
20	Ubari	LY0320	IDPs	4	2	3	Ubari	3
21	Wadi Ashshati	LY0318	IDPs	4	2	3	Wadi Ashshati	3
22	Zwara	LY0215	IDPs	2	4	3	Zwara	2
23	Al Jabal Al Akhdar	LY0106	Returnees	4	4	4		



A	B	C	D	E	F
<b>Risks</b>	<b>Probability</b>	<b>Impact</b>	<b>Areas/ population groups at most risk</b>		<b>Rational (not included in graphic)</b>
Re-escalation of conflict		<b>SEVERE</b>	* All areas/population groups		Less likely with ceasefire and re-engaged political discussions
Outbreak of hostilities		<b>SEVERE</b>	* Sirt (most immediate but all areas) * All population groups		Less likely with ceasefire and re-engaged political discussions. Most immediate areas for outbreak is Sirt where military build-up
Insecurity and criminality		<b>MODERATE</b>	* Southern region * Migrants and refugees		Southern region were vaccum of security exists Likely along migration routes, smuggling to continue
Political fragmentation/ functionality		<b>MODERATE</b>	* All areas * Women and girls * Minority groups * Migrants and refugees		Potentially positive trend given ceasefire and ongoing negotiations Likely to be more a long term issue to address Impacts on service delivery but affects funding allocation and issues with legislation that protect vulnerable groups
COVID-19		<b>HIGH</b>	* All areas * Elderly and people with pre-existing conditions * People living in crowded conditions (e.g. IDPs, migrants, refugees)		Lack of supplies and robust health system to cope People not following prevention measures
Socio-economic situation		<b>HIGH</b>	* Low-income families * People engaged in temporary/daily labour		Less impact due to lifting force majeure COVID-19 related restrictions will continue to impact livelihoods
Decline in service delivery		<b>MODERATE</b>	* All areas * People without documentation (e.g. IDPs, returnees, migrants, refugees) * Women (due to addition movement restrictions)		Still likely to occur given political fragmentation



ProjectedPiN by populatoin group				
Population group	Affected population	PIN	Column	Column2
IDPs	392,241	172,871	0.72	124,467
Migrants	538,264	303,740	0.63	191,356
Non-Displaced	1,224,935	501,939	0.59	296,144
Refugees	46,245	46,245		-
Returnees	273,756	228,084		-
<b>Total</b>	<b>2,475,441</b>	<b>1,252,879</b>		<b>611967.33</b>
Projected PIN				<b>1,864,846</b>
Using negative coping mechanism percentages, multiplied by the PIN pop group, and added to the total PIN,				



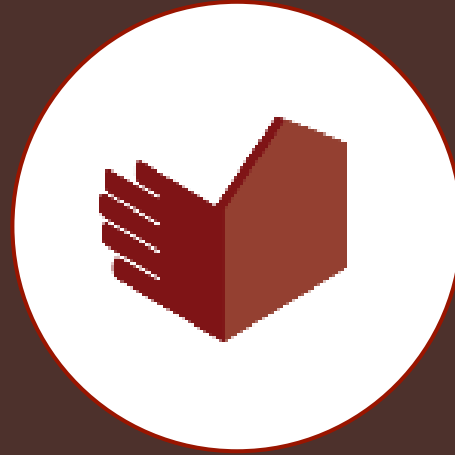
**AOB**

**Questions?**

**Shelter NFI Sector Libya**

**ShelterCluster.org**

**Coordinating Humanitarian Shelter**



**Thank you for your participation**