

2020



Shelter Cluster Yemen
ShelterCluster.org
Coordinating Humanitarian Shelter



SHELTER CLUSTER End Year Report

Foreword

2020 in Yemen was marked by the COVID-19 pandemic, which affected Shelter and Non-Food Items programs in terms of the type of interventions, cost, and timeliness of implementing certain activities. Further, following the recommendation of the Shelter Cluster, many partners adapted their Shelter and Non-Food Items distributions using responsible prevention measures, including physical distancing but with an associated cost. The fuel embargo generated inflations on certain items in addition to the transportation costs. At last, the flare-up of armed violence paired with the exceptional flood season led the cluster to increase targets for the newly affected population.

The Shelter Cluster response strategy for 2020 was focused on providing safe, appropriate shelter and essential household items to highly vulnerable families. Despite the operational constraints, the Shelter and NFI Cluster assisted 2,365,626 IDPs, returnees, and vulnerable host community members (532,581 women, 520,286 men, 657,726 girls, and 655,033 boys), representing 79 per cent of the 2,987,991 people planned to be assisted in 2020. The response delivery modality varied based on the context in different locations, 63 per cent through In-kind distributions, 36.5 per cent cash, and 0.5 per cent voucher.

The exceptional rainy season and flooding in 2020 affected 62,508 HHs, of which 52,509 HHs were identified in need of Shelter/NFI support. The assistance so far reached 25,600 HHs (49%). This assistance had the secondary effect of drying almost all contingency stocks and leaving 26,856 HHs unassisted.

In 2020, 90% of the assistance was dedicated to emergency aid, when 9% was for transitional shelter solutions and only 1% for durable solutions. These percentages revealed how the situation is stranded in an emergency mood.

Gaps in Shelter and Non Food Items are still tremendous due to several factors:

- a) The low funding level is not able to match the overall needs. [31% of funds in 2020, 79% of achievements compared to the total people targeted in the HRP].
- b) The affected population is pending assistance in some instances for several years, creating a considerable backlog that is challenging to cover in the actual situation.
- c) Addressing needs in the mid or long-term requires a more conducive environment, especially for the housing, land, and property situation coupled with substantial investment. The emergency assistance must be renewed almost every year, creating a significant caseload for recurrent aid.

It is evident that any mid-term or long-term solutions should be linked to the improvement in the operational context. Aside from the needs related to armed violence, Housing Land and Property issues is a key blockage, restricting even implementing transitional shelter on a large scale. Despite the effort to sensitize authorities, Land issues remain a driver of the conflict and do not allow to tackle shelter needs from several years perspective.

Further, funds are mainly channeled to large international organizations that faced administrative and access impediments. Small local organizations with a better knowledge of the ground are usually left behind and cannot fully contribute even if they have access to the hard-to-reach areas. The accountability of both types of partners is impeded and can be tackled only with more efforts in capacity and changes for accessing assistance. The response was also challenged with the lengthy approval processes, delaying the project's implementation.

2020 at a Glance

PEOPLE IN NEED

7.2 million ind.

PEOPLE TARGETED

3.0 million ind.

PEOPLE REACHED

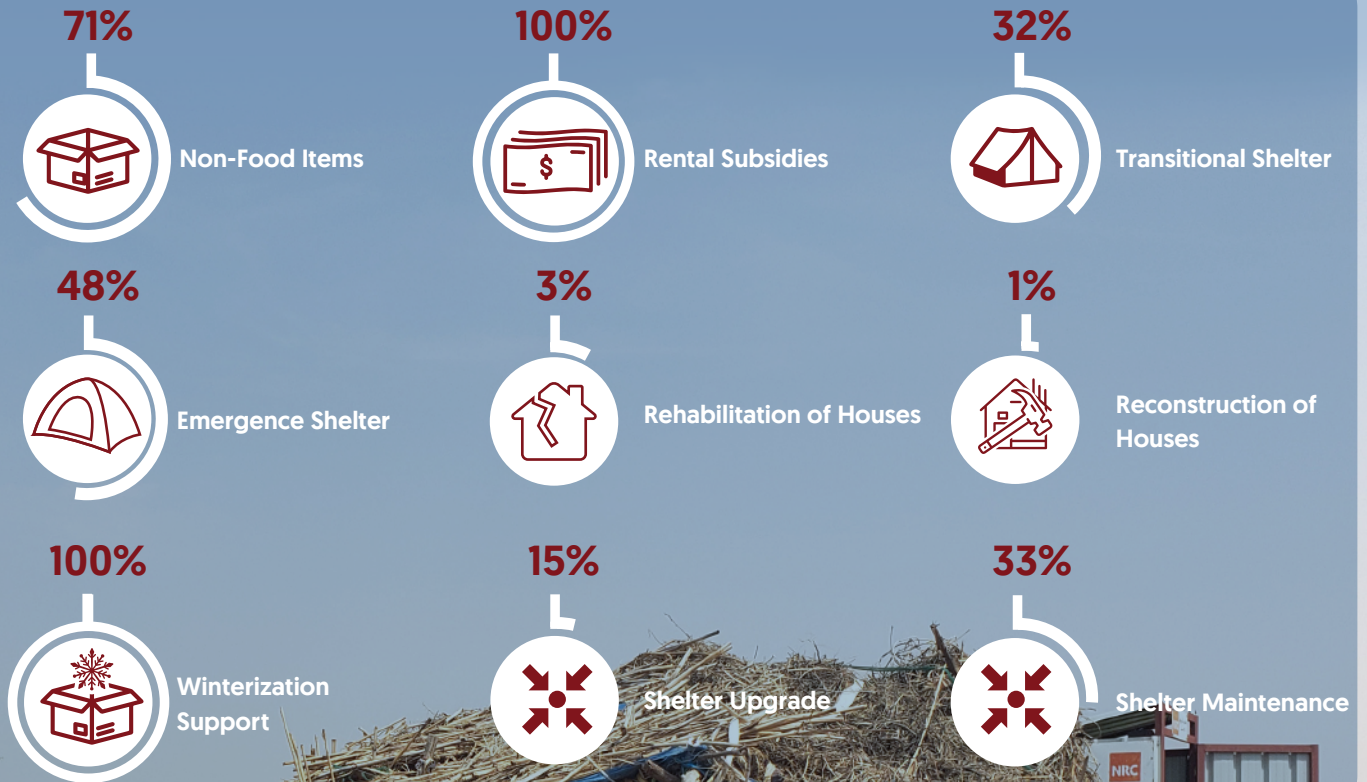
2.4 million ind.

FUNDS RECEIVED

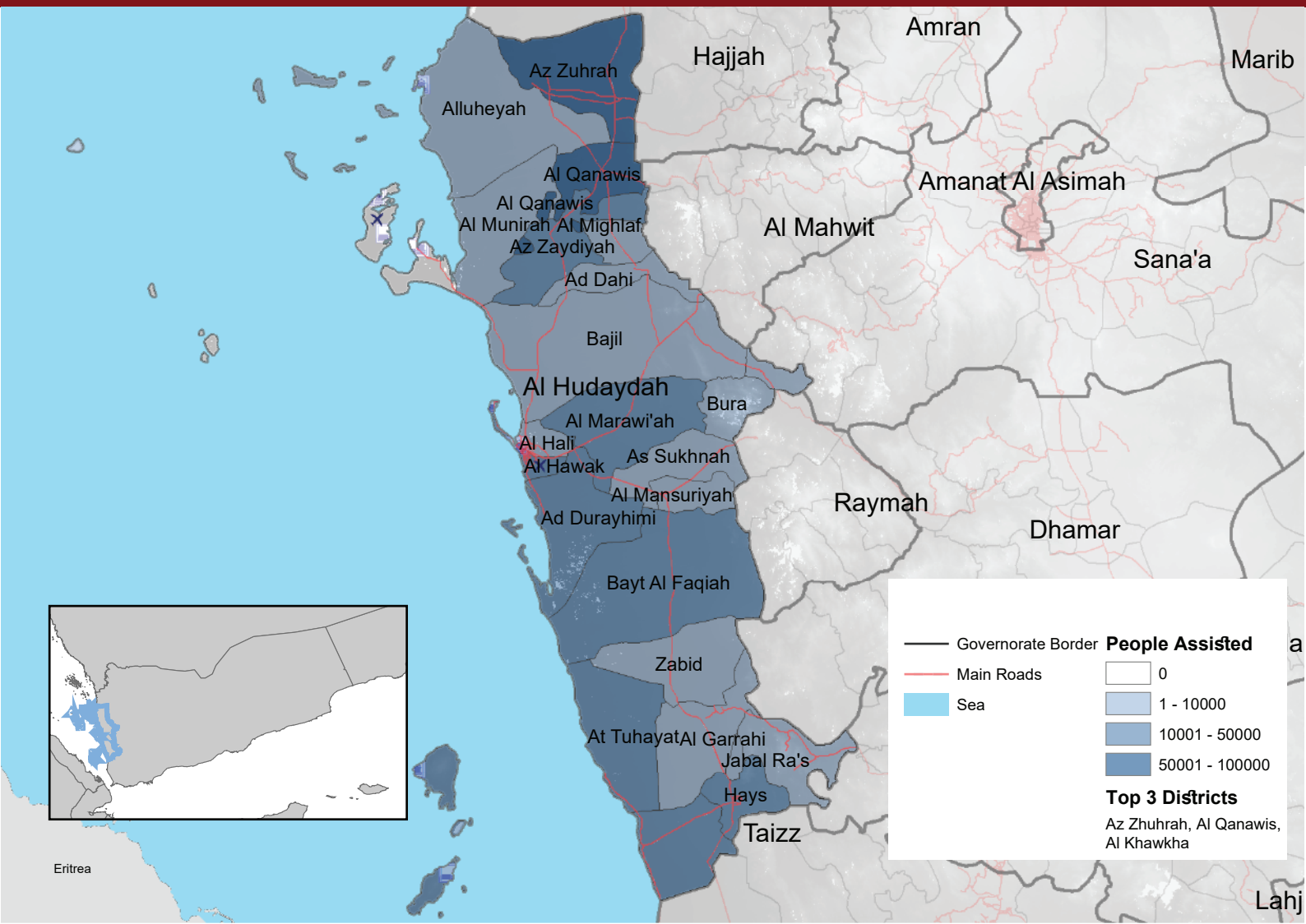
USD 72 Million*

2

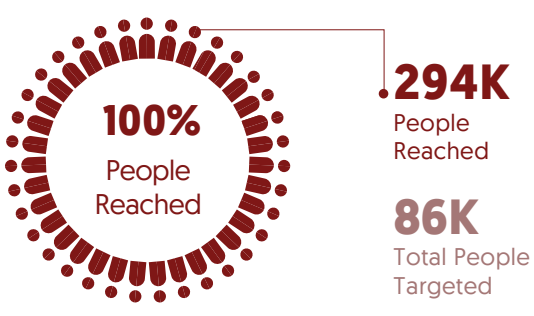
Target vs Reach



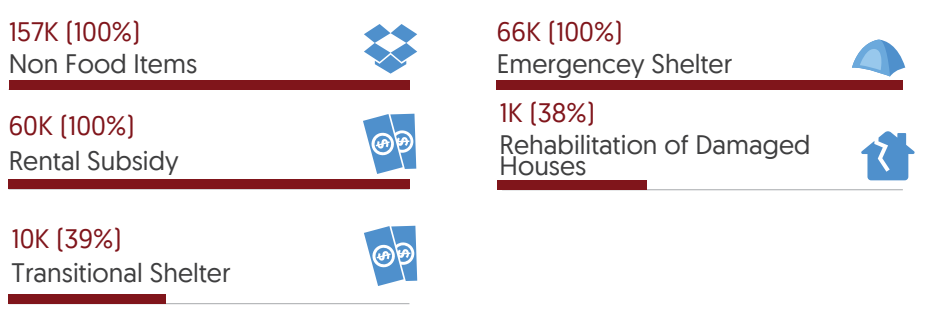
*Source: Shelter Cluster Fund Mapping



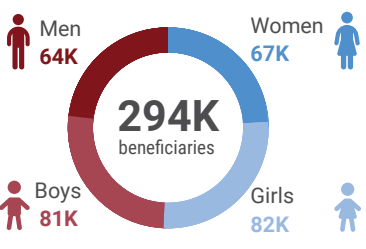
Target vs Reach



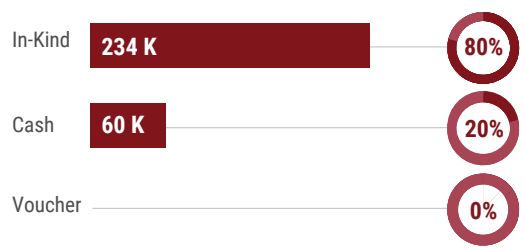
Completion of Activities (Top 5)



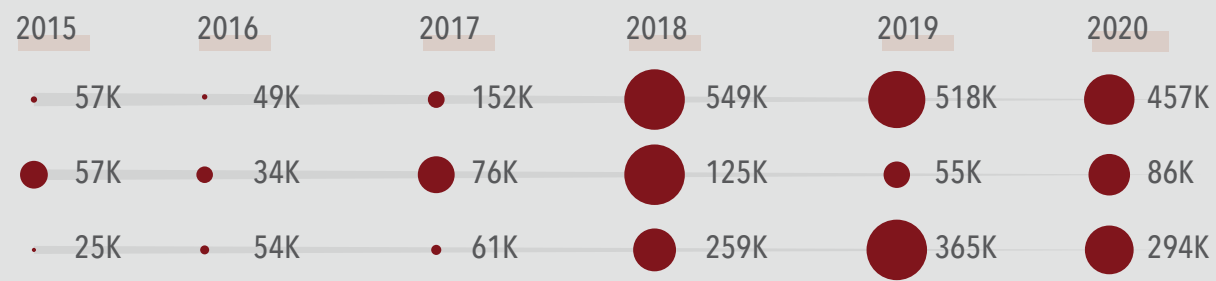
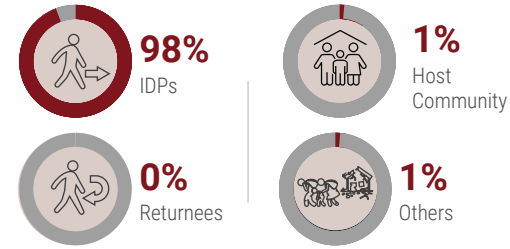
Age/Gender Breakdown

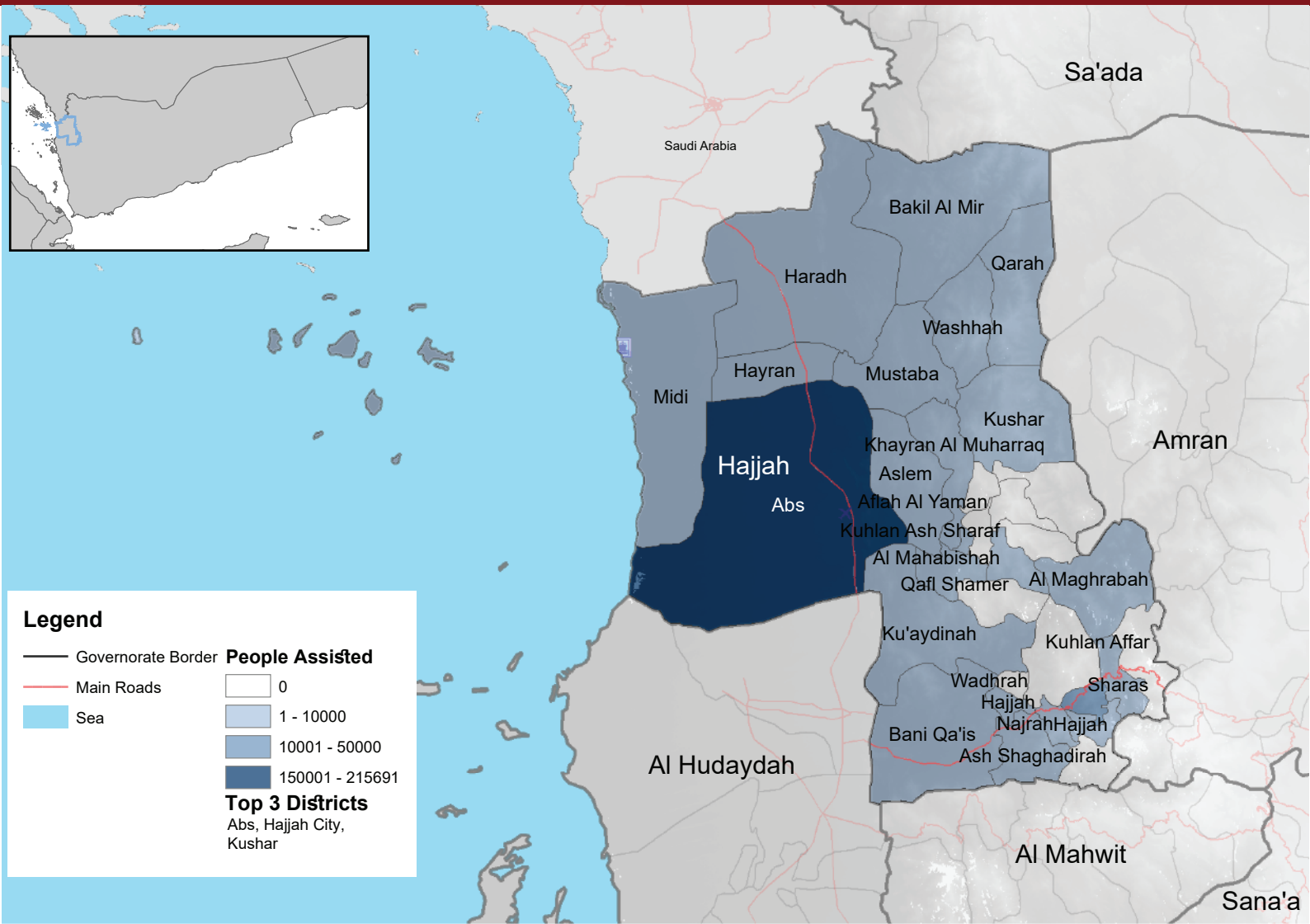


Modality of Assistance



Assistance Vs Population Groups





Target vs Reach



221K
People Reached

277K
Total People Targeted

Completion of Activities (Top 4)

115K [100%]
Non Food Items



80K [100%]
Emergency Shelter



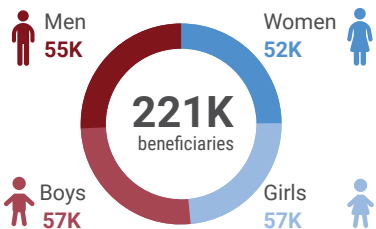
36K [49%]
Rental Subsidy



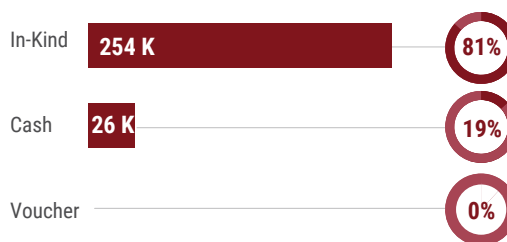
0.3K [60%]
Transitional Shelter



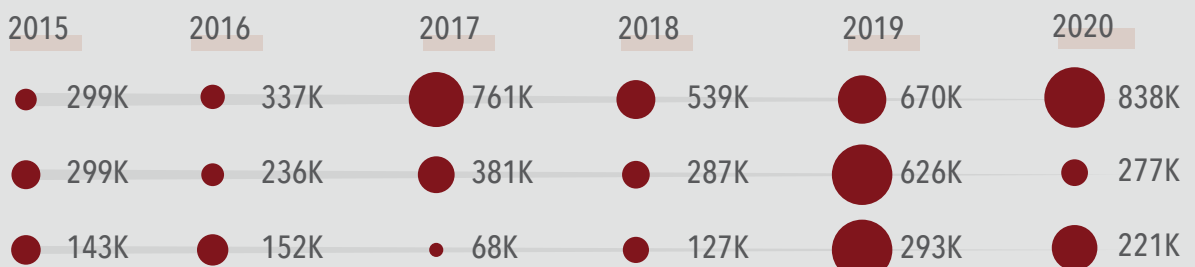
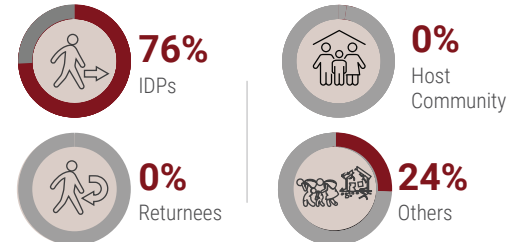
Age/Gender Breakdown

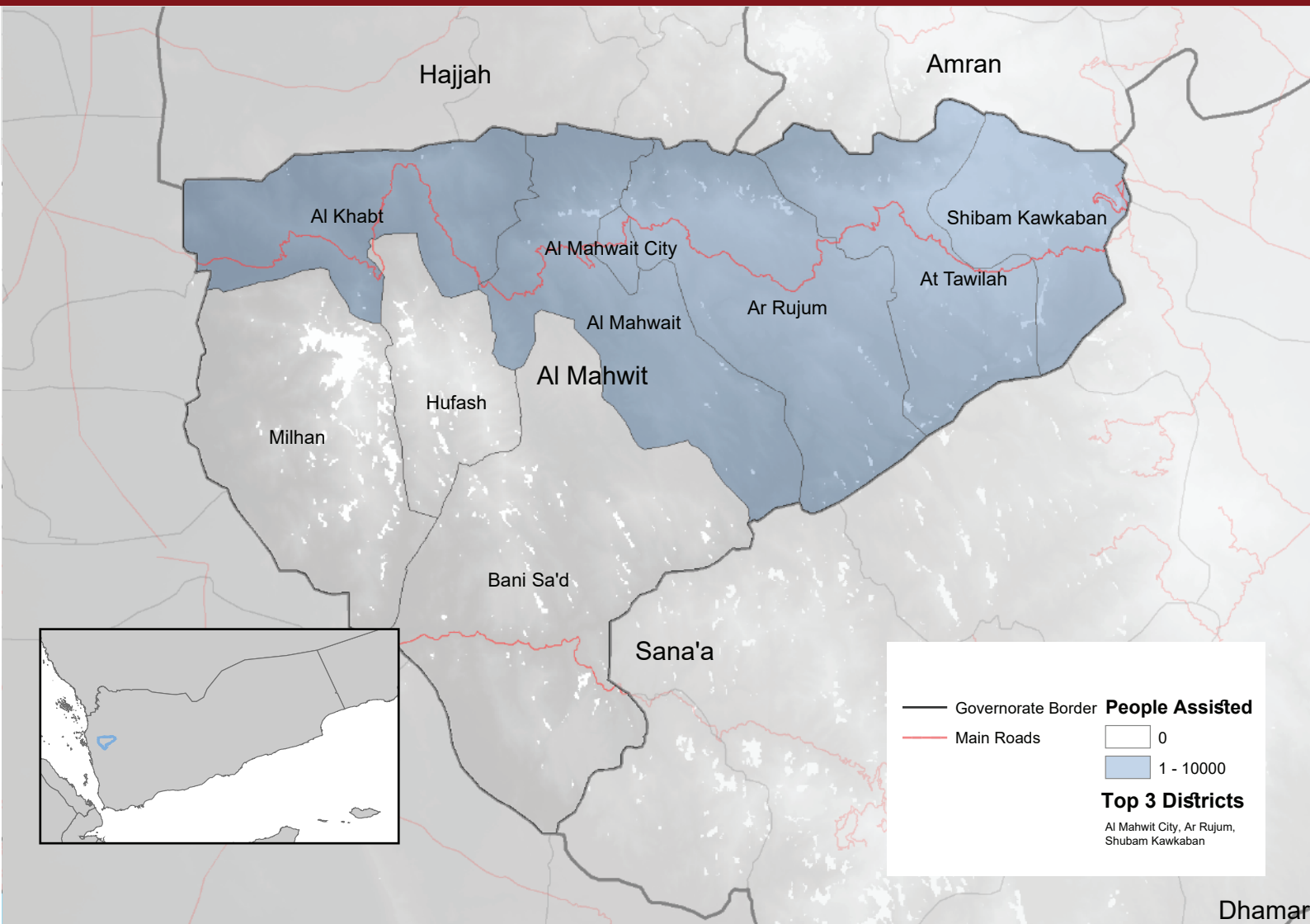


Modality of Assistance

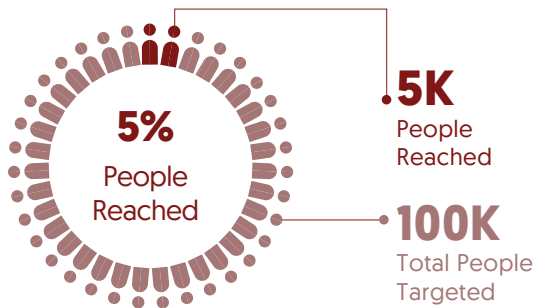


Assistance Vs Population Groups





Target vs Reach



Completion of Activities (Top 2)

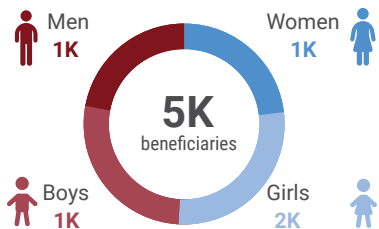
3K [5%]
Non Food Items



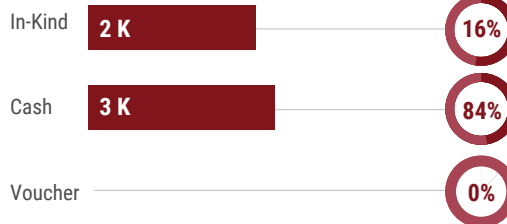
3K [14%]
Rental Subsidy



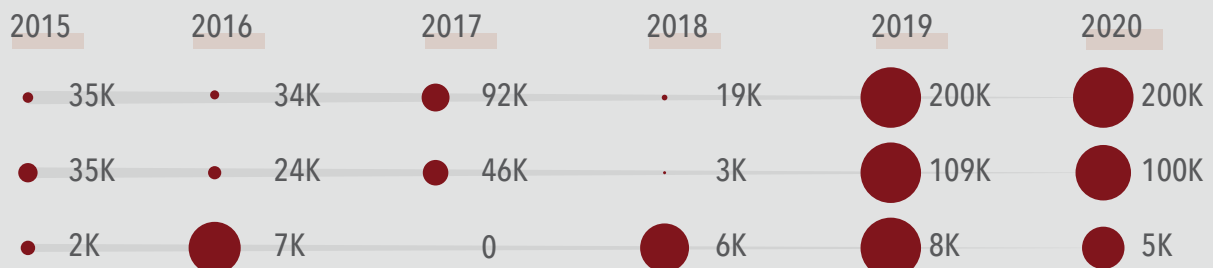
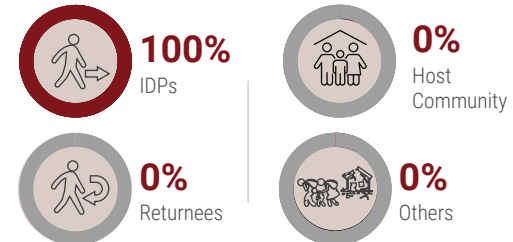
Age/Gender Breakdown

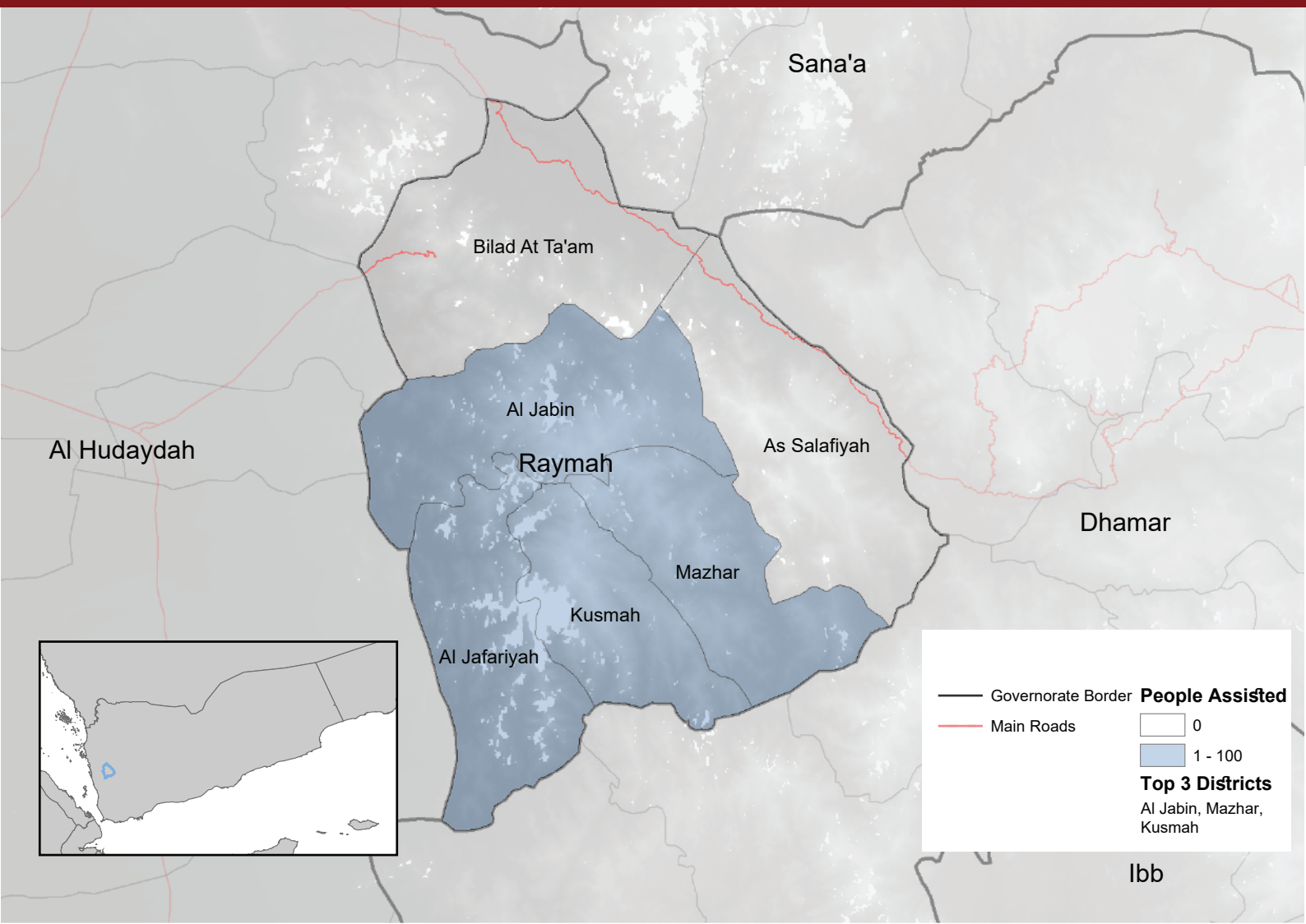


Modality of Assistance

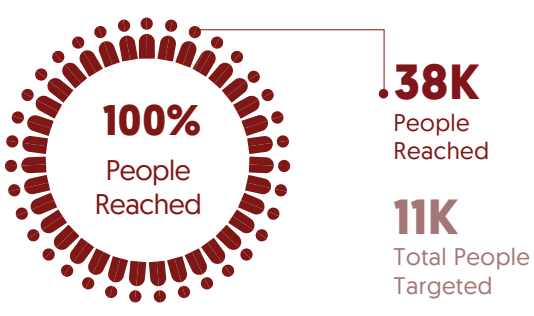


Assistance Vs Population Groups





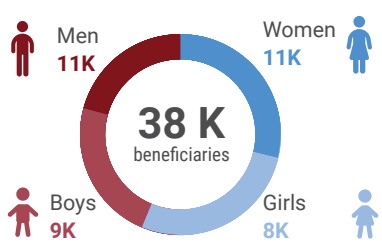
Target vs Reach



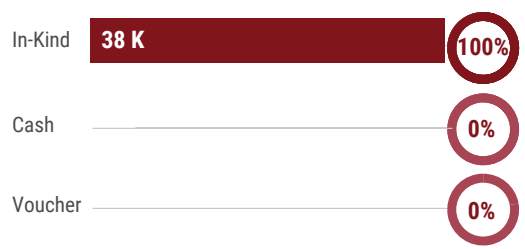
Completion of Activities (Top 2)



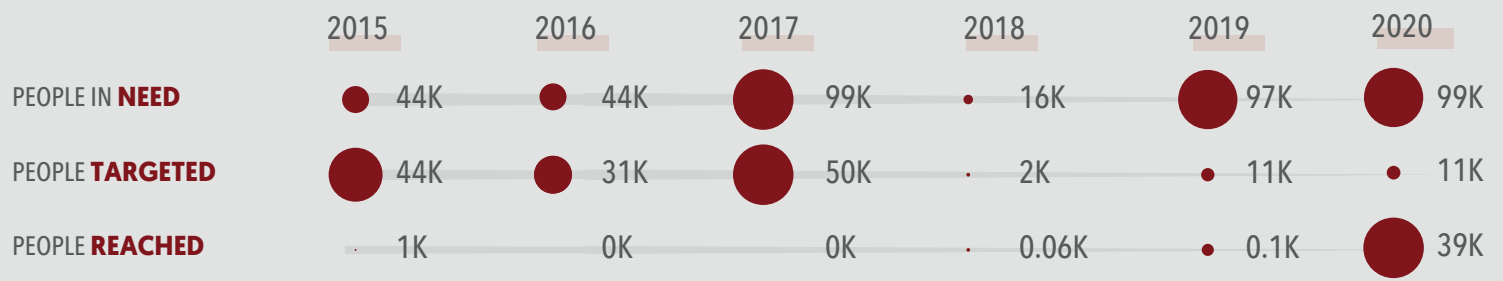
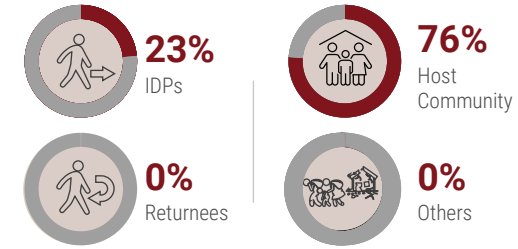
Age/Gender Breakdown

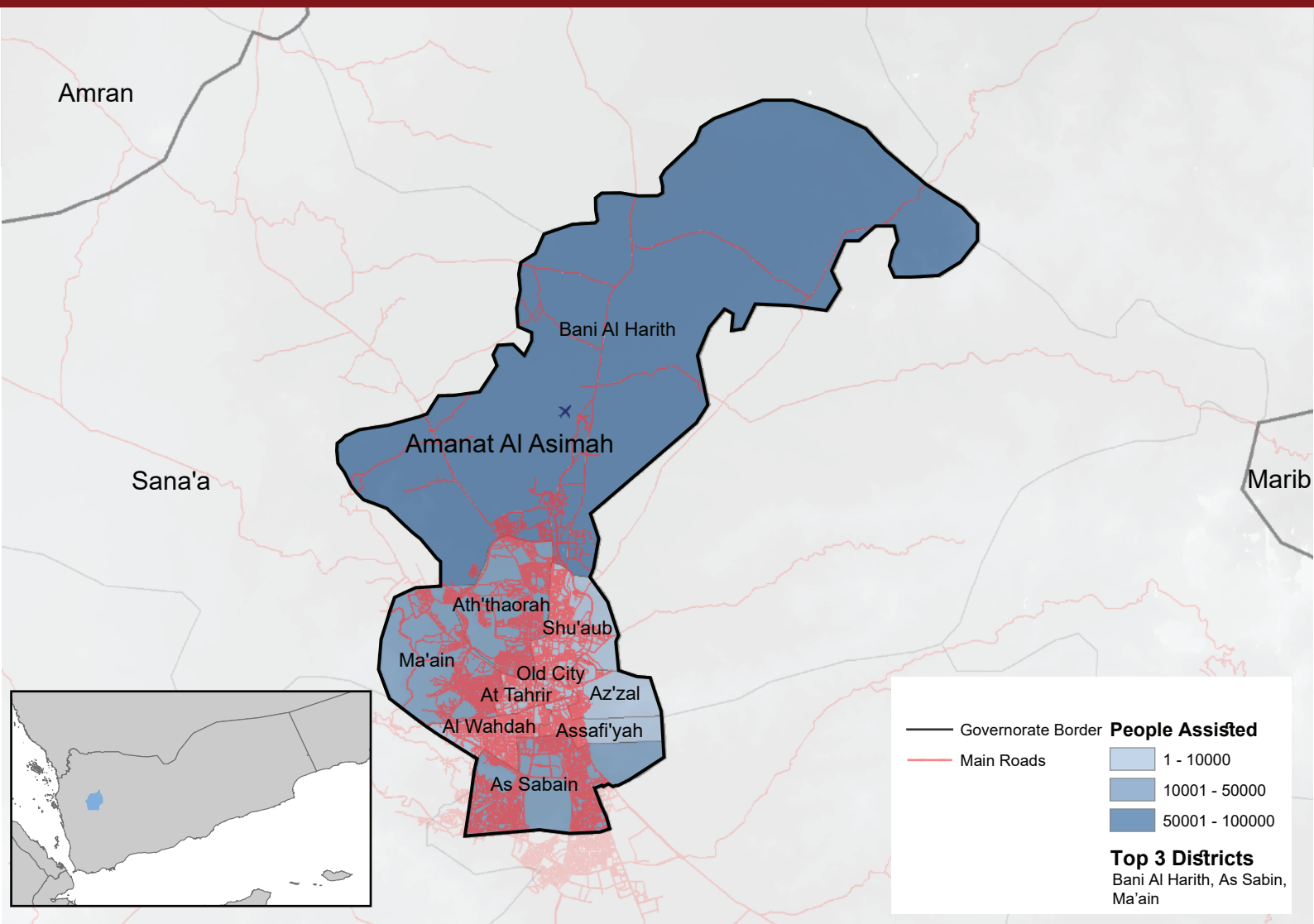


Modality of Assistance

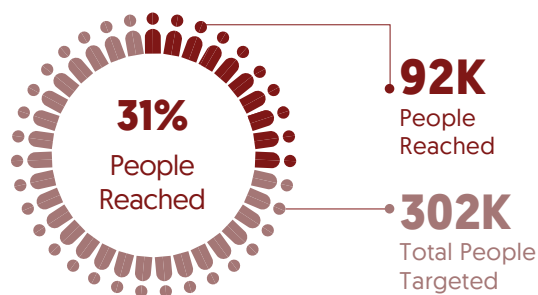


Assistance Vs Population Groups





Target vs Reach



Completion of Activities (Top 3)

28K [19%]
Non Food Items



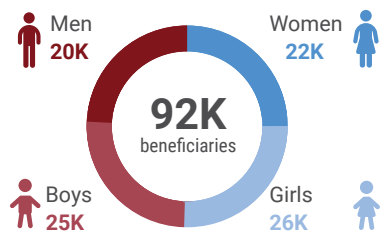
55K [72%]
Rental Subsidy



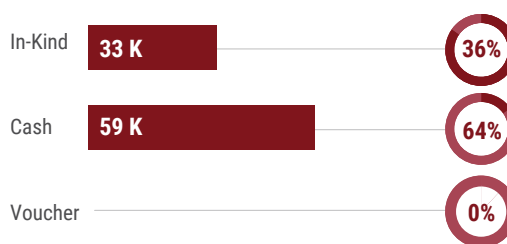
24K [64%]
Winterization Support



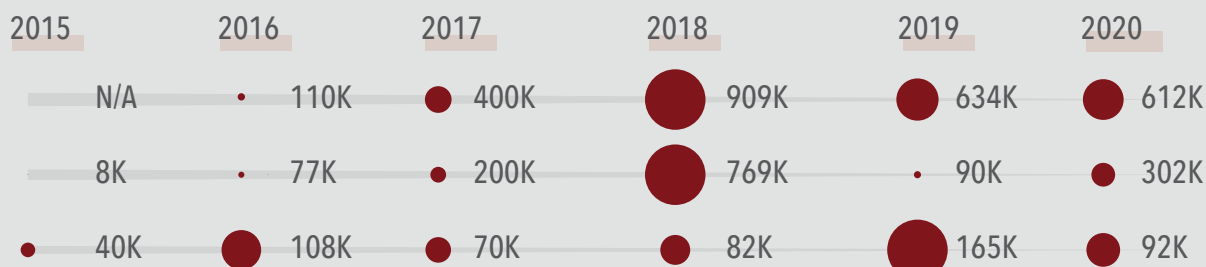
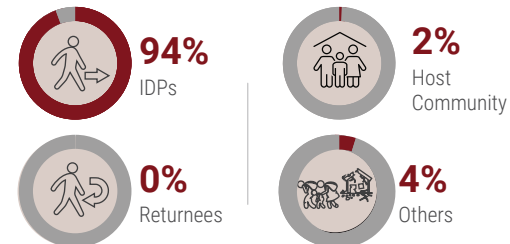
Age/Gender Breakdown

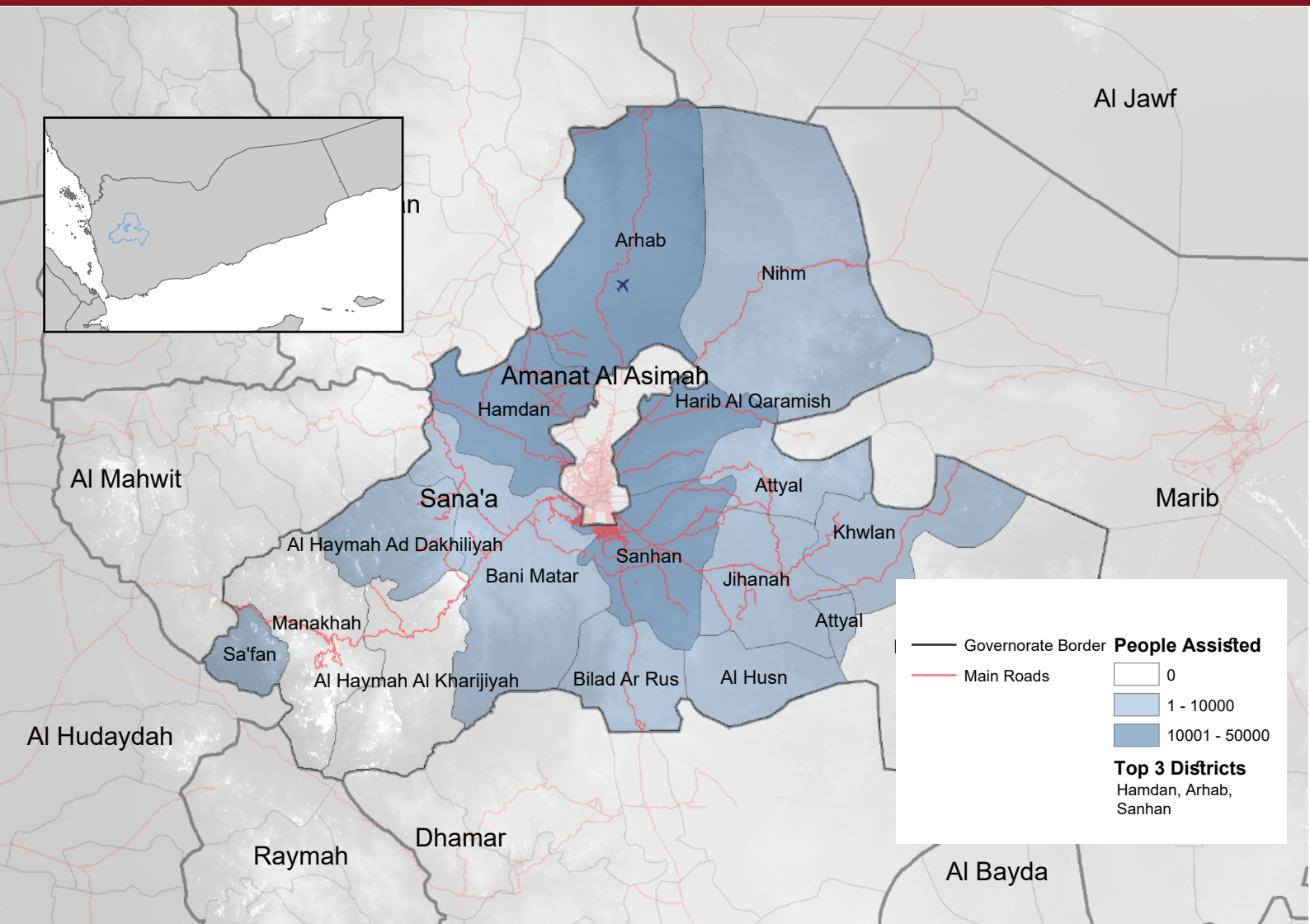


Modality of Assistance



Assistance Vs Population Groups





Target vs Reach



181K
People Reached

167K
Total People Targeted

Completion of Activities (Top 4)

45K [55%]
Non Food Items



4K [9%]
Emergency Shelter



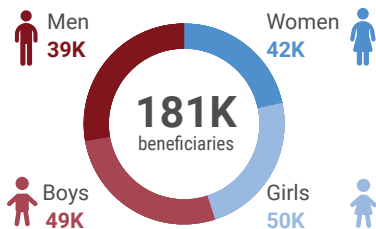
79K [100%]
Rental Subsidy



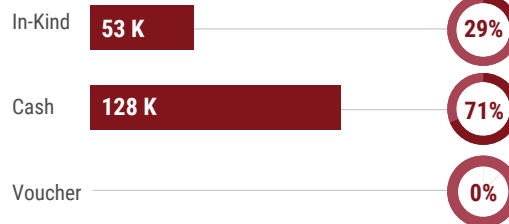
99K [100%]
Winterization Support



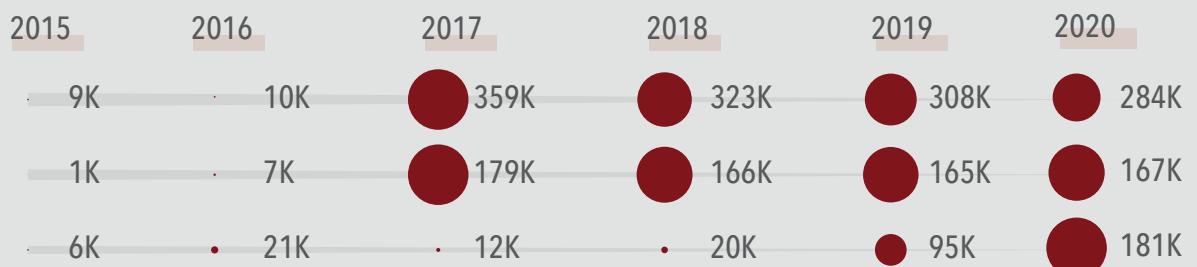
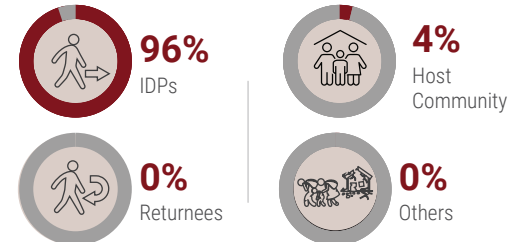
Age/Gender Breakdown

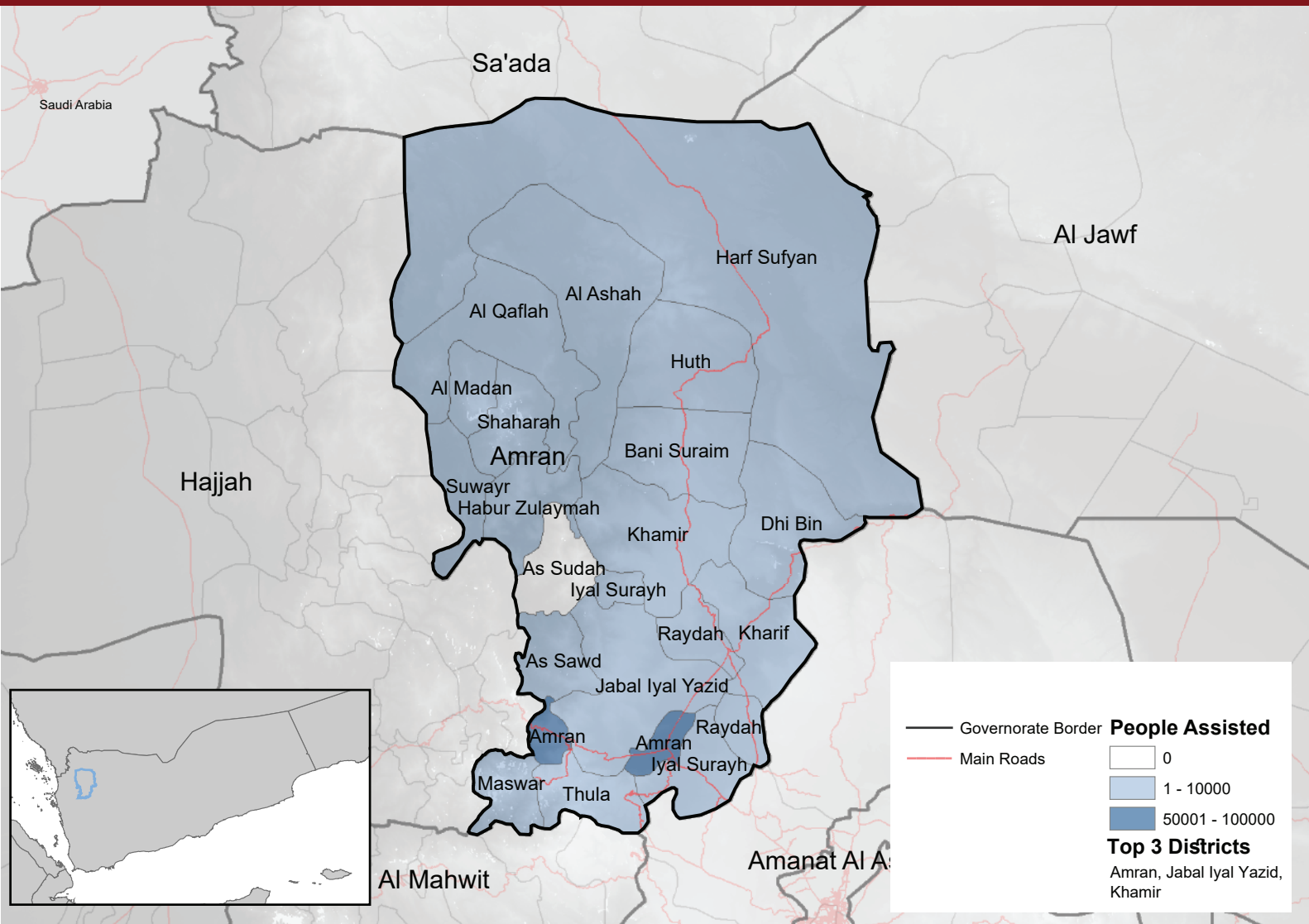


Modality of Assistance

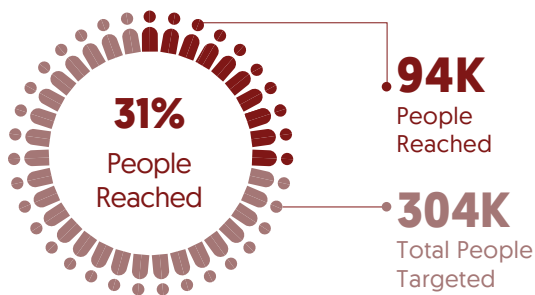


Assistance Vs Population Groups

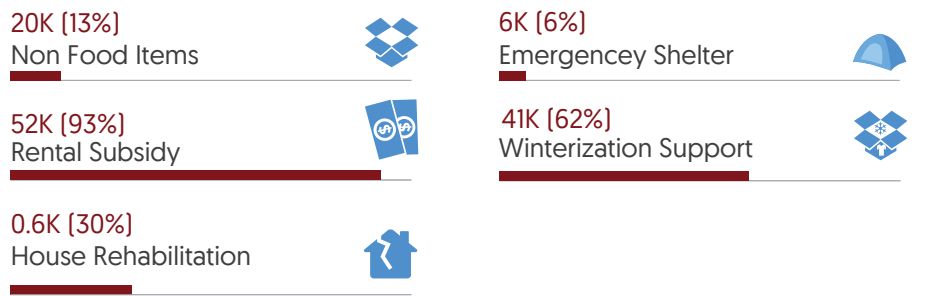




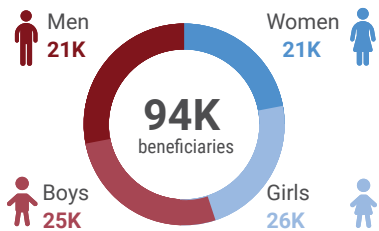
Target vs Reach



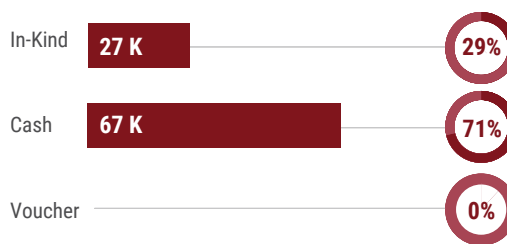
Completion of Activities (Top 5)



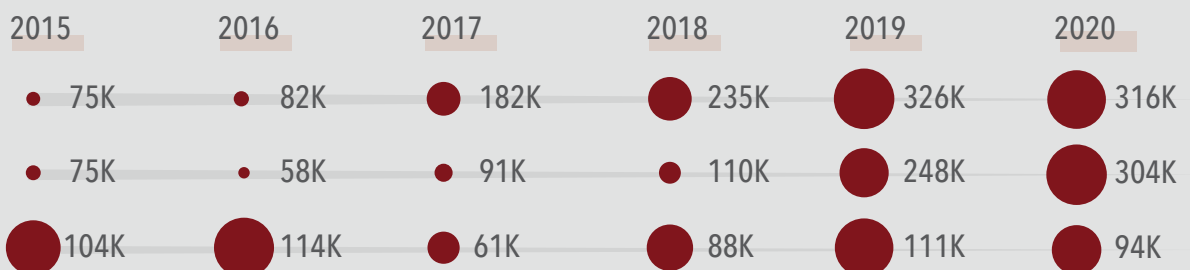
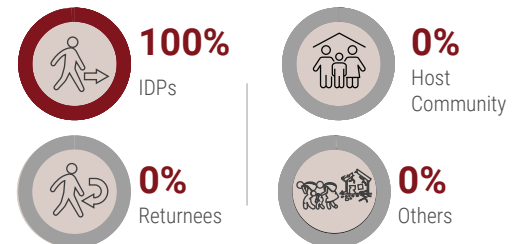
Age/Gender Breakdown

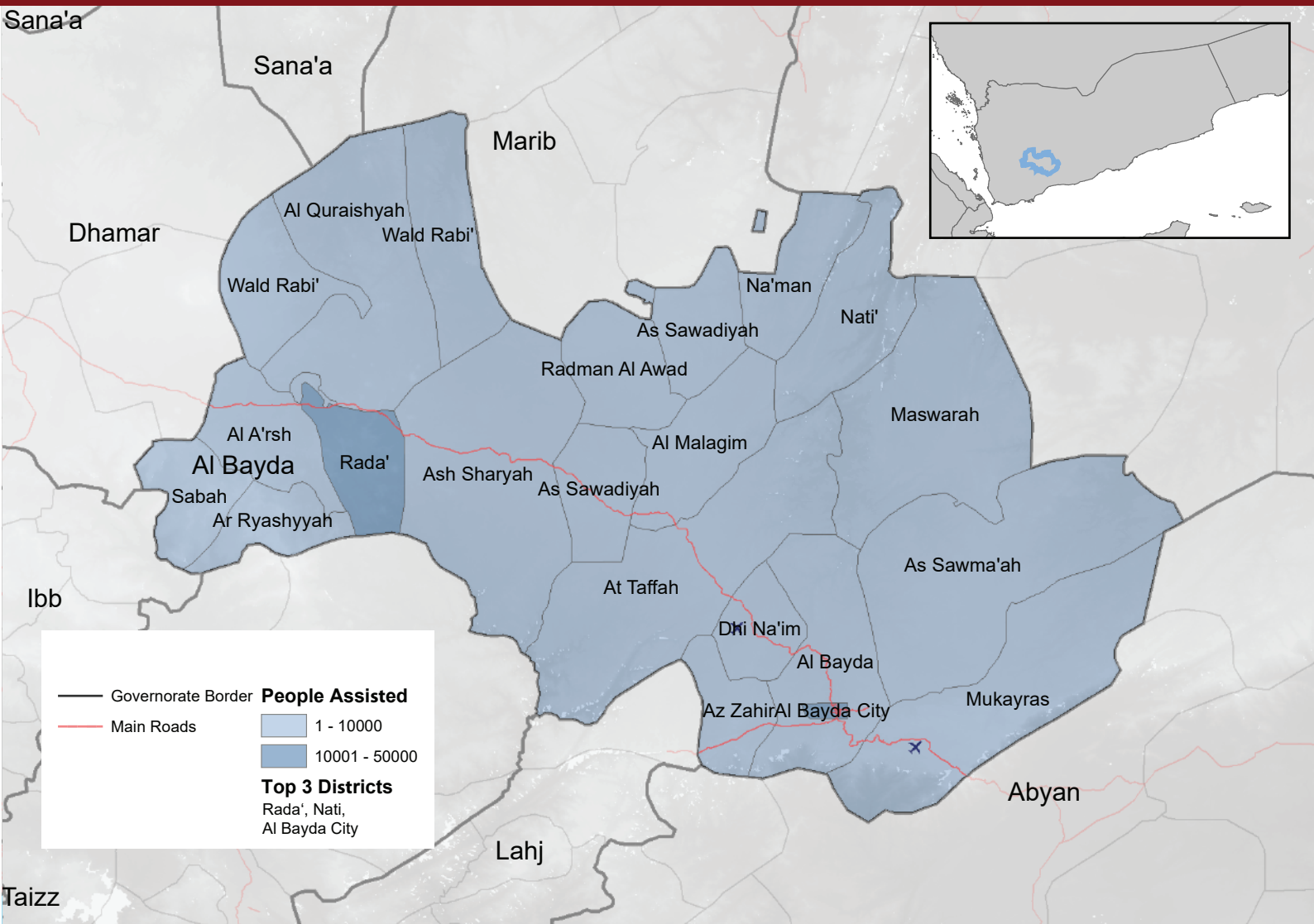


Modality of Assistance

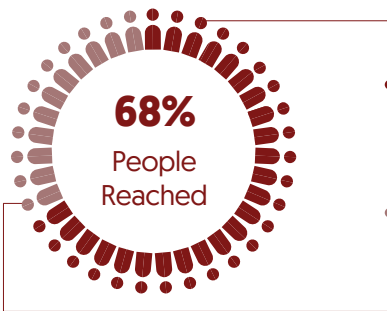


Assistance Vs Population Groups





Target vs Reach



69K
People Reached

102K
Total People Targeted

Completion of Activities (Top 4)

18K [42%]
Non Food tems



14K [10%]
Winterization Support



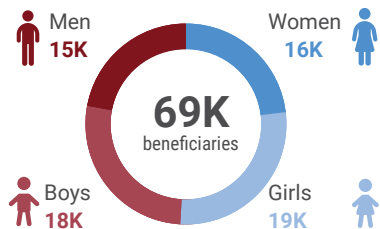
37K [100%]
Rental Subsidy



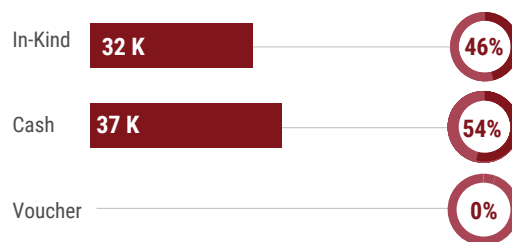
1K [4%]
Emergenceny Shelter



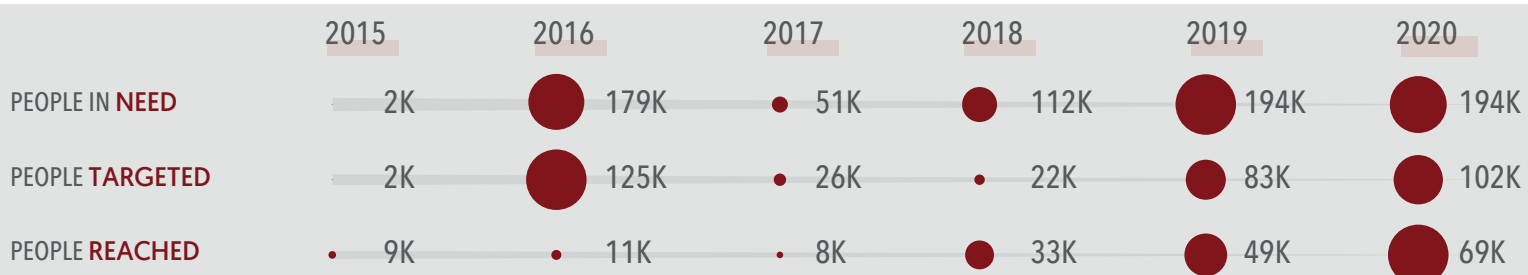
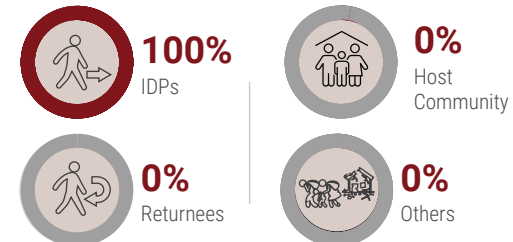
Age/Gender Breakdown

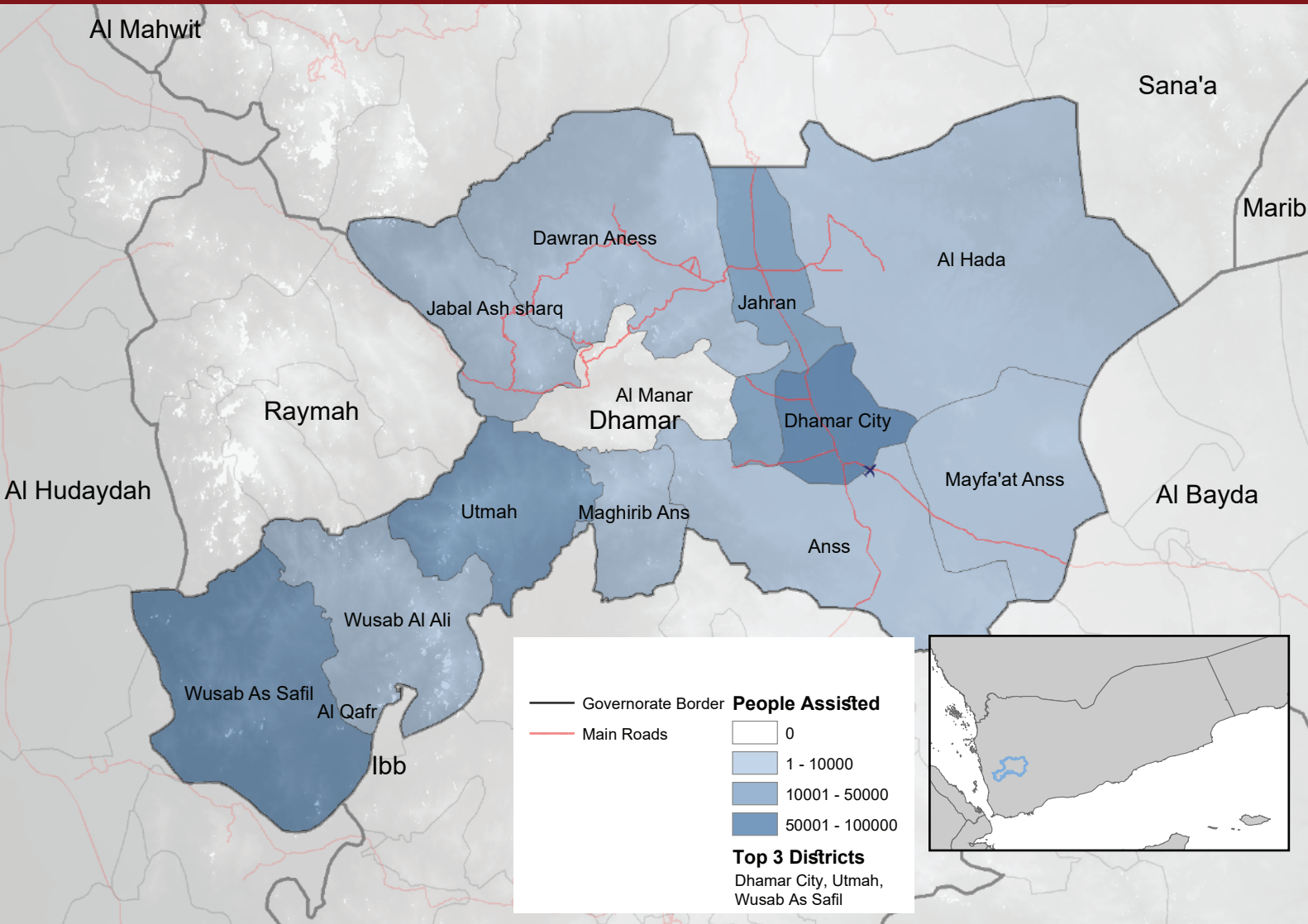


Modality of Assistance

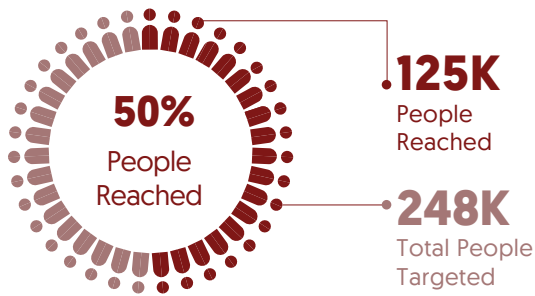


Assistance Vs Population Groups

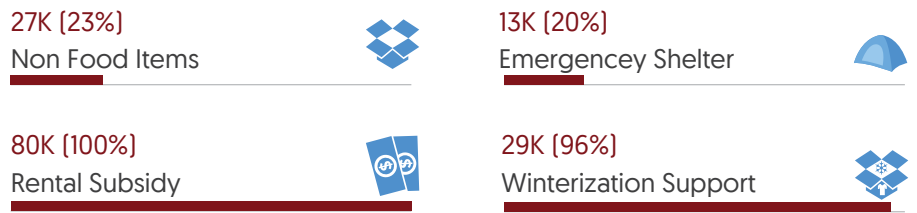




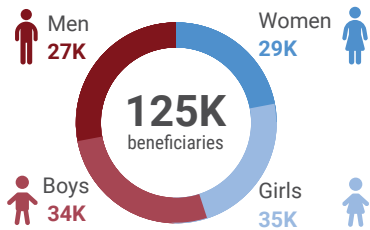
Target vs Reach



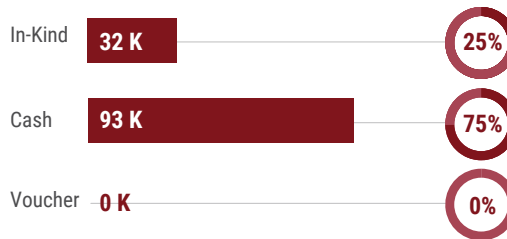
Completion of Activities (Top 4)



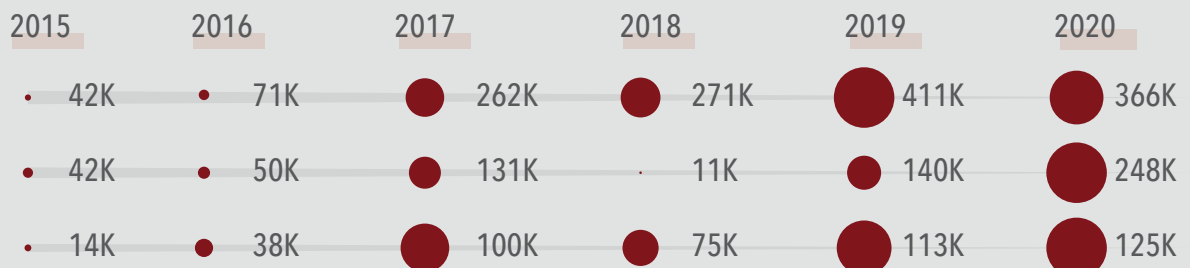
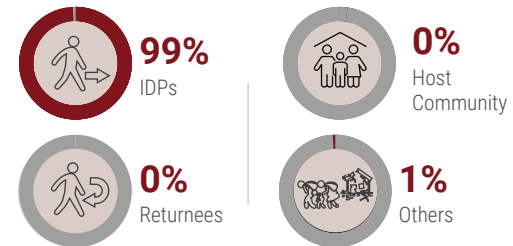
Age/Gender Breakdown

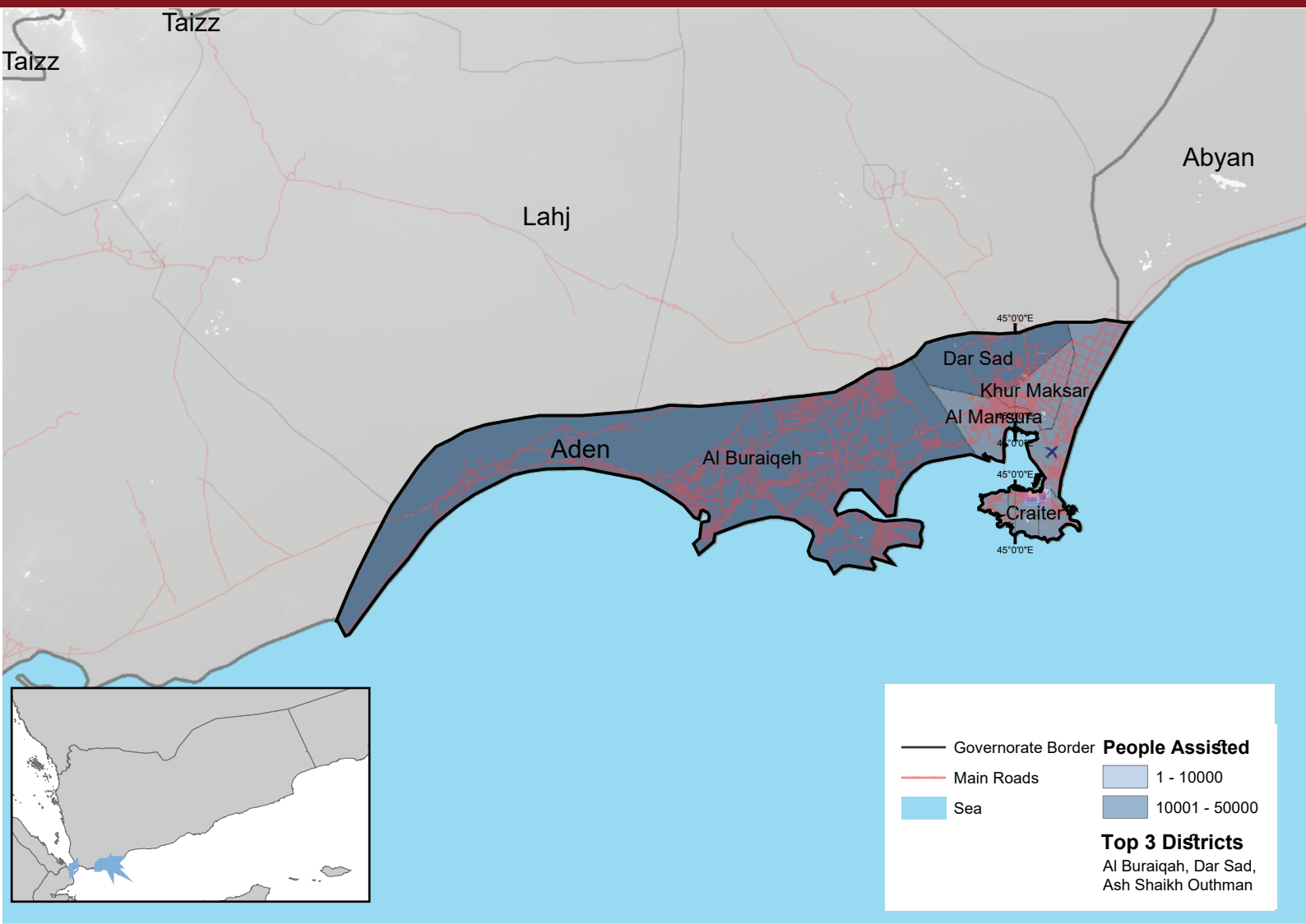


Modality of Assistance

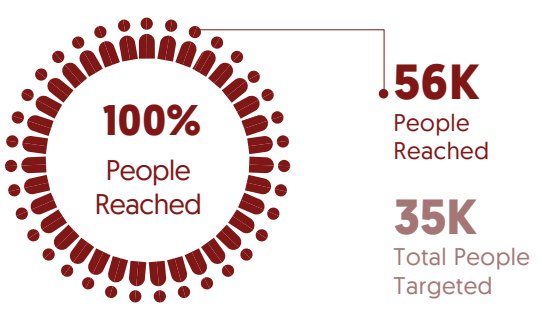


Assistance Vs Population Groups

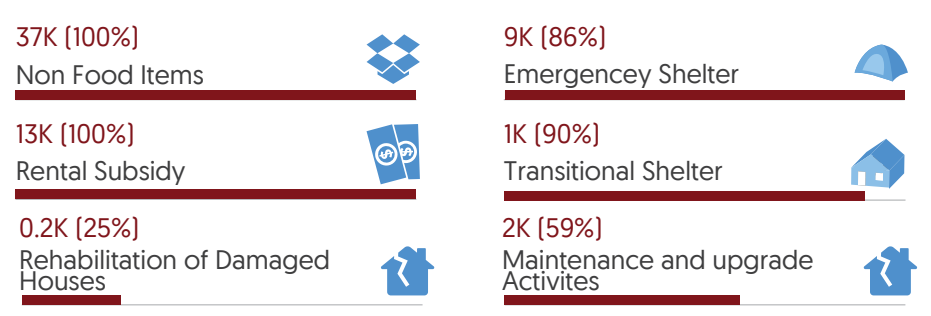




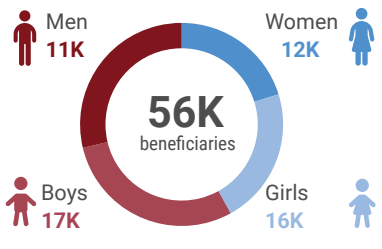
Target vs Reach



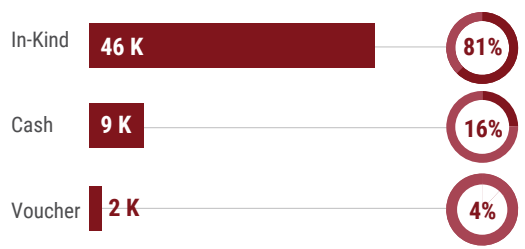
Completion of Activities (Top 6)



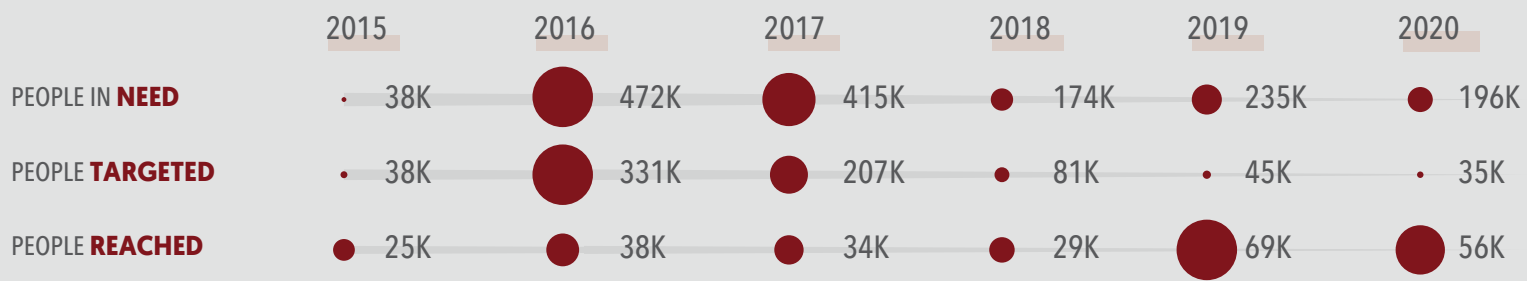
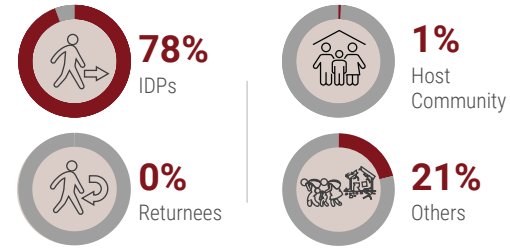
Age/Gender Breakdown

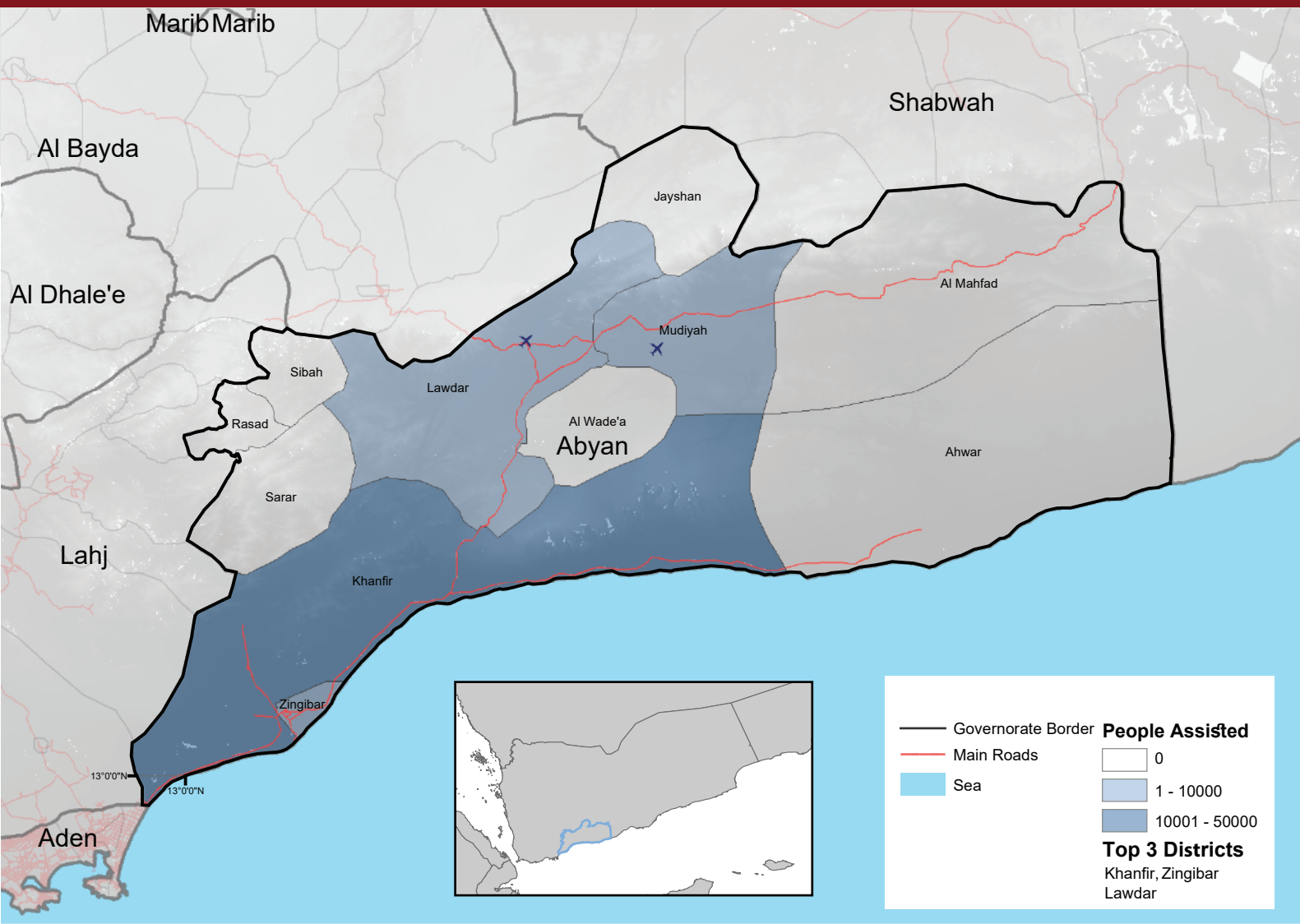


Modality of Assistance

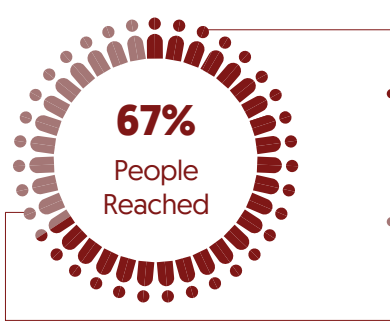


Assistance Vs Population Groups





Target vs Reach



43K
People Reached

63K
Total People Targeted

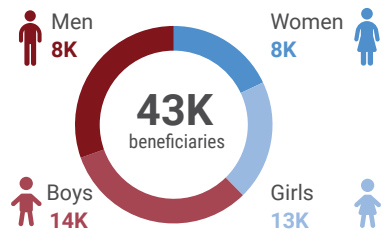
Completion of Activities (Top 3)

46K [100%]
Non Food Items

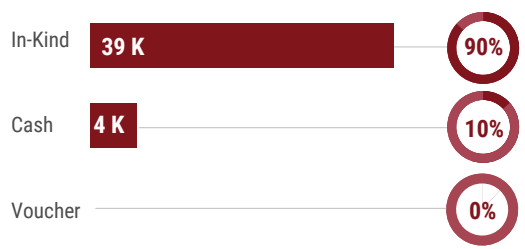
4K [34%]
Rental Subsidy

1K [5%]
Emergency Shelter

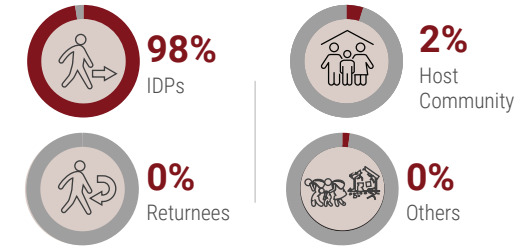
Age/Gender Breakdown



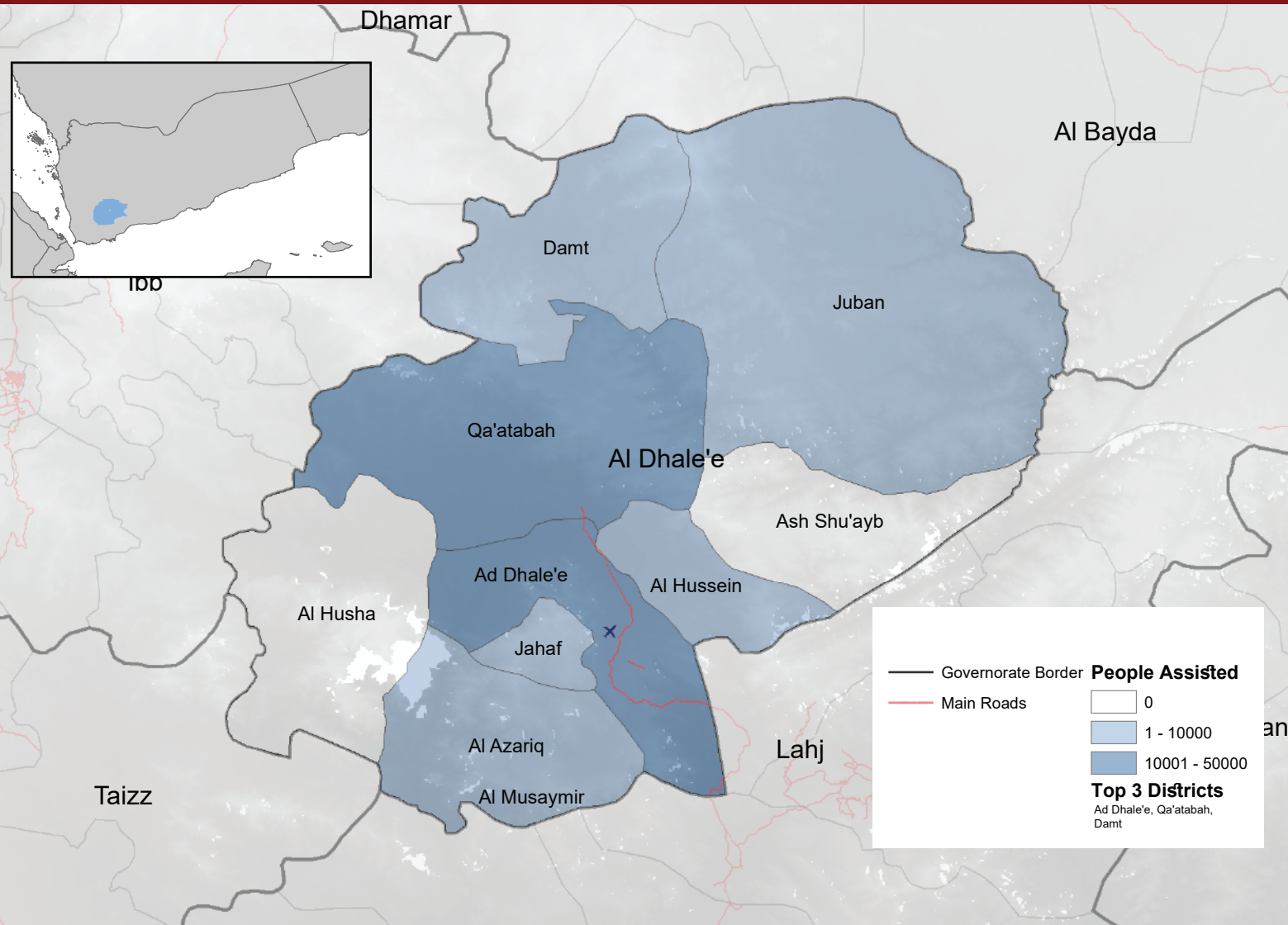
Modality of Assistance



Assistance Vs Population Groups



	2015	2016	2017	2018	2019	2020
PEOPLE IN NEED	62K	197K	39K	88K	150K	141K
PEOPLE TARGETED	62K	138K	20K	74K	67K	63K
PEOPLE REACHED	13K	27K	2K	29K	23K	23K



Target vs Reach



89K
People Reached

100K
Total People Targeted

Completion of Activities (Top 5)

56K (100%)
Non Food Items

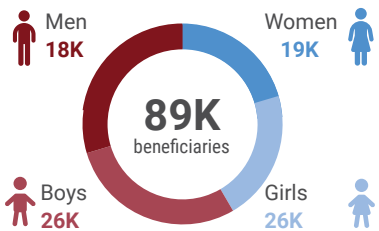
58K (100%)
Rental Subsidy

01K (1%)
Transitional Shelter

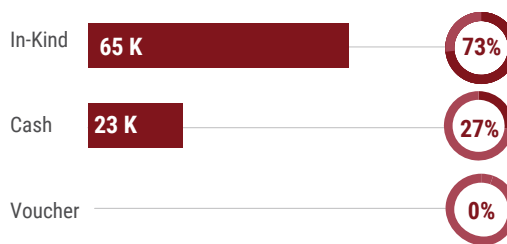
7K (23%)
Emergency Shelter

7K (50%)
Winterization Support

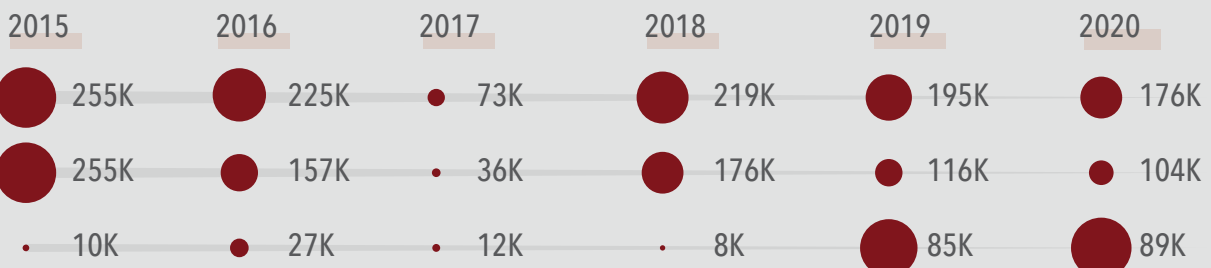
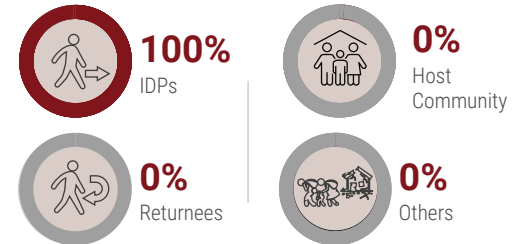
Age/Gender Breakdown

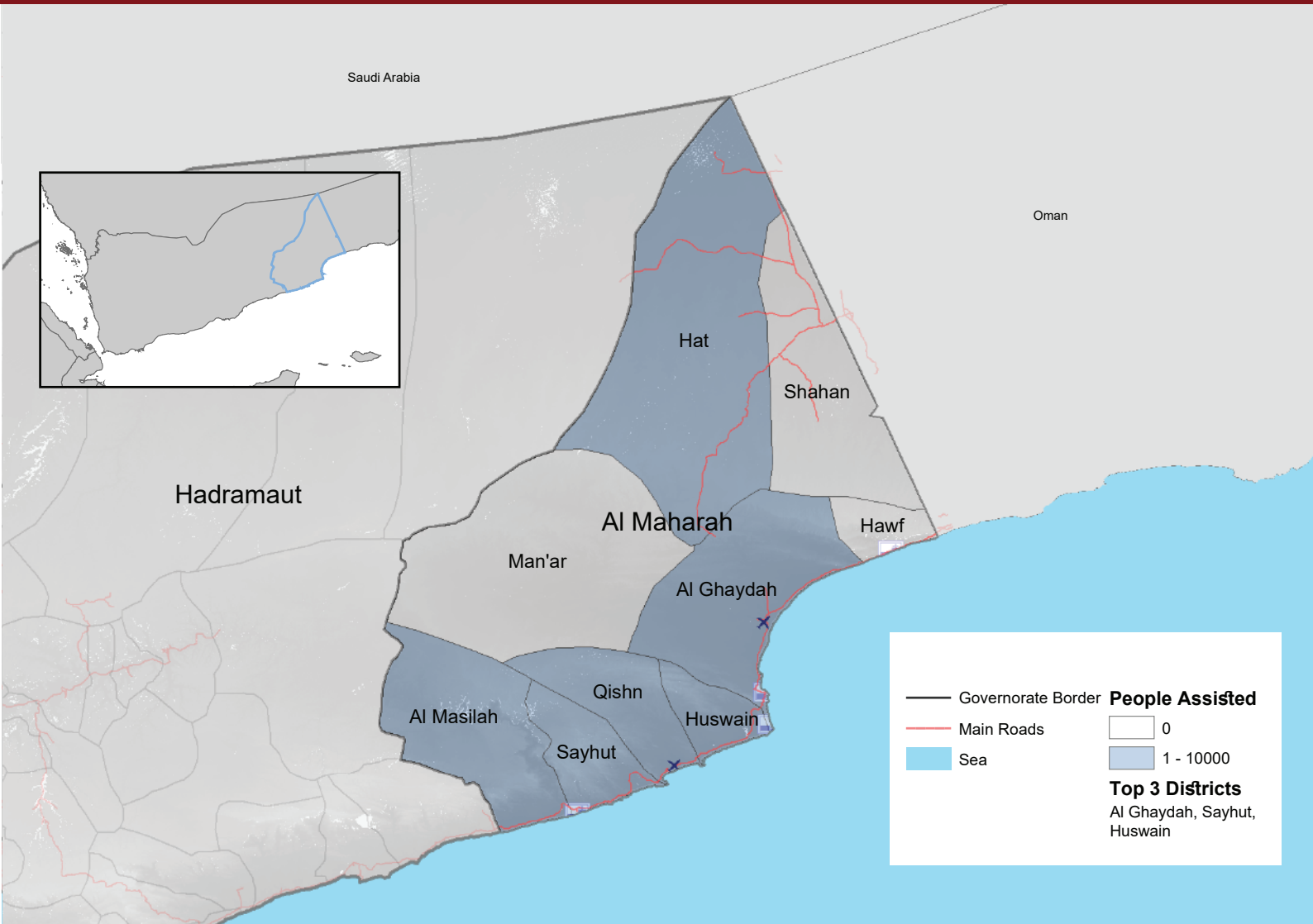


Modality of Assistance



Assistance Vs Population Groups





Target vs Reach



7K
People Reached

8K
Total People Targeted

Completion of Activities [Top 2]

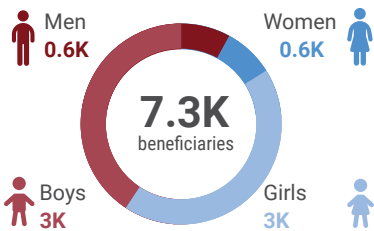
7K (100%)
Non Food Items



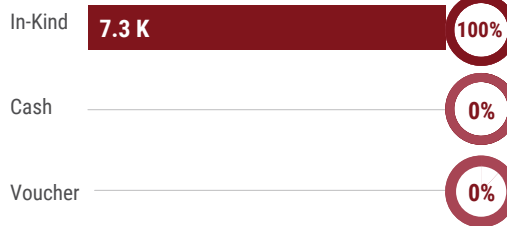
0.1K (16%)
Emergency Shelter



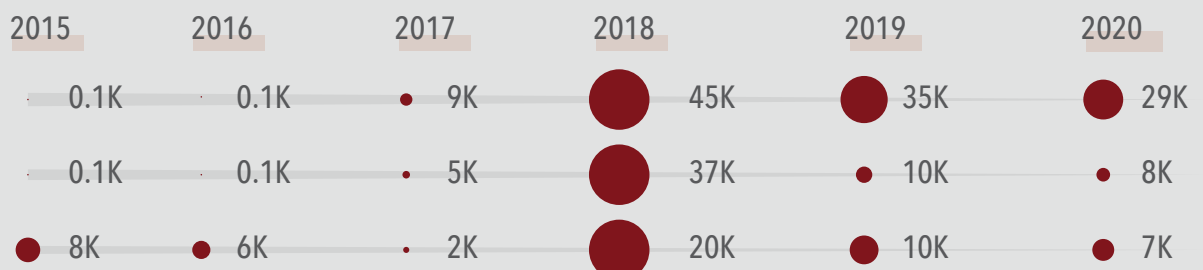
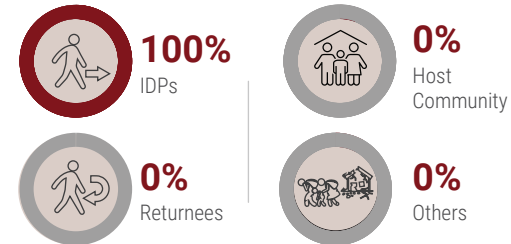
Modality of Assistance

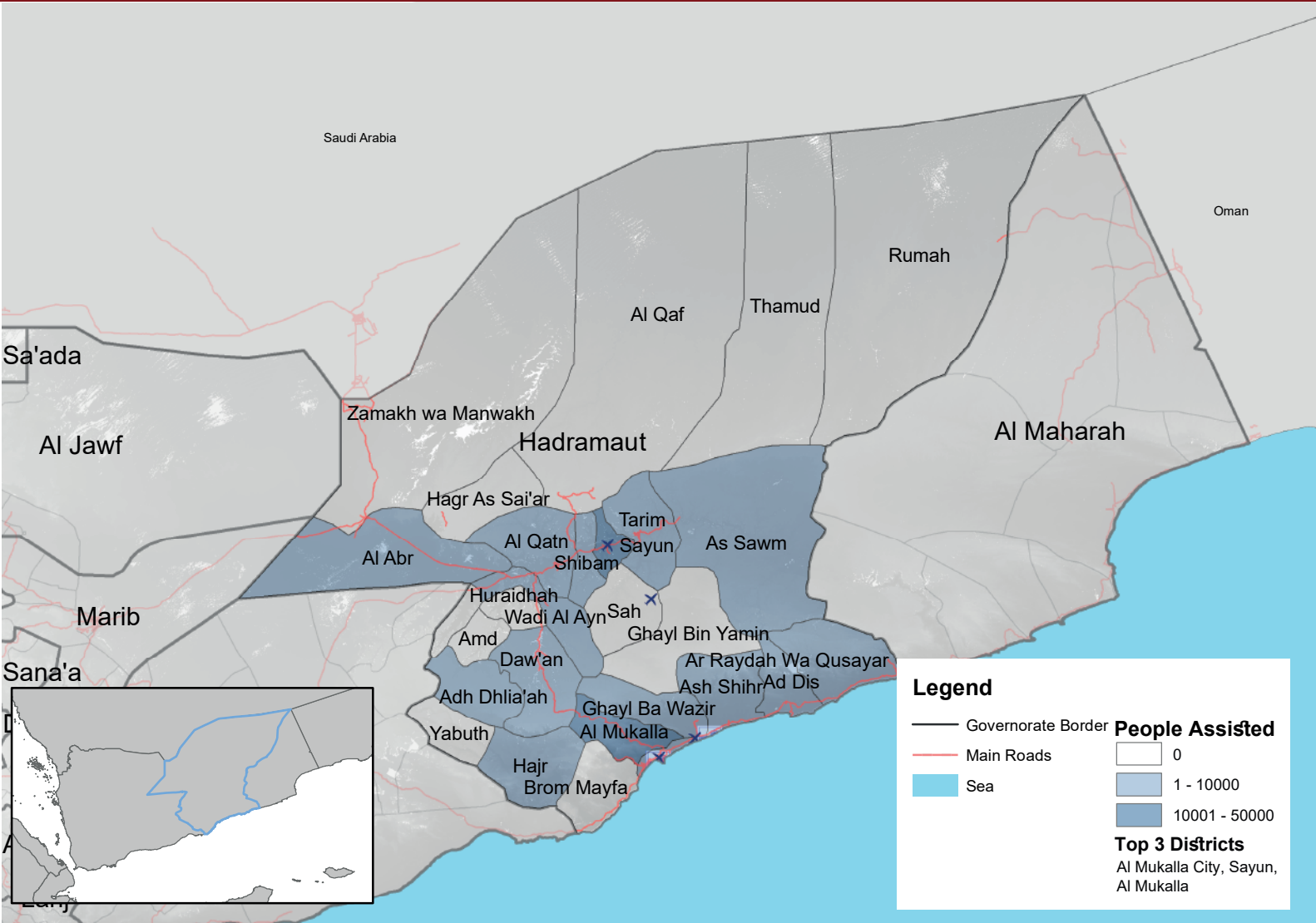


Modality of Assistance



Assistance Vs Population Groups





Target vs Reach



64K
People Reached

11K
Total People Targeted

Completion of Activities (Top 4)

45K (100%)
Non Food Items



6K (100%)
Emergency Shelter



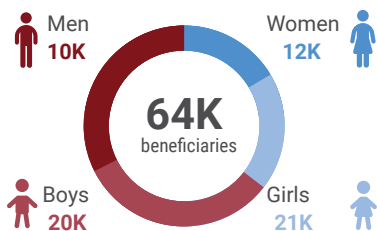
17K (100%)
Rental Subsidy



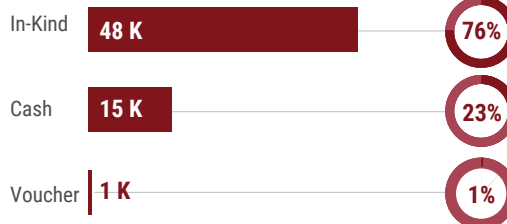
0.2K (100%)
Winterization Support



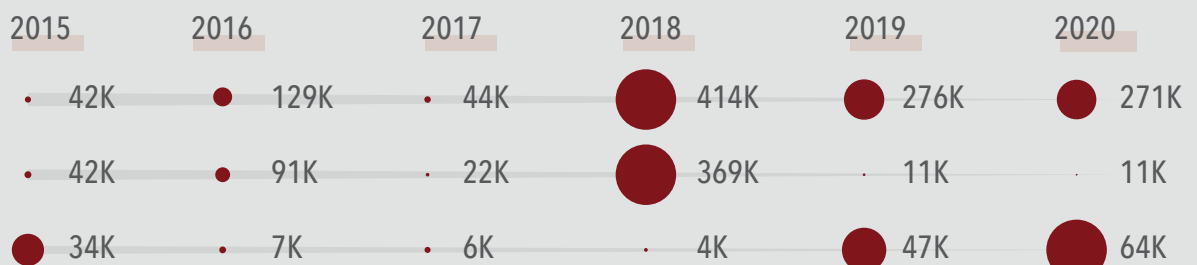
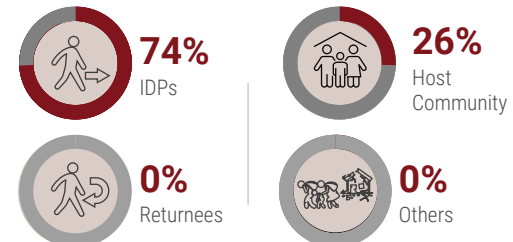
Age/Gender Breakdown

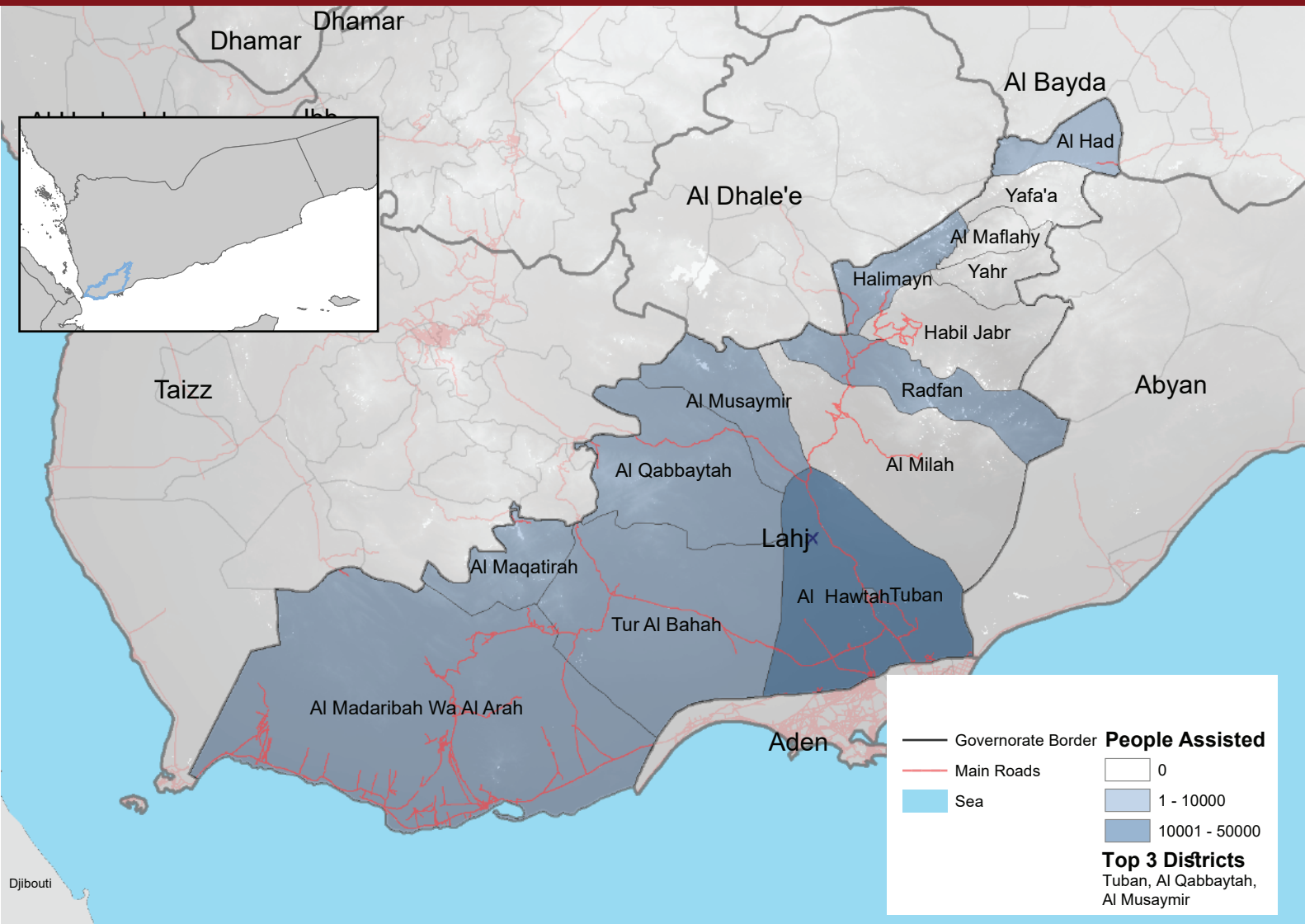


Modality of Assistance

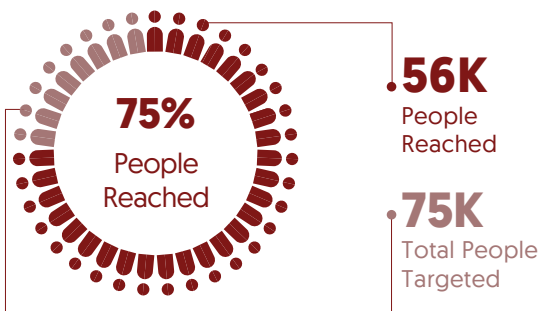


Assistance Vs Population Groups

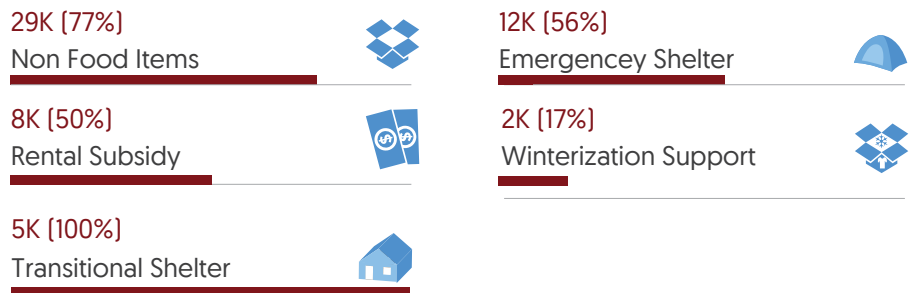




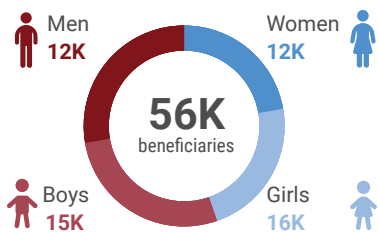
Target vs Reach



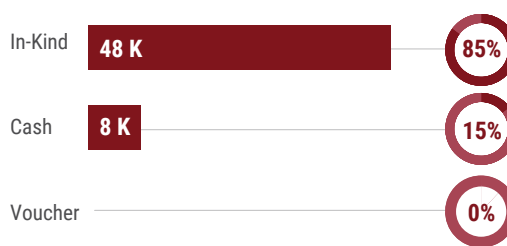
Completion of Activities [Top 5]



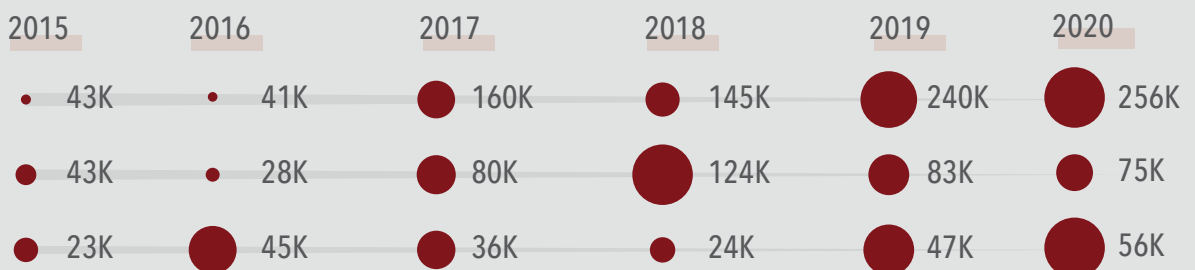
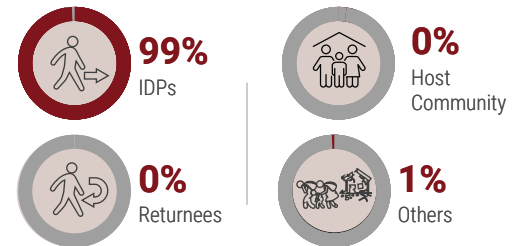
Age/Gender Breakdown

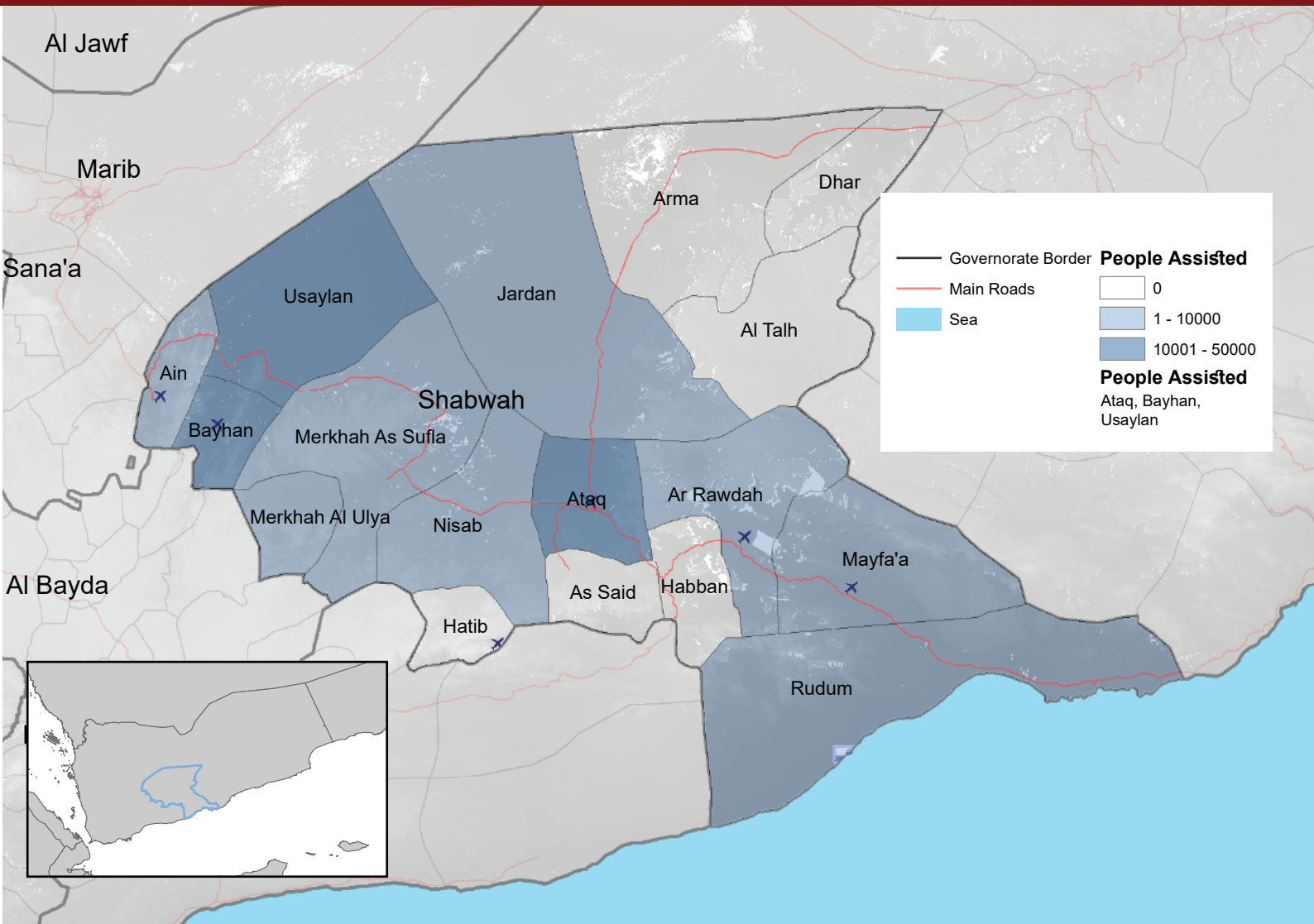


Modality of Assistance

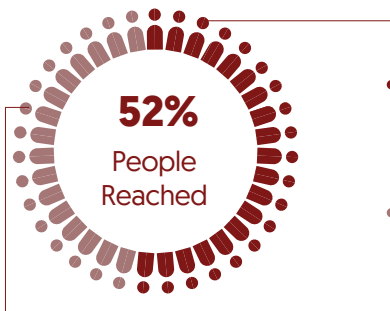


Assistance Vs Population Groups





Target vs Reach



40K
People Reached

77K
Total People Targeted

Completion of Activities [Top 3]

16K (44%)
Non Food Items



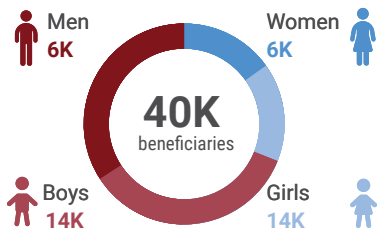
10K (100%)
Winterization Support



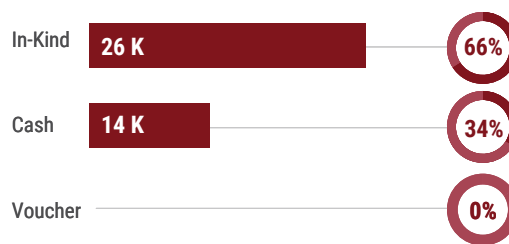
13K (69%)
Rental Subsidy



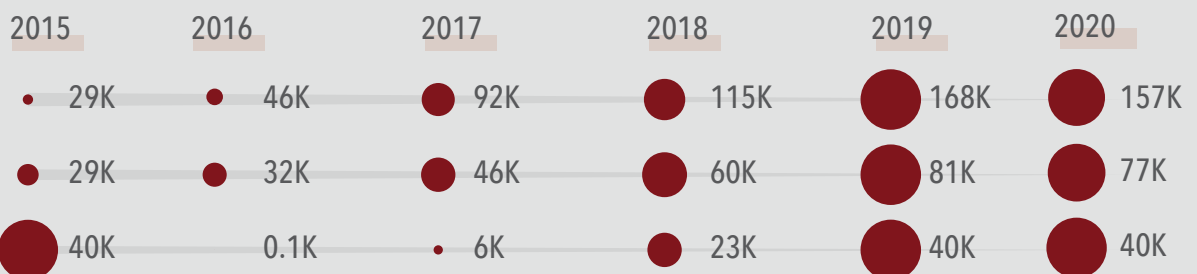
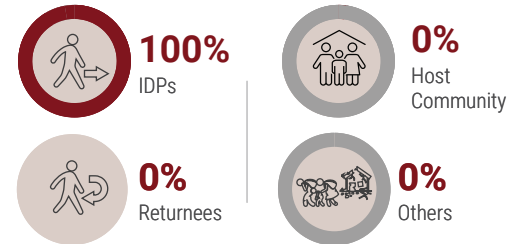
Age/Gender Breakdown

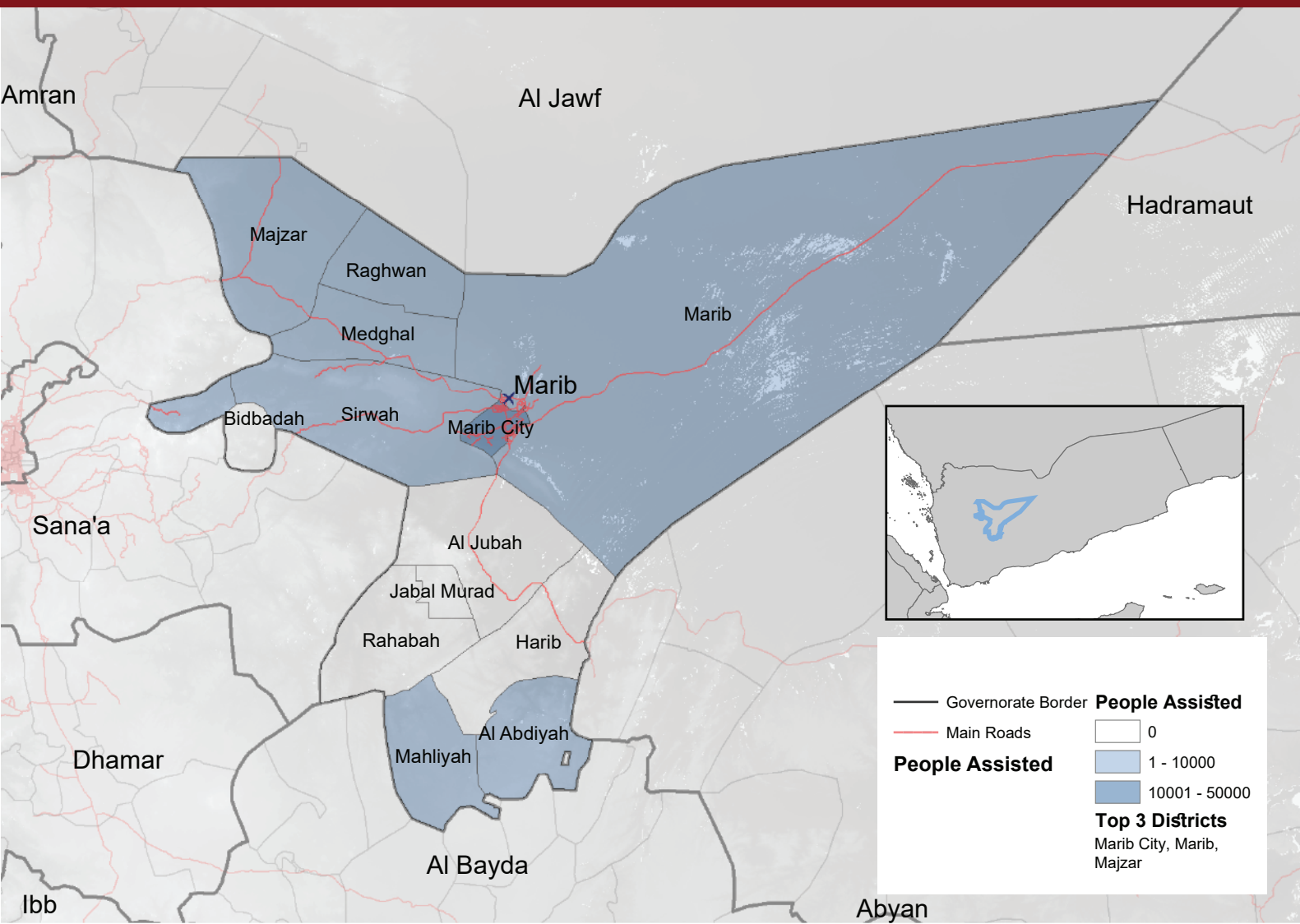


Modality of Assistance

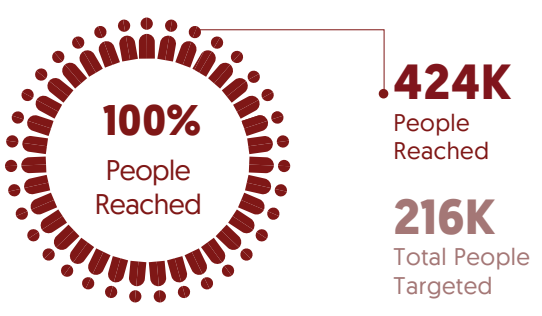


Assistance vs Population Groups

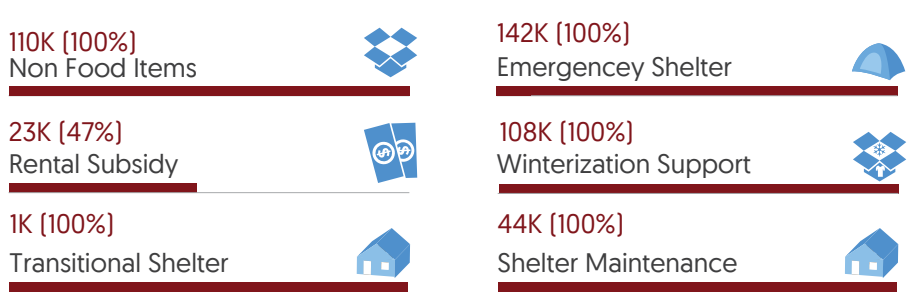




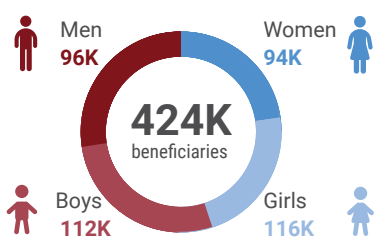
Target vs Reach



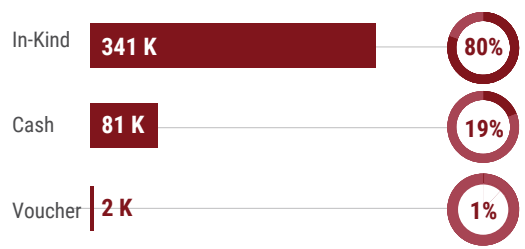
Completion of Activities (Top 6)



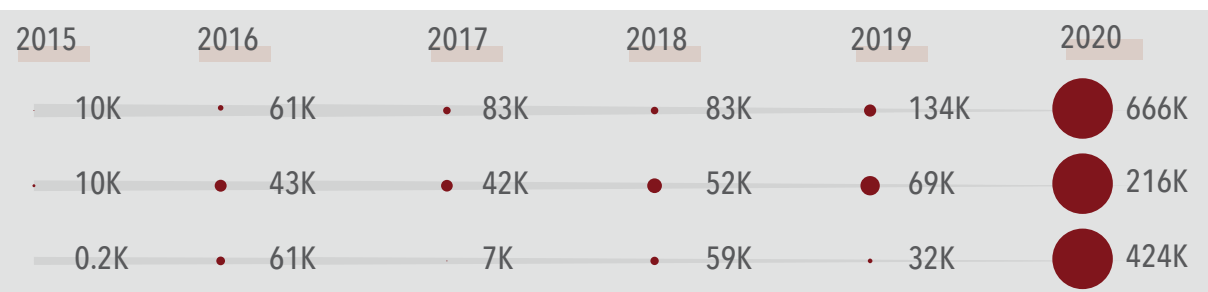
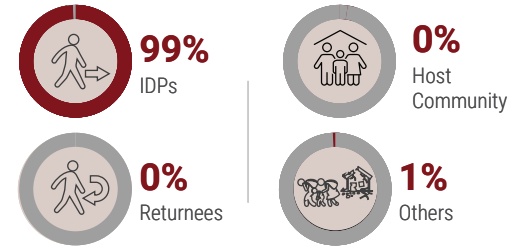
Age/Gender Breakdown

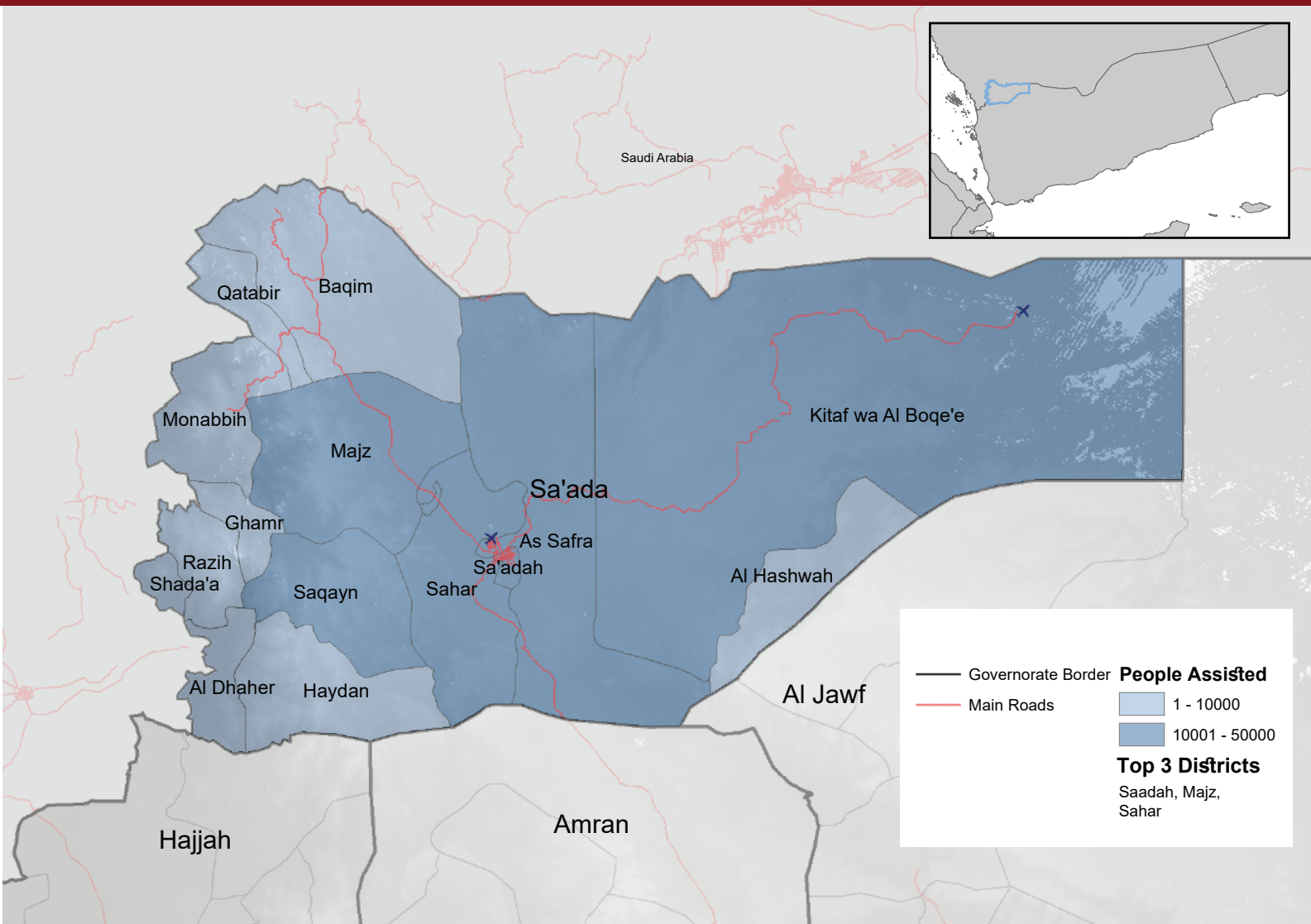


Modality of Assistance



Assistance Vs Population Groups





Target vs Reach



111K
People Reached

90K
Total People Targeted

Completion of Activities (Top 4)

57K [100%]
Non Food Items



5K [21%]
Emergency Shelter



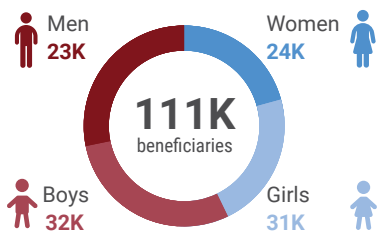
77K [100%]
Rental Subsidy



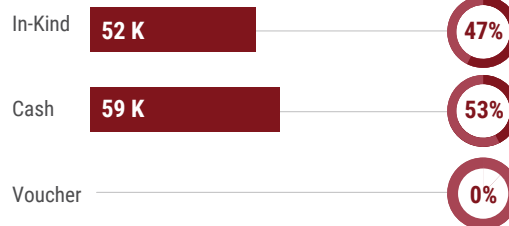
10K [97%]
Winterization Support



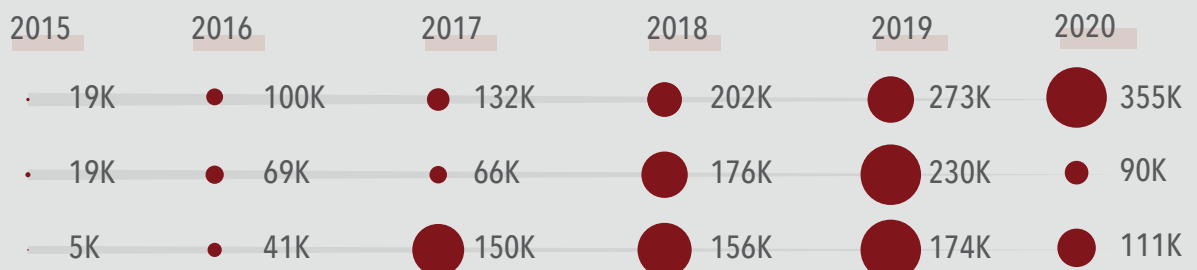
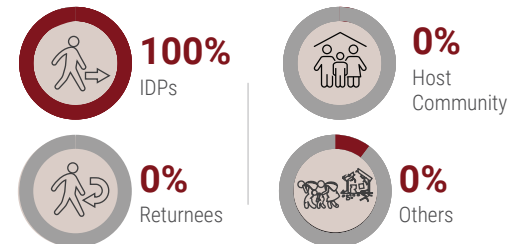
Age/Gender Breakdown

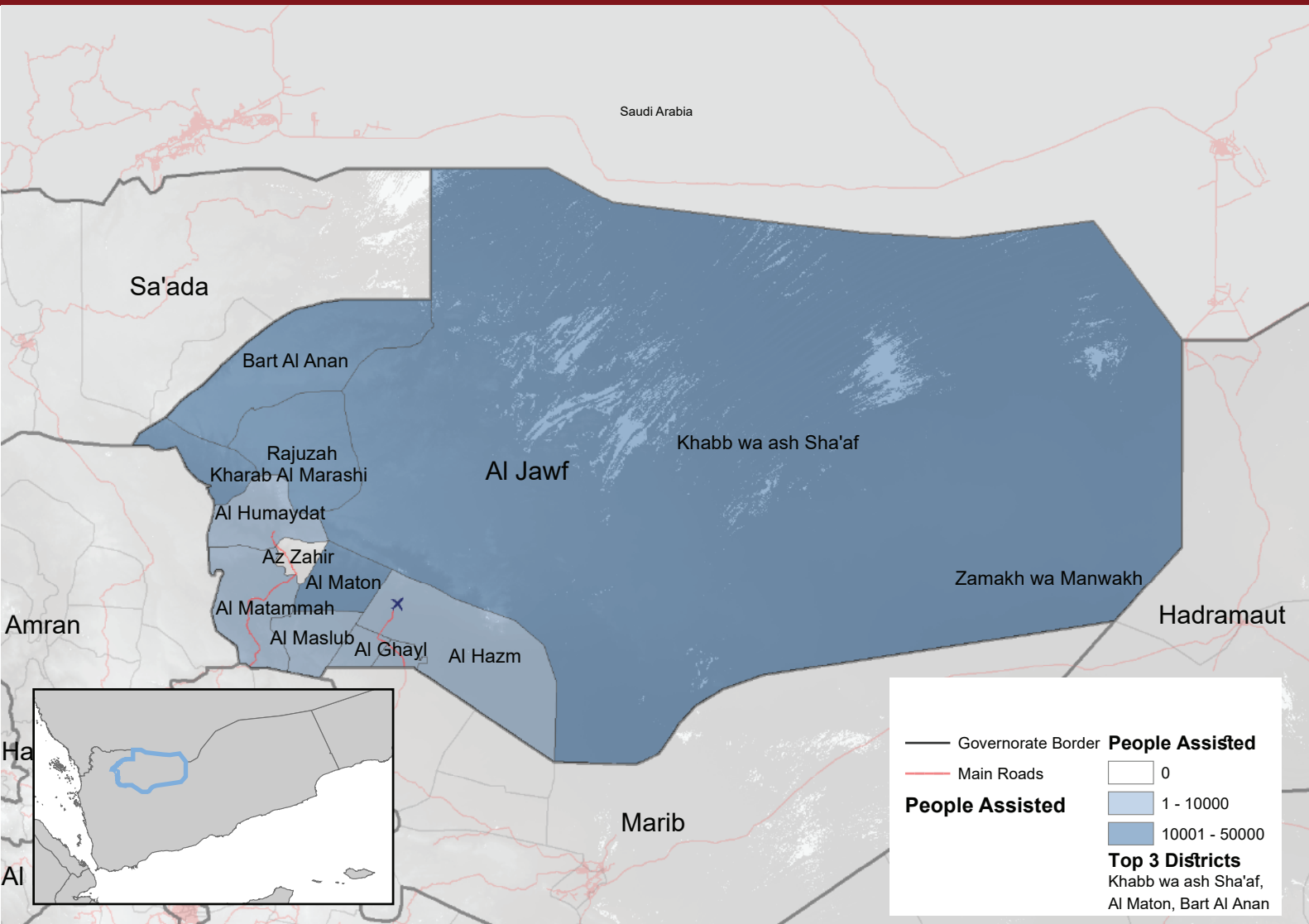


Modality of Assistance

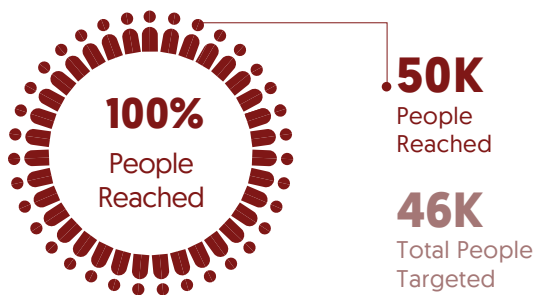


Assistance Vs Population Groups

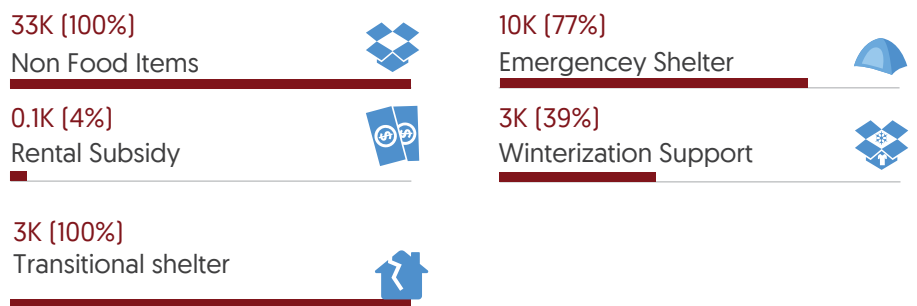




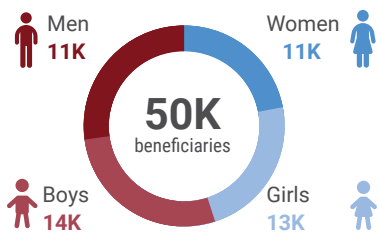
Target vs Reach



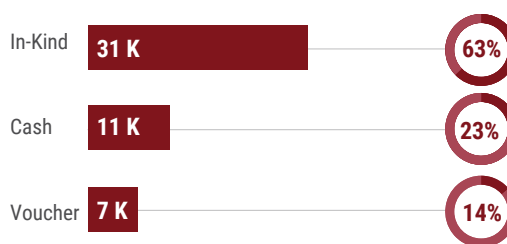
Completion of Activities (Top 5)



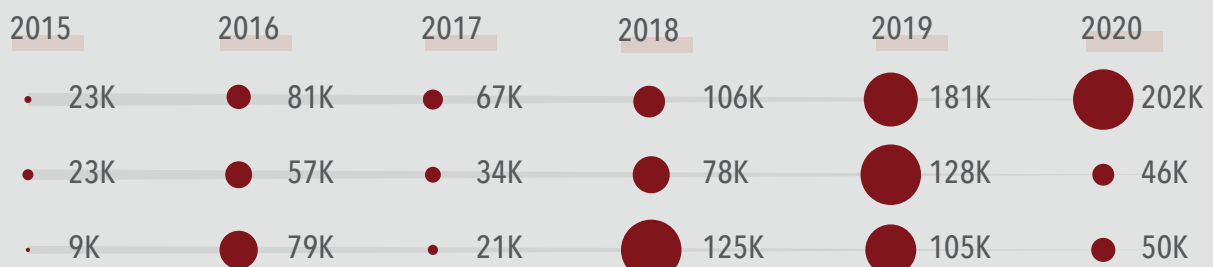
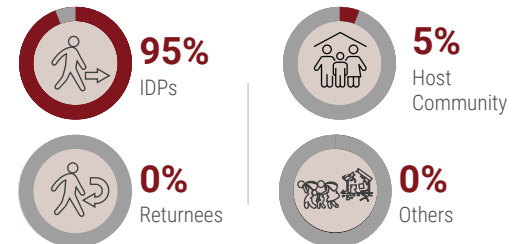
Age/Gender Breakdown

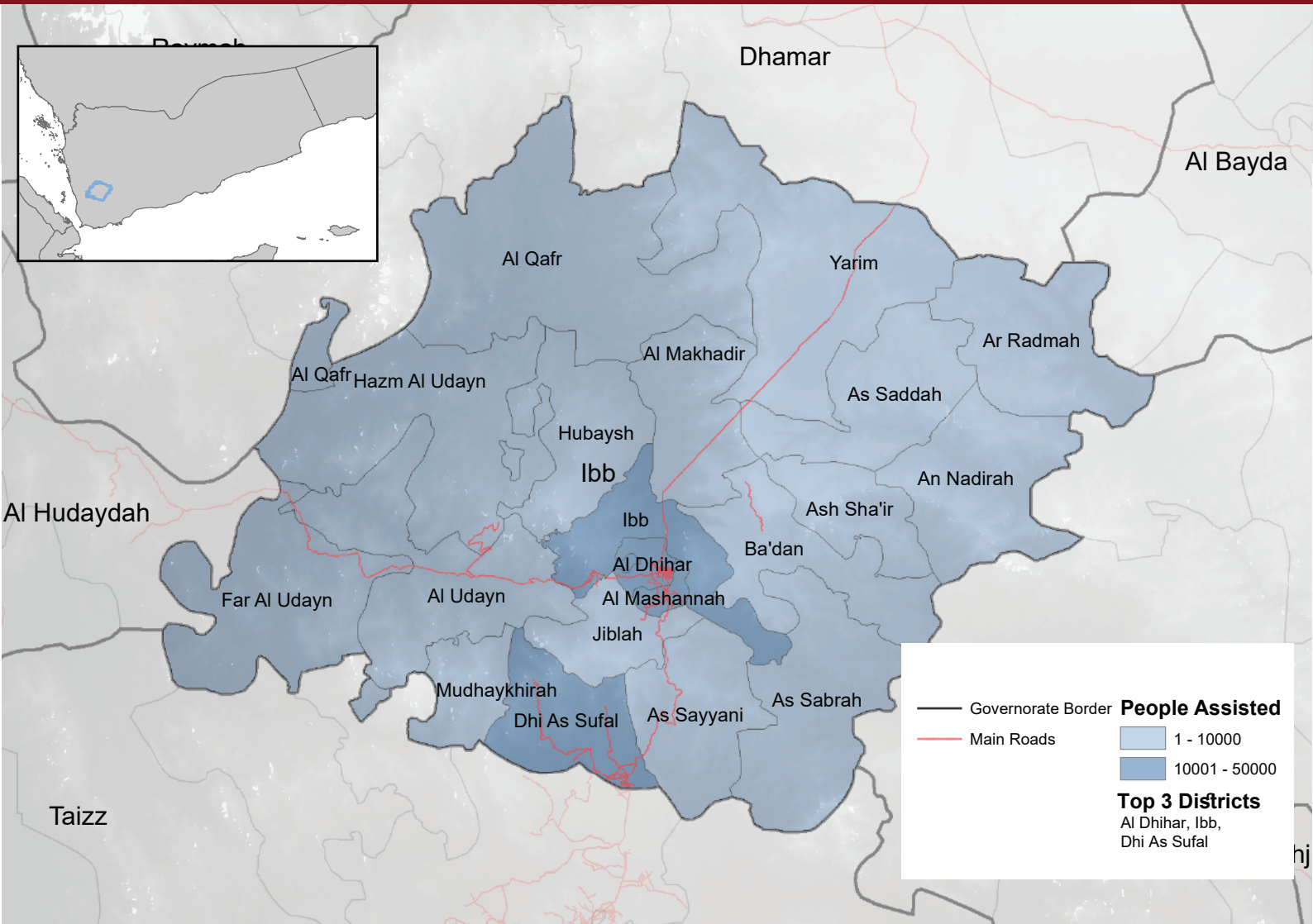


Modality of Assistance



Assistance Vs Population Groups





Target vs Reach



123K
People Reached

247K
Total People Targeted

Completion of Activities (Top 4)

54K [40%]
Non Food Items



4K [5%]
Emergency Shelter



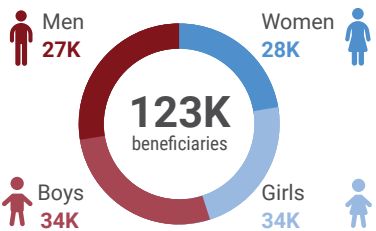
62K [100%]
Rental Subsidy



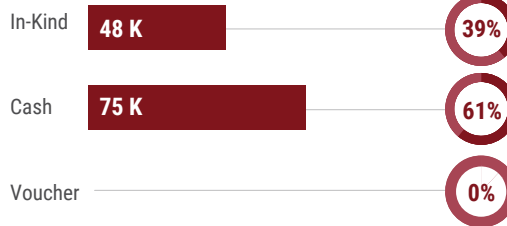
25K [72%]
Winterization Support



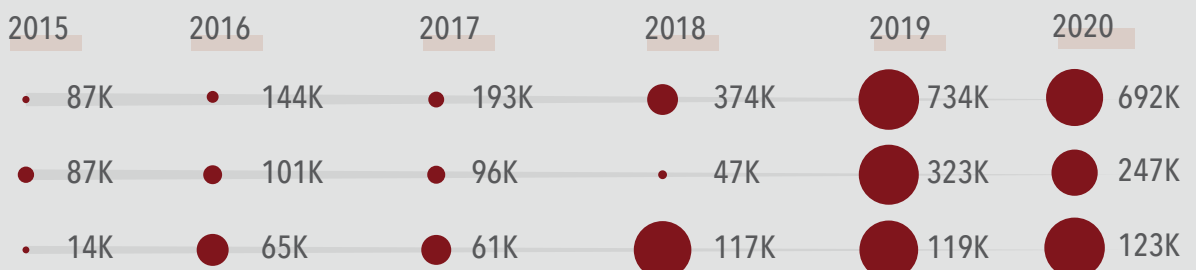
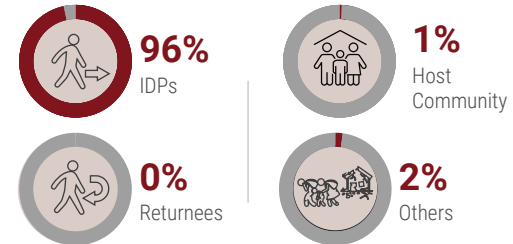
Age/Gender Breakdown

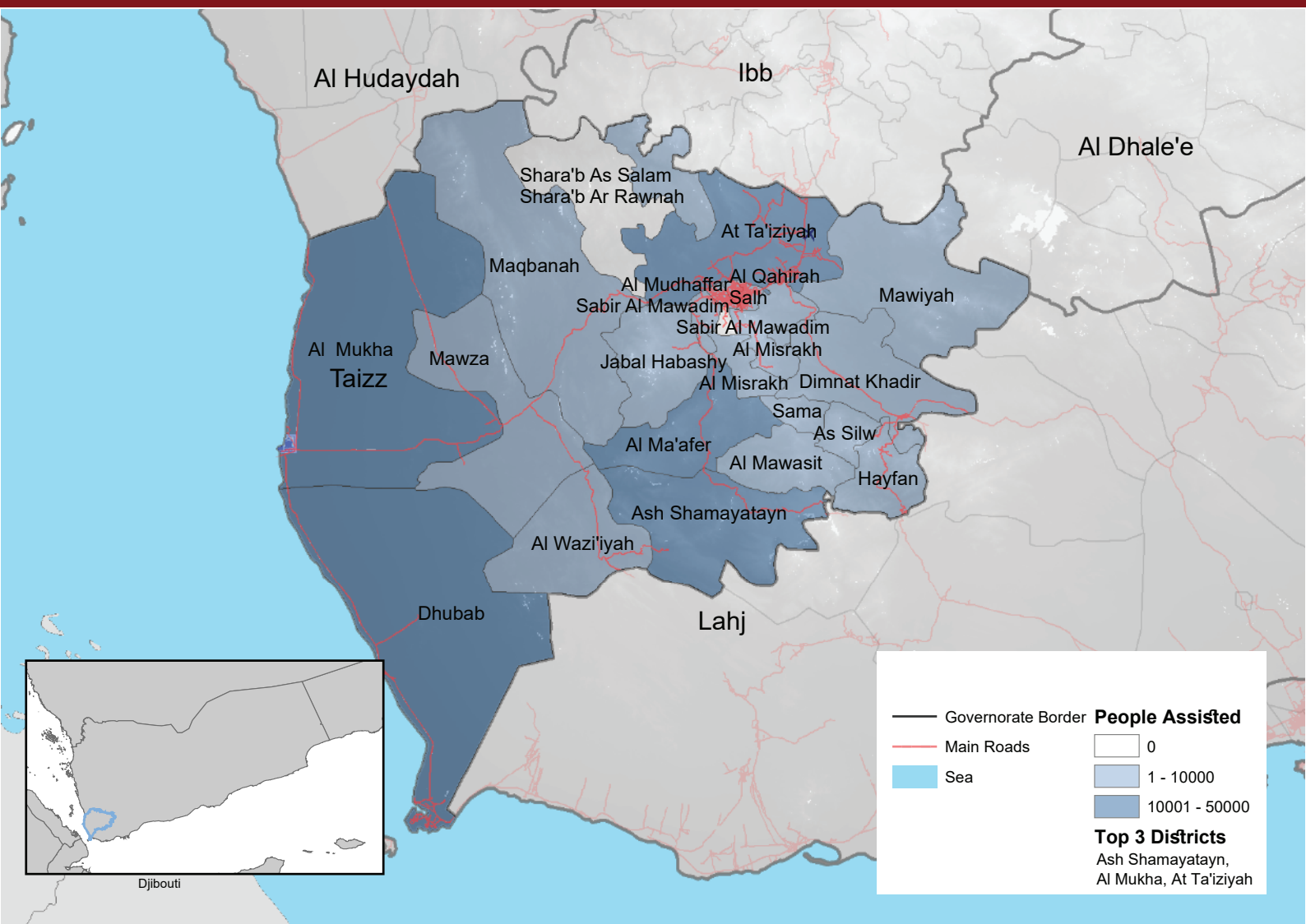


Modality of Assistance

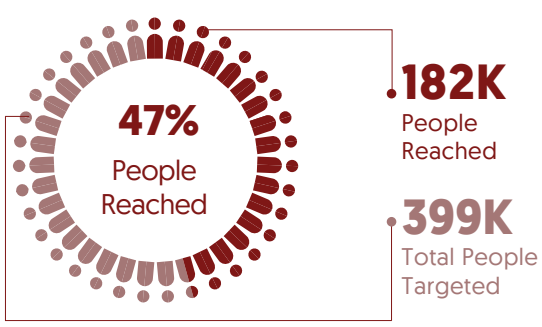


Assistance Vs Population Groups

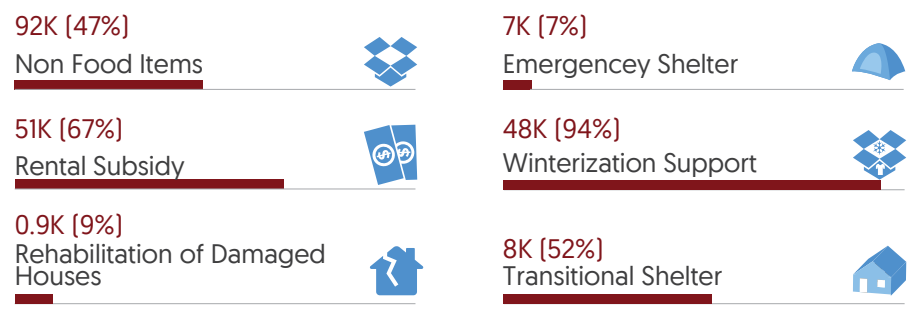




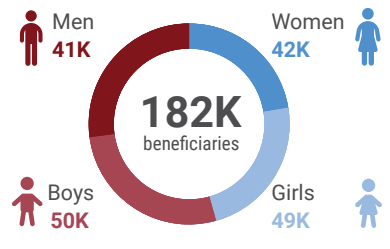
Target vs Reach



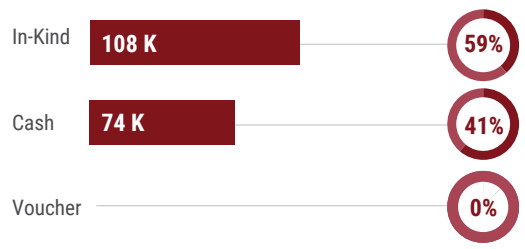
Completion of Activities (To 6)



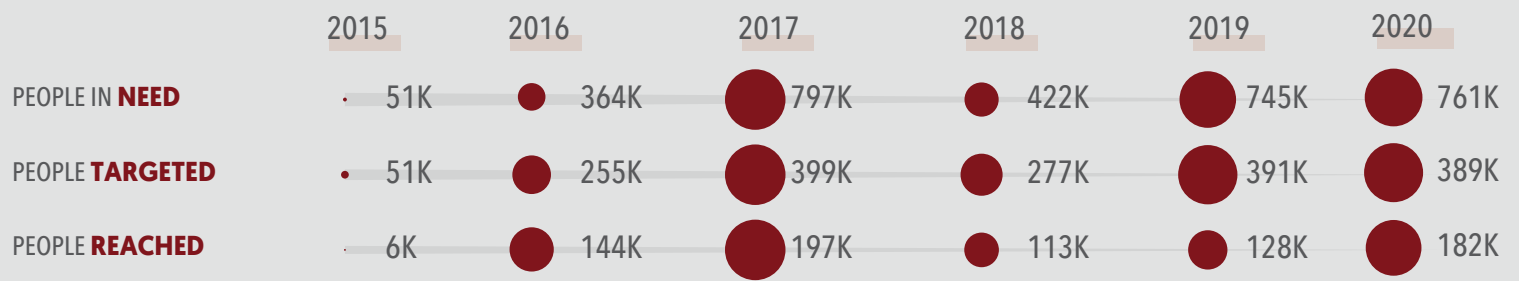
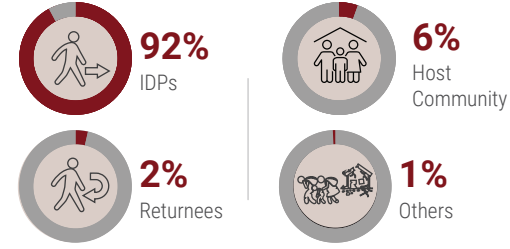
Age/Gender Breakdown



Modality of Assistance



Assistance Vs Population Groups



Shelter Cluster Coordination Structure (as of June 2021)



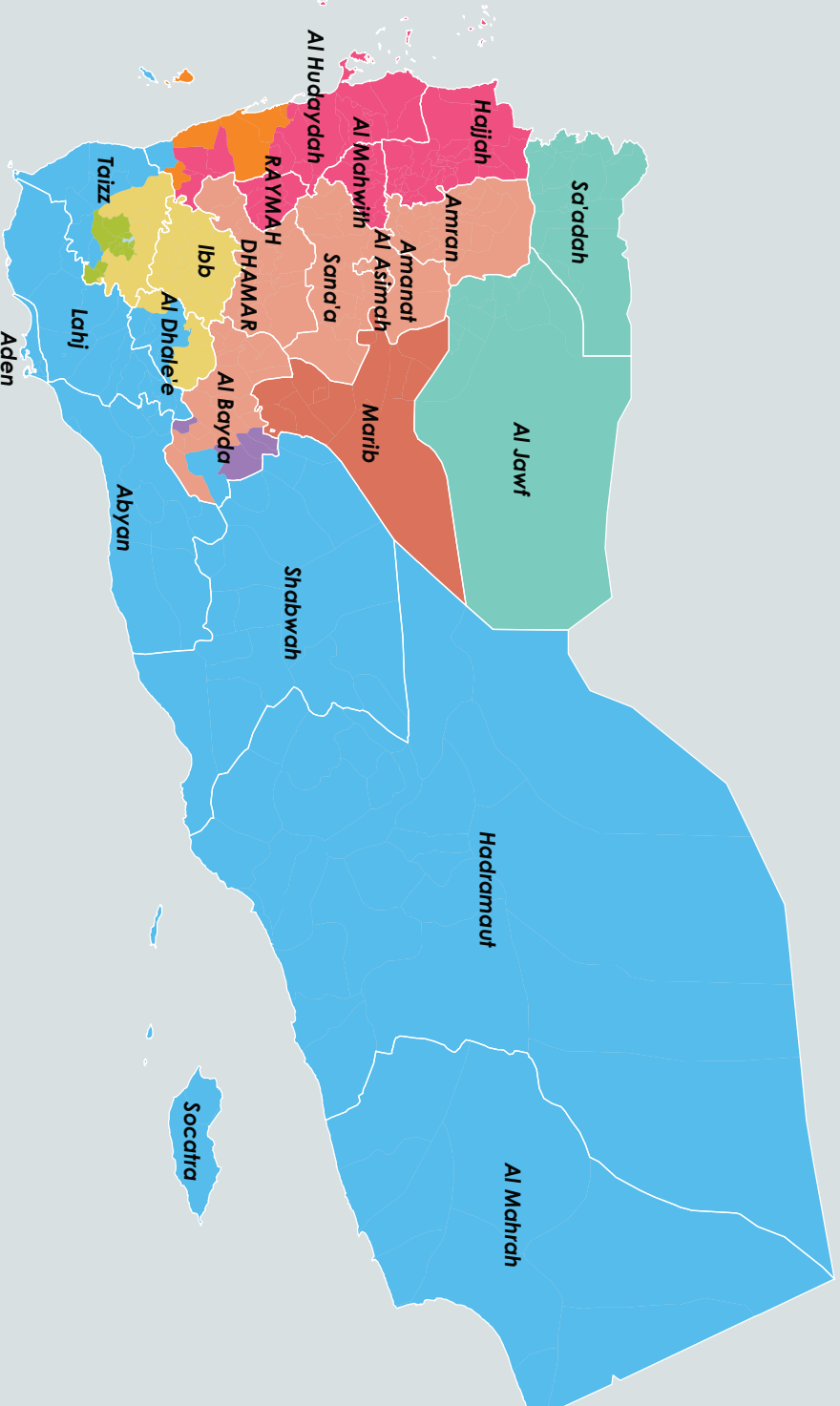
Shelter Cluster Yemen
ShelterCluster.org
Coordinating Humanitarian Shelter

National Cluster Coordination Team

Igor Chantefort (UNHCR)
National Cluster Coordinator
Mobile: +967712225131
Email: cooord.yemen@sheltercluster.org

Monir AISobari (UNHCR)
Deputy National Cluster Coordinator
Mobile: +967712225045
Email: deppcoord.yemen@sheltercluster.org

Ali Al-Eryani (UNHCR)
Information Manager
Mobile: +967712225122
Email: im.yemen@sheltercluster.org



Note: Marib hub is under process to be endorsed by the HCT

Omar Al Ragawi (UNHCR)
+967712225133

Essam Al Washaly (NRC)
+967771577877
sanaa.yemen@sheltercluster.org

+
Helal Ahmed (NRC)
+967775156059
hajjah.yemen@sheltercluster.org

Esam Al-Duais (UNHCR)
+967711695133
aden.yemen@sheltercluster.org

Saleem Al Azazi (NRC)
+9677772665677
taizz.yemen@sheltercluster.org

Alezz Bin Abdulsalam (UNHCR)
+967712225178
ibb.yemen@sheltercluster.org

Mohammed Al Kenani (UNHCR)
+967712225012
saadah.yemen@sheltercluster.org

Zakarya Yaslam (SHS)
+96771884007
marib.yemen@sheltercluster.org

Sana'a

Al Hudaydah

Aden - covering Aden,
Al Mukalla hubs and
South Taizz

Ibb - cover Ibb
and North Taizz

Saadah

Marib

Update date: 01 Jun, 2020

Sources: Cluster Coordination team.

Feedback: im.yemen@sheltercluster.org

<http://www.sheltercluster.org>

<https://www.humanitarianresponse.info>

<http://reliefweb.int/>

"The boundaries and names shown and the designations used on this map do not imply official endorsement or acceptance by the United Nations."

Twitter: @ShelterClusterYEM