

Sub-national coordination & handover





MapAction

Nepal Earthquake: Earthquake epicentres (up to 12 May 2015 14:00) and 'Priority' and 'Additional' affected districts

Map shows Priority Affected Districts as designated by the Government of Nepal in the week following the original earthquake, and Additional Affected Districts designated on 10 May 2015. It also shows all earthquake epicentres up to 12 May 2015 14:00. Note that the affected districts have not been updated to reflect the most recent series of aftershocks.

Data sources:
Situational data: Ministry of Home Affairs
Boundaries: UN OCHA
Settlements: GDM
Physical features: Geonode
Earthquake Epicentres: USGS

○ District Headquarters

Settlements

• Village

• Town

• City

Roads

— Primary

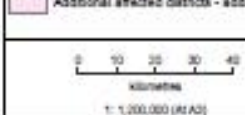
— Secondary

— Tertiary

□ Less affected districts

□ Priority affected districts

□ Additional affected districts - added 10 May



Created: 12 May 2015 / 15:00 UTC+5:45

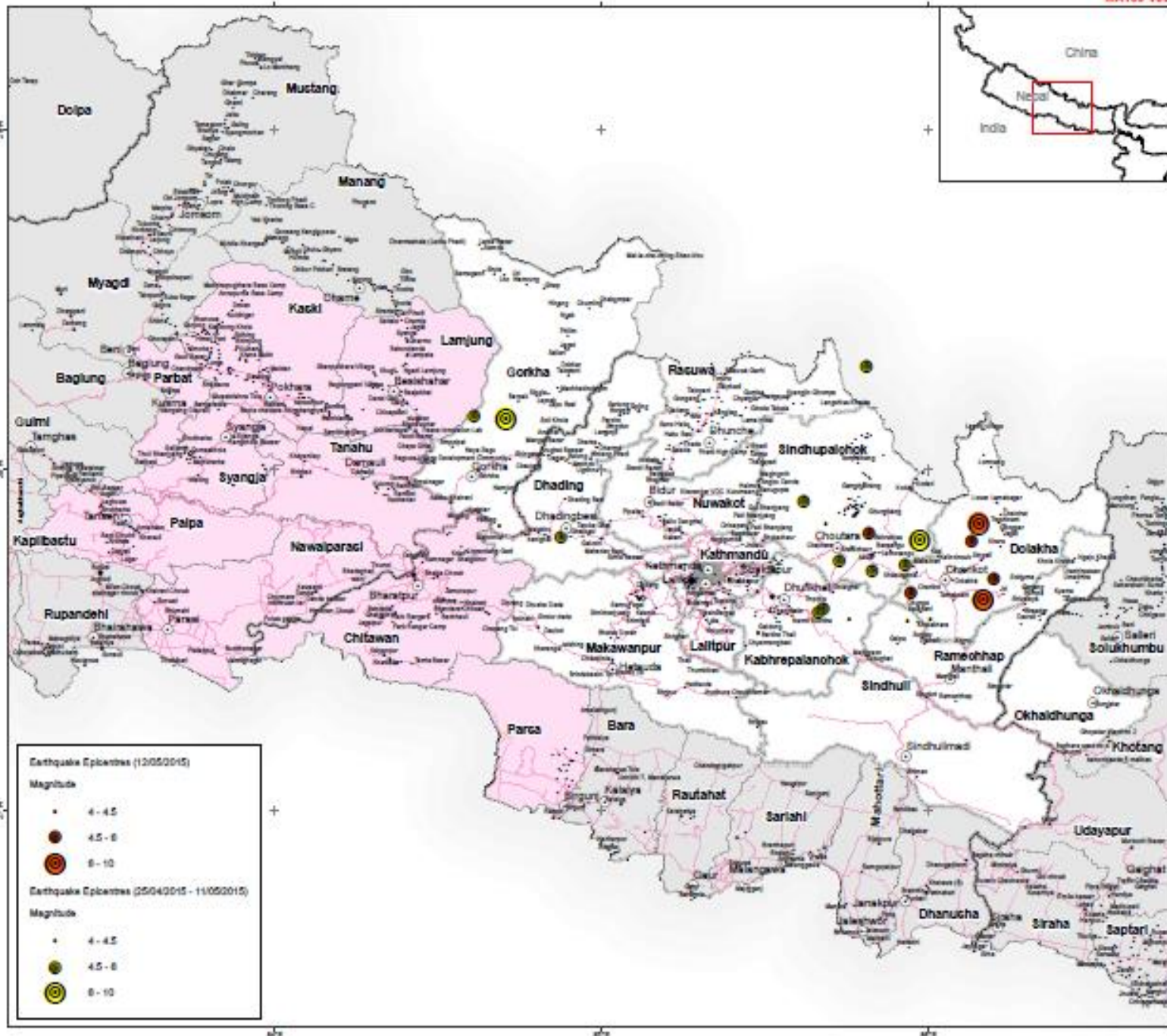
Map Document: MA109_V02_PriorityAffectedDistricts

Projection / Datum: WGS 1984

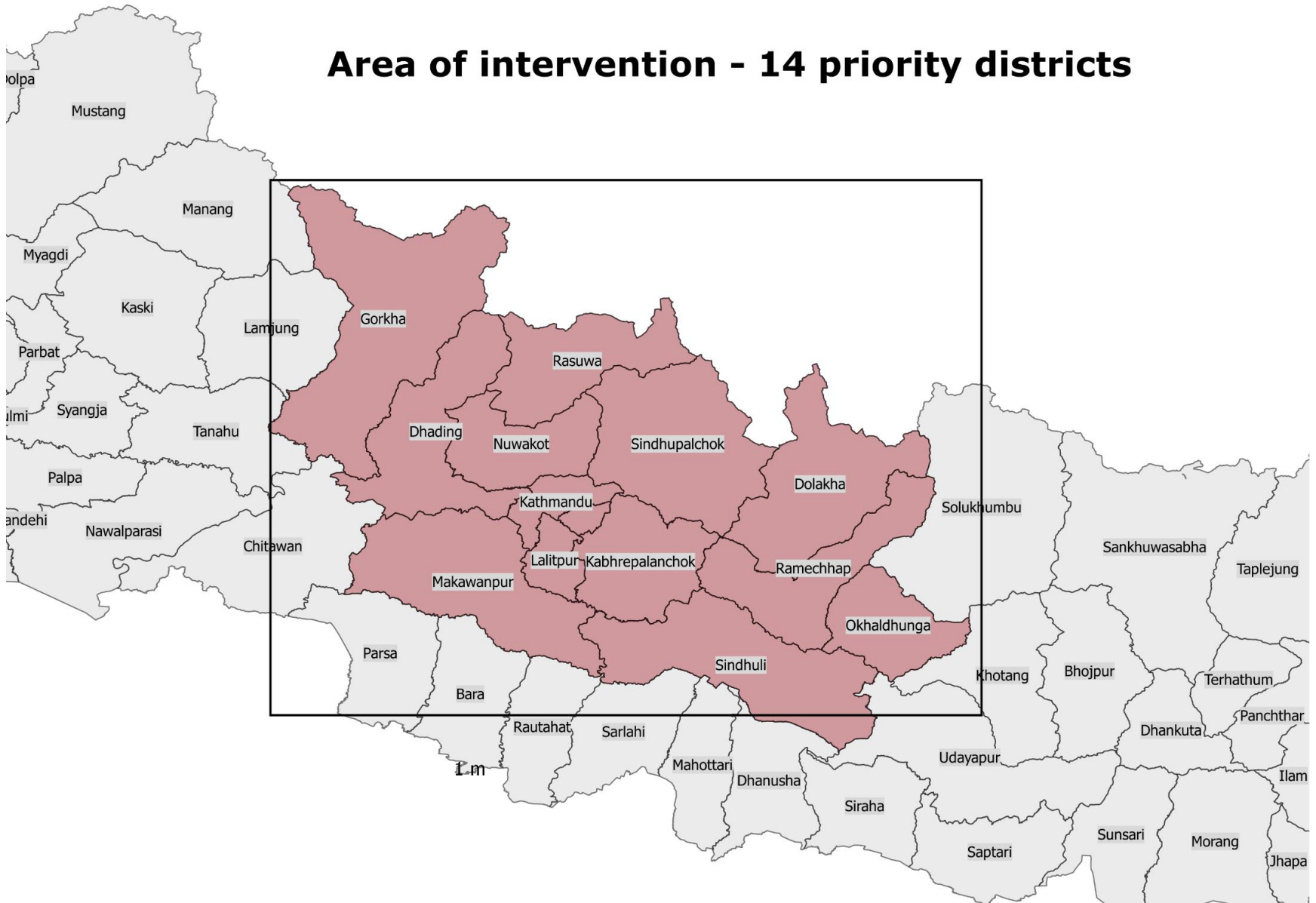
Grid Number: EQ-3015-00049-NPL

Produced by MapAction:
www.mapaction.org
NPLA@mapaction.org

The depiction and use of
boundaries, names and associated
data shown here do not imply
endorsement or acceptance by
MapAction.



Area of intervention - 14 priority districts













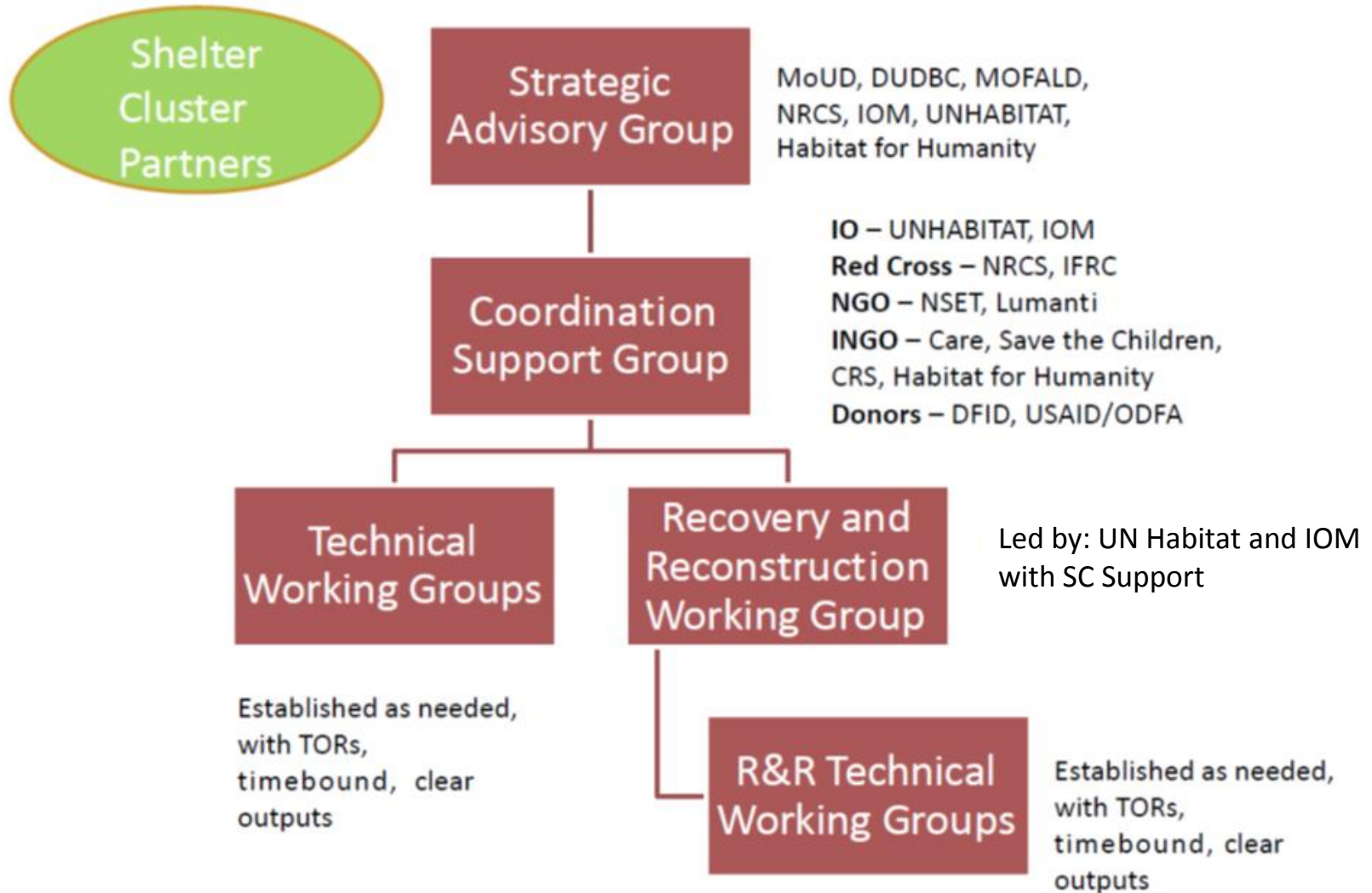




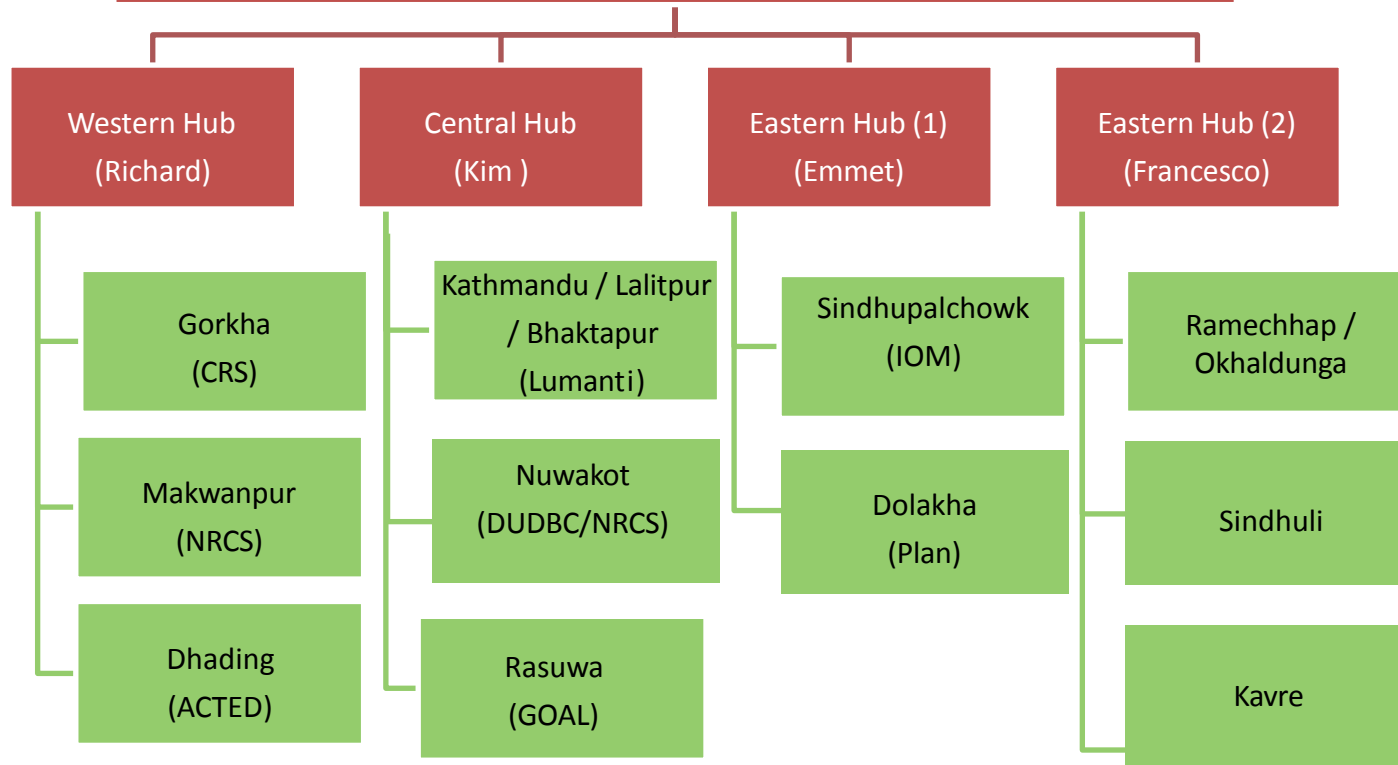




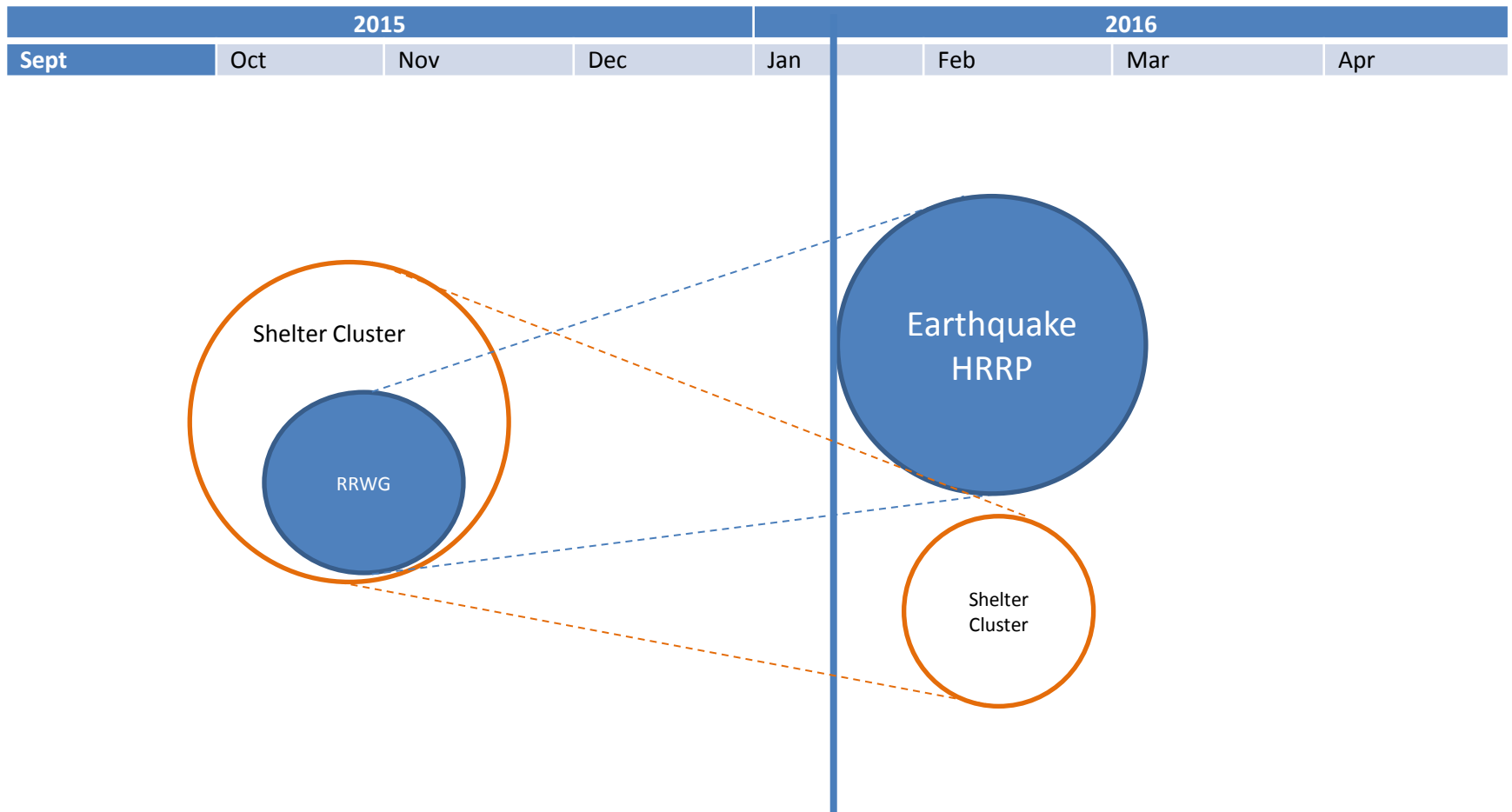
SC Coordination Architecture

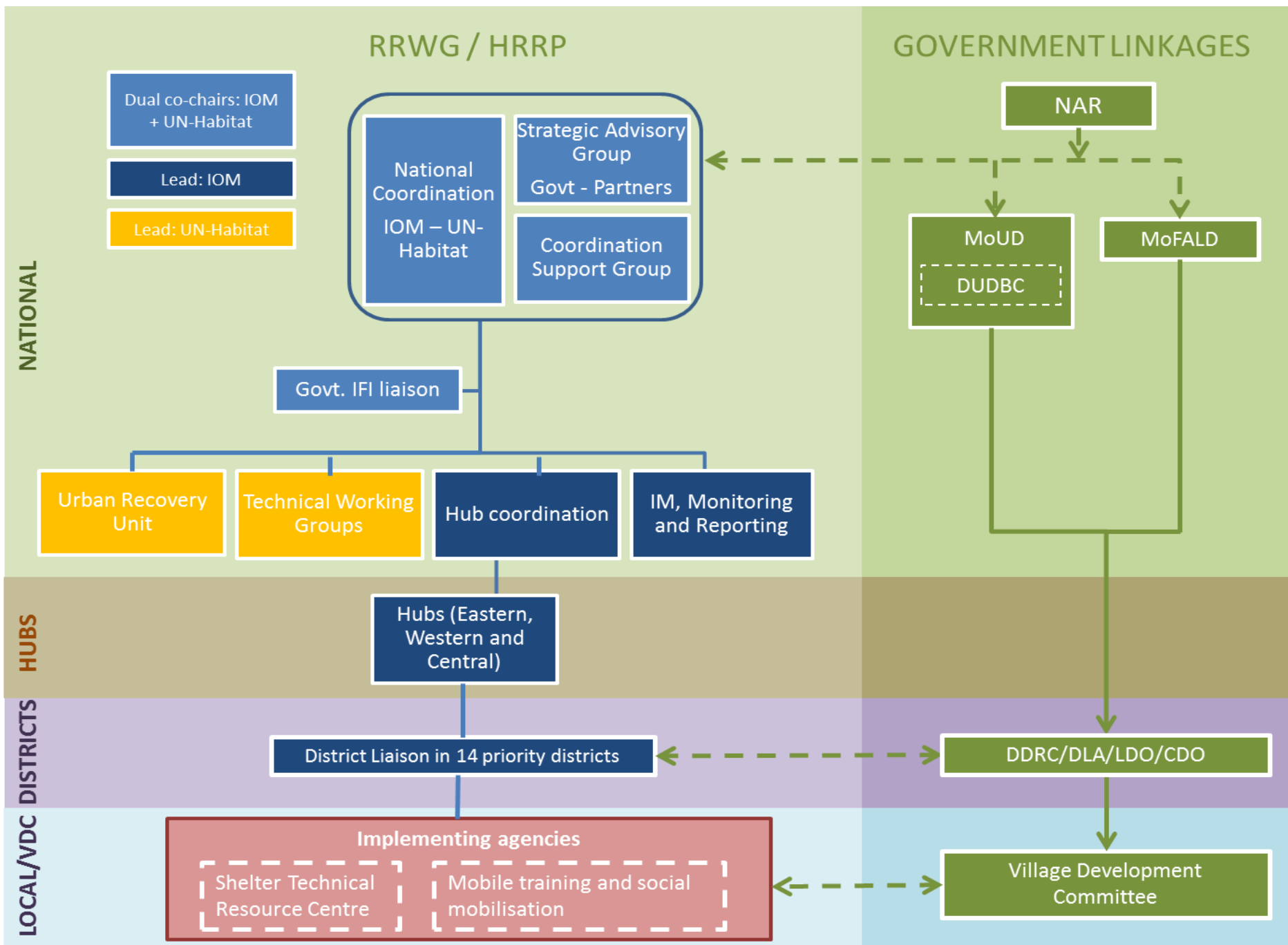


Shelter Cluster Hub Coordination

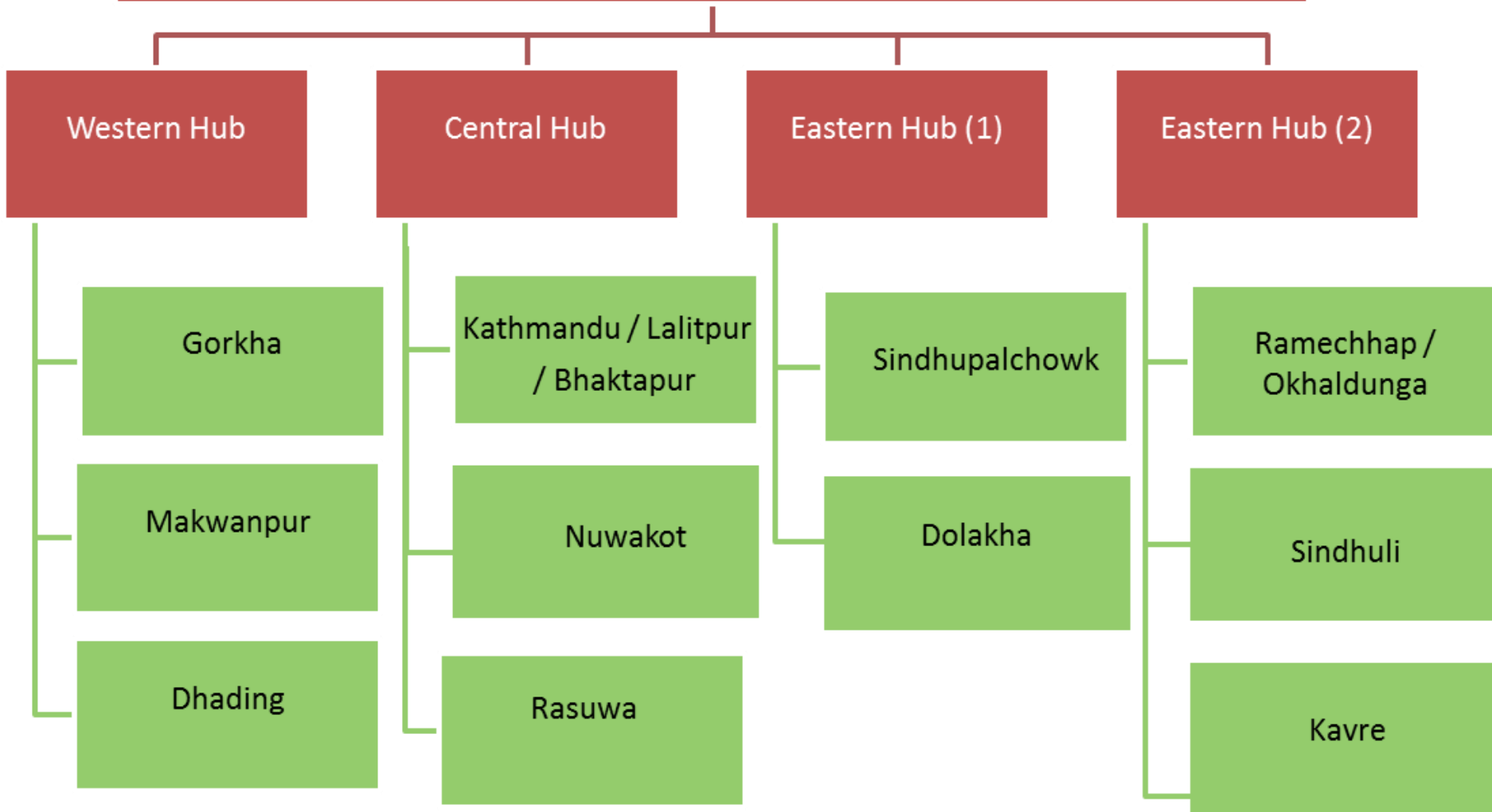


Transition: Shelter Cluster to Earthquake HRRP





RRWG/HRRP Hub & District Coordination



HRRP objectives

- Support the GON (MOUD/DUDBC, MOFALD, NAR) in the coordination of national and international organisations, private sector and public associations involved in housing recovery;
- Ensure the dissemination of consistent policy and technical information from the national to the district and VDC-level actors
- Support information management to track housing recovery and reconstruction activities conducted by different agencies at national, district and VDC levels
- Ensure timely and harmonized reporting from the field to the national level, to donors and government partners



Engagement of local actors/Private Sector



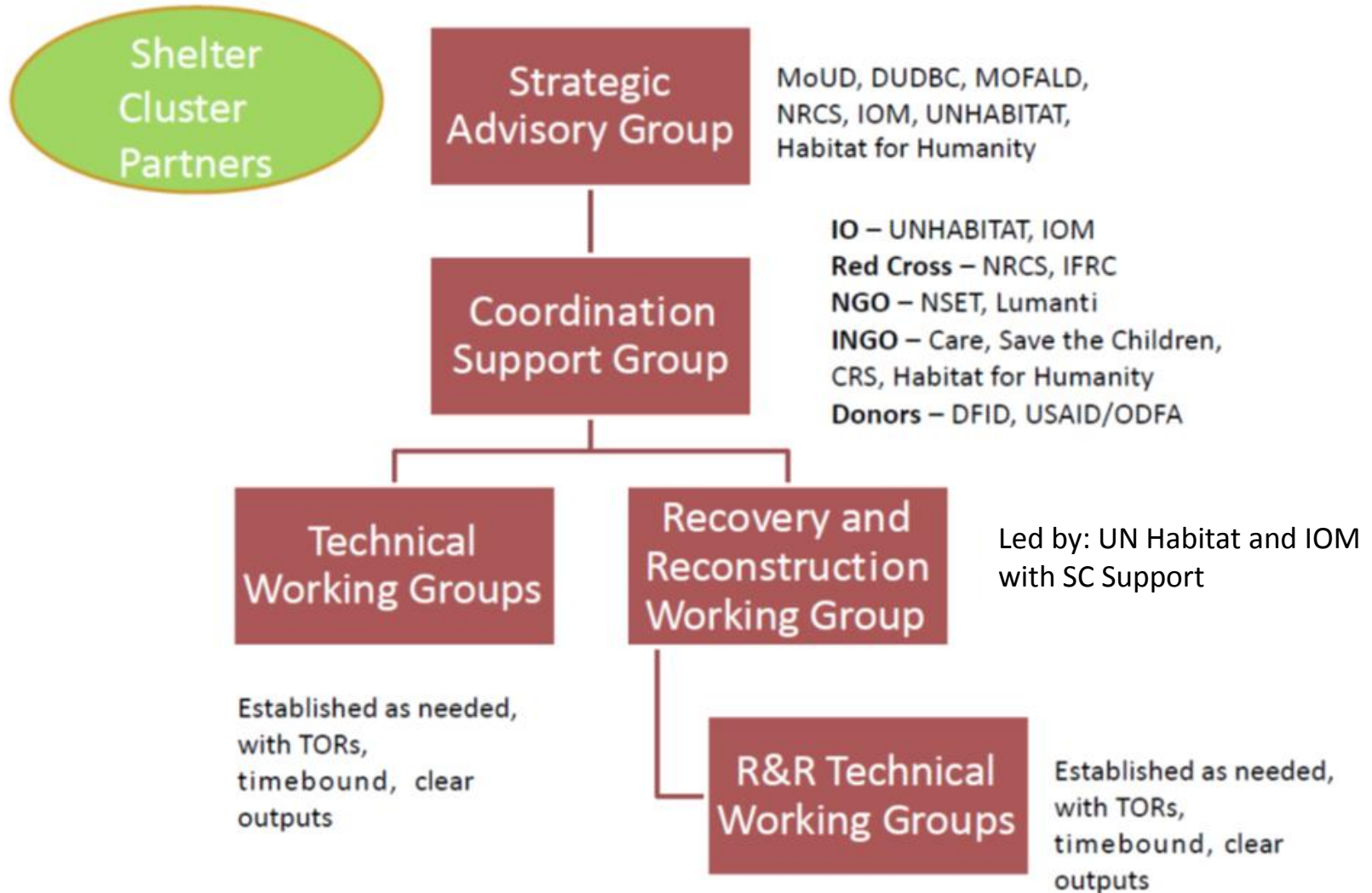


Private Sector Key Findings

- Cluster recruited PS coordinator
- 134/500 respondents
- 189,000 HH reached with tarps/tents
- 18,000 HH reached with T-Shelters
- 15,000 HH reached with CGI
- Awareness of SC technical guidance

PS organisations reached c. 25% of HH across the 14 priority districts and a focus on non-priority areas.

NGO Engagement



Shelter Cluster Hub Coordination

