



Syria. Helping survivors of the battle for Aleppo:

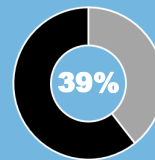
Tens of thousands of civilians fled the epicenter of the battle for Aleppo in 2016 with virtually nothing. At a series of collective centers, UNHCR and other agencies provided them with emergency shelter, food, warm blankets and winter clothing.

© UNHCR Syria / D. Alnaeb

KEY POINTS

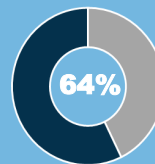
- With the intensification of military offensive in rebel-held Eastern Aleppo in 24 November, more civilians were either displaced or remain trapped in besieged areas. Where access is permitted, some NFI Sector partners such as DRC, IOM, Oxfam, Syrian Arab Red Crescent (SARC), UNICEF, and UNHCR were quick to respond. Around 6,763 families (33,815 persons) were assisted out of the estimated 40,000 persons displaced from Eastern Aleppo in November. Limited access to displaced population due to restricted movement and irregular if not lack of physical access granted to humanitarian agencies has hampered the delivery of adequate and immediate response to all population in need. Mortar shelling around UN hub suspended its planned humanitarian activities in Aleppo.
- The sector participated in an inter-agency convoy in November in Ar Rastan community in Homs governorate. Around 1,500 families (estimated 7,500 persons) received 13,000 core relief items composed of blanket, mattress, kitchen set, jerry cans, and solar lamps. SARC led the distribution.
- With the completion of NFI partner's project submission as part of the Humanitarian Response Plan for 2017, government consultation commenced in November. NFI sector co-ordination team discussed with various government ministries the fundamentals of NFI sector plans. For 2017, the sector aims to address the needs for basic essential items of around 5.8 million population in need in Syria by being more flexible in its response highlighting the aim to provide targeted assistance.
- The Humanitarian Needs Overview for 2017 has been officially published. According to this report, around 5.8 million population in need of basic non-food items of which 4.2 million have acute needs. The increase in number from 2016 which is 5.3 million is attributed to worsening poverty situation due to unending hostilities and violence in the country. Aleppo has the highest severity ranking in terms of NFI access among the 14 governorates in Syria. The report further states that along with the challenge to provide emergency to alleviate the suffering of the population in need is the capacity of humanitarian actors to ensure resilience of the Syrian people and provide long-term interventions that helps promote community cohesion and self-respect.

KEY DIGITS



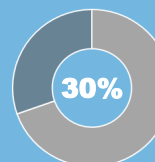
5.3 million
people in need of NFI

Estimate number of people in Syria in need of basic non-food items (39% of the estimated 13.5 million people in need of humanitarian support in 2016)



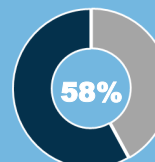
3.4 million
people received at least 1 item

Estimate number of people who received at least one NFI item from January to November 2016 (64% of the total 5.3 million people in need of NFI).



1.6 million
people received more than 4 items

Estimate people who were considered adequately served for receiving more than 4 NFI items from January to November 2016 (30% of the total 5.3 million people in need of NFI).



158
reached sub-districts

Total number of sub-districts reached from January to November 2016 (58% of the total 272 sub-districts in Syria).



8.8 million
NFI items distributed

Total number of NFI items distributed from January to November 2016

3.2 million
NFI stocks prepositioned

Estimate number of NFI items prepositioned as of November 2016

GAPS AND CHALLENGES

- Widespread insecurity, challenging physical access and rigorous bureaucratic procedures and approval limit provision of adequate and regular humanitarian assistance especially to those who live in besieged and hard-to-reach areas;
- Absence of age and gender disaggregated information of population in need unable the sector to accommodate and target specific needs;
- Logistical constraints especially during inter-agency convoy such as, road blockage, presence of checkpoints, and presence of threats continue to hamper rapid distribution;
- Lack of actual data on distribution recipients prevent the sector to better measure the actual reached and served beneficiaries;
- Limited and irregular monitoring of distribution due to insecurity and sensitivities compromise the ability of the sector to assess the impact of its assistance and better inform future planning;
- Absence of clear and effective feedback mechanism from population in need due to information gathering sensitivities unable the sector to better determine the efficacy of its effort;
- Lack of income generating activities to provide the necessary financial means continues to hamper access to basic household items among the most vulnerable population in need;
- Diminishing active participation among sector members affects coordination and the overall sectorial reach;
- Inexact coordination structure impacts the level of efficiency in coordinating sectorial response for inter-agency convoys.
- Lack of reliable consolidated information for inter-agency convoy reach affects the sector's ability to determine the extent and impact of its convoy contribution

CRISIS BACKGROUND: *The crisis in Syrian Arab Republic that started in March 2011 has transformed into a multi-sided armed conflict that displaced around 6.2 million people and forced around 5 million people out of the country to seek asylum. As per the Humanitarian Needs Overview in 2017 (to be published), around 13.5 million people are in need of humanitarian support of which around 5.8 million people are desperate to receive essential household items and other multi-sectorial assistance as they continue to struggle in insecure areas. The degree of resilience and positive coping mechanism of the affected population have reduced due to the protracted nature of the conflict. Purchasing power and the ability to provide for their basic household needs have decreased due to economic recession that left thousands of Syrian people unemployed and the prospect of accessing essential household items has also declined due to closure of essential service providers.*



PARTNER IN FOCUS



Who are we?

DERD was established in 1994, launching a number of relief and development programs, carried out by a team of volunteers who are scattered all over Syria.

Our Goals:

We seek to offer help to those who are in the utmost need, ensuring that all the efforts are made to provide a fair service to all, in an attempt to spread the spirit of humanity, justice, tranquility and peace within these communities where we operate.

We build cooperation bridges with various civil society groups in order to reach a wider segment of those in need and those who are affected.

We develop partnerships with local, regional and international organizations, which share our visions and goals, heading together towards achieving the highest degree of professionalism and methods in designing and executing the activities of the diverse Programs that we implement.

GOPA-DERD role during the crisis:

DERD's activities expanded as a result of the immigration of the Iraqis to Syria after having to suffer forced displacement.

DERD worked hard to offer them care through a comprehensive Program, supporting them in several aspects including: education, vocational training, psychosocial support, health awareness activities and many more.

Since the beginning of the Syrian crisis, DERD rushed to launch its programs and recruit its team members' efforts to meet the needs of the affected and displaced people. These programs aim to provide services to all family members taking into consideration the importance of covering all their needs as much as possible.

NFI Sector Coordination Team

Joel Andersson, Senior NFI Sector Coordinator (anderssj@unhcr.org)

Jinan Ramadan, NFI Sector Field Associate (ramadanj@unhcr.org)

Muhammad Shahzad, IM Officer (shahzadm@unhcr.org)

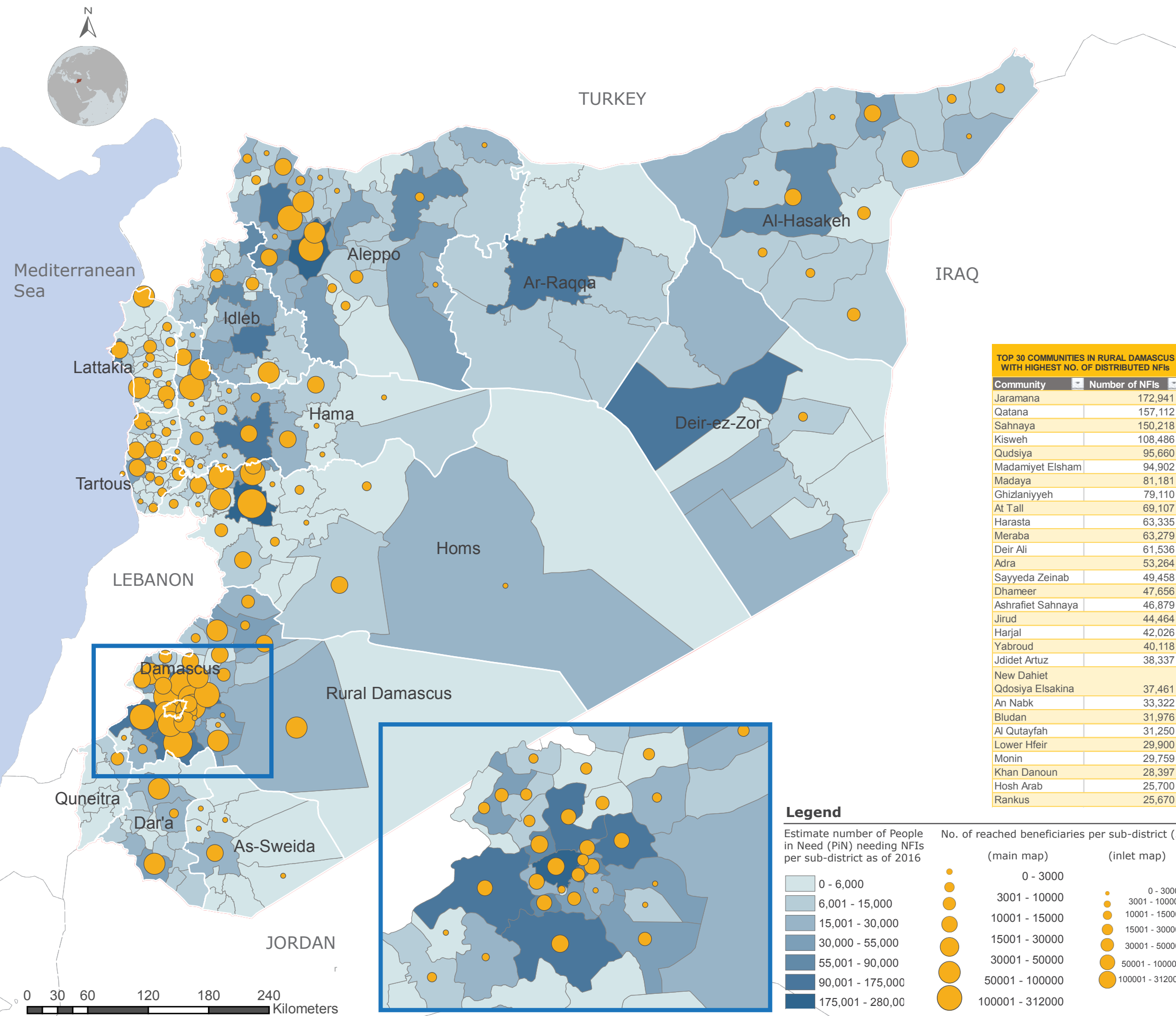
Corazon C. Lagamayo, IM Officer (lagamayo@unhcr.org)

Maha Shaban, IM Associate (shabanm@unhcr.org)



SYRIA: NFI RESPONSE

Reporting Period: January - November 2016



TOTAL BENEFICIARIES REACHED / SERVED

3,396,976

PEOPLE WHO RECEIVED AT LEAST 1 NFI

OVERALL REACHED VS OVERALL PEOPLE IN NEED (NFI)



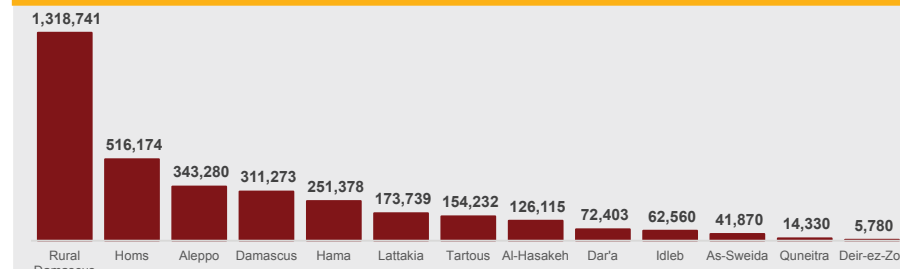
1,619,549

PEOPLE WHO RECEIVED MORE THAN 4 NFIs

OVERALL SERVED VS OVERALL PEOPLE IN NEED (NFI)



TOTAL BENEFICIARIES PER GOVERNORATE

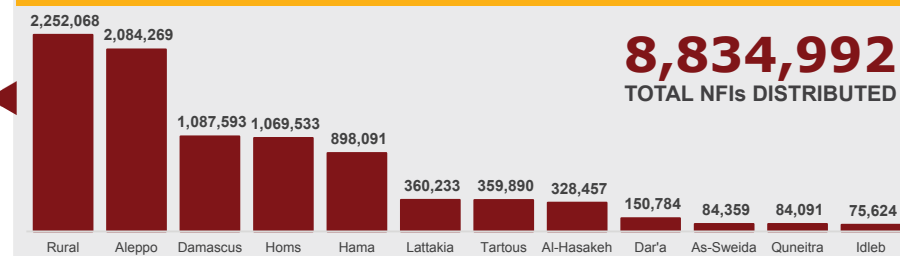


BENEFICIARIES REACHED BY TYPE OF SUPPORT



NOTE: Breakdown of beneficiaries per type of support does not necessarily sum up to the reported number of beneficiaries as some communities may have received more than one type of assistance.

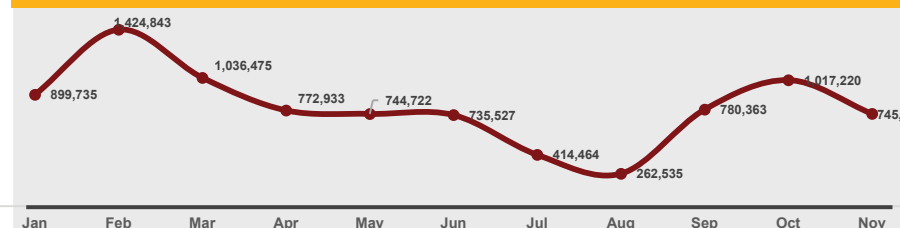
TOTAL NFI DISTRIBUTED PER GOVERNORATE



TOTAL NFI DISTRIBUTED PER TYPE



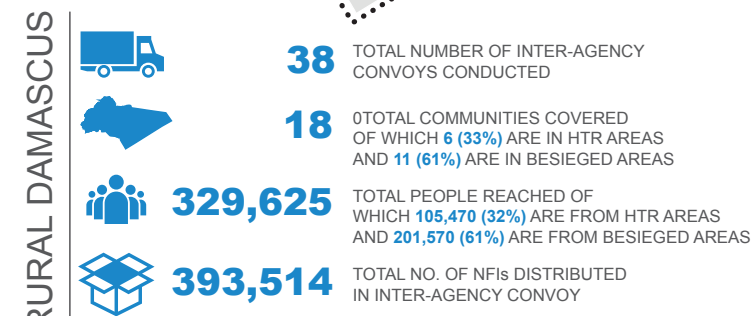
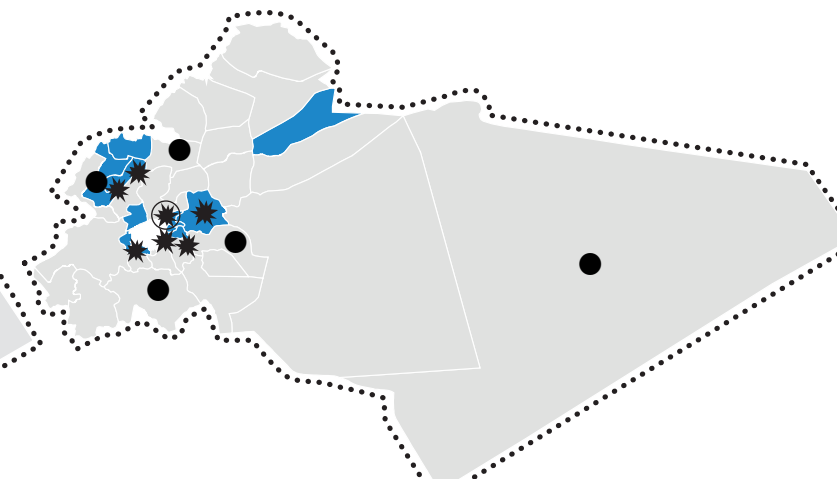
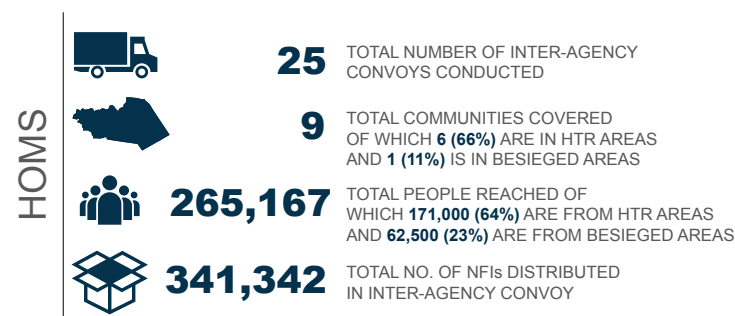
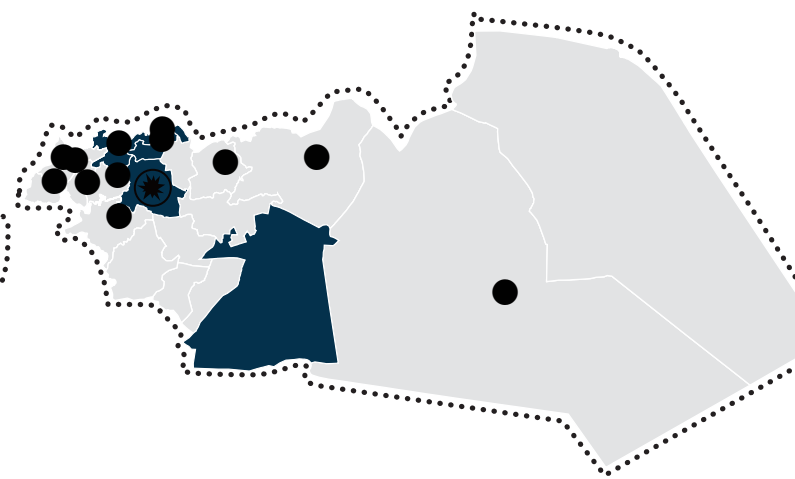
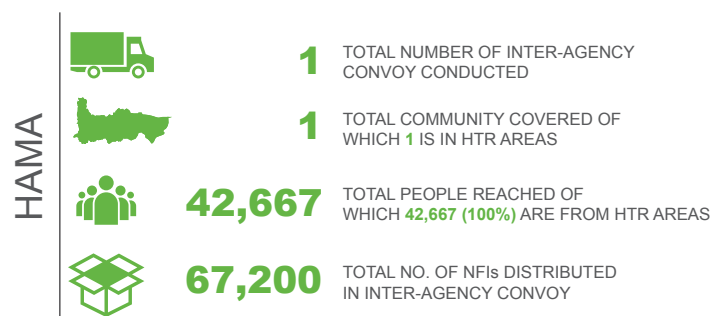
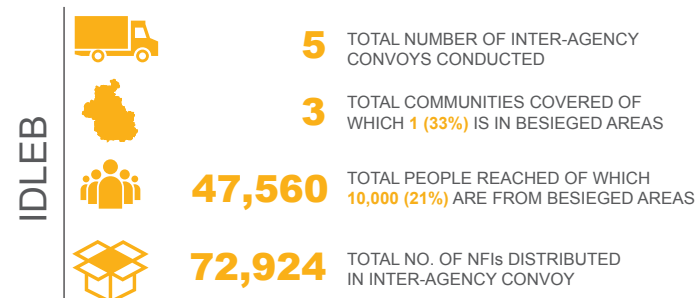
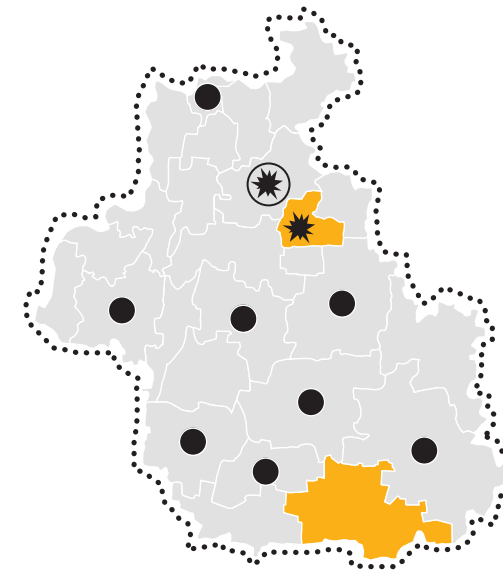
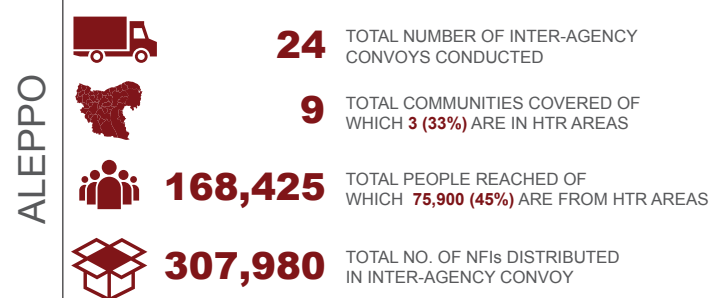
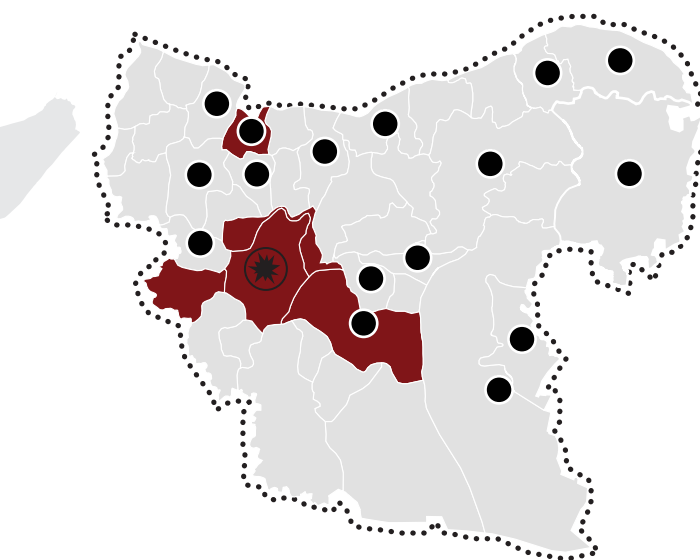
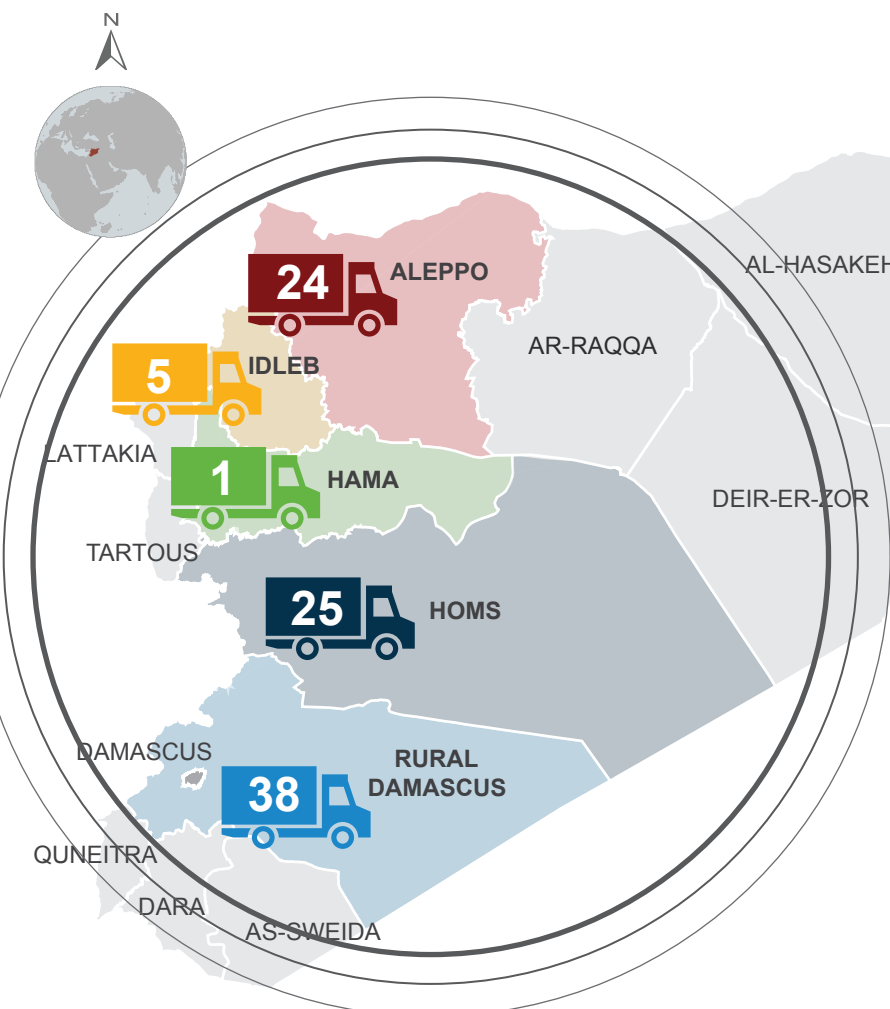
TOTAL NFI DISTRIBUTION PER MONTH



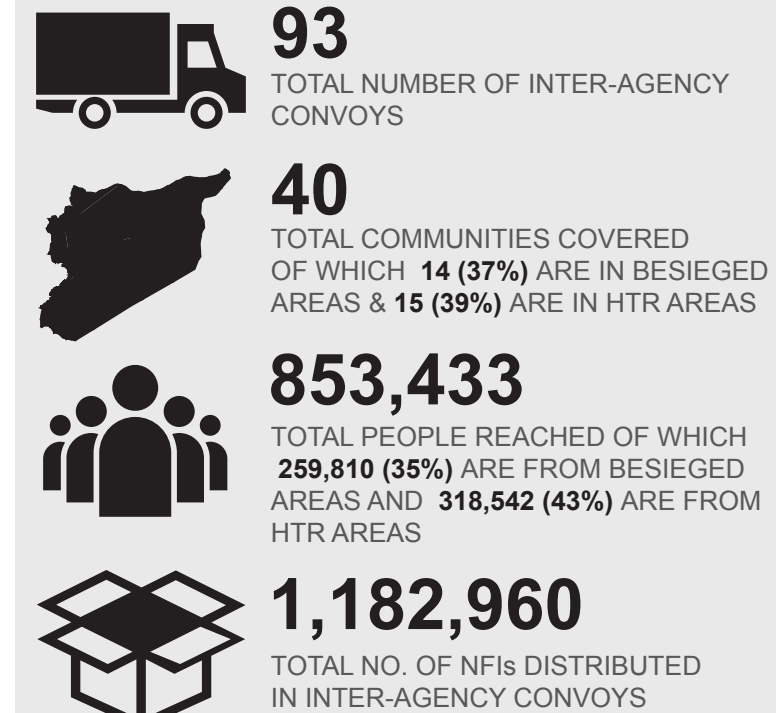


SYRIA: INTER-AGENCY CONVOY

Reporting Period: January - November 2016



SUMMARY



NAME OF BESIEGED AND HTR COMMUNITIES COVERED BY INTER-AGENCY CONVOY

GOVERNORATE	HARD-TO-REACH COMMUNITIES	BESIEGED COMMUNITIES
ALEPPO	● AFRIN ● ALEPPO CITY ● HAJEB ● NABUL ● TALL REFAAT	
IDLEB		* FOAH
HAMA	● MADIQ CASTLE	
HOMS	● AR-RASTAN ● DAR KABIRA ● HOMS CITY ● KAFR LAHA ● TALBISEH ● TALDU ● TIR MAALAH	
RURAL DAMASCUS	● BLUDAN ● JIRUD ● QUDSIYA ● SARGHAVA	* ARBIN * AZ-ZABDANI * BEIT SAWA * DARRAYA * DUMA * EIN TERMA * HAMMURA * HARASTA * HEZZEH * JISREIN * KAFR BATNA * MADAMIYET * ELSHAM * MADAYA * SAGBA

LEGEND

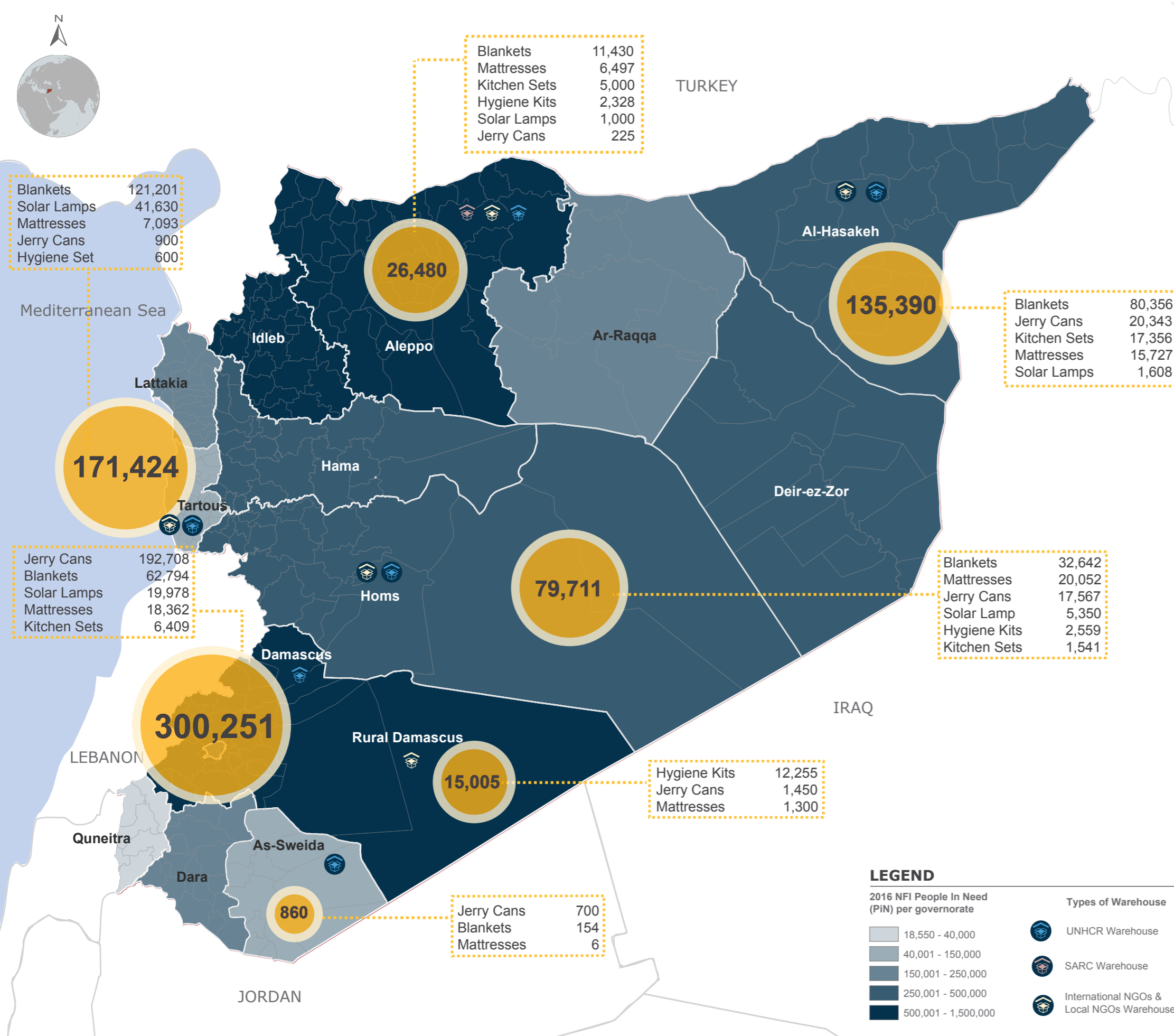
- No. of inter-agency convoys (IACs)
- No. of beneficiaries (persons) reached by IACs
- Sub-districts with besieged communities
- Sub-districts with (HTR) hard-to-reach communities
- Sub-districts with besieged and HTR communities
- No. of distributed non-food items

FOOTNOTE/S:
 A. The information presented here only shows UNHCR, UNICEF, UNRWA, UNFPA, IOM convoys.
 B. One convoy is counted as one completed trip.



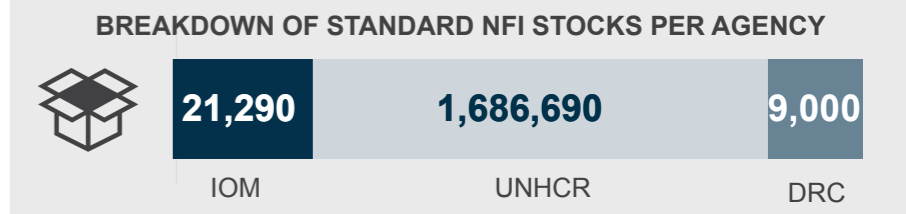
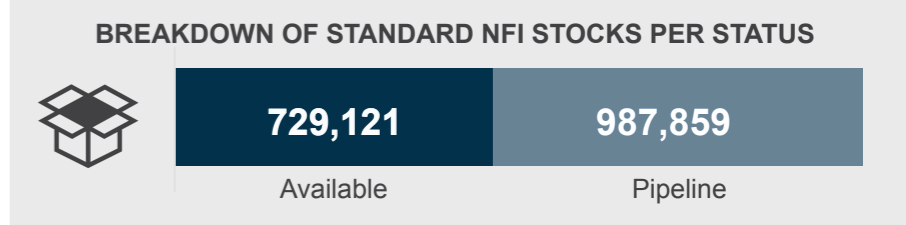
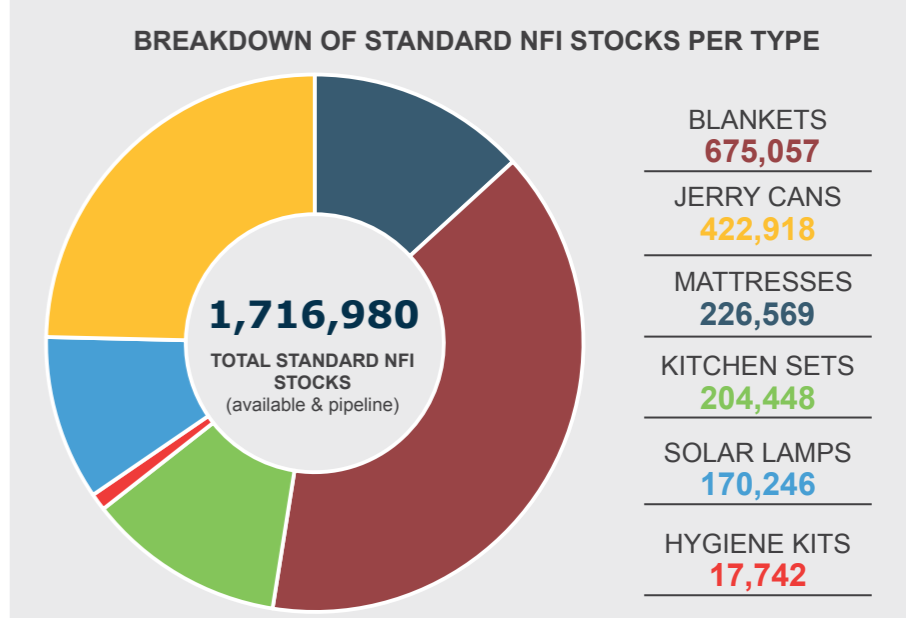
SYRIA: NFI STOCKPILE

Reporting Period: December 2016



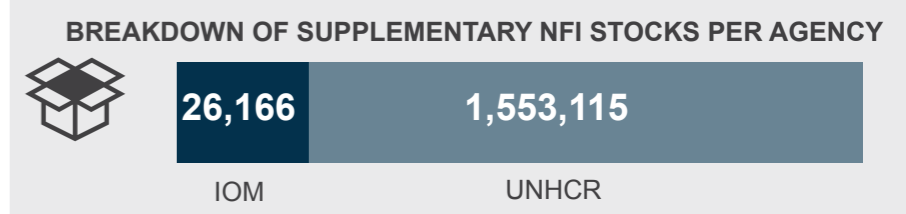
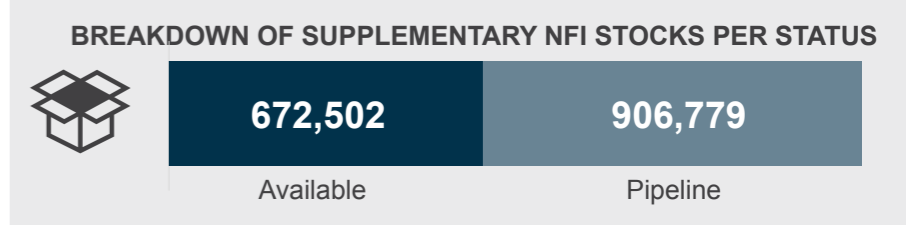
3,296,261 TOTAL STANDARD AND SUPPLEMENTARY NFI STOCKS FOR DECEMBER

STANDARD NON-FOOD ITEMS



SUPPLEMENTARY NON-FOOD ITEMS

1,579,281 TOTAL SUPPLEMENTARY NFI (available and pipeline)



LEGEND

2016 NFI People In Need (PiN) per governorate

- 18,550 - 40,000
- 40,001 - 150,000
- 150,001 - 250,000
- 250,001 - 500,000
- 500,001 - 1,500,000

Types of Warehouse

- UNHCR Warehouse
- SARC Warehouse
- International NGOs & Local NGOs Warehouse