



**GSC Working Groups (WGs) and
Communities of Practice (CoPs)**



Introduction

Karabo Ntisané, 18, stands in front of her home in Mafateng district, Lesotho. After her father passed away at a very young age and her mother left to find work, Karabo has had to become a parent to her two sisters too young.

Photo: Lesotho Red Cross



Disability Inclusion WG

Support integrating a wider and more systematic disability inclusive approach to programming

How:

- Understand the reality of disability inclusion in shelter and settlements programming
- Act as a forum to bring organisations, sectors and actors together to share good practices
- Test and review the efficacy of All Under One Roof (AUOR) and other inclusive guidance
- Disseminate GSC tools and Standards for use by cluster members, OPDs and other actors
- Plan for inclusive shelter support in emergency operations (including contributing to Disability Reference Group through periodic inputs and coordination)

Disability Inclusion WG

Supporting in depth case studies in different contexts

- IOM Nigeria: Shelter & Settlements Improvements for Persons with Disabilities
- Disability Inclusion Field Study – Cox's Bazaar

Contribution to development of research pieces

- Investigating barriers to inclusion of persons with disabilities in humanitarian shelter and settlements programming and looking at what changes and support are needed to deliver and sustain more inclusive programming

Disability Inclusion WG

Accessible and Inclusive IEC Materials

- Aim to make IEC materials accessible for all
- Consult with different groups
- Promote inclusion through messaging
- Allocate additional budget and resourcing



iec.sheltercluster.org

The Shelter Compendium

INFORMATION, EDUCATION AND COMMUNICATION MATERIALS
FOR SHELTER AND SETTLEMENTS PROGRAMMING



Example Tips:

Easy Read Format

- Conveying one message in each sentence
- Using short sentences
- Using only one verb
- Using active sentences

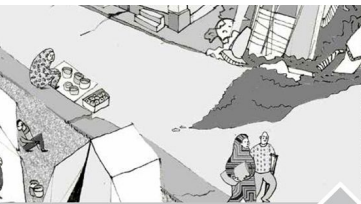
Colours

Carefully choose colours and colour combinations

Easier to read

Hard to read

Disability Inclusion WG



While many barriers will remain for a long time after the crisis, reconstruct



A3. Early recovery

In the early recovery phase, persistent influence over the shelter foundations are laid during preparation.

Chapter overview

A3.1 Disability awareness in early

A3.2 Inclusion in post-disaster need

A3.3 Early recovery shelter and settlement

Outcomes of preparedness and emergency response:

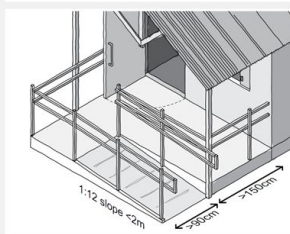
Active involvement of DPOs and establishment of local networks (→A1.1 & →A2.1)

Persons with disabilities identified and included in assessments (→A1.2 & →A2.2)

Dedicated funding for accessibility and indicators for inclusion in project proposals (→A2.1)

International Federation of Red Cross and Red Crescent Societies Disability-inclusive shelter and settlements in emergencies

- Ramp (private shelter)** ^{B2.2.2}
If necessary, provide a ramp to reach the entrance, with maximum 1:10 or 1:12 slope, minimum 90 cm width with a 5-10 cm curb and a non-slip surface.
- Shaded porch** ^{B2.2.3}
Include a shaded porch in the design, at least 150 cm wide so that a person in a wheelchair can turn around and open the door. Build a seat for rest opportunities.
- Handrails** ^{B2.2.4}
Install handrails on ramps and porch to improve access and safety for persons with reduced mobility or visual impairment.

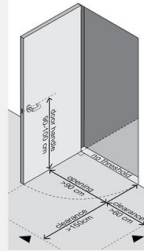


² This is the recommendation for private shelter; public buildings should have wider ramps (>150 cm) to allow two wheelchairs to pass each other.

International Federation of Red Cross and Red Crescent Societies Section B: Technical guidance for shelter and settlements

B2

- Barrier-free entrance** ^{B2.2.5}
Make openings at least 90 cm wide with no thresholds or barriers on the ground.
- Wheelchairs come in different shapes and sizes.** Carry out a test with local models and identify the maximum size a threshold can be before a ramp or bevelled edge is required (normally 2-3 cm).
- Accessible handles** ^{B2.2.7}
Provide doors and windows that are light and easy to open and close with accessible handles. Adapt to different types of disability as needed.
- Lighting** ^{B2.2.8}
Provide lighting inside and outside shelters and latrines with accessible light switches.
- Colour contrast** ^{B2.2.6}
Use non-reflective materials and a contrasting colour at the entrance of the shelter to make it easier for people with visual impairments to identify (see →B2.1.4).
- Indoor mobility** ^{B2.2.9}
Make sure there is space for a wheelchair to turn inside the shelter. Handrails along the inside perimeter can be of support for persons with visual or mobility impairment.



International Federation of Red Cross and Red Crescent Societies Disability-inclusive shelter and settlements in emergencies

Checklist A1. Preparedness

- Disability is included as a consideration from the beginning of preparedness or disaster risk reduction activities.
- An inventory has been prepared of existing organisational capacity and experience of disability issues, including accessible shelter.
- Disabled people's organisations (DPOs) are represented alongside National Societies, authorities and other stakeholders in preparedness activities.
- Local DPOs have been invited to take part in a review of existing shelter and settlement preparedness plans from a disability perspective.
- Persons with disabilities are informed of planning activities and invited to participate (with information in multiple formats and accessible meetings).
- Preparedness planning for shelter and settlements is accompanied by public awareness campaigns on disability concerns.
- If national laws and guidelines on accessibility exist, these are used as a starting point for preparedness measures.
- Assessment tools and forms are updated and include a disability component.
- Local DPOs help identify and mobilise persons with disabilities in the community and support the data collection process.

International Federation of Red Cross and Red Crescent Societies Section A: Inclusion in phases of emergency management

- Disability issues are visible in VCA presented in multiple accessible formats.
- Responsibilities and methods for assisting persons with disabilities have been identified.
- A chain of communication has been established with all members of the community and evacuations.
- Emergency evacuation shelters and settlements have been mapped and categorised according to accessibility.
- Measures have been carried out to improve temporary or permanent accessible facilities for persons with disabilities.
- Persons with disabilities are familiar with the layout of evacuation shelters and evacuation exercises.

All Under One Roof
Disability-inclusive shelter and settlements in emergencies

■ We need your feedback!

<https://www.surveymonkey.com/r/AUOR>

Disability Inclusion WG

- Please contact disability.inclusion@sheltercluster.org or follow the GSC page <https://www.sheltercluster.org/working-group/inclusion-persons-disabilities-shelter-programming>



All Under One Roof

Disability-inclusive shelter and settlements in emergencies

Self-Recovery (Promoting Safer Building) WG

The overall Promoting Safer Building proposal addresses the needs of those who self-build, specifically three important gaps:

1. **Understanding the recovery process:** how to understand and support both the needs and choices of disaster affected people, support them to overcome obstacles to recovery and allow them to take control of their own recovery. *Where do we, as external actors, support and intervene?*
2. **Technical best practices:** what are the key construction best practice messages that will make a substantial improvement to the safety and robustness of houses, in different contexts (hazards; building typology; social, cultural and economic contexts)? *How do we assess local contexts and decide what technical messages should be prioritized?*
3. **Changing construction practices both before and after disasters:** Learning from and improving on current technology transfer and public education approaches, what communication, teaching and promotion methods really work? *How do we make promotion of safer building effective and central to shelter programming?*

[Promoting Safer Building Working Group](#)

Self-Recovery (Promoting Safer Building) WG

This last year, the working group benefits from a GCRF grant to work together. This grant helps to support the development of different activities.

[Self-recovery from humanitarian crisis | Build back safer & better](#)

Activities included : Testing the Self-Recovery Protocol in Malawi

A Protocol for Developing & Disseminating Shelter and Settlement related Information, Education, Communication (IEC) Resources

Step 0: **Forming the Working Group**

Step 1: **Understanding the Context**

Step 2: Define IEC **Preliminary Objectives**

Step 3: Identifying **Stakeholders & Audiences**

Step 4: **Engagement pathways analysis** (communication media analysis)

Step 5: **Develop Detailed Messaging** for Audience/ Stakeholders and Engagement Pathways

Step 6: Define **Roll-Out Strategy** and **confirm IEC objectives**

Step 7: Define **Monitoring, Revision and Evaluation Framework**

[Protocol - Informing Choice For Better Shelter](#)

Self-Recovery (Promoting Safer Building) WG

Step 1: **Understanding the Context**

Shelter Response Profiles

We develop a new Shelter Response Profile for Malawi.

Today, the collection includes 8 documents. [Shelter Response Profiles](#)

In 2020 an impact study has been carried out

Thanks to 2020-2022 Global Shelter Cluster BHA Grant:

Two more SRP will be elaborated in 2021-2022.

Interested open shelter cluster group will be invited to apply for this support.



Self-Recovery (Promoting Safer Building) WG

Step 1: **Understanding the Context**

Contextualized assessment of local building sector

Methods and tools evolve

and

KAP analysis is about to be finalized.

Thanks to 2020-2022 Global Shelter Cluster BHA Grant:

In partnership with Caritas Bangladesh and CRS, an online tutorial will be develop and shared with the sector by end 2022



[Practical guide for the analysis of local construction](#)

Self-Recovery (Promoting Safer Building) WG

- To support step 2 to 7 different tools are under development.

Thanks to 2020-2022 Global Shelter Cluster BHA Grant, the WG (CARE International and CRAterre) with the support of Care Malawi and with the involvement of partners as peer reviewer, will develop some tools and methods for supporting decision making based on the results of contextual analysis.

- **The Shelter Compendium**

Lead by IOM and thanks to BHA support

Database of over 700 IEC materials

Overview Publication with case studies, analysis and technical reviews

The Shelter Compendium

INFORMATION, EDUCATION AND COMMUNICATION MATERIALS
FOR SHELTER AND SETTLEMENTS PROGRAMMING



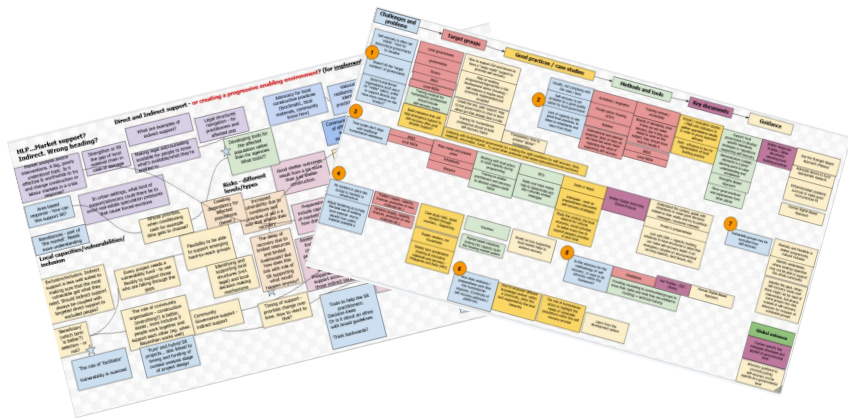
iec.sheltercluster.org

Open space: Thursday, June 17 - 13:00 to 13:45 (CEST)

Self-Recovery (Promoting Safer Building) WG

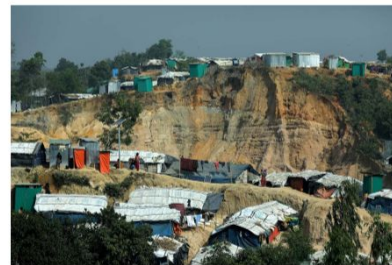
Shelter Self-Recovery Guidance Workshops

1. Context Analysis workshop (April 2020)
2. Implementation workshop (September 2020)
3. MEAL workshop (January 2021)



Exploring linkages between geoscience and humanitarian shelter: workshop report

Global Programme
Open Report OR/20/45



Shelter and Geoscience workshop
(July 2020)

Self-Recovery (Promoting Safer Building) WG

CHAPTER 8

Adopting an Environmental Health Lens in Practice

Towards Healthier Homes in Humanitarian Settings

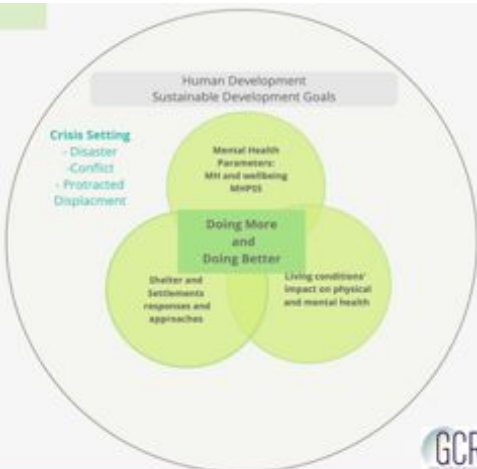
Proceedings of the Multi-sectoral Shelter & Health Learning Day 14th May 2020

Compiled by: Sue Webb, Emma Weinstein Sheffield and Bill Flinn



CENDEP
Centre for Development and Emergency Practice

OXFORD
BROOKES
UNIVERSITY



Shelter and Mental Health: doing more and doing better

Thursday 20th May

Friday 28th May



OXFORD
BROOKES
UNIVERSITY

cen
dep



Shelter and Health

Global Shelter Cluster annual meeting

Wednesday 9th June, 1100-1230 BST



OXFORD
BROOKES
UNIVERSITY

cen
dep



Self-Recovery (Promoting Safer Building) WG

Research activities:

Chapters in Roadmap for Research:

- Chapter 5: Reconsidering Protection and Self-recovery
- Chapter 8: Adopting an Environmental Health Lens in Practice (with Sue Webb, Emma Weinstein Sheffield and other co-authors)
- Chapter 10: Supporting the Recovery of Home-based Enterprises
- Chapter 12: Defining a good home.
- Chapter 14: Exploring the Role of Shelter and Settlements in Conflict and Peacebuilding
- Chapter 15: Incorporating Local Building Practices in Response

Opinion piece articles in upcoming Shelter Projects

- 'A healthier home is a better home'
- 'All the ways home; A proposition for the Shelter & Settlements sector to embrace Homes & Communities' (with NRC and CRS)

Forced Migration Review article (with Niall Roche)

- 'Recognising Shelter, WaSH and Environmental Health as Pillars of Public Health' (not yet published)

Under study

- Working paper on self-recovery (WG + GCRF partners)
- Working study on Local Building Culture and self recovery (CRAterre, AE&CC)

Soon to appear:

- Rethinking Urban Risk and Resettlement in the Global South, UCL Press - Chapter: Stay or leave? The dilemma of typhoon survivors in urban Tacloban, Philippines
- Humanitarian Civil Engineering - ICE Publishing Chapter: Is safe the enemy of safer? Housing after disasters and the role of built environment engineers.

Self-Recovery (Promoting Safer Building) WG

THANK

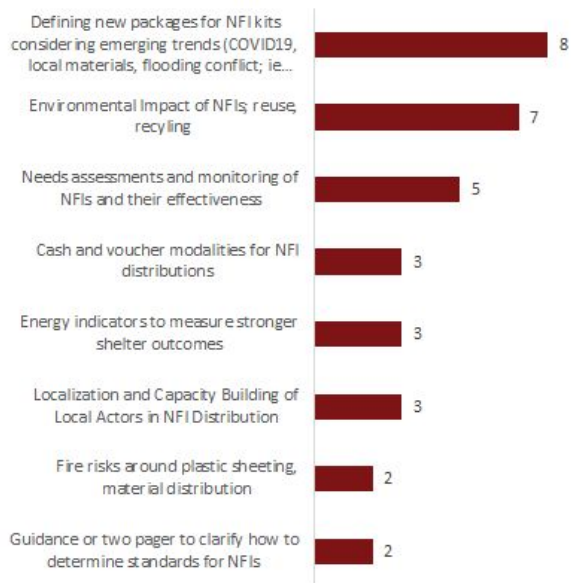
YOU

QUESTIONS?



NFI CoP

Topics for the NFI WG to Include in 2021 Work Plan



Recent Meetings and Topics

- **Fuel for Cooking and Winterization**
- **Markets, Modalities, and Approaches**
- **Energy**
- **Environmental Sustainability**
- **Classifying NFIs**
- **Greening the Response**

NFI WG

Hit subscribe to receive updates and join the discussion:

<https://www.sheltercluster.org/working-group/nfi-practices>

Diaspora Engagement WG

Origin: GSC retreat, on September 2019 - spearheaded by 2 years of work on engaging diaspora for promoting safer shelters for DRR

Membership: IOM; Haiti Renewal Alliance (HRA), University of the Philippines Alumni Association of San Francisco and PSRC (UPAASF), Habitat for Humanity, USAID/BHA, IFRC, UNHCR, Interaction, Filipino Americans in Science and Engineering, Haiti Shelter Sector, Philippines Shelter Cluster.

Key expected outcomes:

- **SOPs and related workflows** to promote an **increased coordination between shelter actors and Diaspora actors** for more effective responses, which account for the meaningful contribution of diasporas, as "non-institutional" but valuable actors.
- **SOPs to be relevant at the global level and also be piloted** in Philippines context and other countries that might be interested

Next meeting: Tentative date **24th June**

Diaspora Engagement WG

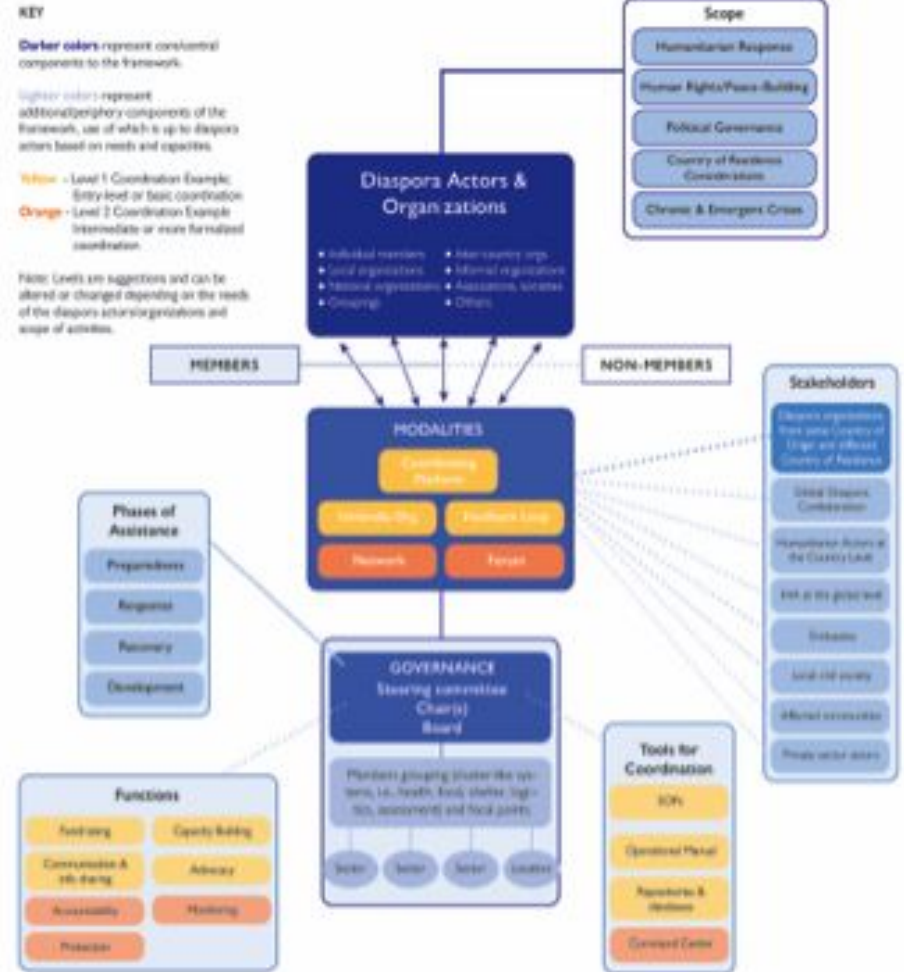
Current connected initiative

Objective: Developing and Piloting a *Framework for Diaspora's Engagement in Humanitarian Assistance*.

A cycle of 6 meetings held in recent months.

A model for diaspora's internal coordination drafted

A framework for external coordination under draft
The drafted GSC Diaspora Engagement WG SOPs are currently revisited to reflect on, and align with, this process.



Diaspora Engagement WG

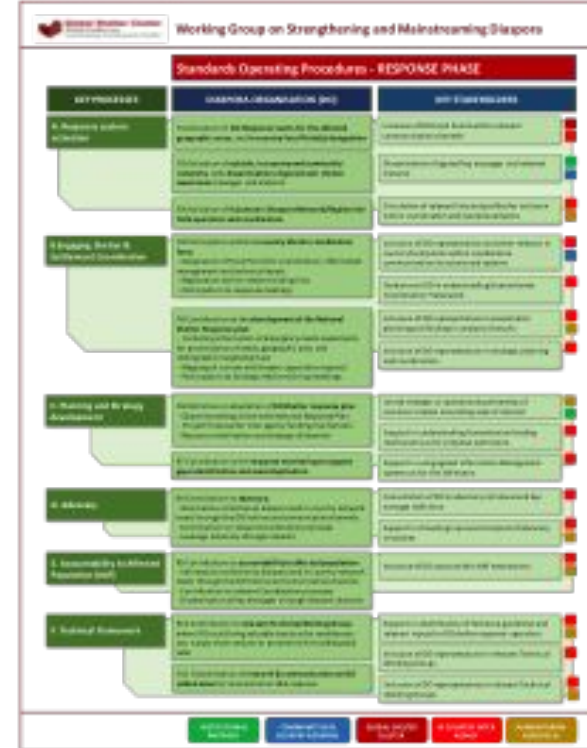
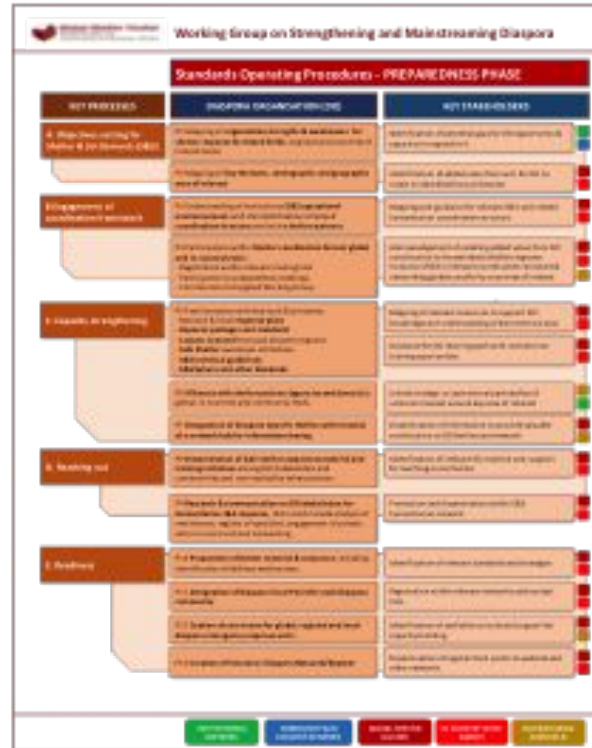
SOPs workflows

To be part of the revised SOPs & work as stand alone document.

Preparedness & Response phases

Roadmap for coordination, with Key Processes & Activities

For Diaspora organisations & stakeholders



Standards Operating Procedures - PREPAREDNESS PHASE

KEY PROCESSES	DIASPORA ORGANISATION (DO)	KEY STAKEHOLDERS
A. Objectives setting for Shelter & Settlements (S&S)	P1 Mapping of organisation strengths & weaknesses for shelter response & related fields , at global and countries of interest levels	Identification of potential gaps for DO opportunity & capacity to respond to it
	P2 Mapping of key thematic, demographic and geographic area of interest	Identification of added value from and for DO to invest in identified focus of interest
B. Engagement of coordination framework	P3 Understanding of institutional S&S operational environnement with the identification of related coordination structure and active shelter partners .	Mapping and guidance for relevant S&S and related humanitarian coordination structure
	P4 Participation within Shelter coordination foras at global and in country levels : <ul style="list-style-type: none"> - Registration within relevant mailing lists - Participation to preparedness meetings - Contribution to targeted Working Group 	Acknowledgement of enabling added value from DO contribution to humanitarian shelter response. Inclusion of DO in relevant coordination structure & networking globally and/or by countries of interest
C. Capacity strengthening	P5 Familiarisation with key tools & processes: <ul style="list-style-type: none"> - National & local response plans - Reponse packages and standards - Lessons Learned from past disaster response - Safe Shelter awareness initiatives - S&S technical guidelines - S&S Sphere and other Standards 	Mapping of relevant resources to support DO knowledge and understanding of key technical area
		Guidance for DO learning path with invitation to training oportunities

Diaspora Engagement WG

If you want to be involved in this process:

Please join the next meeting on 24th June:

- ✓ Presentation of the Framework for Diaspora's Engagement in Humanitarian Assistance
- ✓ Presentation of the 2 workflows
- ✓ Group discussion on prioritisation and way forward for the SOPs and piloting steps.

Please send an email to:

Roberta Romano rromano@iom.int & Xavier Génot xavier.genot.fr@gmail.com

Environment CoP

<https://www.sheltercluster.org/community-of-practice/environment>

Information Management CoP

Where to find us

<https://www.sheltercluster.org/community-of-practice/information-management>

HOME | GLOBAL | OPERATIONS | RESOURCES | ABOUT US | SEARCH

Information Management Community of Practice

OVERVIEW

Subscribe to **notifications** about this group by creating an account or logging in (recommended).

[Sign up or log in](#)

Or enter your email address to subscribe without a user account.

Email address

I'm not a robot

reCAPTCHA
[Privacy](#) - [Terms](#)

[Subscribe without an account](#)

Dashboard

Documents (0)

News (1)

The Information Management Community of Practice is a venue to share and exchange information related to information management practices used within the Shelter Cluster at global and field levels. It is provisionally open to all individuals interested in the topic regardless of agency affiliation but will necessarily require some moderation to ensure information is appropriate and on-topic. To receive notifications from this CoP and become part of it, simply use the "[Follow this Group](#)" link to the left. Users are encouraged to create an account with the platform.

For more information, this Community is moderated by [Neil Bauman](#) (IFRC/Canadian Red Cross) and [Renee Wynveen](#) (UNHCR).

Themes of conversation include, but are not limited to:

- Good and bad practices used during responses
- Sharing of developed products and other resources of learning interest to the community
- Updates from the Global-level on coordination practices that any impact IM support
- Learning resources
- Updates to the ShelterCluster.org web platform or mobile application

****Note: the previous Communities of Practice, originally hosted using Google Groups will be decommissioned and hosted natively on the ShelterCluster.org website going forward.**

Some important resources:

- The [Global Shelter Cluster Information Management and Assessment Toolkit](#)
- The Shelter Cluster Mobile App - Available for [iOS](#) and [Android](#) platforms

Typical Themes for support

- Website development and administration
- Data Collection
- 5W
- Assessments
- Mobile tools
- Employment Opportunities

Website

Improved Features

- Communication
 - Subscriptions/following
 - News
 - Notifications
- Data collection tools
- Backend improvements
- Search

Website – Upcoming Improvements

Current migration effort

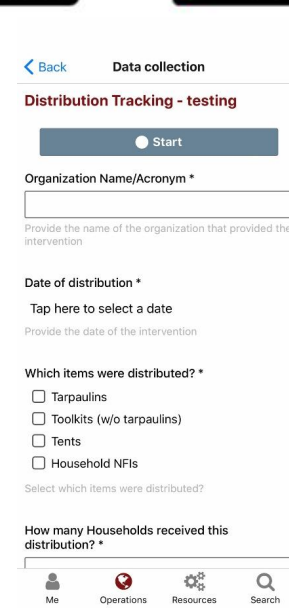
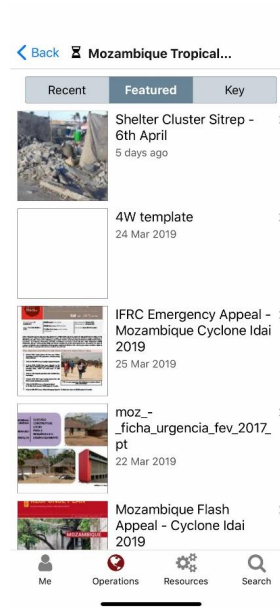
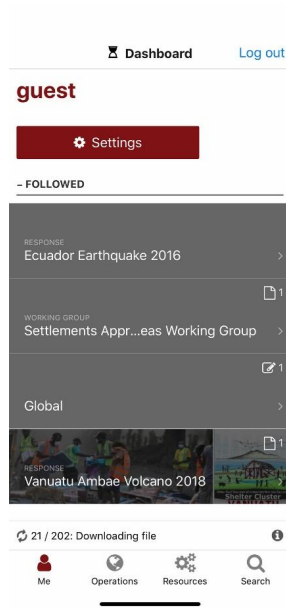
- Updated Content Management System and hosting
- Simultaneous work with the mobile app

In development

- IEC Compendium
- Learning Center
- Events, Calendars

Mobile Application

DOWNLOAD THE SHELTER CLUSTER MOBILE APP



Ties to Related Working Groups

- Vulnerability Classification
- NFI
- Promoting Safer Building - IEC
Compendium
- Shelter and Cash